

The following supplement accompanies the article

## Patterns in sexual reproduction of the dominant scleractinian corals at Rapa Nui (Easter Island): *Pocillopora verrucosa* and *Porites lobata*

Hagen Buck-Wiese\*, Itziar Burgués, Alba Medrano, Teresa Navarrete-Fernandez, Michel Garcia, Evie A. Wieters

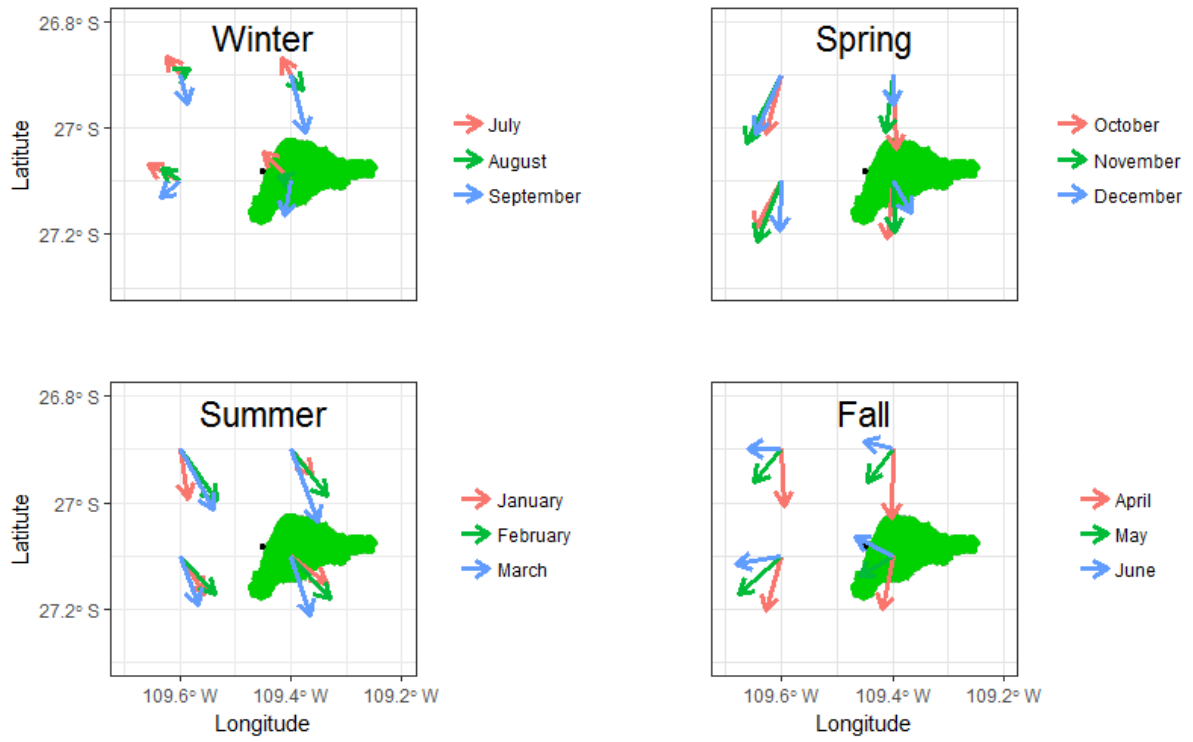
\*Corresponding author: h.buckwiese@gmail.com

*Aquatic Biology* 27: 1–11 (2018)

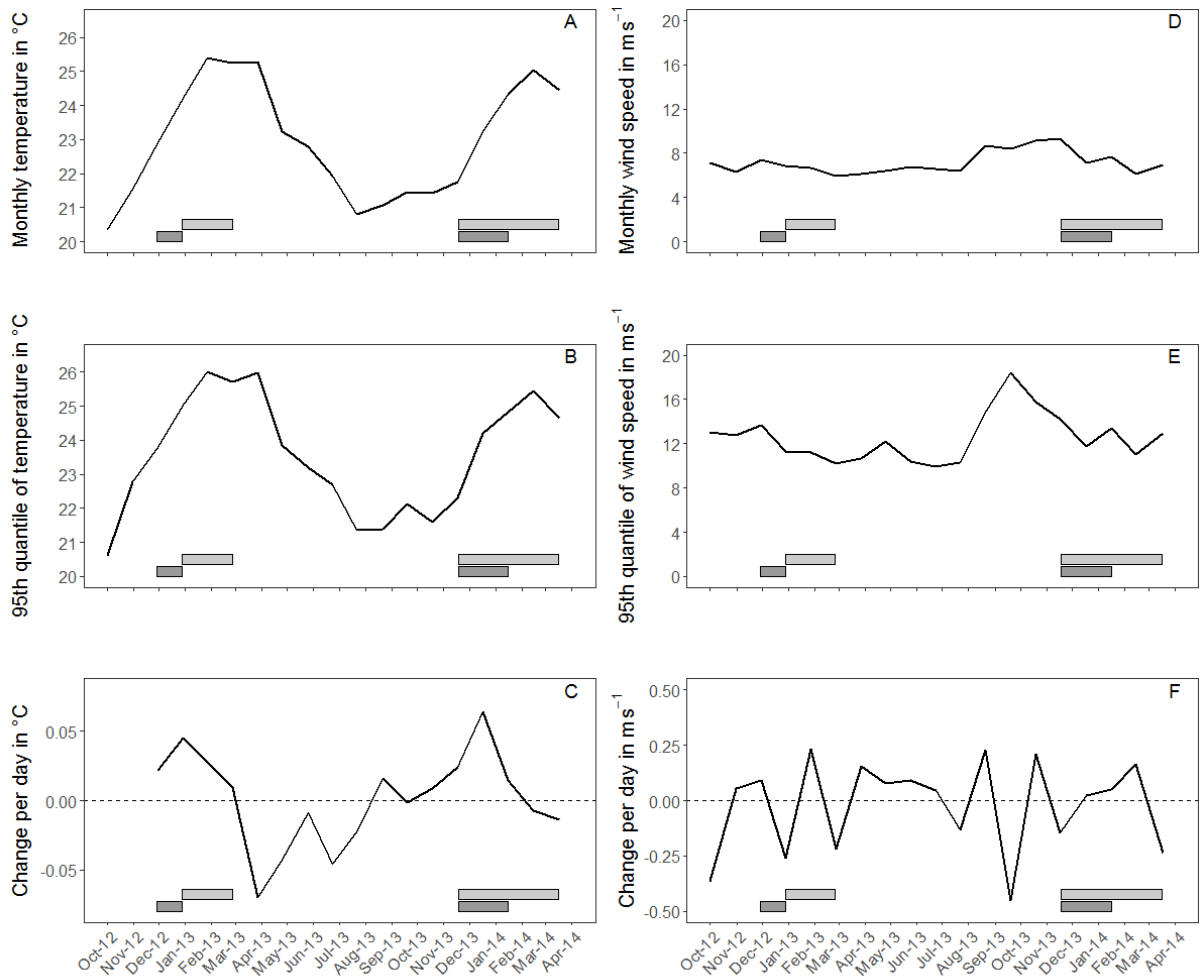
**Table S1: Overview of histological samples** including proportions of reproductive activity and sexes

Species	Year	Month	Number of samples	Reproductive activity	Oocyte presence	Spermary presence	Sex ratio
<i>Porites lobata</i>	2012	12	1	0/1	0	0	
<i>Porites lobata</i>	2013	1	2	2/2	2	0	2:0
<i>Porites lobata</i>	2013	2	6	5/6	4	1	4:1
<i>Porites lobata</i>	2013	3	6	1/6	1	0	1:0
<i>Porites lobata</i>	2013	4	6	0/6	0	0	
<i>Porites lobata</i>	2013	5	3	0/3	0	0	
<i>Porites lobata</i>	2013	6	3	0/3	0	0	
<i>Porites lobata</i>	2013	7	3	0/3	0	0	
<i>Porites lobata</i>	2013	8	3	0/3	0	0	
<i>Porites lobata</i>	2013	9	3	0/3	0	0	
<i>Porites lobata</i>	2013	10	3	0/3	0	0	
<i>Porites lobata</i>	2013	11	3	0/3	0	0	
<i>Porites lobata</i>	2013	12	6	1/6	1	0	1:0
<i>Porites lobata</i>	2014	1	6	3/6	2	1	2:1
<i>Porites lobata</i>	2014	2	6	6/6	3	3	3:3
<i>Porites lobata</i>	2014	3	5	5/5	4	1	4:1
<i>Porites lobata</i>	2014	4	5	1/5	0	1	0:1
<i>Pocillopora verrucosa</i>	2012	12	1	1/1	1	1	Herma- phrodites

Species	Year	Month	Number of samples	Reproductive activity	Oocyte presence	Spermary presence	Sex ratio
<i>Pocillopora verrucosa</i>	2013	1	10	0/10	0	0	
<i>Pocillopora verrucosa</i>	2013	2	6	0/6	0	0	
<i>Pocillopora verrucosa</i>	2013	3	3	0/3	0	0	
<i>Pocillopora verrucosa</i>	2013	4	3	0/3	0	0	
<i>Pocillopora verrucosa</i>	2013	5	3	0/3	0	0	
<i>Pocillopora verrucosa</i>	2013	6	2	0/2	0	0	
<i>Pocillopora verrucosa</i>	2013	7	3	0/3	0	0	
<i>Pocillopora verrucosa</i>	2013	8	3	0/3	0	0	
<i>Pocillopora verrucosa</i>	2013	9	3	0/3	0	0	
<i>Pocillopora verrucosa</i>	2013	10	3	0/3	0	0	
<i>Pocillopora verrucosa</i>	2013	11	3	0/3	0	0	
<i>Pocillopora verrucosa</i>	2013	12	6	5/6	5	5	Herma- phrodites
<i>Pocillopora verrucosa</i>	2014	1	6	5/6	5	5	Herma- phrodites
<i>Pocillopora verrucosa</i>	2014	2	6	0/6	0	0	
<i>Pocillopora verrucosa</i>	2014	3	5	0/5	0	0	
<i>Pocillopora verrucosa</i>	2014	4	5	0/5	0	0	



**Figure S1: Surface currents around Rapa Nui** determined from drifter data, showing near-surface currents for each month grouped by seasons.



**Figure S2: Temperature and wind during the sampling period** with reproductive periods of *P. verrucosa* (dark bars) and *P. lobata* (bright bars). A-C) Temperature and D-F) wind speed means and 95<sup>th</sup> quantile per month, and rate of daily change.