

Influence of climate change on agricultural land-use potential: adapting and updating the land capability system for Scotland

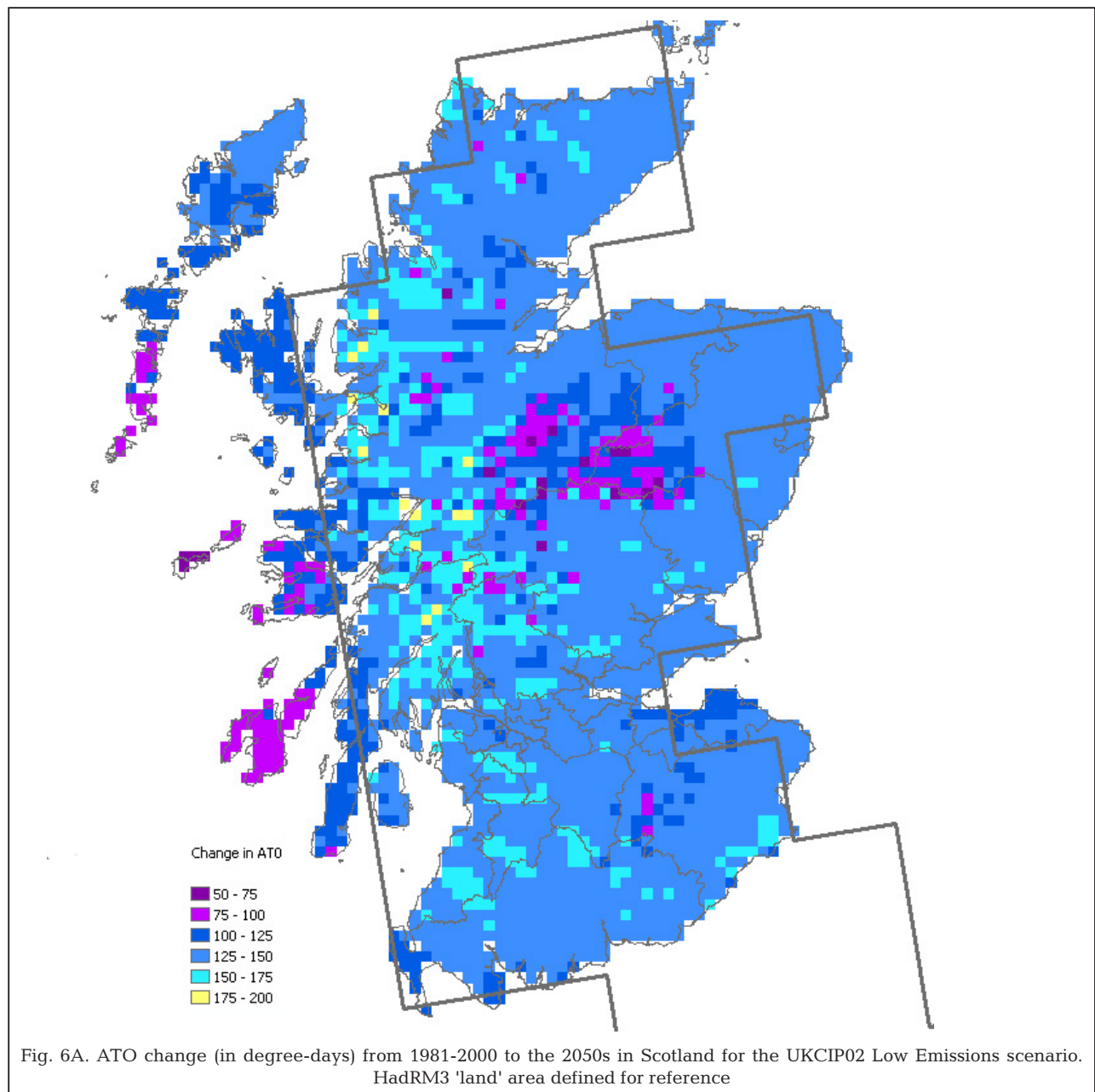
Iain Brown*, Willie Towers, Mike Rivington, Helaina I. J. Black

The Macaulay Institute, Craigiebuckler, Aberdeen AB15 8QH, UK

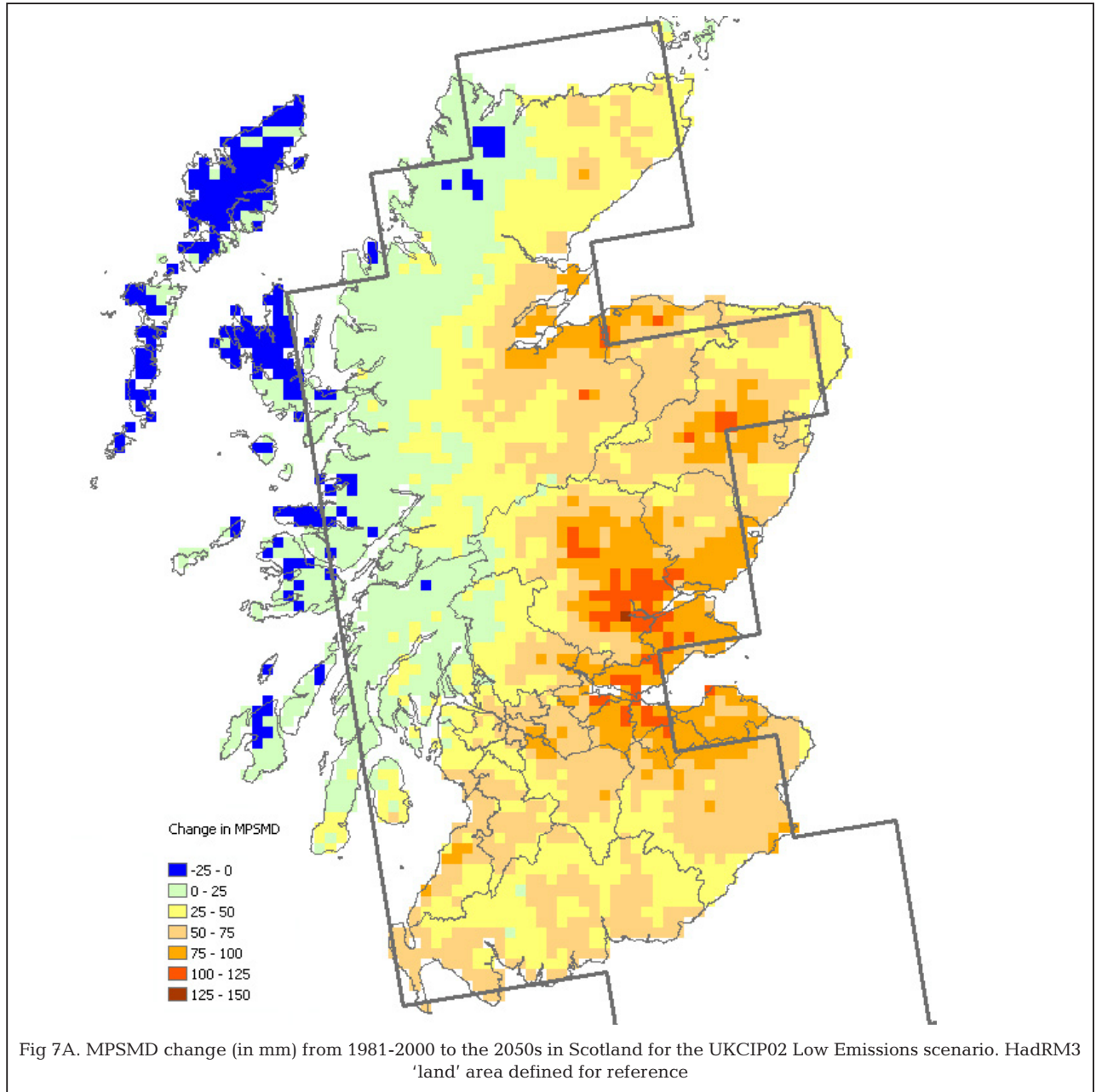
*Email: i.brown@macaulay.ac.uk

Climate Research 37:43–57 (2008)

Appendix 1. In the published paper we present results for the UKCIP02 Medium-High scenario. Here we provide additional figures showing results for the UKCIP02 Low scenario. Since both sets of results are for the 2050s period when the differences between emissions scenarios are just starting to diverge, then the scenario results are mostly quite similar



Appendix 1 (continued)



Appendix 1 (continued)





Fig 9A. 'Prime' land in Scotland for the 2050s, adding soil and topographic constraints. UKCIP02 Low Emissions scenario. HadRM3 'land' area defined for reference