

## Quantification of piscine reovirus (PRV) at different stages of Atlantic salmon *Salmo salar* production

Marie Løvoll, Marta Alarcón, Britt Bang Jensen, Torunn Taksdal, Anja B. Kristoffersen, Torstein Tengs\*

Norwegian Veterinary Institute, Ullevaalsveien 68, 0454 Oslo, Norway

\*Corresponding author. Email: torstein.tengs@vetinst.no

*Diseases of Aquatic Organisms* 99: 7–12 (2012)

### Supplement. Summary of results from PRV RT-qPCR and sequencing analyses

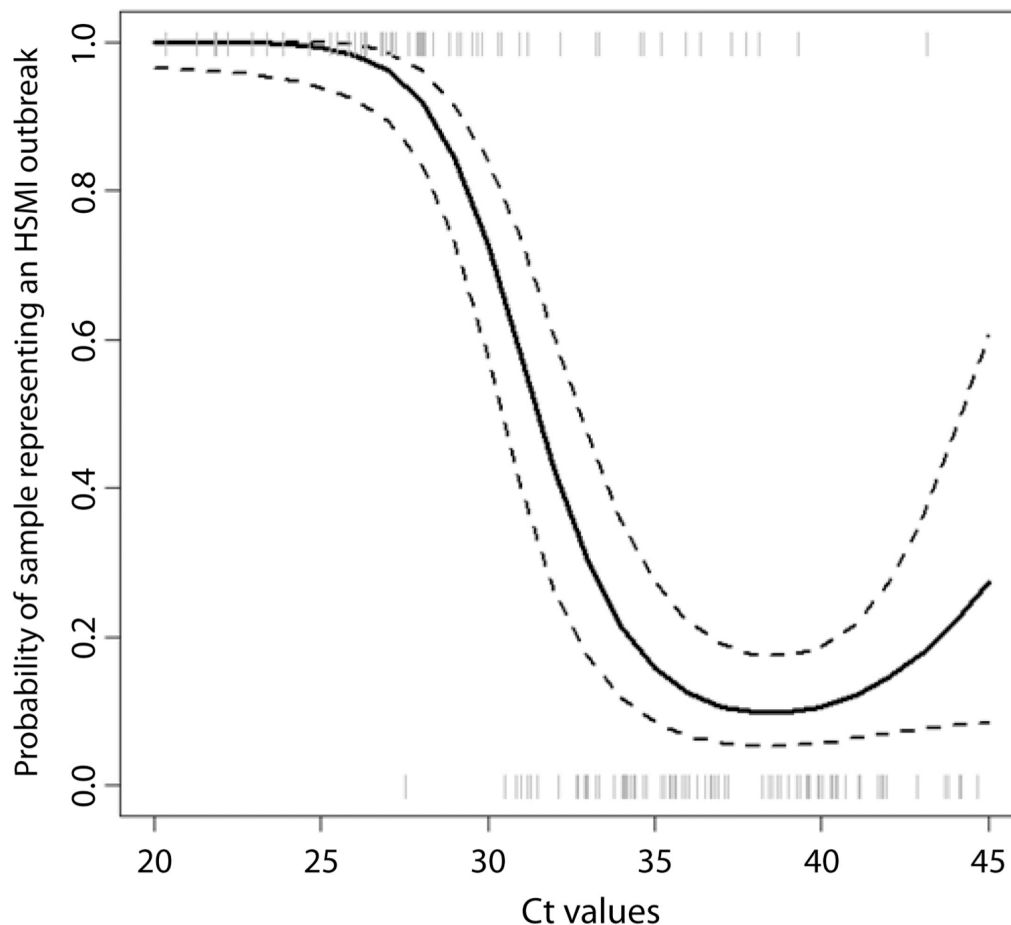


Fig. S1. Generalized additive logistic regression plot showing the relationship between the probability of samples originating from an HSMI outbreak and PRV RT-qPCR Ct values. Negative RT-qPCRs were excluded; otherwise the same data as for Fig. 1 were used. Grey hatch marks correspond to Ct values from Atlantic salmon sampled during HSMI outbreaks (probability of occurrence = 1) and fish with no heart lesions (probability of occurrence = 0). Dashed lines correspond to 95% CI

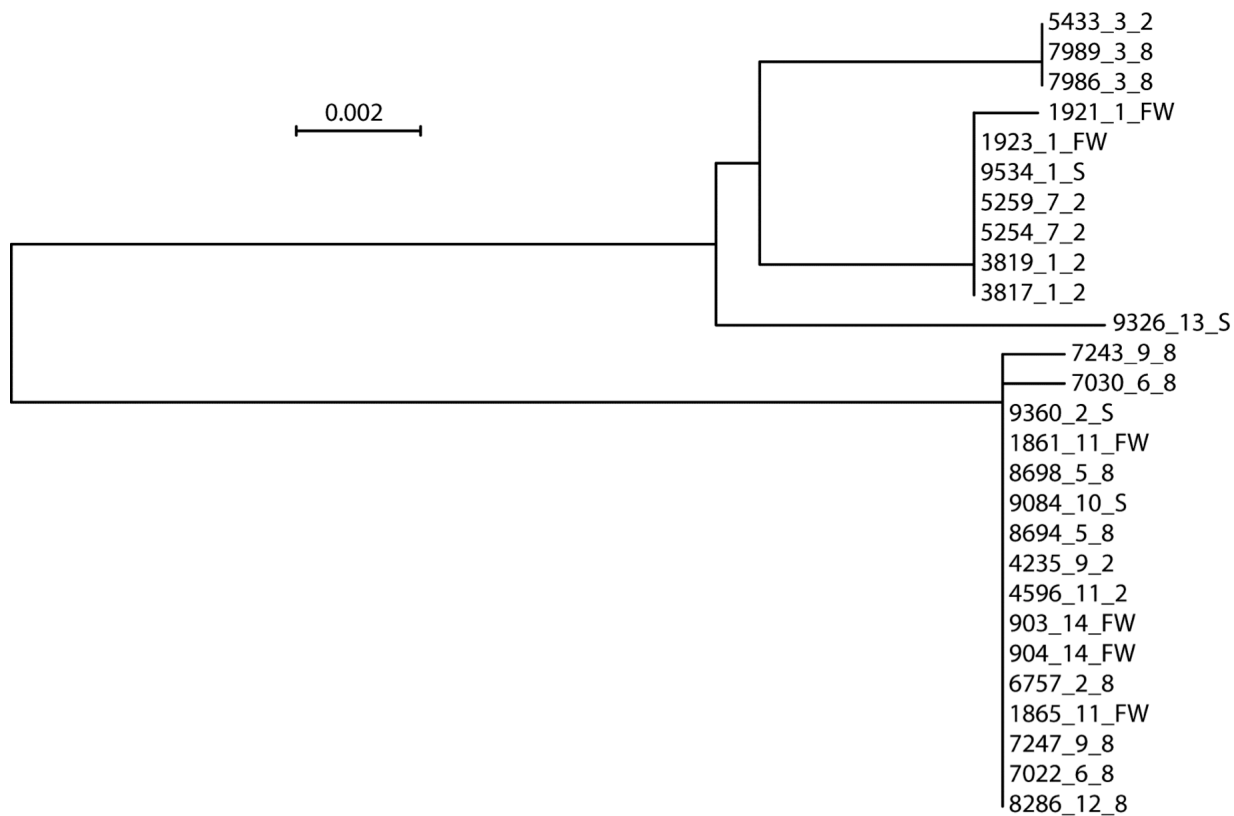


Fig. S2. Neighbour-joining tree (Jukes and Cantor distances) of S4 sequences from various cohorts and time points (samplenumber\_cohort\_timepoint; see Table S1 for sample details)

Table S1. RT-qPCR results for PRV quantification in different cohorts of Atlantic salmon from the longitudinal sample set (freshwater pre-smolts to fish ready for slaughter). Ct values above 40 were defined as negative

Cohort	Farm	Sampling (yyyymm)	Time	Diagnosis (yyyymm)	Sample #1	Sample #2	Sample #3	Sample #4	Sample #5	Sample #6	Sample #7	Sample #8	Sample #9	Sample #10	Sample	
1	264	FWsite1	FW	HSMI (200610 & 200701)	21.29	28.66	22.98	35.59	37.59	No Ct	37.34	37.40	No Ct	No Ct	1921 - 1930	
			2 mo		27.18	28.66	27.43	27.86	25.84	25.67	24.98	25.94	23.28	25.13	3811 - 3820	
			8 mo		32.37	31.12	31.43	30.11	32.90	33.31	33.44	30.58	30.22	31.47	6181 - 6190	
			Slaughter		No Ct	No Ct	No Ct	30.47	35.12	35.27	31.36	33.32	35.43	37.46	9531 - 9540	
2	2237	FWsite2	FW	HSMI (200703)	No Ct	No Ct	No Ct	No Ct	No Ct	No Ct	No Ct	No Ct	No Ct	No Ct	1801 - 1810	
			2 months		No Ct	No Ct	No Ct	No Ct	No Ct	No Ct	No Ct	No Ct	No Ct	No Ct	3001 - 3010	
			8 months		34.48	33.54	No Ct	28.71	36.82	31.08	30.34	33.09	No Ct	28.20	6751 - 6760	
			Slaughter		34.18	37.69	39.10	No Ct	34.98	No Ct	36.13	33.07	No Ct	32.71	9351 - 9360	
3	2036	FWsite3	FW	CMS (200709 & 200711) HSMI (200611)	No Ct	No Ct	No Ct	No Ct	No Ct	No Ct	No Ct	No Ct	No Ct	No Ct	1981 - 1990	
			2 mo		No Ct	29.52	20.19	29.83	29.99	31.83	33.71	35.23	33.87	34.2	5431 - 5440	
			8 mo		31.94	27.88	24.9	27.17	27.7	26.6	29.43	27.53	26.94	29.77	7981 - 7990	
			Slaughter		32.62	33.09	33.67	34.48	35.38	36.62	32.93	32.25	33.11	36.65	9651 - 9660	
4	3055	FWsite4	FW	HSMI (200707)	No Ct	No Ct	No Ct	No Ct	No Ct	No Ct	No Ct	No Ct	No Ct	37.61	No Ct	181 - 190
			2 mo		No Ct	32.31	No Ct	36.79	37.95	No Ct	37.73	No Ct	No Ct	38.05	4291 - 4300	
			8 mo		35.95	35.01	34.16	36.64	33.64	31.66	31.98	33.86	32.8	35.37	7921 - 7930	
			Slaughter		No Ct	No Ct	No Ct	No Ct	No Ct	36.57	36.17	No Ct	No Ct	37.45	9031 - 9040	
5	3572	FWsite5	FW	HSMI (200610)	No Ct	No Ct	No Ct	No Ct	No Ct	No Ct	No Ct	37.56	No Ct	No Ct	2401 - 2410	
			2 mo		No Ct	No Ct	No Ct	No Ct	No Ct	No Ct	No Ct	No Ct	No Ct	No Ct	5011 - 5020	
			8 mo		36.42	33.85	34.79	33.35	31.31	36.02	34.23	33.82	32.92	34.85	8691 - 8700	
6	229	FWsite6	FW	HSMI (200609)	No Ct	No Ct	No Ct	No Ct	No Ct	No Ct	No Ct	No Ct	No Ct	No Ct	1741 - 1800	
			2 mo		No Ct	No Ct	No Ct	32.53	No Ct	No Ct	No Ct	37.42	No Ct	No Ct	3241 - 3300	
			8 mo		32.13	31.3	32.28	29.76	33.54	32.63	34.09	34.38	29.47	31.28	7021 - 7030	
7	24	FWsite7	FW	NL	No Ct	No Ct	No Ct	No Ct	No Ct	No Ct	No Ct	No Ct	No Ct	No Ct	2641 - 2650	
			2 mo		31.59	35.82	28.27	28.12	27.6	30.74	26.8	No Ct	28.18	32.59	5251 - 5260	
			8 mo		38.92	No Ct	No Ct	37.95	31.79	31.87	33.57	37.05	36.94	37.18	7451 - 7460	

8	44	FWsite8	FW	NL	No Ct	No Ct	No Ct	No Ct	No Ct	No Ct	No Ct	No Ct	No Ct	No Ct	2041 - 2050	
		200607	2 mo		No Ct	No Ct	No Ct	No Ct	No Ct	No Ct	No Ct	No Ct	No Ct	No Ct	No Ct	3751 - 3760
		200707	8 mo		No Ct	No Ct	No Ct	32.53	No Ct	No Ct	No Ct	37.42	No Ct	No Ct	No Ct	8631 - 8640
		200710	Slaughter		No Ct	No Ct	No Ct	No Ct	No Ct	No Ct	No Ct	No Ct	No Ct	No Ct	No Ct	8921 - 8930
9	2370	FWsite9	FW	NL	No Ct	No Ct	No Ct	No Ct	No Ct	No Ct	No Ct	No Ct	No Ct	No Ct	1151 - 1160	
		200608	2 mo		No Ct	No Ct	No Ct	No Ct	23.86	No Ct	No Ct	No Ct	36.36	35.82	4231 - 4240	
		200702	8 mo		31.29	32.57	30.65	31.06	32.18	30.46	30.79	30.47	32.74	31.23	7241 - 7250	
		200711	Slaughter		35.75	33.23	34.85	33.14	37.44	36.44	36.68	35.62	32.92	36.83	9201 - 9210	
10	3246	FWsite10	FW	NL	No Ct	No Ct	No Ct	No Ct	No Ct	No Ct	No Ct	No Ct	No Ct	No Ct	1571 - 1580	
		200710	Slaughter		No Ct	38.89	35.84	36.02	No Ct	No Ct	35.45	36.8	No Ct	No Ct	9081 - 9090	
11	342	FWsite11	FW	NL	25.19	21.96	21.09	33.36	22.63	26.01	31.51	31.81	37.54	34.63	1861 - 1870	
		200608	2 mo		No Ct	34.78	33.26	No Ct	32.5	30.91	No Ct	33.98	34.86	31.81	4591 - 4600	
		200707	8 mo		No Ct	No Ct	No Ct	No Ct	No Ct	No Ct	36.52	No Ct	37.63	No Ct	8721 - 8730	
12	3522	FWsite12	FW	NL	37.89	No Ct	No Ct	No Ct	No Ct	No Ct	No Ct	No Ct	No Ct	No Ct	2221 - 2230	
		200608	2 mo		No Ct	No Ct	No Ct	No Ct	No Ct	37.47	No Ct	37.6	No Ct	No Ct	4771 - 4780	
		200703	8 mo		27.75	28.3	30.11	27.27	29.1	27.84	27.56	28.42	25.61	28.47	8281 - 8290	
		200710	Slaughter		35.93	33.51	35.01	32.38	32.15	32.44	32.35	35.9	33.87	34.92	9141 - 9150	
13	408	FWsite13	FW	NL	No Ct	No Ct	No Ct	No Ct	No Ct	No Ct	No Ct	No Ct	No Ct	No Ct	1381 - 1390	
		200711	Slaughter		31.26	30.62	30.64	43.84	No Ct	30.38	32.56	34.91	37.07	32.55	9321 - 9330	
14	4882	FWsite14	FW	NL	25.63	25.22	23.9	24.04	27.12	26.3	35.49	25.48	25.9	No Ct	901 - 910	
		200711	Slaughter		35.75	33.23	34.85	33.14	37.44	36.44	36.68	35.62	32.92	36.83	9291 - 9300	