

The following supplement accompanies the article

Pathogen surveillance in wild bottlenose dolphins
Tursiops truncatus

**Crystal Jaing*, James B. Thissen, Shea Gardner, Kevin McLoughlin, Tom Slezak,
Gregory D. Bossart, Patricia A. Fair**

*Corresponding author: jaing2@llnl.gov

Diseases of Aquatic Organisms 116:83–91 (2015)

Supplement. Microarray analyses of dolphin samples

Sample: Dolphin_862_Gastric Chip design: MDAv5_12x135K

Data file: 552701_2015-03-22_Dolph_Gast_862_532.pair

Target set: All Quantile threshold: 0.99

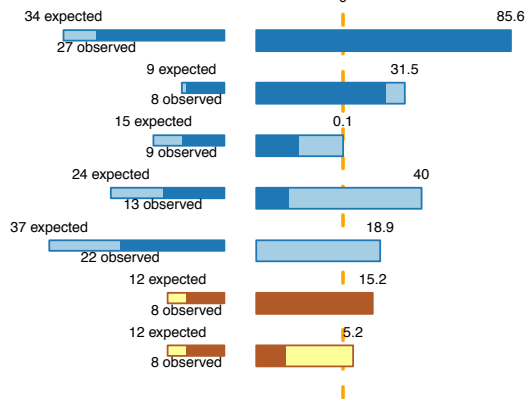
Min # det. probes: 8 Min frac. det. probes: 0.2 Excluded probe file: none

DNA quantity: 10ug PMT: 856% Hyb time: 65 hours

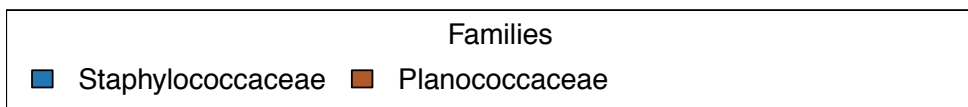
Comments: none

Probe Counts

Log CL Ratio



Staphylococcus epidermidis ATCC 12228 plasmidpSE-12228-06
Staphylococcus lugdunensis 995 plasmid pLUG10, complete sequence
 Staphylococcus chromogenes TS1 plasmid pLNU1, complete sequence
 Staphylococcus epidermidis ATCC 12228 plasmidpSE-12228-02
 Staphylococcus epidermidis SK398 plasmid pSK639, complete sequence
Glued fragments of sequence 746047 (Planococcus donghaensis MPA1U2)
 Solibacillus silvestris StLB046 DNA, complete genome



Request ID 205 Date: 2015-03-06 22:12:47

Page 1 / 1

Sample: Dolphin_862_Blowhole Chip design: MDAv5_12x135K

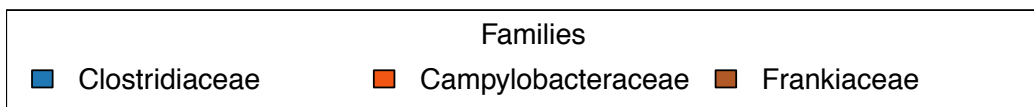
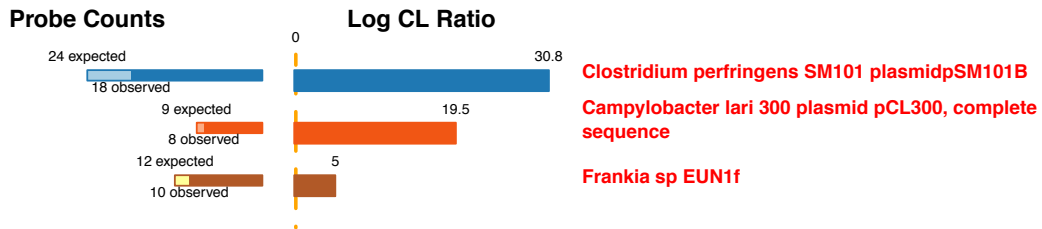
Data file: 552773_2014-06-16_Dol_BH_862_532.pair

Target set: All Quantile threshold: 0.99

Min # det. probes: 8 Min frac. det. probes: 0.2 Excluded probe file: none

DNA quantity: 0 PMT: 0 Hyb time: 0

Comments: none



Request ID 205 Date: 2015-03-06 21:51:59

Page 1 / 1

Sample: Dolphin_863_Blowhole Chip design: MDAv5_12x135K

Data file: 552975_2013-12-06_Dolphin_863_Blowhole_532.pair

Target set: All Quantile threshold: 0.99

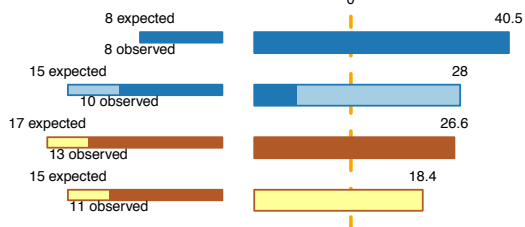
Min # det. probes: 8 Min frac. det. probes: 0.2 Excluded probe file: none

DNA quantity: 0 PMT: 0 Hyb time: 0

Comments: none

Probe Counts

Log CL Ratio



Exiguobacterium sp. AT1b chromosome, complete genome

Exiguobacterium sibiricum 255-15 chromosome, complete genome

Erwinia amylovora IL-5 plasmid pEA2.8, complete sequence

Escherichia coli plasmid pIGAL1, complete sequence

Families

■ Exiguobacterium ■ Enterobacteriaceae

Sample: Dolphin_863_Fecal Chip design: MDAv5_12x135K

Data file: 552773_2014-06-16_Dol_Fecal_863_532.pair

Target set: All Quantile threshold: 0.99

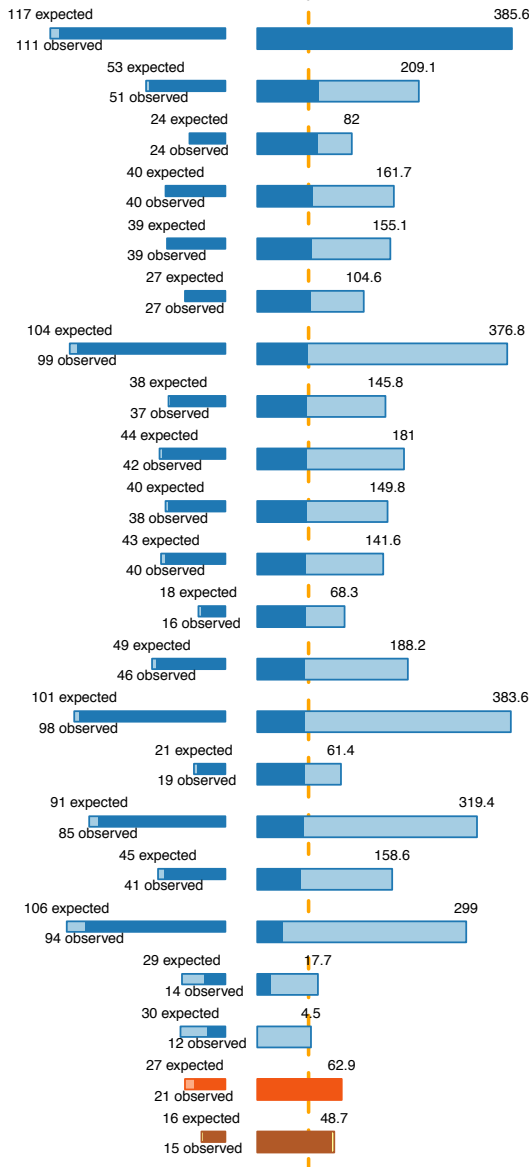
Min # det. probes: 8 Min frac. det. probes: 0.2 Excluded probe file: none

DNA quantity: 0 PMT: 0 Hyb time: 0

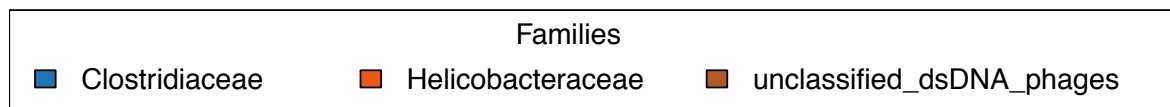
Comments: none

Probe Counts

Log CL Ratio



- Clostridium perfringens C str JGS1495
- Clostridium perfringens SM101 chromosome, complete genome
- Clostridium perfringens SM101 plasmidpSM101B
- Clostridium perfringens plasmid pCW3, complete sequence
- Clostridium perfringens plasmid pCPF5603, complete sequence
- Clostridium perfringens F5603 plasmid pBCNF5603, complete sequence
- Clostridium perfringens E str JGS1987
- Clostridium perfringens plasmid pCP8533etx, complete sequence
- Clostridium perfringens str. 13, complete genome
- Clostridium perfringens plasmid pCPPB-1, complete sequence
- Clostridium perfringens CPE str. F4969 plasmid pCPF4969, complete sequence
- Clostridium perfringens str. 13 plasmid pCP13, complete sequence
- Clostridium perfringens NCTC 8239
- Clostridium perfringens D str JGS1721
- Clostridium perfringens SM101 plasmidpSM101A
- Clostridium perfringens CPE str F4969
- Clostridium perfringens ATCC 13124 chromosome, complete genome
- Clostridium perfringens B str ATCC 3626
- Clostridium beijerinckii NCIMB 8052 chromosome, complete genome
- Glued fragments of sequence 733297 (Clostridium sp. 7 2 43FAA Clostridium sp. 7 2 43FAA, whole)
- Helicobacter pylori PeCan4 plasmidHPPC4
- Clostridium phage phiSM101 chromosome, complete genome



Sample: Dolphin_863_Gastric Chip design: MDAv5_12x135K

Data file: 552975_2013-12-06_Dolphin_863_Gastric_532.pair

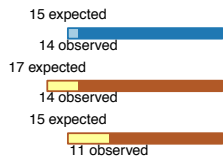
Target set: All Quantile threshold: 0.99

Min # det. probes: 8 Min frac. det. probes: 0.2 Excluded probe file: none

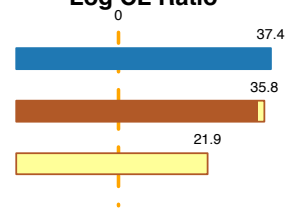
DNA quantity: 0 PMT: 0 Hyb time: 0

Comments: none

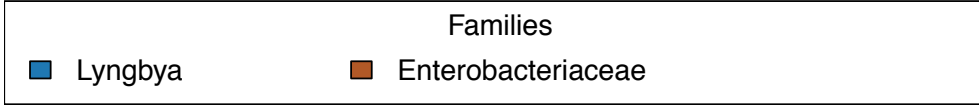
Probe Counts



Log CL Ratio



Glued fragments of sequence 750678 (*Lyngbya majuscula* 3L *Lyngbya majuscula* 3L, whole genome
Erwinia amylovora IL-5 plasmid pEA2.8, complete sequence
Escherichia coli plasmid pIGAL1, complete sequence



Request ID 212 Date: 2015-04-02 19:53:50

Page 1 / 1

Sample: Dolphin_866_Gastric Chip design: MDAv5_12x135K

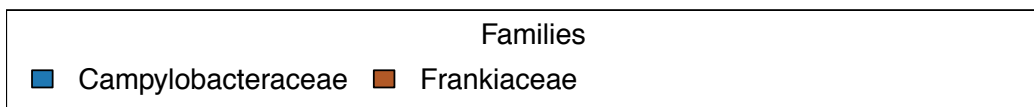
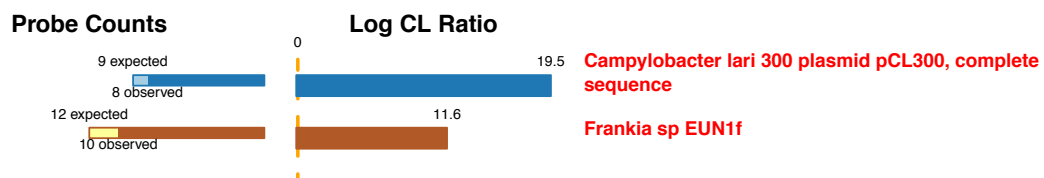
Data file: 552701_2015-03-22_Dolph_Gast_866_532.pair

Target set: All Quantile threshold: 0.99

Min # det. probes: 8 Min frac. det. probes: 0.2 Excluded probe file: none

DNA quantity: 10ug PMT: 847% Hyb time: 65 hours

Comments: none



Request ID 205 Date: 2015-03-06 19:37:14

Page 1 / 1

Sample: Dolphin_866_Fecal Chip design: MDAv5_12x135K

Data file: 552773_2014-06-16_DoI_Fecal_866_532.pair

Target set: All Quantile threshold: 0.99

Min # det. probes: 8 Min frac. det. probes: 0.2 Excluded probe file: none

DNA quantity: 0 PMT: 0 Hyb time: 0

Comments: none

Probe Counts



Log CL Ratio



Campylobacter lari 300 plasmid pCL300, complete sequence

Families	
■	Campylobacteraceae

Request ID 205 Date: 2015-03-06 19:06:02

Page 1 / 1

Sample: Dolphin_8F4_Fecal Chip design: MDAv5_12x135K

Data file: 552773_2014-06-16_DoI_Fecal_8F4_532.pair

Target set: All Quantile threshold: 0.99

Min # det. probes: 8 Min frac. det. probes: 0.2 Excluded probe file: none

DNA quantity: 0 PMT: 0 Hyb time: 0

Comments: none

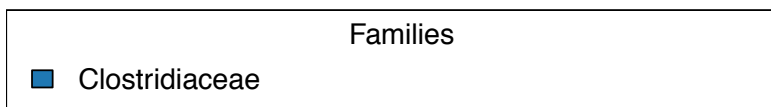
Probe Counts

21 expected
16 observed

Log CL Ratio



Clostridium perfringens SM101 plasmidpSM101A



Sample: Dolphin_8F8_Gastric Chip design: MDAv5_12x135K

Data file: 552762_2014-06-30_Dolphin_Gastric_8F8_532.pair

Target set: All Quantile threshold: 0.99

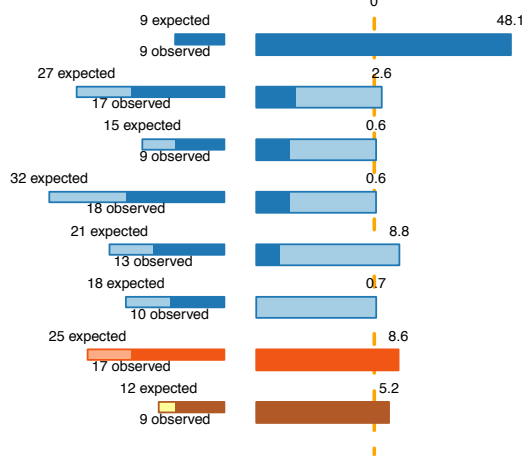
Min # det. probes: 8 Min frac. det. probes: 0.2 Excluded probe file: none

DNA quantity: 0 PMT: 0 Hyb time: 0

Comments: none

Probe Counts

Log CL Ratio



Staphylococcus lugdunensis 995 plasmid pLUG10, complete sequence

Staphylococcus chromogenes plasmid pLNU8 (naturally occurring), complete sequence

Staphylococcus chromogenes TS1 plasmid pLNU1, complete sequence

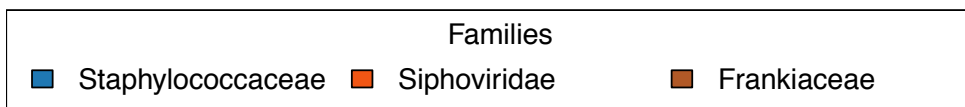
Staphylococcus haemolyticus JCSC1435 plasmid pSHaeA

Staphylococcus aureus plasmid pKH17, complete sequence

Macrocococcus caseolyticus JCSC5402 plasmid pMCCL5

Propionibacterium phage PA6

Frankia sp EUN1f



Request ID 205 Date: 2015-03-06 21:10:29

Page 1 / 1

Sample: Dolphin_8J2_Blowhole Chip design: MDAv5_12x135K

Data file: 552975_2013-12-06_Dolphin_8J2_Blowhole_532.pair

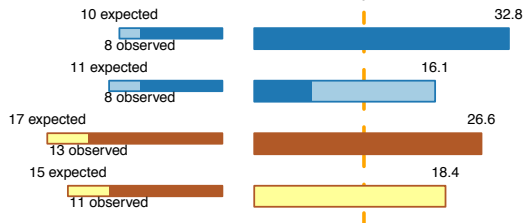
Target set: All Quantile threshold: 0.99

Min # det. probes: 8 Min frac. det. probes: 0.2 Excluded probe file: none

DNA quantity: 0 PMT: 0 Hyb time: 0

Comments: none

Probe Counts



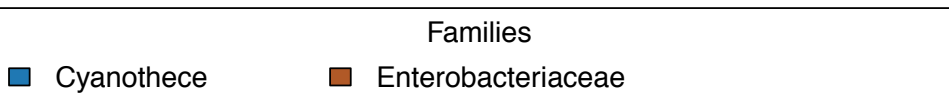
Cyanothece sp CCY0110

Cyanothece sp. PCC 7822 chromosome, complete genome

Erwinia amylovora IL-5 plasmid pEA2.8, complete sequence

Escherichia coli plasmid pIGAL1, complete sequence

Log CL Ratio



Request ID 205 Date: 2015-03-06 20:18:41

Page 1 / 1

Sample: Dolphin_8J2_Gastric Chip design: MDAv5_12x135K

Data file: 552975_2013-12-06_Dolphin_8J2_Gastric_532.pair

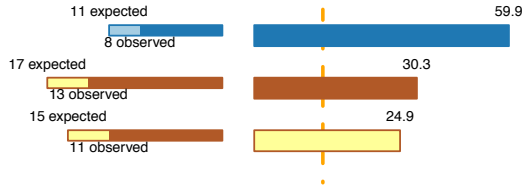
Target set: All Quantile threshold: 0.99

Min # det. probes: 8 Min frac. det. probes: 0.2 Excluded probe file: none

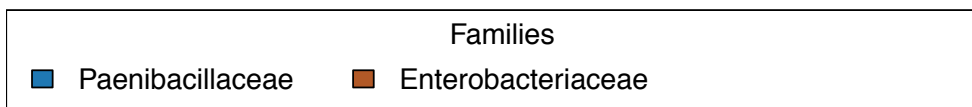
DNA quantity: 0 PMT: 0 Hyb time: 0

Comments: none

Probe Counts



Brevibacillus brevis NBRC 100599
Erwinia amylovora IL-5 plasmid pEA2.8, complete sequence
Escherichia coli plasmid pIGAL1, complete sequence



Sample: Dolphin_8F8_Fecal Chip design: MDAv5_12x135K

Page 1 / 1

Data file: 552773_2014-06-16_Dol_Fecal_8F8_532.pair

Likelihood model: factored Target set: all Quantile threshold: 0.99

Min # det. probes: 8 Min frac. det. probes: 0.2 Excluded probe file: none

DNA quantity: 10 ug PMT: 692% Hyb time: 70 hours

Comments: none

