

The following supplement accompanies the article

Molecular identification and microscopic characterization of poxvirus in a Guiana dolphin and a common bottlenose dolphin, Brazil

Carlos Sacristán*, Fernando Esperón, Juliana Marigo, Ana Carolina Ewbank, Rafael Ramos de Carvalho, Kátia Regina Groch, Pedro Volkmer de Castilho, Angélica María Sánchez-Sarmiento, Samira Costa-Silva, Eduardo Ferreira-Machado, Omar Antonio Gonzales-Viera, Fábio G. Daura-Jorge, Elitieri B. Santos-Neto, José Lailson-Brito, Alexandre de Freitas Azevedo, Paulo C. Simões-Lopes, Carlos G. Das Neves, José Luiz Catão-Dias

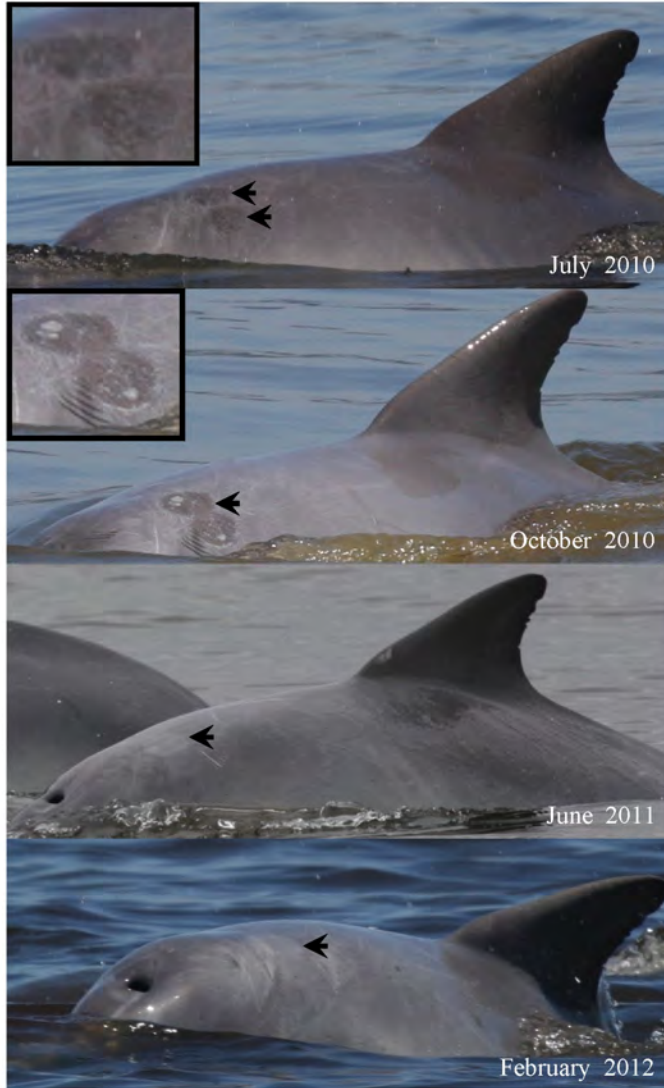
*Corresponding author: carlosvet.sac@gmail.com

Diseases of Aquatic Organisms 130: 177–185 (2018)

BG#34

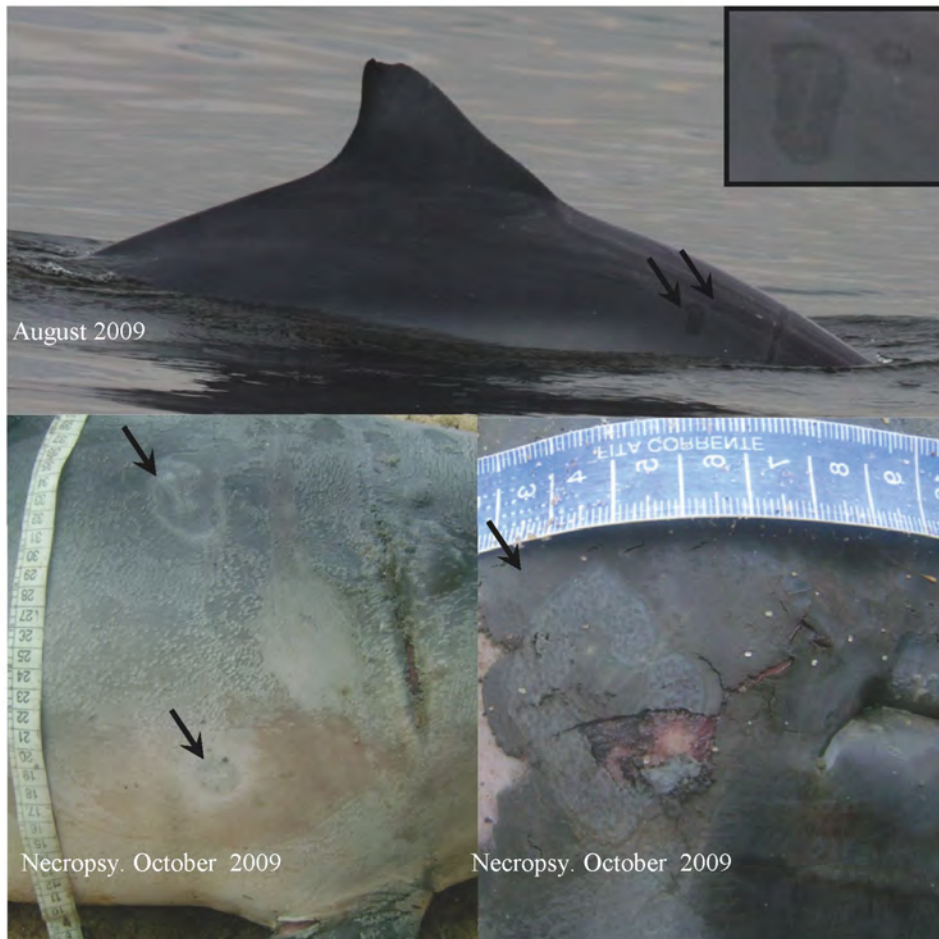


BG#47

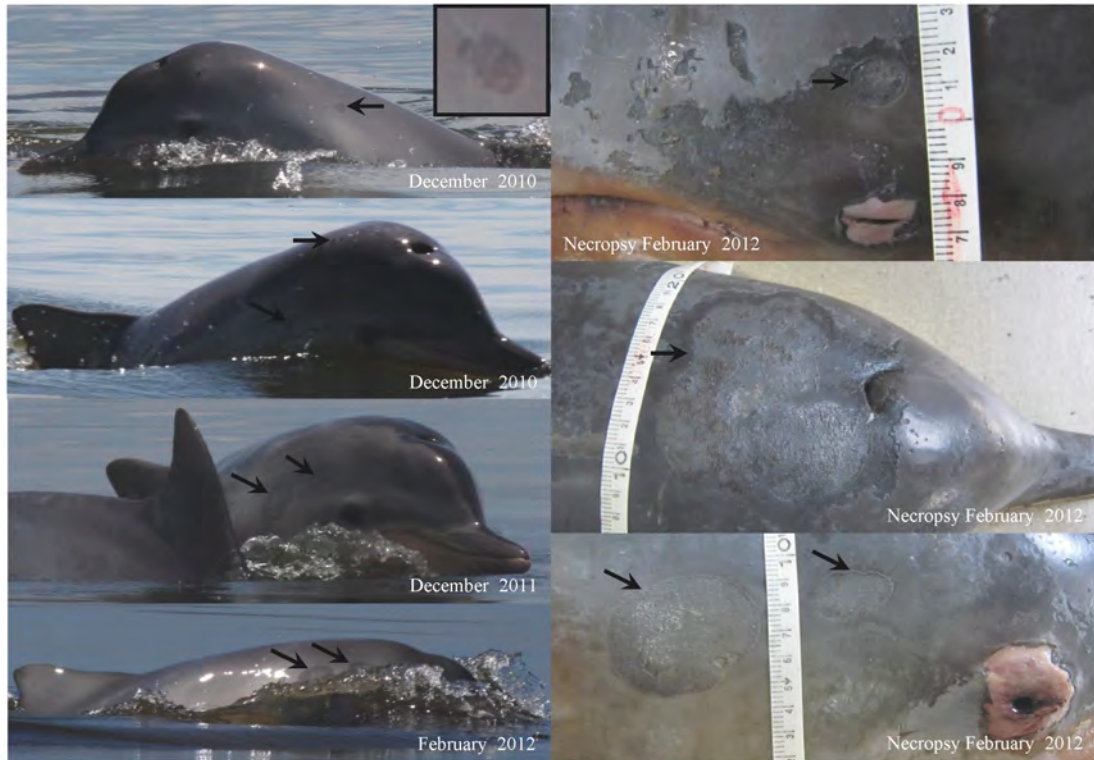




BG#89



MM672/BG#81



MM499/CalfBG#66

Fig. S1. Evolution of poxvirus-like skin lesions in five photo-identified Guiana dolphins (*Sotalia guianensis*) from Guanabara Bay. The individual identifications are BG#34, BG#47, BG#89, MM672/BG#81, and MM499/CalfBG#66.

Table S1. Description of the analyzed individuals, including number of evaluated specimens, species, sex (M: male, F: female, U: unknown), and number of skin samples (tattoo lesions and total number).

	SPECIES	n	SEX			ANALYZED SKIN SAMPLES	
			M	F	U	Tattoo ^a	Total
Odontoceti	Guiana dolphin <i>Sotalia guianensis</i>	31	18	13	-	2	43
	Common bottlenose dolphin <i>Tursiops truncatus</i>	7	6	1	-	3	12
	Melon-headed whale <i>Peponocephala electra</i>	6	3	3	-	-	6
	Short-finned pilot whale <i>Globicephala macrorhynchus</i>	2	1	1	-	-	2
	Atlantic spotted dolphin <i>Stenella frontalis</i>	4	2	1	1	-	13
	Clymene dolphin <i>Stenella clymene</i>	2	2	-	-	-	2
	Pantropical spotted dolphin <i>Stenella attenuata</i>	1	1	-	-	-	1
	Striped dolphin <i>Stenella coeruleoalba</i>	1	-	1	-	-	1

	Spinner dolphin <i>Stenella longirostris</i>	3	3	-	-	1	3
	Short-beaked common dolphin <i>Delphinus delphis</i>	1	1	-	-	-	2
	Pygmy killer whale <i>Feresa attenuata</i>	1	1	-	-	-	1
	Killer whale <i>Orcinus orca</i>	1	-	1	-	-	1
	Dwarf sperm whale <i>Kogia sima</i>	2	2	-	-	-	5
	Pygmy sperm whale <i>Kogia breviceps</i>	1	1	-	-	-	1
	Sperm whale <i>Physeter macrocephalus</i>	1	1	-	-	-	1
	Franciscana <i>Pontoporia blainvillei</i>	34	17	15	2	-	42
	Bolivian river dolphin <i>Inia boliviensis</i>	2	2	-	-	-	2
	Amazon river dolphin <i>Inia geoffrensis</i>	1	1	-	-	-	1
Mysticeti	Southern right whale <i>Eubalaena australis</i>	2	-	-	2	-	2
	Humpback whale <i>Megaptera novaeangliae</i>	9	4	4	1	-	9
	Bryde's whale <i>Balaenoptera brydei</i>	1	1	-	-	-	1
	TOTAL	113	67	40	6	6	151

^a The analyzed tattoo skin samples were collected from two Guiana dolphins, one common bottlenose dolphin, and one spinner dolphin, respectively.