

Arctic zooplankton do not perform diel vertical migration (DVM) during periods of midnight sun

Katarzyna Blachowiak-Samolyk^{1,*}, Slawek Kwasniewski¹, Katherine Richardson²,
Katarzyna Dmoch¹, Edmond Hansen³, Haakon Hop³, Stig Falk-Petersen³,
Lone Thybo Mouritsen²

¹Institute of Oceanology, Polish Academy of Sciences, Powstancow Warszawy Street 55, 81-712 Sopot, Poland

²University of Aarhus, Department of Marine Ecology, University of Aarhus, Finlandsgade 14, 8200 Aarhus, Denmark

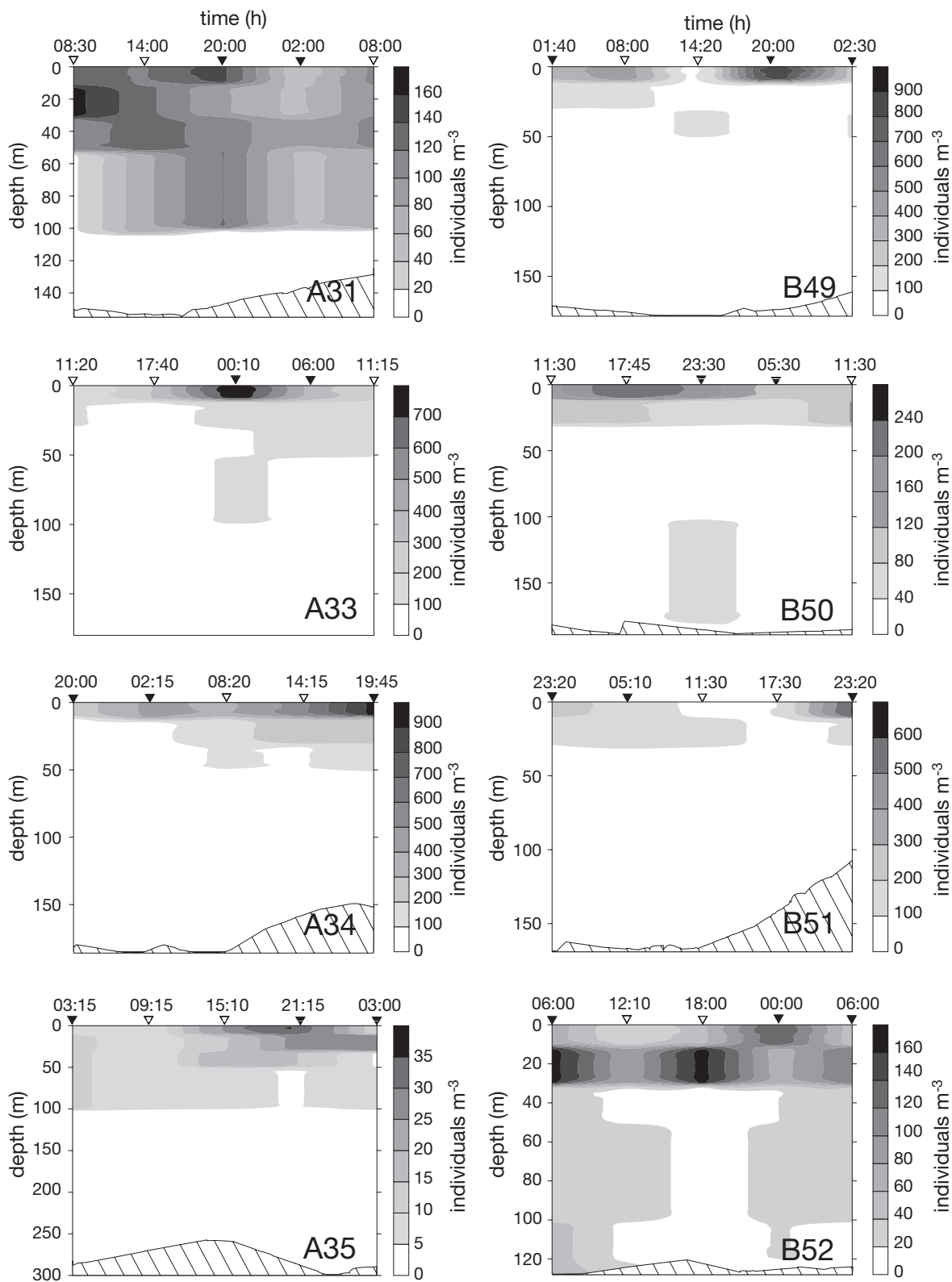
³Norwegian Polar Institute, 9296 Tromsø, Norway

Email: kasiab@iopan.gda.pl

Marine Ecology Progress Series 308:101–116 (2006)

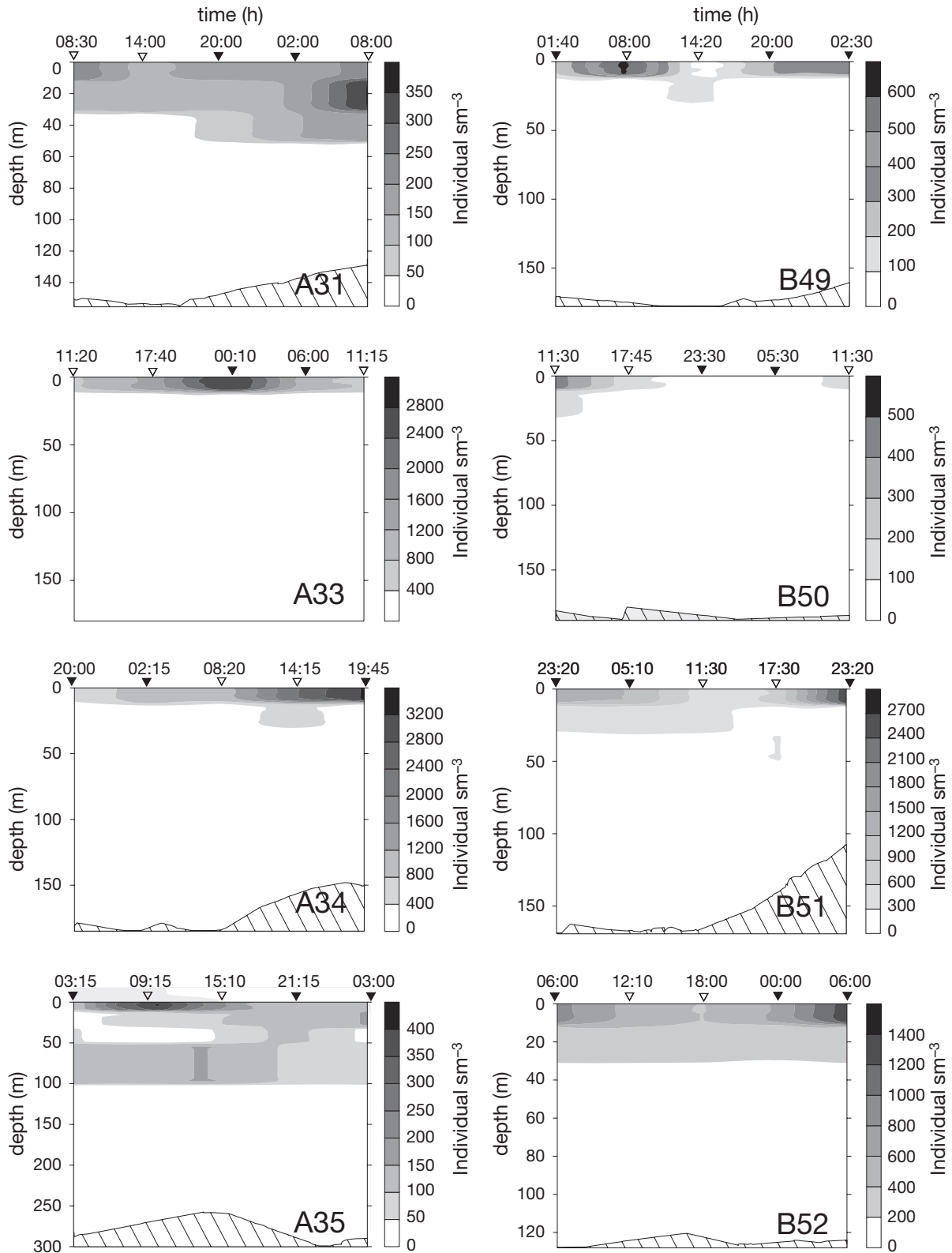
Appendix 1. Diurnal (24 h) changes in abundance (ind. m⁻³) of dominant zooplankton taxa at stations along Transect A and B: (a) *Pseudocalanus* spp., (b) copepod nauplii, (c) *Oithona similis*, (d) *Calanus finmarchicus*, (e) *C. glacialis*, (f) *Microcalanus* spp., (g) *Metridia longa*. Note changes in scale for abundance. Bottom contour indicated by oblique line pattern. Water layers sampled: 0–10, 10–30, 30–50, 50–100 m, and 100 m–bottom. Triangles indicate exact time of sampling. ▽ 'day' hauls, ▼: 'night' hauls according to division from Fig. 3

a *Pseudocalanus* spp.

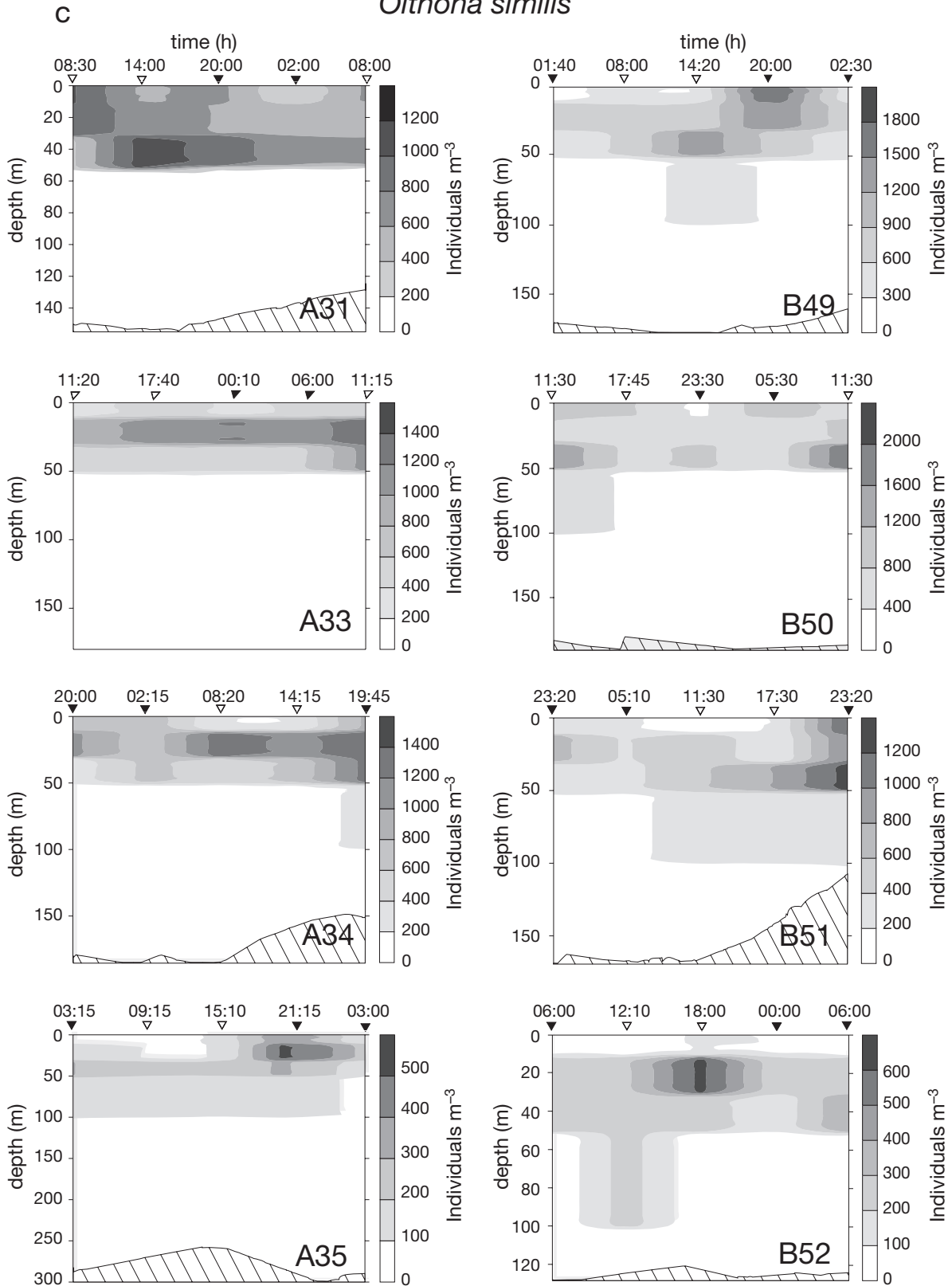


b

copepod nauplii

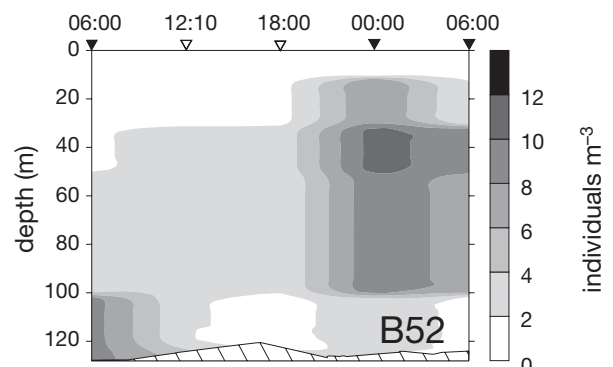
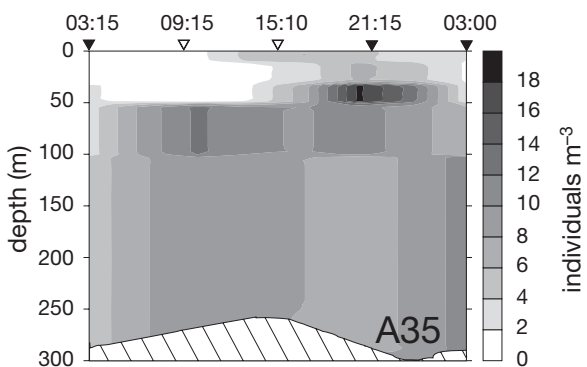
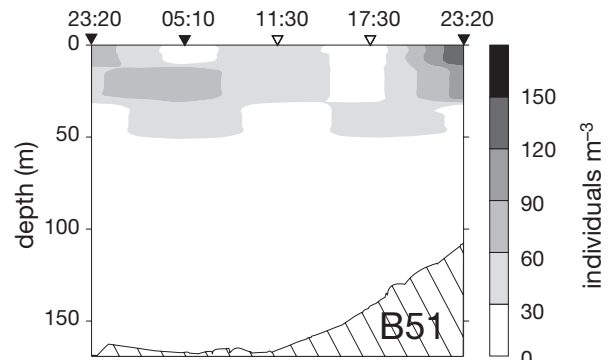
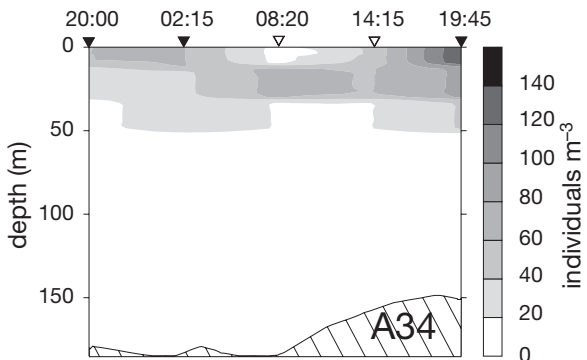
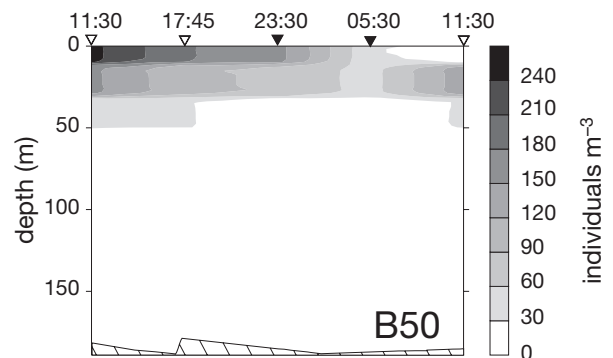
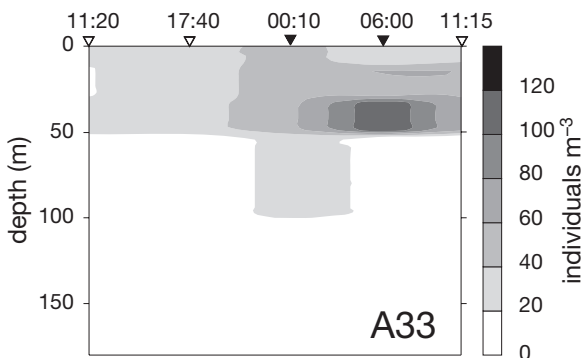
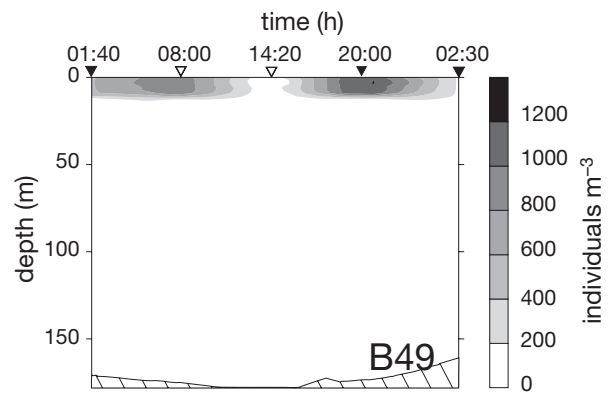
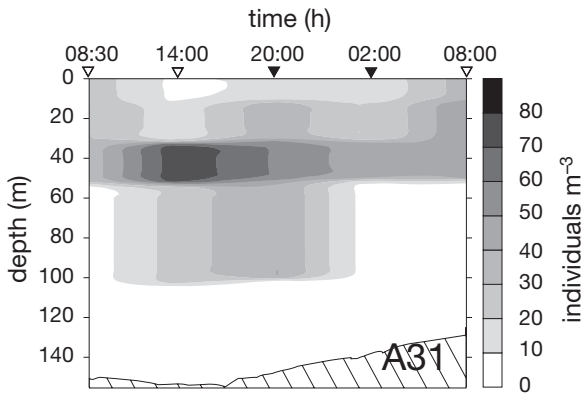


Oithona similis

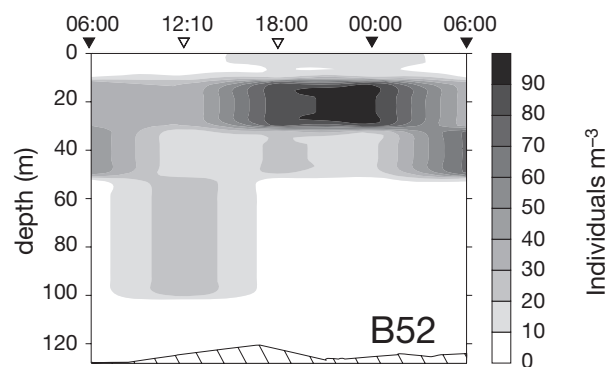
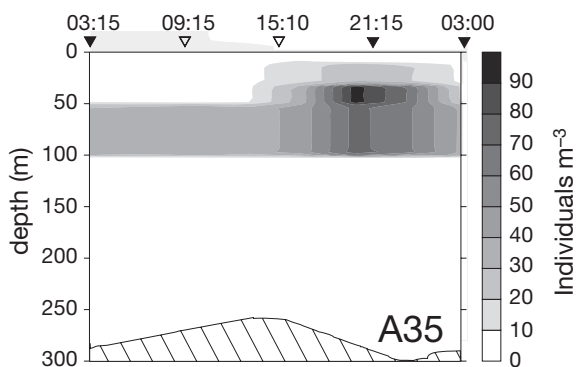
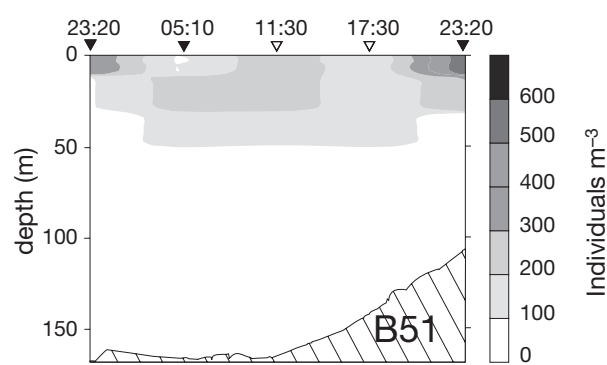
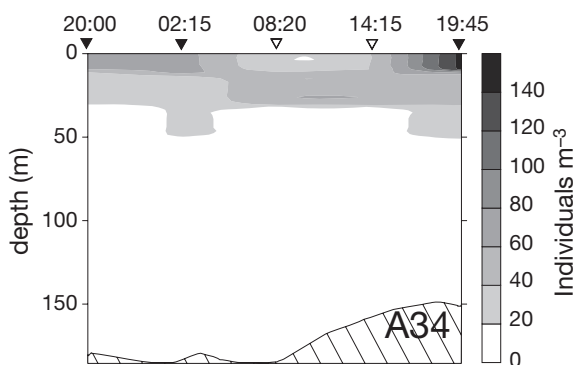
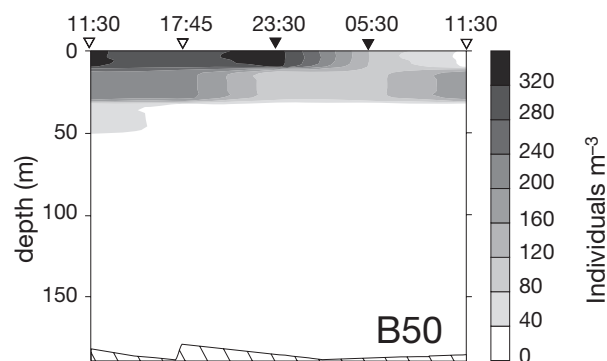
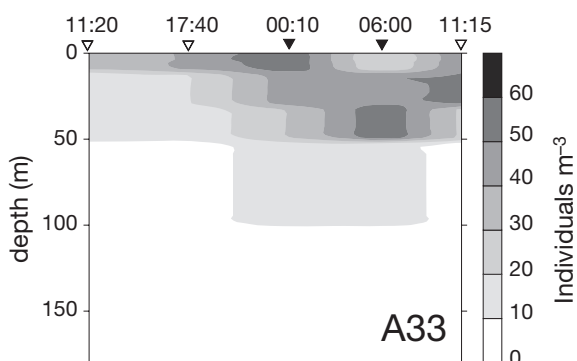
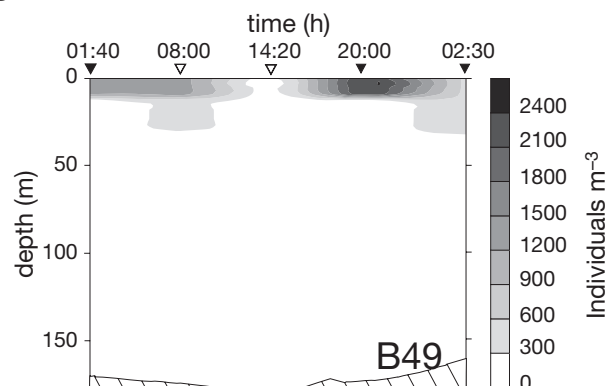
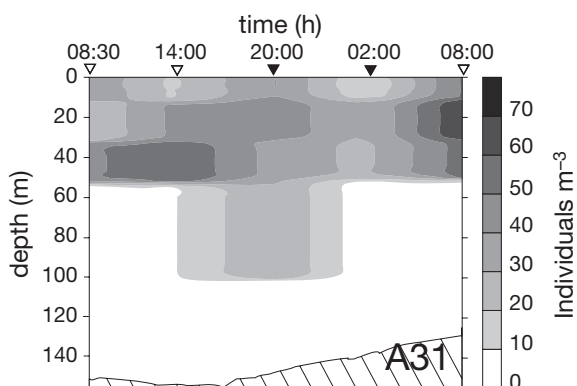


d

Calanus finmarchicus

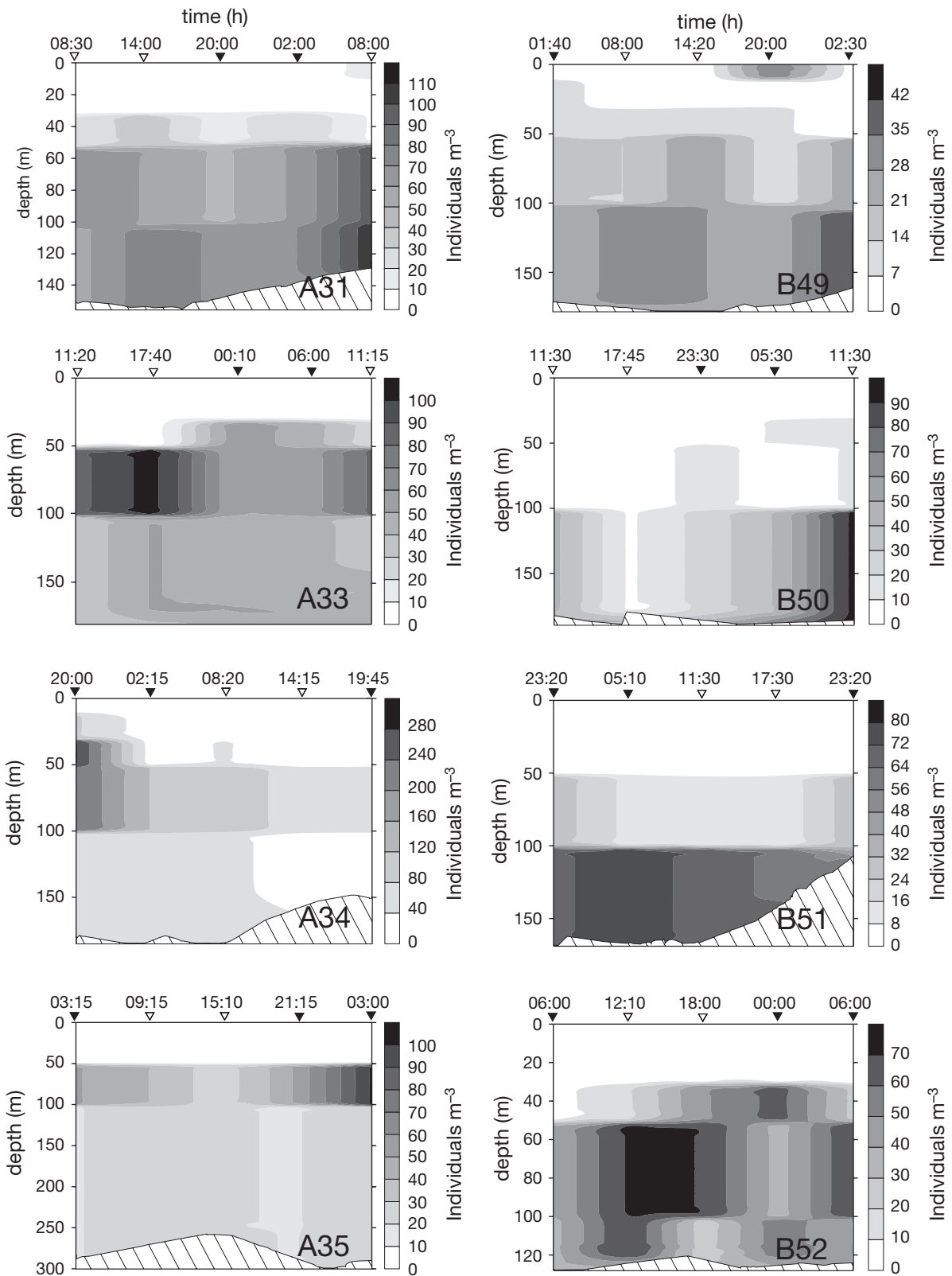


e *Calanus glacialis*



f

Microcalanus spp.



g

Metridia longa

