

Temporal structure of diving behaviour in sympatric Antarctic and subantarctic fur seals

Sebastián P. Luque^{1,2,*}, John P. Y. Arnould³, Christophe Guinet²

¹Department of Biology, Memorial University, St. John's, Newfoundland and Labrador A1B 3X9, Canada

²Centre d'Etudes Biologiques de Chizé, CNRS, 79 360 Villiers en Bois, France

³School of Life and Environmental Sciences, Deakin University, 221 Burwood Highway, Burwood, Victoria 3125, Australia

*Email: spluque@gmail.com

Marine Ecology Progress Series 372:277–287 (2008)

Appendix 1. Typical Antarctic and subantarctic fur seal dive profiles

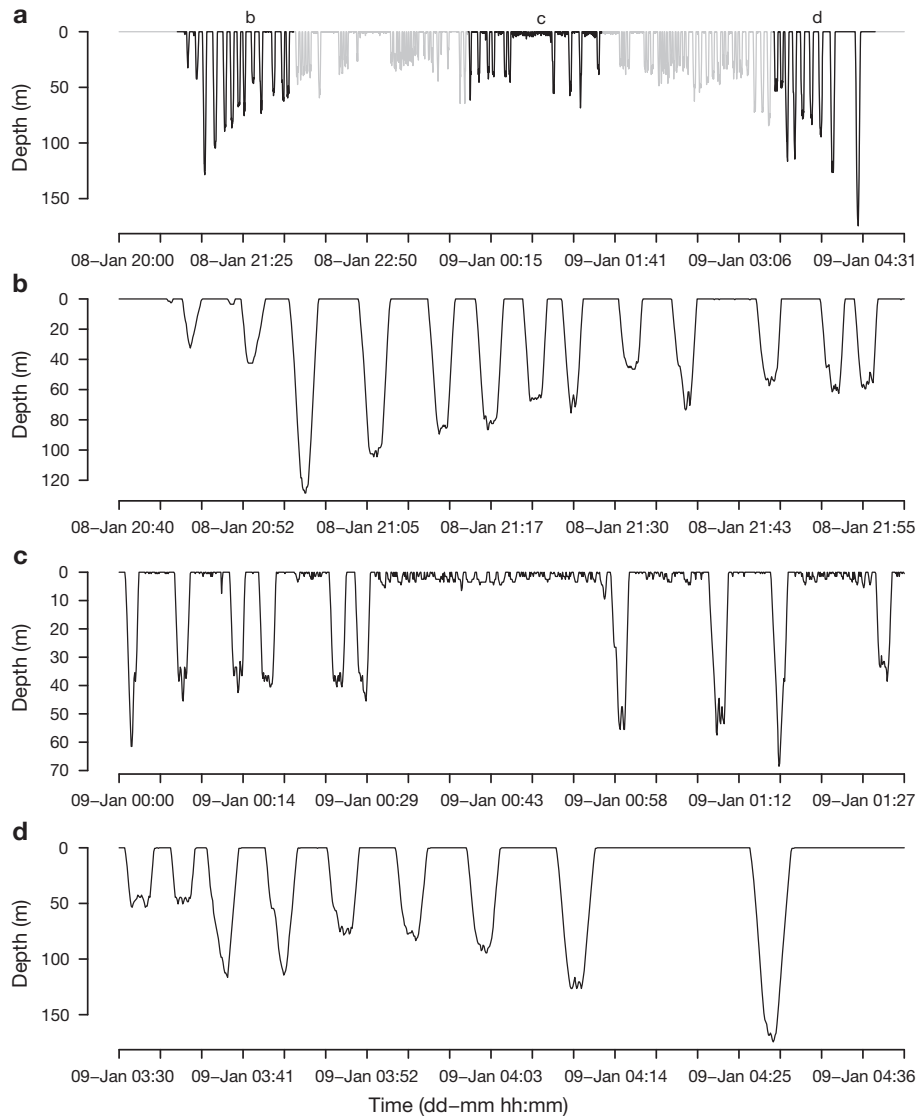


Fig. A1. *Arctocephalus gazella* (Antarctic fur seal). Typical dive profile of a lactating female showing strong nocturnal changes in depth: (a) an entire night of foraging (black lines denote zoomed region in subsequent panels), (b) dusk foraging, (c) midnight foraging, and (d) dawn foraging

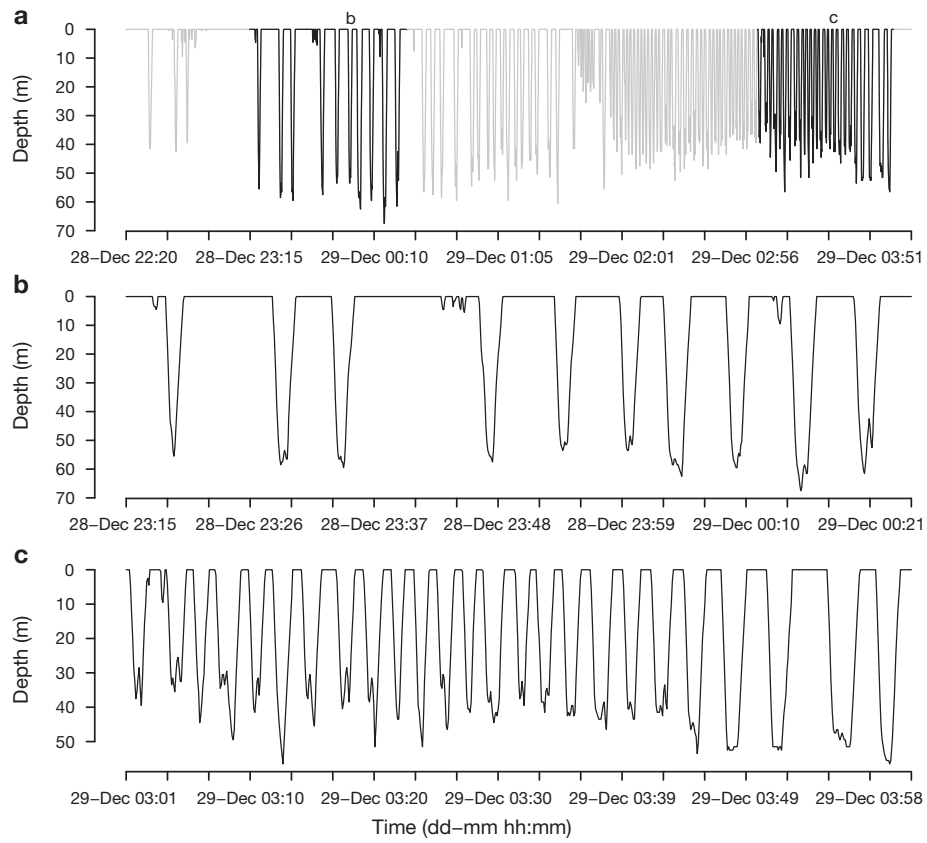


Fig. A2. *Arctocephalus tropicalis* (subantarctic fur seal). Typical dive profile of a lactating female showing little nocturnal changes in depth: (a) an entire night of foraging (black lines denote zoomed region in subsequent panels), (b) foraging before midnight, and (c) foraging after midnight