
The following appendix accompanies the article

Marine shore fishes and biogeographic subdivisions of the Tropical Eastern Pacific

D. Ross Robertson^{1,*}, Katie L. Cramer²

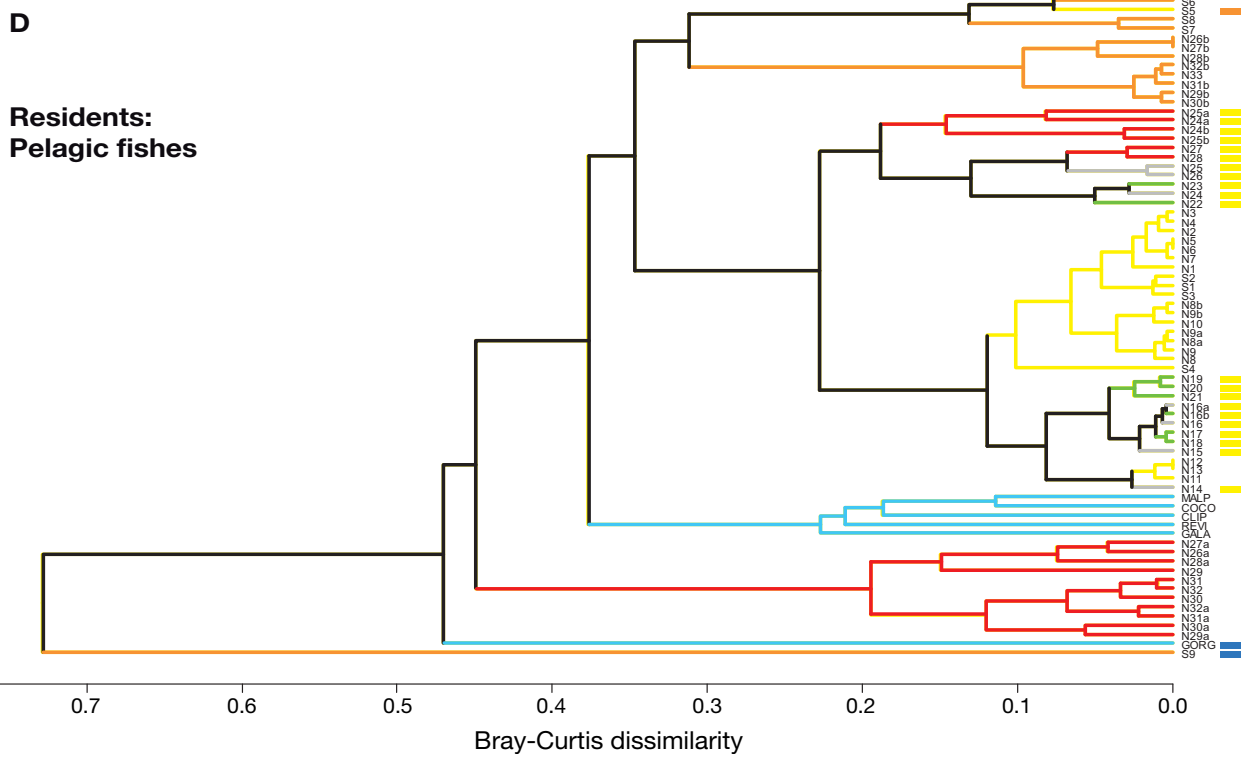
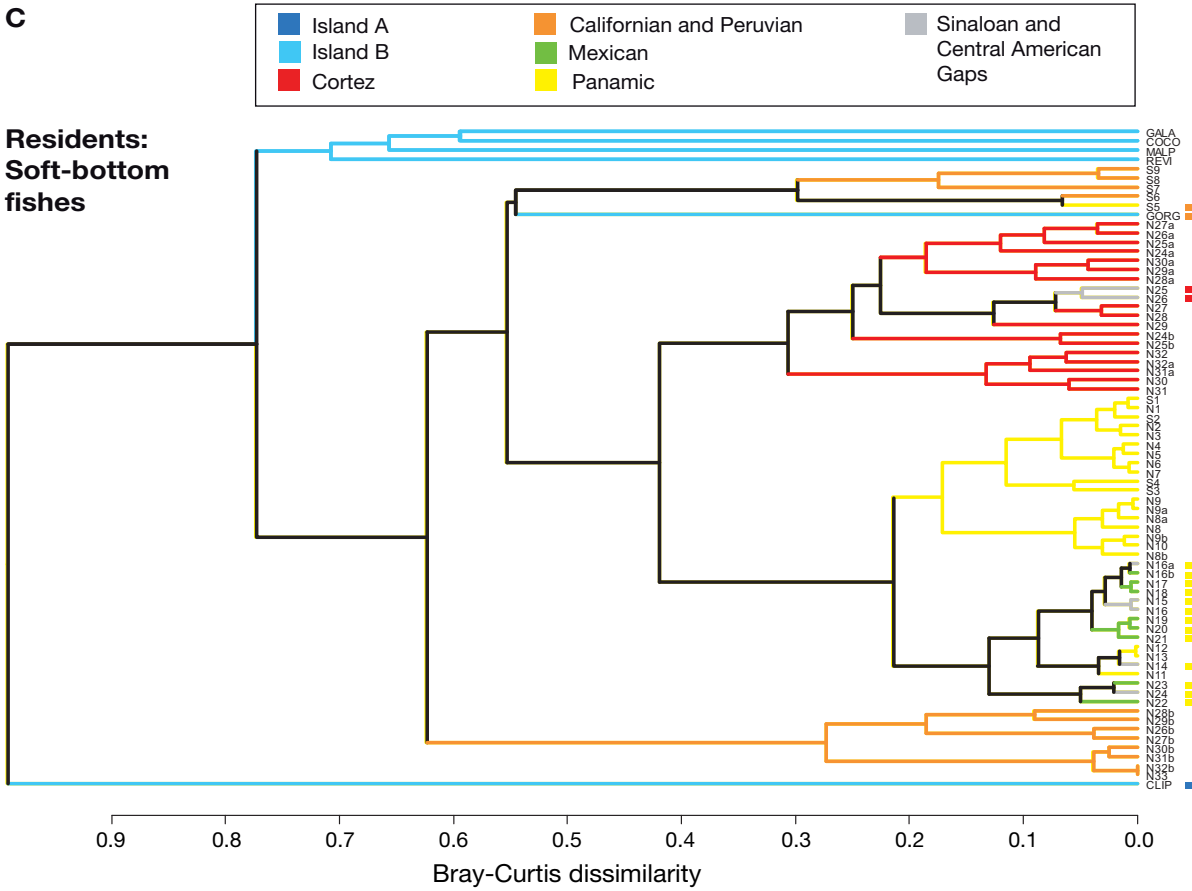
¹Smithsonian Tropical Research Institute, Balboa, Republic of Panamá

²Center for Marine Biodiversity and Conservation, Scripps Institution of Oceanography, University of California, San Diego, California, USA

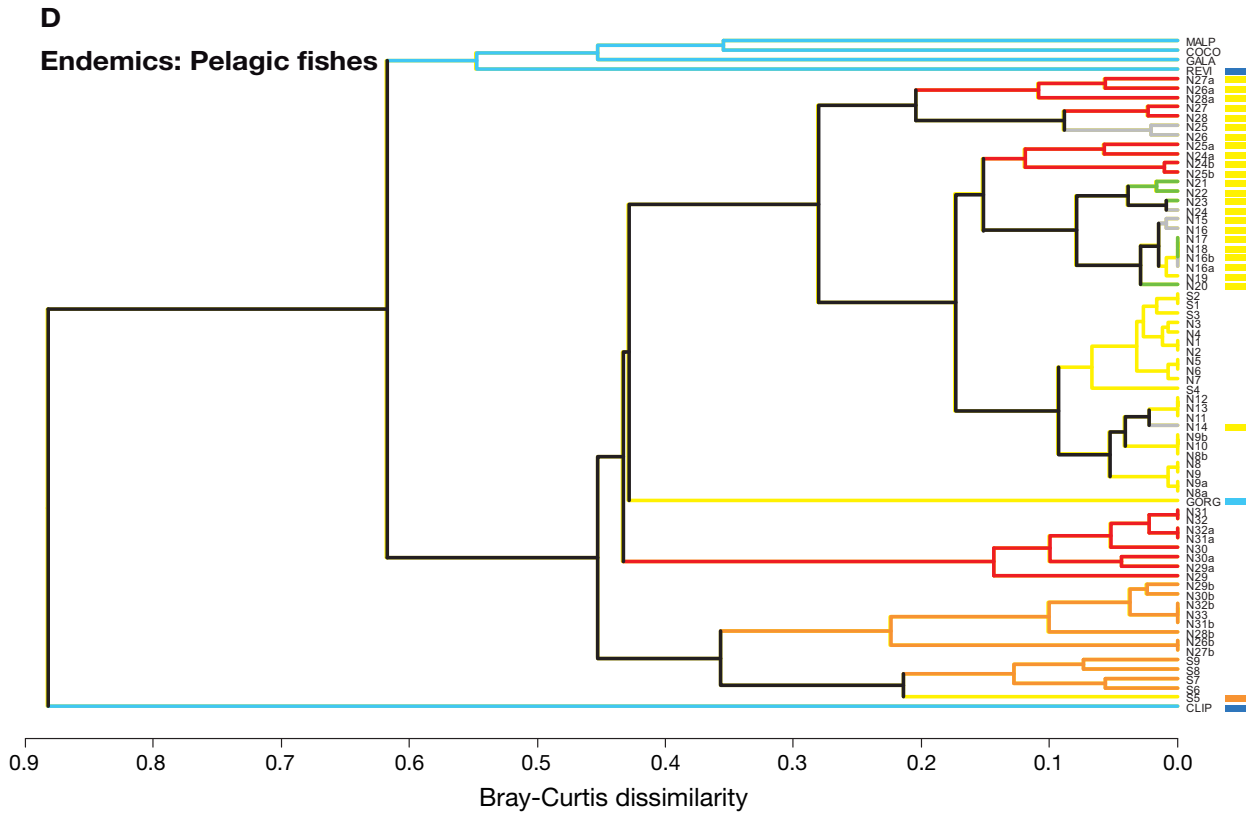
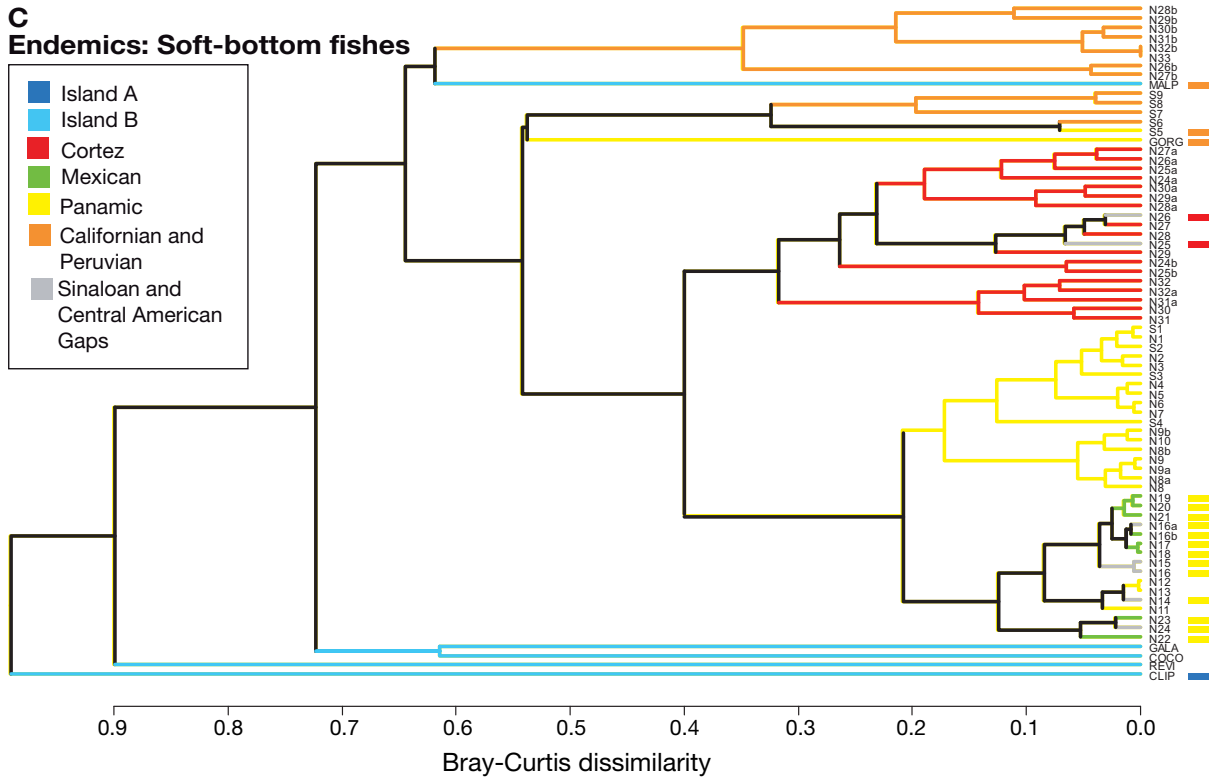
**Email: drr@stri.org*

Marine Ecology Progress Series 380:1–16 (2009)

Appendix 1. Cluster dendrograms of relationships among different groups of fishes in the Tropical Eastern Pacific biogeographic region. Those groups include all species and all regional endemics, plus 3 habitat categories within each of those 2 groups: reef-fishes, soft-bottom fishes, and pelagic fishes



groups A & B differ among dendrograms (see Fig. 2 for definitions). N: north; S: south; GORG: Gorgona; CLIP: Clipperton; REVI: Revillagigedos; MALP: Malpelo; COCO: Cocos; GALA: Galapagos



groups A & B differ among dendrograms (see Fig. 3 for definitions). N: north; S: south; GORG: Gorgona; CLIP: Clipperton; REVI: Revillagigedos; MALP: Malpelo; COCO: Cocos; GALA: Galapagos