

Effects of abiotic stressors on infaunal burrowing and associated sediment characteristics

R. Przeslawski^{1,3,*}, Q. Zhu², R. Aller²

¹Ecology & Evolution Department and ²School of Marine and Atmospheric Sciences, Stony Brook University, Stony Brook, New York 11794, USA

³Present address: Geoscience Australia, Marine and Coastal Environment Group, GPO Box 378, Canberra, Australian Capital Territory 2601 Australia

*Email: rachel.przeslawski@ga.gov.au

Marine Ecology Progress Series 392:33–42 (2009)

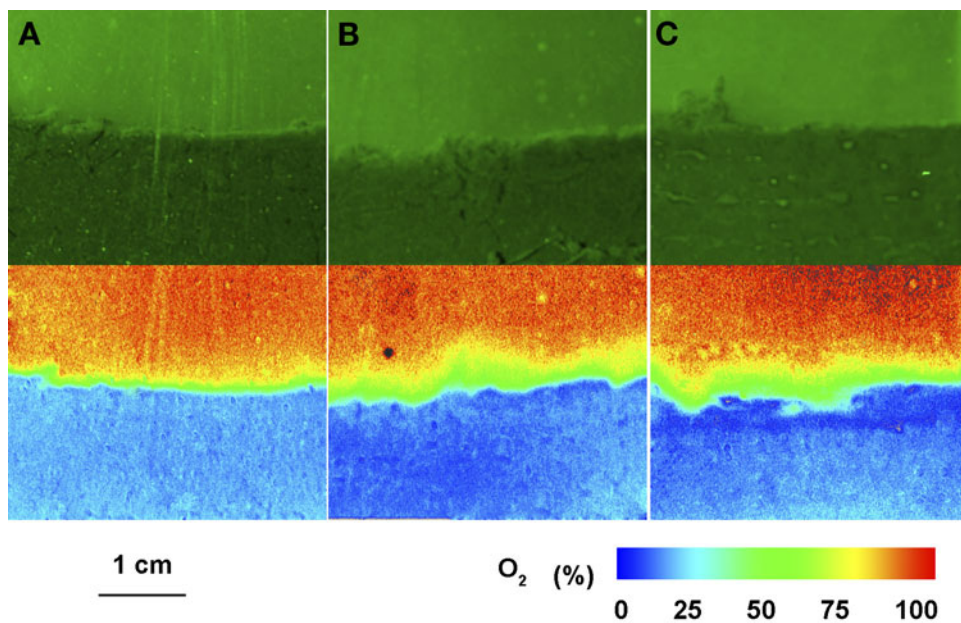


Fig. S1. *Capitella* sp. 1. Effects of capitellid burrowing on oxygen gradients across 3 food treatments: (A) low (no *Ulva* added), (B) moderate (1.35 g *Ulva* per 63 cm³ sediment), and (C) high (4.99 g *Ulva* per 63 cm³ sediment). Top panels represent photos taken in visible light (green band). Bottom panels represent O₂ planar optode pseudocolor images (O₂ scale key at lower right: % saturation at experiment temperature)

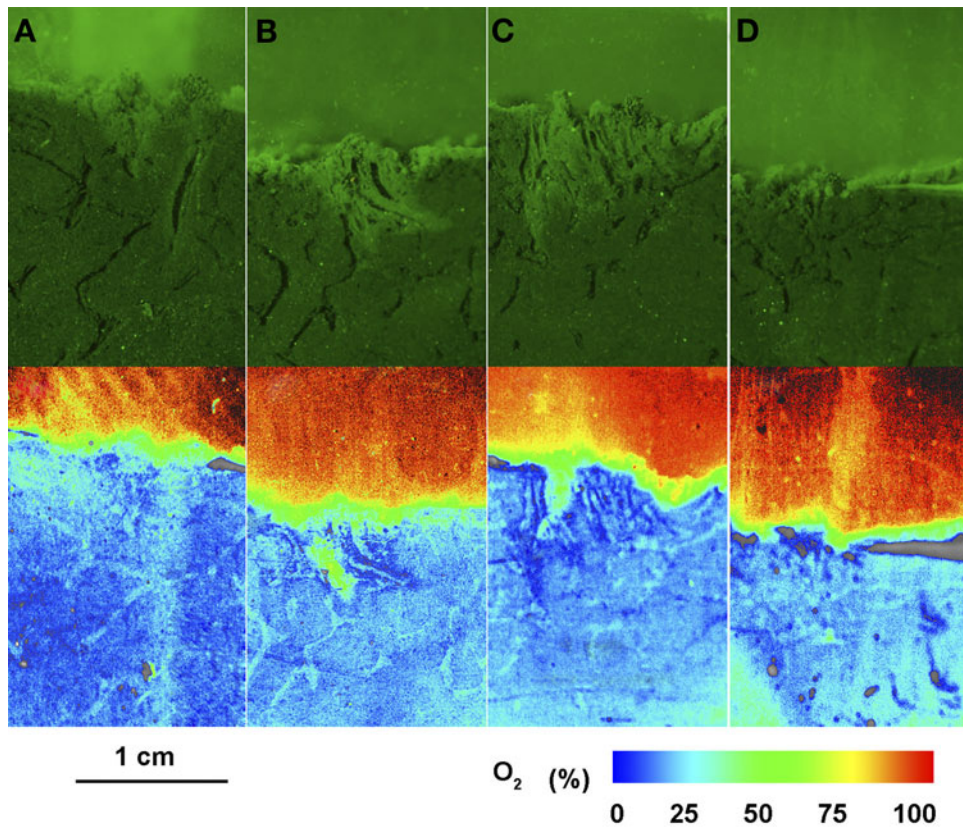


Fig. S2. *Capitella* sp. 1. Effects of capitellid burrowing on oxygen gradients across 4 salinity treatments: (A) 16, (B) 22, and (C) 28, and (D) 34. Top panels represent photos taken in visible light (green band). Bottom panels represent O_2 planar optode pseudocolor images (O_2 scale key at lower right: % saturation at experiment temperature). Gray patches indicate areas that were damaged on the fluorosensor membrane, possibly due to degradation by sulfur bacteria or acids

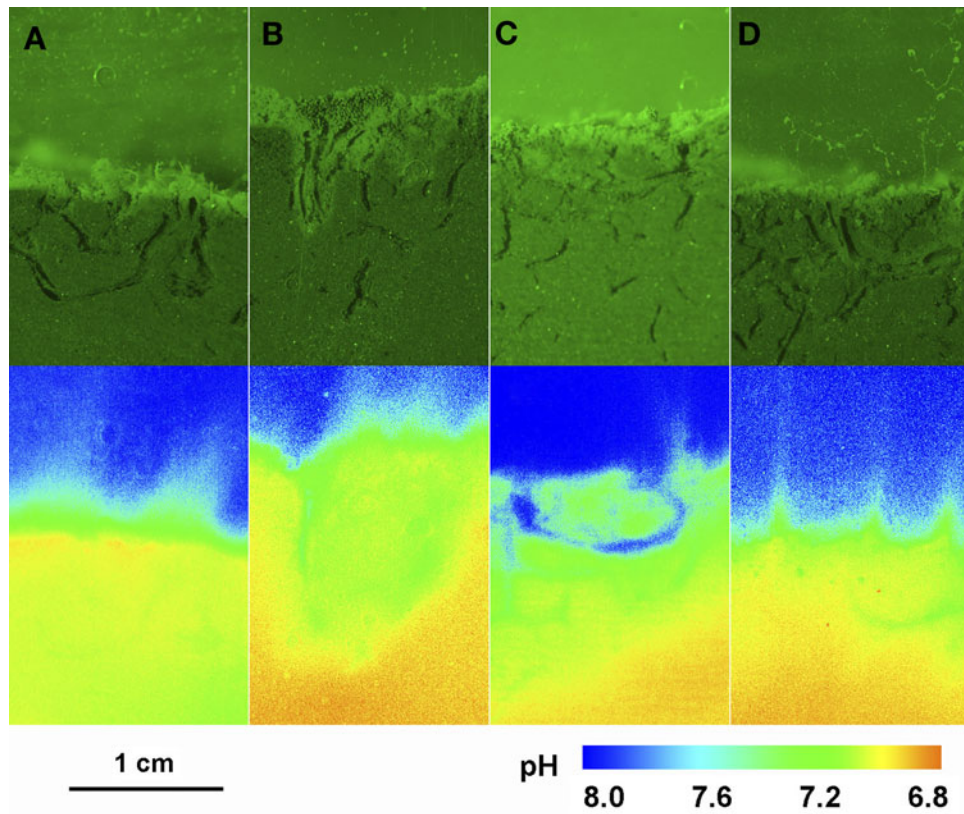


Fig. S3. *Capitella* sp. 1. Effects of capitellid burrowing on pH across 4 salinity treatments: (A) 16, (B) 22, and (C) 28, and (D) 34. Top panels represent photos taken in visible light (green band). Bottom panels represent pseudocolor images of sediment pH corresponding to the overlying visible images (pH color key at lower right)