

*The following supplement accompanies the article*

# **Changing spatial distribution of fish stocks in relation to climate and population size on the Northeast United States continental shelf**

**Janet A. Nye<sup>1,\*</sup>, Jason S. Link<sup>1</sup>, Jonathan A. Hare<sup>2</sup>, William J. Overholtz<sup>1</sup>**

<sup>1</sup>National Marine Fisheries Service, Northeast Fisheries Science Center, Woods Hole Laboratory, 166 Water St., Woods Hole, Massachusetts 02543, USA

<sup>2</sup>National Marine Fisheries Service, Northeast Fisheries Science Center, Narragansett Laboratory, 28 Tarzwell Drive, Narragansett, Rhode Island 02882, USA

\*Email: janet.nye@noaa.gov

*Marine Ecology Progress Series 393: 111–129 (2009)*

**Supplement**

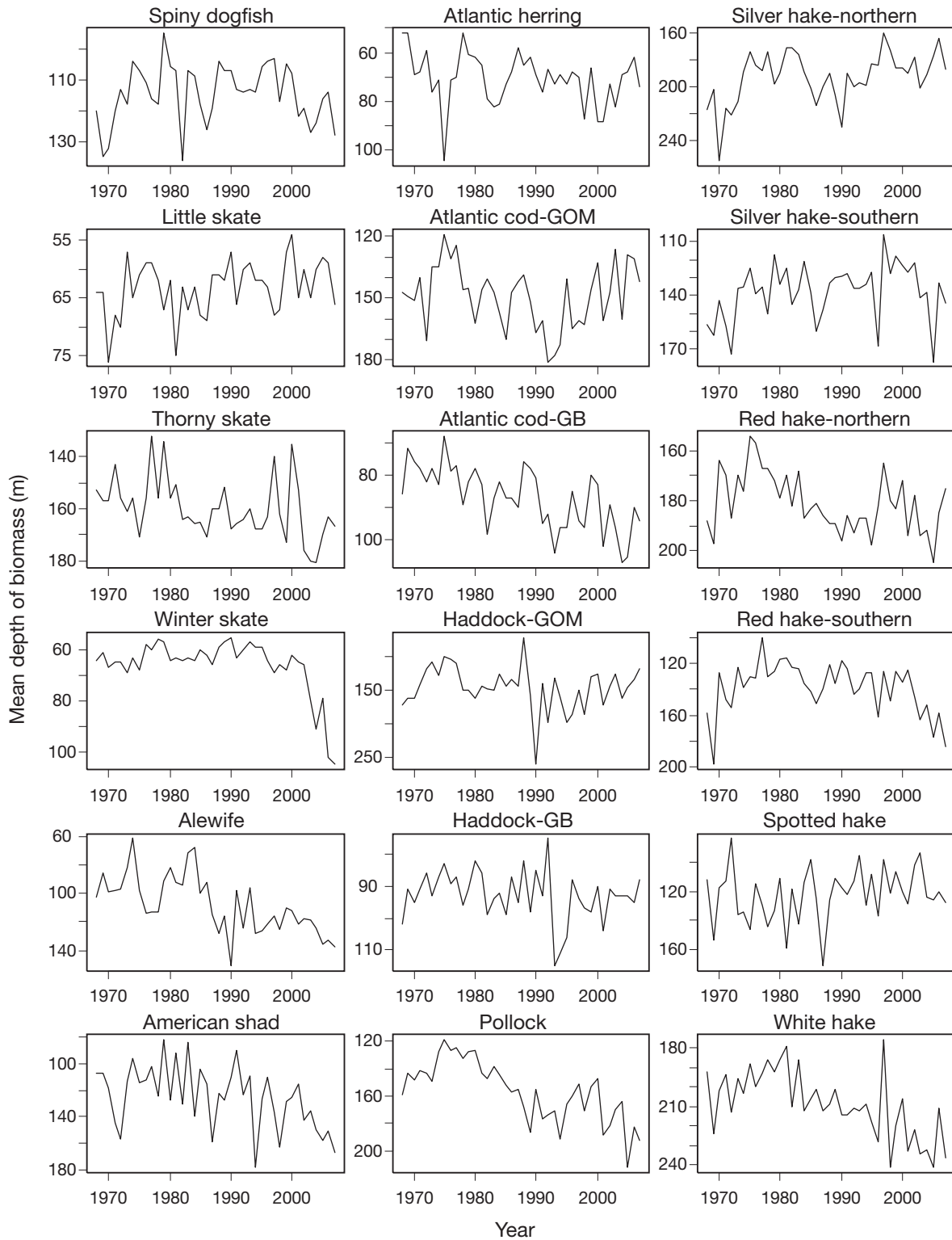


Fig. S1. Time series of mean depth of occurrence for 36 fish stocks caught during the Northeast Fisheries Science Center (NEFSC) multispecies survey

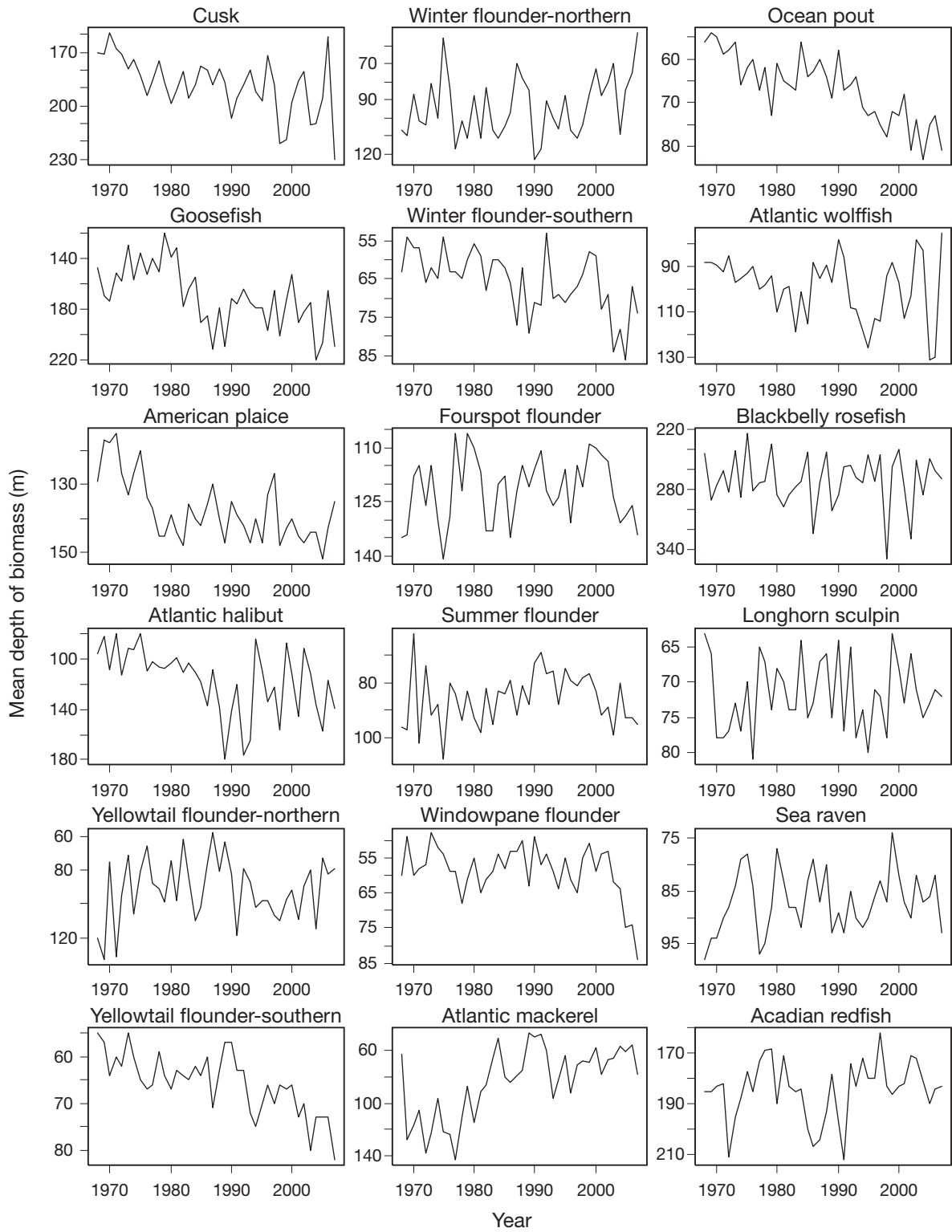


Fig. S1 (continued)

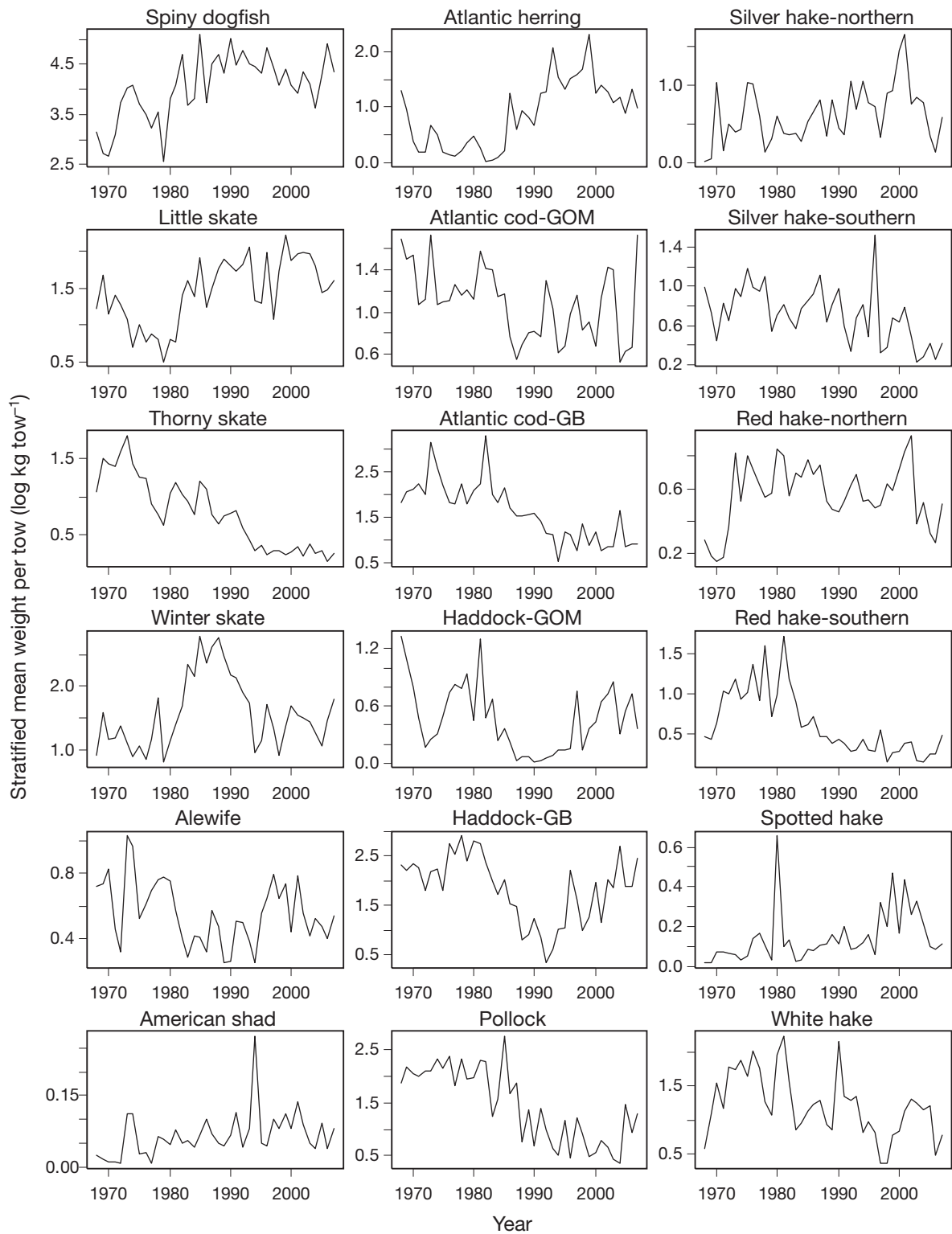


Fig. S2. Time series of population biomass (stratified mean weight per tow, log transformed) for 36 fish stocks caught during the Northeast Fisheries Science Center (NEFSC) multispecies survey. Note that the scale on the y-axis is different for each stock

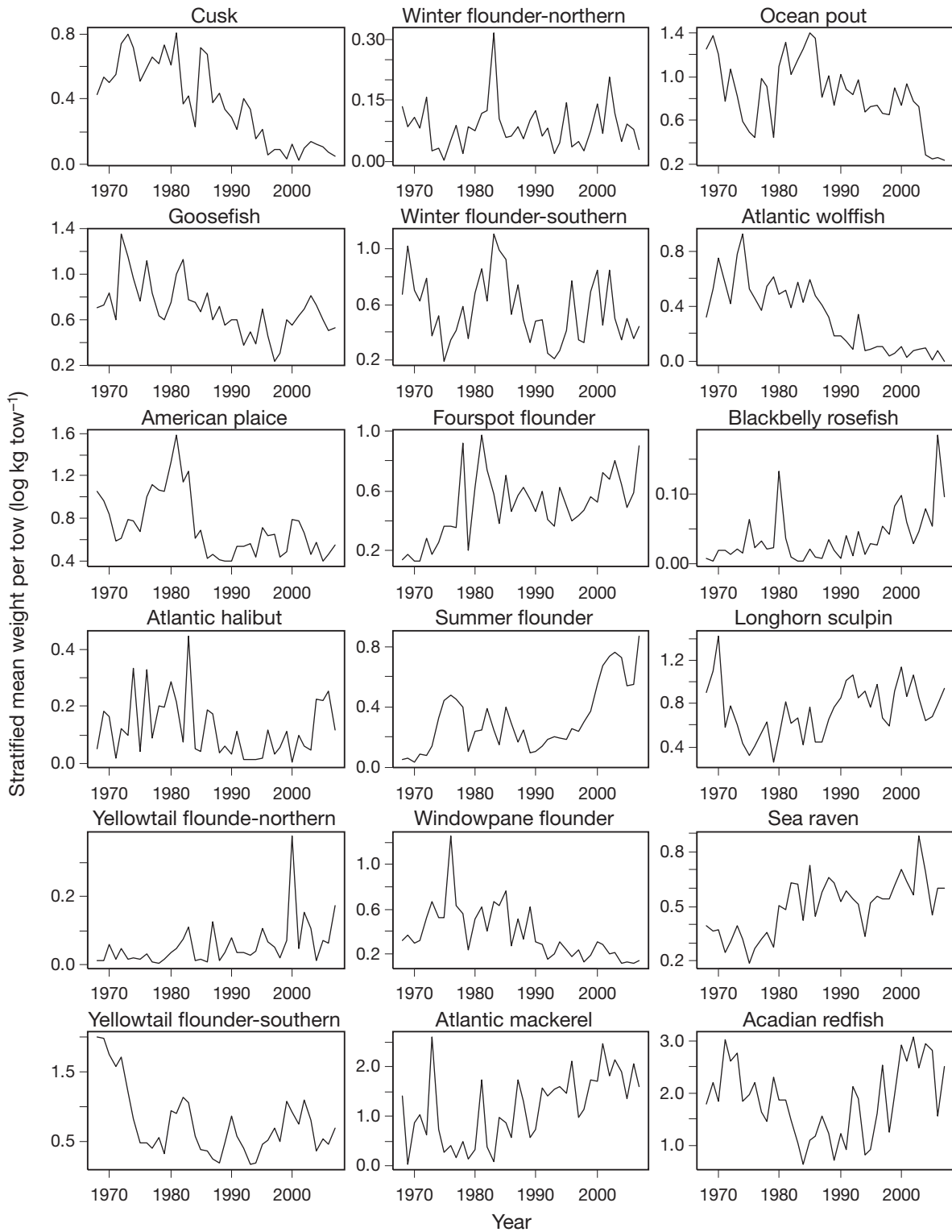


Fig. S2 (continued)

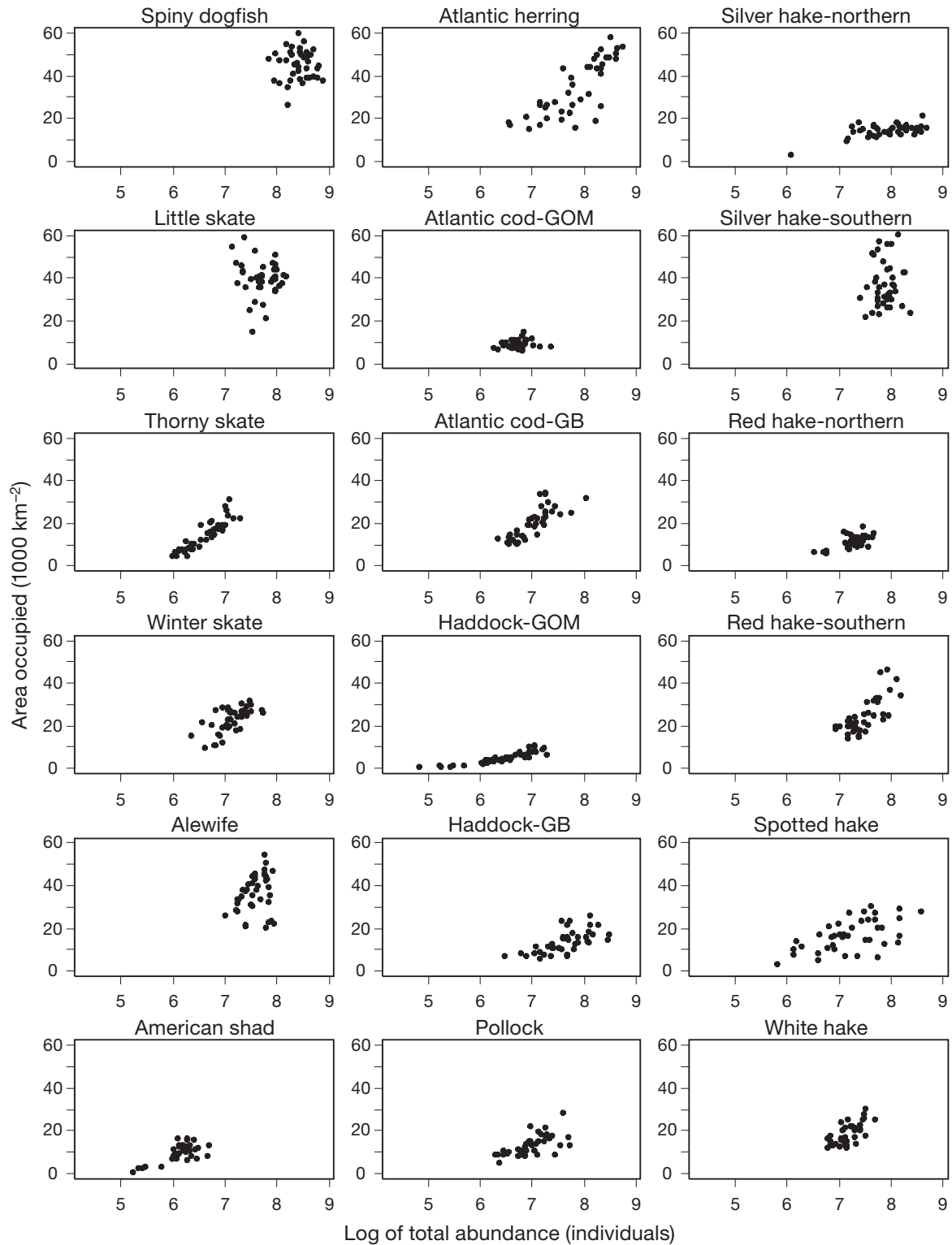


Fig. S3. Area–abundance relationships for 36 fish stocks caught during the Northeast Fisheries Science Center (NEFSC) multispecies survey

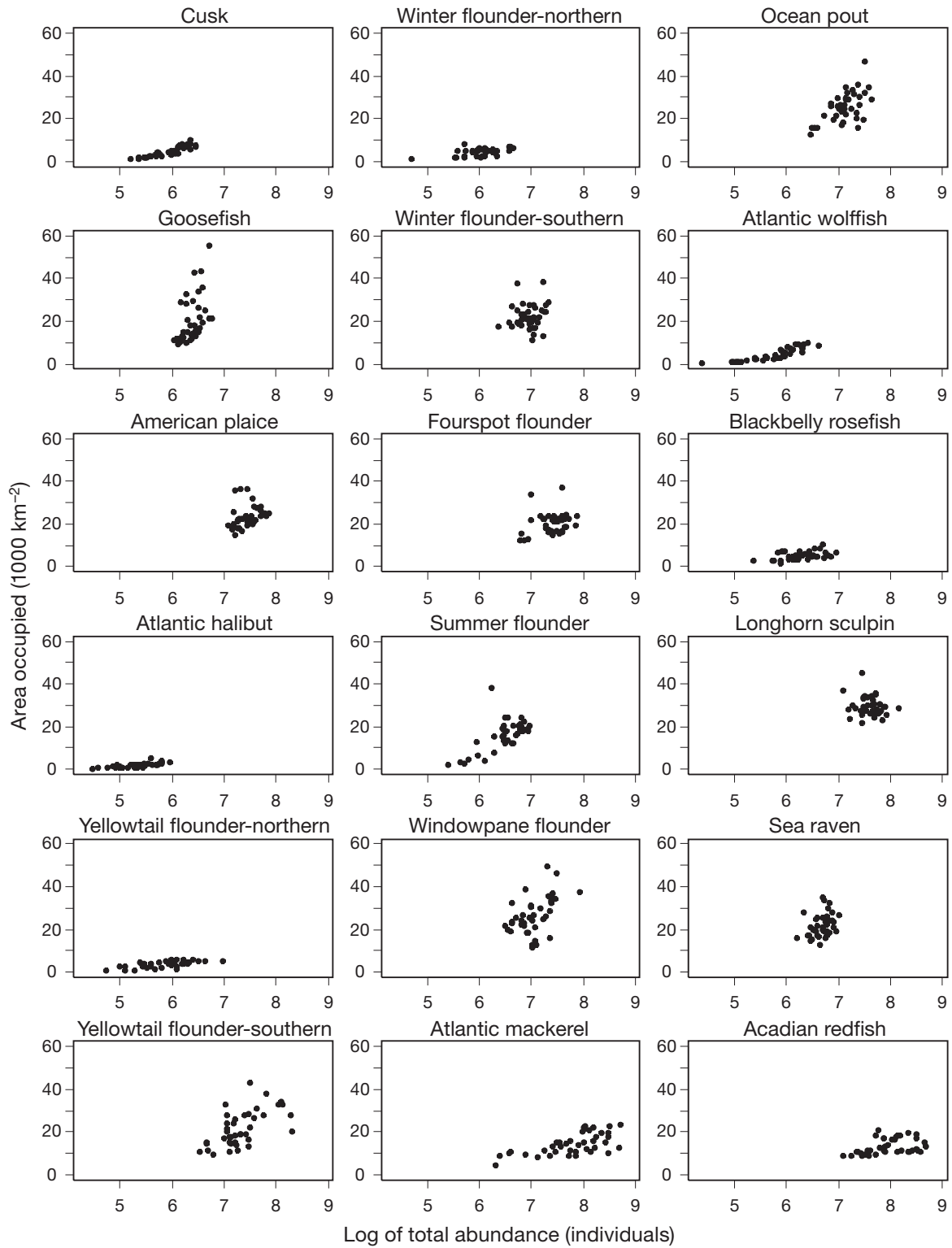


Fig. S3 (continued)