

*The following supplement accompanies the article*

## **Character lability in deep-sea bamboo corals (Octocorallia, Isididae, Keratoisidinae)**

**Luisa F. Dueñas, Juan A. Sánchez\***

**Departamento de Ciencias Biológicas-Facultad de Ciencias, Laboratorio de Biología Molecular Marina (BIOMMAR),  
Universidad de los Andes, Carrera 1 #18A-10, Bogotá, Colombia**

\*Corresponding author. Email: juansanc@uniandes.edu.co

*Marine Ecology Progress Series 397:11–23 (2009)*

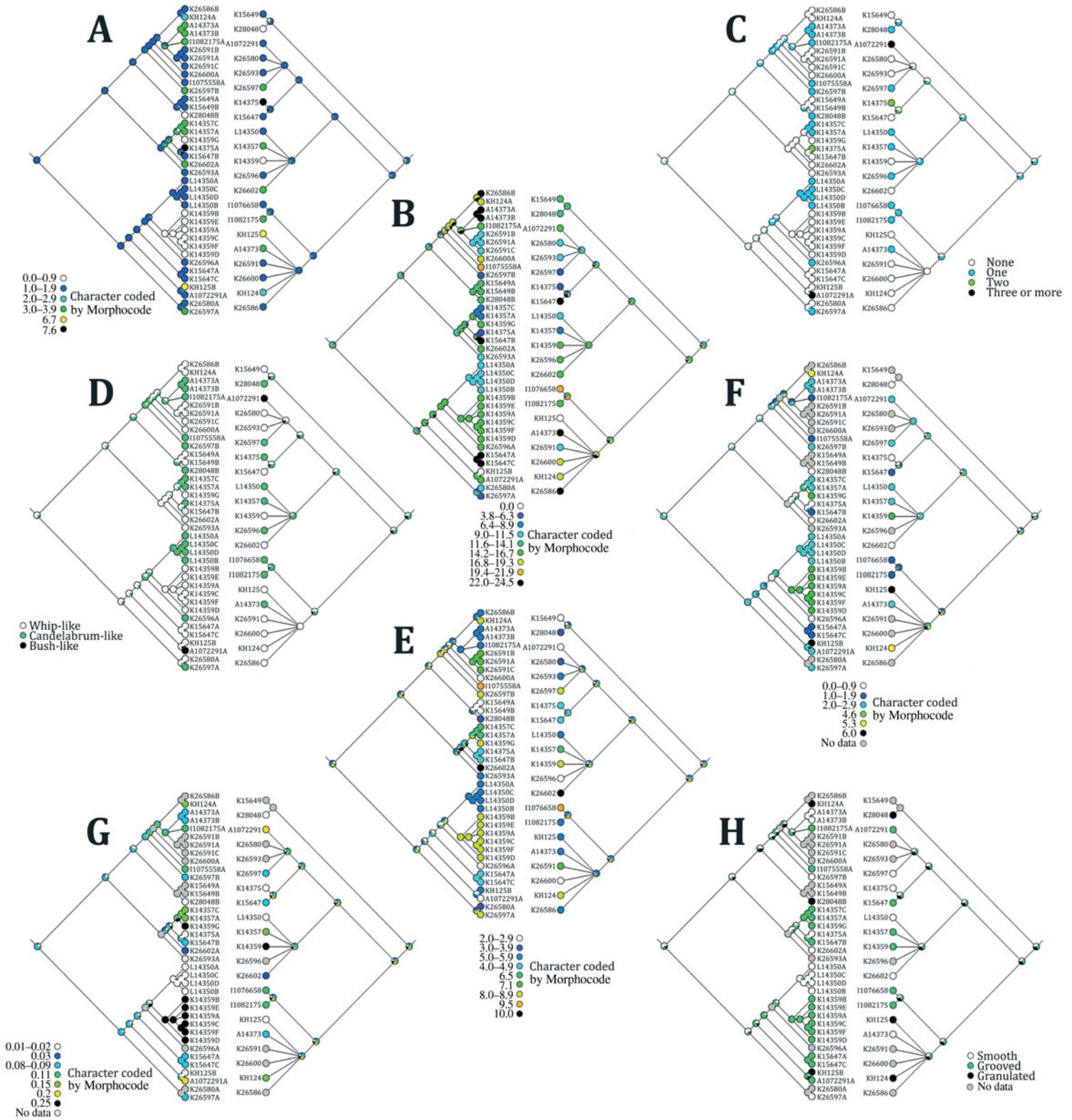


Fig. S1. Bamboo coral ancestral character state reconstruction on ITS2 (left) and 16S (right) phylogenies. (A) Internode width (III) values in mm; (B) internode/node length (IV) values in mm; (C) branching plane (VI); (D) colony appearance (VII); (E) polyp length (VIII) values in mm; (F) polyp sclerite (needle) length (X) values in mm; (G) polyp sclerite (needle) width (XI) values in mm; and (H) polyp sclerite texture (XII). The shaded/colored portions of the pies correspond to the calculated probabilities of the reconstruction. For complete sample names refer to Table 1 and/or Figs. 3 & 4. For the mean absolute values for the species see Table 2