

The following supplement accompanies the article

Basking sharks in the northeast Atlantic: spatio-temporal trends from sightings in UK waters

Matthew J. Witt^{1,2,*}, Tom Hardy³, Louise Johnson⁴, Catherine M. McClellan²,
Stephen K. Pikesley², Sue Ranger^{2,5}, Peter B. Richardson⁵, Jean-Luc Solandt⁵,
Colin Speedie⁴, Ruth Williams³, Brendan J. Godley²

¹Environment and Sustainability Institute, University of Exeter, Cornwall Campus, Penryn TR10 9EZ, UK

²Centre for Ecology and Conservation, University of Exeter, Cornwall Campus, Penryn TR10 9EZ, UK

³Cornwall Wildlife Trust, Allet, Cornwall, UK

⁴Wave Action, 3 Beacon Cottages, Falmouth TR11 2LZ, UK

⁵Marine Conservation Society, Ross on Wye, HR9 5NB, UK

*Email: m.j.witt@exeter.ac.uk

Marine Ecology Progress Series 459: 121–134 (2012)

Supplement 1. Additional data

Table S1. *Cetorhinus maximus*. Database preparation and filtering, showing number of records (with percentage removed in parentheses). BSW: Basking Shark Watch, SSW: Seaquest Southwest

| Reason for removal | BSW | SSW |
|--|-------------|-------------|
| Records received | 12872 | 3494 |
| Duplicate records | 183 (1.4) | - |
| Records removed from SSW as potentially matching BSW | - | 397 (11.4) |
| Records not of basking sharks | 1 (0.01) | - |
| Records prior to 1988 | 284 (2.2) | - |
| Records outside study area (UK continental shelf) | 53 (0.4) | 22 (0.6) |
| No/implausible coordinates or place name | 1123 (8.7) | 70 (2.0) |
| Records with no/implausible date of sighting | 6 (0.05) | - |
| Records with no number of sharks sighted | 354 (2.8) | - |
| Records from effort-related surveys | 1577 (12.3) | 385 (11.0) |
| Records of dead sharks | 130 (1.0) | - |
| Records remaining | 9161 (71.2) | 2620 (75.0) |

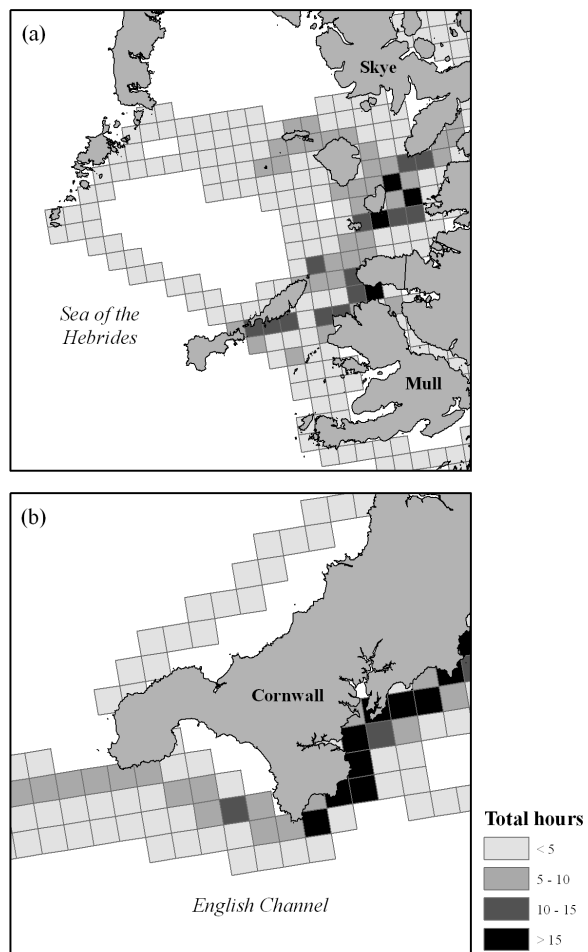


Fig. S1. Total hours surveyed by boat in (a) western Scotland (2002–2006) and (b) southwest England (2002–2005)

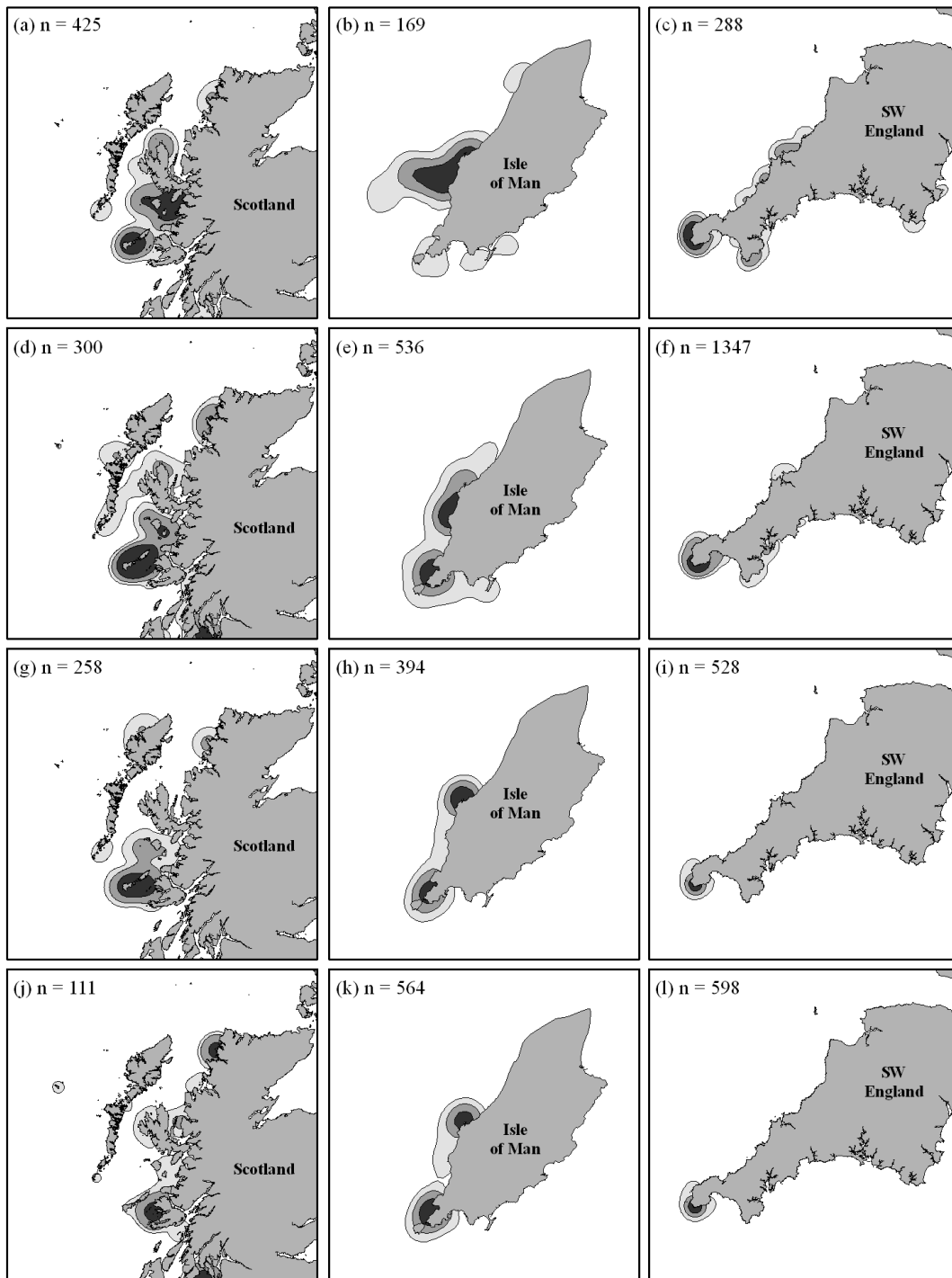


Fig. S2. *Cetorhinus maximus*. Kernels of annual basking shark sighting distributions (light grey 75%, mid-grey 50% and dark grey 25%) for (a, d, g, j) Scotland, (b, e, h, k) Isle of Man and (c, f, i, l) southwest England for a period where all regions had greater than 100 records for a contiguous time period 2005 to 2008. (a–c) 2005, (d–f) 2006, (g–i) 2007 and (j–l) 2008

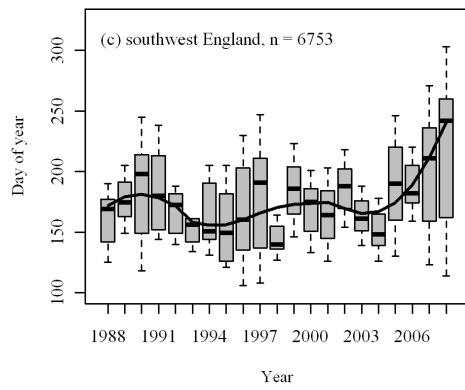
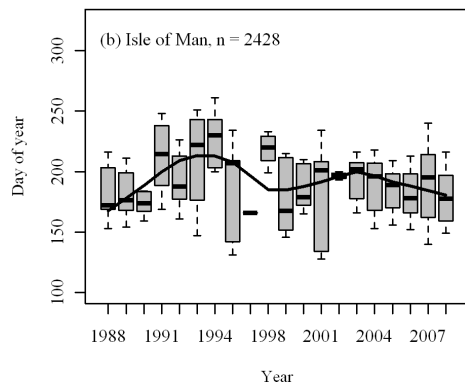
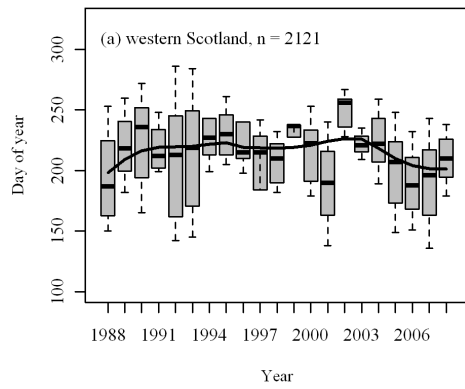


Fig. S3. *Cetorhinus maximus*. Annual distribution of dates of sightings (day of year) by region: (a) western Scotland, (b) Isle of Man, (c) southwest England

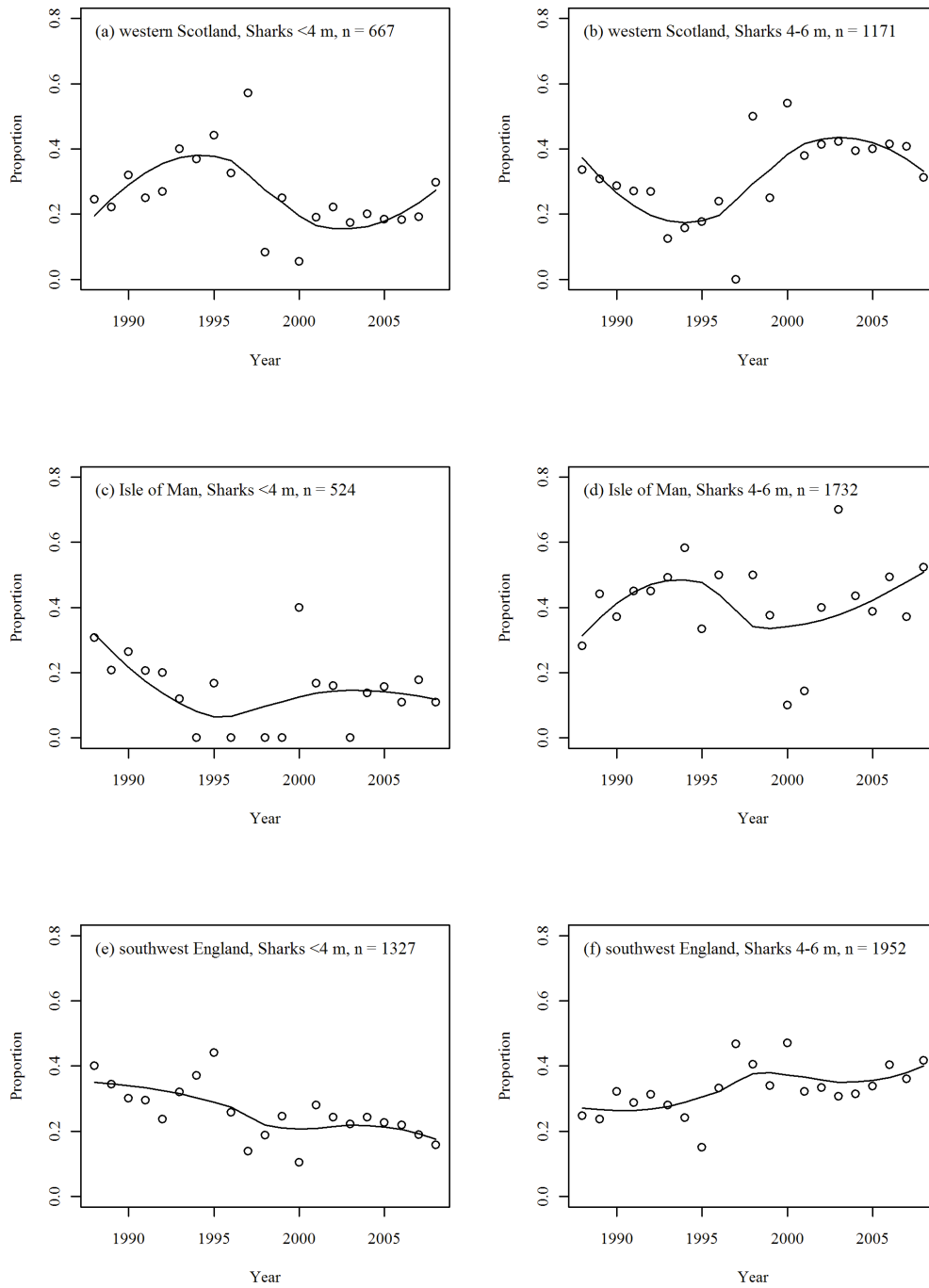


Fig. S4. *Cetorhinus maximus*. Regional body size trends through time: (a) western Scotland, sharks <4 m in length, (b) western Scotland, sharks 4–6 m, (c) Isle of Man, sharks <4 m, (d) Isle of Man, sharks 4–6 m, (e) southwest England, sharks <4 m, (f) southwest England, sharks 4–6 m