

The following supplement accompanies the article

Geographic variation in the foraging behaviour of South American fur seals

Alastair M. M. Baylis*, Megan Tierney, Rachael A. Orben, Iain J. Staniland, Paul Brickle

*Corresponding author: al_baylis@yahoo.com.au

Marine Ecology Progress Series 596: 233–245 (2018)

Table S1: Foraging trip metrics for nine adult female South American fur seals (*Arctocephalus australis*) breeding at the Falkland Islands.

PTT id	Duration (day)	Travel distance (km)	Max distance (km)	Foraging Trip	Colony	Start time	End time	Start from colony	Return to colony
148742	1.1	52	25	1	North Fur	5/22/2015 5:58	5/23/2015 9:25	TRUE	TRUE
148742	1.5	102	30	2	North Fur	5/24/2015 12:53	5/25/2015 23:49	TRUE	TRUE
148742	3.9	167	55	3	North Fur	5/26/2015 12:29	5/30/2015 8:59	TRUE	TRUE
148742	3.8	172	48	4	North Fur	5/31/2015 12:30	6/4/2015 8:19	TRUE	TRUE
148742	3.9	173	54	5	North Fur	6/5/2015 8:20	6/9/2015 5:47	TRUE	TRUE
148742	5.1	293	56	6	North Fur	6/11/2015 3:44	6/16/2015 7:03	TRUE	TRUE
148742	5.1	169	49	7	North Fur	6/18/2015 2:45	6/23/2015 4:47	TRUE	TRUE
148742	3.8	248	64	8	North Fur	6/24/2015 7:02	6/28/2015 2:05	TRUE	TRUE
148742	3.4	200	45	9	North Fur	6/29/2015 6:52	7/2/2015 17:11	TRUE	TRUE
148742	2.4	129	48	10	North Fur	7/4/2015 11:26	7/6/2015 21:57	TRUE	TRUE
148742	6.4	301	49	11	North Fur	7/7/2015 20:48	7/14/2015 6:48	TRUE	TRUE
148742	5.8	147	45	12	North Fur	7/15/2015 8:14	7/21/2015 3:15	TRUE	TRUE
148742	6.6	187	49	13	North Fur	7/22/2015 12:02	7/29/2015 1:42	TRUE	TRUE
148742	7.0	259	73	14	North Fur	7/30/2015 7:03	8/6/2015 7:31	TRUE	TRUE
148742	7.0	151	64	15	North Fur	8/7/2015 3:49	8/14/2015 3:02	TRUE	FALSE
148742	19.9	1082	378	16	North Fur	10/18/2015 8:55	11/7/2015 7:08	TRUE	TRUE

PTT id	Duration (day)	Travel distance (km)	Max distance (km)	Foraging Trip	Colony	Start time	End time	Start from colony	Return to colony
148742	11.3	1025	521	17	North Fur	11/11/2015 4:57	11/22/2015 12:09	TRUE	FALSE
148743	3.7	276	113	18	North Fur	5/28/2015 1:55	5/31/2015 19:46	TRUE	TRUE
148743	4.1	179	45	19	North Fur	6/2/2015 5:55	6/6/2015 8:21	TRUE	TRUE
148743	5.2	218	56	20	North Fur	6/7/2015 20:44	6/13/2015 1:33	TRUE	TRUE
148743	4.6	165	59	21	North Fur	6/14/2015 19:43	6/19/2015 9:00	TRUE	TRUE
148743	3.1	150	35	22	North Fur	6/21/2015 3:11	6/24/2015 6:45	TRUE	TRUE
148743	5.0	170	52	23	North Fur	6/25/2015 8:12	6/30/2015 7:50	TRUE	TRUE
148743	3.9	244	77	24	North Fur	7/1/2015 7:51	7/5/2015 5:23	TRUE	TRUE
148743	11.9	586	91	25	North Fur	7/6/2015 9:05	7/18/2015 7:39	TRUE	TRUE
148743	12.6	631	128	26	North Fur	7/19/2015 17:22	8/1/2015 7:31	TRUE	TRUE
148743	9.0	512	158	27	North Fur	8/2/2015 7:19	8/11/2015 8:08	TRUE	TRUE
148743	2.6	203	57	28	North Fur	8/12/2015 10:20	8/14/2015 23:33	TRUE	TRUE
148743	18.1	566	142	29	North Fur	8/15/2015 12:54	9/2/2015 16:08	TRUE	TRUE
148743	9.9	299	114	30	North Fur	9/4/2015 12:41	9/14/2015 9:14	TRUE	TRUE
148743	11.0	596	152	31	North Fur	9/16/2015 7:00	9/27/2015 7:39	TRUE	TRUE
148743	13.0	687	120	32	North Fur	9/29/2015 7:19	10/12/2015 8:04	TRUE	TRUE
148743	11.8	699	246	33	North Fur	10/13/2015 11:55	10/25/2015 7:43	TRUE	TRUE
148743	3.7	174	53	34	North Fur	10/26/2015 18:47	10/30/2015 11:19	TRUE	TRUE
148743	5.7	591	229	35	North Fur	10/31/2015 10:49	11/6/2015 4:16	TRUE	FALSE
148743	15.8	1385	444	36	North Fur	11/8/2015 12:55	11/24/2015 8:37	TRUE	TRUE
148745	3.3	145	48	37	North Fur	5/25/2015 23:16	5/29/2015 5:35	TRUE	TRUE
148745	5.1	191	50	38	North Fur	5/31/2015 8:39	6/5/2015 11:06	TRUE	TRUE
148745	6.0	265	72	39	North Fur	6/8/2015 16:57	6/14/2015 16:19	TRUE	TRUE
148745	7.8	288	53	40	North Fur	6/16/2015 12:54	6/24/2015 8:01	TRUE	FALSE
148745	2.9	159	49	41	North Fur	6/24/2015 12:28	6/27/2015 10:48	FALSE	TRUE
148745	3.8	176	47	42	North Fur	6/28/2015 7:16	7/2/2015 1:39	TRUE	TRUE
148745	2.9	181	64	43	North Fur	7/3/2015 11:55	7/6/2015 10:19	TRUE	TRUE
148745	8.0	299	64	44	North Fur	7/7/2015 12:19	7/15/2015 11:59	TRUE	TRUE
148745	4.4	199	89	45	North Fur	7/15/2015 21:45	7/20/2015 7:54	TRUE	TRUE

PTT id	Duration (day)	Travel distance (km)	Max distance (km)	Foraging Trip	Colony	Start time	End time	Start from colony	Return to colony
148745	10.1	281	62	46	North Fur	7/21/2015 9:09	7/31/2015 12:19	TRUE	TRUE
148745	3.0	206	85	47	North Fur	8/2/2015 9:36	8/5/2015 9:40	TRUE	FALSE
148745	2.0	111	76	48	North Fur	8/6/2015 7:27	8/8/2015 7:06	FALSE	TRUE
148746	13.8	687	224	49	Vol Rocks	6/5/2015 18:29	6/19/2015 12:36	TRUE	TRUE
148746	12.0	610	200	50	Vol Rocks	6/21/2015 11:55	7/3/2015 12:43	TRUE	TRUE
148746	14.7	739	227	51	Vol Rocks	7/5/2015 23:57	7/20/2015 16:50	TRUE	TRUE
148746	17.4	901	236	52	Vol Rocks	7/23/2015 0:15	8/9/2015 9:13	TRUE	TRUE
148746	18.0	844	230	53	Vol Rocks	8/12/2015 8:19	8/30/2015 7:26	TRUE	TRUE
148746	28.2	2517	940	54	Vol Rocks	9/2/2015 7:25	9/30/2015 12:00	TRUE	FALSE
148746	18.7	1684	704	55	Vol Rocks	10/3/2015 7:10	10/21/2015 22:55	FALSE	TRUE
148746	24.8	1827	431	56	Vol Rocks	10/26/2015 15:21	11/20/2015 11:06	TRUE	TRUE
148746	10.8	585	128	57	Vol Rocks	11/24/2015 12:20	12/5/2015 7:24	TRUE	TRUE
148748	2.1	143	44	58	North Fur	5/23/2015 0:39	5/25/2015 2:24	FALSE	TRUE
148748	3.7	165	56	59	North Fur	5/26/2015 16:22	5/30/2015 9:48	TRUE	TRUE
148748	2.5	141	51	60	North Fur	5/31/2015 16:20	6/3/2015 4:13	TRUE	TRUE
148748	2.8	152	51	61	North Fur	6/4/2015 10:32	6/7/2015 6:43	TRUE	TRUE
148748	2.2	146	57	62	North Fur	6/9/2015 4:59	6/11/2015 8:48	FALSE	TRUE
148748	4.1	189	52	63	North Fur	6/13/2015 4:07	6/17/2015 7:09	TRUE	TRUE
148748	3.7	222	51	64	North Fur	6/18/2015 9:04	6/22/2015 2:50	TRUE	TRUE
148748	2.9	157	46	65	North Fur	6/23/2015 9:01	6/26/2015 6:47	TRUE	TRUE
148748	6.8	398	74	66	North Fur	6/27/2015 11:26	7/4/2015 7:14	TRUE	TRUE
148748	8.5	568	157	67	North Fur	7/6/2015 8:45	7/14/2015 20:41	TRUE	TRUE
148748	5.3	696	169	68	North Fur	7/16/2015 22:45	7/22/2015 7:06	TRUE	TRUE
148748	4.5	268	72	69	North Fur	7/23/2015 7:31	7/27/2015 19:12	TRUE	TRUE
148748	6.2	495	141	70	North Fur	7/29/2015 2:51	8/4/2015 7:20	TRUE	TRUE
148748	1.6	211	116	71	North Fur	8/5/2015 8:20	8/6/2015 23:02	TRUE	FALSE
148748	6.0	124	58	72	North Fur	8/9/2015 7:17	8/15/2015 6:22	FALSE	FALSE
148748	3.9	761	507	73	North Fur	8/29/2015 8:47	9/2/2015 7:31	TRUE	FALSE
148748	3.2	156	51	74	North Fur	9/3/2015 7:18	9/6/2015 12:56	FALSE	FALSE

PTT id	Duration (day)	Travel distance (km)	Max distance (km)	Foraging Trip	Colony	Start time	End time	Start from colony	Return to colony
148748	14.9	1090	556	75	North Fur	9/7/2015 10:42	9/22/2015 7:34	FALSE	FALSE
148748	15.4	665	151	76	North Fur	9/24/2015 0:09	10/9/2015 9:02	FALSE	FALSE
148748	8.5	429	134	77	North Fur	10/11/2015 20:36	10/20/2015 8:03	FALSE	FALSE
148748	5.3	396	113	78	North Fur	10/22/2015 9:00	10/27/2015 15:46	FALSE	FALSE
148748	5.9	392	78	79	North Fur	10/29/2015 8:53	11/4/2015 7:40	FALSE	FALSE
148748	13.6	1159	726	80	North Fur	11/6/2015 8:53	11/19/2015 22:37	FALSE	FALSE
148748	2.2	122	43	81	North Fur	11/23/2015 7:13	11/25/2015 12:43	FALSE	TRUE
148748	1.5	103	48	82	North Fur	11/27/2015 2:06	11/28/2015 14:26	TRUE	TRUE
148748	3.3	118	44	83	North Fur	11/29/2015 0:59	12/2/2015 7:02	TRUE	TRUE
148749	7.2	339	111	84	Vol Rocks	6/6/2015 12:03	6/13/2015 17:01	TRUE	TRUE
148749	6.2	343	112	85	Vol Rocks	6/15/2015 7:13	6/21/2015 13:10	TRUE	TRUE
148749	8.6	636	182	86	Vol Rocks	6/23/2015 5:00	7/1/2015 18:33	TRUE	TRUE
148749	7.9	440	106	87	Vol Rocks	7/3/2015 12:43	7/11/2015 11:12	TRUE	TRUE
148749	11.0	560	107	88	Vol Rocks	7/12/2015 12:14	7/23/2015 12:26	TRUE	TRUE
148749	11.1	662	232	89	Vol Rocks	7/25/2015 7:24	8/5/2015 9:33	TRUE	TRUE
148749	31.0	2413	674	90	Vol Rocks	8/7/2015 7:08	9/7/2015 8:10	TRUE	FALSE
148749	17.4	1498	608	91	Vol Rocks	9/8/2015 21:57	9/26/2015 8:02	FALSE	FALSE
148749	30.3	2304	616	92	Vol Rocks	9/28/2015 1:27	10/28/2015 8:26	FALSE	TRUE
148749	21.6	1233	413	93	Vol Rocks	11/1/2015 21:40	11/23/2015 12:19	TRUE	TRUE
148749	2.1	205	95	94	Vol Rocks	11/26/2015 23:22	11/29/2015 1:42	TRUE	TRUE
148749	9.0	423	128	95	Vol Rocks	12/1/2015 12:49	12/10/2015 12:02	TRUE	TRUE
148752	2.6	266	114	96	North Fur	5/27/2015 4:16	5/29/2015 19:26	TRUE	TRUE
148752	3.2	233	88	97	North Fur	5/31/2015 7:33	6/3/2015 12:16	TRUE	TRUE
148752	2.8	182	89	98	North Fur	6/4/2015 22:46	6/7/2015 17:26	TRUE	TRUE
148752	2.5	235	106	99	North Fur	6/9/2015 3:05	6/11/2015 15:08	TRUE	TRUE
148752	2.6	182	47	100	North Fur	6/12/2015 20:14	6/15/2015 9:48	TRUE	TRUE
148752	2.5	97	37	101	North Fur	6/15/2015 22:45	6/18/2015 11:53	TRUE	TRUE
148752	2.0	117	51	102	North Fur	6/19/2015 12:36	6/21/2015 12:06	TRUE	TRUE
148752	0.8	31	15	103	North Fur	6/22/2015 19:27	6/23/2015 13:49	TRUE	TRUE

PTT id	Duration (day)	Travel distance (km)	Max distance (km)	Foraging Trip	Colony	Start time	End time	Start from colony	Return to colony
148752	1.5	39	15	104	North Fur	6/23/2015 20:00	6/25/2015 8:16	TRUE	TRUE
148752	2.1	41	20	105	North Fur	6/26/2015 7:16	6/28/2015 9:56	TRUE	TRUE
148752	1.3	33	16	106	North Fur	6/29/2015 4:28	6/30/2015 12:08	TRUE	TRUE
148752	2.0	66	31	107	North Fur	7/1/2015 7:33	7/3/2015 8:03	FALSE	TRUE
148752	1.1	37	18	108	North Fur	7/4/2015 7:00	7/5/2015 9:03	FALSE	TRUE
148752	3.1	82	29	109	North Fur	7/6/2015 8:42	7/9/2015 10:05	TRUE	TRUE
148752	1.9	41	20	110	North Fur	7/10/2015 11:56	7/12/2015 10:35	TRUE	TRUE
148752	2.7	141	52	111	North Fur	7/13/2015 9:26	7/16/2015 2:52	TRUE	TRUE
148752	2.2	45	16	112	North Fur	7/16/2015 11:51	7/18/2015 16:19	TRUE	TRUE
148752	4.9	428	150	113	North Fur	7/19/2015 10:50	7/24/2015 7:38	TRUE	TRUE
148752	2.7	41	25	114	North Fur	7/25/2015 12:47	7/28/2015 4:35	TRUE	FALSE
148752	1.5	51	21	115	North Fur	7/28/2015 20:05	7/30/2015 8:08	FALSE	TRUE
148752	5.8	336	100	116	North Fur	7/31/2015 12:21	8/6/2015 6:26	TRUE	TRUE
148752	1.1	24	15	117	North Fur	8/7/2015 8:44	8/8/2015 12:09	TRUE	FALSE
148752	4.4	109	47	118	North Fur	8/9/2015 9:34	8/13/2015 18:27	TRUE	TRUE
148752	1.7	62	46	119	North Fur	8/14/2015 12:34	8/16/2015 5:11	TRUE	FALSE
148752	1.3	31	13	120	North Fur	8/20/2015 10:33	8/21/2015 17:33	FALSE	FALSE
148752	1.3	15	7	121	North Fur	8/22/2015 4:36	8/23/2015 11:55	FALSE	FALSE
148752	1.4	56	39	122	North Fur	8/23/2015 20:05	8/25/2015 5:14	FALSE	TRUE
148752	2.6	124	59	123	North Fur	8/26/2015 10:18	8/29/2015 1:26	TRUE	FALSE
148752	0.7	18	7	124	North Fur	8/29/2015 20:08	8/30/2015 11:59	FALSE	FALSE
148752	0.7	15	6	125	North Fur	8/30/2015 20:08	8/31/2015 12:23	FALSE	FALSE
148752	1.5	62	43	126	North Fur	9/2/2015 8:08	9/3/2015 19:47	FALSE	TRUE
148752	1.6	171	58	127	North Fur	9/4/2015 20:52	9/6/2015 10:28	TRUE	FALSE
148753	10.0	721	143	128	Vol Rocks	6/6/2015 21:27	6/16/2015 20:46	TRUE	TRUE
148753	11.0	667	114	129	Vol Rocks	6/18/2015 20:57	6/29/2015 20:26	TRUE	TRUE
148753	17.0	1444	424	130	Vol Rocks	7/1/2015 12:41	7/18/2015 12:35	TRUE	TRUE
148753	12.1	649	115	131	Vol Rocks	7/20/2015 4:40	8/1/2015 7:13	TRUE	TRUE
148753	14.2	914	227	132	Vol Rocks	8/3/2015 3:54	8/17/2015 7:57	TRUE	TRUE

PTT id	Duration (day)	Travel distance (km)	Max distance (km)	Foraging Trip	Colony	Start time	End time	Start from colony	Return to colony
148753	12.2	876	271	133	Vol Rocks	8/19/2015 3:00	8/31/2015 7:09	TRUE	TRUE
148753	13.3	1035	259	134	Vol Rocks	9/2/2015 11:41	9/15/2015 18:36	TRUE	TRUE
148753	18.4	1411	499	135	Vol Rocks	9/18/2015 6:35	10/6/2015 16:59	TRUE	TRUE
148753	18.6	1161	345	136	Vol Rocks	10/8/2015 12:38	10/27/2015 2:56	TRUE	TRUE
148753	12.4	943	266	137	Vol Rocks	10/28/2015 12:24	11/9/2015 22:29	TRUE	TRUE
148753	15.8	1023	319	138	Vol Rocks	11/11/2015 12:34	11/27/2015 7:22	TRUE	TRUE
148753	9.5	513	128	139	Vol Rocks	11/28/2015 19:12	12/8/2015 7:20	TRUE	TRUE
148753	5.6	434	123	140	Vol Rocks	12/10/2015 11:48	12/16/2015 2:23	TRUE	TRUE
148753	9.4	511	146	141	Vol Rocks	12/19/2015 0:30	12/28/2015 10:22	TRUE	TRUE
148757	7.8	451	154	142	Vol Rocks	6/6/2015 12:05	6/14/2015 7:44	TRUE	TRUE
148757	12.4	869	220	143	Vol Rocks	6/15/2015 21:34	6/28/2015 7:17	TRUE	TRUE
148757	17.0	1370	467	144	Vol Rocks	7/1/2015 7:20	7/18/2015 7:02	TRUE	TRUE
148757	19.1	1536	481	145	Vol Rocks	7/21/2015 5:09	8/9/2015 7:35	TRUE	TRUE
148757	25.5	1691	479	146	Vol Rocks	8/13/2015 0:01	9/7/2015 12:37	TRUE	TRUE
148757	22.9	1630	469	147	Vol Rocks	9/11/2015 11:55	10/4/2015 8:35	TRUE	TRUE
148752	2.4	136	58	148	North Fur	9/14/2015 10:42	9/16/2015 20:48	TRUE	FALSE
148752	6.2	230	61	149	North Fur	10/13/2015 7:44	10/19/2015 12:03	FALSE	FALSE
148749	2.4	406	98	150	Vol Rocks	12/12/2015 12:49	12/18/2015 14:00	TRUE	FALSE

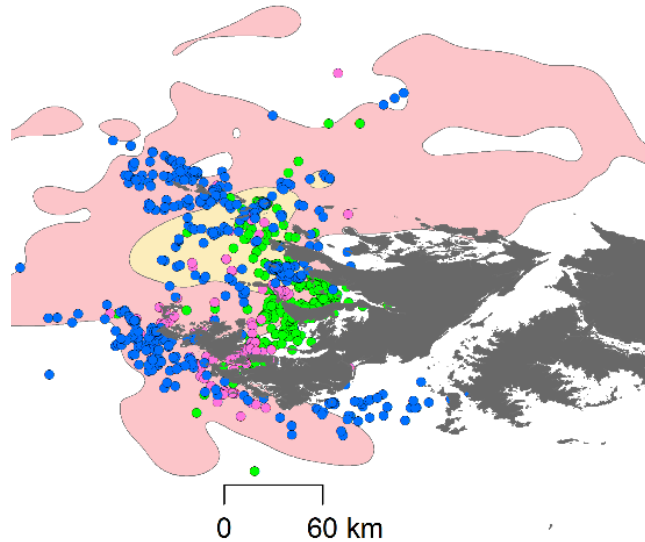


Fig S1: For three adult female South American Fur Island that bred at North Fur Island, it was difficult to define foraging trips over select periods. When compared with utilization distributions calculated for foraging trips, the utilization distribution for all trips (yellow = 50 %, pink = 90 %) were broadly representative. Green = PTT 148742 (15 Aug 2015 – 16 Oct 2015). Pink = PTT 148748 (16 Aug 2015 – 29 Aug 2015). Blue = PTT 148752 (06 Sept 2015 – 15 Nov 2015).

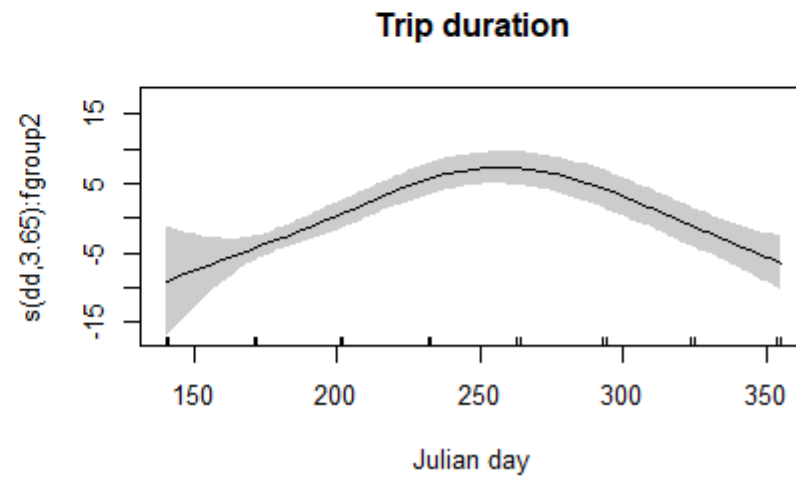
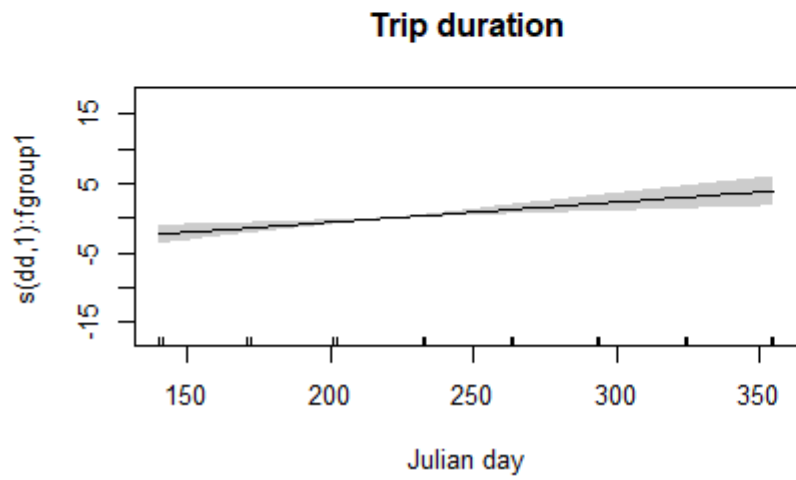
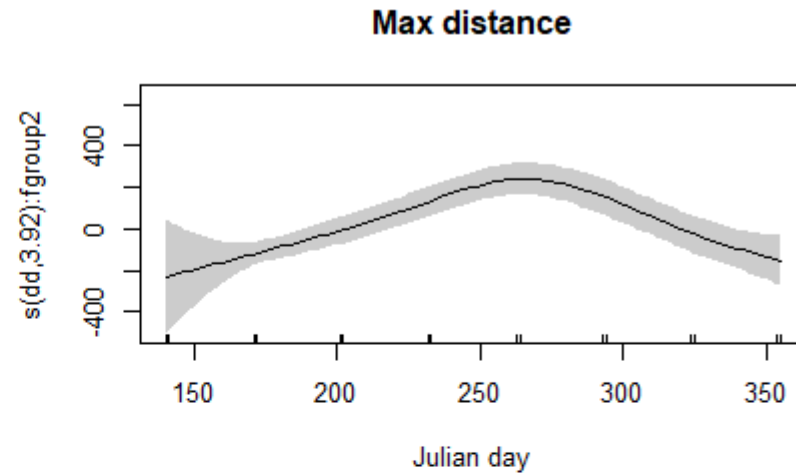
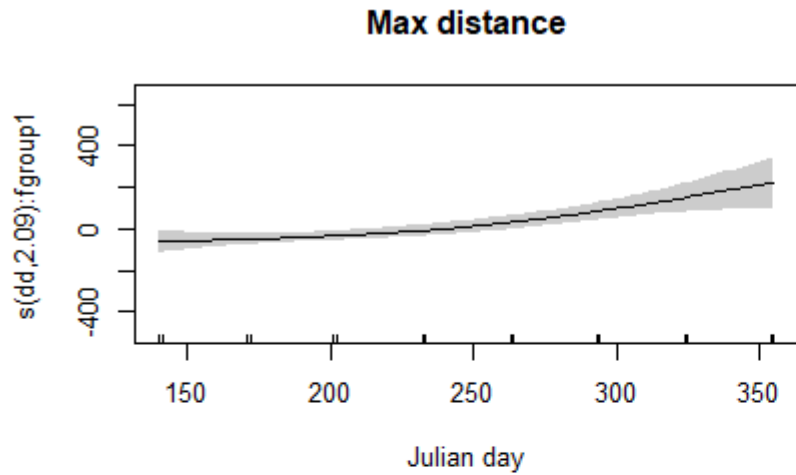


Fig S2: GAMM smoothers and the relationship between maximum distance and foraging trip duration over time. fgroup1 = North Fur, fgroup2 = Volunteer Rocks.



Fig S3(A): The $\delta^{13}\text{C}$ values of sequential vibrissae segments from adult female South American fur seals that bred at the Falkland Islands. The first sample is closest to the root of the vibrissae.



Fig S3(B): The $\delta^{13}\text{N}$ values of sequential vibrissae segments from adult female South American fur seals that bred at the Falkland Islands. The first sample is closest to the root of the vibrissae.