

Ecological vulnerability of two sea turtle species in the Gulf of Mexico: an integrated spatial approach

Eduardo Cuevas, María de los Ángeles Liceaga-Correa*, Abigail Uribe-Martínez

*Corresponding author: : maria.liceaga@cinvestav.mx

Endangered Species Research 40: 337–356 (2019)

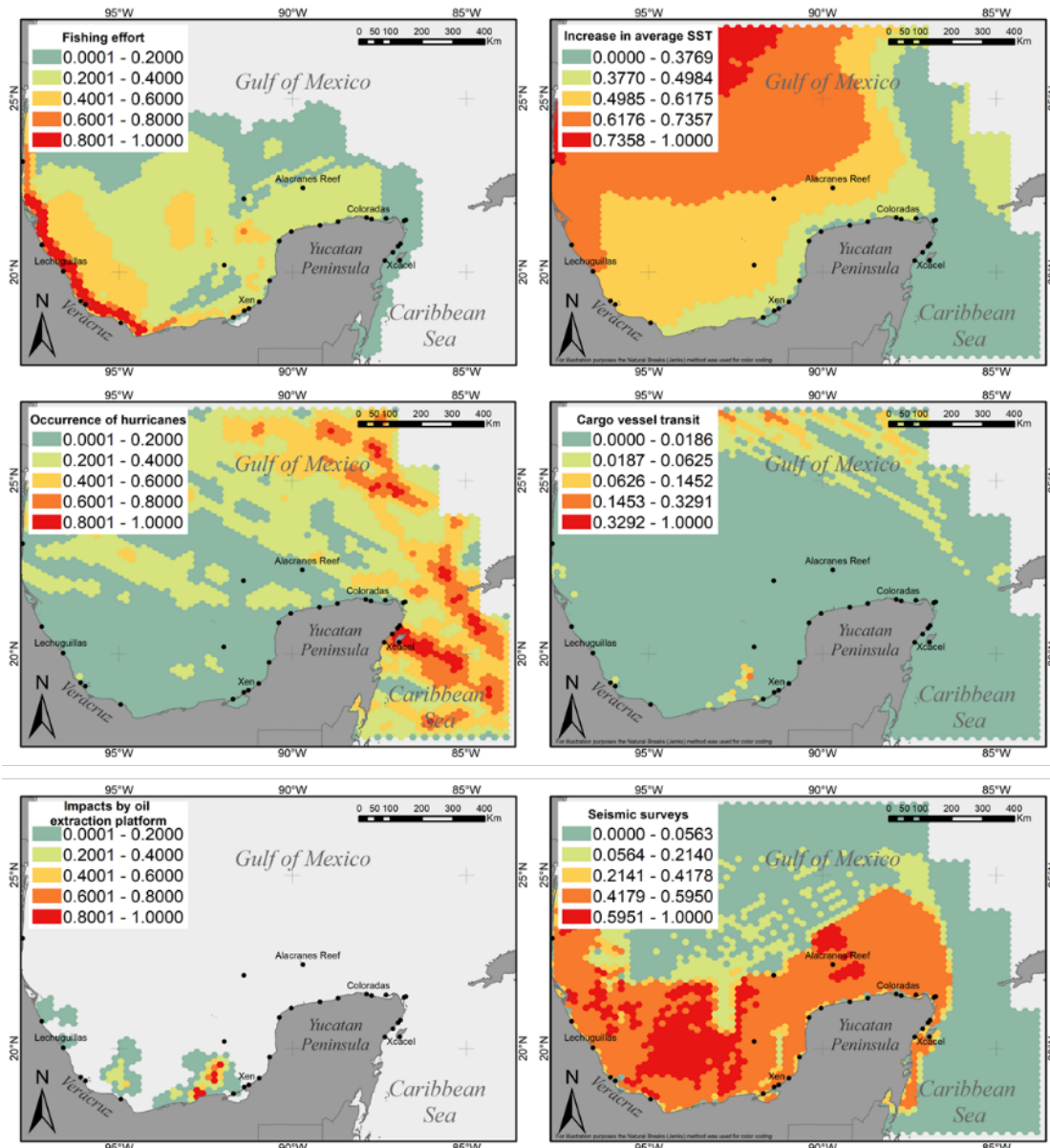


Fig. S1. Spatial configuration of the six threats for sea turtles considered for this ecological vulnerability analysis in the Gulf of Mexico.

Table S1. List of natural protected areas and their official category that were included in the ecological vulnerability analysis as an indicator of stability coefficient.

Name	Category	Location basin
Rancho Nuevo	Sanctuary	West Gulf of Mexico
Reef System Lobos-Tuxpan	Flora and Fauna Protection Area	West Gulf of Mexico
Veracruz Reef System	National Park	South Gulf of Mexico
Laguna de Términos	Flora and Fauna Protection Area	Southeast Gulf of Mexico
Los Petenes	Biosphere Reserve	Yucatan Peninsula
Celestun	Biosphere Reserve	Yucatan Peninsula
Alacranes Reef	National Park	Yucatan Peninsula
Rio Lagartos	Sanctuary	Yucatan Peninsula
Yum Balam	Flora and Fauna Protection Area	Yucatan Peninsula
Whale shark	Biosphere Reserve	Yucatan Peninsula
Contoy Island	National Park	Yucatan Peninsula
Isla Mujeres, Nizuc, Cancun	National Park	Yucatan Peninsula
Puerto Morelos Reef	National Park	Yucatan Peninsula
Northern and Eastern Cozumel	Flora and Fauna Protection Area	Yucatan Peninsula
Cozumel Reefs	National Park	Yucatan Peninsula
Sian Ka'an Reefs	Biosphere Reserve	Yucatan Peninsula
Xkalak Reef	National Park	Yucatan Peninsula
Chinchorro Reef	Biosphere Reserve	Yucatan Peninsula
Mexican Caribbean	Biosphere Reserve	Yucatan Peninsula

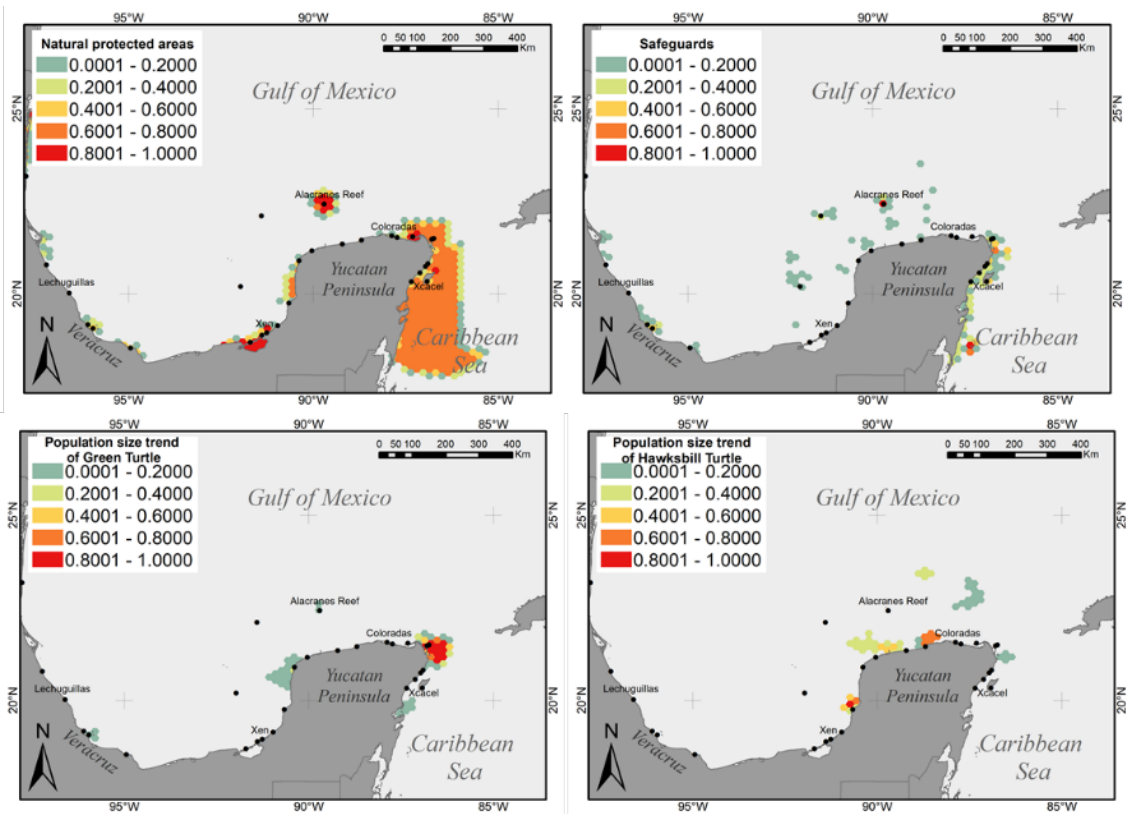


Fig. S2. Spatial distribution of Stability coefficient indicators for evaluating ecological vulnerability of green and hawksbill turtles in the Gulf of Mexico.