

Erratum

The North Atlantic Oscillation influence on Europe: climate impacts and associated physical mechanisms

Ricardo M. Trigo, Timothy J. Osborn, João M. Corte-Real

Climate Research 20:9–17, 2002

An error was made when computing composites of maximum temperature (Tmax) anomalies for winters with high and low NAO index values (Fig. 3). The revised figure shows that the spatial extent of Tmax anomalies does not present the reported large asymmetries between the high and low NAO index composites. The differences in magnitude and spatial extension between Tmax and Tmin anomalies remain, though reduced in size, and are explained by the anomalous cloud cover (compare revised Fig. 3 with Fig. 4 in Trigo et al. 2002). The authors regret any inconvenience that this error may have caused.

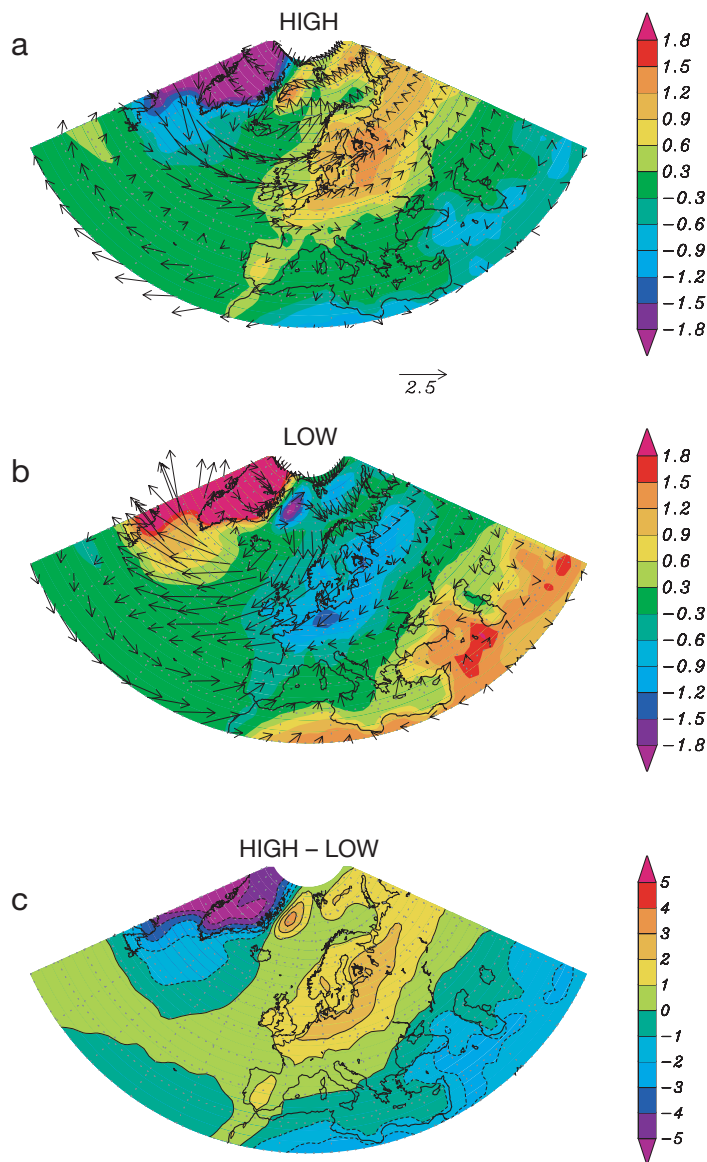


Fig. 3 (revised). Tmax anomaly fields (°C) for winter months with (a) high NAO index > 1.0, (b) low NAO index < -1.0, and (c) their difference. Vectors of the anomaly 10 m wind field (m s⁻¹) for months with (a) high, and (b) low NAO index are also represented