

## Erratum

### Decadal changes in heat-related human mortality in the eastern United States

Robert E. Davis, Paul C. Knappenberger, Wendy M. Novicoff, Patrick J. Michaels

*Climate Research* 22:175–184, 2002

Fig. 4 on page 180 was printed in black and white instead of colour. The correct figure is reproduced here along with its caption.

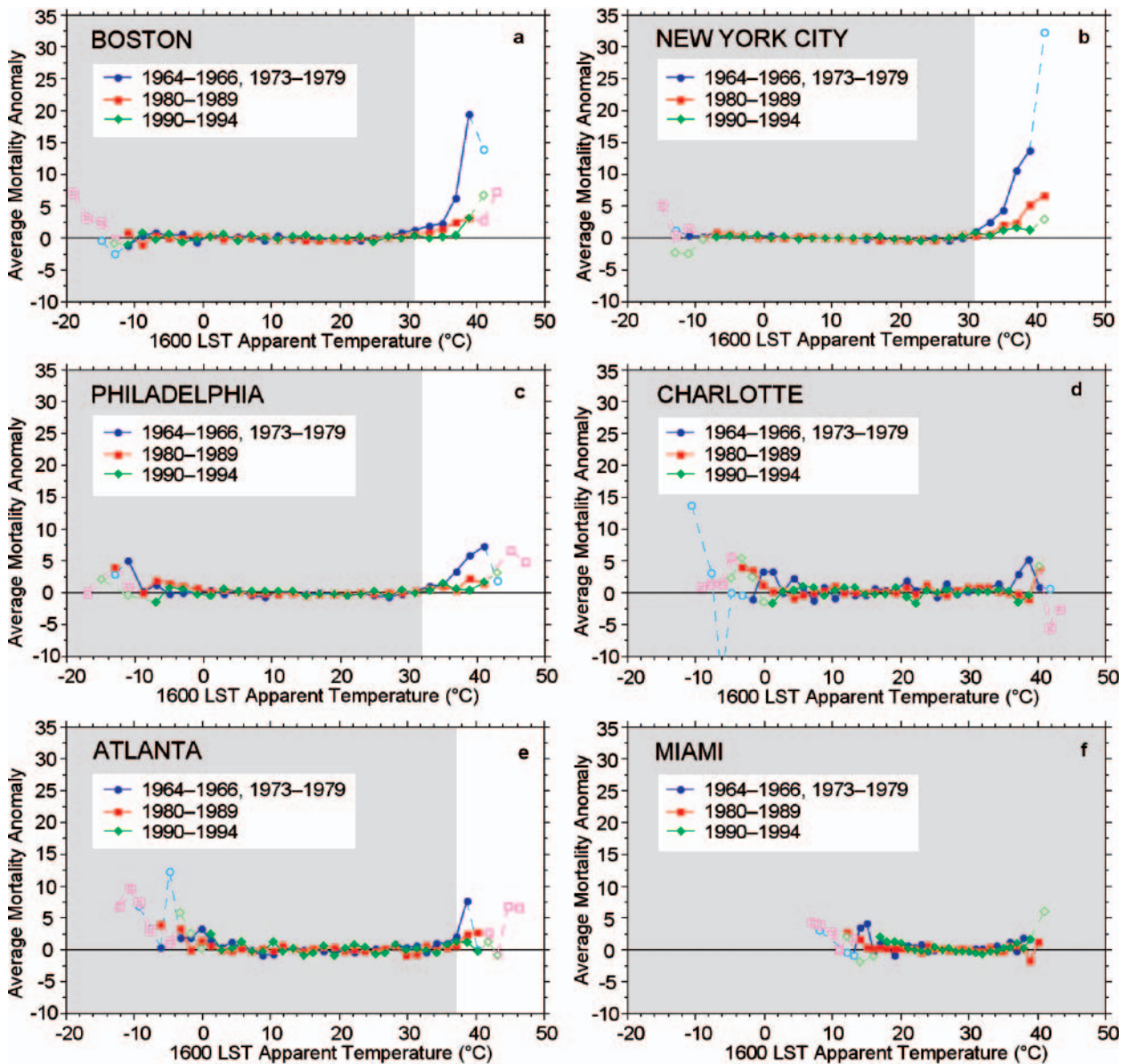


Fig. 4. Mean standardized and de-seasoned total mortality, by 'decade', per AT class interval for (a) Boston, (b) New York City, (c) Philadelphia, (d) Charlotte, (e) Atlanta, and (f) Miami. Values above the threshold AT are plotted in the white region. AT class interval widths are calculated separately for each MSA. Samples with less than 5 observations in a class interval are plotted with open symbols in a lighter shade and connected using dashed lines