

Ectoparasitism by a dinoflagellate (Dinoflagellata: Oodiniidae) on 5 ctenophores (Ctenophora) and a hydromedusa (Cnidaria)

Claudia E. Mills¹, Norman McLean^{1,2}

¹ Friday Harbor Laboratories, University of Washington, 620 University Road, Friday Harbor, Washington 98250, USA

² Department of Biology, San Diego State University, San Diego, California 92182-0057, USA

ABSTRACT: *Oodinium* sp., an ectoparasitic oodiniid dinoflagellate that closely resembles *Oodinium jordani* McLean & Nielsen, 1989 described from *Sagitta elegans* Verrill, 1873 (Phylum Chaetognatha), has been seen to parasitize *Beroe abyssicola* Mortensen, 1927, *Bolinopsis ?infundibulum* (O. F. Müller, 1776), *Euplokamis dunlapae* Mills, 1987, *Dryodora glandiformis* (Mertens, 1833), and *Pleurobrachia bachei* A. Agassiz, 1860, which represent 3 orders of the phylum Ctenophora, and the hydromedusa *Euphysa* sp. (phylum Cnidaria) in marine waters of the San Juan Archipelago, Washington State, USA. Up to several hundred trophozoites may be found on a single ctenophore, although most ctenophore hosts carry less than 50; the hydromedusa never carried more than 4. The parasites occurred on their ctenophore and medusan hosts from late October through early April, and not in the warmer months. These are the first reported instances of parasitism by a dinoflagellate on the Ctenophora, and by an *Oodinium* on the Cnidaria.

INTRODUCTION

A recent study (McLean & Nielsen 1989) described *Oodinium jordani*, a new species of oodiniid dinoflagellate ectoparasitic on a member of the phylum Chaetognatha from northwest Washington State, USA. The genus *Oodinium* was previously known only from European waters. We have observed an oodiniid similar to *O. jordani* ectoparasitic on the ctenophores *Beroe abyssicola* (order Beroida), *Bolinopsis ?infundibulum* (order Lobata), *Euplokamis dunlapae* (order Cydippida), *Dryodora glandiformis* (order Cydippida), and *Pleurobrachia bachei* (order Cydippida) and on the jellyfish *Euphysa* sp. (phylum Cnidaria, order Hydrozoa) in the geographical region from which *O. jordani* was collected. A number of other species of ctenophores, medusae, and siphonophores were also examined, but did not carry *Oodinium* trophozoites.

MATERIALS AND METHODS

Specimens of *Beroe abyssicola* Mortensen, 1927, *Bolinopsis ?infundibulum* (O. F. Müller, 1776), *Euplo-*

kamis dunlapae Mills, 1987, *Dryodora glandiformis* (Mertens, 1833), *Pleurobrachia bachei* A. Agassiz, 1860, *Euphysa* sp., and (for comparison) *Sagitta elegans* Verrill, 1873, were hand-collected in beakers from the floating docks of the Friday Harbor Laboratories, San Juan Archipelago, Washington, USA (48° 32' N lat., 123° 00' W. long.), and maintained in circulating seawater (ca 10°C) at the Laboratories. Initial observations of attached trophozoites were made on living specimens; growth measurements of attached trophozoites were made using a dissecting microscope. The seasonality of the attached trophozoites was determined by collecting year-round from November 1989 through November 1990.

For light microscopy, parasites were fixed in 3% glutaraldehyde (Ladd) in 0.1 M phosphate buffer (pH 7.3) with 0.35 M sucrose (20°C, 1 h), rinsed briefly in buffer with sucrose, postfixed on ice in 1% osmium tetroxide in 0.1 M phosphate buffer (pH 7.3) with 0.35 M sucrose (1 h), dehydrated in an acetone series and embedded in Spurr's medium (Ladd). Sections 1 µm thick were stained in 1% methylene blue in 1% borax and 1% azure II, and examined in a light microscope.

RESULTS

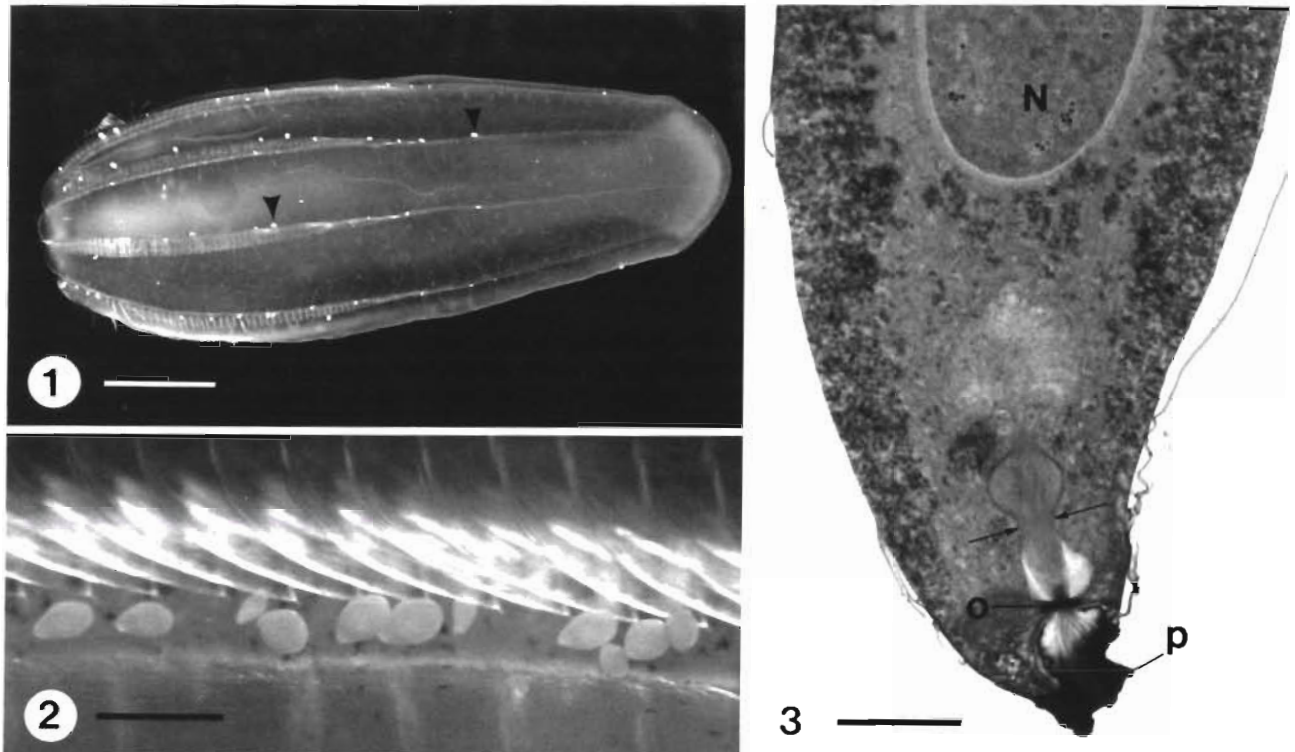
Morphology

The trophozoites of the oodiniid that we collected on ctenophores (Figs. 1 & 2) and on the hydromedusa were oval, with lengths of 100 to 350 μm , and widths of 35 to 250 μm , the larger specimens becoming increasingly globose. These parasites ranged in color from white to yellow to yellowish brown in sunlight. The large, oval nucleus was situated centrally; beneath it, the peduncular bulb was divided into a proximal and a distal portion by a transverse constriction (Fig. 3). A prominent dense ring (Fig. 3) marked the boundary between the peduncular bulb and the proximal region of the longitudinally ridged attachment organelle or peduncle, which was always transparent and colorless, and which penetrated beneath the epidermal cells of the host. Our qualitative light microscopic observations indicated that the ridges on some of the ctenophoral parasites rose less abruptly from the peduncular surface, and did not extend so far from the surface, as did the ridges of *Oodinium jordani*; however a nearly complete continuum from broad low ridges to abrupt tall ridges was seen in sections of the ctenophore-borne oodiniid. In other aspects, the morphology of *Oodinium*

sp. trophozoites reported here was indistinguishable from *O. jordani* (see McLean & Nielsen 1989).

Ecology

The trophozoites of the parasite were attached to the epithelium of the hosts. On all species of ctenophore, nearly all of the parasites were attached along the length of the comb rows (Fig. 1) and, in *Beroe abyssicola*, also on the aboral papillae. A small percentage of trophozoites were attached on the ciliated grooves leading to the statocyst, on the body surface between comb rows, or, on *Bolinopsis ?infundibulum*, along the subpharyngeal canals that continue up the lobes beyond the comb rows and then snake around the inside surface of the lobes. Along the comb rows of all ctenophores, most trophozoites were attached to the epithelium within 25 μm of the sides of the comb rows (Figs. 1 & 2), but some had attached within the comb rows between adjacent comb plates. Parasites along the comb rows were agitated vigorously by the beating of the locomotory cilia. In most ctenophores, entire comb rows and the aboral papillae were withdrawn upon stimulation with a probe, and covered by adjacent tissue. Such a protective posture removed the



Figs. 1 to 3. *Oodinium* sp. parasitic on *Beroe abyssicola*. Fig. 1. *B. abyssicola* with about 50 visible oodiniids (2 indicated by arrowheads). Scale bar = 5 mm. Fig. 2. *B. abyssicola*. Portion of comb row with 11 oodiniids. Scale bar = 500 μm . Fig. 3. *Oodinium* sp. Portion of parasite detached from *B. abyssicola*. n: nucleus; arrows: transverse constriction that divides peduncular bulb into proximal portion (above) and distal portion (below); o: dense ring; p: proximal region of peduncle. Scale bar = 25 μm

comb rows, statocyst, and the aboral papillae, together with any attached parasites, from potential harm. All trophozoites on the hydromedusa *Euphysa* sp. were attached to the subumbrellar surface – on the radial canals or ring canal, on the epithelium between canals, on the manubrium, or on the inner surface of the velum.

Distribution

Information on the incidence of *Oodinium* sp. trophozoites in 1989–1990 is summarized in Table 1. (*Oodinium jordani* was initially seen on *Sagitta elegans* at Friday Harbor in August 1988.) The oodiniid was present on ctenophores as early as December 1987 (recognized later in photographs), but it was late November 1989 before we realized that large numbers of ctenophores were carrying it. Of about 50 *Beroe abyssicola* examined at that time, most or all were infected. All 10 specimens of the sympatric lobate ctenophore *Bolinopsis ?infundibulum* collected at the same time were also infected. *Oodinium* sp. continued to be present in approximately the same abundance through March 1990 and was additionally collected in small numbers on the ctenophores *Euplokamis dunlapae*, *Dryodora glandiformis*, and *Pleurobrachia bachei*, and on the hydromedusa *Euphysa* sp. in the winter and early spring (the latter was present January to mid-May, but was not examined for parasites until March). During this period, there was no correlation between the size of a host and the number of attached dinoflagellates (e.g. *B. abyssicola* examined ranged from 8 to 52 mm in length, yet all sizes appeared to be equally vulnerable as hosts). The number of parasites on each ctenophore varied from one to several hundred. The most densely infected ctenophore was a 25 mm long *B. abyssicola* that carried ca 500 oodiniids, with one comb row (of which there are 8) bearing ca 100. The greatest number of parasites seen attached to the aboral papillae of *B. abyssicola* was 12. The trophozoites on a single host varied greatly in size.

Late March–April marked the beginning of the spring zooplankton bloom, in which large numbers of rapidly-growing juvenile ctenophores and medusae appeared. At the same time, incidence of *Oodinium* sp. decreased markedly, although it continued to occur on the same host species in small numbers through mid-April. By late April, *Oodinium* sp. trophozoites were virtually absent from the hosts and, with a single exception in June, no trophozoites were seen from late April until the last week in October 1990. *Oodinium* sp. were present in fair numbers on ctenophores by early November, after which extensive freshwater runoff affected surface waters, making ctenophores scarce for the rest of the year.

Trophozoites of *Oodinium jordani* were seen on *Sagitta elegans* in 1990 from January through mid-April; they were then seen again from mid-May through June 1990 during a period when trophozoites of *Oodinium* sp. were not seen either on ctenophores or medusae. *O. jordani* was also seen on *S. elegans* in August 1988 and January and April 1989.

Growth rate of trophozoites

It was very difficult to follow growth of individual trophozoites for more than 5 d because, in the laboratory, trophozoites often dropped from their host while still less than 300 μm long. It is not known whether this is the result of laboratory conditions and handling, or if it is normal. Based on measurements from more than 25 trophozoites, we believe that it takes ca 20 d at 10 °C for a trophozoite of *Oodinium* sp. living on *Beroe abyssicola* to grow from first visible size of about 35 μm long to the average maximum size of about 350 μm in length and 200 μm in width. As with all members of the Oodiniidae, *Oodinium* sp. trophozoites do not begin to sporulate until they have dropped from the host.

DISCUSSION

This is the first instance of parasitism by a dinoflagellate on a member of the phylum Ctenophora (Cachon & Cachon 1987). It is also the first reported occurrence of an *Oodinium* on the phylum Cnidaria. [The very dissimilar genus *Protoodinium* (Family Protoodiniidae) is the only other parasitic dinoflagellate described from a medusa – it also occurs on the manubrium, subumbrella, and velum of its host medusae (Cachon & Cachon 1971, Lauckner 1980).] The present case is particularly unusual since host specificity is common among parasitic dinoflagellates, and the 6 parasitized species reported here represent 4 orders from 2 phyla.

The waters in Friday Harbor are strongly mixed by tidal currents and exhibit little or no vertical stratification. It is questionable whether any of the macroplankton collected in Friday Harbor can be considered resident because of the extreme tidal exchange and water movement. In nearby inlets that are not so strongly mixed, vertical distribution of the plankton is highly stratified, and under these conditions, the hosts of *Oodinium* sp. do not typically occur in surface waters (Mackie & Mills 1983, Mackie 1985, Mills unpubl.). *Beroe abyssicola* usually occurs below 200 m, large *Bolinopsis ?infundibulum* below 150 m, *Euplokamis dunlapae* below 100 m, *Euphysa* sp. below 100 m, and *Sagitta elegans* below 75 m. *Pleurobrachia bachei*, a common ctenophore that is rarely infected, usually

Table 1 *Oodinium* sp. Incidence of trophozoites on ctenophores and hydromedusae in Friday Harbor, Washington. Hosts are not listed for months in which they were not present

Host species Date collected	No. collected	% Infected	<i>Oodinium</i> per infected host		
			n (host)	Mean	Range
PHYLUM CTENOPHORA					
ORDER BEROIDA					
Family Beroidae					
<i>Beroe abyssicola</i>					
Nov 89	~ 50	high	?	?	?
Dec 89	30	97	29	28	2-121
Jan 90	14	79	11	10	2-28
Feb 90	27	96	26	13	3-47
Mar 90	51	82	42	16	1-117
Apr 90	27	7	2	5	1-9
May 90	11	0	0	0	0
Jun 90	58	2	1	2	2
Jul 90	2	0	0	0	0
Oct 90	1	100	1	28	28
ORDER LOBATA					
Family Bolinopsidae					
<i>Bolinopsis ?infundibulum</i> ≥ 20 mm long					
Nov 89	10	100	10	?	?
Dec 89	1	100	1	2	2
Jan 90	1	100	1	17	17
Feb 90	2	100	2	8	2-15
Mar 90	8	37	3	30	1-76
Apr 90	25	0	0	0	0
May 90	10	0	0	0	0
Jun 90	7	0	0	0	0
Jul 90	2	0	0	0	0
Aug 90	5	0	0	0	0
Oct 90	6	33	2	8	5-12
Nov 90	15	67	10	15	1-105
<i>Bolinopsis ?infundibulum</i> < 20 mm long					
Mar 90	51	14	7	2	1-3
Apr 90	79	1	1	1	1
May 90	15	0	0	0	0
Jun 90	4	0	0	0	0
Aug 90	1	0	0	0	0
Oct 90	4	0	0	0	0
Nov 90	8	63	5	1	1-2
ORDER CYDIPPIDA					
Family Euplokamidae					
<i>Euplokamis dunlapae</i>					
Feb 90	1	0	0	0	0
Mar 90	6	100	6	4	1-9
Apr 90	8	0	0	0	0
May 90	4	0	0	0	0
Jun 90	2	0	0	0	0
Family Haeckeliidae					
<i>Dryodora glandiformis</i>					
Jan 90	7	14	1	2	2
Feb 90	3	33	1	1	1
Mar 90	10	20	2	3	1-5
Apr 90	4	0	0	0	0
May 90	2	0	0	0	0

Table 1 (continued)

Host species Date collected	No. collected	% Infected	<i>Oodinium</i> per infected host		
			n (host)	Mean	Range
Family Pleurobrachiidae					
<i>Pleurobrachia bachei</i>					
Feb 90	1	0	0	0	0
Mar 90	109	1	1	1	1
Apr 90	60	0	0	0	0
May 90	72	0	0	0	0
Jun 90	61	0	0	0	0
Jul 90	26	0	0	0	0
Aug 90	33	0	0	0	0
Sep 90	22	0	0	0	0
Oct 90	7	0	0	0	0
Nov 90	18	0	0	0	0
PHYLUM CNIDARIA					
ORDER HYDROZOA					
Family Euphysidae					
<i>Euphysa</i> sp.					
Mar 90	13	54	7	2	1-4
Apr 90	38	21	8	2	1-4
May 90	5	0	0	0	0
Jul 90	3	0	0	0	0

occurs in the upper 100 m, as do small *B. ?infundibulum*; the vertical distribution of *Dryodora glandiformis* is not well known, but it also sometimes occurs above 100 m. The vertical distribution of the hosts suggests that the dinospores of *Oodinium* sp. may typically live deeper than 75 to 100 m (unless all the hosts acquire the infection near the surface during occasional mixing). The appearance of most of the host species in Friday Harbor varies seasonally, making the life cycle of *Oodinium* sp. difficult to interpret. Nevertheless, it can be stated that *Oodinium* sp. trophozoites are numerous in the late fall and winter and then dwindle to zero and are virtually absent from ctenophore and medusan hosts from mid-spring until mid-autumn.

Identification of *Bolinopsis ?infundibulum* is uncertain because it is not clear to taxonomists which ctenophores correspond to those originally designated as *B. infundibulum*. The animals in question in the San Juan Archipelago are easily identified (Mills 1987); it is only the certainty of their specific name that has not yet been clarified, and a worldwide comparison of members of the genus is required before a definitive name can be applied. The *Euphysa* sp. that was infected is the deep water morph having jagged, or slightly branched, radial canals; it has been described and figured by Arai & Mason (1982), and its distribution was discussed by Mackie (1985).

The morphology of the parasite seen on the ctenophores and medusa did not appear to be different from that of *Oodinium jordani* except with regard to the sharpness of the peduncular ridges. The physical forces

affecting *O. jordani* on the fin of a chaetognath, and a parasite on the surface of a cilia-driven ctenophore or the subumbrellar surface of a jet-propulsing medusa, must be quite dissimilar, and may influence the morphology of the peduncle, which is the attachment organelle. Such an environmental effect on morphology is commonly seen among marine invertebrates; e.g. in gastropods (Struhsaker 1968), in barnacles (Darwin 1854, N. D. Pentcheff pers. comm.), and in sponges (Palumbi 1986). We suggest that the noted morphological differences may be a reaction to these forces, and do not necessarily warrant designation of the parasite as a new species. It is evidently a species of the genus *Oodinium*, and may be a morphological variant of *O. jordani*. (The absence of *Oodinium* sp. from ctenophore or medusan hosts in May–June 1990 when *O. jordani* was frequently seen on *Sagitta elegans*, however, suggests caution in assuming that the 2 forms are identical.)

As with *Oodinium jordani* on the fins of the chaetognath *Sagitta elegans* in Friday Harbor and adjacent waters (McLean & Nielsen 1989), the preferred site of attachment for the ctenophoral and medusan parasite is one in which it is moved about violently by the swimming of the host – by beating of the locomotory cilia in ctenophores and by reciprocal flushing of the bell during swimming pulsations by hydromedusae. McLean & Galt (1990) have observed similar site selection by a parasitic dinoflagellate (in the genus *Apodinium*) that occurs on the vigorously beating tail of an appendicularian (larvacean) urochordate at Friday Harbor.

Although the chaetognath *Sagitta elegans* can be much more abundant in the San Juan Archipelago and nearby marine waters (known informally as the Salish Sea) than are ctenophores (Mackie & Mills 1983, Mackie 1985, Mills unpubl.), we suggest that ctenophores are at least equally important as hosts for oodiniids. *Beroe abyssicola* and *Bolinopsis ?infundibulum* showed a very high incidence of infection in the winter (most carried trophozoites) in contrast to *S. elegans* (most were not infected); most of these ctenophores carried numerous trophozoites, whereas infected *S. elegans* typically bore 1 or 2, with rarely as many as 14.

Since the oodiniids are large among the Protista and are readily visible with the unaided eye, and since the surface plankton has been studied intensively at Friday Harbor in recent years, we feel that such parasites would have been recognized previously had they been present. It is of interest that this report of ectoparasitism in the Ctenophora and Cnidaria, the former a phylum not previously known to be parasitized by the Dinoflagellata (Cachon & Cachon 1987), cites 6 infected genera in 2 phyla; and that *Oodinium jordani*, which was described quite recently, was reported from a member of yet another phylum. If, indeed, *Oodinium* sp. proves to be identical to *O. jordani*, it is possible that this species is a recent arrival in the waters of the San Juan Archipelago, and that it is rapidly becoming compatible with a plethora of hosts representing at least 3 phyla.

Acknowledgements. We are grateful to Dr Dennis Willows, Director of the Friday Harbor Laboratories, University of Washington, for use of research facilities. Special thanks are extended to our many colleagues who helped collect ctenophores. The described parasitic phenomenon on ctenophores was first seen during joint observations by Dr

Responsible Subject Editor: A. K. Sparks, Seattle, Washington, USA

Larry Madin, Dr Eugene Kozloff and C.E.M. Mr Urs Schmidt-Ott drew our attention to the parasite on *Euphysa*.

LITERATURE CITED

- Arai, M. N., Mason, J. C. (1982). Spring and summer abundance and vertical distribution of hydromedusae of the central Strait of Georgia, British Columbia. *Syesis* 15: 7–15
- Cachon, J., Cachon, M. (1971). *Protoodinium chattoni* Hovasse. Manifestations ultrastructurales des rapports entre le péridinien et la méduse-hôte: fixation, phagocytose. *Arch. Protistenk.* 113: 293–305
- Cachon, J., Cachon, M. (1987). Parasitic dinoflagellates. In: Taylor, F. J. R. (ed.) *The biology of dinoflagellates*. Blackwell Scientific Publications, Oxford, p. 571–610
- Darwin, C. (1854). A monograph on the subclass Cirripedia with figures of all the species. Ray Society, London
- Lauckner, G. (1980). Diseases of Cnidaria. In: Kinne, O. (ed.) *Diseases of marine animals*, Vol. I. John Wiley & Sons, Chichester, p. 167–237
- Mackie, G. O. (1985). Midwater macroplankton of British Columbia studied by submersible *PISCES IV*. *J. plankton Res.* 7: 753–777
- Mackie, G. O., Mills, C. E. (1983). Use of the *Pisces IV* submersible for zooplankton studies in coastal waters of British Columbia. *Can. J. Fish. Aquat. Sci.* 40: 763–776
- McLean, N., Galt, C. P. (1990). *Apodinium floodi* n. sp., a dinoflagellate (Dinoflagellata: Apodinidae) ectoparasitic on *Oikopleura labradoriensis* (Urochordata: Larvacea). *Dis. aquat. Org.* 9: 213–219
- McLean, N., Nielsen, C. (1989). *Oodinium jordani* n. sp., a dinoflagellate (Dinoflagellata: Oodinidae) ectoparasitic on *Sagitta elegans* (Chaetognatha). *Dis. aquat. Org.* 7: 61–66
- Mills, C. E. (1987). Phylum Ctenophora. In: Kozloff, E. N. (ed.) *Marine invertebrates of the Pacific Northwest*. University of Washington Press, Seattle and London, p. 79–81
- Palumbi, S. R. (1986). How body plans limit acclimation: responses of a demosponge to wave force. *Ecology* 67: 208–214
- Struhsaker, J.W. (1968). Selection mechanisms associated with intraspecific shell variation in *Littorina picta* (Prosobranchia: Mesogastropoda). *Evolution* 22: 459–480

Manuscript first received: June 13, 1990

Revised version accepted: February 20, 1991