

# Spatial and temporal variation in *Anguillicola crassus* counts: results of a 4 year survey of eels in Mediterranean lagoons

F. Lefebvre, P. Contournet, F. Priour, O. Soulas, A. J. Crivelli\*

Station Biologique de la Tour du Valat, Le Sambuc, 13200 Arles, France

**ABSTRACT:** We present the results of a survey of anguillicolosis in the Rhône River delta. From January 1997 to December 2000, a total of 13319 eels (*Anguilla anguilla* from elver to silver phase) were examined, in which we found 22 227 swimbladder nematodes (*Anguillicola crassus* adults and pre-adults). A generalised linear model (GLM) framework was used to explore the relative contribution of various factors to the occurrence, intensity and abundance of the parasite. We reveal a major influence of the month of sampling, and we document the existence of a seasonal pattern with regular peaks in early summer and late winter. In contrast, the year of sampling is of secondary importance, and no particular trend in the development of the infection can be detected. More than a decade after the first record of *A. crassus* in the Rhône River delta, anguillicolosis has thus attained a constant infection rate of nearly 50%, with a mean number of 3 or 4 macroscopic lumen worms per infected eel. The eel length strongly influences the intensity and the abundance of the nematode, but has little if any effect on the probability of being infected. There exists a linear relationship between eel size and the number of parasites, but not between eel size and prevalence. We observe a decrease in the proportion of infected individuals among elver eels. We discuss this result in relation to the possible mortality of heavily infected individuals and/or a change in the eels' alimentary diet.

**KEY WORDS:** Epidemiology · Anguillicolosis · *Anguilla anguilla* · *Anguillicola crassus* · Host-parasite system · Parasite distribution

Resale or republication not permitted without written consent of the publisher

## INTRODUCTION

The European eel *Anguilla anguilla* was recently infected by the Asian swimbladder nematode *Anguillicola crassus* (Kuwahara et al. 1974). The parasite was brought to Europe probably as a result of importation of its native host, the Japanese eel *Anguilla japonica* (Peters & Hartmann 1986). The first case of infection (i.e. anguillicolosis) was in 1982, in West Germany (Neumann 1985). In France, *A. crassus* was first recorded in 1985 in the Rhône River delta (Dupont & Petter 1988). Since then, the parasite has rapidly colonised nearly all European countries, North Africa

(Køie 1991, Moravec 1994 and references therein), and has now arrived in the American continent (Fries et al. 1996, Barse & Secor 1999).

As a result of the concern caused by its presence in the eel stocks, the nematode has been the focus of considerable attention. Its life cycle has been thoroughly described and completed in the laboratory (de Charleroy et al. 1990, Kennedy & Fitch 1990, Blanc 1994). Infection occurs through the ingestion of planktonic crustaceans (copepods, ostracods) as intermediate hosts, but fishes (stickleback, goby, ruffe, pumpkinseed) and many other aquatic organisms (insect larvae, amphibians) may also act as paratenic hosts (Thomas & Ollevier 1992, Moravec & Škoríková 1998, Cesco et al. 2001). In the eel, the nematode larvae moult and develop within the tissue layers of the

\*Corresponding author. E-mail: a.crivelli@tour-du-valat.com

swimbladder wall, but pre-adult and adult worms inhabit the swimbladder lumen. Herein, lumen worms actively feed on the capillary system before they reproduce and die. At 20°C, under laboratory conditions, the life cycle can be completed in less than 2 mo (de Charleroy et al. 1990), but may take much longer in the wild (nearly 6 mo according to Thomas & Ollevier 1993). In fact, there are still some open questions about the temporal pattern of the infection in natural waters. Fluctuations in prevalence and intensity of the infection were generally observed across time, but for many reasons, most studies have failed to detect any seasonality (Kennedy & Fitch 1990, Möller et al. 1991, Thomas & Ollevier 1992, Molnár et al. 1994, Würtz et al. 1998). It is not known, however, to what extent temporal variation in other factors such as eel length may influence the observed parasite count. Generally, the number of parasites steadily increases along with the increasing host size (Thomas & Ollevier 1992, Molnár et al. 1994, Baruš et al. 1996), but other data do not support a linear relationship (Peters & Hartmann 1986, Würtz et al. 1998). In fact, most studies have investigated separately the importance of these factors, whereas interactions between them may generate confounding effects.

The first objective of this study was to simultaneously assess the relative contribution of various spatial and temporal factors on the parasite count. Parasitic descriptors of the infection (prevalence, intensity and abundance) were then described and discussed in relation to the major factors previously identified. Data was derived from a survey program of anguillicolosis initiated in 1997 in the Rhône River delta (Camargue, South of France). Thus, this study also documents the spread of the infection more than a decade after its first report in this area (in 1985: Dupont & Petter 1988), which was also the first case reported in France.

## MATERIALS AND METHODS

Eels were collected from brackish waters of the Rhône River delta. Two sample sites were investigated: the Vaccarès lagoon (6400 ha, mean salinity 10 g l<sup>-1</sup>) and the Malagroy lagoon (4600 ha, mean salinity 25 g l<sup>-1</sup>). Monthly sampling was conducted over 4 consecutive years from January 1997 to December 2000 (in 1999, only 6 mo were sampled: April, May, June, September, October, November). In each site, 2 fyke nets (one with a 6 mm mesh in the funnels and a leading net of 40 m, the other with 0.5 mm mesh and a leading net of 20 m) were used to catch all size classes. The nets were set on 4 consecutive days per month and visited every 24 h. Eels were frozen on the day of capture and examined later.

The total length (TL) of each fish was recorded to the nearest millimetre. The swimbladder of all eels was removed and macroscopically examined for the presence of *Anguillicola crassus*. The number of lumen worms (pre-adults and adults) was recorded. Throughout the study, the parasitic descriptors are used in accordance with the recommendations of Bush et al. (1997): each eel was classified as infected or uninfected, herein referring to the occurrence of the parasite (presence/absence data); intensity is the number of parasites in a single infected eel; abundance is the number of parasites in a single eel regardless of whether or not the eel is infected. The effects of sampling site, year, month and host length on the above 3 parasitic descriptors were explored within a generalised linear model (GLM) framework. Sampling site (Vaccarès, Malagroy), year (1997, 1998, 1999, 2000) and month were entered as categorical predictors, and TL as a continuous predictor. Intensity and abundance were fitted by a normal distribution after log-transformation ( $\ln x + 1$ ), and an identity-link function was used. In the case of occurrence, the response variable was binomial, and a logit-link function was used. Because of missing data in the monthly sampling in 1999, some first- and second-order interactions (year  $\times$  month and year  $\times$  month  $\times$  sampling site) cannot be estimated, and for this reason only main effects were included in the models. The goodness of fit of the GLMs was checked by the ratio of the model deviance to its degree of freedom (deviance/df < 1). The contribution of model terms and their significance were checked by the chi-square values ( $\chi^2$ ) of the likelihood Type 3 test (Burnham & Anderson 1998).

Epidemiological data were then presented in relation to sampling units of time (1 mo step) or host size-class (25 mm step). In this case, mean intensity and mean abundance are the average intensity and abundance in the sampling unit, and prevalence refers to the percentage of infected hosts within each sampling unit. Comparisons of prevalence values between host size-classes were performed by  $\chi^2$  tests. Relationships between parasitic descriptors and host size were assessed by Spearman rank tests. Results were expressed as mean  $\pm$  SE. Graphs were all drawn on natural (not transformed) data. In the case of estimates, means were computed on a transformed scale and then de-transformed.

## RESULTS

A total of 13 319 eels covering all size-classes (60 to 717 mm in length) was examined during the 4 yr survey. A total of 22 227 *Anguillicola crassus* was counted in the lumens of swimbladders. The results of the

Table 1. *Anguilla anguilla*. Results of generalised linear model examining effects of year, month, site and total length (TL) on prevalence, intensity and abundance of *Anguillicola crassus* in the eel (likelihood Type 3 tests)

Effect	df	$\chi^2$	p
<b>Prevalence</b>			
Year	3	7.83	<0.05
Month	11	293.74	<0.001
Site	1	0.64	0.42
TL	1	1.96	0.16
<b>Intensity</b>			
Year	3	38.35	<0.001
Month	11	175.49	<0.001
Site	1	4.57	<0.05
TL	1	254.17	<0.001
<b>Abundance</b>			
Year	3	32.94	<0.001
Month	11	480.29	<0.001
Site	1	0.09	0.76
TL	1	57.62	<0.001

model are presented in Table 1. The month of sampling had a pronounced influence on the number of *A. crassus* found in the swimbladder of eels. It was the most important variable explaining occurrence and abundance. In contrast, sampling site had only a marginal effect. Data from the 2 lagoons (Vaccarès and Malagroy) may thus be pooled as a single sample. The validity of this statistical decision was supported by the large-scale connection between the 2 lagoons, which suggested the existence of a single sub-population of the European eel. For each of the above parasitic descriptors, year had a secondary but significant influence, thus precluding synthesis on an annual scale.

For the model of occurrence, the term TL was not significant, indicating that host size had little if any influence on the probability of infection. In contrast, the significant effect of TL on intensity (its major contributing factor) and abundance stressed the need to take the fish size into account in examining monthly variations in parasite counts.

### Temporal infection dynamics

From January 1997 to December 2000, the prevalence in monthly samples varied between 40 and 72% (Fig. 1). Highest prevalence values were recorded in early summer (June and July) each year. Mean monthly intensity varied from  $1.50 \pm 0.50$  (but

$n = 2$ ) to  $7.72 \pm 1.14$  ( $n = 82$ ) parasites per infected host with an overall mean intensity of  $3.36 \pm 0.04$  ( $n = 6627$ ) (Fig. 2A). Maximum values for mean intensity were in early summer (June and July) or late winter (January and February). Monthly mean abundance varied from  $0.75 \pm 0.48$  ( $n = 4$ ) to  $5.41 \pm 0.86$  ( $n = 117$ ) (Fig. 3A). As for mean intensity, highest values were observed either in early summer or late winter. However, since the host size was shown to have a significant effect on the parasite count (Table 1), monthly mean intensity and mean abundance values had to be corrected by eel length. The results are presented in Figs. 2B & 3B. For each year, there was still a marked peak around June, as well as a trend for increasing values at the end of winter.

Although a significant difference between years was revealed (Table 1), there was no particular trend in the development of the infection across the 4 yr survey. Prevalence seemed to stabilise around 50% (Fig. 1), and the mean number of parasites ranged between 3 and 4 per infected host (between 2 and 3 for host sizes of 210 mm length) (Fig. 2).

### Infection and host size

All size-classes of eel were infected by *Anguillicola crassus* (Fig. 4A). The smallest infected individual was 71 mm long, although a low prevalence value was recorded among eels shorter than 75 mm (prevalence = 8%,  $n = 26$  in the first size-class ranging from 50 to 74 mm). High infection rates were reached in the next 2 size classes (prevalence = 65% for 75 to 99 mm length,  $n =$

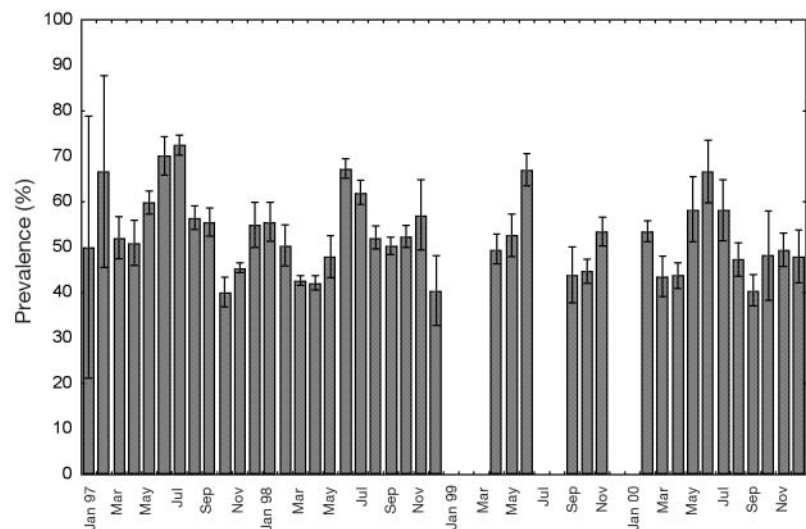


Fig. 1. *Anguilla anguilla*. Mean ( $\pm$ SE) prevalence of *Anguillicola crassus* as a function of month of the year

163; prevalence = 64 % for 100 to 124 mm length,  $n = 806$ ). There was a significant increase in prevalence between the first and the second size-classes ( $\chi^2 = 30.10$ ,  $p < 0.001$ ). In the fourth size class, prevalence values fell to 46 % (125 to 149 mm,  $n = 2013$ ), and the decrease was statistically significant (third size class vs fourth size class:  $\chi^2 = 74.79$ ,  $p < 0.001$ ). A decreasing trend was recorded up to the sixth size-class (for 175 to 199 mm length, prevalence = 45 %,  $n = 2161$ ). Thereafter, prevalence increased with increasing host size, and the highest values were recorded among the largest size classes (maximum: 70 % in eels longer than 600 mm,  $n = 33$ ). No significant linear correlation was found between prevalence values and overall size classes ( $r = 0.33$ ,  $n = 23$ ,  $p = 0.13$ ).

The lowest mean intensities were observed among the smallest infected eels ( $2.00 \pm 1.41$  for 50 to 74 mm length,  $n = 2$ ;  $2.13 \pm 0.13$  for 75 to 99 mm length,  $n = 106$ ). A significant positive correlation was found between intensities and TL ( $r = 0.16$ ,  $n = 6627$ ,  $p < 0.001$ ) and between mean intensities and host size-classes ( $r = 0.92$ ,  $n = 23$ ,  $p < 0.001$ ). The increase was perfectly linear for eels up to 350 mm long (size at silvering in males) (Fig. 4B). The highest parasite burden was 78 *A. crassus* in a 548 mm-long eel.

Variation in mean abundance integrated these trends in prevalence and intensity, with a bell-shaped curve for small size classes and thereafter a trend of increasing values with increasing host size (Fig. 4C). A significant positive correlation was found between mean abundance and host size-class ( $r = 0.89$ ,  $n = 23$ ,  $p < 0.001$ ), but not between abundance and TL ( $r = 0.00$ ,  $n = 13\,319$ ,  $p = 0.93$ ).

## DISCUSSION

The most important factors explaining variation in *Anguillicola crassus* count were the month of sampling for prevalence and abundance, and host length for intensity. Although there was a consistent difference in salinity between the 2 brackish lagoons (10 and 25 g l<sup>-1</sup>), sampling site had little effect on parasitic values. It is rather surprising because salinity has been shown to have a major influence on parasite biology (Nielsen 1997, Kirk et al. 2000). In particular, parasite development and transmission appears to be lower in brackish and marine waters than in fresh waters (Kirk et al. 2000).

No particular trend in the development of the infection could be detected across the 4 years of the survey. More than a decade after the first record of *Anguillicola crassus* in the Rhône River delta (1985: Dupont & Petter 1988), anguillicolosis has since reached a constant infection rate of nearly 50%. Our results support the possibility of a stabilisation in the infection level, as has already been recorded in other European countries (van Willigen & Dekker 1989, Ashworth 1994). Generally, the infection spreads rapidly in the first few years following its appearance, before stabilising around a spe-

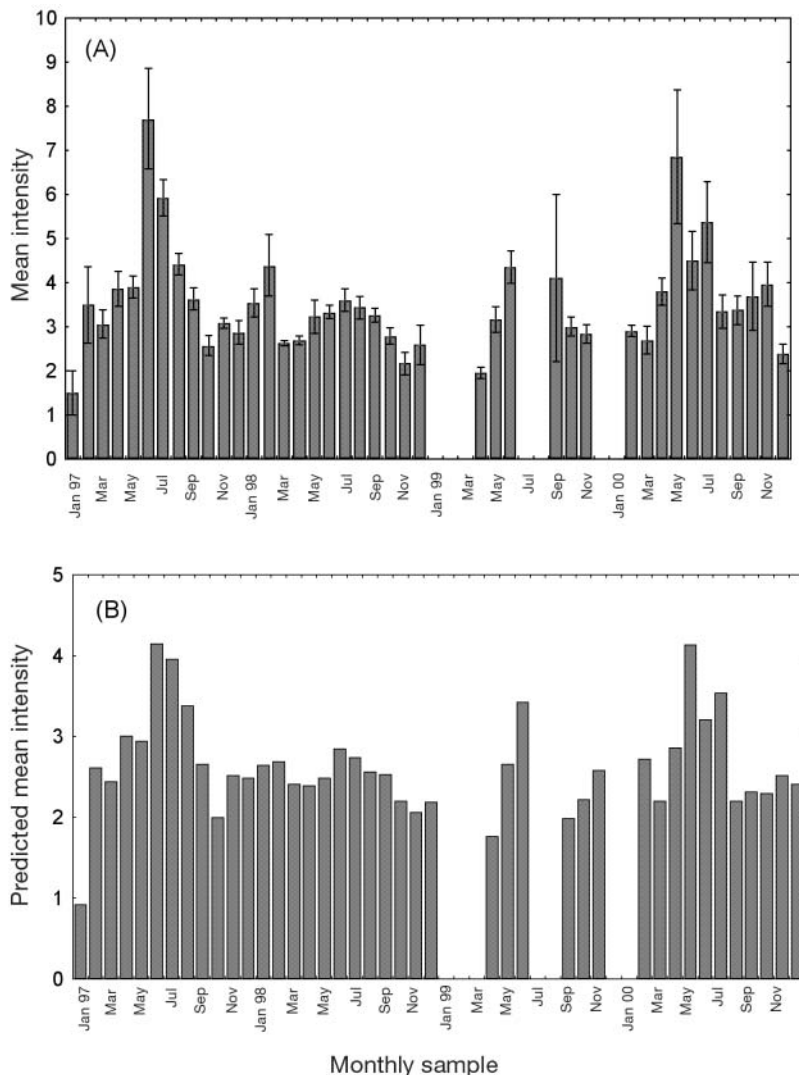


Fig. 2. *Anguilla anguilla*. (A) Mean ( $\pm$ SE) intensity (no. of parasites per infected host) and (B) predicted mean intensity of infection by *Anguillicola crassus* as a function of month of the year. Predicted values based on total eel length of 210 mm



cific value of prevalence. The mean intensity also seems to have attained an equilibrium level. We recorded yearly means of between 3 and 4 parasites per eel (between 2 and 3 for an eel 210 mm in length). Although comparisons with data in the literature are obviously difficult (differences in sample size, host size, season), the mean intensities reported have rarely exceeded 5 macroscopic lumen parasites per eel. Some authors have even reported a mean threshold value of 4 adult parasites per infected eel (Ashworth 1994). Different mechanisms have been advanced to explain the nature of this phenomenon, including density-dependent effects (Ashworth & Kennedy 1999), host adaptation (Buchmann et al. 1991, Höglund & Pilström 1995, Kelly et al. 2000), and mortality of heavily infected individuals (Molnár et al. 1994, Baruš & Prokeš 1996).

Adult nematodes were found in the swimbladder of eels throughout the year (minimum prevalence of 40%). Despite this, a temporal pattern in the parasitic descriptors was evident. Maximum values of prevalence, mean intensity and mean abundance were recorded each year in early summer and, to a lesser degree, in late winter. As previously mentioned, almost all investigations have failed to detect any seasonality (Kennedy & Fitch 1990, Möller et al. 1991, Thomas & Ollevier 1992, Molnár et al. 1994, Würtz et al. 1998). Nevertheless, the existence of seasonal peaks has already been noted (Benajiba et al. 1994, Hartmann 1994, Nagasawa et al. 1994). Of particular interest is the study of Benajiba et al. (1994), which also recorded biannual peaks in another brackish lagoon (Mauguio, South of France). Such periodicity tends to support the existence of a 6-month life cycle for the nematode (Thomas & Ollevier 1993).

Infection may occur in all size classes of eels in their continental phase. We found here that the smallest infected individual was 71 mm long, and that a total of 108 eels smaller than 100 mm (57%) already harboured lumen worms in their swimbladders. These field data are thus in total accordance with the results of laboratory experiments that have demonstrated successful inoculations of *Anguillicola crassus* in glass eels (de Charleroy et al. 1990, Nimeth et al. 2000). As mentioned by van Ban-

ning & Haenen (1990), this means that glass eels may become infected as soon as they arrive in continental waters (i.e. as soon as they feed on zooplankton).

We found a clear relationship between parasite intensity and host size on both a total length and a size-class basis. As already reported in earlier studies, larger eels thus harbour more parasites, smaller eels fewer parasites (Möller et al. 1991, Thomas & Ollevier 1992, Molnár et al. 1994). This seems to be a general trend in fish-parasite systems (Dogiel et al. 1958, but see Poulin 2000 for critical review). In theory, in the absence of an effective immune response, as in the present case (Békési et al. 1997, Knopf et al. 2000), an accumulation of parasites may result from: (1) longer exposure time (i.e. older fish have had more time to accumulate para-

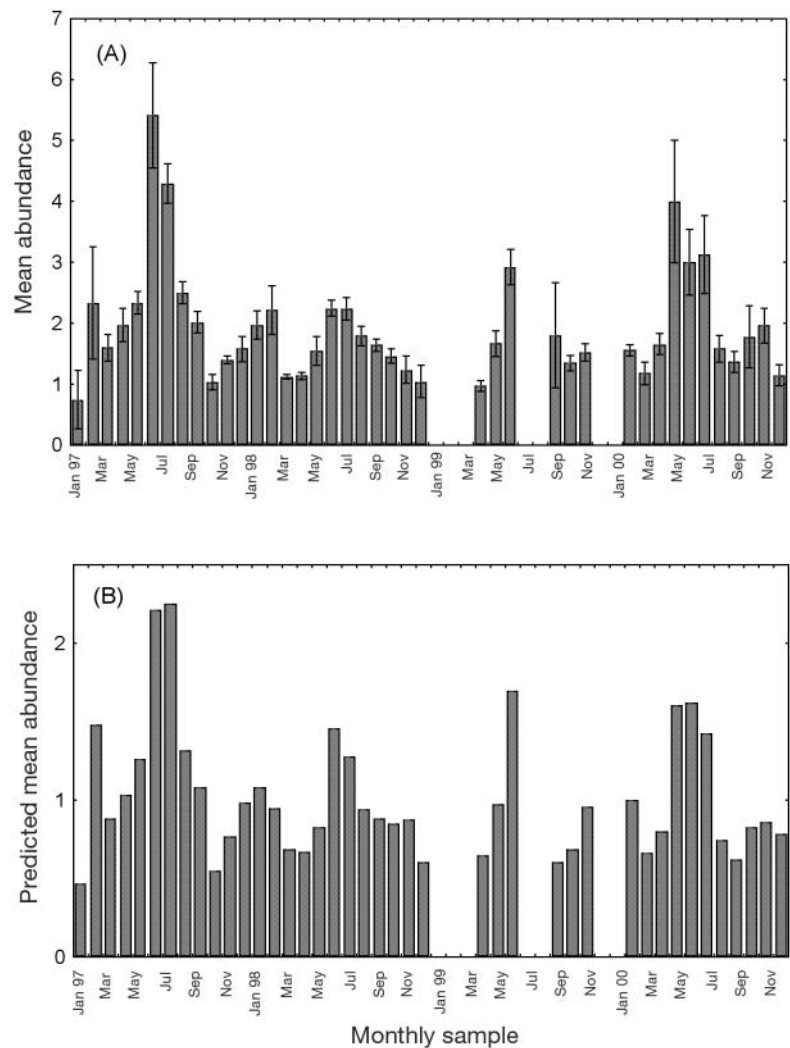


Fig. 3. *Anguilla anguilla*. (A) Mean ( $\pm$ SE) abundance (no. of parasites) and (B) predicted mean abundance of *Anguillicola crassus*, in all eels sampled, as a function of month of the year. Predicted values based on a total eel length of 209 mm

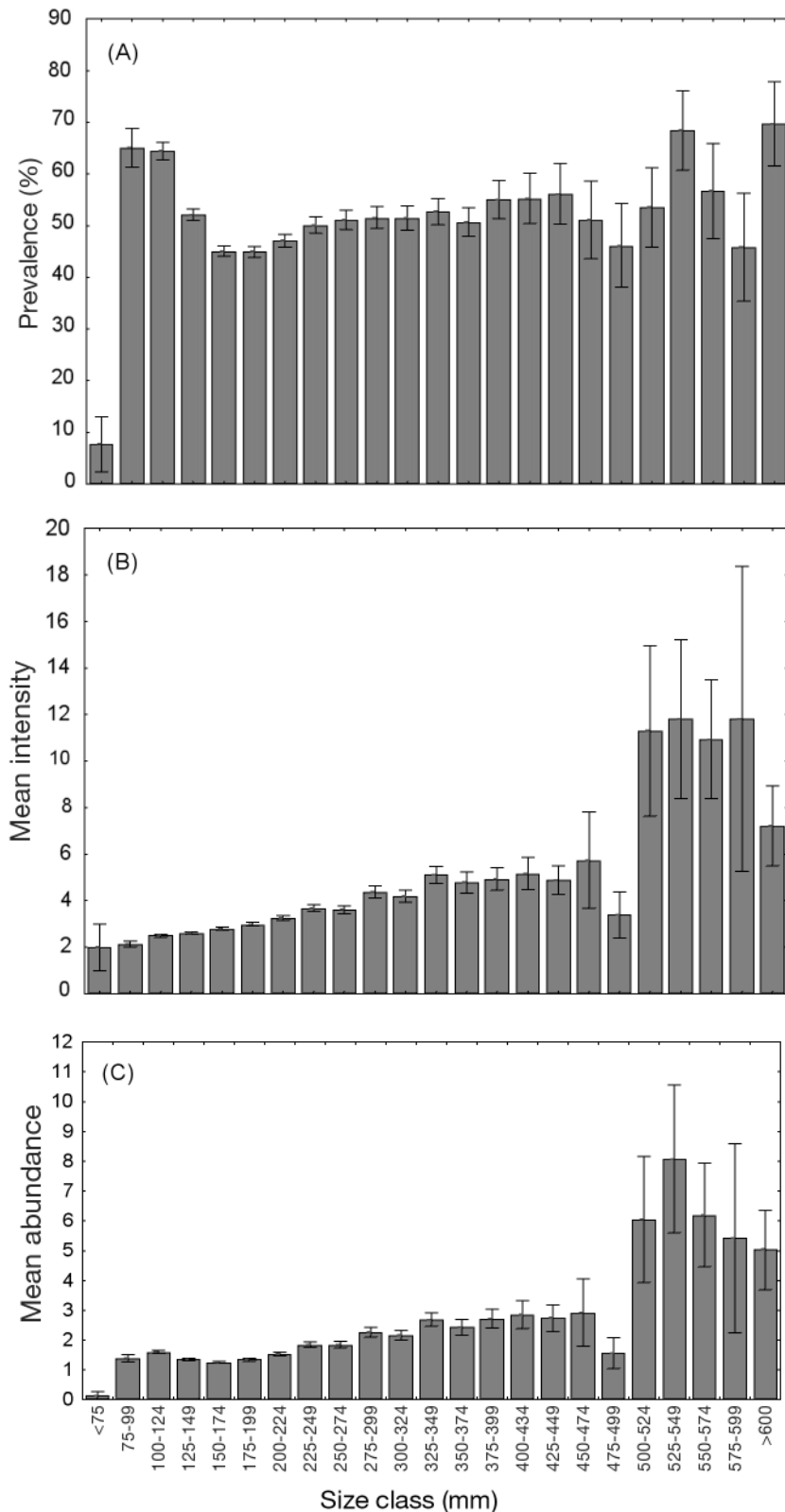


Fig. 4. *Anguilla anguilla*. (A) Mean ( $\pm$ SE) prevalence, (B) mean ( $\pm$ SE) intensity (no. of parasites per infected host) and (C) mean ( $\pm$ SE) abundance (no. of parasites in all eels sampled) as a function of eel size. Size-classes are in millimetres, with 25 mm intervals

sites than younger fish); (2) larger host area (body size) for parasite establishment; (3) higher consumption of infected prey with increasing host size. The positive relationship we report here is of particular interest, because it was observed for an association in which the life cycle of the parasite is relatively short compared to the life span of the host. To some extent, this means that eels suffer continuous parasite pressure either via re-infection(s) or via the maturation of parasite larvae in arrested development in the tissue layers of the swimbladder wall (Ashworth & Kennedy 1999).

However, the probability of harbouring lumen worms is not constant throughout all eel size-classes. The prevalence was first low (8% in eels smaller than 75 mm in length), then relatively high (65% between 75 and 124 mm in length) before suddenly decreasing in the subsequent size classes (45% between 175 and 199 mm in length). In the literature, some authors have reported a decrease in the prevalence of lumen worms with increasing host length (Möller et al. 1991), while others have noted an increase (Thomas & Ollevier 1992, Baruš et al. 1996). The disparity is probably related to the variations we observed among elver eels.

The observed trends in prevalence and intensity produced a bell-shaped curve of parasite abundance as a function of host size (50 to 175 mm). Theoretical studies and empirical investigations have postulated that a local decrease in mean parasite abundance may reflect host mortality i.e. the deaths of heavily infected hosts (Gordon & Rau 1982). However, alternative hypotheses could also account for the observed decrease in parasite abundance. For example, eels are known to change their alimentary diet during the elver phase, first feeding on planktonic crustaceans, and then becoming increasingly piscivorous (Tesch 1977). Thus, the differential infection rate could also result from a differential efficiency of the parasite transmission between intermediate and paratenic hosts.

**Acknowledgements.** We would like to thank Gilles Poizat, Serge Morand and Vincent Boy for their constructive comments on the manuscript. We are also grateful to Anna Saltmarsch for English corrections. This study was supported by the Foundation Tour du Valat.

## LITERATURE CITED

- Ashworth ST (1994) Possible regulation in the *Anguillicola crassus* host-parasite system. In: Pike AW, Lewis JW (eds) Parasitic diseases of fish. UK Samara Publishing, Tresaith, Dyfed, p 141–150
- Ashworth ST, Kennedy CR (1999) Density-dependent effects on *Anguillicola crassus* (Nematoda) within its European eel definitive host. *Parasitology* 118:289–296
- Barse AM, Secor DH (1999) An exotic nematode parasite of the American eel. *Fisheries Bethesda* 24:6–10
- Baruš V, Prokeš M (1996) Length-weight relations of uninfected and infected eels (*Anguilla anguilla*) by *Anguillicola crassus* (Nematoda). *Folia Zool* 45:183–189
- Baruš V, Halačka K, Prokeš M (1996) Presence and distribution of the nematode *Anguillicola crassus* in the European eel in the Morava river drainage basin, Czech Republic. *Zivoc Vyroba* 41:219–224
- Békési L, Hornok S, Székely C (1997) Attempts to analyse *Anguillicola crassus* infection and the humoral host response in eels (*Anguilla anguilla*) of lake Balaton, Hungary. *Acta Vet Hung* 45:439–445
- Benajiba MH, Silan P, Marques A, Bouix G (1994) Protozoaires et métazoaires parasites de l'anguille *Anguilla anguilla* L., 1758: structures temporelles de leurs populations dans une lagune méditerranéenne. *Ann Sci Nat Zool Biol Anim* 15:141–149
- Blanc G (1994) Biologie du cycle d'*Anguillicola crassus* (Nematoda, Dracunculoidea) — contrôle thérapeutique de ses populations. Thèse doctorat, Université Perpignan
- Buchmann K, Pedersen LO, Glamann J (1991) Humoral immune response of European eel *Anguilla anguilla* to a major antigen in *Anguillicola crassus* (Nematoda). *Dis Aquat Org* 12:55–57
- Burnham KP, Anderson DR (1998) Model selection and inference: a practical information theoretic approach. Springer, New York
- Bush AO, Lafferty KD, Lotz JM, Shostak AW (1997) Parasitology meets ecology on its own terms: Margolis *et al.* revisited. *J Parasitol* 83:575–583
- Cesco H, Lambert A, Crivelli AJ (2001) *Pseudorasbora parva* (téléostéen, Cyprinidae) espèce invasive, nouvel agent du maintien et de la dissémination de l'anguillicolose en France? *Parasite* 8:75–76
- de Charleroy D, Grisez L, Thomas K, Belpaire C, Ollevier F (1990) The life cycle of *Anguillicola crassus*. *Dis Aquat Org* 8:77–84
- Dogiel VA, Petrushevski GK, Polyanski YI (1958) Parasitology of fishes. Oliver & Boyd, London
- Dupont F, Petter AJ (1988) *Anguillicola*, une épizootie pluri-spécifique en Europe: apparition de *Anguillicola crassa* (Nematoda, Anguillicolidae) chez l'anguille européenne *Anguilla anguilla* en Camargue, Sud de la France. *Bull Fr Pêche Piscic* 308:38–41
- Fries LT, Williams DJ, Johnson SK (1996) Occurrence of *Anguillicola crassus*, an exotic parasitic swim bladder nematode of eels, in the southeastern United States. *Trans Am Fish Soc* 125:794–797
- Gordon DM, Rau ME (1982) Possible evidence for mortality induced by the parasite *Apatemon gracilis* in a population of brook sticklebacks (*Culaea inconstans*). *Parasitology* 84:41–47
- Hartmann F (1994) Untersuchungen zur Biologie, Epidemiologie und Schädigung von *Anguillicola crassus* Kuwahara, Niimi & Itagaki 1974 (Nematoda), einem blutsaugenden Parasiten in der Schwimmblase des Europäischen Aals (*Anguilla anguilla*), 1st edn. Shaker Verlag, Aachen
- Höglund J, Pilström L (1995) Mechanical isolation and characterization of antigens from adult *Anguillicola crassus*. *Fish Shellfish Immunol* 5:51–60
- Kelly CE, Kennedy CR, Brown JA (2000) Physiological status of wild European eels (*Anguilla anguilla*) infected with the parasitic nematode, *Anguillicola crassus*. *Parasitology* 120:195–202
- Kennedy CR, Fitch DJ (1990) Colonization, larval survival and epidemiology of the nematode *Anguillicola crassus*, parasit in the eel, *Anguilla anguilla*, in Britain. *J Fish Biol* 36:117–131
- Kirk RS, Kennedy CR, Lewis JW (2000) Effect of salinity on hatching, survival and infectivity of *Anguillicola crassus* (Nematoda: Dracunculoidea) larvae. *Dis Aquat Org* 40:211–218
- Knopf K, Naser K, van der Heijden MH, Taraschewski H (2000) Humoral immune response of European eel *Anguilla anguilla* experimentally infected with *Anguillicola crassus*. *Dis Aquat Org* 42:61–69
- Køie M (1991) Swimbladder nematodes (*Anguillicola* spp.) and gill monogeneans (*Pseudodactylogyrus* spp.) parasitic on the European eel (*Anguilla anguilla*). *J Cons Int Explor Mer* 47:391–398
- Kuwahara A, Niimi A, Itagaki H (1974) Studies of a nematode parasite in the air bladder of the eel. I. Description of *Anguillicola crassa* n. sp. (Philometridae, Anguillicolidae). *Jpn J Parasitol* 23:275–279
- Möller H, Holst S, Luchtenberg H, Petersen F (1991) Infection of eel *Anguilla anguilla* from the River Elbe estuary with two nematodes, *Anguillicola crassus* and *Pseudodactylogyrus decipiens*. *Dis Aquat Org* 11:193–199
- Molnár K, Székely C, Perényi M (1994) Dynamics of *Anguillicola crassus* (Nematoda: Dracunculoidea) infection in eels of Lake Balaton, Hungary. *Folia Parasitol (České Budějovice)* 41:193–202
- Moravec F (1994) Parasitic nematodes of freshwater fishes of Europe. Academia, Praha
- Moravec F, Skoříková B (1998) Amphibians and larvae of aquatic insects as new paratenic hosts of *Anguillicola crassus* (Nematoda: Dracunculoidea), a swimbladder parasite of eels. *Dis Aquat Org* 34:217–222
- Nagasawa K, Kim YG, Hirose H (1994) *Anguillicola crassus* and *Anguillicola globiceps* (Nematoda: Dracunculoidea) parasitic in the swimbladder of eels (*Anguilla japonica* and *A. anguilla*) in East Asia. *Folia Parasitol (České Budějovice)* 41:127–137
- Neumann W (1985) Schwimmblasenparasit *Anguillicola* bei Aalen. *Fischer Teichwirt* 36:322
- Nielsen ME (1997) Infection status of the swimbladder worm, *Anguillicola crassus* in silver stage European eel, *Anguilla anguilla*, from three different habitats in Danish waters. *J Appl Ichthyol* 13:195–196
- Nimeth K, Zwerger P, Würtz J, Salvenmoser W, Pelster B (2000) Infection of the glass-eel swimbladder with the nematode *Anguillicola crassus*. *Parasitology* 121:75–83
- Peters G, Hartmann F (1986) *Anguillicola*, a parasitic nematode of the swimbladder spreading among eel populations in Europe. *Dis Aquat Org* 1:229–230
- Poulin R (2000) Variation in the intraspecific relationship

- between fish length and intensity of parasitic infection: biological and statistical causes. *J Fish Biol* 56:123–137
- Tesch FW (1977) The eel: biology and management of anguillid eels. Chapman & Hall, London
- Thomas K, Ollevier F (1992) Paratenic hosts of the swimbladder nematode *Anguillicola crassus*. *Dis Aquat Org* 13: 165–174
- Thomas K, Ollevier F (1993) Hatching, survival, activity and penetration efficiency of second-stage larvae of *Anguillicola crassus* (Nematoda). *Parasitology* 107:211–217
- van Banning P, Haenen OLM (1990) Effects of the swimbladder nematode *Anguillicola crassus* in wild and farmed eel, *Anguilla anguilla*. In: Perkins FO, Cheng TC (eds) *Pathology in marine science*. Academic Press, New York, p 317–330
- van Willigen J, Dekker W (1989) 1988 update on *Anguillicola* in Dutch outdoors waters. EIFAC (FAO) Working Party on Eel, Porto
- Würtz J, Knopf K, Taraschewski H (1998) Distribution and prevalence of *Anguillicola crassus* (Nematoda) in eels *Anguilla anguilla* of the rivers Rhine and Naab, Germany. *Dis Aquat Org* 32:137–143

*Editorial responsibility: Wolfgang Körting,  
Hannover, Germany*

*Submitted: July 10, 2001; Accepted: March 6, 2002  
Proofs received from author(s): July 9, 2002*