

Molecular analysis of a haplosporidian parasite from cultured New Zealand abalone *Haliotis iris*

Kimberly S. Reece*, Nancy A. Stokes

School of Marine Science, Virginia Institute of Marine Science, College of William and Mary, Gloucester Point, Virginia 23062, USA

ABSTRACT: In the Austral summer and autumn of 2000 and 2001, mortalities of black-footed abalone *Haliotis iris* (Martyn, 1784) occurred in a commercial facility in New Zealand. Histological analyses suggested that infection by a haplosporidian parasite was responsible. To confirm identification as a haplosporidian and to help determine if this parasite represented a new, undescribed species, DNA was extracted from infected host tissues scored as positive for infection by histological examination. Small-subunit rRNA (SSU rRNA) gene sequences from both the host abalone and a parasitic organism were amplified by PCR and characterized. Although the sequence for this parasite was novel, not matching any known SSU rRNA gene sequences, phylogenetic analyses strongly supported grouping this parasite with the haplosporidians. Parsimony analyses placed the parasite at the base of the phylum Haplosporidia, ancestral to *Urosporidium crescens* and the *Haplosporidium*, *Bonamia*, and *Minchinia* species. Sequencing of multiple parasite DNA clones revealed a single polymorphic site in the haplosporidian SSU rRNA gene sequence.

KEY WORDS: Haplosporidian · Abalone · SSU rDNA · Parasite · Molecular phylogenetic

Resale or republication not permitted without written consent of the publisher

INTRODUCTION

Black-footed abalone *Haliotis iris* (Martyn, 1784), locally known as paua, is a valuable shellfish for both recreational and commercial fisheries in New Zealand. Due to demand that exceeds the 1400 t annual limit on commercial fisheries catches (Annala et al. 2000), there has been increased interest in aquaculture of this species. A primary concern for growers of aquaculture species is disease management. Virulent pathogens of both cultured and wild abalone have been found around the world. A *Rickettsia*-like bacterial species was identified as the agent of withering disease in abalone *Haliotis* spp. on the west coast of the United States (Gardner et al. 1995, Friedman et al. 2000) and amyotrophy of Japanese black abalone *Nordotis discus discus* is thought to be due to a virus (Nakatsugawa et al. 1999). Protozoan parasites of the genus *Perkinsus* have been found in both greenlip *Haliotis laevigata* and blacklip abalone *H. rubra* from Australia (Lester & Davis 1981, Goggin & Lester 1995). The only formally described disease to date of *H. iris* is report-

edly caused by a fungal pathogen (Grindley et al. 1998).

Haplosporidians are protozoan parasites found in invertebrates around the world in both marine and freshwater environments. Many species are pathogens of commercially important mollusks, affecting both wild and hatchery populations. *Urosporidium crescens*, a hyperparasite of a trematode found in the American blue crab *Callinectes sapidus*, causes unappealing dark blemishes in the meat referred to as pepper crab disease. Although not harmful to the crabs or to humans who consume them, pepper crab disease has economic impacts on the seafood industry (Perkins 1971). *Haplosporidium nelsoni* is the agent of the highly pathogenic MSX disease in the eastern oyster *Crassostrea virginica*. This haplosporidian was evidently introduced to the east coast of the USA by importation of infected Pacific oysters (Burrison et al. 2000) and has had devastating effects on wild oyster populations and hampered oyster aquaculture development in the region (Andrews 1966, Ford & Haskin 1982). *Haplosporidium costale*, the agent of SSO dis-

*Email: kreece@vims.edu

ease, is morphologically similar to *H. nelsoni* and has been responsible for mortalities of eastern oysters in seaside embayments of the US mid-Atlantic coast (Andrews et al. 1962). *Bonamia ostreae*, pathogenic in the European flat oyster *Ostrea edulis*, has devastated the flat oyster industry in Western Europe. Katkansky et al. (1969) reported a 'microcell' parasite that resembled *B. ostreae* in *O. edulis* from California. Elston et al. (1986) later traced *B. ostreae* in France to importation of oysters from California. More recently, this parasite was also found on the east coast of the United States (Friedman & Perkins 1994), presumably by introductions of infected *O. edulis* from the west coast. *Bonamia exitiosus*, morphologically similar to *B. ostreae*, is pathogenic to the dredge oyster *Ostrea chilensis* in New Zealand (Hine 1991, Hine et al. 2001). Both species of *Bonamia* were tentatively considered haplosporidians despite the apparent absence of sporulation during their life cycles (Pichot et al. 1980, Hine & Wesney 1992, Hine et al. 2001) and molecular evidence has recently confirmed their inclusion in the phylum Haplosporidia (Carnegie et al. 2000, Cochenec et al. 2000).

Histological examination of cultured abalone from a New Zealand aquaculture facility experiencing mortalities suggested the presence of a haplosporidian parasite, although no spores were observed (Hine et al. 2002, Diggles et al. 2002). Molecular genetic analysis was performed using SSU rDNA obtained from infected abalone to further characterize this organism.

MATERIALS AND METHODS

DNA isolation and PCR amplification. DNA was isolated from epipodium tissue of 5 infected *Haliotis iris* individuals (2 animals received in September 2000 and 3 animals received in February 2001) using the protocol for animal tissues of the DNeasy tissue kit (Qiagen). Initially, genomic DNA was amplified by PCR with universal primers for the small-subunit rRNA (SSU rRNA) gene (Medlin et al. 1988), with the polylinker bases removed and primers then designated as 16S-A and 16S-B. Reaction conditions and amplification parameters were as previously described, except that 400 ng μl^{-1} bovine serum albumin was added to the reaction mixtures (Stokes et al. 1995). PCR amplification was also attempted using PCR primers (HAP primer set; Renault et al. 2002) that were previously designed to amplify a wide range of haplosporidian species (Renault et al. 2000). In addition, PCR amplification was attempted using a primer designed to target a SSU rRNA gene sequence that was common to *Urosporidium crescens* and an undescribed spot prawn parasite (Reece et al. 2000). This primer (UroComp280SSU, 5'-

GCCATGCGATCCGAACARTTA-3') was used in conjunction with the universal primer 16S-A (Medlin et al. 1988). PCR conditions were the same for amplification with primers 16S-A and 16S-B. After partial sequences were obtained for the parasite, specific internal primers were designed in order to complete the SSU rRNA gene sequence. These primers, NZAH-F4 (5'-ATTTGGTTTACTATCGGAATGAGAAC-3') and NZAH-R1 (5'-CTGTAGAGATGATTGACCTGATTG-3'), were paired with the universal primers 16S-B and 16S-A, respectively. PCR reaction mixtures were the same for primers 16S-A and 16S-B, except that the buffer for 16S-A + NZAH-R1 was 60 mM Tris-HCl, pH 9.0, 15 mM $(\text{NH}_4)_2\text{SO}_4$, 2 mM MgCl_2 (Buffer F, Invitrogen Life Technologies). Cycling parameters with the parasite-specific primers were as follows: an initial denaturation of 4 min at 94°C followed by 35 cycles of 30 s at 94°C, then 30 s at 53°C for NZAH-F4 + 16S-B, or 59°C for 16S-A + NZAH-R1, 1.5 min at 72°C and a final extension of 5 min at 72°C in a Perkin Elmer GeneAmp 9600 thermal cycler (Applied Biosystems) or a TGradient thermal cycler (Biometra). All amplifications were done with 10 to 50 ng of genomic DNA in 25 μl reactions and checked by agarose gel electrophoresis for the presence of PCR products.

DNA sequencing. Amplified products were cloned into a plasmid vector PCR2.1 using the TA cloning kit (Invitrogen Life Technologies) following the manufacturer's protocol. The cloned DNA inserts were sequenced on an automated sequencer by simultaneous bi-directional cycle-sequencing using the Thermo Sequenase sequencing kit (Amersham Life Science) and M13 forward and reverse infrared-labeled primers (LI-COR) following the manufacturer's protocol. Sequencing reactions were electrophoresed and detected on a LI-COR automated sequencer (Model 4200L).

Phylogenetic analyses. SSU rRNA gene sequences were subjected to BLAST searches (Altschul et al. 1990) of the National Center for Biotechnology Information (NCBI) GenBank database to determine whether they were of host or parasite origin. Sequences were aligned for pairwise distance comparisons and phylogenetic analysis using the CLUSTAL-W algorithm (Thompson et al. 1994) in the MacVector 7.0 DNA sequence analysis software package (Oxford Molecular) using a variety of open- and extend-gap penalties in the ranges of 4 to 20 and 2 to 10, respectively. The alignments were compared to secondary structure based alignments of a subset of sequences performed at the Ribosomal Database Project II website (see <http://rdp.cme.msu.edu/html/>, Maidak et al. 2001). It was noted that in the SSU rDNA sequences, there were large inserted regions for a few of the included taxa, which confounded alignment. Therefore, these regions, constituting a total of 254 sites,

were removed from the analysis. Final analysis was conducted on an alignment of 2345 sites generated with open-gap penalties of 8 and 7 and extend-gap penalties of 3 and 2 for the pairwise and multiple alignment phases, respectively. Parsimony jackknife analysis with 100 random additions of 100 jackknife replicates and determination of the uncorrected ('p') distances were performed using PAUP*4b8.0 (Swofford 2001). The protistan and invertebrate sequences included in the analysis, along with their respective GenBank accession numbers, are listed in Table 1.

RESULTS AND DISCUSSION

Using the primers 16S-A and UroComp280SSU, a small DNA fragment (226 bp, excluding primer sequences) was amplified from genomic DNA isolated from epipodium tissue of the first 2 parasite-infected individuals. In a BLAST search of GenBank, this fragment most closely matched the SSU rRNA gene

sequences of *Urosporidium crescens* and *Haplosporidium nelsoni*. This fragment was presumed to be from parasite DNA. No PCR product was obtained using the general haplosporidian HAP primers for amplification. These primers are useful for amplification of SSU rDNA from most organisms in the genera *Bonamia*, *Haplosporidium*, and *Minchinia*, but not for phylogenetically basal haplosporidians such as *Urosporidium*. Initially, only abalone sequences were amplified by PCR with the universal SSU rRNA gene primers on DNA from these individuals, as well as with DNA from 3 other infected hosts. Subsequently, we obtained epipodium tissue samples from 3 additional infected individuals and again did PCR with the universal primers in an attempt to obtain a nearly full-length SSU rRNA gene sequence for the parasite. Although most nearly full-length clones were found to contain abalone DNA fragments (10 of 12 clones sequenced), 2 clones contained a haplosporidian-like SSU rRNA gene sequence. The nearly full-length sequence revealed that there were 3 nucleotide differences between the Uro-

Table 1. Taxa included in phylogenetic analysis, and the GenBank accession numbers (acc. no.) of their small-subunit rRNA (SSU rRNA) gene sequences. The New Zealand abalone parasite and *Haliotis iris* sequences done for this study are shown in **bold**

Taxon	SSU rRNA gene GenBank acc. no.	Taxon	SSUrRNA gene GenBank acc. no.
<i>Bonamia ostreae</i>	AF192759	<i>Perkinsus atlanticus</i>	AF140295
<i>Bonami ostreae</i>	AF262995	<i>Perkinsus chesapeaki</i>	AF042707
<i>Bonamia exitiosus</i>	AF337563	<i>Hematodinium</i> sp.	AF286023
<i>Minchinia teredinis</i>	U20319	<i>Amphidinium carterae</i>	AF009217
<i>Haplosporidium nelsoni</i>	U19538	<i>Pfiesteria piscicida</i>	AF077055
<i>Haplosporidium costale</i>	AF387122	<i>Prorocentrum minimum</i>	Y16238
<i>Haplosporidium louisiana</i>	U47851	<i>Alexandrium fundyense</i>	U09048
<i>Urosporidium crescens</i>	U47852	<i>Gonyaulax spinifera</i>	AF052190
NZ abalone parasite	AF492442	<i>Symbiodinium corcolorum</i>	L13717
<i>Chondrus crispus</i>	Z14140	<i>Euplotes crassus</i>	AY007438
<i>Fucus distichus</i>	M97959	<i>Oxytricha nova</i>	X03948
<i>Ochromonas danica</i>	M32704	<i>Oxytricha trifallax</i>	AF164121
<i>Achlya bisexualis</i>	M32705	<i>Entodinium caudatum</i>	U57765
<i>Phytophthora megasperma</i>	X54265	<i>Frontonia vernalis</i>	U97110
<i>Labyrinthula</i> sp.	AB022105	<i>Paramecium tetraurelia</i>	X03772
QPX	AF261664	<i>Tetrahymena pyriformis</i>	M98021
<i>Ulkenia profunda</i>	L34054	<i>Tetrahymena thermophila</i>	X56165
<i>Pneumocystis carinii</i>	S83267	<i>Dictyostelium discoideum</i>	X00134
<i>Ajellomyces capsulatus</i>	Z75307	<i>Entamoeba histolytica</i>	X65163
<i>Neurospora crassa</i>	X04971	<i>Tritrichomonas foetus</i>	M81842
<i>Kluyveromyces lactis</i>	X51830	<i>Naegleria fowleri</i>	U80059
<i>Saccharomyces cerevisiae</i>	J01353	<i>Physarum polycephalum</i>	X13160
<i>Candida glabrata</i>	X51831	<i>Trypanosoma cruzi</i>	X53917
<i>Emiliania huxleyi</i>	M87327	<i>Euglena gracilis</i>	M12677
<i>Chlamydomonas reinhardtii</i>	M32703	<i>Encephalitozoon cuniculi</i>	L17072
<i>Nitella flexilis</i>	U05261	<i>Vairimorpha necatrix</i>	Y00266
<i>Acanthamoeba palestinensis</i>	L09599	<i>Giardia lamblia</i>	M54878
<i>Babesia bovis</i>	L19078	<i>Diodora graeca</i>	AF120513
<i>Theileria parva</i>	L02366	<i>Batillus cornutus</i>	AF165311
<i>Eimeria tenella</i>	U40264	<i>Monodonta labio</i>	X94271
<i>Sarcocystis hominis</i>	AF006470	<i>Nordotis discus</i>	AF082177
<i>Toxoplasma gondii</i>	U03070	<i>Haliotis iris</i>	AF492441
<i>Perkinsus marinus</i>	AF042708	<i>Crassostrea virginica</i>	X60315

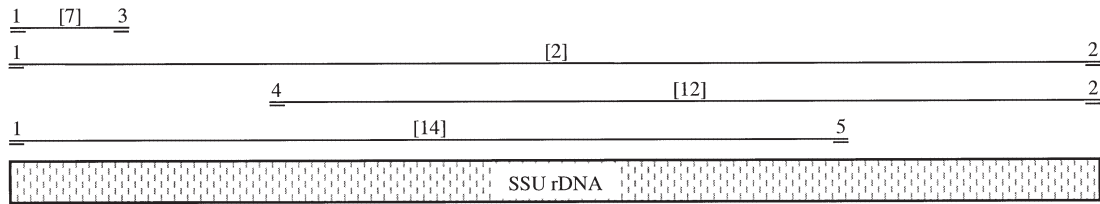


Fig. 1. Locations of PCR primers on the small-subunit rRNA (SSU rRNA) gene, with number of haplosporidian clones sequenced for each PCR product indicated in square brackets. Primers indicated are: (1) 16S-A; (2) 16S-B; (3) UroComp280SSU; (4) NZAH-F4; (5) NZAH-R1

Comp280SSU primer that was successfully used to amplify the parasite DNA, initially and the actual sequence of the SSU rDNA. The differences were at positions 2, 15 and 16 in the 21 bp primer length and evidently did not affect the ability of the primer to successfully bind to the parasite SSU rDNA targeted region under the PCR reaction conditions used for the 16S-A and UroComp280SSU amplification. Based on the sequence of these 2 nearly full-length clones, primers specific to the abalone parasite SSU rDNA were designed (NZAH-F4 and NZAH-R1). These primers were used in PCR to obtain additional amplification products that were cloned and sequenced to complete and confirm the parasite SSU rRNA gene sequence. Overall, 35 clones of various PCR fragments from the 5 infected abalone were sequenced and found to contain haplosporidian-like sequences (Fig. 1).

The SSU rRNA gene fragment presumed to be from the parasite was 1967 bp in length after removal of the primer sequences (GenBank Accession No. AF492442). A single polymorphic site with either an A or G at Position 605 was detected; however, most of the sequences had G at this position. Both variants of the sequence were isolated from a single host. GenBank-deposited haplosporidian SSU rDNA sequences ranged in length from 1702 bp for *Haplosporidium louisiana* to 1831 bp for *Urosporidium crescens*. Uncorrected ('p') pairwise distances were calculated for all haplosporidian sequences and the abalone parasite sequence, following alignment and removal of ambiguously aligned regions. For previously deposited GenBank haplosporidian sequences, pairwise distances ranged from 0.018 to 0.252. The greatest distance was observed between *U. crescens* and *H. louisiana* ('p' = 0.252), while the *Bonamia ostreae* and *B. exitiosus* sequences were most similar ('p' = 0.018). The pairwise distances between the abalone parasite SSU rDNA sequence and the haplosporidian sequences ranged from 0.123 to 0.252. The parasite SSU rRNA gene sequence was most similar to that of *U. crescens* ('p' = 0.123), and the greatest distance was observed between the parasite and *H. louisiana* ('p' = 0.252).

Parsimony analysis of host and protistan SSU rRNA gene sequences was conducted to examine the taxonomic affinities of this abalone parasite. The gene sequences of many marine parasites such as parasitic dinoflagellates, labyrinthulomycetes, *Perkinsus* species and haplosporidians were included in the analysis (Table 1). Of 2345 sites in the aligned sequences, 1215 were parsimony-informative. Parsimony jackknife analysis grouped the parasite sequence obtained in this study with a monophyletic haplosporidian clade with 98% support (Fig. 2). The black-footed abalone parasite fell at the base of the Haplosporidia, grouping with *Urosporidium crescens*. The phylogenetic analysis suggested that *Haplosporidium*, *Minchinia* and *Bonamia* species were all more recently evolved taxa within the phylum. The haplosporidian sequences, however, did not group with alveolate sequences in this study, as reported in earlier molecular phylogenetic analyses (Siddall et al. 1995, Flores et al. 1996). In addition, the gene sequence that was presumed to be from the black-footed abalone genome grouped with gastropod SSU rRNA gene sequences (GenBank Accession No. AF492441).

Overall, the molecular analyses presented here strongly supported previous morphological and ultrastructural observations (Hine et al. 2002, Diggles et al. 2002), which suggested that the parasite found in the New Zealand black-footed abalone was a haplosporidian. The SSU rRNA gene sequence data indicated that this parasite was a basal member of the phylum Haplosporidia, as it grouped with the haplosporidians at the base of the clade in phylogenetic analysis. This result was consistent with the ultrastructural characteristics of haplosporidians identified in this parasite, such as multinucleate plasmodia, mitochondria with tubular cristae, anastomosing endoplasmic reticulum, and haplosporosome-like bodies produced from nuclear membrane-bound Golgi that matured to haplosporosomes (Hine et al. 2002). Additionally, *in situ* hybridisation using a DNA probe designed to detect SSU rRNA of *Bonamia ostreae* exhibited 'moderately strong reactions' with plasmodia of this parasite (Diggles et al. 2002). To date, spores have not been successfully isolated and characterized

(B. Diggles & P. M. Hine pers. comm.). Scanning electron microscope analysis of spores, if available, as well as molecular phylogenetic analyses on other gene se-

quences, would help to determine whether this parasite is a member of an existing genus or should be assigned to a new genus in the phylum Haplosporidia.

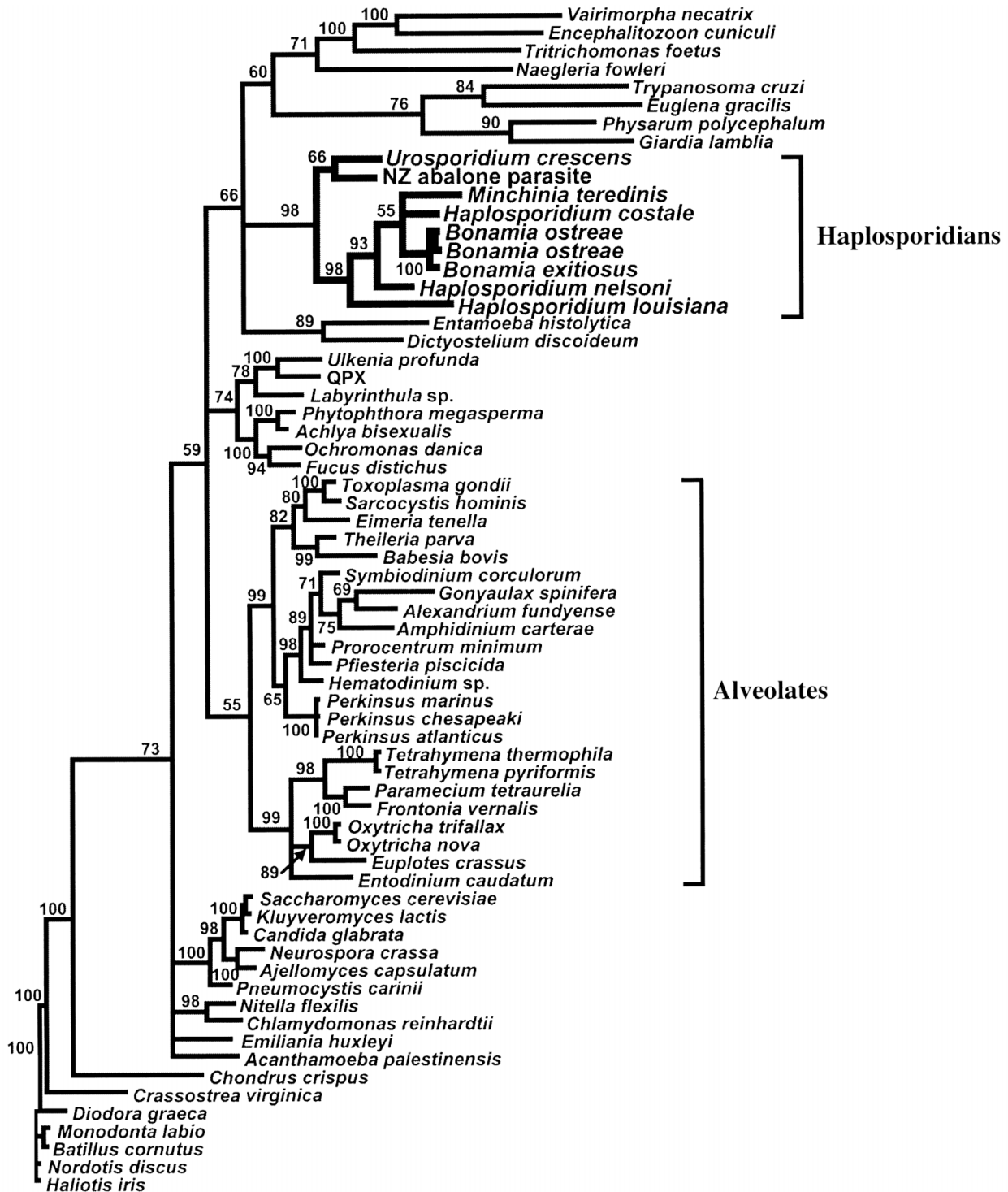


Fig. 2. Parsimony jackknife tree generated based on the near complete small-subunit rDNA (SSU rDNA) sequences. Jackknife support values above 50 are shown on branches. Analysis was done with 100 jackknife replicates of 100 random additions and gaps were treated as missing data

Acknowledgements. The authors thank Ben Diggles and Carolyn Friedman for infected abalone samples, Kathleen Apakupakul for technical assistance and Eugene Burreson, Ben Diggles and Mike Hine for critical review of the manuscript. VIMS contribution number 2478.

LITERATURE CITED

- Altschul SF, Gish W, Miller W, Myers EW, Lipman DJ (1990) Basic local alignment search tool. *J Mol Biol* 215:403–410
- Andrews JD (1966) Oyster mortality studies in Virginia. V. Epizootiology of MSX, a protistan pathogen of oysters. *Ecology* 47:19–31
- Andrews JD, Wood JL, Hoese HD (1962) Oyster mortality studies in Virginia. III. Epizootiology of a disease caused by *Haplosporidium costale* Wood and Andrews. *J Insect Pathol* 4:1327–343
- Annala JH, Sullivan KJ, O'Brien CJ (2000) Report from the Fishery Assessment Plenary, May 2000: stock assessments and yield estimates. Ministry of Fisheries report, National Institute of Water and Atmospheric Research library, Wellington
- Burreson EM, Stokes NA, Friedman CS (2000) Increased virulence in an introduced pathogen: *Haplosporidium nelsoni* (MSX) in the eastern oyster *Crassostrea virginica*. *J Aquat Anim Health* 12:1–8
- Carnegie RB, Barber BJ, Culloty SC, Figueras AJ, Distel DL (2000) Development of a PCR assay for detection of the oyster pathogen *Bonamia ostreae* and support for its inclusion in the Haplosporidia. *Dis Aquat Org* 42:199–206
- Cochennec N, Le Roux F, Berthe F, Gerard A (2000) Detection of *Bonamia ostreae* based on small subunit ribosomal probe. *J Invertebr Pathol* 76:26–32
- Diggles BK, Nichol J, Hine PM, Wakefield S, Cochennec-Laureau N, Roberts RD, Friedman CS (2002) Pathology of cultured paua *Haliotis iris* infected with a novel haplosporidian parasite, with some observations on the course of disease. *Dis Aquat Org* 50:219–231
- Elston RA, Farley CA, Kent ML (1986) Occurrence and significance of bonamiasis in European flat oysters *Ostrea edulis* in North America. *Dis Aquat Org* 2:49–54
- Flores BS, Siddall ME, Burreson EM (1996) Phylogeny of the Haplosporidia (Eukaryota: Alveolata) based on small subunit ribosomal RNA gene sequence. *J Parasitol* 82: 616–623
- Ford SE, Haskin HH (1982) History and epizootiology of *Haplosporidium nelsoni* (MSX), an oyster pathogen in Delaware Bay, 1957–1980. *J Invertebr Pathol* 40:118–141
- Friedman CS, Perkins FO (1994) Range extension of *Bonamia ostreae* to Maine, USA. *J Invertebr Pathol* 64:179–181
- Friedman CS, Andree KB, Beauchamp KA, Moore JD, Robbins TT, Shields JD, Hedrick RP (2000) 'Candidatus *Xenohaliotis californiensis*', a newly described pathogen of abalone, *Haliotis* spp., along the west coast of North America. *Int J Syst Evol Microbiol* 50:847–855
- Gardner GR, Harshbarger JC, Lake JL, Sawyer TK, Price KL, Stephenson MD, Haaker PL, Togstad HA (1995) Association of prokaryotes with symptomatic appearance of withering syndrome in black abalone *Haliotis cracherodii*. *J Invertebr Pathol* 66:111–120
- Goggin CL, Lester RJG (1995) *Perkinsus*, a protistan parasite of abalone in Australia: a review. *Mar Freshw Res* 46: 639–646
- Grindley RM, Keogh JA, Friedman CS (1998) Shell lesions in New Zealand *Haliotis* sp. (Mollusca, Gastropoda). *J Shellfish Res* 17:805–811
- Hine PM (1991) Ultrastructural observations on the annual infection pattern of *Bonamia* sp. in flat oysters *Tiostrea chilensis*. *Dis Aquat Org* 11:163–171
- Hine PM, Wesney B (1992) Interrelationships of cytoplasmic structures in *Bonamia* sp. (Haplosporidia) infecting oysters *Tiostrea chilensis*: an interpretation. *Dis Aquat Org* 14: 59–68
- Hine PM, Cochennec-Laureau N, Berthe FCJ (2001) *Bonamia exitiosus* n. sp. (Haplosporidia) infecting flat oysters *Ostrea chilensis* in New Zealand. *Dis Aquat Org* 47:63–72
- Hine PM, Wakefield S, Diggles BK, Webb VL, Maas EW (2002) The ultrastructure of a haplosporidian containing Rickettsiae, associated with mortalities among cultured paua *Haliotis iris*. *Dis Aquat Org* 49:207–219
- Katkansky SC, Dahlstrom WA, Warner RW (1969) Observations on survival and growth of the European flat oyster, *Ostrea edulis*, in California. *Calif Fish Game* 55:69–74
- Lester RJG, Davis GHG (1981) A new *Perkinsus* species (Apicomplexa, Perkinsea) from the abalone *Haliotis ruber*. *J Invertebr Pathol* 37:181–187
- Maidak BL, Cole JR, Lilburn TG, Parker CT Jr and 6 others (2001) The RDP-II (Ribosomal Database Project). *Nucleic Acids Res* 29:173–174
- Medlin L, Elwood HJ, Stickel S, Sogin ML (1988) The characterization of enzymatically amplified eukaryotic 16S-like rRNA-coding proteins. *Gene* 71:491–499
- Nakatsugawa T, Nagai T, Hiya K, Nishizawa T, Muroga K (1999) A virus isolated from juvenile black abalone *Nordotis discus discus* affected with amyotrophy. *Dis Aquat Org* 36:159–161
- Perkins FO (1971) Sporulation in the trematode hyperparasite *Urosporidium crescens* De Turk, 1940 (Haplosporidia: Haplosporidiidae) an electron microscope study. *J Parasitol* 57:9–23
- Pichot Y, Comps M, Tige G, Grizel H, Rabouin MA (1980) Recherches sur *Bonamia ostreae* gen. n., sp. n., parasite nouveau de l'huître plate *Ostrea edulis* L. *Rev Trav Inst Pech Marit* 43:131–140
- Reece KS, Burreson EM, Bower SM, Dungan CF (2000) Molecular analyses of a parasite in prawns (*Pandalus platyceros*) from British Columbia, Canada. *J Shellfish Res* 19: 647
- Renault T, Stokes NA, Chollet B, Cochennec N, Berthe F, Burreson EM (2000) Haplosporidiosis in the Pacific oyster, *Crassostrea gigas*, from the French Atlantic coast. *Dis Aquat Org* 42:207–214
- Siddall ME, Stokes NA, Burreson EM (1995) Molecular phylogenetic evidence that the phylum Haplosporidia has an alveolate ancestry. *Mol Biol Evol* 12:573–581
- Stokes NA, Siddall ME, Burreson EM (1995) Detection of *Haplosporidium nelsoni* (Haplosporidia: Haplosporidiidae) in oysters by PCR amplification. *Dis Aquat Org* 23: 145–152
- Swofford DL (2001) PAUP*: phylogenetic analysis using parsimony (*and other methods), Version 4. Sinauer Associates, Sunderland, MA
- Thompson JD, Higgins DG, Gibson TJ (1994) Improving the sensitivity of progressive multiple sequence alignment through sequence weighting, position-specific gap penalties and weight matrix choice. *Nucleic Acids Res* 22: 4673–4680