

NOTE

First reported outbreak of severe spirorchiidiasis in *Emys orbicularis*, probably resulting from a parasite spillover event

Raúl Iglesias^{1,*}, José M. García-Estévez¹, César Ayres², Antonio Acuña³, Adolfo Cordero-Rivera⁴

¹Laboratorio de Parasitología, Facultad de Biología, Campus Lagoas-Marcosende, Universidad de Vigo, 36310 Vigo, Spain

²AHE (Asociación Herpetológica Española), Apartado de correos 191, 28911 Leganés, Madrid, Spain

³Veterinary surgeon, OAM Parque das Ciencias Vigozoo, A Madroa, Teis 36316, Vigo, Spain

⁴Evolutionary Ecology Group, Dept. Ecology and Animal Biology, EUE Forestal, Campus Universitario A Xunqueira s/n, University of Vigo, 36005 Pontevedra, Spain

ABSTRACT: The importance of disease-mediated invasions and the role of parasite spillover as a substantial threat to the conservation of global biodiversity are now well known. Although competition between invasive sliders *Trachemys scripta elegans* and indigenous European turtles has been extensively studied, the impact of this invasive species on diseases affecting native populations is poorly known. During winter 2012–2013 an unusual event was detected in a population of *Emys orbicularis* (Linnaeus, 1758) inhabiting a pond system in Galicia (NW Spain). Most turtles were lethargic and some had lost mobility of limbs and tail. Necropsies were performed on 11 turtles that were found dead or dying at this site. Blood flukes belonging to the species *Spirorchis elegans* were found inhabiting the vascular system of 3 turtles, while numerous fluke eggs were trapped in the vascular system, brain, lung, heart, liver, kidney, spleen, and/or gastrointestinal tissues of all necropsied animals. Characteristic lesions included miliary egg granulomas, which were mostly found on serosal surfaces, particularly of the small intestine, as well as endocarditis, arteritis, and thrombosis. The most probable cause of death in the 3 turtle specimens which were also examined histologically was a necrotic enteritis with secondary bacterial infection associated with a massive egg embolism. The North American origin of *S. elegans*, the absence of prior recorded epizootics in the outbreak area, and the habitual presence of its type host, the highly invasive red-eared slider, in this area suggest a new case of parasite spillover resulting in a severe emerging disease.

KEY WORDS: *Emys orbicularis* · Blood flukes · *Spirorchis* · Spirorchidiiasis · Mortality · Parasite spillover · *Trachemys scripta*

— Resale or republication not permitted without written consent of the publisher —

INTRODUCTION

Besides habitat destruction, the introduction of non-indigenous species, especially those that become invasive species, is one of the most important problems for the conservation of biodiversity (Simberloff & Rejmanek 2011), since they can impact indigenous species through predation, competition, and/or disease transmission. The transmission of dis-

eases from exotic to native species, and the impact of those new diseases upon natives, is relatively well-known in vertebrate groups such as amphibians (Fisher & Garner 2007, Kolby et al. 2014) and fish (Uchii et al. 2013, Hein et al. 2014). Lymbery et al. (2014) defined co-introduced parasites as those transported with an alien host to a new area and co-invading parasites as those co-introduced and then transmitted to native hosts.

In this sense, competition between the red-eared slider *Trachemys scripta elegans* (Wied, 1838), which is included in the 20 worst invasive species in Spain (GEIB 2006), and the autochthonous turtles *Emys orbicularis* (Linnaeus, 1758) and *Mauremys leprosa* (Schweigger, 1812) has been extensively studied (Cadi & Joly 2003, 2004, Polo-Cavia 2009). In contrast, although the importance of disease-mediated invasions and the role of parasite spillover/spillback as a substantial threat to the conservation of global biodiversity have recently been highlighted (Smith et al. 2006, 2009, Peeler et al. 2011, McCallum 2012, Strauss et al. 2012), the impact of alien sliders on diseases affecting indigenous European turtles is poorly known.

E. orbicularis is found in East and Central Europe, the Mediterranean countries (including some islands), and North Africa (Fritz 2001, 2003). At present, this species is threatened and declining in several regions of its range, mainly due to habitat destruction. It is therefore included in the Bern Convention and protected by European Union laws. However, it is still listed as a lower risk/near threatened species in the IUCN Red List, although its status needs updating (IUCN 2013). It has been proposed that populations from northwest Spain and from the Levant should be considered 'Critically Endangered' (CR) (Keller & Andreu 2002). Recent studies even suggest that this category, as it has recently been applied in the particular case of Galicia (NW Spain), should also be applied nationally, due to the decrease in the area occupied by the species in recent years (Ayres 2009).

Here, we report on an outbreak of severe spirorchidiasis affecting *E. orbicularis* caused by the blood fluke *Spirorchis elegans*. The North American origin of this digenean species, the habitual presence of its type host *T. s. elegans* in the area where the outbreak was detected, and the fact that, although turtles' health has been periodically monitored in this area over the last few years, similar epizootics or spirorchiid eggs were never detected (Segade et al. 2006) suggest a probable parasite spillover the impact of which on native populations should be a cause of concern.

MATERIALS AND METHODS

In December 2012 unusual winter activity was detected in a population of *Emys orbicularis* inhabiting the

Centeáns ponds (42°7'N, 8°38'W) at the Gándaras de Budiño e Ribeiras do Louro wetlands (Galicia, NW Spain). Most of the turtles were found on land, lethargic, and some had lost mobility of limbs and tail. The first dead turtle was detected on 27 December, floating in one of the ponds. Ten additional turtles were found dead or dying between January and May 2013.

Necropsies were performed on all turtles after natural death. They were examined macroscopically, looking for eggs and adult parasites. The organs of 3 turtles were also examined histologically by an expert pathologist who was hired by Dirección Xeral de Conservación da Natureza (Xunta de Galicia). Blood flukes were collected by flushing saline through the heart and adjacent vascular system, fixed in Bouin's solution under light coverslip pressure, stained with Semichon's acetocarmine, cleared in clove oil, and mounted in Canada balsam. Fluke eggs were recovered from macerated intestinal tissues, and faecal contents of severely infected turtles were collected, fixed in 10% formalin, and measured microscopically. Fluke and egg measurements were made according to Platt (1993). Photographs were taken using an Olympus DP11 digital camera. All drawings were prepared with the aid of a camera lucida.

In order to estimate the status of *Spirorchis* infection in all populations of *E. orbicularis* inhabiting Galician wetlands, 84 specimens were captured by net in Centeáns (outbreak area) and Orbenlle ponds (Gándaras de Budiño e Ribeiras do Louro wetland), in the Arnoia and Avia Rivers, and in Corrubedo Natural Park (Table 1). Turtles were housed individually in plastic containers, transported to the laboratory, and maintained for 24–72 h. Faeces were collected immediately after defecation, fixed in 10% formalin, and examined for *Spirorchis* spp. eggs using standard sedimentation techniques. To increase the sensitivity of faecal examination, 3 stool samples were analyzed from each turtle. All turtles were released back to their original population after sample collection.

Table 1. Faecal prevalence of spirorchiid eggs in all Galician populations of *Emys orbicularis*

Population	Turtles screened (n)	Positive for eggs (n)	Prevalence (%)
Centeáns ponds (Gándaras de Budiño) ^a	21	10	47.6
Orbenlle pond (Gándaras de Budiño)	10	1	10
Arnoia River	21	0	0
Avia River	22	2	9.1
Corrubedo Natural Park	10	0	0
^a Outbreak zone			

RESULTS

A number of gross pathological changes were observed in all necropsied turtles but were considered non-specific findings. They included cachexia, ascites, cardiovascular lesions, enteritis, necrotic material into intestinal lumen, petechiae, and ulcerated lesions on the gastrointestinal surface.

The most significant findings, when the animals were examined microscopically, were the presence of numerous dark brown digenean eggs in the vascular system and tissues of the brain, lungs, heart, liver, kidney, spleen, and/or gastrointestinal tract (Fig. 1a,b). Characteristic lesions included miliary egg granulomas, which were observed most readily on serosal surfaces, particularly of the small intestine. Cardiovascular lesions included endocarditis, arteritis, and thrombosis. The most probable cause of death in the 3 specimens which were examined histologically by an expert veterinary pathologist was a necrotic enteritis with secondary bacterial infection resulting from a massive egg embolism (X. de Galicia unpubl. results).

Eggs were laid by blood flukes, which were found inhabiting the cardiovascular system of *Emys orbicularis*. Mature flukes were only recovered from 3 turtles (up to 6 digeneans host⁻¹) despite the fact that trapped eggs were detected in all necropsied turtles. Description of trematodes (Fig. 1c,d) is as follows: body slightly fusiform, 2352 ± 282 (SD) (1800–2760) μm in length, with a length/width ratio of 4.2 ± 0.4 (3.6–4.8); tegument unspined; oral sucker small, $60\text{--}102 \times 42\text{--}75$ μm ; acetabulum absent; oesophagus surrounded by glandular tissue, slightly sinuous, with radial outpocketings along most of its length and a plicate organ near caecal bifurcation; anterior end-caecal bifurcation distance $350\text{--}540$ μm (16.9–20.7% of total length); caeca inflated and slightly sinuous, containing dark residues of digesting blood and terminating $100\text{--}137$ μm from the posterior end (3.9–5.8% of total length); median oesophageal pouch apparently absent; testes 8–10 (typically 9), preovarian,

arranged in a linear series in the intercaecal area; anterior testis $60\text{--}300$ μm posterior to caecal bifurcation; posterior testis contiguous to seminal vesicle; cirrus sac $80\text{--}152$ μm long \times $22\text{--}42$ μm wide, weakly muscular, running posteriad from seminal vesicle and sinistral to ovary; genital pore $255\text{--}450$ μm from posterior end (14.2–18.8% of total length); opens ventrally over left caecum; ovary elongate, post-testicular, slightly multilobed, intercaecal, dextral to cirrus sac in posterior one-fourth of body; uterus short, containing a single egg; vitellaria small, irregular follicles, located lateral to caeca from posterior portion of oesophagus anteriorly, to posterior end of caeca; some in intercaecal space; vitelline reservoir pouch-like, slightly posterior to uterus; excretory bladder a

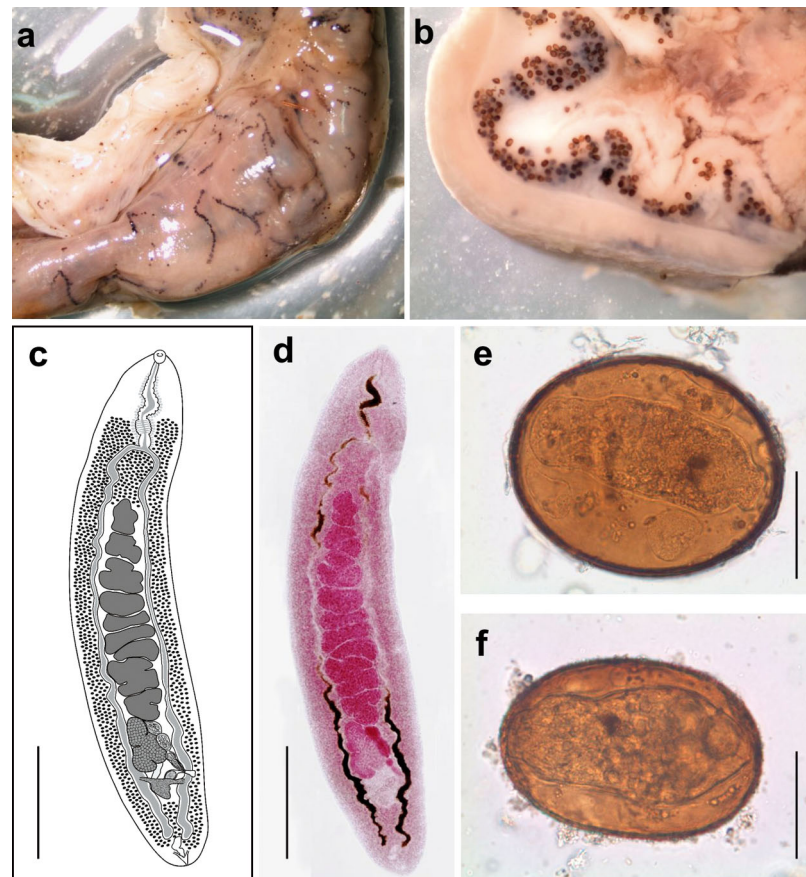


Fig. 1. (a,b) Appearance of intestinal tissues from a *Spirorchis*-infected *Emys orbicularis* turtle and (c–f) adults and mature eggs of *Spirorchis* species found in the vascular system of this host species. (a) External surface of the intestinal tract showing the dark lines formed by the accumulation of trematode eggs in the serosal vascular system. (b) Gross cross-section of intestine with numerous eggs concentrated in the submucosal tissues. (c) Schematic drawing and (d) photograph of mature *S. elegans* flukes showing 9 testes (dark grey in c and red in d) arranged in a linear series in the intercaecal region. Note the absence of a postovarian testis. Two mature miracidium-containing eggs obtained from (e) intestinal tissues and (f) faeces of infected turtles. Scale bars = 500 μm (c,d); 50 μm (e,f)

short-stemmed Y with tubular, median accessory vesicle (Manter's organ) small, not extending into intercaecal space; operculate embryonated eggs (containing miracidium) from intestinal tissues are oval to ellipsoidal, light to dark brown in appearance, thin-shelled, and measure 127 ± 6 (122 – 137) \times 106 ± 6 (100 – 117) μm , while mature eggs from faeces are slightly smaller measuring 110 ± 9.9 (85 – 135) \times 82.4 ± 8.2 (62.5 – 100) μm (Fig. 1e,f).

The coprological studies demonstrated the presence of *Spirorchis* spp. eggs in 10 turtles from the Centeáns ponds, 1 turtle from the Orbenlle pond, and 2 turtles from the Avia River (Table 1). As expected, the prevalence was particularly high (47.6%) in the Centeáns population, where the outbreak of spirorchidiasis was detected.

DISCUSSION

The family Spirorchidae was erected (as Spirorchidae) by Stunkard (1921) for blood flukes from turtles, with *Spirorchis* MacCallum, 1919 as the type genus. Spirorchids are considered highly pathogenic parasites with infections often being fatal for turtles (Goodchild & Dennis 1967, Johnson et al. 1998, Stacy 2008). Pathogenesis is principally associated with the acute inflammatory response to migrating eggs of spirorchids that eventually leads to granuloma formation resulting in extensive necrosis of affected tissues. Secondary infections associated with the passage of eggs through tissues, as well as constant irritation of the gastrointestinal tract causing diarrhea, starvation, dehydration, and fluid imbalance are also involved in spirorchid pathogenicity (Goodchild & Dennis 1967, Johnson et al. 1998, Stacy 2008).

The absence of a ventral sucker and post-ovarian testis confirms that the spirorchids causing severe disease in *Emys orbicularis* clearly differ from the species *Spirhapalum polesianum* Ejsmont, 1927, which has been reported infecting the vascular system of this host in Poland, Russia, Ukraine, Romania, and most probably in Germany (Ejsmont 1927, Sharpilo 1960, Snyder 2004, Mihalca et al. 2007, Jenemann & Bidmon 2009). In fact, they belong to the genus *Spirorchis*, in which only 8 valid species infecting the vascular system of North American freshwater turtles belonging to Chelydridae and Emydidae are recognized (Platt 1992, 1993). Although the taxonomy of *Spirorchis* species is still controversial and should probably be revised, the number of testes (never <7), the relatively short distance between anterior testis and caecal bifurcation, the apparent

absence of a median oesophageal pouch, and the presence of a small Manter's organ not extending into the intercaecal space confirm that the specimens from *E. orbicularis* belong to the species *Spirorchis elegans* Stunkard, 1923 (Platt 1992). This species has been reported to infect the vascular system of *Trachemys scripta* (type host) as well as *Chrysemys picta* (Schneider, 1783) and *Pseudemys concinna* (Le Conte, 1830) in North America (Platt 1992) and most recently in the lung vasculature of *T. s. elegans* introduced in Japan (Oi et al. 2012). Our findings therefore are alarming since *Spirorchis* spp. have never been reported before in non-North American turtles.

Parasite transmission has previously been documented from indigenous wild populations of *Mauremys leprosa* and *E. orbicularis* to red-eared sliders in Spain (Hidalgo-Vila et al. 2009). Host switch in the opposite direction, however, has been suggested or demonstrated only in the case of American eimerians (Apicomplexa; Segade et al. 2006) and polystomes (Monogenea; Verneau et al. 2011), although the pathogenic role of these organisms is presumably low. In our case, the species *S. elegans* could have been introduced in our wetlands with this exotic turtle, since the presence of *T. scripta* in the outbreak zone has been confirmed on several occasions (Ayres et al. 2013). The results of coprological studies reveal that although no fatal cases have yet been detected outside the outbreak area (Centeáns), the parasite, or another spirorchid with similar eggs, is also present in other populations of *E. orbicularis* inhabiting the Galician wetlands. In this sense, future molecular studies would be very helpful to confirm the precise identity of the eggs detected in the faeces of these turtles.

Studies are currently under way to investigate the dynamics of infection at the outbreak area and to identify, according to the life cycle of *S. elegans* (Goodchild & Kirk 1960), which gastropod species (native, or most probably exotic) is acting as an intermediate host for this highly pathogenic parasite, a very important aspect which could explain why *Spirorchis* spp. have not been found previously in native turtles in spite of the abundance and wide distribution of invasive sliders in European wetlands (Rödder et al. 2009).

In addition, praziquantel therapy followed by faecal examinations to monitor drug efficacy (currently in progress), as well as the establishment of local eradication programs for exotic turtles, are essential for the conservation of the European pond turtle in Galician wetlands, where this species is currently at risk of extinction.

In conclusion, our findings, together with previous investigations, support the role of invasive sliders in parasite spillover/spillback processes and competition, suggesting the necessity of increasing efforts to control the introduction and proliferation of this and other alien turtles in Europe.

Acknowledgements. We thank P. García-Díaz and O. Lorenzo-Carballea for their comments and suggestions. We are also grateful to Carles Juan-Sallés for providing us with useful information on pathology at the initial stage of the study. Part of this work was financed by Dirección Xeral de Conservación da Natureza (Xunta de Galicia).

LITERATURE CITED

- Ayres C (2009) Galápagos europeo—*Emys orbicularis*. In: Salvador A, Marco A (eds) Enciclopedia virtual de los vertebrados Españoles. Museo Nacional de Ciencias Naturales, Madrid, p 1–21. Available at: www.vertebradosibericos.org (accessed 24 May 2014)
- Ayres C, Alvarez A, Ayllon E, Bertolero A and others (2013) Conservation projects for *Emys orbicularis* in Spain. *Herpetol Notes* 6:157–164
- Cadi A, Joly P (2003) Competition for basking places between the endangered European pond turtle (*Emys orbicularis galloitalica*) and the introduced red-eared slider (*Trachemys scripta elegans*). *Can J Zool* 81: 1392–1398
- Cadi A, Joly P (2004) Impact of the introduction of the slider turtle (*Trachemys scripta elegans*) on survival rates of European pond turtle (*Emys orbicularis*). *Biodivers Conserv* 13:2511–2518
- Ejmsont L (1927) *Spirhapalum polesianum* n. g., n. sp. Trématode du sang d'*Emys orbicularis* L. *Ann Parasitol Hum Comp* 5:220–235
- Fisher MC, Garner TWJ (2007) The relationship between the emergence of *Batrachochytrium dendrobatidis*, the international trade in amphibians and introduced amphibian species. *Fungal Biol Rev* 21:2–9
- Fritz U (2001) *Emys orbicularis* (Linnaeus, 1758)—Europäische Sumpfschildkröte. In: Fritz U (ed) *Handbuch der Reptilien und Amphibien Europas*, Band 3/IIIA: Schildkröten I. Aula-Verlag, Wiebelsheim, p 343–515
- Fritz U (2003) Die Europäische Sumpfschildkröte. Laurenti, Bielefeld
- GEIB (Grupo Especialista en Invasiones Biológicas) (2006) TOP 20: las 20 especies exóticas invasoras más dañinas presentes en España. Edición patrocinada por la Fundación Territori i Paisatge de Caixa Catalunya, Serie Técnica N.2, GEIN, Léon
- Goodchild CG, Dennis ES (1967) Comparative egg counts and histopathology in turtles infected with *Spirorchis* (Trematoda: Spirorchidae). *J Parasitol* 53:38–45
- Goodchild CG, Kirk DE (1960) The life cycle of *Spirorchis elegans* Stunkard, 1923 (Trematoda: Spirorchidae) from the painted turtle. *J Parasitol* 46:219–229
- Hein JL, Arnott SA, Roumillat WA, Allen DM, de Buron I (2014) Invasive swimbladder parasite *Anguillicoloides crassus*: infection status 15 years after discovery in wild populations of American eel *Anguilla rostrata*. *Dis Aquat Org* 107:199–209
- Hidalgo-Vila J, Díaz-Paniagua C, Ribas A, Florencio M, Pérez-Santigosa N, Casanova JC (2009) Helminth communities of the exotic introduced turtle, *Trachemys scripta elegans* in southwestern Spain: transmission from native turtles. *Res Vet Sci* 86:463–465
- IUCN (International Union for Conservation of Nature) (2013) The IUCN Red List of threatened species, Version 2013.1. Available at: www.iucnredlist.org (accessed 2 July 2013)
- Jennemann G, Bidmon HJ (2009) Infektionen mit Blutparasiten aus der Familie der Spirorchidae bei *Emys orbicularis* in Deutschland—auch eine potentielle Bedrohung für die letzten einheimischen Vorkommen der Art? *Schildkröten im Fokus* 6:3–18
- Johnson CA, Griffith JW, Tenorio P, Hytrek S, Lang M (1998) Fatal trematodiasis in research turtles. *Lab Anim Sci* 48: 340–343
- Keller C, Andreu AC (2002) *Emys orbicularis* (Linnaeus, 1758). Galápagos europeo. In: Pleguezuelos JM, Márquez R, Lizana M (eds) *Atlas y Libro Rojo de los Anfibios y Reptiles de España (2ª impresión)*. DGCN-Asociación Herpetológica Española, Madrid, p 137–140
- Kolby JE, Smith KM, Berger L, Karesh WB, Preston A, Pessier AP, Skerrat LF (2014) First evidence of amphibian chytrid fungus (*Batrachochytrium dendrobatidis*) and ranavirus in Hong Kong amphibian trade. *PLoS ONE* 9: e90750
- Lymbery AJ, Morine M, Kanani HG, Beatty SJ, Morgan DL (2014) Co-invaders: the effects of alien parasites on native hosts. *Int J Parasitol Parasit Wildl* 3:171–177
- McCallum H (2012) Disease and the dynamics of extinction. *Philos Trans R Soc Lond B Biol Sci* 367:2828–2839
- Mihalca AD, Gherman C, Ghira I, Cozma V (2007) Helminth parasites of reptiles (Reptilia) in Romania. *Parasitol Res* 101:491–492
- Oi M, Araki J, Matsumoto J, Nogami S (2012) Helminth fauna of turtle species introduced in Japan, the red-eared slider turtle (*Trachemys scripta elegans*). *Res Vet Sci* 93:826–830
- Peeler EJ, Oidtmann BC, Midtlyng PJ, Miossec L, Gozlan RE (2011) Non-native aquatic animals introductions have driven disease emergence in Europe. *Biol Invasions* 13: 1291–1303
- Platt T (1992) A phylogenetic and biogeographic analysis of the genera of Spirorchinae (Digenea: Spirorchidae) parasitic in freshwater turtles. *J Parasitol* 78:616–629
- Platt T (1993) Taxonomic revision of *Spirorchis* MacCallum, 1919 (Digenea: Spirorchidae). *J Parasitol* 79:337–346
- Polo-Cavia N (2009) Factores que afectan a la competencia entre el galápagos leproso (*Mauremys leprosa*) y el introducido galápagos de Florida (*Trachemys scripta*). PhD dissertation, Universidad Autónoma de Madrid, Madrid
- Rödder D, Schmidlein S, Veith M, Lötters S (2009) Alien invasive slider turtle in unpredicted habitat: a matter of niche shift or of predictors studied? *PLoS ONE* 4: e7843
- Segade P, Crespo C, Ayres C, Cordero A, Arias MC, García-Estévez JM, Iglesias-Blanco R (2006) *Eimeria* species from the European pond turtle, *Emys orbicularis* (Reptilia: Testudines), in Galicia (NW Spain), with description of two new species. *J Parasitol* 92:69–72
- Sharpilo VT (1960) New records of helminths from reptiles in the U.S.S.R. *Seriya B, Dopovidi Akademiyi Nauk Ukrayins'koi RSR, Kiev*, p 1120–1123 (in Russian)

- Simberloff D, Rejmanek M (2011) Encyclopedia of biological invasions. University of California Press, Berkeley, CA
- Smith KF, Sax DF, Lafferty KD (2006) Evidence for the role of infectious diseases in species extinction and endangerment. *Conserv Biol* 20:1349–1357
- Smith KF, Acevedo-Whitehouse K, Pedersen AB (2009) The role of infectious diseases in biological conservation. *Anim Conserv* 12:1–12
- Snyder SD (2004) Phylogeny and paraphyly among tetrapod blood flukes (Digenea: Schistosomatidae and Spirorchiidae). *Int J Parasitol* 34:1385–1392
- Stacy BA (2008) Spirorchiid trematodes of sea turtles in Florida: associated disease, diversity, and life cycle studies. PhD dissertation, University of Florida, Gainesville, FL
- Strauss A, White A, Boots M (2012) Invading with biological weapons: the importance of disease-mediated invasions. *Funct Ecol* 26:1249–1261
- Stunkard HW (1921) Notes on North American blood flukes. *Am Mus Novit* 12:1–5
- Uchii K, Okuda N, Minamoto T, Kawabata Z (2013) An emerging infectious pathogen endangers an ancient lineage of common carp by acting synergistically with con-specific exotic strains. *Anim Conserv* 16:324–330
- Verneau O, Palacios C, Platt T, Alday M and others (2011) Invasive species threat: parasite phylogenetics reveals patterns and processes of host-switching between non-native and native captive freshwater turtles. *Parasitology* 138:1778–1792

*Editorial responsibility: Lee Skerratt,
Townsville, Queensland, Australia*

*Submitted: May 28, 2014; Accepted: October 6, 2014
Proofs received from author(s): January 13, 2015*