



New perspectives on Eastern Baltic cod movement patterns from historical and contemporary tagging data

Monica Mion^{1,*}, Christopher A. Griffiths^{1,2,3}, Valerio Bartolino¹, Stefanie Haase⁴, Annelie Hilvarsson¹, Karin Hüssy⁵, Maria Krüger-Johnsen⁵, Uwe Krumme⁴, Regitze Benedicte Carlstedt Lundgreen⁵, Johan Lövgren¹, Kate McQueen^{4,6}, Maris Plikshs⁷, Krzysztof Radtke⁸, Jari Raitaniemi⁹, Michele Casini^{1,10}

¹Swedish University of Agricultural Sciences, Department of Aquatic Resources, Turistgatan 5, 45330 Lysekil, Sweden

²University of Sheffield, Department of Animal and Plant Sciences, Western Bank, Sheffield S10 2TN, UK

³Centre for Environment, Fisheries and Aquaculture Science, Lowestoft NR33 0HT, UK

⁴Thünen Institute of Baltic Sea Fisheries, Alter Hafen Süd 2, 18069 Rostock, Germany

⁵Technical University of Denmark, National Institute of Aquatic Resources, Kemitorvet, 2800 Kgs. Lyngby, Denmark

⁶Institute of Marine Research, PO Box 1870 Nordnes, 5817 Bergen, Norway

⁷Fish Resource Research Department, Institute of Food Safety, Animal Health and Environment, 3 Lejupes Street, 1076 Riga, Latvia

⁸National Marine Fisheries Research Institute, Ul. Kołłątaja 1, 81-332 Gdynia, Poland

⁹Natural Resources Institute Finland, Luke, Itäinen Pitkätie 4 A, 20520 Turku, Finland

¹⁰University of Bologna, Department of Biological, Geological and Environmental Sciences, Via Selmi 3, 40126 Bologna, Italy

ABSTRACT: Knowledge of the movement patterns and area utilisation of commercially important fish stocks is critical to management. The Eastern Baltic cod *Gadus morhua*, one of the most commercially and ecologically important stocks in the Baltic Sea, is currently one of the most severely impacted fish stocks in Europe. During the last 2 decades, this stock has experienced drastic decreases in population size, distributional range, individual growth and body condition, all of which may have affected the movements between different areas of the Baltic Sea. In this study, we investigated the seasonal movement patterns of Eastern Baltic cod by re-analysing historical tagging data collected by the countries surrounding the Baltic Sea (1955–1988) and compared historical patterns with contemporary data from a recent international tagging experiment (2016–2019). Our re-analyses of historical data showed the presence of different movement behaviours, i.e. resident or seasonally migratory, with larger distances moved by cod released in the northern and central Baltic areas compared to cod released in the southern Baltic areas. Furthermore, trends from the recent tagging experiment indicate a persistent resident strategy in the southern Baltic area. These findings present additional information on general movement patterns and area utilisation of Eastern Baltic cod that could inform future management actions and aid stock recovery.

KEY WORDS: Baltic Sea · *Gadus morhua* · Fish movement · Mark–recapture · Historical data · Home range · Kernel density estimation · Generalized additive model

Resale or republication not permitted without written consent of the publisher

1. INTRODUCTION

Fish often undertake regular migrations between areas of feeding and spawning in order to maximize the benefits available from certain habitats for a par-

ticular activity or life stage (Metcalf 2006). As a consequence, knowledge of migration and dispersal behaviour, termed ‘movement patterns’, is fundamental for managing commercially fished populations, especially in areas where population mixing takes place

(Neat et al. 2014, Zemeckis et al. 2014, Rose & Rowe 2015), where environmental conditions are subject to change (Drinkwater 2005, 2009, Engelhard et al. 2014) or where ontogenetic movements generate marked differences in the spatial distribution of different age groups.

One of the most widely applied methods to study the movements of wild animals is to use individual markers. Particularly, conventional tagging experiments, which provide information on release and recapture positions, and are used for investigating broad-scale patterns such as area of utilisation and movement patterns of individuals (e.g. Rughton & Metcalfe 2019).

The movements of Atlantic cod *Gadus morhua* have been studied extensively with tagging experiments (Robichaud & Rose 2004). Cod migratory behaviour varies markedly with respect to area, season and major environmental factors (Pálsson & Thorsteinsson 2003). Cod of the same population may adopt different migration routes between areas, and their speed of travel can vary considerably during and between journeys (Rughton & Metcalfe 2019). Differences in migratory strategies have also been identified, with some cod remaining relatively stationary, while others redistribute over vast spatial distances that exceed 1000 km (Robichaud & Rose 2004). Cod migratory patterns therefore appear to be complex, and there are cases where populations of predominantly migratory and predominantly sedentary cod overlap in certain areas and at certain times of the year (e.g. cod at the Lofoten Islands, Norway, Nordeide 1998).

Baltic Sea cod inhabit an area that differs from most of the other areas where the species is found. The Baltic Sea is one of the largest brackish areas in the world, where severe changes in biotic and environmental conditions have occurred in the past 100 yr (Reusch et al. 2018). Two genetically distinct cod populations are present in this area: the Western Baltic cod (WBC) stock in International Council for the Exploration of the Sea (ICES) subdivisions (SDs) 22–24 and the Eastern Baltic cod (EBC) stock in SDs

24–32 (Fig. 1), with mixing of the 2 stocks occurring in SD 24 (Hüssy et al. 2016, ICES 2021).

In this extreme environment, EBC have uniquely adapted to survive and successfully reproduce in the low-salinity and low-oxygen conditions of the eastern Baltic Sea (Nissling et al. 1994, Andersen et al. 2009), experiencing temperatures and salinities at the upper and lower tolerance limits of Atlantic cod, respectively (Köster et al. 2005, Mackenzie et al. 2007). Historically, cod has been one of the most important commercial species in the Baltic Sea (Bagge et al. 1994, ICES 2014) and, as a major piscivorous fish, plays an important structuring role in the eco-

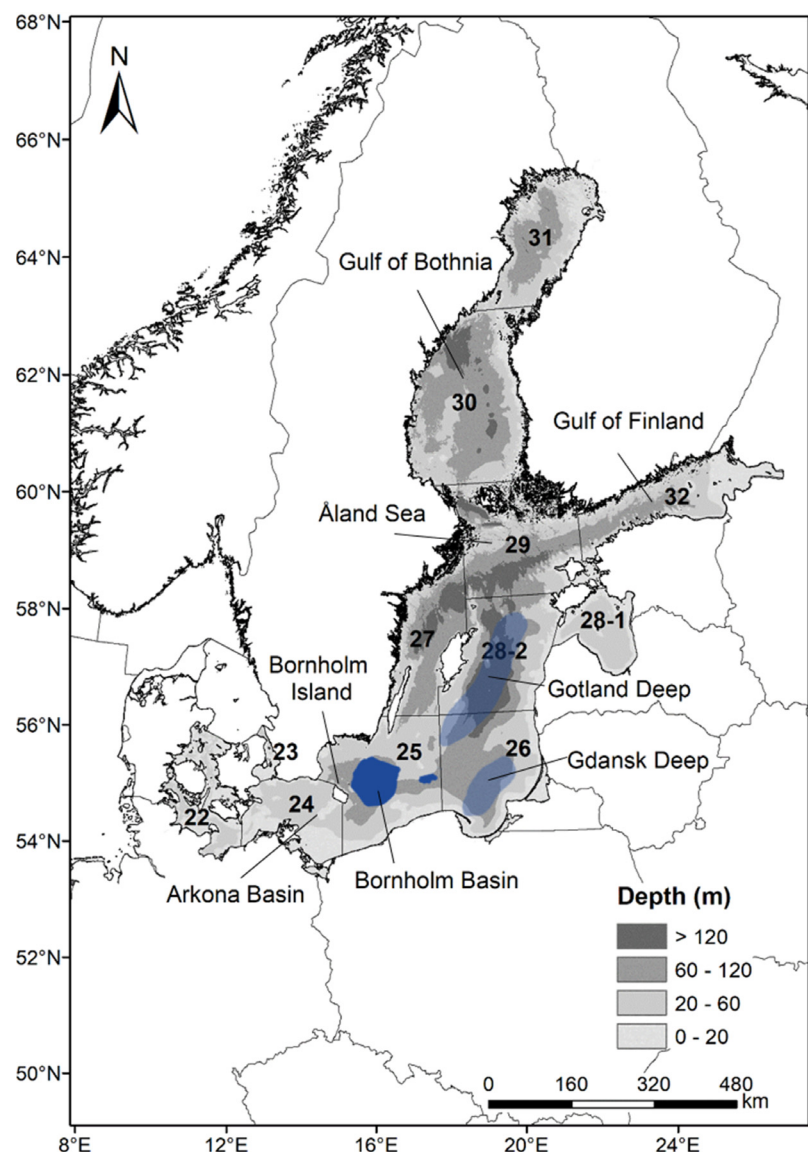


Fig. 1. Baltic Sea, showing ICES subdivisions. The former cod spawning grounds of the Gotland Deep and Gdansk Deep are shaded in light blue, while the active spawning ground of the Bornholm Basin is marked in dark blue (modified after Cardinale & Svedäng 2011)

system (Casini et al. 2009). However, the EBC stock is currently one of the most severely threatened fish stocks in Europe (ICES 2020), and since 2019, the scientific recommendation has been a complete closure of the EBC fishery (ICES 2021).

The EBC stock size has changed considerably, with a peak in the early 1980s (ca. 200 000 t) and a subsequent decline (Eero et al. 2015). Concurrent with the decline in stock size, a number of changes have been observed in the EBC stock, which include reduced body condition, maturation at a smaller size, shift in the timing of peak spawning, reduced growth, increased parasite infestation and thiamine deficiency (Eero et al. 2015, Horbowy et al. 2016, Engelhardt et al. 2020, Mion et al. 2021). After the late 1980s, the decline in cod abundance was also accompanied by a spatial contraction of the stock, primarily to the southern Baltic Sea (SD 25) (Wieland et al. 2000, Eero et al. 2012, Bartolino et al. 2017, Orto et al. 2019). This contraction has been linked to different biotic and abiotic conditions, which caused some areas to become 'cod hostile' (Casini et al. 2009, Möllmann et al. 2009). In fact, in the last 40 yr, the extent of hypoxic areas in the Baltic Sea has increased 5-fold (Carstensen et al. 2014, Meier et al. 2019). In addition, since the mid-1980s, the hydrographic conditions in the eastern spawning areas (in SDs 26 and 28) were thought to be no longer suitable for survival of cod eggs, and SD 25 is now considered the only area supporting successful reproduction of EBC (Köster et al. 2017; Fig. 1). All of these dramatic changes in the marine environment, biology and distribution of the EBC stock may have resulted in changes in the movement patterns of the stock.

Extensive conventional tagging experiments were conducted from the 1950s to the 1980s to study the movement patterns of cod in the Baltic Sea and adjacent areas. The results of these historical tagging experiments have been summarised by a number of authors (Aro 1989, 2002, Bagge & Steffensen 1989, Robichaud & Rose 2004). Briefly, these studies showed that both sedentary and migratory behaviours were present in the EBC stock and that generally EBC exhibited strong migratory tendencies towards the southern Baltic. However, these studies only presented a description of the general movements, rather than a quantitative analysis, and a comparison with contemporary data in light of the deteriorated situation of the EBC stock is lacking.

In the studies of Mion et al. (2020, 2021), data from most of these historical tagging experiments, together with recent tagging experiments carried out in the southern Baltic Sea in 2016–2019, were digi-

tised and collated for the first time in a unique database. This database provides a perfect opportunity to reanalyse historical data and investigate how the movement patterns of EBC may have changed through time. To achieve this quantitatively, kernel density estimation (KDE) and generalized additive models (GAMs) were used to explore seasonal movement patterns and area utilisation of EBC in different areas of the Baltic Sea. Based on previous research (Aro 1989, 2002, Bagge & Steffensen 1989, Robichaud & Rose 2004), we hypothesised that during the historic period, EBC would have exhibited both migratory and sedentary movement strategies, with distance travelled and area utilisation varying based on release area. Conversely, in the contemporary data, we expected that changing biotic and abiotic conditions in the northern and central Baltic, as well as contractions in the spatial distribution of EBC towards the south, may have impacted movement rates and area use. Consequently, we hypothesised that recently tagged EBC would show a greater utilisation of southern areas, as northern and central areas are no longer suitable for spawning and are now considered 'cod hostile'. Any changes in movement patterns or area use by EBC could impact the level of mixing with the WBC stock in the southern Baltic, with potential implications for management and future stock recovery.

2. MATERIALS AND METHODS

Data from historical cod tagging experiments performed between the 1950s and 1980s covering the main historical distribution area of the EBC stock (SDs 24–32), and the more recent project 'Tagging Baltic Cod' (TABACOD) dataset (2016–2019) covering the main current distribution area of the EBC stock (SDs 24–26), were extracted from the database compiled by Mion et al. (2020, 2021). All records were quality checked for movement analyses, selecting only the records where release and recapture dates and geographical positions as well as total body length measurements at release ($\text{Length}_{\text{tl}}$, cm) were present. Any recaptures of cod that occurred within 30 d of release were excluded to ensure that all cod in this study had sufficient time to recover from the tagging procedure and move to different areas following release. A summary of the different tagging procedures and detailed information on releases and recaptures for these datasets can be found in Mion et al. (2020, 2021) and Hüssy et al. (2020).

2.1. Historical data

In total, 6798 records were suitable for movement analyses. Each record consisted of release and recapture dates and geographical positions (Fig. 2; Fig. S1a in the Supplement at www.int-res.com/articles/suppl/m689p109_supp.pdf) as well as measurements of $\text{Length}_{\text{TL}}$ (Fig. S1c). Tagging efforts were focused in SDs 24–32 (Fig. 2; Fig. S2) and the recaptures were mainly reported by commercial fishers from their catches. The precision of the reported recapture locations varied largely between fishers. When only a location name was given (e.g. '4 nautical miles south-east of Dueodde lighthouse'), a geographical position was assigned as precisely as possible. In some cases, historical maps of the tagging experiments were used to confirm the position of a particular location name (an example is provided in Fig. 3).

Records for tagged cod spanned the mid-1950s to the 1980s, with 65% of cod recaptured during the 1970s (Fig. S1a). Cod were released year-round, but with reduced effort in Quarter 3 (July–September). Tagging effort was likely reduced in the warmer months of Quarter 3, as the thermocline is more pronounced and less tolerated by cod during the tag and release process (Otterlind 1984; Table S1a).

Tagging effort varied in space and time. In the southern Baltic areas, in particular the Bornholm Basin (SD 25), tagging occurred throughout the historical period, whereas in the central and northern Baltic areas, tagging effort was more concentrated in certain time periods (Fig. S2).

The time between release and recapture (days at liberty, DAL) ranged between 30 and 3928 d (median: 174 d; Fig. S1b). The historical dataset consisted of a mix of adults and juveniles with a $\text{Length}_{\text{TL}}$ range from 17 to 98 cm (median: 40 cm; Fig. S1c; size at sexual maturation in the historical period was 45–50 cm for females and 37–41 cm for males; Cardinale & Modin 1999). The return rate (i.e. the percentage of tagged cod that were recaptured and returned to the research institutes) was on average 11.8% (Mion et al. 2021).

2.2. Contemporary data

The contemporary dataset consists of 301 records suitable for movement analyses from the TABACOD project (Hüssy et al. 2020), spanning the years 2016–2019. Again, each record consisted of release and recapture dates and geographical positions (Fig. 2;

Fig. S1a) as well as measurements of $\text{Length}_{\text{TL}}$. Cod were released year-round, but with limited numbers in Quarter 3 (Table S1b). Tagging efforts were concentrated in SDs 24–26 (Fig. 2), covering the main current distribution area of the stock (Orio et al. 2019). The contemporary dataset consisted mainly of adults with a $\text{Length}_{\text{TL}}$ range from 18 to 55 cm (median: 39 cm; current size at sexual maturation is 19 cm; Köster et al. 2017; Fig. S1c). DAL ranged between 30 and 927 (median: 220) (Fig. S1b). The return rate of tagged cod from the TABACOD project was 1.5% (Mion et al. 2021).

2.3. Analyses of fish movement

Due to changes in the main distribution of the Baltic Sea cod stock (Orio et al. 2019 and references therein), the spatial coverage differed by dataset (Fig. 2). The historical data contained records spanning almost the entire Baltic Sea (SDs 24–32), whereas the contemporary dataset contained records restricted to the southern Baltic Sea (SDs 24–26), where EBC currently concentrate.

To assess seasonal differences in movement patterns, records were divided into 2 recapture seasons: spawning and feeding. For the historical dataset, the spawning season was defined as January to June, which includes the main spawning season and a period of migration to and from the spawning grounds (Aro 1989, Wieland et al. 2000), whereas the feeding season was defined as July to December (Aro 1989). Since the 1990s, a shift in the timing of peak spawning towards the summer has occurred (Wieland et al. 2000, Bleil & Oeberst 2004); therefore, the spawning season for the contemporary dataset was defined as April to September, while the feeding season was defined as October to March.

Average values and coefficient of variation (CV; calculated as standard deviation divided by mean) for distance travelled by cod in km (d) were estimated for each SD of release (SD_{TL}) and for each season. d was calculated as the great-circle distance (i.e. geodesic distance) between release and recapture locations using the function 'distm()' in the package 'geosphere' in R (Fig. 4). All analyses were conducted in R version 4.0.2 (R Core Team 2020).

2.3.1. KDE

KDE was used to describe the main distributional areas of EBC tagged in different SD_{TL} . Assuming a

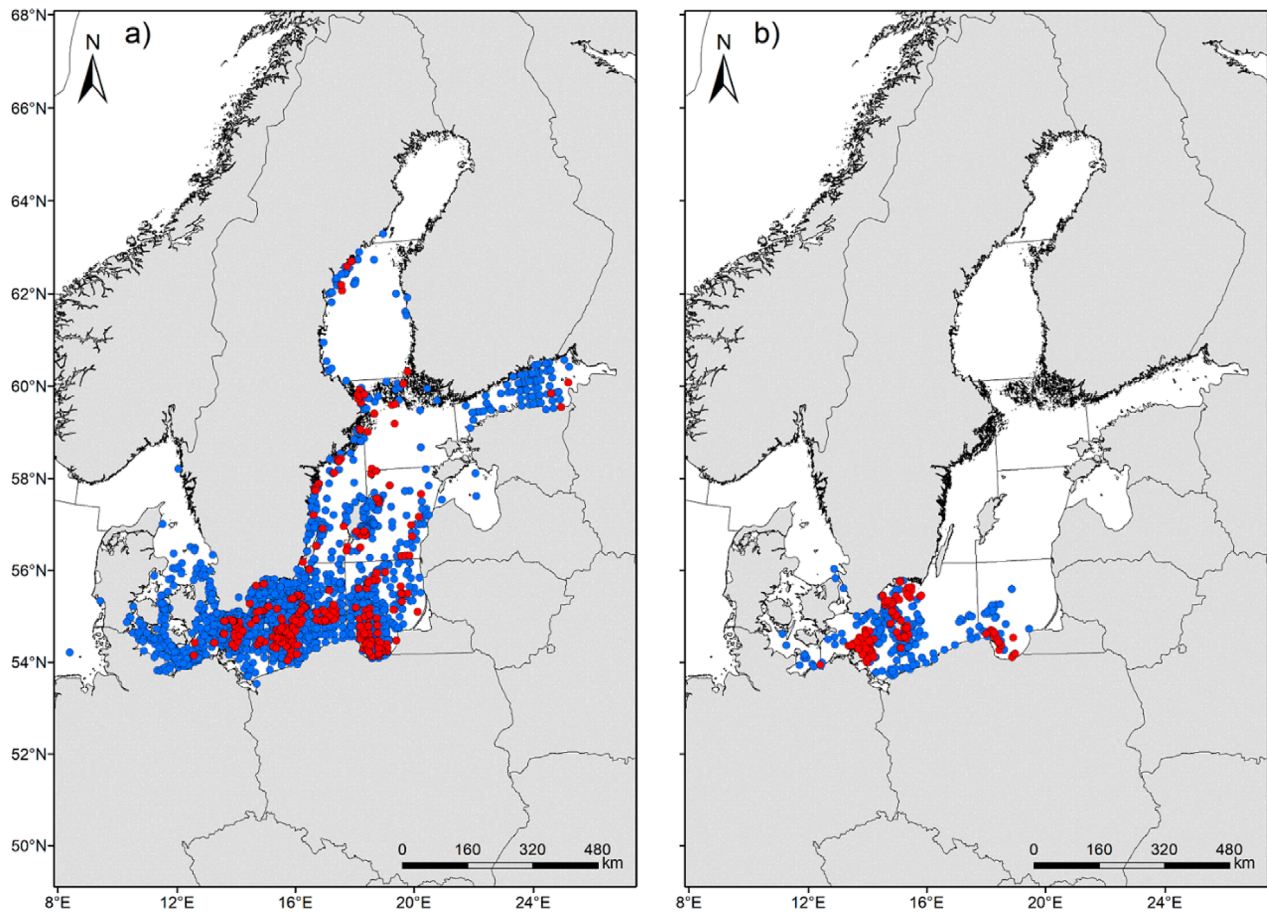


Fig. 2. Baltic Sea, showing cod release positions (red dots) and recapture positions (blue dots) for the (a) historical and (b) contemporary tagging experiments. See Fig. 1 for a map of the Baltic Sea with ICES subdivisions

homogeneous fishing effort, this analysis provides a visualisation of the probability of recapturing a tagged individual in a given location (Worton 1987), conditional on the grouping factors applied (SD_{ri} , season of recapture and time period) and the constraints of the data ($DAL > 30$). All KDEs were calculated assuming a bivariate normal kernel using the kernel probability density function from the 'ade-habitatHR' package (Calenge 2015) in R. A detailed description of this approach can be found in Calenge (2015) and Griffiths (2019) and has been used previously to describe area utilisation by Atlantic cod in the Gulf of Maine (Dean et al. 2014) and in the waters surrounding the UK (Righton et al. 2007, Neat et al. 2014). For clarity, the default 'reference bandwidth' approach was used to estimate the smoothing parameter h for each KDE. Moreover, as is common in the movement ecology literature, the 95 and 50% probability contours were extracted from each KDE and assumed to represent the population's 2-dimensional 'home range' and 'core area', respectively (Worton

1989, Seaman & Powell 1996, Sólmundsson et al. 2015). Home range identifies the area occupied by the majority of cod in their normal activities of spawning and feeding, and the core area identifies the most intensively used areas within an animal's home range (Burt 1943, Powell 2000).

For each SD_{ri} , KDEs were estimated separately for the EBC spawning and feeding recapture seasons. Due to possible mixing of stocks (EBC and WBC) in SD 24 and the fact that some cod released in SD 24 might belong to the WBC stock, a sensitivity analysis was conducted to estimate KDEs for the WBC spawning (i.e. December to April which includes the main spawning season and a period of migration to and from the spawning ground; Hüsey 2011) and feeding seasons (defined as May to November). This analysis showed that the estimated KDEs from the WBC feeding and spawning seasons were similar to the estimated KDEs from the EBC feeding and spawning seasons, both for historical and contemporary datasets (Fig. S3). In addition, for the contemporary data,

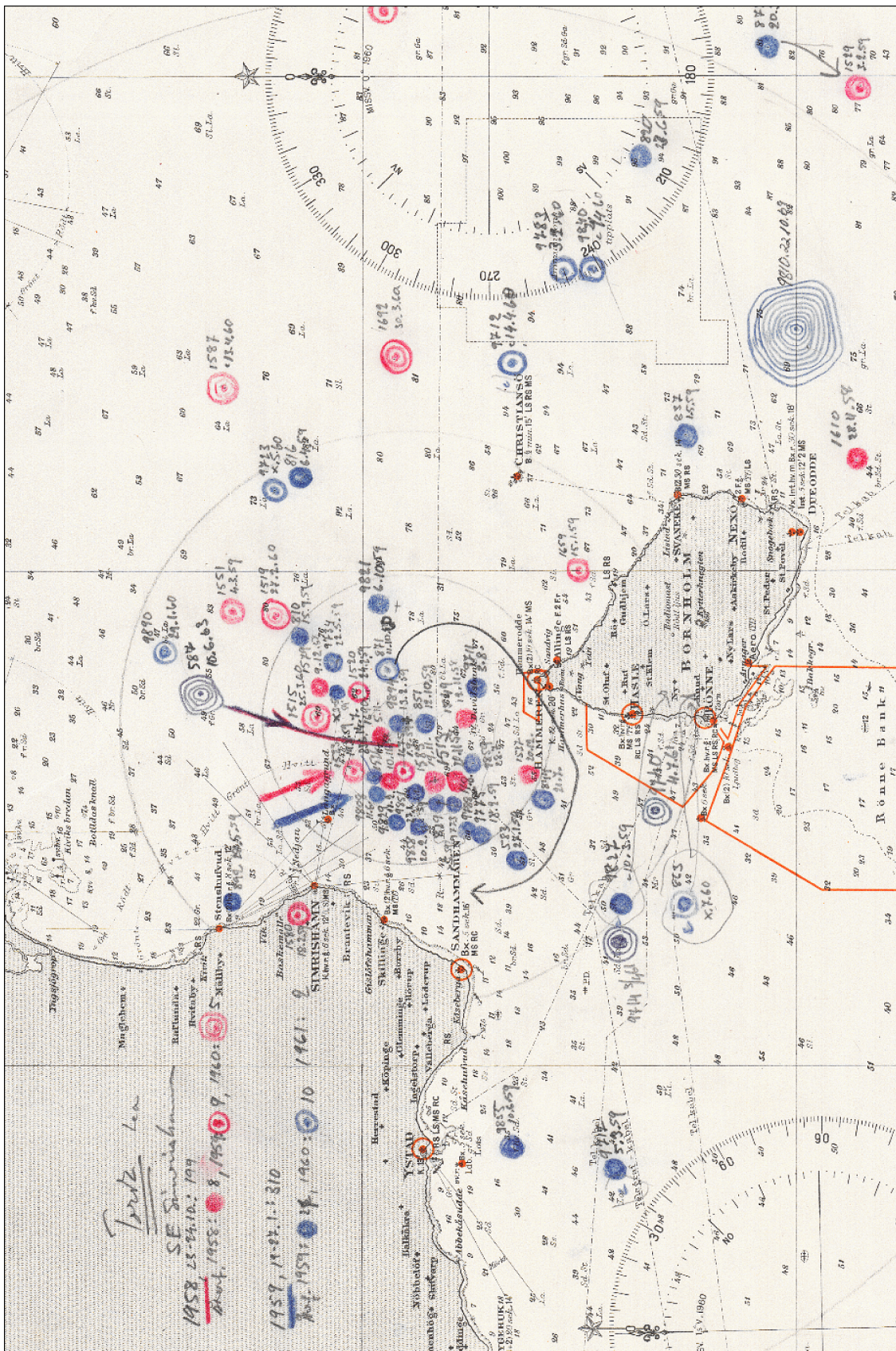


Fig. 3. Example of a historical map visualising Swedish tagging experiments carried out in 1958 (red) and 1959 (blue) in the Baltic Sea (near Bornholm Island). Arrows indicate the release and dots the recapture locations of cod. Filled dots represent cod that were recaptured within a year of release, while additional years (>1) from release are represented as circles surrounding a recapture location. For example, in the bottom right of the map, a cod was recaptured after 10 yr and its recapture location is illustrated as a blue dot surrounded by 9 circles

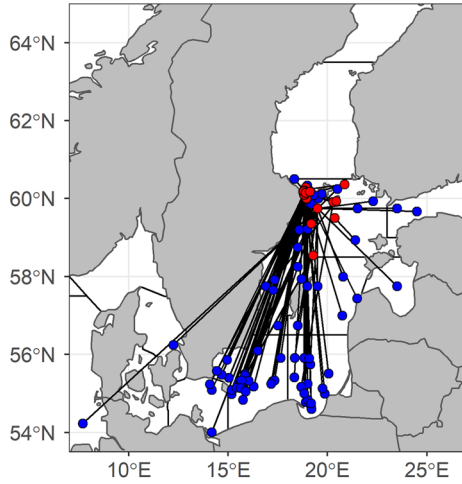


Fig. 4. Example of straight-line trajectories (black lines) between release (red dots) and recapture (blue dots) positions for fish released in SD 29 (Åland Sea) during the historical tagging experiments

genetic and otolith shape analyses revealed that ~80% of the recaptured cod released in SD 24 belonged to the EBC stock, highlighting a higher presence of EBC in the recaptures (Hüssy et al. 2020).

The size (km²) of the home ranges and core areas for each SD_{ri} and season were calculated in ArcMAP (v.10.4.1). In addition, in the southern Baltic Sea, the area of home range overlap (%) and core area overlap (%) between historical and contemporary datasets were also calculated for each SD_{ri}.

2.3.2. GAMs

For the KDE analyses, records were grouped into seasons without taking into account the effects of DAL on d (e.g. cod that were at liberty for 2 mo were considered alongside cod that were at liberty for 2 yr). Previous studies on North Atlantic cod stocks described a linear relationship between d and DAL for some groups, while for other groups, a non-linear relationship linked to seasonality was found (Espeland et al. 2008, Rogers et al. 2014). Therefore, to further explore the seasonal movement patterns of EBC, GAMs with a restricted maximum likelihood approach (Wood 2006) were applied to the relationship between d and DAL. Our prior expectation was that the relationship between d and DAL would be affected by cod release location. Thus, d would change according to the proximity of SD_{ri} to spawning and feeding areas (e.g. with shorter d for cod recaptured during the spawning period and released in an area closer to the spawning ground). Length_{ri} was in-

cluded as an additional explanatory variable to assess possible effects of fish size and ontogeny on d .

The GAM was formulated as follows:

$$d = \alpha + s(\text{DAL}:\text{SD}_{ri}) + \text{Length}_{ri} + \varepsilon \quad (1)$$

where α is the intercept, s is the thin plate smoothing spline function (Wood, 2003), and ε is an error term. An interaction was used between the continuous variable DAL and the factor SD_{ri} to assess possible seasonal differences in d between SD_{ri}.

Due to the low number of recaptures for the contemporary dataset, the GAM was performed only with the historical dataset. To analyse the shape of the relationship between d and DAL, 2 separate models were fitted to data with release dates from quarter 2 (April–June; spawning period) and from quarter 4 (October–December; feeding period). Pre-selection of the quarter of release and treatment of DAL as a continuous variable allowed us to capture possible effects of seasonality (movements between spawning and feeding grounds) on d . A gamma distribution with a logarithmic link function was used for the GAMs because it best represented the distribution of d .

To improve consistency and representation of the datasets, the GAMs were fitted to restricted data. Only cod with a DAL between 30 and 550 and a Length_{ri} between 25 and 70 cm ($n = 1202$ for cod released in quarter 2; $n = 1981$ for cod released in Quarter 4) were considered. To avoid taking the log of zero, all zero distances were given the value of the lowest observed distance (~1 km). All GAMs were implemented using the ‘mgcv’ library in R (Wood 2006). Model fit was assessed by visual inspection of the residuals (see Fig. S4).

3. RESULTS

The average d for cod released in the southern Baltic area (SDs 24–26) was ~80 km for both historical and contemporary datasets, and for both recapture seasons (Fig. 5). In the historical dataset, seasonal patterns in average d were observed. In particular, cod released in the northern and central Baltic Sea (SDs 27–32) exhibited greater d during the spawning season compared to the feeding season (Fig. 5; average d of 235 and 135 km, respectively). In addition, for the northern areas (SDs 29 and 30), the variation in d was higher than in the southern SDs in both the historical and contemporary datasets (Fig. 5; Table S2).

3.1. Movement patterns in the spawning season with KDE

In the historical dataset, cod released in the southern Baltic areas (SDs 24–26), were mostly recaptured in the same SD of release; however, some variation was observed (Fig. 6, Table 1). For example, core areas of cod released in SDs 26 and 24 extended into SD 25 during the spawning season. Similarly, cod released in SD 24 had a home range during the spawning season that extended in a western direction into SD 21. Moreover, cod released in SD 25 had a home range that extended in an eastern direction into SD 26.

In the contemporary dataset, recaptures during the spawning season mostly occurred in the same SD of release (Fig. 7, Table 1). These findings are consistent with the historical dataset from the southern Baltic areas with high home range overlaps of ~50% (Fig. 8, Table 2). However, some differences between the datasets occurred in the southern Baltic area. In the contemporary dataset, core areas and home ranges in SDs 24 and 25 occurred in close proximity to Bornholm Island on the boundary between the 2 SDs (Fig. 8), while in the historical dataset, the home range extended towards the western or eastern direction depending on whether cod were released in SD 24 or 25, respectively. In addition, cod released in SD 26 had 2 core spawning areas in the historical period (SDs 25 and 26) while in the contemporary dataset, cod were mainly recaptured in SD 26 (Fig. 8). In the historical dataset, recaptures during

the spawning season of cod released in the northern and central areas (SDs 27–32) were mainly found in SD 25 and to some extent in SD 26, or in the SD of release (Fig. 6, Table 1). One exception to this pattern occurred within SD 32, where cod were found to have both core areas and home ranges.

3.2. Movement patterns in the feeding season with KDE

In general, both home ranges and core areas during the feeding season were similar to the home ranges and core areas detected during the spawning season, irrespective of the dataset (Figs. 6 & 7, Table 2). In the historical dataset, there was a general trend of recapture close to the area of release, although some notable exceptions were observed. For example, cod released in SD 29 had core feeding areas that were limited to the northern Baltic, while in the spawning season, a core area was also detected in the southern Baltic. Cod released in SD 26 had a core feeding area in SD 26, and an extended home range, which spanned SDs 25, 26 and 28.2. During the feeding season of cod released in the southern Baltic areas, the overlap in core areas and home ranges between historical and contemporary datasets was higher than in the spawning season (Fig. 8, Table 2). This high overlap was especially true for cod released in SD 24 (home range overlap ~91%) but less so in SDs 25 and 26 (home range overlap ~55 and 78%, respectively; Table 2). Visu-

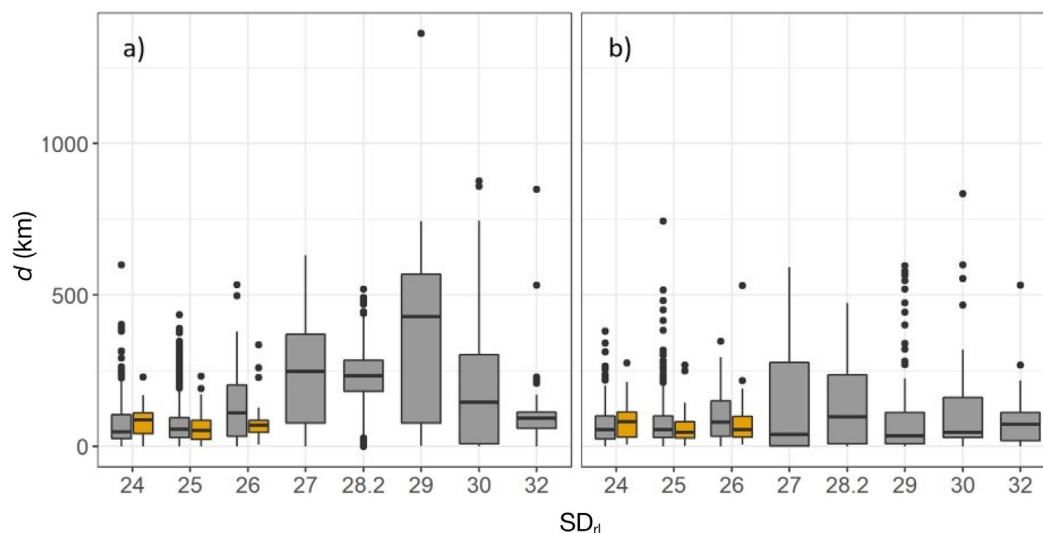


Fig. 5. Distance between release and recapture (d) during (a) spawning and (b) feeding seasons by subdivision of release (SD_r) for the historical (grey) and contemporary (orange) periods. Spawning and feeding seasons are assigned based on recapture time. Thick horizontal line: median; box: 25th and 75th percentiles; whiskers: 1.5× the interquartile range; black dots: outliers

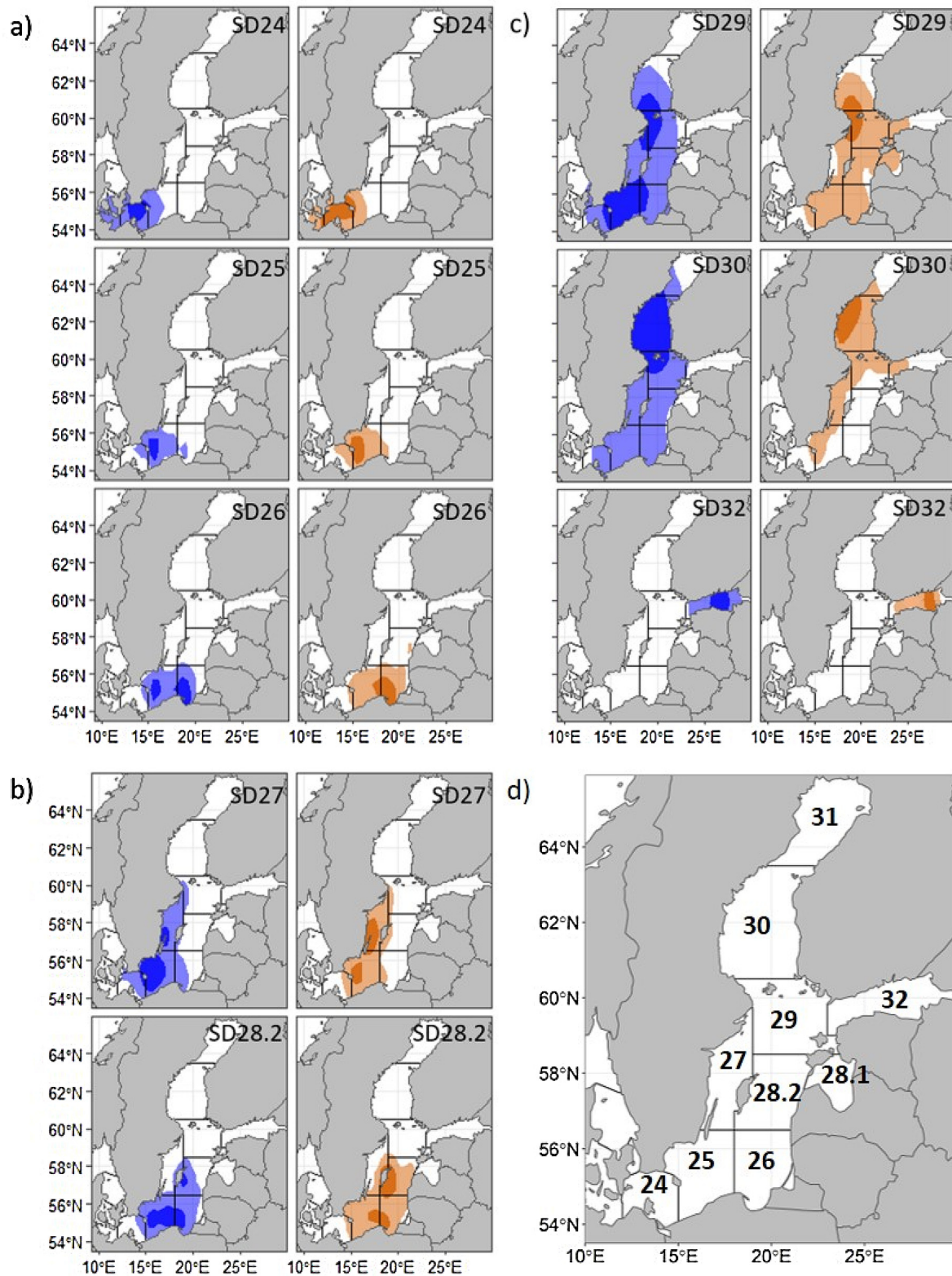


Fig. 6. 95% kernel home ranges (lighter colours) and 50% kernel core areas (darker colours) for each subdivision (SD) of release written on the top right corner of each map in the (a) southern, (b) central and (c) northern Baltic areas for the historical dataset. (d) ICES subdivisions in the Baltic Sea. Data shown are for cod recaptured during the spawning season (January to June; blue, left panels) and the feeding season (July to December; orange, right panels)

Table 1. Percentage and total number (in brackets) of cod recaptured by subdivision of release (SD_{rl}) and subdivision of recapture (SD_{rc}) during the (a) spawning and (b) feeding seasons for the historical and contemporary datasets. Percentage and total number of recaptures in the same SD_{rl} are in **bold**

(a)	Dataset	SD_{rl}	IVb	20	21	22	23	24	Spawning SD_{rc}							
									25	26	27	28	29	30	31	32
Historical		24	0.1 (1)	1.5 (11)		16.1 (119)	1.4 (10)	61.6 (458)	18.4 (137)	0.5 (4)		0.4 (3)				
		25		0.3 (6)		1.0 (18)	0.2 (4)	6.0 (111)	87.6 (1622)	4.7 (86)	0.1 (1)	0.2 (3)				
		26				0.3 (2)		2.9 (21)	43.6 (317)	52.4 (381)	0.1 (1)	0.7 (5)				
		27		0.5 (1)		0.5 (1)		3.6 (8)	63.4 (140)	4.1 (9)	27.2 (60)		0.5 (1)			
		28					0.1 (1)	1.4 (11)	52.9 (427)	27.2 (220)	0.4 (3)	18.1 (146)				
		29	1.0 (1)	1.0 (1)				3.03 (3)	32.3 (32)	13.11 (13)	8.1 (8)	9.1 (9)	32.4 (32)			
		30							9.1 (2)	9.1 (2)	4.6 (1)		22.7 (5)	54.6 (12)		
		32							2.5 (4)	2.47 (4)						95.1 (154)
		24				2.1 (2)		54.3 (51)	43.7 (41)							
		25					1.9 (1)	29.6 (16)	66.7 (36)	1.9 (1)						
Contemp.		26						4 (1)	20 (5)	76 (19)						
		24														
		25														
		26														
		24														
		25														
		26														
		24														
		25														
		26														
(b)	Dataset	SD_{rl}	IVb	20	21	22	23	24	Feeding SD_{rc}							
									25	26	27	28	29	30	31	32
Historical		24	0.3 (1)	1.2 (4)		13.2 (43)	2.8 (9)	54.8 (178)	26.5 (86)	1.2 (4)						
		25		0.3 (2)		0.4 (3)	0.1 (1)	7.0 (50)	85.8 (609)	5.1 (35)	0.7 (5)	0.6 (4)		0.1 (1)		
		26						0.7 (2)	33.5 (90)	61.0 (164)		4.9 (18)				
		27														
		28	0.5 (1)		0.5 (1)	34.6 (72)	1.4 (3)	61.1 (127)	1.0 (2)	1.0 (2)	1.6 (6)	54.2 (199)				
		29							27.5 (101)	16.6 (61)	2.9 (2)	4.4 (3)	73.5 (50)	1.5 (1)		2.9 (2)
		30							7.4 (5)	7.4 (5)	4.4 (2)		8.9 (4)	80.0 (36)	2.2 (1)	
		32							2.2 (1)	1.7 (3)		0.6 (1)				97.7 (169)
		24			3.7 (2)	9.3 (5)		63.0 (34)	24.0 (13)							
		25				4.5 (2)		40.9 (18)	54.5 (24)							
		26				3.3 (1)			30.0 (9)	66.7 (20)						

ally, foraging areas appeared to be constricted in the contemporary period (Fig. 8).

3.3. Movement patterns with GAMs

GAMs applied to the historical dataset for cod released in quarters 2 and 4 explained 15.5 and 15.7 % of the deviance of the overall model, respectively (see Tables S3 & S4 for model summaries). For cod released in Quarter 2 (spawning period) in SD_{rl} 24, 26, 29 and 32, DAL had no significant effect on the distance between release and recapture positions, while for cod released in SD_{rl} 25, 27 and 28.2, the effect was significant, showing that d slightly increased over time and reached an asymptote (Table S3, Fig. S5). For cod released in quarter 4 (feeding period) for most of the SD_{rl} the DAL had a significant effect on d (Table S4, Fig. S6). In particular, a positive, almost linear effect of DAL on d was found for cod released in SD_{rl} 25 and 29. In comparison, cod released in SD_{rl} 24, 26, 27 and 28.2 displayed a positive nonlinear relationship between DAL and d , whereby d increased to a point but then declined to a minimum at around 300 to 350 DAL, and then increased thereafter (Table S4, Fig. S6). There was no significant effect of DAL on d for cod released in SD_{rl} 32 (Table S4, Fig. S6).

A significant positive nearly linear effect of $Length_{rl}$ on d was found for cod released both in quarters 2 and 4, with cod displaying an increase in d with increasing body size (Tables S3 & S4, Figs. S5 & S6). Therefore, larger cod tended to be recaptured at more distant locations, whereas smaller cod tended to be recaptured closer to the point of release.

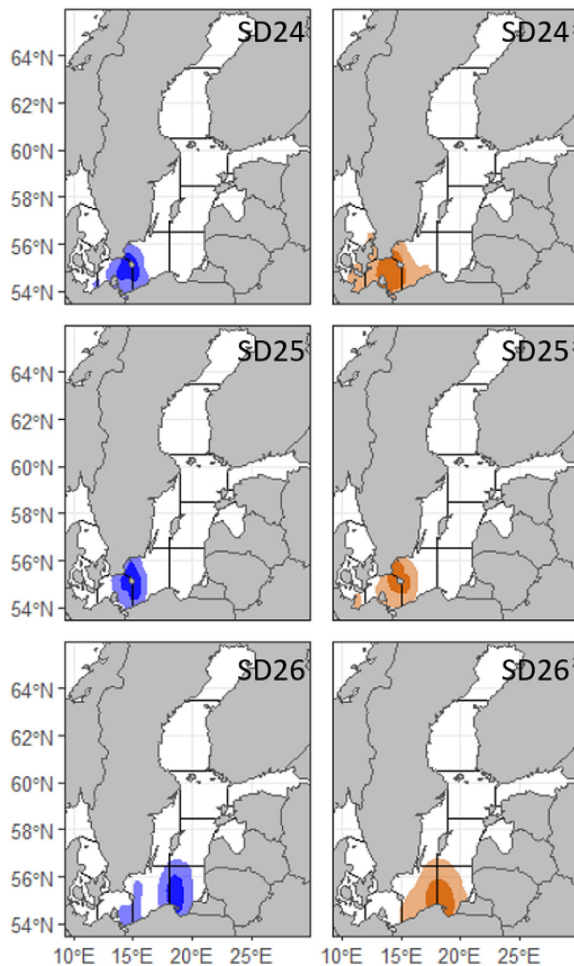


Fig. 7. As in Fig. 6, but for the contemporary dataset. Data shown are for cod recaptured during the spawning season (April to September; blue, left panels) and the feeding season (October to March; orange, right panels). See Fig. 6d for a map of the Baltic Sea with ICES subdivisions

4. DISCUSSION

The re-analysis of historical tagging data combined with contemporary data enabled the description of movement patterns and area utilisation of EBC for both time periods. In agreement with our expectations, this study has shown that in the historical period, cod released in the central and northern areas of the Baltic generally travelled greater distances than cod released in the southern Baltic. Furthermore, data from the recent tagging experiment indicated that the historical movement patterns in the southern Baltic have been generally maintained over time. The results from the KDE analysis confirmed the patterns described in previous research (Aro 1989, 2002, Bagge & Steffensen 1989, Robichaud & Rose 2004), highlighting 2 types of move-

ment behaviours for EBC: sedentary (i.e. cod recaptured year-round within the area of release) and migratory (i.e. cod covering larger distances, probably linked to spawning in areas separated from the feeding grounds).

The data show that management boundaries between SDs 24 and 25 are crossed all year round, both in the historical and in the contemporary period. However, this study also suggests that the percentage of cod released in SD 25 and recaptured in SD 24 has increased in the recent period. In the historical period, 6 and 7% of cod released in SD 25 were recaptured in SD 24 during the spawning and feeding seasons, respectively. On the other hand, in the recent period, 30 and 41% of cod released in SD 25 were recaptured in SD 24 during the spawning and feeding seasons, respectively. These findings suggest that the use of SD 24 by EBC has increased in the recent period, an observation that supports our expectations of greater use of southern areas and could result in an increased likelihood of mixing between EBC and WBC in SD 24.

There can be limitations to the use of tagging data to quantify the degree of mixing in different areas, and these need to be acknowledged. For instance, differences in tagging location might influence the likelihood of recapture in a different area from that of release. In fact, in the recent tagging experiment, cod in SD 25 were mainly tagged in proximity to the border with SD 24, thus potentially increasing the possibility of cod released in SD 25 being recaptured in SD 24. However, these results are in line with recent increases in the occurrence of EBC in SD 24, as estimated by shape analysis of archived otoliths (Hüssy et al. 2016). The KDE analysis results also support this finding. In the historical period, during the spawning season, core areas suggested that cod released in SDs 24 and 25 were mainly recaptured in the Arkona Basin (i.e. spawning area of WBC) and in the Bornholm Basin (i.e. main spawning area for the EBC), respectively. The bimodal core areas observed for cod released in SD 26 indicate utilisation of both the Bornholm Basin and Gdansk Deep as the main spawning areas, with cod likely moving between the 2 areas. In the contemporary period, the home ranges were similar to the historical period, although core areas of cod released in SDs 24 and 25 were concentrated around Bornholm Island (SDs 24 and 25) during the spawning season, whilst in the past, core areas concentrated mainly in the respective area of release. Since EBC currently also inhabit SD 24 (Hüssy et al. 2016), these results could add evidence that, con-

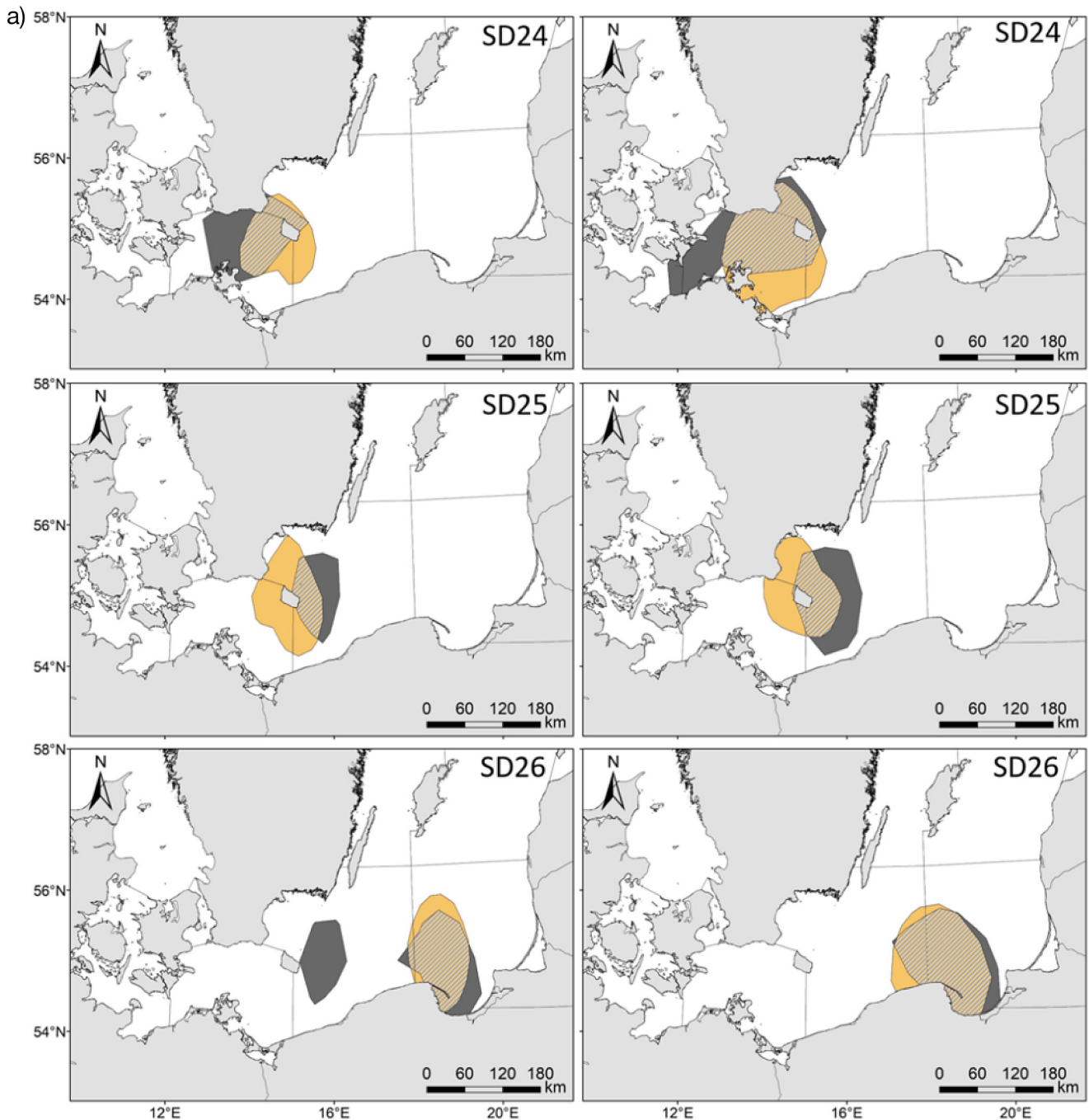


Fig. 8 (continued on next page).

Fig. 8. Overlap between the historical (grey) and contemporary (orange) data for cod recaptured during the spawning season (left panels) and the feeding season (right panels). The 50% kernel core areas are shown in panel (a) and the 95% kernel home ranges are shown in panel (b) for cod released in subdivision (SD) 24, 25 and 26. See Fig. 6d for a map of the Baltic Sea with ICES subdivisions

trary to historical assumptions (Bagge et al. 1994), EBC spawn in the Arkona Sea as shown by Hüsey et al. (2016) and Hemmer-Hansen et al. (2019).

Recaptures from the historical period indicate long-distance movements from the northern and central

Baltic towards the southern Baltic, which are probably linked to spawning in the Bornholm Basin (i.e. the main EBC spawning area). These movements are not observed in the contemporary dataset, as individuals appear to remain in the south. As recent tagging

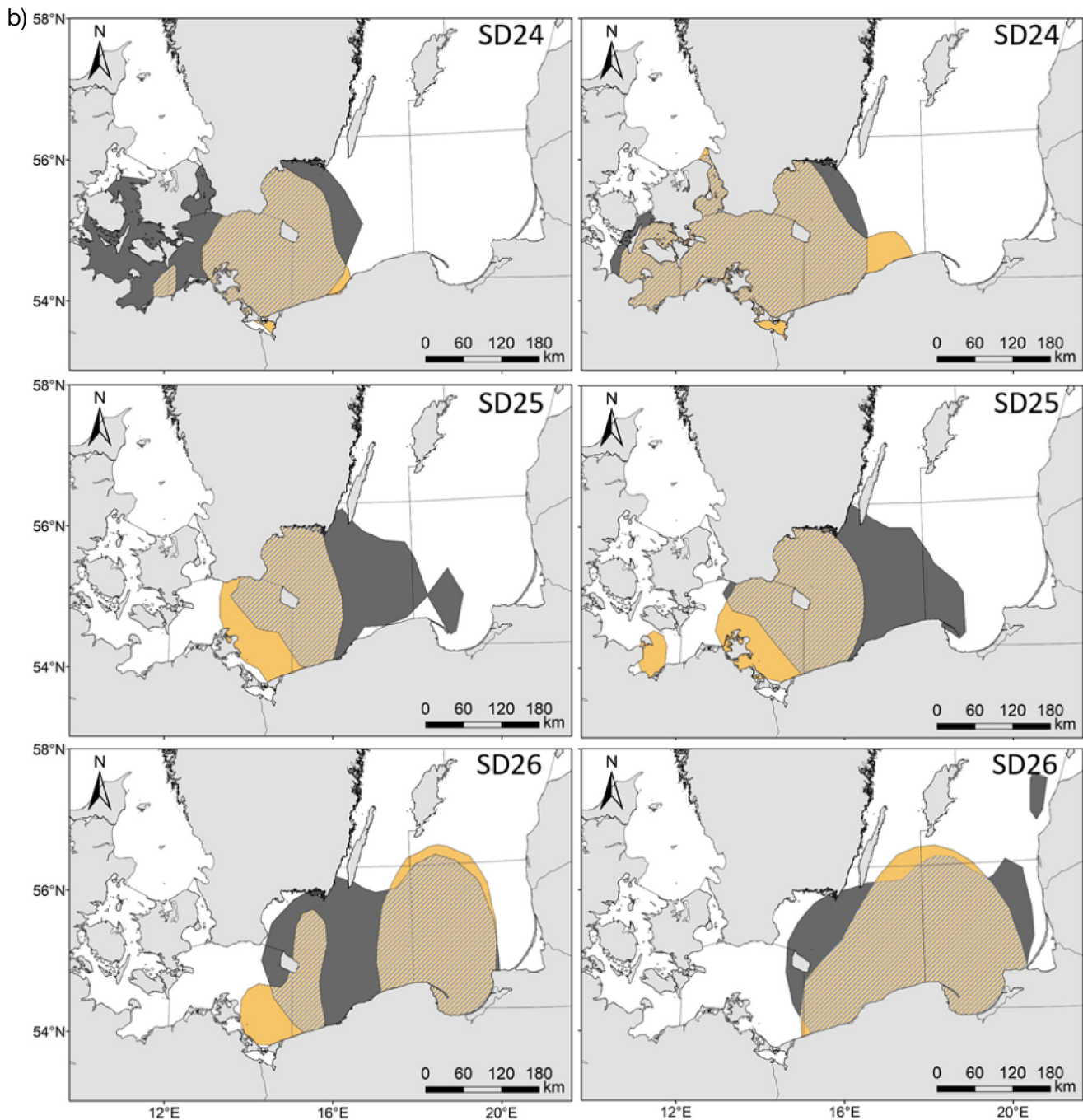


Fig. 8 (continued)

was only conducted in the south, no clear conclusions on changes in movement rates of EBC, or a loss of his migratory pathway to the north, can be made. Thus, further work will be needed to test our hypothesis around changes in movement rates of EBC; in particular, there is a need to tag EBC in northern and central areas.

One interesting finding during the historical period is the presence of sedentary groups in the northern and central Baltic. A year-round resident population in the northern Baltic could be explained by the presence of juveniles (i.e. individuals that have not reached sexual maturity) that do not participate in a spawning migration. In fact, GAM results

Table 2. 50 % kernel density estimation (KDE) core areas ($\times 1000 \text{ km}^2$) and 95 % KDE home ranges ($\times 1000 \text{ km}^2$) for the historical and contemporary datasets during the spawning and feeding seasons by subdivision of release (SD_{rl}). Spatial overlap (km^2) is the overlap between historical and contemporary kernel core areas and between historical and contemporary home ranges. Spatial overlap (%) is the percentage of historical kernel core areas, and home ranges, in overlap with the contemporary core areas, and home ranges, respectively

Season	SD_{rl}	KDE 50 %			
		Historical (km^2)	Contemporary (km^2)	Spatial overlap (km^2)	Spatial overlap (%)
Spawning	24	12.7	11.4	6.9	54.4
	25	7.8	13.1	3.8	48.5
	26	19.4	12.8	10.2	52.5
	27	31.4			
	28.2	29.2			
	29	93.5			
	30	78.5			
	32	12			
Feeding	24	21.7	20.9	13.8	63.5
	25	13.5	12.6	6.2	45.9
	26	18	18.3	15.9	88.0
	27	21.9			
	28.2	25.5			
	29	21.7			
	30	24.6			
	32	7.1			
Season	SD_{rl}	KDE 95 %			
		Historical (km^2)	Contemporary (km^2)	Spatial overlap (km^2)	Spatial overlap (%)
Spawning	24	61.6	35.5	34.6	56.2
	25	48.4	32.8	24.6	50.7
	26	69.6	55	45.8	65.8
	27	94.9			
	28.2	88.7			
	29	240.3			
	30	264.9			
	32	28.2			
Feeding	24	57.8	57.8	52.4	90.6
	25	56	40.5	30.9	55.2
	26	75.9	62.6	58.8	77.5
	27	77.7			
	28.2	113.2			
	29	200.1			
	30	113.8			
	32	21.1			

suggested that smaller fish tended to be recovered at locations closer to their release positions than larger cod. However, 56 % of cod that stayed in this area had a length at release that exceeded the average length at maturation (i.e. 40 cm), indicating that individuals with sedentary behaviour also included adults. In addition, fish species are thought to skip spawning when in low body condition, as they may lack the necessary energetic reserves to successfully migrate or spawn (Jørgensen et al. 2006). Due to the

low salinity, fertilisation of the eggs was deemed impossible in the Åland Sea and further north. Previously, it was assumed that recruitment to these northern areas took place mostly through larval drift and the passive transport of young cod at times of strong influxes of water from the south (Otterlind 1983, 1984), rather than recruitment from a local population (Hinrichsen et al. 2017). However, spawning events have previously been observed in the Åland Sea (Otterlind 1976, Vallin et al. 1999), suggesting the presence of a locally reproducing population.

Some active northward migration of young cod may take place, although migration of cod from the central and southern parts of the Baltic proper to the Åland Sea was negligible according to the historical tagging results. Due to biological problems (i.e. high tagging mortality of smaller fish), it was not possible to effectively tag cod smaller than 20 cm in total length; therefore, active northern migration of young cod could have been missed in the historical period. More information is needed on oceanographic processes, larval drift and possible active adult migration towards the Åland Sea to understand the possible connectivity between these areas. Preliminary results indicate that some individuals from the Åland Sea have higher successful fertilisation at lower salinities compared to cod from the Gotland and Bornholm areas (U. Bergström et al. unpublished). Thus, although the results of our study for the northern Baltic area are restricted to the historical period, they could contribute evi-

dence to the presence of a sub-population of cod that remain and spawn in the Åland Sea. Preliminary genetic studies showed some level of separation, although not very distinct, of cod in this area (U. Bergström et al. unpublished). Further genetic studies are needed to confirm the possible presence of a resident population in the area of the Åland Sea.

For cod released in SD 32 (Gulf of Finland), home range analyses indicate a year-round spatial distinction from the home ranges of cod released in other

Baltic areas. These cod are found to exhibit a sedentary behaviour and are recaptured mainly in SD 32 during both feeding and spawning seasons. However, in other studies, the migration of adult cod southwards was evident and linked to spawning (Aro & Sjöblom 1983, Otterlind 1985). These differences are likely due to the fact that in the present study tagging experiments in SD 32 were limited compared to previous evaluations. This is because the present study did not include transportation experiments of marked cod to other locations (Aro & Sjöblom 1983, Otterlind 1985). Further work to digitise additional historical records from this area would be required to examine this discrepancy.

GAMs were used to account for the effect of DAL on the movement patterns of cod during the historical period. Different patterns were found for cod released during the spawning or feeding periods, probably linked to the proximity to spawning grounds and presence of differing behavioural strategies (i.e. sedentary and migratory). Cod released during the spawning period (quarter 2) in SDs 25, 26 and 28.2 were potentially already in proximity to EBC spawning grounds, while cod released in SD 24 were in proximity to one of the WBC spawning grounds (Bleil & Oeberst 2002). The results indicate that cod released during the spawning period in SDs 24, 26, 29 and 32 were recaptured closer to positions of release all year round. These findings suggest that these cod were sedentary, probably spawning in the area of release or not participating in a spawning migration (e.g. cod released during the spawning period in SD 29). For cod released during the spawning period in SDs 25, 27 and 28.2, the distance between release and recapture positions increased through time, suggesting that cod moved away from the area of release but did not necessarily return.

Cod released during the feeding period (Quarter 4) in SDs 24, 26, 27 and 28.2 showed approximately an annual pattern in the distance moved from the release. The presence of this relationship between d and DAL indicates that cod moved away from the area of release, probably to reach spawning grounds, and then returned a year later, suggesting homing behaviour to both feeding and spawning areas. Cod released in SDs 25 and 29 during the feeding period moved away from the area of release but did not appear to return.

In a true migratory population, a clear cyclical signal would be expected as individuals move away and return. This is lacking in some areas, which could be due to the presence of different movement behaviours, as indicated by the KDE analysis of the histori-

cal dataset. Since conventional tagging data consist of only 2 positions, release and recapture, GAMs may have low power when describing temporal cyclic patterns of migration, especially when a mix of behaviours is present (Espeland et al. 2008). Individuals that alternate between spawning and feeding seasons, as well as those that display sedentary behaviour, would obscure this pattern (Espeland et al. 2008).

Our findings, using quantitative methods to re-analyse historical tagging data combined with contemporary data, provide additional information on general movement patterns between different areas of the Baltic Sea. However, caution is advised regarding some limitations of our analysis. Unfortunately, as is the case for many historical tagging studies, there is a lack of spatially resolved fisheries effort data. Historical catch data do show lower catches in the northern Baltic Sea compared to the south, which could have prevented a full detection of a northward migration of cod due to a lower probability of recapture in the northern Baltic Sea. In addition, if fishing effort is higher in one area (e.g. SD 24) compared to others, it might explain any lack of change in the movements of tagged cod. Further work is needed to account for spatio-temporal patterns in fishing effort within our analysis, which might result in an overrepresentation of some recapture locations (Wright et al. 2006). In addition, conventional mark-recapture data are restricted to information on release and recapture, but nothing is known about movement between these 2 points. Application of dynamic migration models may enhance our knowledge of movements on a smaller time scale. Data-storage tags also offer an advanced method for gathering high-resolution data on demersal fish movements in both the horizontal and vertical dimension (Griffiths et al. 2018) and allow behaviour to be related to the physical environment (Patterson et al. 2009). Combining results from conventional tagging data with fine-scale movement patterns of individual cod would facilitate further study on migration and how it might be related to changes in the environment.

Failure to incorporate information on the meta-population dynamics of marine fishes in fisheries management may increase the risk of local sub-populations depletion that may eventually contribute to stock collapse (Hilborn et al. 2003, Kritzer & Sale 2004, Heath et al. 2008, Neat et al. 2014). Our study suggests that possible sub-populations in the Baltic Sea (e.g. northern and southern Baltic cod) may have existed in the historical period, with individuals

experiencing different patterns of movement. This means that cod from different areas of the Baltic may have experienced different salinity, oxygen and temperature conditions (Mion et al. 2021). The applied implications of this are that the removal of individuals in one area could be more costly than in other areas, so a spatial adjustment of exploitation strategies, such as the setting of a maximum sustainable yield for each spatial unit, may be required to ensure sustainable harvesting (Holmes et al. 2014). Future management of fisheries, especially where metapopulations exist or where mixing between different stocks occurs, should implement the use of tagging data in area-based assessment models (e.g. stock synthesis; Methot & Wetzel 2013) to provide a more reliable estimation of stock status.

Our results show that re-analysing historical conventional tagging data can still provide important insights on movement patterns and area utilisation that can be readily compared with contemporary data. In doing so, the biological knowledge of a stock is increased, which could inform future management actions.

Acknowledgements. We are grateful to all the fishers, anglers and technical staff involved in data entering, tagging, collecting and processing of the samples used in this study and to Alessandro Orio (SLU) for R advice. We thank 3 anonymous reviewers for their constructive comments that greatly improved the manuscript. This study was funded by Baltic-Sea2020 (<http://balticsea2020.org>) through the project 'Tagging Baltic Cod' (TABACOD). We also thank the Swedish Agency for Marine and Water Management for financing the compilation of the Swedish data.

LITERATURE CITED

- Andersen Ø, Wetten OF, De Rosa MC, Andre C and others (2009) Haemoglobin polymorphisms affect the oxygen-binding properties in Atlantic cod populations. *Proc R Soc B* 276:833–841
- Aro E (1989) A review of fish migration patterns in the Baltic. *Rapp P-V Reün Cons Int Explor Mer* 190:72–96
- Aro E (2002) Fish migration studies in the Baltic Sea—a historical review. *ICES J Mar Sci* 215:361–370
- Aro E, Sjöblom V (1983) Cod off the coast of Finland in 1974–82. *ICES CM* 1983/J:25
- Bagge O, Steffensen E (1989) Stock identification of demersal fish in the Baltic. *Rapp P-V Reün Cons Int Explor Mer* 190:3–16
- Bagge O, Thurow F, Steffensen E, Bay J (1994) The Baltic cod. *Dana* 10:1–28
- Bartolino V, Tian H, Bergström U, Jounela P and others (2017) Spatio-temporal dynamics of a fish predator: density-dependent and hydrographic effects on Baltic Sea cod population. *PLOS ONE* 12:e0172004
- Bleil M, Oeberst R (2002) Spawning areas of the cod stock in the western Baltic Sea and minimum length at maturity. *Arch Fish Mar Res* 49:243–258
- Bleil M, Oeberst R (2004) Comparison of spawning activities in the mixing area of both the Baltic cod stocks, Arkona Sea (ICES Sub-divisions 24), and the adjacent areas in the recent years. *ICES Document CM* 2004/L:08
- Burt WH (1943) Territoriality and home range concepts as applied to mammals. *J Mammal* 24:346–352
- Calenge C (2015) Home range estimation in R: the adehabitatHR package. R Package Version 0.3.23. <http://cran.r-nexr.com/web/packages/adehabitat/adehabitat.pdf>
- Cardinale M, Modin J (1999) Changes in size-at-maturity of Baltic cod (*Gadus morhua*) during a period of large variations in stock size and environmental conditions. *Fish Res* 41:285–295
- Cardinale M, Svedäng H (2011) The beauty of simplicity in science: Baltic cod stock improves rapidly in a 'cod hostile' ecosystem state. *Mar Ecol Prog Ser* 425:297–301
- Carstensen J, Andersen JH, Gustafsson BG, Conley DJ (2014) Deoxygenation of the Baltic Sea during the last century. *Proc Natl Acad Sci USA* 111:5628–5633
- Casini M, Hjelm J, Molinero JC, Lövgren J and others (2009) Trophic cascades promote threshold-like shifts in pelagic marine ecosystems. *Proc Natl Acad Sci USA* 106:197–202
- Dean MJ, Hoffman WS, Zemeckis DR, Armstrong MP (2014) Fine-scale diel and gender-based patterns in behaviour of Atlantic cod (*Gadus morhua*) on a spawning ground in the Western Gulf of Maine. *ICES J Mar Sci* 71:1474–1489
- Drinkwater K (2005) The response of Atlantic cod (*Gadus morhua*) to future climate change. *ICES J Mar Sci* 62:1327–1337
- Drinkwater K (2009) Comparison of the response of Atlantic cod (*Gadus morhua*) in the high-latitude regions of the North Atlantic during the warm periods of the 1920s–1960s and the 1990s–2000s. *Deep Sea Res II* 56:2087–2096
- Eero M, Vinther M, Haslob H, Huwer B, Casini M, Storr-Poulsen M, Köster FW (2012) Spatial management of marine resources can enhance the recovery of predators and avoid local depletion of forage fish. *Conserv Lett* 5:486–492
- Eero M, Hjelm J, Behrens J, Buchmann K and others (2015) Eastern Baltic cod in distress: biological changes and challenges for stock assessment. *ICES J Mar Sci* 72:2180–2186
- Engelhard GH, Righton DA, Pinnegar JK (2014) Climate change and fishing: a century of shifting distribution in North Sea cod. *Glob Change Biol* 20:2473–2483
- Engelhardt J, Frisell O, Gustavsson H, Hansson T, Sjöberg R, Collier TK, Balk L (2020) Severe thiamine deficiency in eastern Baltic cod (*Gadus morhua*). *PLOS ONE* 15:e027201
- Espeland SH, Olsen EM, Knutsen H, Gjøsæter J, Danielssen D, Stenseth NC (2008) New perspectives on fish movement: kernel and GAM smoothers applied to a century of tagging data on coastal Atlantic cod. *Mar Ecol Prog Ser* 372:231–241
- Griffiths CA (2019) Using electronic tagging data to investigate the individual-, population- and community-level consequences of movement in free-roaming marine fish. Joint PhD thesis, University of Sheffield and University of Tasmania, Hobart
- Griffiths CA, Patterson TA, Blanchard JL, Righton DA, Wright SR, Pitchford JW, Blackwell PG (2018) Scaling marine fish movement behavior from individuals to populations. *Ecol Evol* 8:7031–7043
- Heath MR, Kunzlik PA, Gallego A, Holmes SJ, Wright PJ

- (2008) A model of meta-population dynamics for North Sea and West of Scotland cod—the dynamic consequences of natal fidelity. *Fish Res* 93:92–116
- ✦ Hemmer-Hansen J, Hüsey K, Baktoft H, Huwer B and others (2019) Genetic analyses reveal complex dynamics within a marine fish management area. *Evol Appl* 12:830–844
- ✦ Hilborn R, Quinn TP, Schindler DE, Rogers DE (2003) Bio-complexity and fisheries sustainability. *Proc Natl Acad Sci USA* 100:6564–6568
- ✦ Hinrichsen HH, von Dewitz B, Lehmann A, Bergstrom U, Hüsey K (2017) Spatio-temporal dynamics of cod nursery areas in the Baltic Sea. *Prog Oceanogr* 155:28–40
- ✦ Holmes SJ, Miller CP, Fryer RJ, Wright PJ (2014) Gadoid dynamics: differing perceptions when contrasting stock vs. population trends and its implications to management. *ICES J Mar Sci* 71:1433–1442
- ✦ Horbowy J, Podolska M, Nadolna-Altyń K (2016) Increasing occurrence of anisakid nematodes in the liver of cod (*Gadus morhua*) from the Baltic Sea: Does infection affect the condition and mortality of fish? *Fish Res* 179:98–103
- ✦ Hüsey K (2011) Review of western Baltic cod (*Gadus morhua*) recruitment dynamics. *ICES J Mar Sci* 68:1459–1471
- ✦ Hüsey K, Hinrichsen HH, Eero M, Mosegaard H, Hemmer-Hansen J, Lehmann A, Lundgaard LS (2016) Spatio-temporal trends in stock mixing of eastern and western Baltic cod in the Arkona Basin and the implications for recruitment. *ICES J Mar Sci* 73:293–303
- Hüsey K, Casini M, Haase S, Hilvarsson A and others (2020) Tagging Baltic Cod – TABACOD. Eastern Baltic cod: solving the ageing and stock assessment problems with combined state-of-the-art tagging methods. DTU Aqua Report no. 368-2020. National Institute of Aquatic Resources, Technical University of Denmark, Copenhagen
- ICES (2014) Report of the Baltic Fisheries Assessment Working Group (WGBFAS), 3–10 April 2014, ICES HQ, Copenhagen, Denmark. *ICES CM* 2014/ACOM:10
- ICES (2020) Baltic Fisheries Assessment Working Group (WGBFAS). *ICES Sci Rep* 2:45
- ✦ ICES (2021) Cod (*Gadus morhua*) in subdivisions 24–32, eastern Baltic stock (eastern Baltic Sea). Report of the ICES Advisory Committee. ICES advice on fishing opportunities, catch, and effort. Baltic Sea ecoregion, cod. 27.24-32, <https://doi.org/10.17895/ices.advice.7745>
- ✦ Jørgensen C, Ernande B, Fiksen Ø, Dieckmann U (2006) The logic of skipped spawning in fish. *Can J Fish Aquat Sci* 63:200–211
- ✦ Köster FW, Möllmann C, Hinrichsen HH, Wieland K and others (2005) Baltic cod recruitment – the impact of climate variability on key processes. *ICES J Mar Sci* 62:1408–1425
- ✦ Köster FW, Huwer B, Hinrichsen HH, Neumann V and others (2017) Eastern Baltic cod recruitment revisited—dynamics and impacting factors. *ICES J Mar Sci* 74:3–19
- ✦ Kritzer JP, Sale PF (2004) Metapopulation ecology in the sea: from Levins' model to marine ecology and fisheries science. *Fish Fish* 5:131–140
- ✦ Mackenzie BR, Gislason H, Möllmann C, Köster FW (2007) Impact of 21st century climate change on the Baltic Sea fish community and fisheries. *Glob Change Biol* 13:1348–1367
- ✦ Meier HEM, Eilola K, Almroth-Rosell E, Schimanke S and others (2019) Disentangling the impact of nutrient load and climate changes on Baltic Sea hypoxia and eutrophication since 1850. *Clim Dyn* 53:1145–1166
- ✦ Metcalfe JD (2006) Fish population structuring in the North Sea: understanding processes and mechanisms from studies of the movements of adults. *J Fish Biol* 69:48–65
- ✦ Methot RD, Wetzel CR (2013) Stock synthesis: a biological and statistical framework for fish stock assessment and fishery management. *Fish Res* 142:86–99
- ✦ Mion M, Hilvarsson A, Hüsey K, Krumme U and others (2020) Historical growth of Eastern Baltic cod (*Gadus morhua*): setting a baseline with international tagging data. *Fish Res* 223:105442
- ✦ Mion M, Haase S, Hemmer-Hansen J, Hilvarsson A and others (2021) Multidecadal changes in fish growth rates estimated from tagging data: a case study from the Eastern Baltic cod (*Gadus morhua*, Gadidae). *Fish Fish* 22:413–427
- ✦ Möllmann C, Diekmann R, Müller-Karulis B, Kornilovs G, Plikshs M, Axe P (2009) Reorganization of a large marine ecosystem due to atmospheric and anthropogenic pressure: a discontinuous regime shift in the Central Baltic Sea. *Glob Change Biol* 15:1377–1393
- ✦ Neat FC, Bendall V, Berx B, Wright PJ and others (2014) Movement of Atlantic cod around the British Isles: implications for finer scale stock management. *J Appl Ecol* 51:1564–1574
- ✦ Nissling A, Kryvi H, Vallin L (1994) Variation in egg buoyancy of Baltic cod *Gadus morhua* and its implications for egg survival in prevailing conditions in the Baltic Sea. *Mar Ecol Prog Ser* 110:67–74
- ✦ Nordeide JT (1998) Coastal cod and Northeast Arctic cod – Do they mingle at the spawning grounds in Lofoten? *Sarsia* 83:373–379
- ✦ Orio A, Bergström U, Florin AB, Lehmann A, Šics I, Casini M (2019) Spatial contraction of demersal fish populations in a large marine ecosystem. *J Biogeogr* 46:633–645
- Otterlind G (1976) Fish stocks and fish migration in the Baltic Sea environment. *Ambio Spec Rep* 4:89–101
- Otterlind G (1983) Torsken och Bottenhavet. *Yrkesfiskaren* 7:10–11
- Otterlind G (1984) Cod migration and transplantation experiments. *ICES CM* 1984/J:13
- ✦ Otterlind G (1985) Cod migration and transplantation experiments in the Baltic. *J Appl Ichthyol* 1:3–16
- ✦ Pálsson OK, Thorsteinsson V (2003) Migration patterns, ambient temperature, and growth of Icelandic cod (*Gadus morhua*): evidence from storage tag data. *Can J Fish Aquat Sci* 60:1409–1423
- ✦ Patterson TA, Basson M, Bravington MV, Gunn JS (2009) Classifying movement behaviour in relation to environmental conditions using hidden Markov models. *J Anim Ecol* 78:1113–1123
- Powell RA (2000) Animal home ranges and territories and home range estimators. In: Boitani L, Fuller TH (eds) *Research techniques in animal ecology: controversies and consequences*. Columbia University, New York, NY, p 65–110
- R Core Team (2020) R: a language and environment for statistical computing. R Foundation for Statistical Computing, Vienna
- ✦ Reusch TBH, Dierking J, Andersson H, Bonsdorff E and others (2018) The Baltic Sea as a time machine for the future coastal ocean. *Sci Adv* 4:eaar8195
- ✦ Righton D, Quayle V, Hetherington S, Burt G (2007) Movements and distribution of cod (*Gadus morhua*) in the southern North Sea and English Channel: results from conventional and electronic tagging experiments. *J Mar*

- Biol Assoc UK 87:599–613
- Righton D, Metcalfe J (2019) Migration. In: Rose GA (ed) Atlantic cod. A bio-ecology. John Wiley & Sons, Hoboken, NJ, p 169–218
- ✦ Robichaud D, Rose GA (2004) Migratory behaviour and range in Atlantic cod: inference from a century of tagging. *Fish Fish* 5:185–214
- ✦ Rogers LA, Olsen EM, Knutsen H, Stenseth NC (2014) Habitat effects on population connectivity in a coastal seascape. *Mar Ecol Prog Ser* 511:153–163
- ✦ Rose GA, Rowe S (2015) Northern cod comeback. *Can J Fish Aquat Sci* 72:1789–1798
- ✦ Seaman DE, Powell RA (1996) An evaluation of the accuracy of kernel density estimators for home range analysis. *Ecology* 77:2075–2085
- ✦ Sólmundsson J, Jónsdóttir IG, Björnsson B, Ragnarsson SA, Tómasson GG, Thorsteinsson V (2015) Home ranges and spatial segregation of cod *Gadus morhua* spawning components. *Mar Ecol Prog Ser* 520:217–233
- Vallin L, Nissling A, Westin L (1999) Potential factors influencing reproductive success of Baltic cod, *Gadus morhua*: a review. *Ambio* 28:92–99
- ✦ Wieland K, Jarre-Teichmann A, Horbowa K (2000) Changes in the timing of spawning of Baltic cod: possible causes and implications for recruitment. *ICES J Mar Sci* 57:452–464
- ✦ Wood SN (2003) Thin-plate regression splines. *J R Stat Soc B* 65:95–114
- Wood SN (2006) Generalized additive models: an introduction with R. CRC/Chapman and Hall, Boca Raton, FL
- ✦ Worton BJ (1987) A review of models of home range for animal movement. *Ecol Model* 38:277–98
- ✦ Worton BJ (1989) Kernel methods for estimating the utilization distribution in home-range studies. *Ecology* 70:164–168
- ✦ Wright PJ, Galley E, Gibb IM, Neat FC (2006) Fidelity of adult cod to spawning grounds in Scottish waters. *Fish Res* 77:148–158
- ✦ Zemeckis DR, Martins D, Kerr LA, Cadrin SX (2014) Stock identification of Atlantic cod (*Gadus morhua*) in US waters: an interdisciplinary approach. *ICES J Mar Sci* 71:1490–1506

Editorial responsibility: Franz Mueter,
Juneau, Alaska, USA
Reviewed by: 3 anonymous referees

Submitted: August 30, 2021
Accepted: March 28, 2022
Proofs received from author(s): May 9, 2022