

# Innovative use of sclerochronology in marine resource management

Organizers: E. Hunter, V. V. Laptikhovsky, P. R. Hollyman

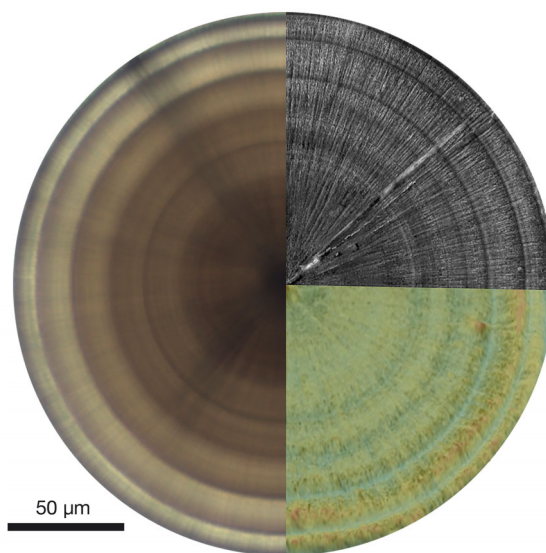
Editors: Y. Cherel, S. Somarakis, S. R. Wing

Marine Ecology Progress Series Vol. 598, pages 153–291

This Theme Section represents a selection of studies exploring the innovative use of sclerochronology in resource management. Topics covered showcase the potential for sclerochronology to provide a deeper understanding of the interaction between marine life and its environment.

—————→  
Composite image of 2 statoliths from the same *Buccinum undatum* specimen displaying different sclerochronological techniques.

Photo credit: Philip Hollyman



## CONTENTS

**Hunter E, Laptikhovsky VV, Hollyman PR**

*INTRODUCTION*: Innovative use of sclerochronology in marine resource management ..... 155–158

**Doubleday ZA, Cliff J, Izzo C, Gillanders BM**

Untapping the potential of sulfur isotope analysis in biominerals ..... 159–166

**Darnaude AM, Hunter E**

Validation of otolith  $\delta^{18}\text{O}$  values as effective natural tags for shelf-scale geolocation of migrating fish ..... 167–185

**Schilling HT, Reis-Santos P, Hughes JM,**

**Smith JA, Everett JD, Stewart J,**

**Gillanders BM, Suthers IM**

Evaluating estuarine nursery use and life history patterns of *Pomatomus saltatrix* in eastern Australia ..... 187–199

**Barrow J, Ford J, Day R, Morrongiello J**

Environmental drivers of growth and predicted effects of climate change on a commercially important fish, *Platycephalus laevigatus* ..... 201–212

**Fisher M, Hunter E**

Digital imaging techniques in otolith data capture, analysis and interpretation ..... 213–231

**Seeley ME, Walther BD**

Facultative oligohaline habitat use in a mobile fish inferred from scale chemistry ..... 233–245

**Perales-Raya C, Nande M, Roura A,**

**Bartolomé A, Gestal C, Otero JJ,**

**García-Fernández P, Almansa E**

Comparative study of age estimation in wild and cultured *Octopus vulgaris* paralarvae: effect of temperature and diet ..... 247–259

**Hollyman PR, Leng MJ, Chenery SRN,**

**Laptikhovsky VV, Richardson CA**

Statoliths of the whelk *Buccinum undatum*: a novel age determination tool ..... 261–271

**Laptikhovsky VV, Barrett CJ, Hollyman PR**

*REVIEW*: From coral reefs to whale teeth: estimating mortality from natural accumulations of skeletal materials ..... 273–291