

Community composition of bacterial biofilms on two submerged macrophytes and an artificial substrate in a pre-alpine lake

Melanie Hempel^{1,*}, Hans-Peter Grossart², Elisabeth M. Gross¹

¹Limnological Institute, Department of Biology, University of Konstanz, PO Box 659, 78457 Konstanz, Germany

²Leibniz Institute of Freshwater Ecology and Inland Fisheries (IGB), Department of Limnology of Stratified Lakes, Alte Fischerhuetten 2, 16775 Stechlin, Germany

*Email: hempelmelanie@web.de

Aquatic Microbial Ecology 58:79–94 (2009)

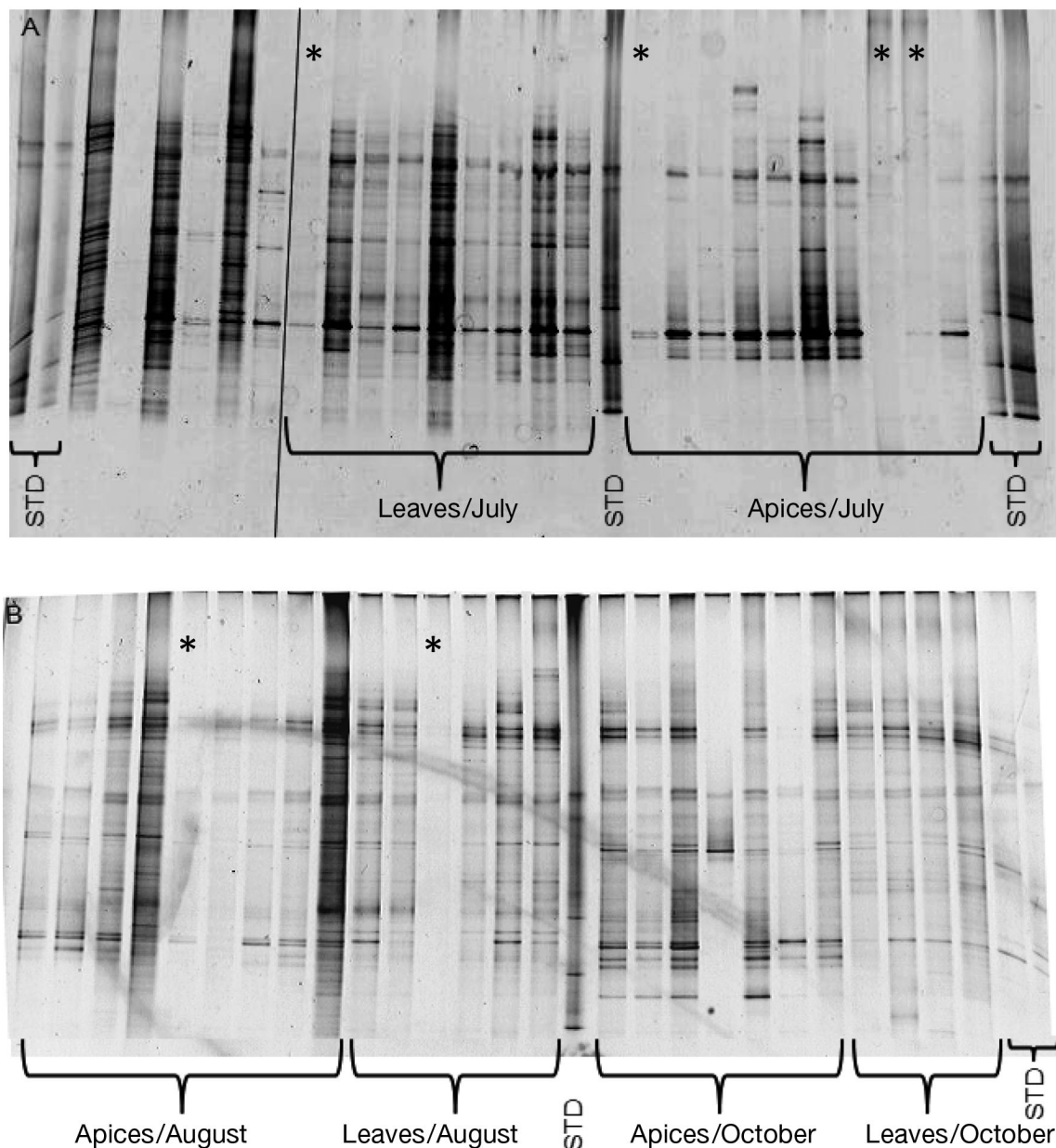


Fig. S1. *Myriophyllum spicatum*. DGGE profiles from amplified 16S rRNA gene fragments of the biofilm on apices and leaves. (A) July 2005; (B) August and October 2005. STD: standard. Lanes labeled with an asterisk were not used in the analysis

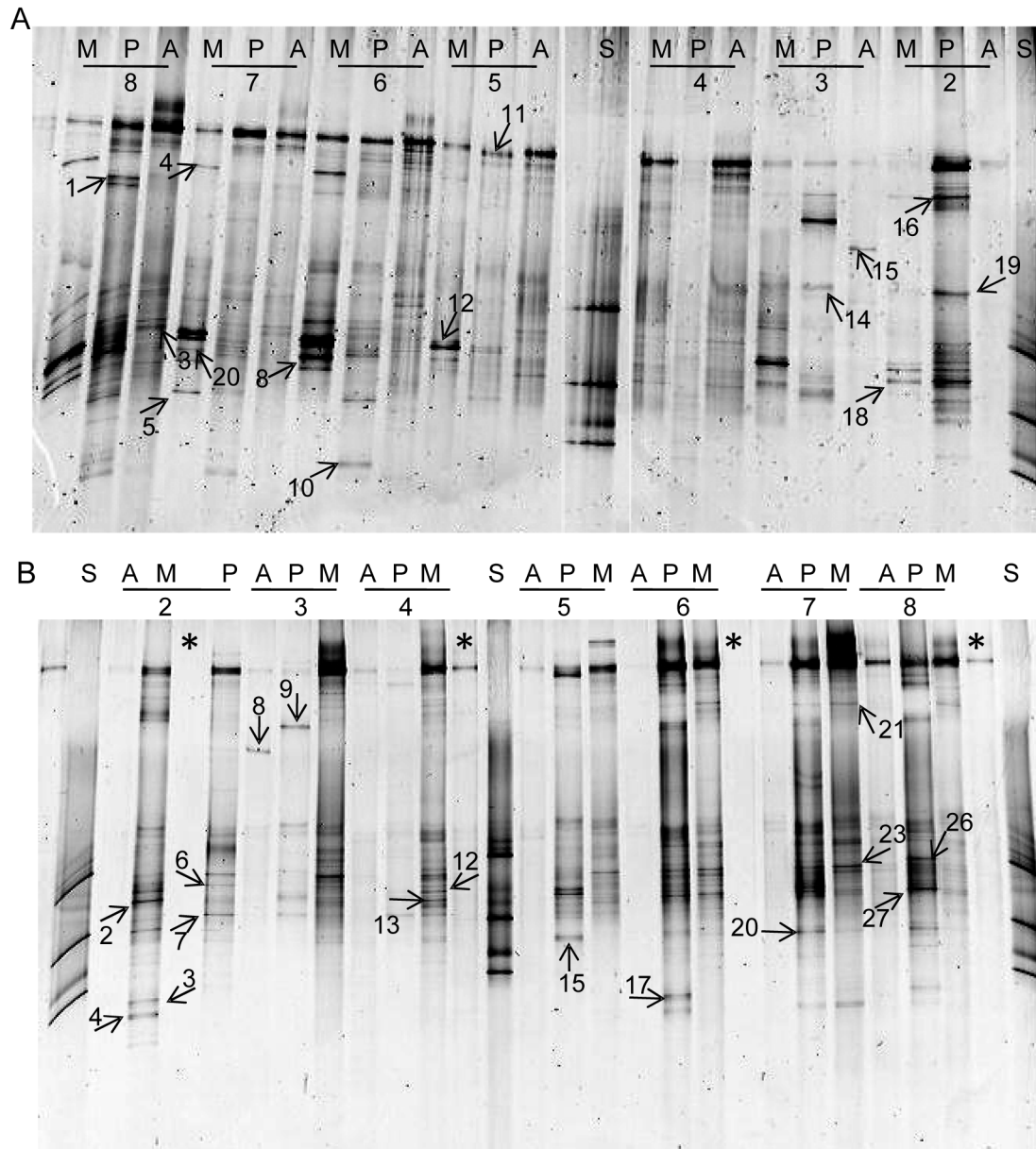


Fig. S2. *Myriophyllum spicatum* and *Potamogeton perfoliatus*. DGGE banding patterns and excised bands of *M. spicatum*, *P. perfoliatus*, and artificial substrates in 2006. (A) apices; (B) leaves. M: *M. spicatum*; P: *P. perfoliatus*; A: artificial substrates; S: standard; arrows: excised and sequenced bands. Numbers 1–7 indicate the sampling dates as listed in Table 2. Closest relatives based on BLAST search are listed in Table 3. Lanes marked with an asterisk were not used in the analysis