

Tintinnid community structure in the eastern equatorial Indian Ocean during the spring inter-monsoon period

Cuixia Zhang, Jun Sun*, Dongxiao Wang, Shuqun Song, Xiaodong Zhang, Sonia Munir

*Corresponding author: phytoplankton@163.com

Aquatic Biology 26: 87–100 (2017)

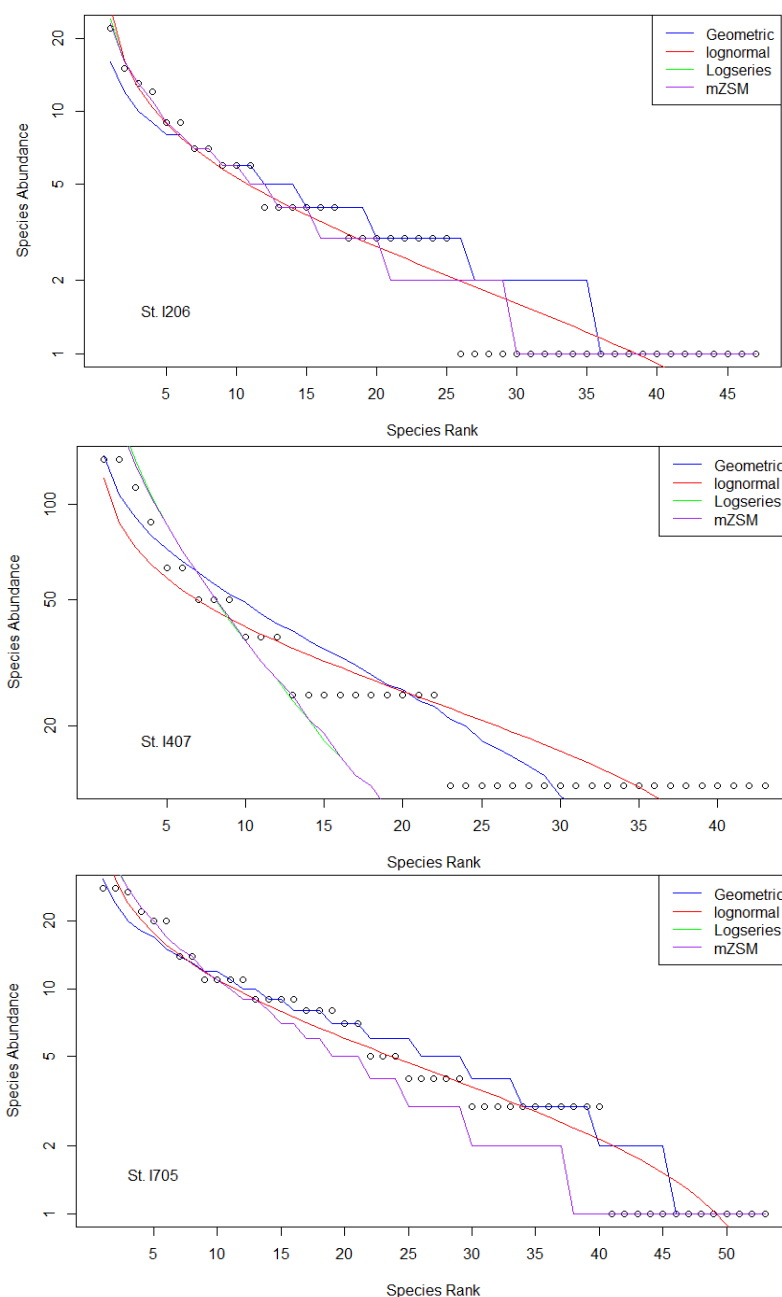


Fig. S1. The species abundance distribution for three representative samples. The circles are the actual observed abundances, the lines are the expected abundances from four theoretical distributions. The mZSM and lognormal distributions gave the best fit at the St. I206 and St. I407, respectively; but the best fit given by the geometric distribution at St. I705.

Table S1. List of species.

No.	Species name	No.	Species name	No.	Species name	No.	Species name	No.	Species name	No.	Species name
1	<i>Acanthostomella lata</i>	22	<i>Codonella rapa</i>	43	<i>Dictyocysta spinosa</i>	64	<i>Helicostomella longa</i>	85	<i>Protorhabdonella striatura</i>	106	<i>Salpingella jugosa</i>
2	<i>Acanthostomella minutissima</i>	23	<i>Codonella tropica</i>	44	<i>Dictyocysta</i> sp.	65	<i>Ormosella apsteini</i>	86	<i>Rhabdonella amor</i>	107	<i>Salpingella minutissima</i>
3	<i>Albatrossiella agassizi</i>	24	<i>Codonellopsis ecaudata</i>	45	<i>Epiplocyclus bruhni</i>	66	<i>Ormosella bresslaui</i>	87	<i>Rhabdonella conica</i>	108	<i>Steenstrupiella gracilis</i>
4	<i>Albatrossiella minutissima</i>	25	<i>Codonellopsis morchella</i>	46	<i>Epiplocyclus calyx</i>	67	<i>Ormosella schmidtii</i>	88	<i>Rhabdonella cornucopia</i>	109	<i>Steenstrupiella intumescens</i>
5	<i>Amphorides amphora</i>	26	<i>Codonellopsis orthoceras</i>	47	<i>Epiplocyclus constricta</i>	68	<i>Parundella aciculifera</i>	89	<i>Rhabdonella elegans</i>	110	<i>Steenstrupiella steenstrupii</i>
6	<i>Amphorides minor</i>	27	<i>Codonellopsis parva</i>	48	<i>Epiplocyclus exigua</i>	69	<i>Parundella caudata</i>	90	<i>Rhabdonella exilis</i>	111	<i>Stenosemella nivalis</i>
7	<i>Amphorides brandti</i>	28	<i>Codonellopsis pura</i>	49	<i>Epiplocyclus exquisita</i>	70	<i>Parundella aculeata</i>	91	<i>Rhabdonella lohmanni</i>	112	<i>Stenosemella pacifica</i>
8	<i>Amphorides quadrilineata</i>	29	<i>Codonellopsis pusilla</i>	50	<i>Epiplocyclus ralumensis</i>	71	<i>Parundella difficilis</i>	92	<i>Rhabdonella quantula</i>	113	<i>Tintinnopsis karajacensis</i>
9	<i>Amplectella angularis</i>	30	<i>Favella enrenbergii</i>	51	<i>Epiplocyclus undella</i>	72	<i>Parundella gigantea</i>	93	<i>Rhabdonella striata</i>	114	<i>Tintinnopsis tocaninensis</i>
10	<i>Amplectella nuda</i>	31	<i>Cyttarocyclus acutiformis</i>	52	<i>Epiplocyloides reticulata</i>	73	<i>Parundella inflata</i>	94	<i>Rhabdonella torta</i>	115	<i>Undella globosa</i>
11	<i>Ascampbelliella armilla</i>	32	<i>Cyttarocyclus ampulla</i>	53	<i>Eutintinnus angustatus</i>	74	<i>Parundella longa</i>	95	<i>Rhabdonella valdestriata</i>	116	<i>Undella hemispherica</i>
12	<i>Ascampbelliella protuberans</i>	33	<i>Dadayiella acutiformis</i>	54	<i>Eutintinnus apertus</i>	75	<i>Parundella minor</i>	96	<i>Rhabdonellopsis intermedia</i>	117	<i>Undella ostfeldi</i>
13	<i>Ascampbelliella urceolata</i>	34	<i>Dadayiella bulbosa</i>	55	<i>Eutintinnus birictus</i>	76	<i>Poroecus apicatus</i>	97	<i>Rhabdonellopsis longicaulis</i>	118	<i>Undella pistillum</i>
14	<i>Brandtiella palliata</i>	35	<i>Dadayiella cuspis</i>	56	<i>Eutintinnus fraknoii</i>	77	<i>Poroecus curtus</i>	98	<i>Salpingacantha ampla</i>	119	<i>Xystonella minuscula</i>
15	<i>Canthariella brevis</i>	36	<i>Dadayiella ganymedes</i>	57	<i>Eutintinnus haslae</i>	78	<i>Proplectella globosa</i>	99	<i>Salpingacantha exilis</i>	120	<i>Xystonella treforti</i>
16	<i>Canthariella truncata</i>	37	<i>Dictyocysta entzi</i>	58	<i>Eutintinnus lusus-undae</i>	79	<i>Proplectella ovata</i>	100	<i>Salpingacantha simplex</i>	121	<i>Xystonellopsis favata</i>
17	<i>Climacocyclus scalaria</i>	38	<i>Dictyocysta fenestrata</i>	59	<i>Eutintinnus medius</i>	80	<i>Proplectella parva</i>	101	<i>Salpingacantha unguiculata</i>	122	<i>Xystonellopsis dicymatica</i>
18	<i>Climacocyclus scalaroides</i>	39	<i>Dictyocysta occidentalis</i>	60	<i>Eutintinnus perminutus</i>	81	<i>Proplectella perpusilla</i>	102	<i>Salpingella faurei</i>	123	<i>Xystonellopsis paradoxa</i>
19	<i>Climacocyclus siphon</i>	40	<i>Dictyocysta polygonata</i>	61	<i>Eutintinnus stramentus</i>	82	<i>Proplectella tenuis</i>	103	<i>Salpingella decurtata</i>	124	<i>Xystonellopsis dahli</i>
20	<i>Codonaria cistellula</i>	41	<i>Dictyocysta reticulata</i>	62	<i>Eutintinnus tubulosus</i>	83	<i>Protorhabdonella curta</i>	104	<i>Salpingella glockentogeri</i>	125	<i>Xystonellopsis brandti</i>
21	<i>Codonella acuta</i>	42	<i>Dictyocysta pacifica</i>	63	<i>Eutintinnus turgescens</i>	84	<i>Protorhabdonella simplex</i>	105	<i>Salpingella gracilis</i>	126	<i>Xystonellopsis hastata</i>