

A molecular framework for the taxonomy and systematics of Japanese marine turbellarian flatworms (Platyhelminthes, Polycladida)

Tadasuke Tsunashima, Morio Hagiya, Riko Yamada, Tomoko Koito,
Nobuaki Tsuyuki, Shin Izawa, Keita Kosoba, Shiro Itoi*, Haruo Sugita

*Corresponding author: sitoi@nihon-u.ac.jp

Aquatic Biology 26: 159–167 (2017)

Table S1. List of polyclad samples used in this study

Sample number	Suborder	Family	Genus	Species	Sampling date	Sampling location		
						Lat.	Long.	Location
1	Acotylea	Hoploplanidae	<i>Hoploplana</i>	<i>villosa</i>	26 Apr 2013	34° 39' N	138° 57' E	Shimoda, Shizuoka (Ebisu Island)
2	Acotylea	Hoploplanidae	<i>Hoploplana</i>	<i>villosa</i>	26 Apr 2013	34° 39' N	138° 57' E	Shimoda, Shizuoka (Ebisu Island)
3	Acotylea	Stylochoplanidae	<i>Amemiyaia</i>	<i>pacifica</i>	26 Apr 2013	34° 39' N	138° 57' E	Shimoda, Shizuoka (Ebisu Island)
4	Acotylea	Stylochidae	<i>Leptostylochus</i>	<i>gracilis</i>	26 Apr 2013	34° 39' N	138° 57' E	Shimoda, Shizuoka (Ebisu Island)
5	Acotylea	Stylochidae	<i>Stylochus</i>	<i>ijimai</i>	07 Sep 2013	35° 15' N	139° 34' E	Hayama, Kanagawa
6	Acotylea	Ilyplanidae	<i>Discoplana</i>	<i>gigas</i>	07 Sep 2013	35° 15' N	139° 34' E	Hayama, Kanagawa
7	Acotylea	Planoceridae	<i>Planocera</i>	<i>multitentaculata</i>	22 Feb 2011	35° 15' N	139° 34' E	Hayama, Kanagawa
8	Acotylea	Planoceridae	<i>Planocera</i>	<i>multitentaculata</i>	22 Feb 2011	35° 15' N	139° 34' E	Hayama, Kanagawa
9	Acotylea	Planoceridae	<i>Planocera</i>	<i>multitentaculata</i>	06 Apr 2012	35° 15' N	139° 34' E	Hayama, Kanagawa
10	Acotylea	Callioplanidae	<i>Callioplana</i>	<i>marginata</i>	01 Nov 2013	34° 39' N	138° 59' E	Shimoda, Shizuoka (Tsumekizaki)
11	Acotylea	Callioplanidae	<i>Callioplana</i>	<i>marginata</i>	07 Sep 2013	35° 15' N	139° 34' E	Hayama, Kanagawa
12	Acotylea	Pseudostylochidae	<i>Pseudostylochus</i>	<i>obscurus</i>	14 Jun 2014	34° 39' N	138° 57' E	Shimoda, Shizuoka (Ebisu Island)
13	Acotylea	Pseudostylochidae	<i>Pseudostylochus</i>	<i>obscurus</i>	28 Sep 2012	34° 39' N	138° 59' E	Shimoda, Shizuoka (Tsumekizaki)
14	Acotylea	Pseudostylochidae	<i>Pseudostylochus</i>	<i>obscurus</i>	01 Nov 2013	34° 39' N	138° 59' E	Shimoda, Shizuoka (Tsumekizaki)
15	Acotylea	Pseudostylochidae	<i>Pseudostylochus</i>	<i>obscurus</i>	01 Nov 2013	34° 39' N	138° 59' E	Shimoda, Shizuoka (Tsumekizaki)
16	Acotylea	Pseudostylochidae	<i>Pseudostylochus</i>	<i>obscurus</i>	03 Apr 2014	34° 39' N	138° 59' E	Shimoda, Shizuoka (Tsumekizaki)
17	Acotylea	Pseudostylochidae	<i>Pseudostylochus</i>	<i>obscurus</i>	03 Apr 2014	34° 39' N	138° 59' E	Shimoda, Shizuoka (Tsumekizaki)
18	Acotylea	Pseudostylochidae	<i>Pseudostylochus</i>	<i>obscurus</i>	19 Jan 2015	34° 39' N	138° 59' E	Shimoda, Shizuoka (Tsumekizaki)
19	Acotylea	Pseudostylochidae	<i>Pseudostylochus</i>	<i>obscurus</i>	19 Jan 2015	34° 39' N	138° 59' E	Shimoda, Shizuoka (Tsumekizaki)

Sample number	Suborder	Family	Genus	Species	Sampling date	Sampling location		
						Lat.	Long.	Location
20	Acotylea	Pseudostylochidae	<i>Pseudostylochus</i>	<i>obscurus</i>	19 Jan 2015	34° 39' N	138° 59' E	Shimoda, Shizuoka (Tsumekizaki)
21	Acotylea	Pseudostylochidae	<i>Pseudostylochus</i>	<i>obscurus</i>	31 Oct 2013	35° 08' N	139° 09' E	Manazuru, Kanagawa
22	Acotylea	Pseudostylochidae	<i>Pseudostylochus</i>	<i>obscurus</i>	04 May 2011	35° 15' N	139° 34' E	Hayama, Kanagawa
23	Acotylea	Pseudostylochidae	<i>Pseudostylochus</i>	<i>elongatus</i>	05 Jul 2012	35° 15' N	139° 34' E	Hayama, Kanagawa
24	Acotylea	Notoplanidae	<i>Notoplana</i>	<i>delicata</i>	14 Jun 2014	34° 39' N	138° 57' E	Shimoda, Shizuoka (Ebisu Island)
25	Acotylea	Notoplanidae	<i>Notoplana</i>	<i>delicata</i>	03 Apr 2014	34° 39' N	138° 59' E	Shimoda, Shizuoka (Tsumekizaki)
26	Acotylea	Notoplanidae	<i>Notoplana</i>	<i>delicata</i>	03 Apr 2014	34° 39' N	138° 59' E	Shimoda, Shizuoka (Tsumekizaki)
27	Acotylea	Notoplanidae	<i>Notoplana</i>	<i>delicata</i>	04 May 2011	35° 15' N	139° 34' E	Hayama, Kanagawa
28	Acotylea	Notoplanidae	<i>Notocomplana</i>	<i>humilis</i>	26 Apr 2013	34° 39' N	138° 57' E	Shimoda, Shizuoka (Ebisu Island)
29	Acotylea	Notoplanidae	<i>Notocomplana</i>	<i>humilis</i>	14 Jun 2014	34° 39' N	138° 57' E	Shimoda, Shizuoka (Ebisu Island)
30	Acotylea	Notoplanidae	<i>Notocomplana</i>	<i>humilis</i>	14 Jun 2014	34° 39' N	138° 57' E	Shimoda, Shizuoka (Ebisu Island)
31	Acotylea	Notoplanidae	<i>Notocomplana</i>	<i>humilis</i>	01 Nov 2013	34° 39' N	138° 59' E	Shimoda, Shizuoka (Tsumekizaki)
32	Acotylea	Notoplanidae	<i>Notocomplana</i>	<i>humilis</i>	03 Apr 2014	34° 39' N	138° 59' E	Shimoda, Shizuoka (Tsumekizaki)
33	Acotylea	Notoplanidae	<i>Notocomplana</i>	<i>humilis</i>	03 Apr 2014	34° 39' N	138° 59' E	Shimoda, Shizuoka (Tsumekizaki)
34	Acotylea	Notoplanidae	<i>Notocomplana</i>	<i>humilis</i>	03 Apr 2014	34° 39' N	138° 59' E	Shimoda, Shizuoka (Tsumekizaki)
35	Acotylea	Notoplanidae	<i>Notocomplana</i>	<i>humilis</i>	14 Jun 2014	34° 39' N	138° 59' E	Shimoda, Shizuoka (Tsumekizaki)
36	Acotylea	Notoplanidae	<i>Notocomplana</i>	<i>humilis</i>	19 Jan 2015	34° 39' N	138° 59' E	Shimoda, Shizuoka (Tsumekizaki)
37	Acotylea	Notoplanidae	<i>Notocomplana</i>	<i>humilis</i>	19 Jan 2015	34° 39' N	138° 59' E	Shimoda, Shizuoka (Tsumekizaki)
38	Acotylea	Notoplanidae	<i>Notocomplana</i>	<i>humilis</i>	19 Jan 2015	34° 39' N	138° 59' E	Shimoda, Shizuoka (Tsumekizaki)
39	Acotylea	Notoplanidae	<i>Notocomplana</i>	<i>humilis</i>	19 Jan 2015	34° 39' N	138° 59' E	Shimoda, Shizuoka (Tsumekizaki)
40	Acotylea	Notoplanidae	<i>Notocomplana</i>	<i>humilis</i>	19 Jan 2015	34° 39' N	138° 59' E	Shimoda, Shizuoka (Tsumekizaki)
41	Acotylea	Notoplanidae	<i>Notocomplana</i>	<i>humilis</i>	04 May 2011	35° 15' N	139° 34' E	Hayama, Kanagawa
42	Acotylea	Notoplanidae	<i>Notocomplana</i>	<i>humilis</i>	04 May 2011	35° 15' N	139° 34' E	Hayama, Kanagawa
43	Acotylea	Notoplanidae	<i>Notocomplana</i>	<i>humilis</i>	04 May 2011	35° 15' N	139° 34' E	Hayama, Kanagawa
44	Acotylea	Notoplanidae	<i>Notocomplana</i>	<i>humilis</i>	04 May 2011	35° 15' N	139° 34' E	Hayama, Kanagawa
45	Acotylea	Notoplanidae	<i>Notocomplana</i>	<i>humilis</i>	04 May 2011	35° 15' N	139° 34' E	Hayama, Kanagawa
46	Acotylea	Notoplanidae	<i>Notocomplana</i>	<i>humilis</i>	05 Jul 2012	35° 15' N	139° 34' E	Hayama, Kanagawa
47	Acotylea	Notoplanidae	<i>Notocomplana</i>	<i>humilis</i>	05 Jul 2012	35° 15' N	139° 34' E	Hayama, Kanagawa
48	Acotylea	Notoplanidae	<i>Notocomplana</i>	<i>humilis</i>	05 Jul 2012	35° 15' N	139° 34' E	Hayama, Kanagawa
49	Acotylea	Notoplanidae	<i>Notocomplana</i>	<i>humilis</i>	05 Jul 2012	35° 15' N	139° 34' E	Hayama, Kanagawa
50	Acotylea	Notoplanidae	<i>Notocomplana</i>	<i>humilis</i>	05 Jul 2012	35° 15' N	139° 34' E	Hayama, Kanagawa
51	Acotylea	Notoplanidae	<i>Notocomplana</i>	<i>koreana</i>	26 Apr 2013	34° 39' N	138° 57' E	Shimoda, Shizuoka (Ebisu Island)
52	Acotylea	Notoplanidae	<i>Notocomplana</i>	<i>koreana</i>	26 Apr 2013	34° 39' N	138° 57' E	Shimoda, Shizuoka (Ebisu Island)
53	Acotylea	Notoplanidae	<i>Notocomplana</i>	<i>japonica</i>	01 Nov 2013	34° 39' N	138° 59' E	Shimoda, Shizuoka (Tsumekizaki)
54	Acotylea	Notoplanidae	<i>Notocomplana</i>	<i>japonica</i>	01 Nov 2013	34° 39' N	138° 59' E	Shimoda, Shizuoka (Tsumekizaki)

Sample number	Suborder	Family	Genus	Species	Sampling date	Sampling location		
						Lat.	Long.	Location
55	Acotylea	Notoplanidae	<i>Notocomplana</i>	sp.	03 Apr 2014	34° 39' N	138° 59' E	Shimoda, Shizuoka (Tsumekizaki)
56	Acotylea	Notoplanidae	<i>Notocomplana</i>	sp.	14 Jun 2014	34° 39' N	138° 59' E	Shimoda, Shizuoka (Tsumekizaki)
57	Acotylea	Notoplanidae	<i>Notocomplana</i>	sp.	19 Jan 2015	34° 39' N	138° 59' E	Shimoda, Shizuoka (Tsumekizaki)
58	Acotylea	Notoplanidae	<i>Notocomplana</i>	sp.	19 Jan 2015	34° 39' N	138° 59' E	Shimoda, Shizuoka (Tsumekizaki)
59	Cotylea	Prosthiostomidae	<i>Prosthiostomum</i>	<i>grande</i>	14 Jun 2014	34° 39' N	138° 57' E	Shimoda, Shizuoka (Ebisu Island)
60	Cotylea	Prosthiostomidae	<i>Prosthiostomum</i>	<i>grande</i>	14 Jun 2014	34° 39' N	138° 57' E	Shimoda, Shizuoka (Ebisu Island)
61	Cotylea	Prosthiostomidae	<i>Prosthiostomum</i>	<i>grande</i>	04 May 2011	35° 15' N	139° 34' E	Hayama, Kanagawa
62	Cotylea	Prosthiostomidae	<i>Prosthiostomum</i>	<i>grande</i>	05 Jul 2012	35° 15' N	139° 34' E	Hayama, Kanagawa
63	Cotylea	Prosthiostomidae	<i>Prosthiostomum</i>	<i>grande</i>	04 Aug 2012	35° 15' N	139° 34' E	Hayama, Kanagawa
64	Cotylea	Prosthiostomidae	<i>Prosthiostomum</i>	<i>vulgaris</i>	27 Apr 2013	34° 39' N	138° 59' E	Shimoda, Shizuoka (Tsumekizaki)
65	Cotylea	Prosthiostomidae	<i>Prosthiostomum</i>	<i>vulgaris</i>	14 Jun 2014	34° 39' N	138° 59' E	Shimoda, Shizuoka (Tsumekizaki)
66	Cotylea	Euryleptidae	<i>Cycloporus</i>	<i>japonicus</i>	14 Jun 2014	34° 39' N	138° 59' E	Shimoda, Shizuoka (Tsumekizaki)
67	Cotylea	Pseudocerotidae	<i>Thysanozoon</i>	<i>brocchii</i>	14 Jun 2014	34° 39' N	138° 57' E	Shimoda, Shizuoka (Ebisu Island)
68	Cotylea	Pseudocerotidae	<i>Thysanozoon</i>	<i>brocchii</i>	03 Apr 2014	34° 39' N	138° 59' E	Shimoda, Shizuoka (Tsumekizaki)
69	Cotylea	Pseudocerotidae	<i>Thysanozoon</i>	<i>brocchii</i>	04 Aug 2012	35° 15' N	139° 34' E	Hayama, Kanagawa
70	Cotylea	Pseudocerotidae	<i>Thysanozoon</i>	<i>brocchii</i>	07 Sep 2013	35° 15' N	139° 34' E	Hayama, Kanagawa
71	Cotylea	Pseudocerotidae	<i>Thysanozoon</i>	<i>japonicum</i>	03 Apr 2014	34° 39' N	138° 59' E	Shimoda, Shizuoka (Tsumekizaki)
72	Cotylea	Pseudocerotidae	<i>Pseudoceros</i>	<i>velutinus</i>	25 May 2013	35° 08' N	139° 09' E	Manazuru, Kanagawa
73	Cotylea	Pseudocerotidae	<i>Pseudoceros</i>	<i>velutinus</i>	25 May 2013	35° 08' N	139° 09' E	Manazuru, Kanagawa
74	Cotylea	Pseudocerotidae	<i>Pseudoceros</i>	<i>nipponicus</i>	25 May 2013	35° 08' N	139° 09' E	Manazuru, Kanagawa
75	Cotylea	Pseudocerotidae	<i>Pseudoceros</i>	<i>nipponicus</i>	25 May 2013	35° 08' N	139° 09' E	Manazuru, Kanagawa
76	Cotylea	Pseudocerotidae	<i>Pseudobiceros</i>	<i>nigromarginatus</i>	25 May 2013	35° 08' N	139° 09' E	Manazuru, Kanagawa
77	Cotylea	Pseudocerotidae	<i>Pseudobiceros</i>	<i>nigromarginatus</i>	14 Jun 2014	34° 39' N	138° 57' E	Shimoda, Shizuoka (Ebisu Island)
78	Cotylea	Pseudocerotidae	<i>Pseudobiceros</i>	<i>nigromarginatus</i>	27 Apr 2013	34° 39' N	138° 59' E	Shimoda, Shizuoka (Tsumekizaki)
79	Cotylea	Pseudocerotidae	<i>Pseudoceros</i>	<i>atropurpureus</i>	27 Apr 2013	34° 39' N	138° 59' E	Shimoda, Shizuoka (Tsumekizaki)
80	Cotylea	Pseudocerotidae	<i>Pseudoceros</i>	<i>atropurpureus</i>	14 Jun 2014	34° 39' N	138° 59' E	Shimoda, Shizuoka (Tsumekizaki)
81	Cotylea	Pseudocerotidae	<i>Pseudoceros</i>	<i>atropurpureus</i>	14 Jun 2014	34° 39' N	138° 59' E	Shimoda, Shizuoka (Tsumekizaki)
82	Cotylea	Pseudocerotidae	<i>Pseudoceros</i>	<i>atropurpureus</i>	07 Sep 2013	35° 15' N	139° 34' E	Hayama, Kanagawa
83	Cotylea	Pseudocerotidae	<i>Pseudobiceros</i>	<i>flavomarginatus</i>	07 Sep 2013	35° 15' N	139° 34' E	Hayama, Kanagawa
84	Cotylea	Pseudocerotidae	<i>Pseudobiceros</i>	<i>hancockanus</i>	14 Jun 2014	34° 39' N	138° 59' E	Shimoda, Shizuoka (Tsumekizaki)

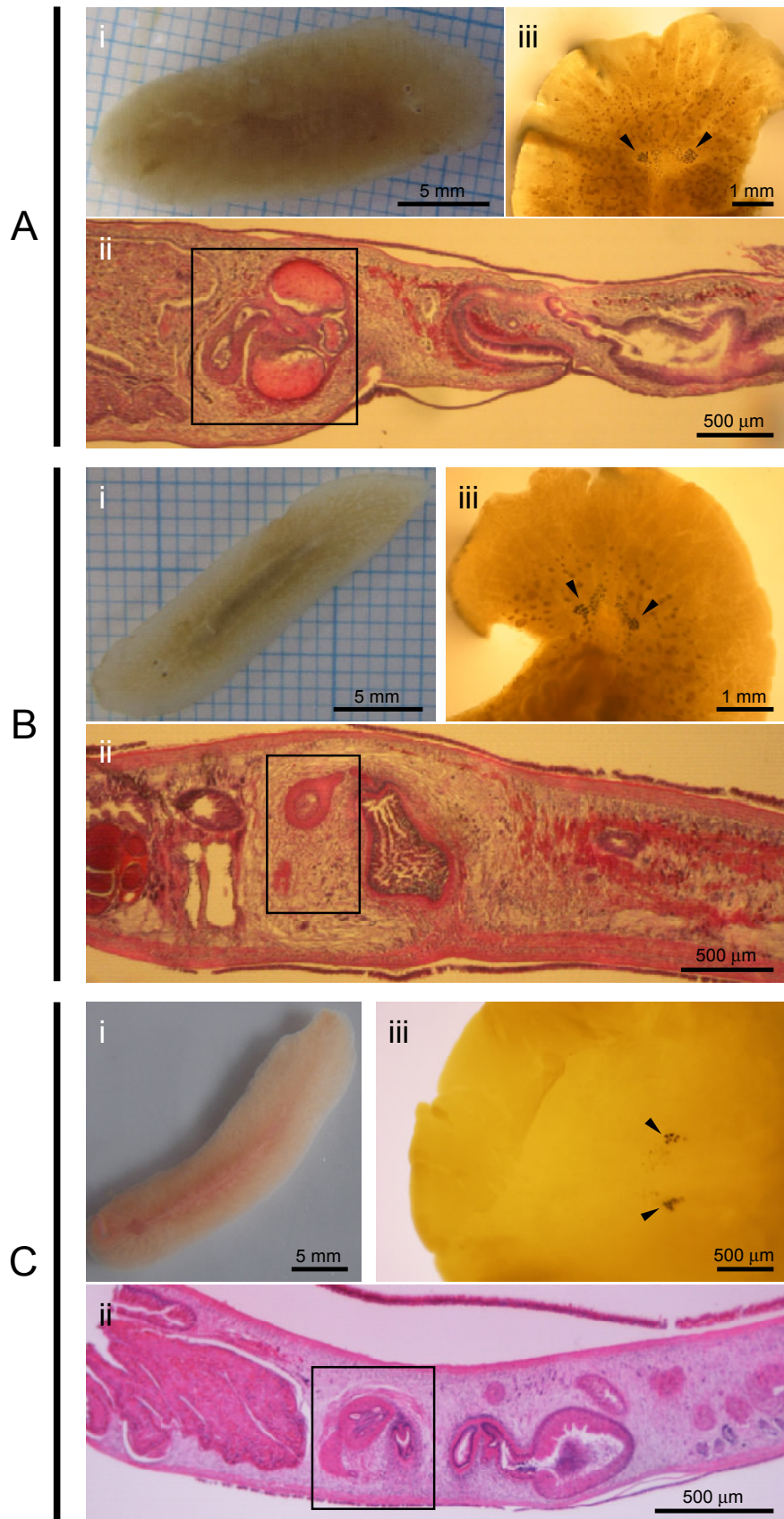


Fig. S1. Anatomy and morphology of polyclad flatworms in the genus *Notocomplana*. A, *Notocomplana humilis*; B, *Notocomplana koreana*; C, *Notocomplana japonica*. i, dorsal view of the living specimen; ii, sagittal section of copulatory organs (black square); iii, eyespots (arrowheads)