

Global warming-induced changes in climate zones based on CMIP5 projections

Michal Belda*, Eva Holtanová, Jaroslava Kalvová, Tomáš Halenka

*Corresponding author: michal.belda@mff.cuni.cz)

Climate Research 71: 17–31 (2016)

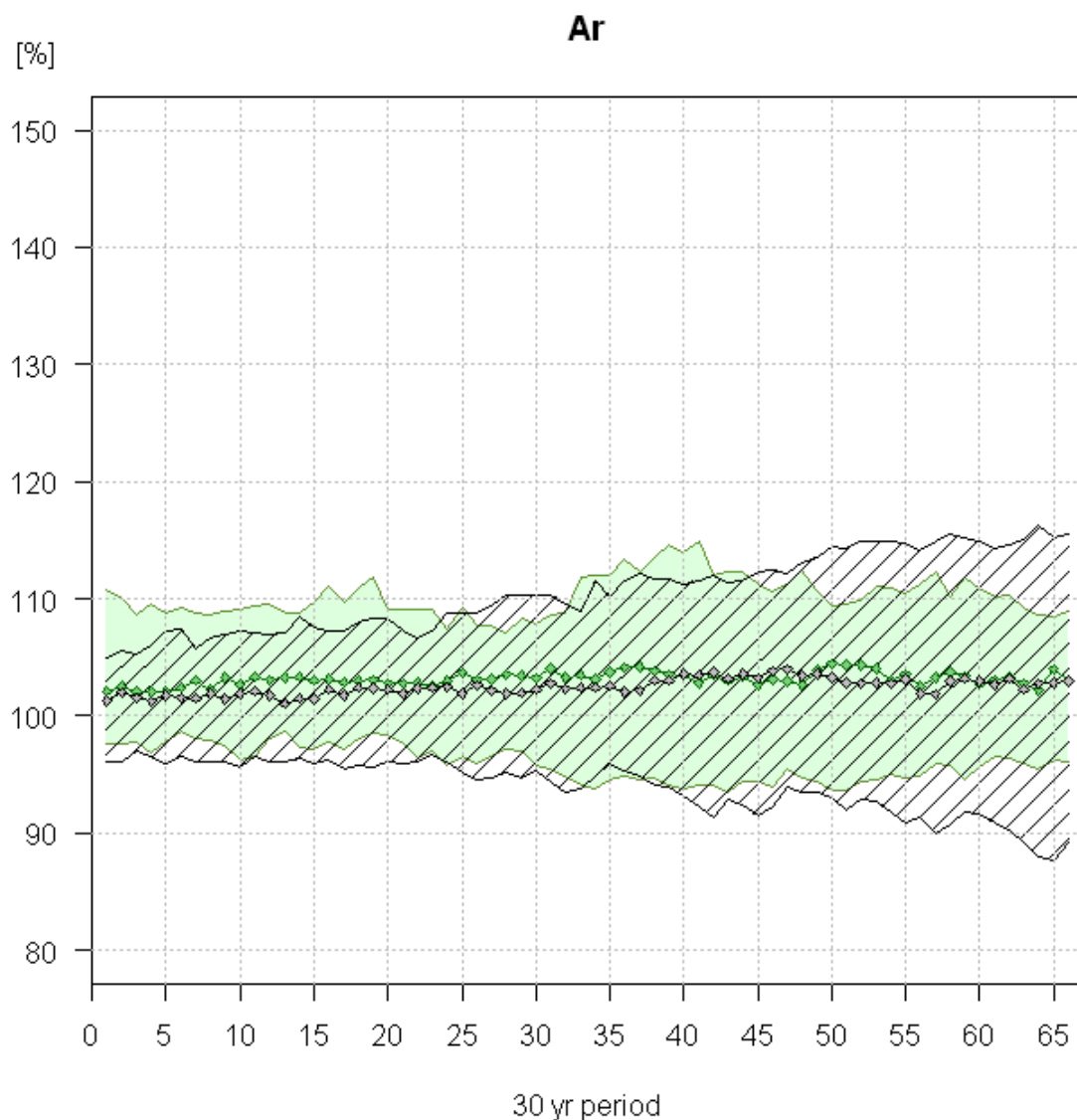


Figure S 1: Temporal evolution of continental area belonging to climate type Ar for moving 30 yr periods throughout the 21st century relative to 1961-1990 (100% means no change); x-axis: 30 yr periods (period 1 is 2006-2035, period 66 is 2071-2100); squares: multi-model medians calculated from the ensemble of 30 selected CMIP5 GCMs (green for RCP4.5, black for RCP8.5); green area (diagonal hatching): values between 10th and 90th percentiles of the multi-model ensemble for RCP4.5 (RCP8.5).

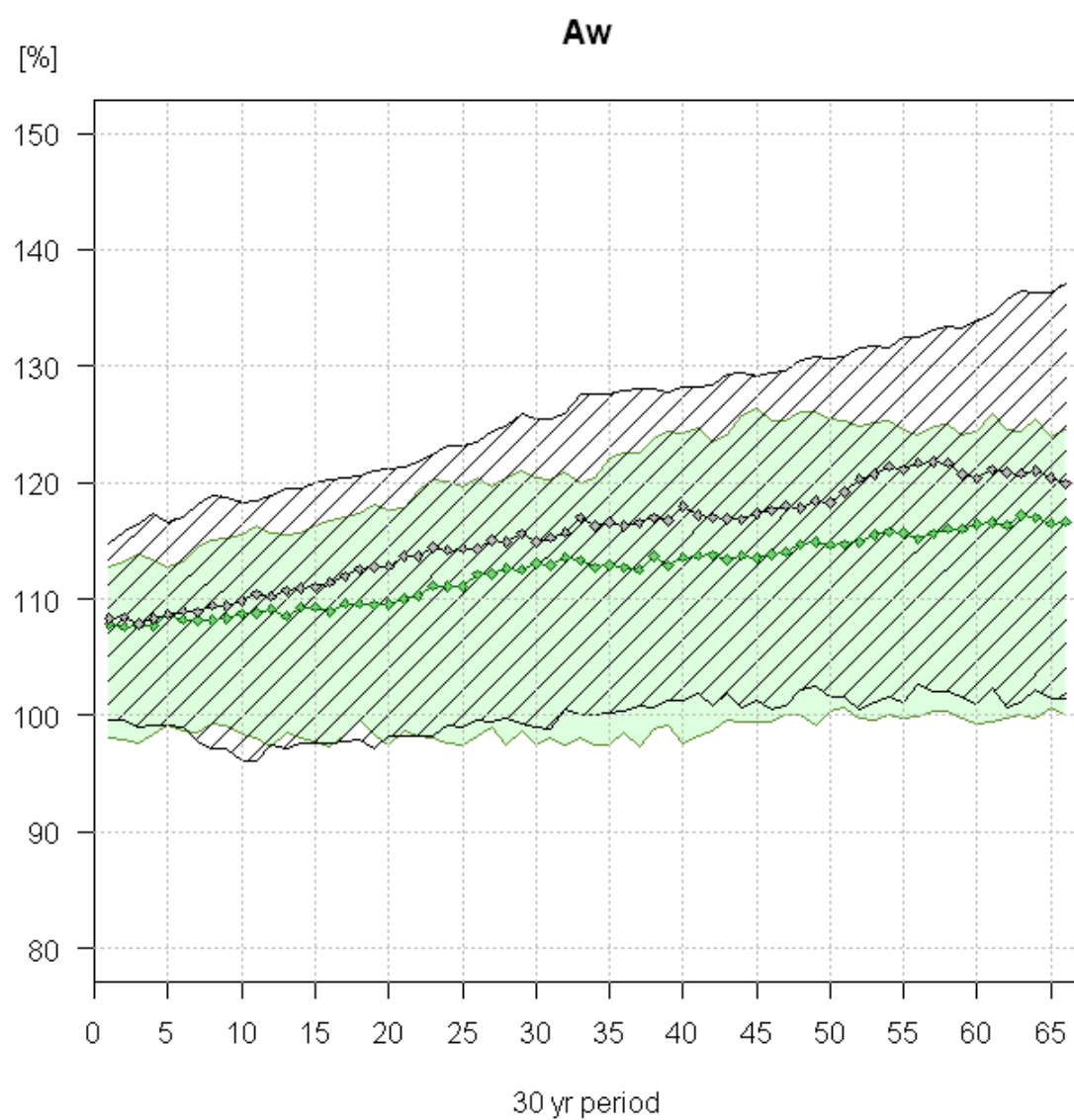


Figure S 2: As Figure S 1 for type Aw

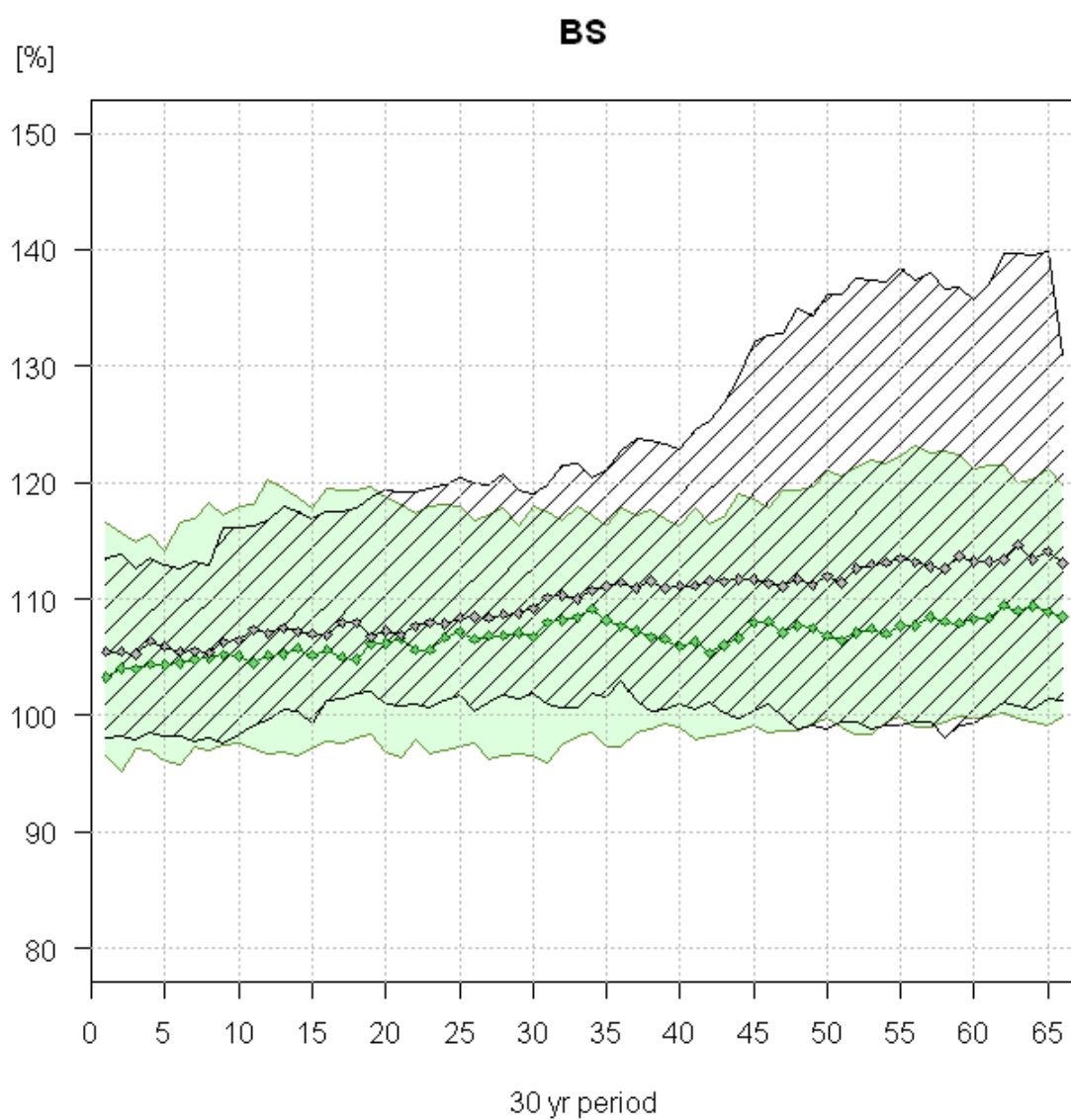


Figure S 3: As Figure S 1 for type BS

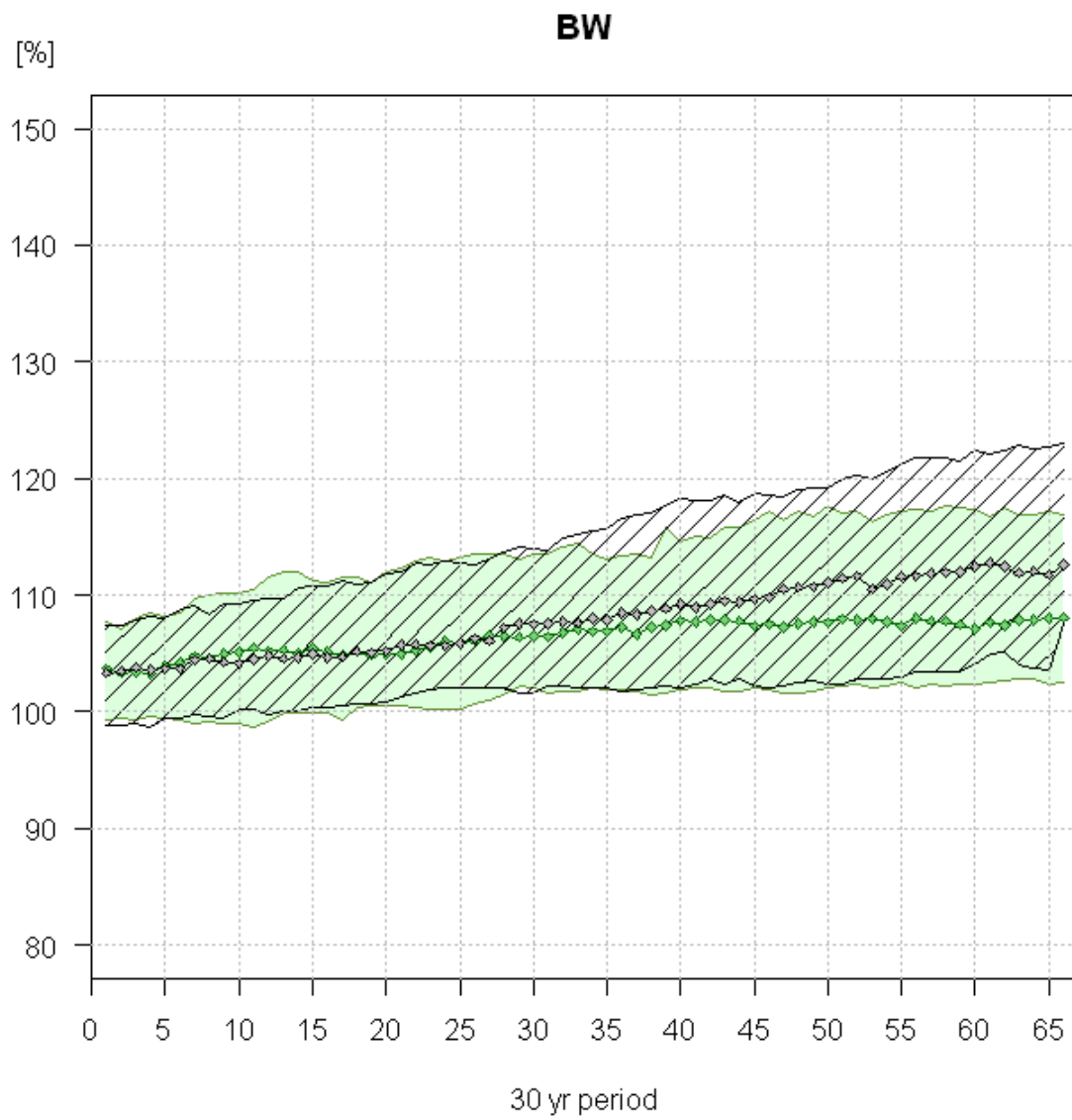


Figure S 4: As Figure S 1 for type BW

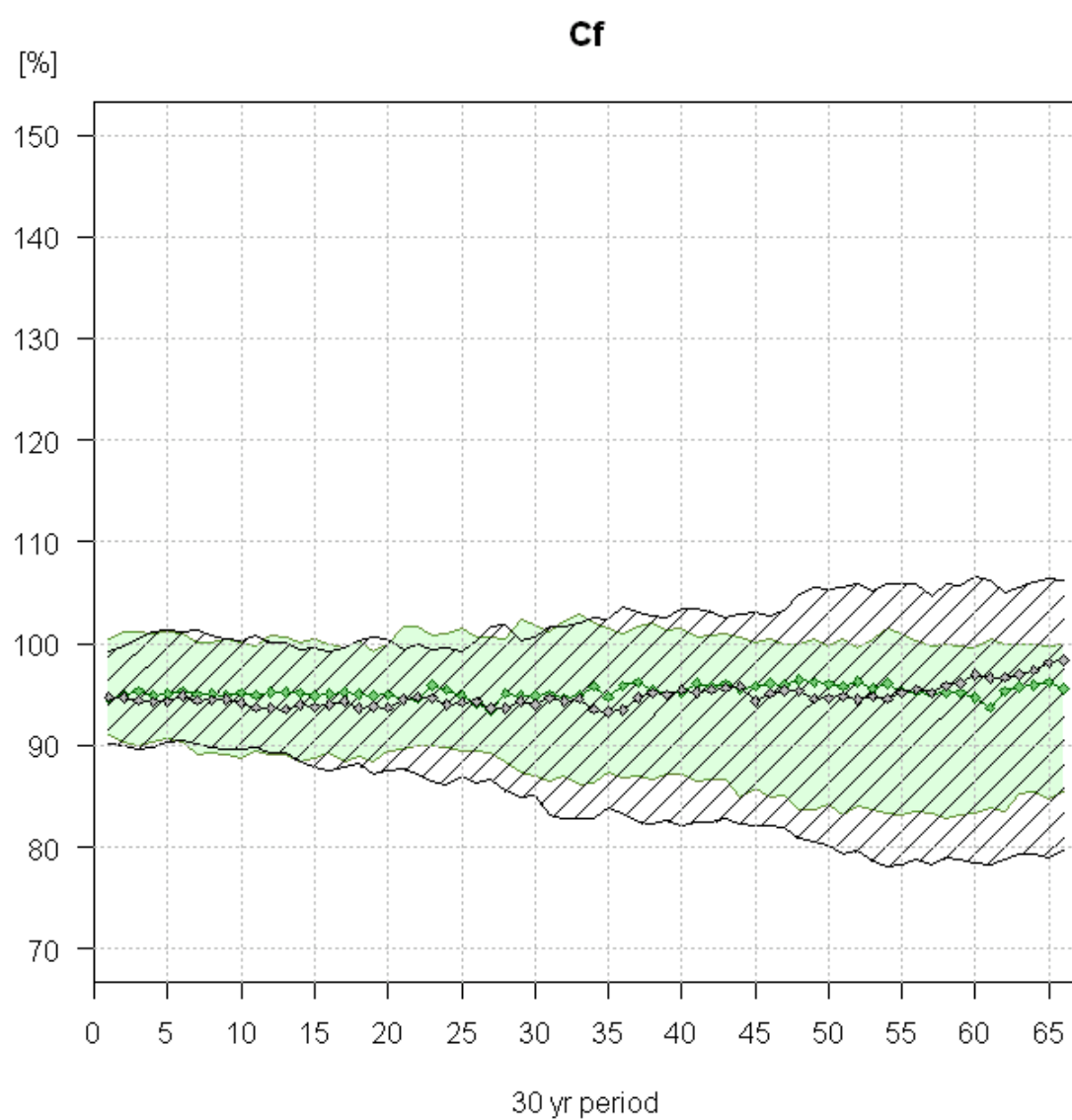


Figure S 5: As Figure S 1 for type Cf

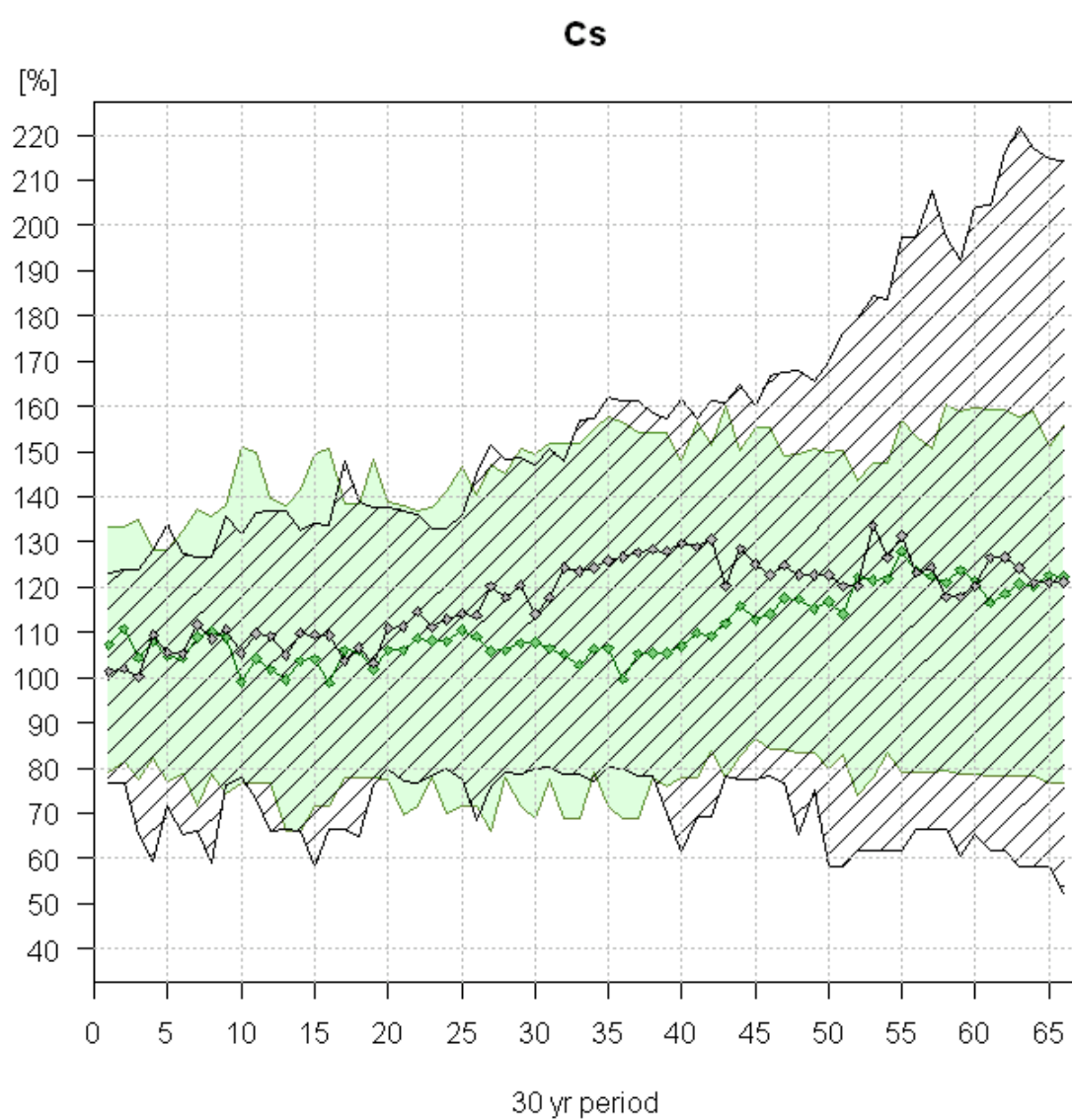


Figure S 6: As Figure S 1 for type Cs

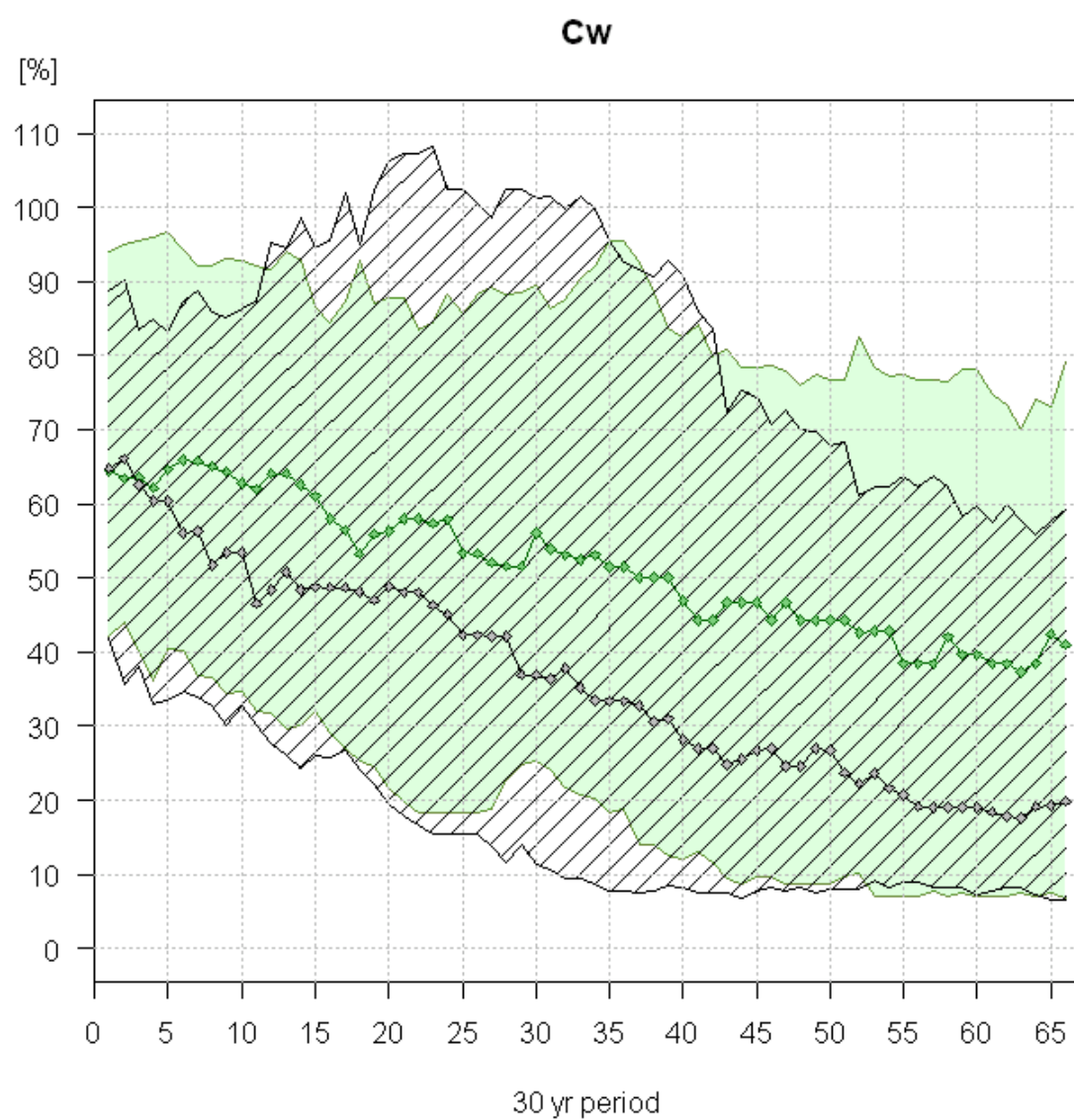


Figure S 7: As Figure S 1 for type Cw

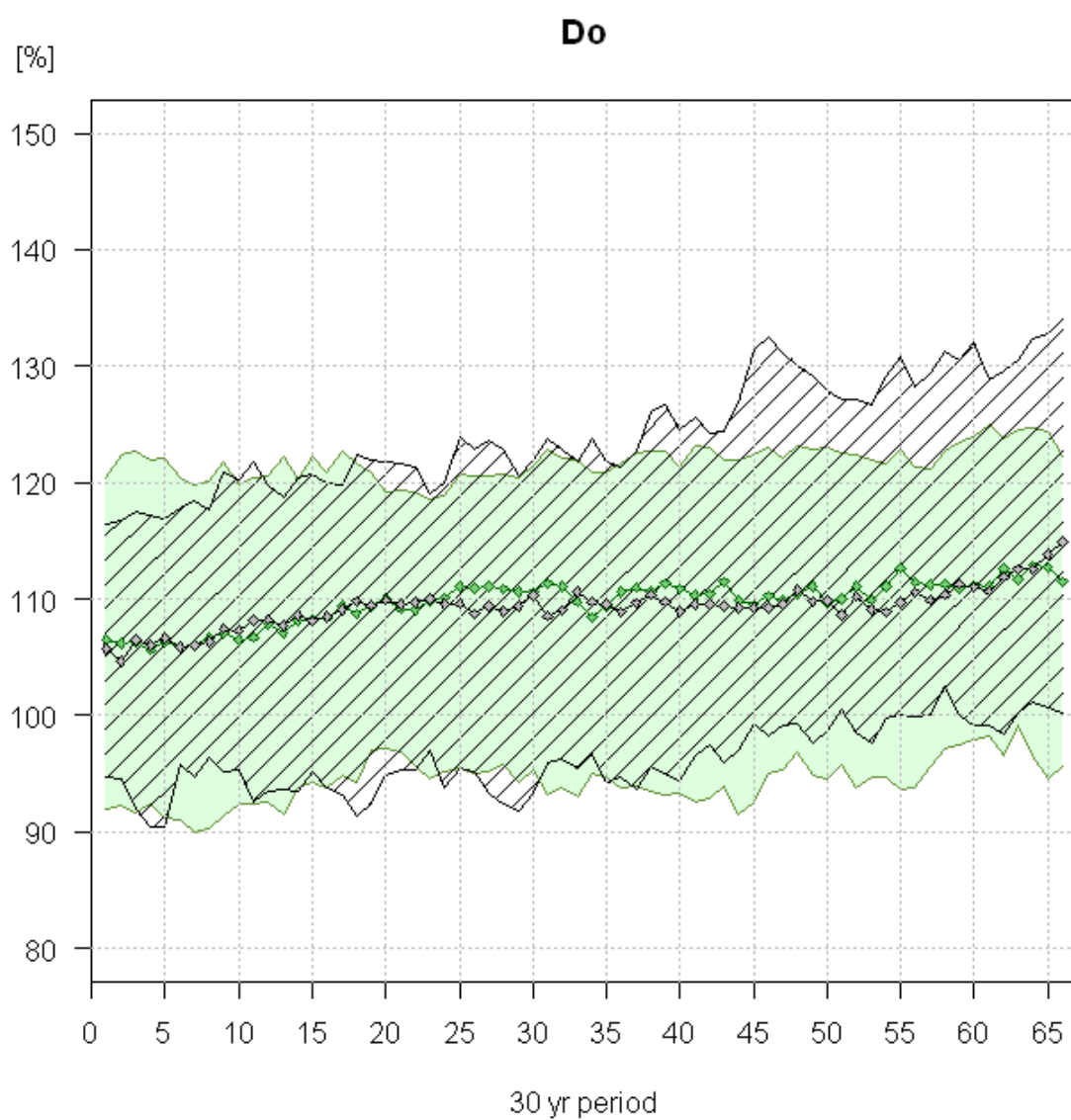


Figure S 8: As Figure S 1 for type Do

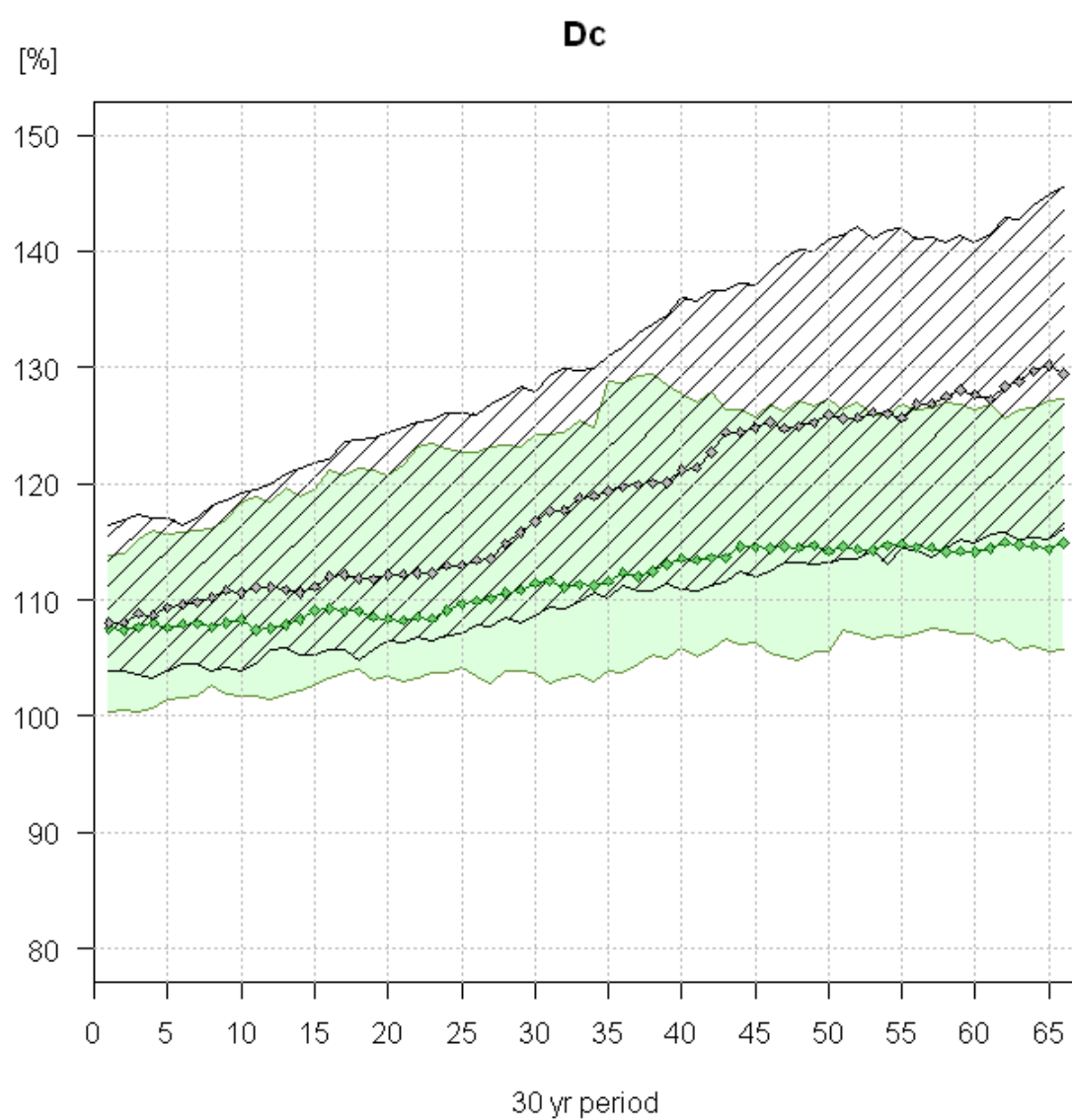


Figure S 9: As Figure S 1 for type Dc

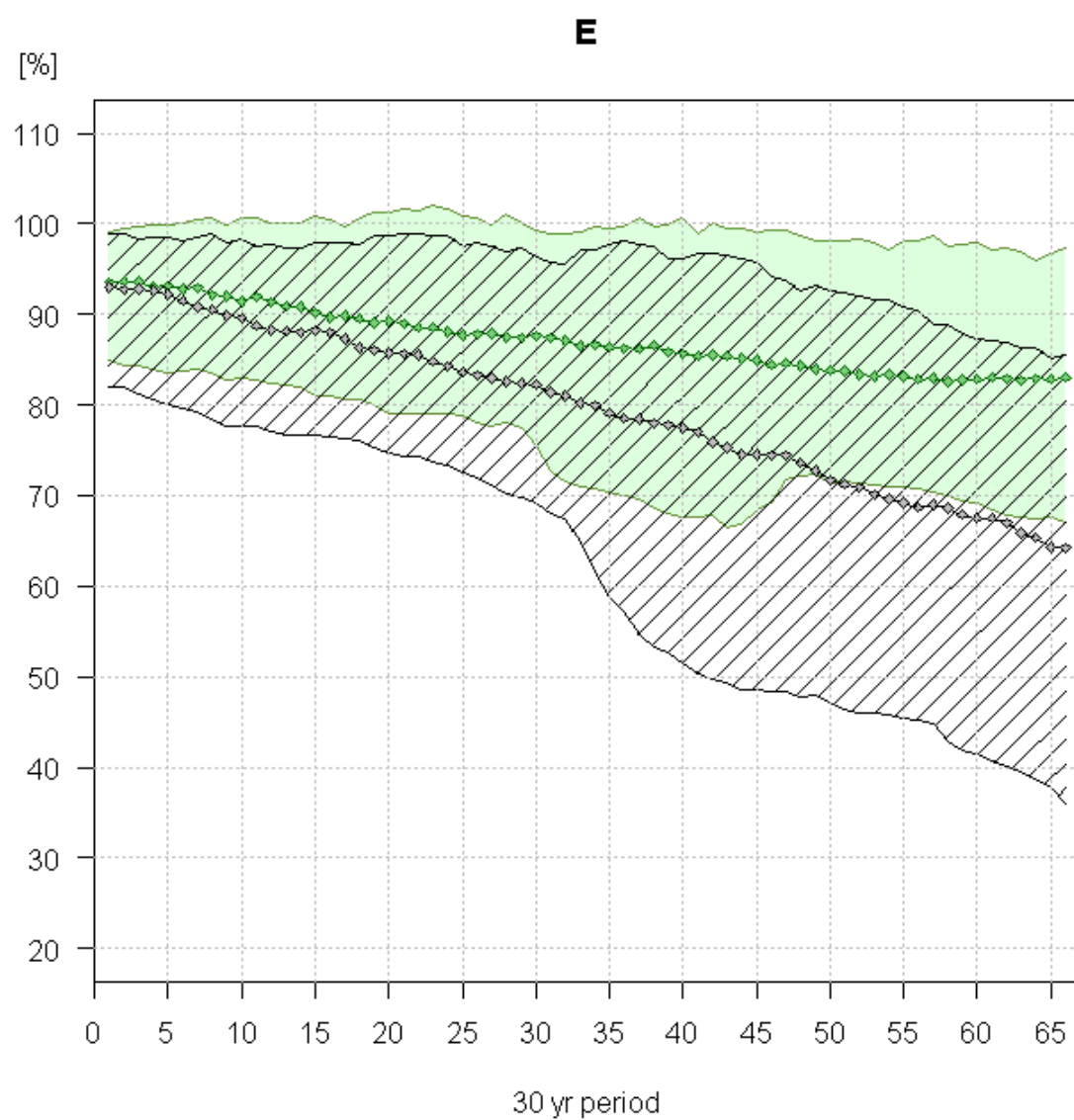


Figure S 10: As Figure S 1 for type E

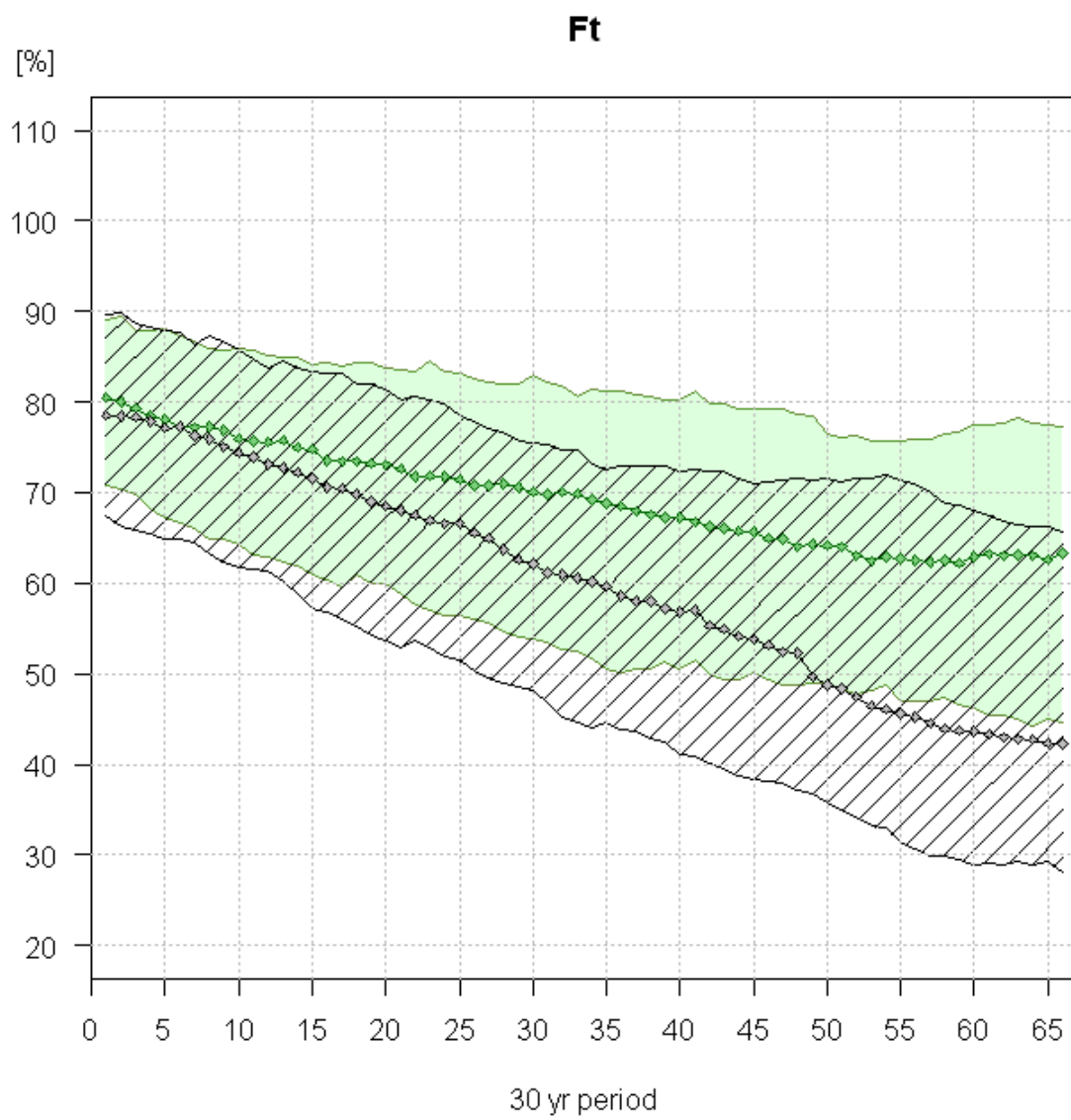


Figure S 11: As Figure S 1 for type Ft

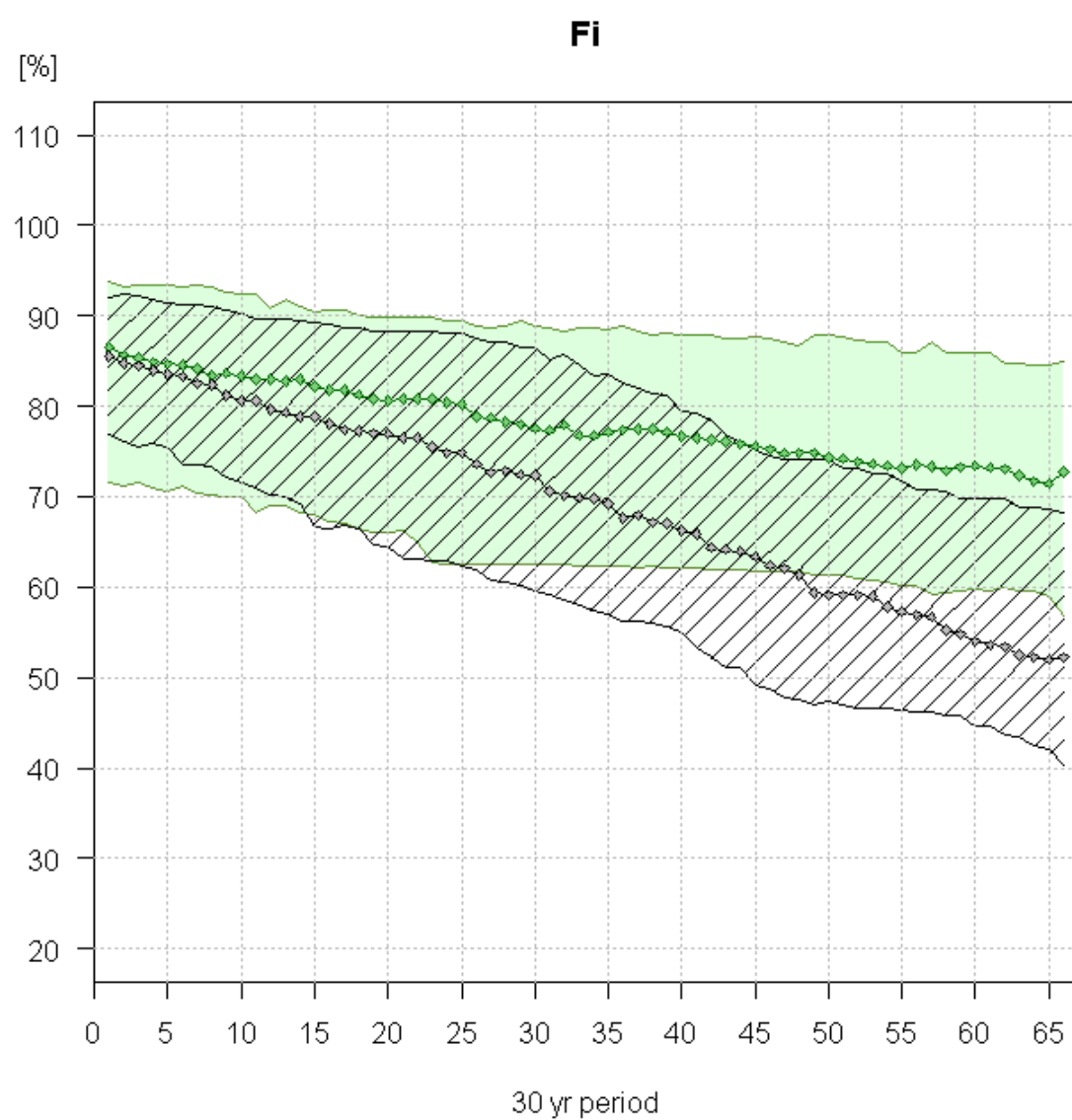


Figure S 12: As Figure S 1 for type Fi

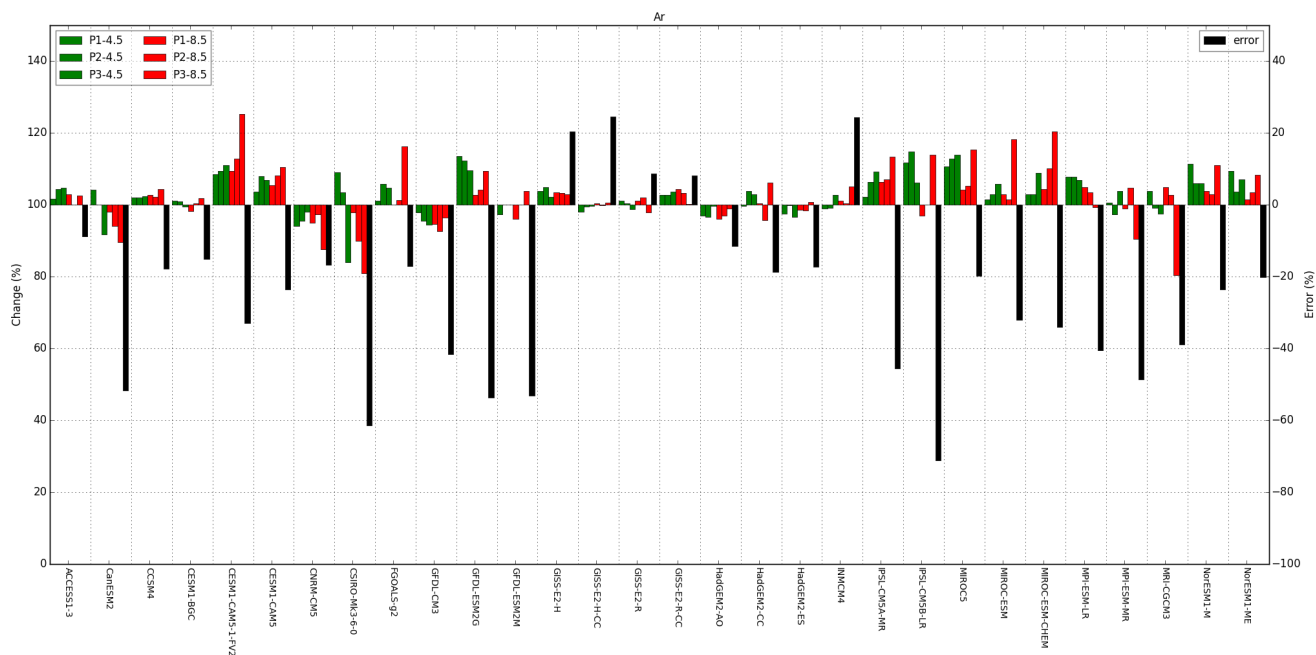


Figure S 13: Changes of relative continental areas of KTC climate type Ar projected for the periods 2006–2035 (P1), 2021–2050 (P2), 2071–2100 (P3) relative to the reference period 1961–1990 (100% means no change) based on the suite of selected 30 CMIP5 GCMs for RCP4.5 (green) and RCP8.5 (red); error: model error in the reference period expressed as the difference of simulated and observed (based on CRU TS3.22) relative area in percentage of the observed value.

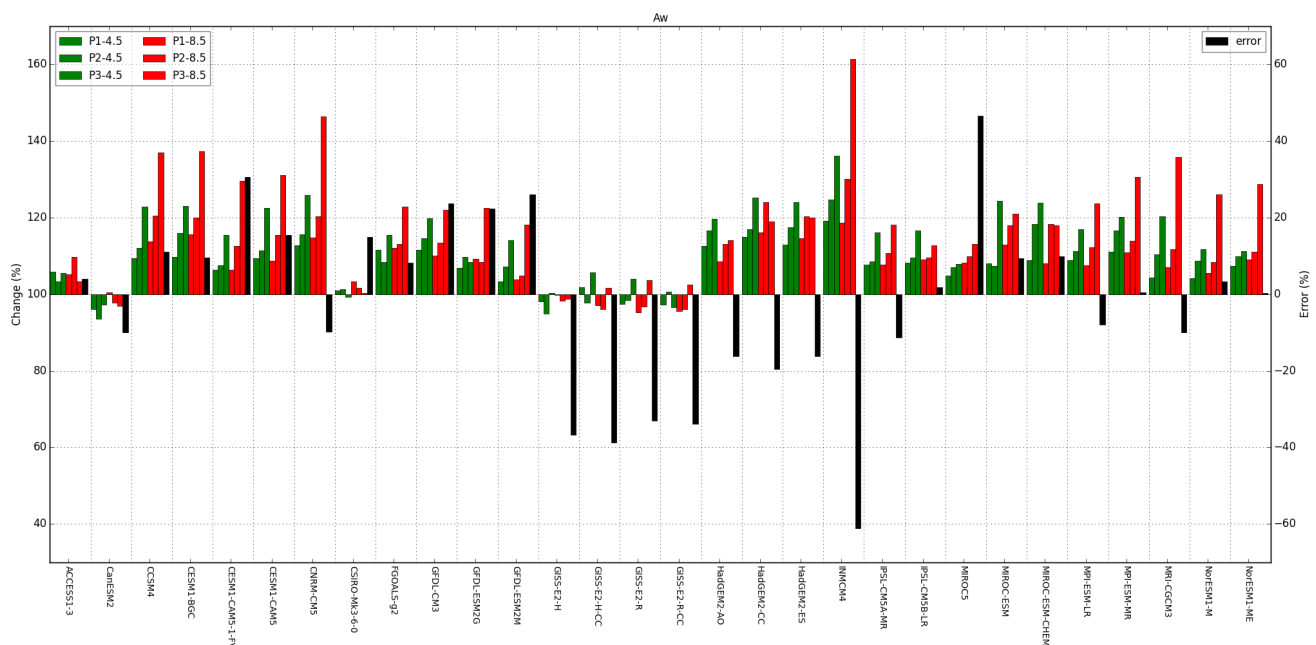


Figure S 14: As Figure S 13 for type Aw.

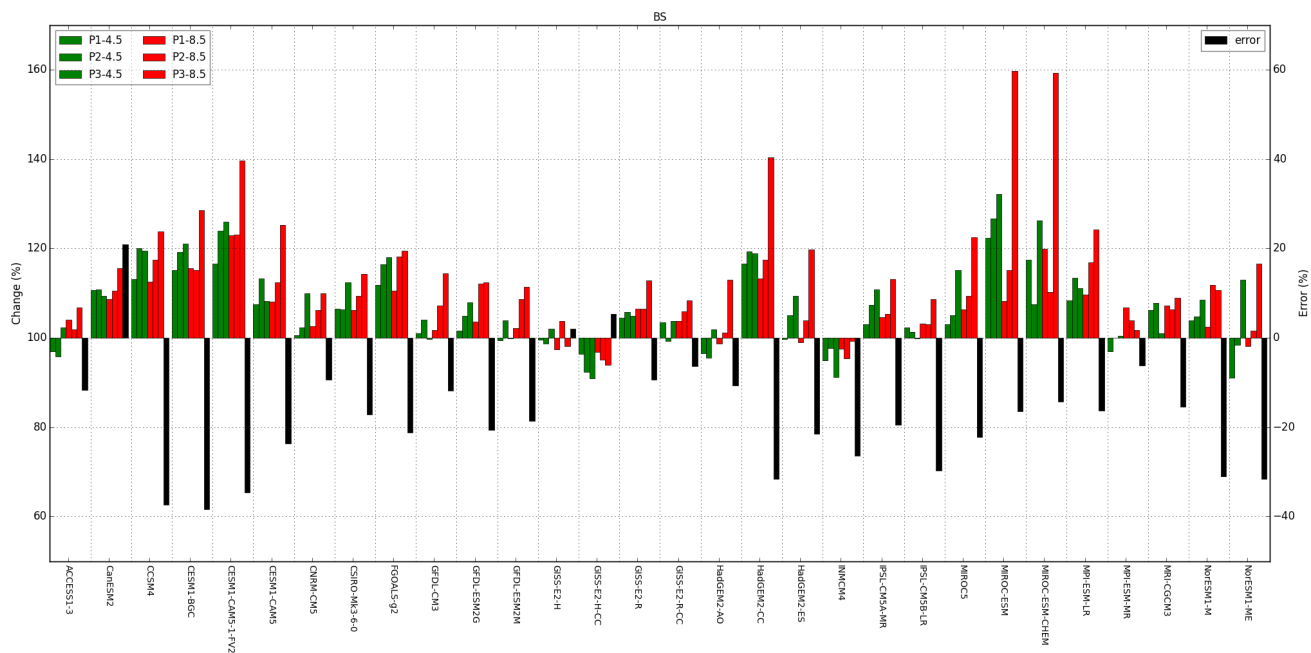


Figure S 15: As Figure S 13 for type BS

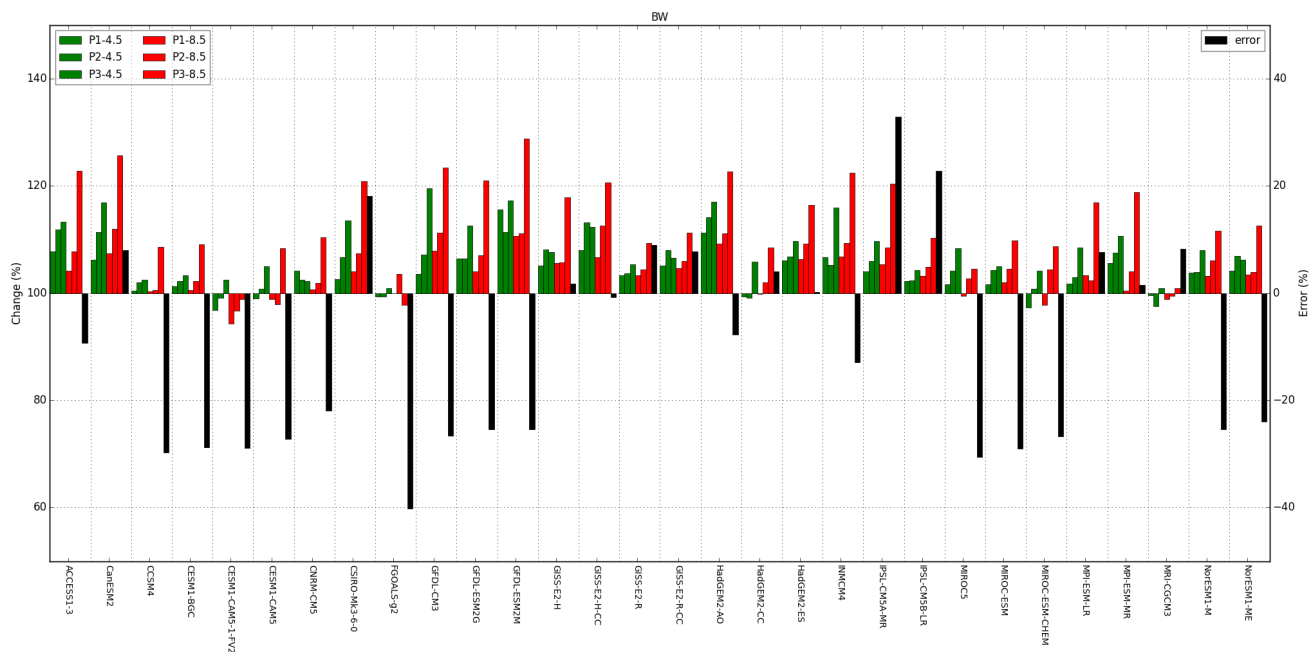


Figure S 16: As Figure S 13 for type BW

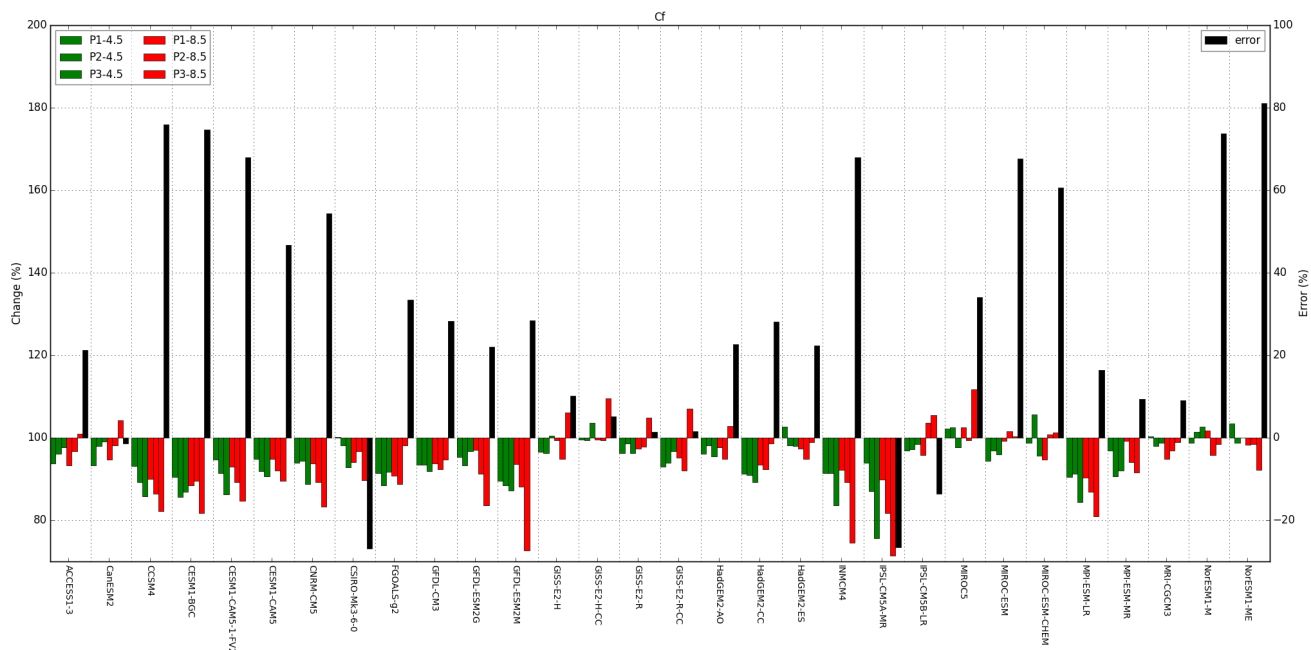


Figure S 17: As Figure S 13 for type Cf

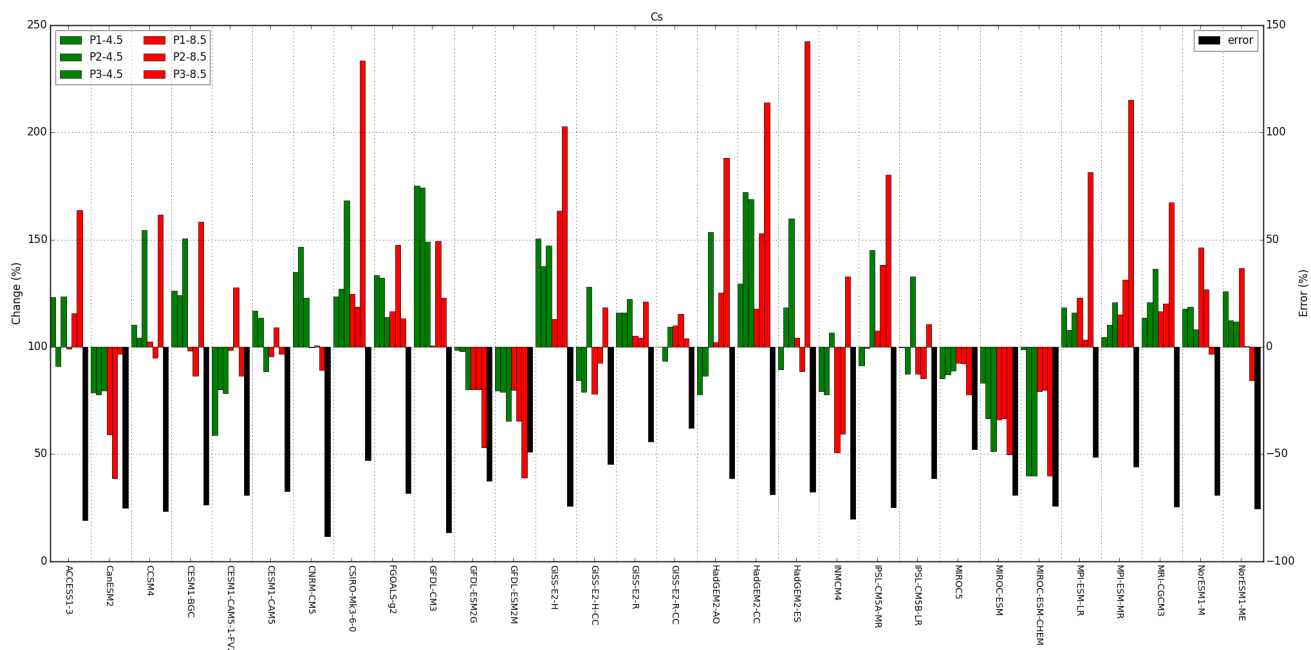


Figure S 18: As Figure S 13 for type Cs

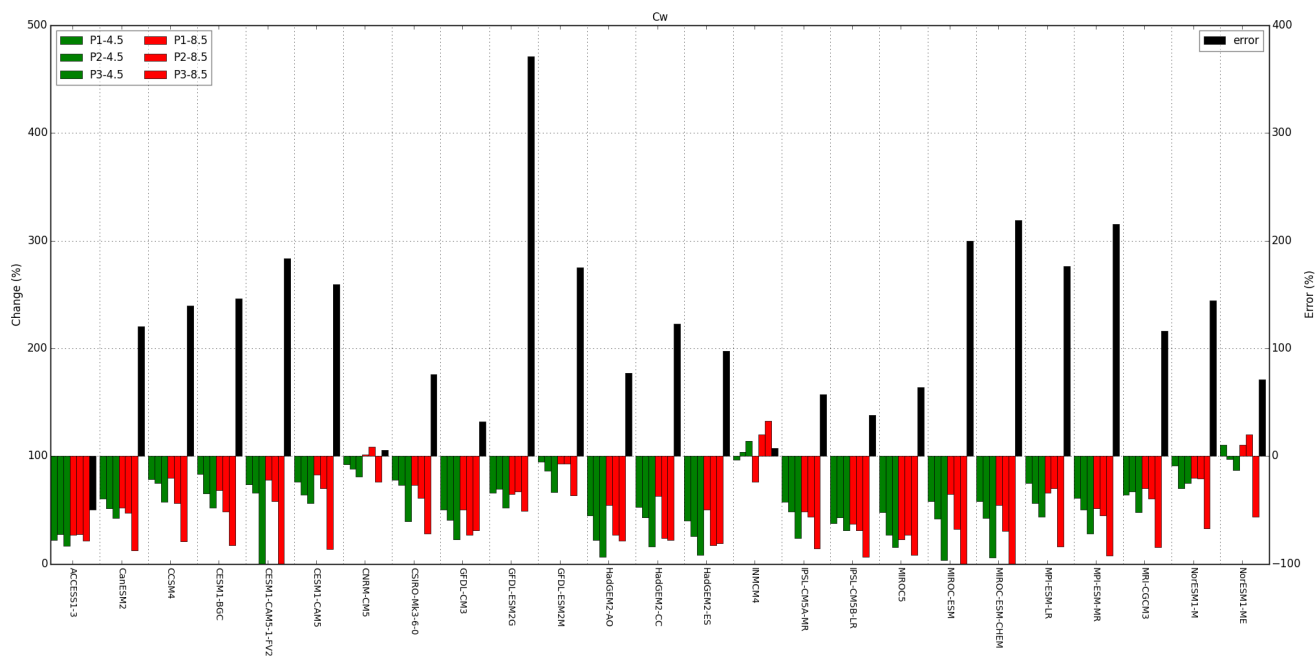


Figure S 19: As Figure S 13 for type CW

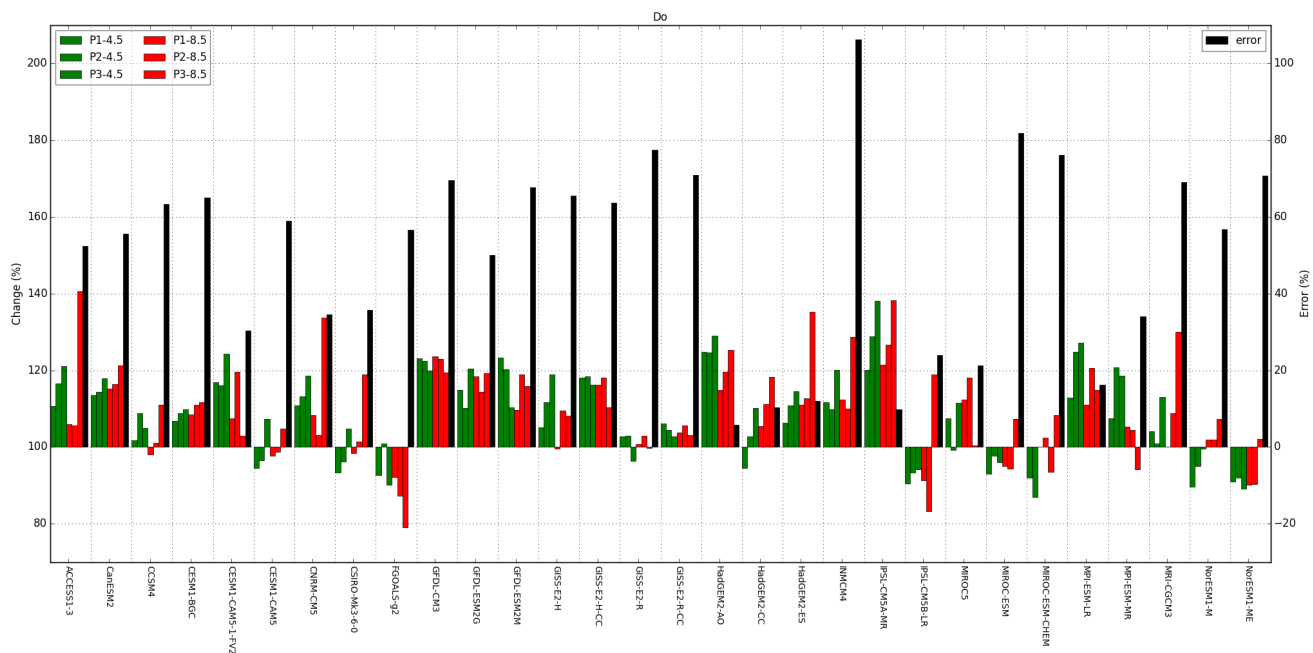


Figure S 20: As Figure S 13 for type Do

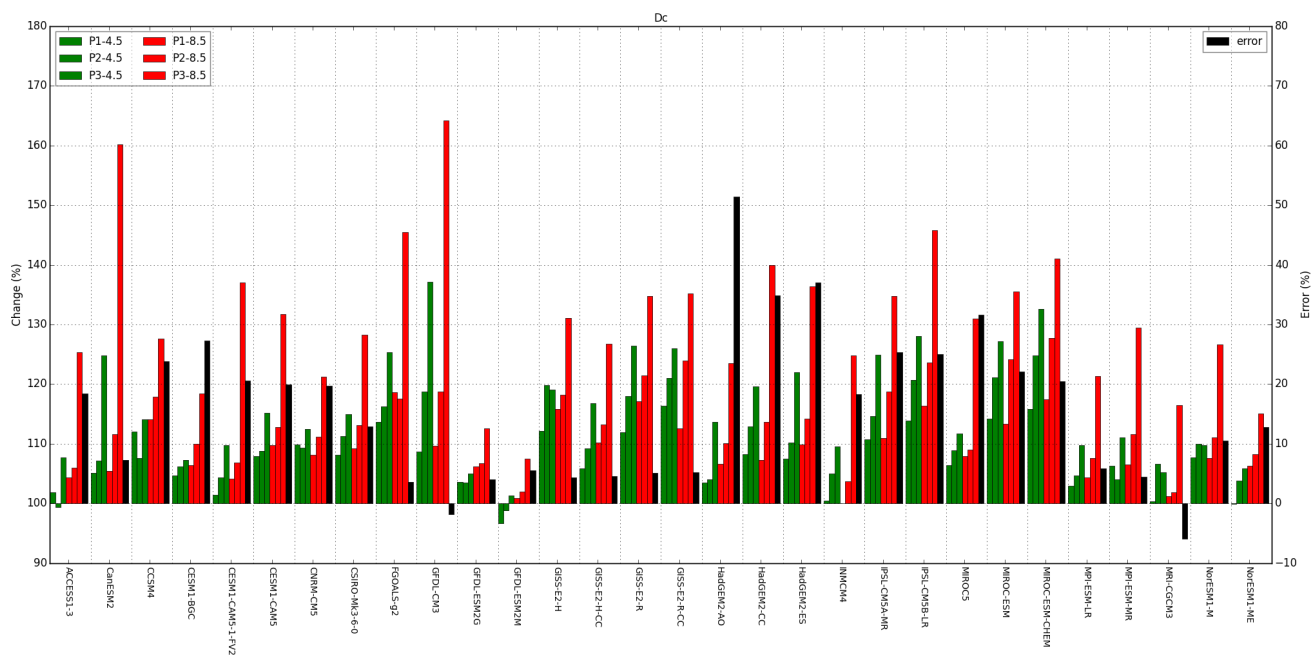


Figure S 21: As Figure S 13 for type Dc

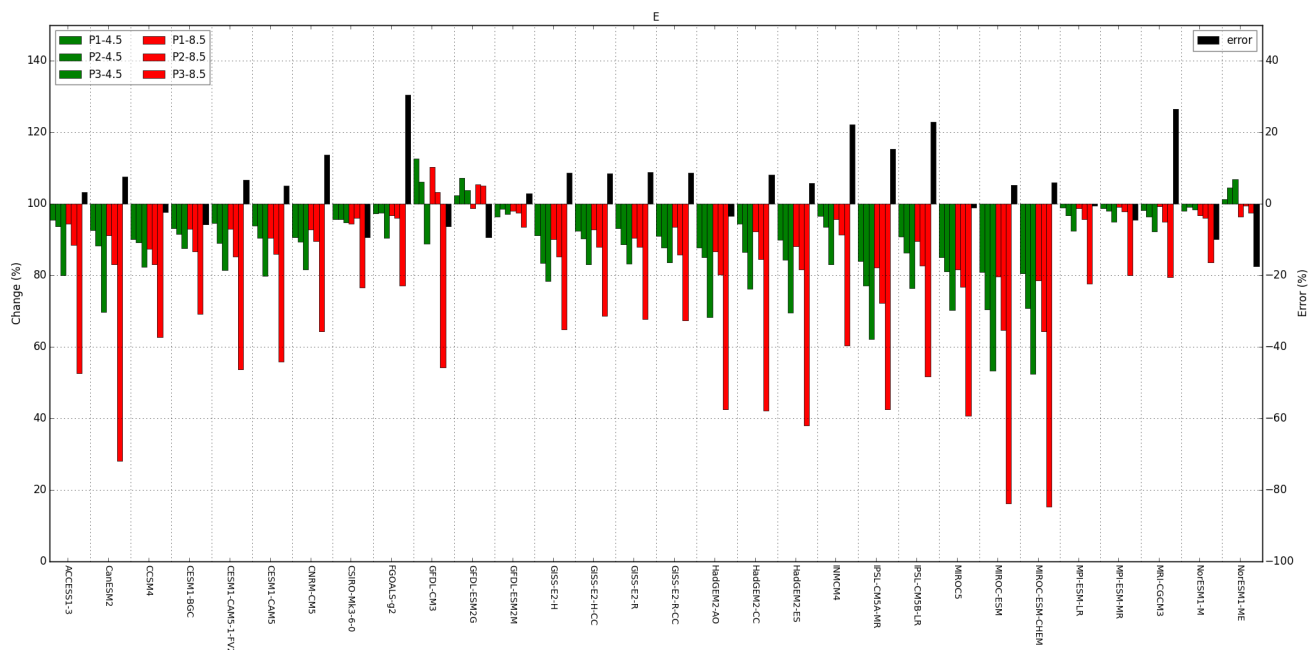


Figure S 22: As Figure S 13 for type E

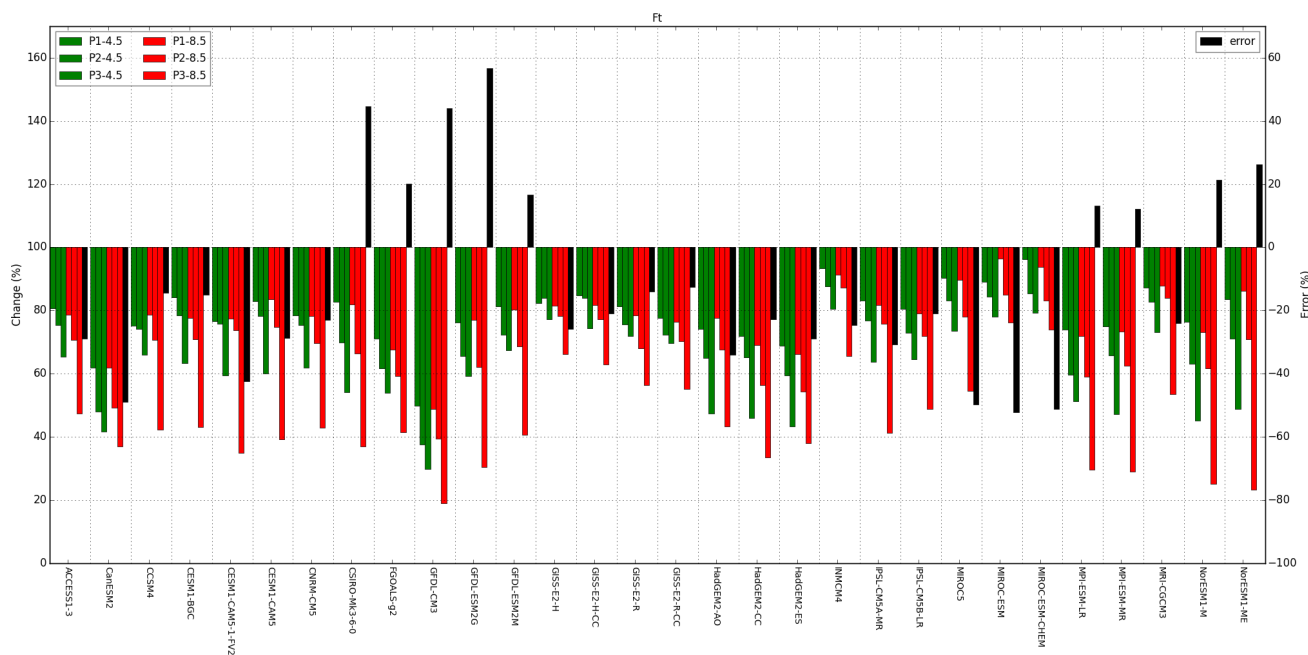


Figure S 23: As Figure S 13 for type Ft

