

Figure S1. Reaction of anti-tubulin antibodies against tissues of *T. gratilla*; positive reaction is brown staining. A) Test stereom with granular cells staining brown (arrow); bar= 20 μ m. B) Urchin testes; note tails of spermatozoa staining brown (arrowhead) contrasting with nuclei (arrow); bar= 20 μ m. C) Western blot of HELA cell positive control homogenates (Lane 1) and urchin test homogenate (Lane 2) reacted with polyclonal rabbit-anti-tubulin serum; arrow points to band at ca. 55 kDa.

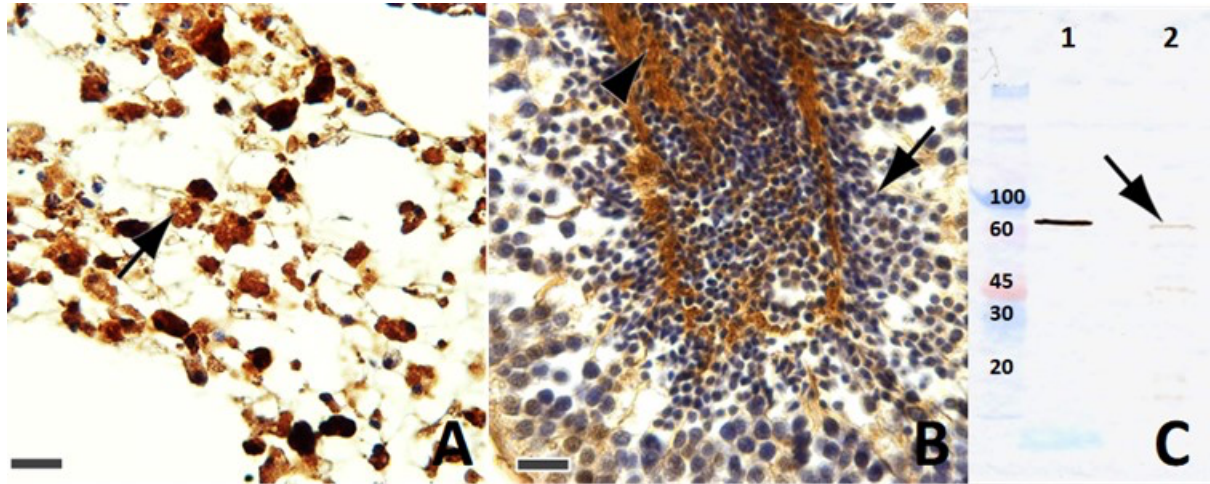


Table S1. Statistics (coefficient, standard error [SE], *t* value, *p* value, odds ratios [OR], and lower and upper bounds of 95% confidence intervals [CI]) for ordinal regression of test width, percent weight coelomic fluid, gut fill score, and test inflammation severity score with gross lesion score as dependent variable. Parameters with asterisk were significantly influenced by gross lesion score.

Parameter	Coefficient	SE	<i>t</i>	<i>p</i> value	OR	CI 2.5	CI 97.5
Gut fill score*	-1.098	0.359	-3.058	0.002	0.334	-1.801	-0.394
Max score test inflammation	-0.316	0.227	-1.393	0.164	0.729	-0.76	0.129
% coelomic fluid*	0.054	0.021	2.535	0.011	1.056	0.012	0.096
Width	-0.223	0.204	-1.093	0.274	0.8	-0.624	0.177