



Figure S1: Kidney with several partially mineralized parasitic granulomas (consistent with *Crassicauda giliakiana*). Scale bar = 5 cm



Figure S2: Right testicle adhered to lymph node and parasitic granuloma. Scale bar = 3 cm



Figure S3: Cut section of lung with parasitic nodule containing robust nematodes (likely *Crassicauda giliakiana*). Scale bar = 2 cm

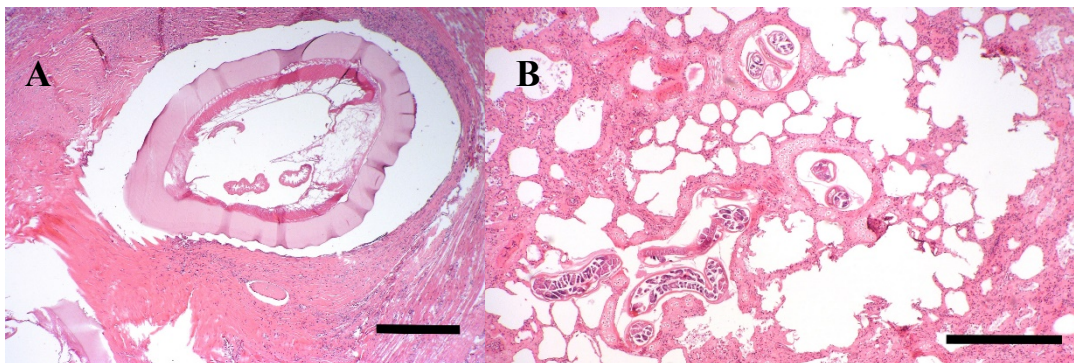


Figure S4: A) Lung section stained with H&E demonstrating the robust 1.46mm diameter nematode filling the arterial lumen consistent with *C. giliakiana*. B) Lung section with H&E containing cross sections of 90µm diameter nematode parasites in bronchioles and alveoli (probable *Stenurus arctomarinus*) with no inflammatory reaction. Both scale bars = 500 µm