

Table S1. PCR primer used in this study

Use	Specificity	Gene	Primer name	Sequences (5' - 3')	Amplicon size (bp)
Real-time PCR	<i>H. cetorum</i>	<i>hsp60</i>	real HCF	ACGCTGAAGTAGAGCTTTTAGGAA	190
			real HCR	CCAGAGAGTTTGGCTAATCTTTCTTGTA	
	<i>H. delphinicola</i>	<i>hsp60</i>	real HDF	GAAGTGATTTCTGAAGAGCTTGGTA	123
			real HDR	GCTTTCGCCTTTACCGTCC	
PCR	<i>H. cetorum</i>	Type IV secretion system (<i>virB4</i>)	HC07-323F	CCACTTAATTGATGAATGTCTTGC	1014
			HC07-1337R	TCTAAAGAAGGCTTAGTGGGTGTAA	
	<i>H. delphinicola</i>	Type IV secretion system (<i>virB4</i>)	HDB-307F	GACACGCCCAATGAATACGC	1056
			HDB-1362R	GGTGGTCTTCCCAGAACCTG	

Table S2. The GenBank/EMBL/DDBJ accession numbers of the partial of *virB4* gene sequences of the *H. cetorum* and *H. delphinicola*. The GenBank accession number of *virB4* sequence in *H. delphinicola* TSB is LC774448

Dolphin sample name	Accession Number	
	<i>H. cetorum</i>	<i>H. delphinicola</i>
A1	LC735999	LC733936
A2	LC736000	LC733937
A3	LC736001	LC733938
A4	LC736002	LC733939
A5	LC736003	LC733940
A6	LC736004	LC733941
A7	LC736005	LC733942
A8	LC736006	LC733943
A9	LC736007	LC733944
A10	LC736008	LC733945
B1	LC736009	LC733946
B2	LC736010	LC733947
B3	LC736011	LC733948
C1	LC736012	LC733949
C2	LC736013	LC733950
C3	LC736014	LC733951
C4	LC736015	LC733952
C5	LC736016	LC733953
D1	LC736017	LC733954
D2	LC736018	LC733955
E1	LC736019	LC733956
E2	LC736020	LC733957
F	LC736021	LC733958
G	LC736022	LC733959
H1	LC736023	LC733960
H2	LC736024	LC733961
I1	LC736025	LC733962
I2	LC736026	LC733963
J1	LC736027	LC733964
J2	LC736028	LC733965

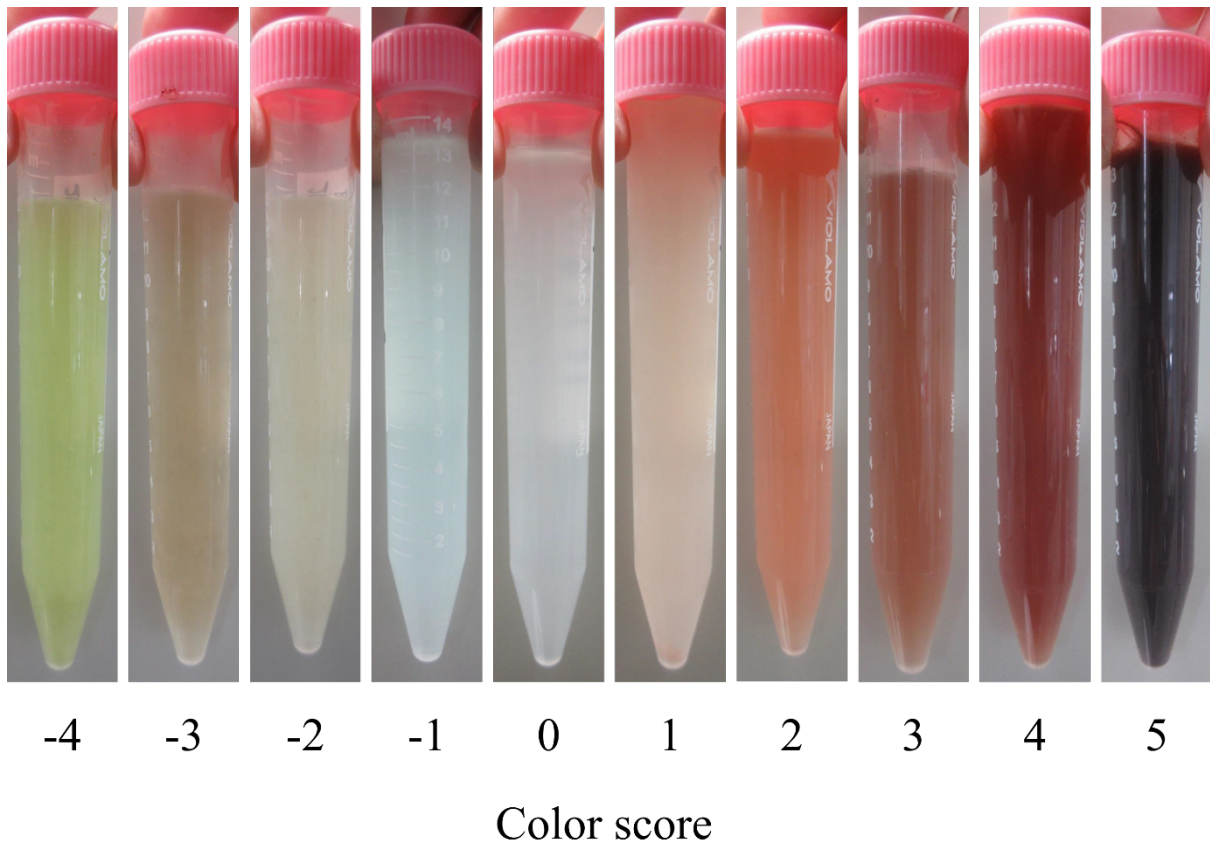


Figure S1. Samples showing the scale used for color scoring of gastric fluid. Gastric fluids obtained at each facility were scored for color by visual inspection and comparison to this scale. Color score 1 means the normal color. Color score from 1 to 5 means the degree of blood contamination, and color score from -4 to -1 indicates the degree of contamination of undigested materials etc. but not blood.

Fig. S2a

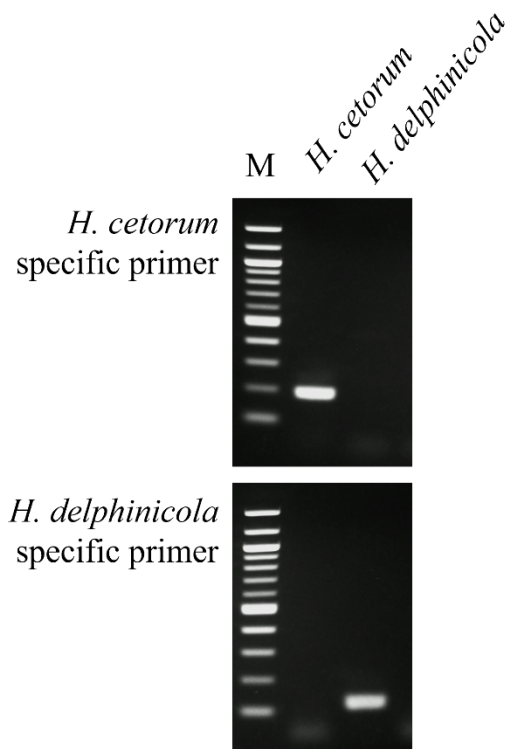


Fig. S2b

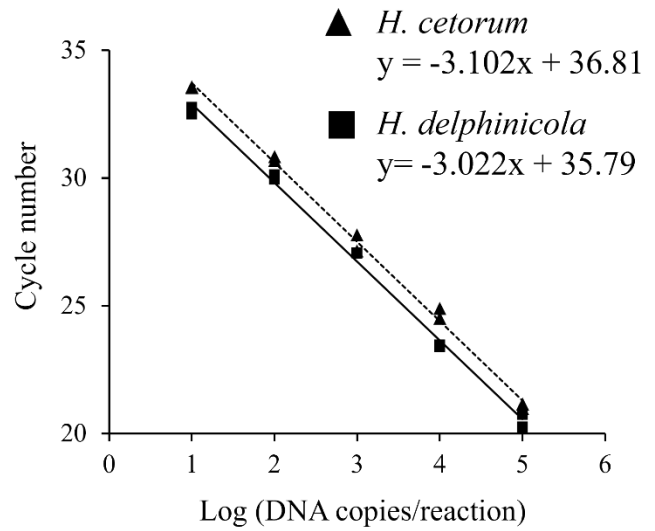


Figure S2. Specificity of detection and standard curves of *H. cetorum* and *H. delphinicola*. (a) Electrophoresis of PCR products amplified using specific primer. M: 100 bp ladder. (b) Standard curve generated by real-time PCR using serial dilutions of the plasmid of *H. cetorum* (▲ and dot-line) and *H. delphinicola* (■ and line).