
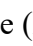





Fig. S1. Locations of fish collection: Stepnica (November 16, 2022; ) , Regalica (December 12, 2022; ) , and Dąbie (February 25, 2023; ) .

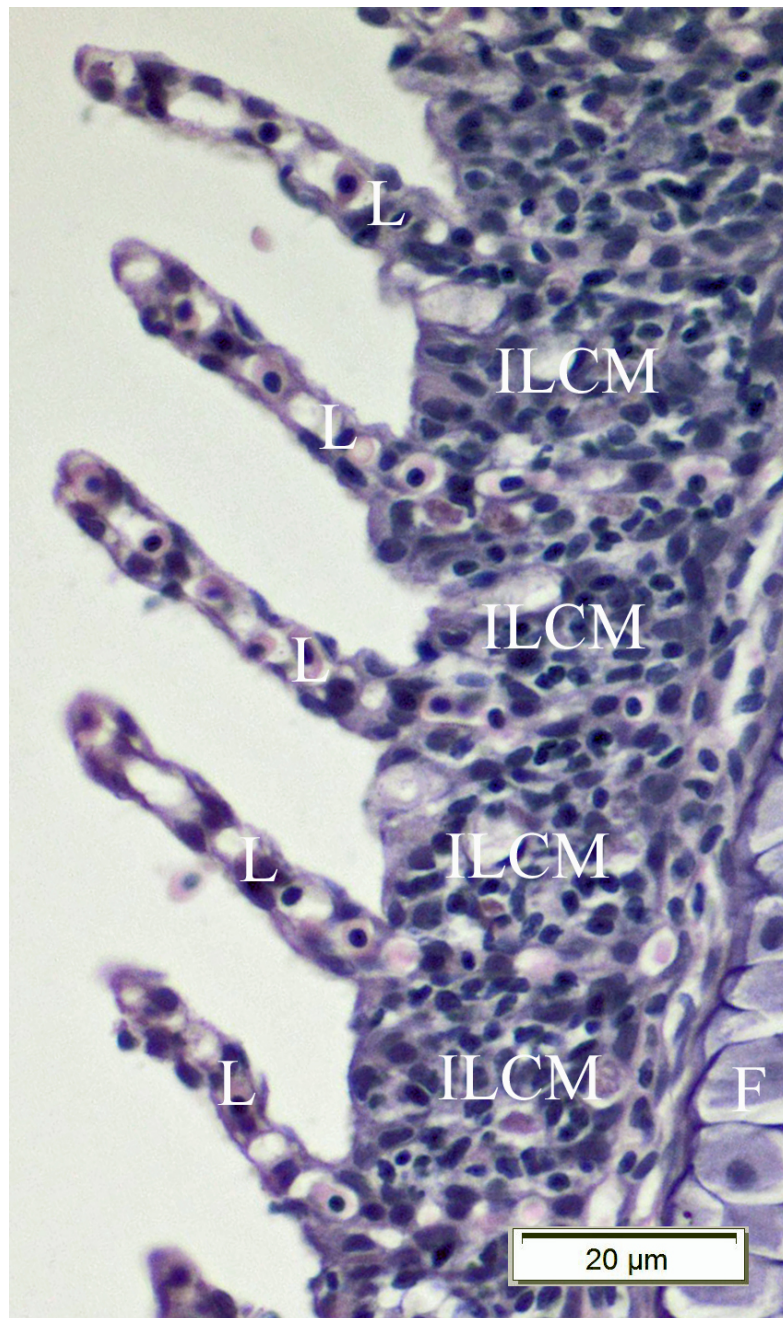


Fig. S2. Sagittal section of lamellae (L) and filament (F) of *Perca fluviatilis* from Symsarna River (in Warmia; Fig. S3) during the summer. Interlamellar cell mass (ILCM) extends to about 1/2 of the length of the lamella (L). Note that the protruding parts of lamellae are covered with a single layer of flat pavement cells. Light microscope, H&E staining (Robaczyński 2016)





Fig. S3. Symsarna River (perch fishing spot). Symsar Lake and the Symsarna River represent a river–lake system, typical of a postglacial landscape

#### LITERATURE CITED

Robaczyński E (2016) The effect of normoxia on gill apparatus in the perch *Perca fluviatilis* (L). Master's thesis, University of Rzeszów