

Tidal regimes of temperate coasts and their influences on aerial exposure for intertidal organisms

Gerhard Randall Finke^{1,*}, Sergio A. Navarrete^{1,2}, Francisco Bozinovic²

¹Estación Costera de Investigaciones Marinas, and ²Center for Advanced Studies in Ecology and Biodiversity, Departamento de Ecología, Facultad de Ciencias Biológicas, Pontificia Universidad Católica, Alameda 340, Casilla 114-D, Santiago, Chile

*Email: gfinke@bio.puc.cl

Marine Ecology Progress Series 343:57–62 (2007)

Appendix 1. Time series of the cumulative mid-summer day aerial exposure for 3 tidal heights

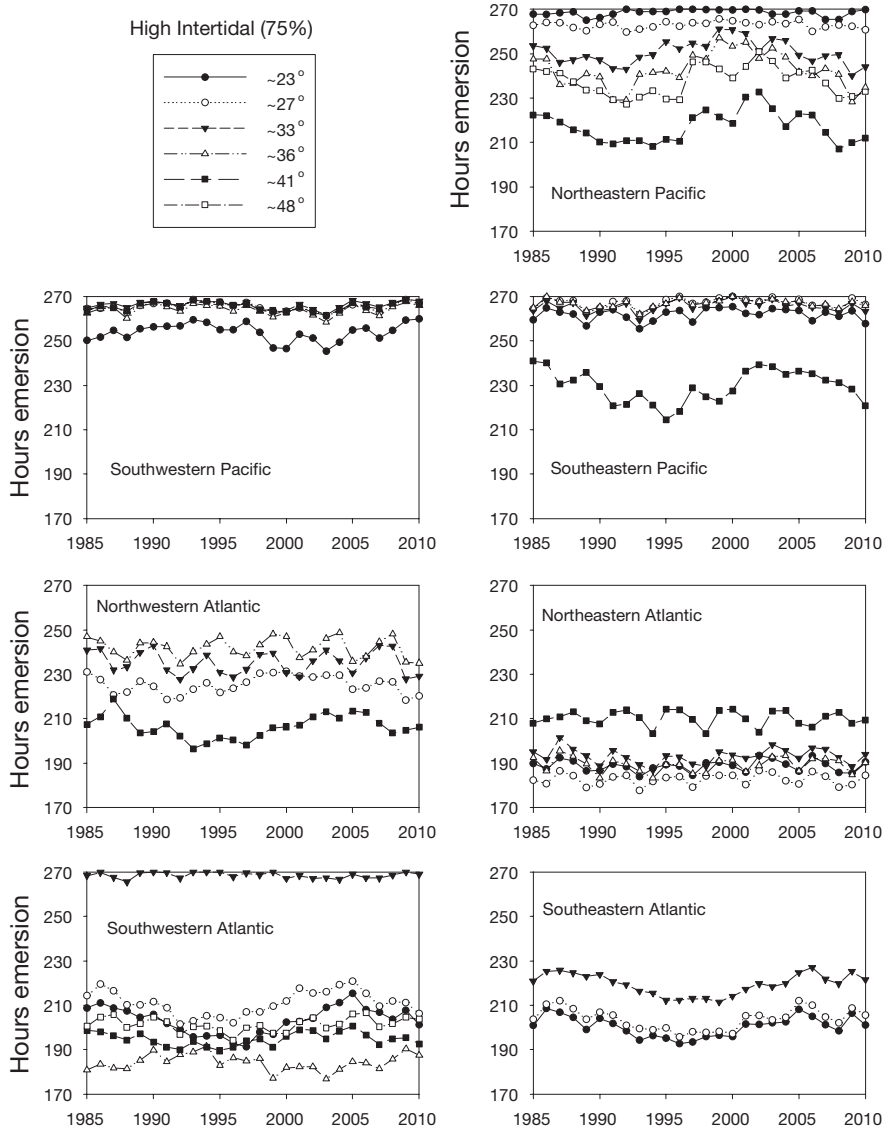


Fig. A1. Cumulative midday aerial exposure during summer at 75% of the tidal range. Sites of similar latitude share a common symbol

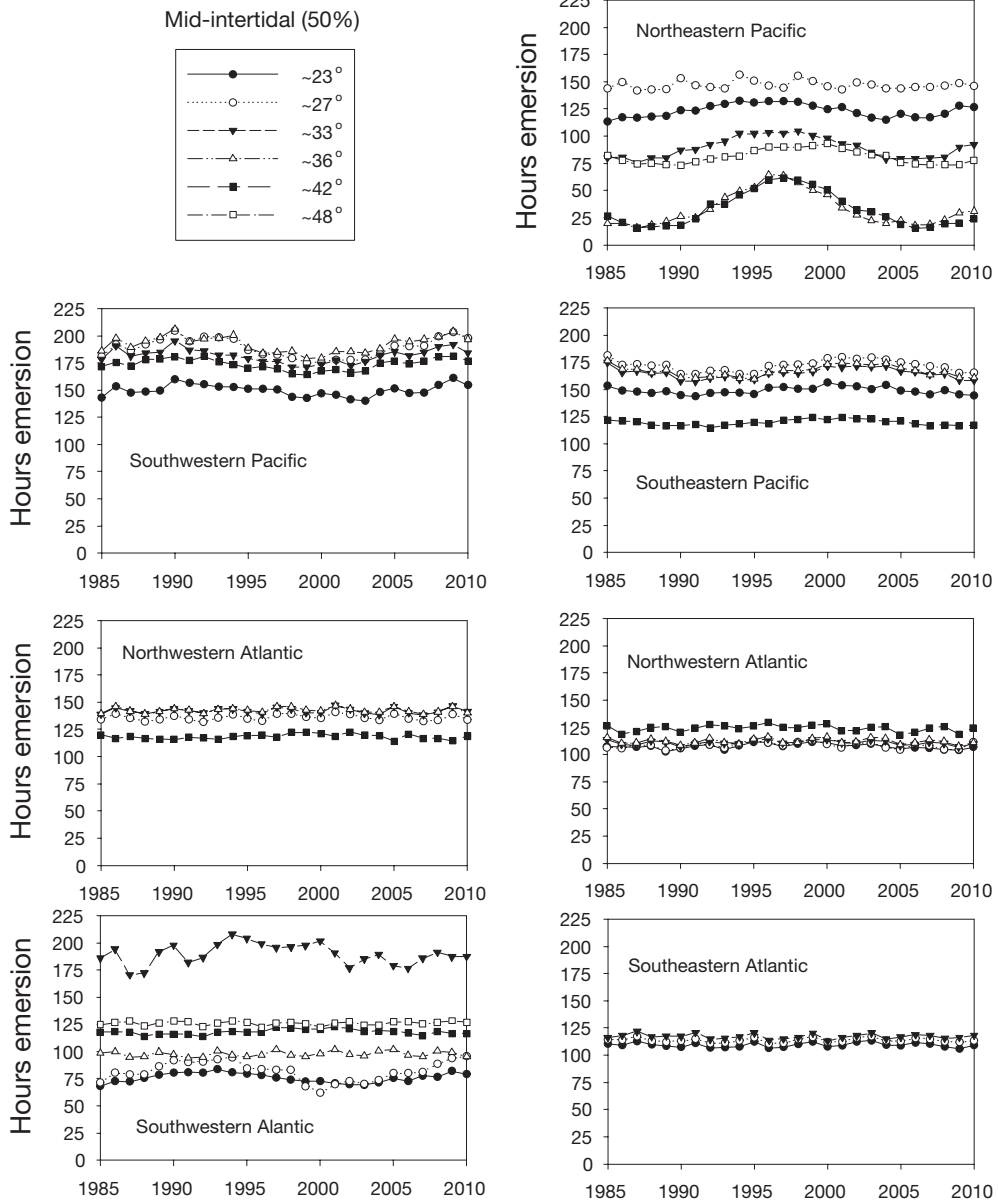


Fig. A2. Cumulative midday aerial exposure during summer at 50% of the tidal range. Sites of similar latitude share a common symbol

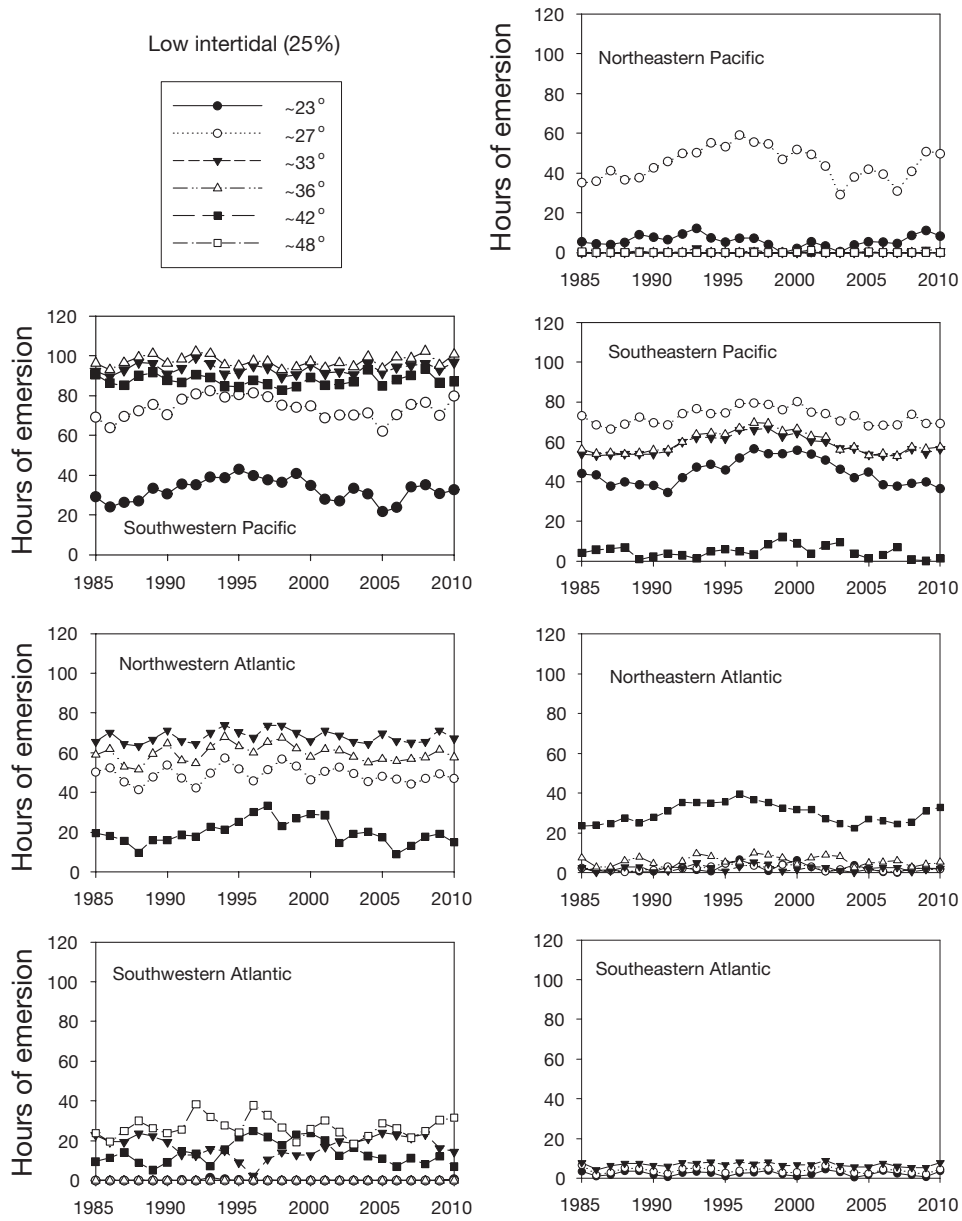


Fig. A3. Cumulative midday aerial exposure during summer at 25% of the tidal range. Sites of similar latitude share a common symbol