

---

*The following appendix accompanies the article*

## **Marine shore fishes and biogeographic subdivisions of the Tropical Eastern Pacific**

**D. Ross Robertson<sup>1,\*</sup>, Katie L. Cramer<sup>2</sup>**

<sup>1</sup>Smithsonian Tropical Research Institute, Balboa, Republic of Panamá

<sup>2</sup>Center for Marine Biodiversity and Conservation, Scripps Institution of Oceanography, University of California, San Diego, California, USA

*\*Email: drr@stri.org*

*Marine Ecology Progress Series 380:1–16 (2009)*

**Appendix 1.** Cluster dendrograms of relationships among different groups of fishes in the Tropical Eastern Pacific biogeographic region. Those groups include all species and all regional endemics, plus 3 habitat categories within each of those 2 groups: reef-fishes, soft-bottom fishes, and pelagic fishes

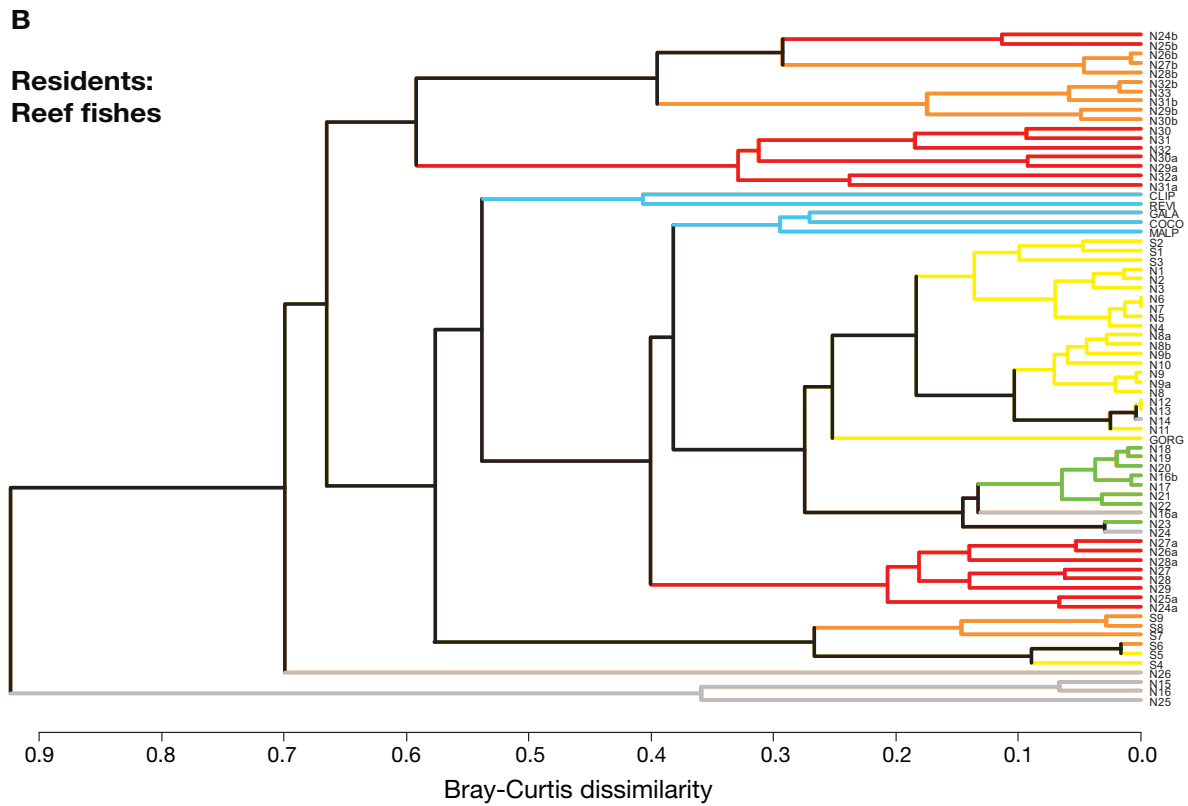
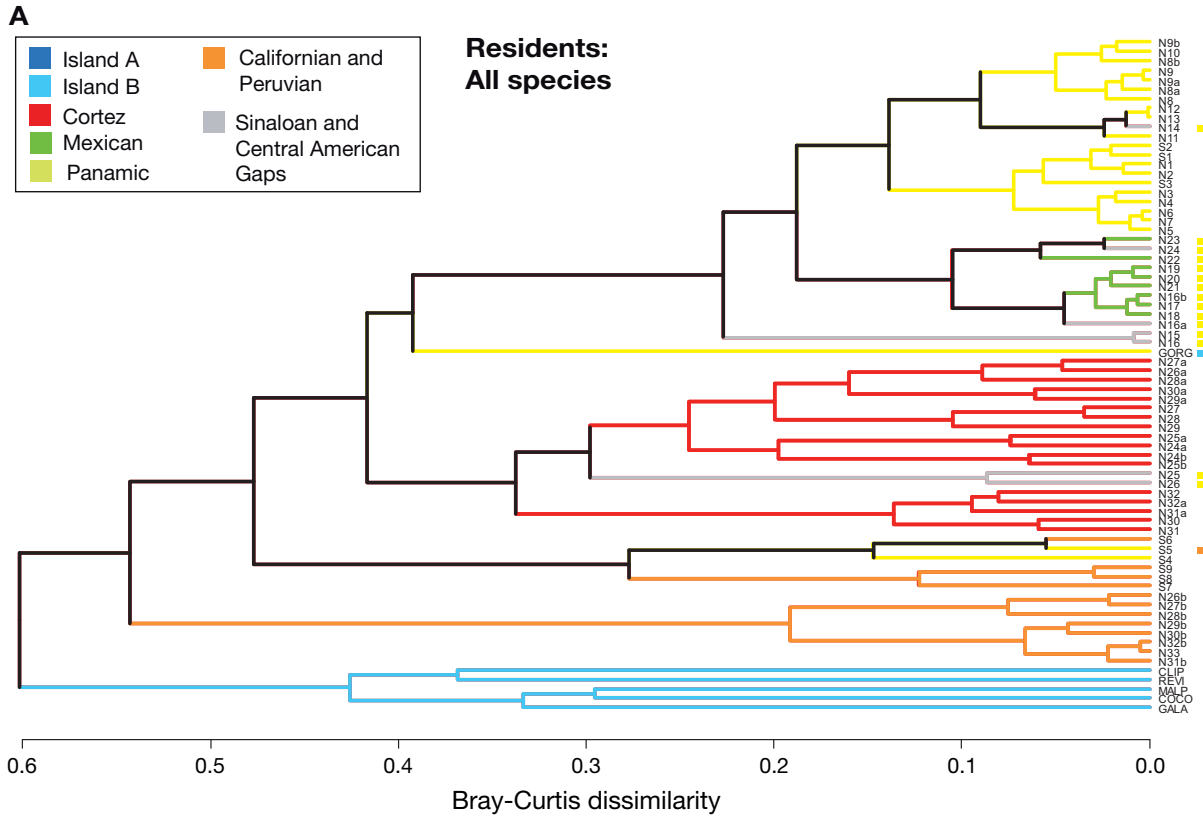
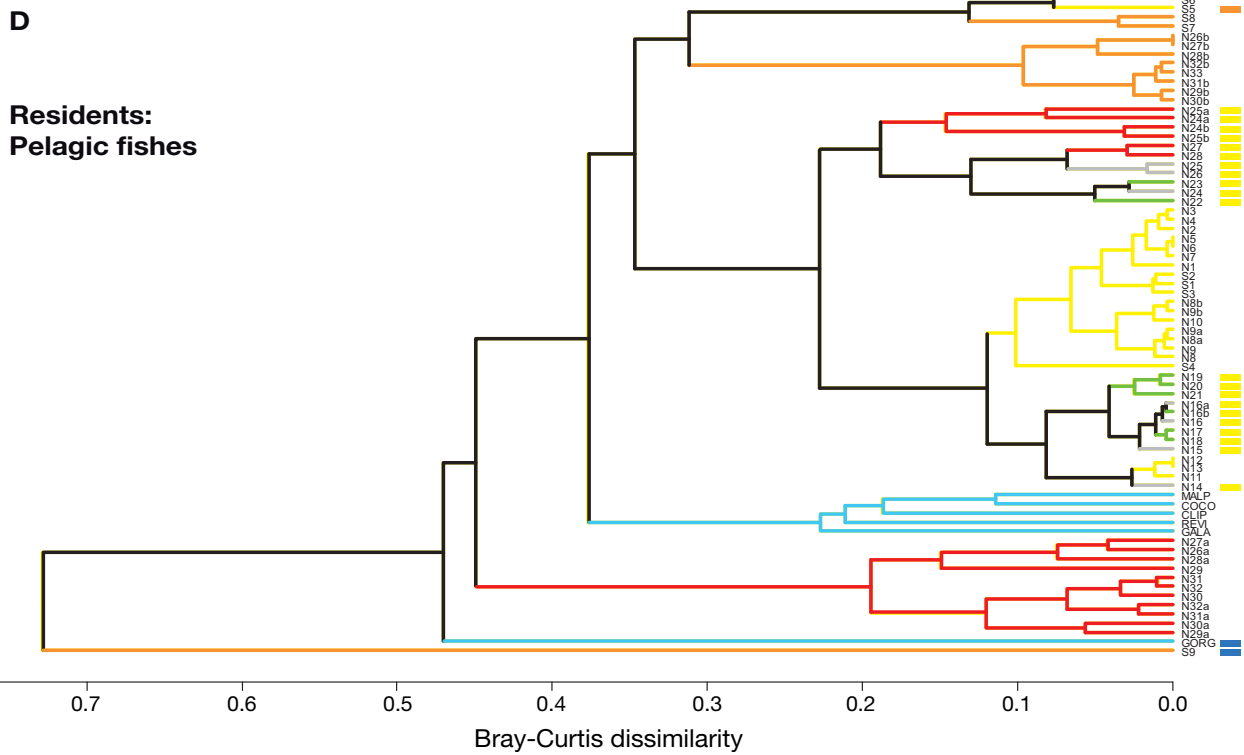
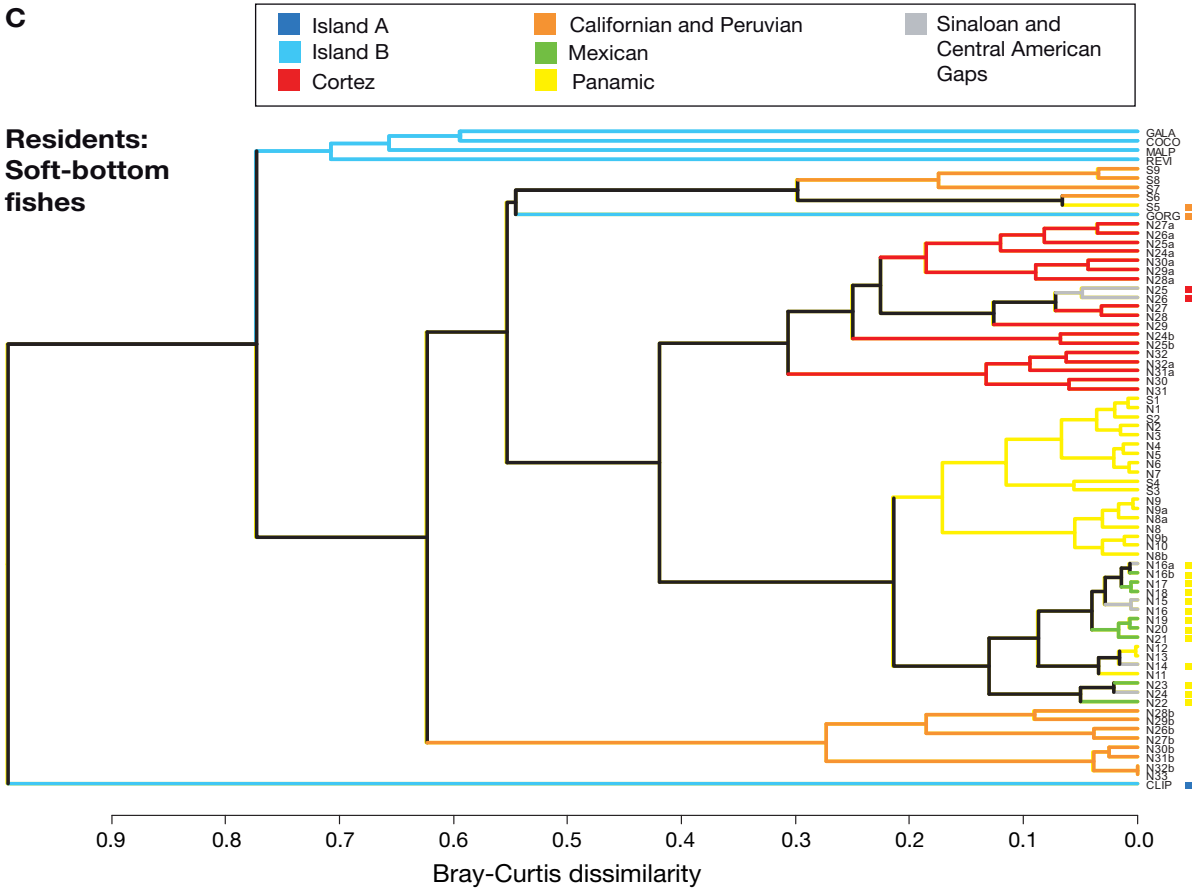
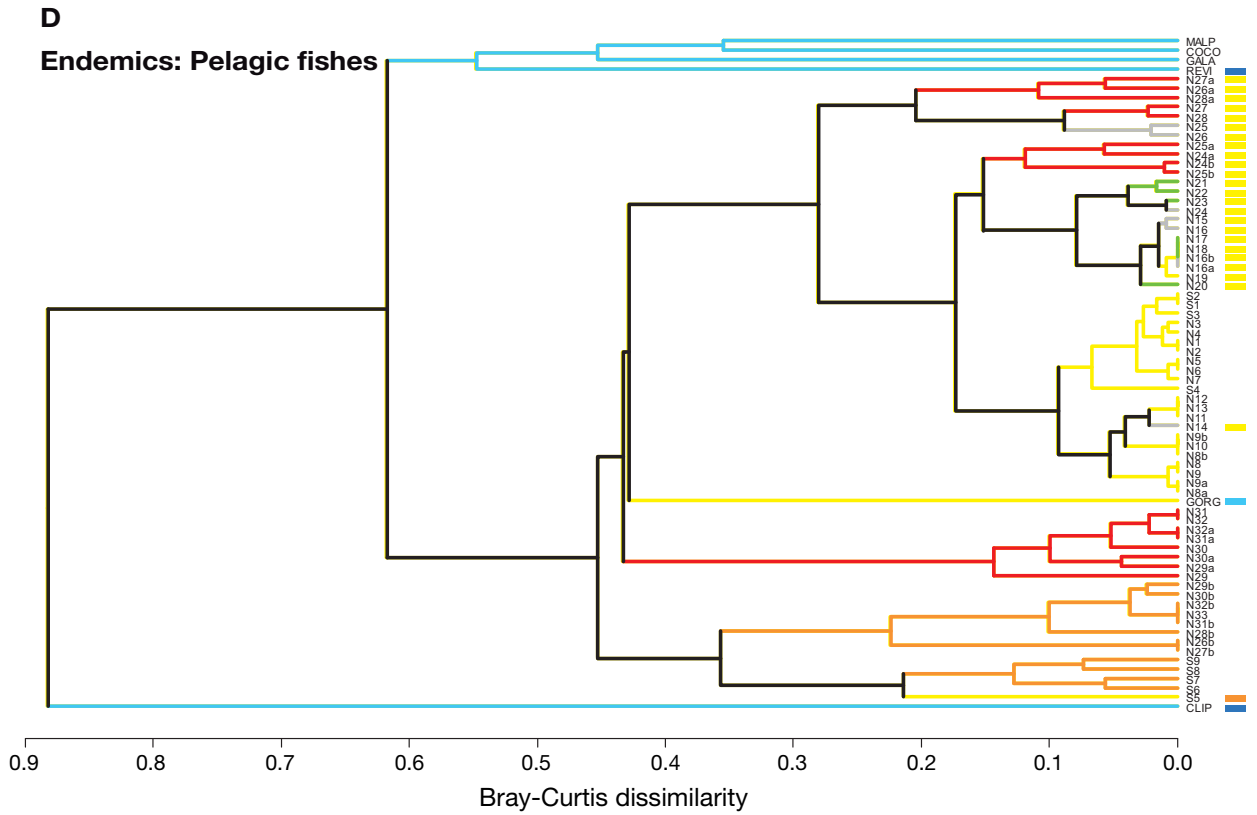
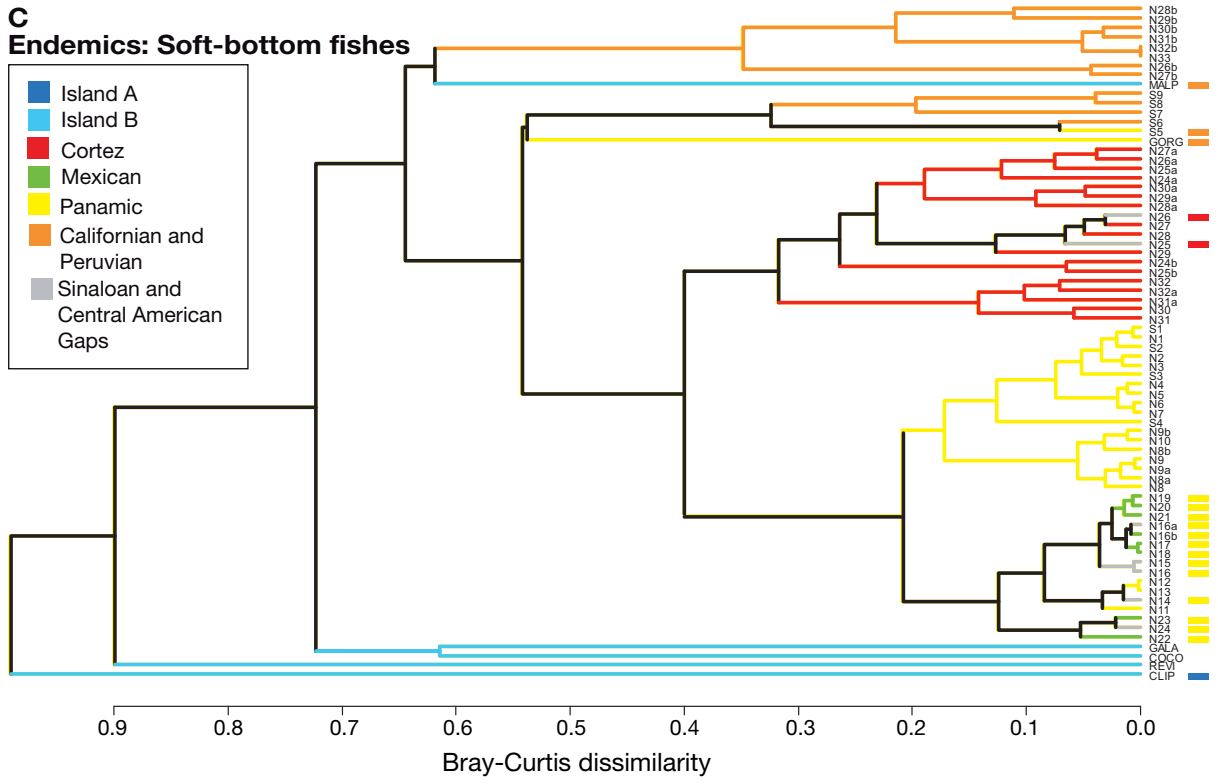


Fig. A1. Cluster dendrogram of relationships among Tropical Eastern Pacific (TEP) resident species. x-axis = Bray-Curtis dissimilarity. Dendrogram lines indicate province boundaries after Hastings (2000). Colored marks on right indicate changes in provincial assignments of segments arising from present ANOSIM analyses. Continental and island segments are shown in Fig. 1; island



groups A & B differ among dendrograms (see Fig. 2 for definitions). N: north; S: south; GORG: Gorgona; CLIP: Clipperton; REVI: Revillagigedos; MALP: Malpelo; COCO: Cocos; GALA: Galapagos





groups A & B differ among dendrograms (see Fig. 3 for definitions). N: north; S: south; GORG: Gorgona; CLIP: Clipperton; REVI: Revillagigedos; MALP: Malpelo; COCO: Cocos; GALA: Galapagos