

Acoustic ecology of Antarctic pinnipeds

Ilse Van Opzeeland^{1,*}, Sofie Van Parijs², Horst Bornemann¹, Stephan Frickenhaus¹,
Lars Kindermann¹, Holger Klinck³, Joachim Plötz¹, Olaf Boebel¹

¹Alfred Wegener Institute for Polar and Marine Research, Am alten Hafen 26, 27568 Bremerhaven, Germany

²Northeast Fisheries Science Center, NOAA, 166 Water Street, Woods Hole, Massachusetts 02543, USA

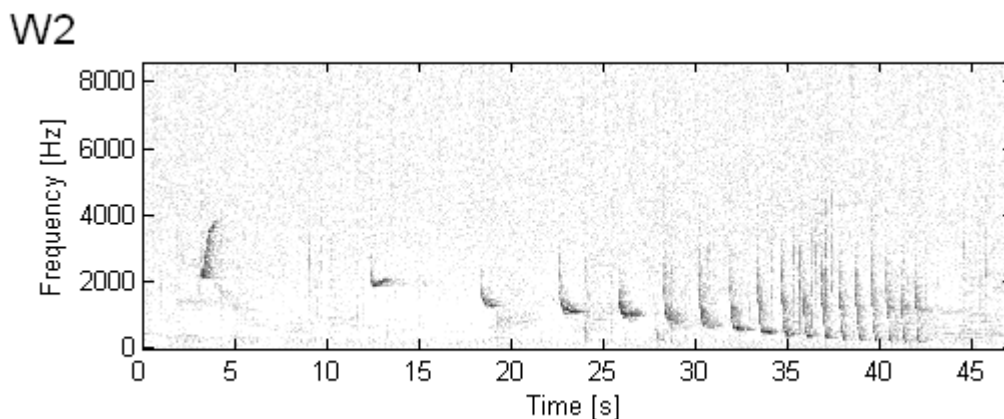
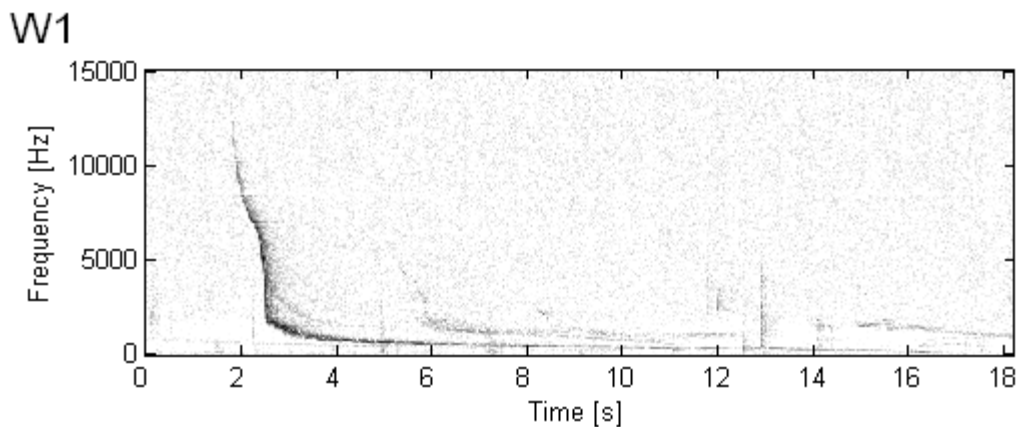
³Cooperative Institute for Marine Resources Studies, Oregon State University, Hatfield Marine Science Center,
2030 SE Marine Science Drive, Newport, Oregon 97365, USA

*Email: ilse.van.opzeeland@awi.de

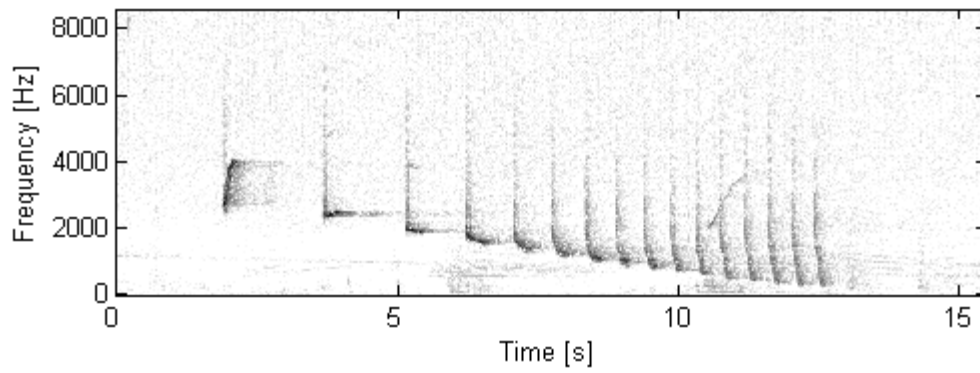
Marine Ecology Progress Series 414: 267–291 (2010)

Supplement 1. Call types of various seal species (for audio files of each call type, see Supplement 2 at www.int-res.com/articles/suppl/m414p267_supp/)

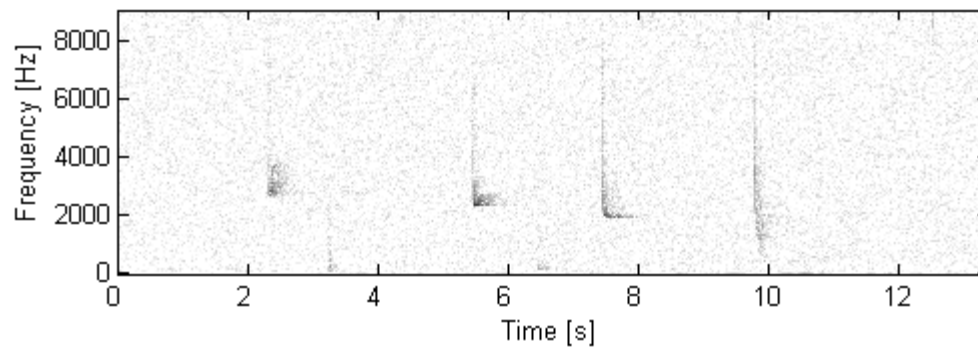
Fig. S1. Weddell seal call types W1–W14. All call types except call type W4 have been described previously (Thomas & Kuechle 1982, Thomas & Stirling 1983, Terhune et al. 1994, Pahl et al. 1997, Moors & Terhune 2004, Terhune & Dell’Apa 2006).



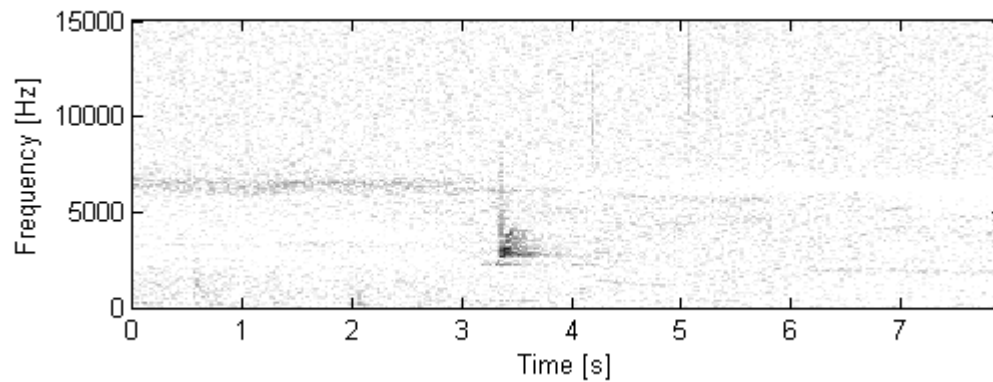
W3



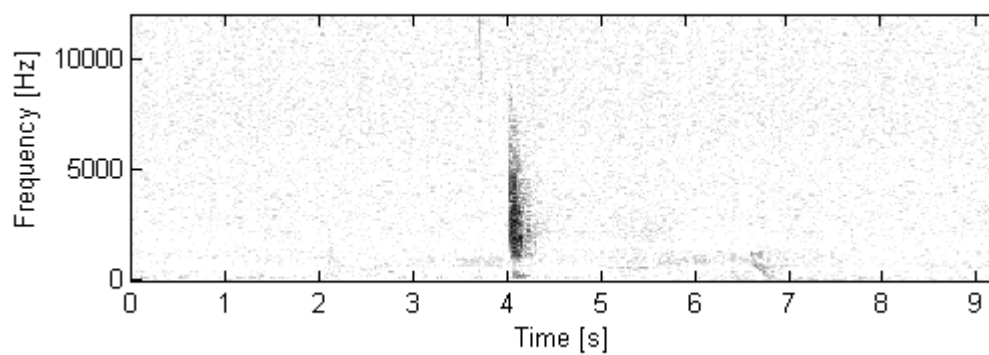
W4



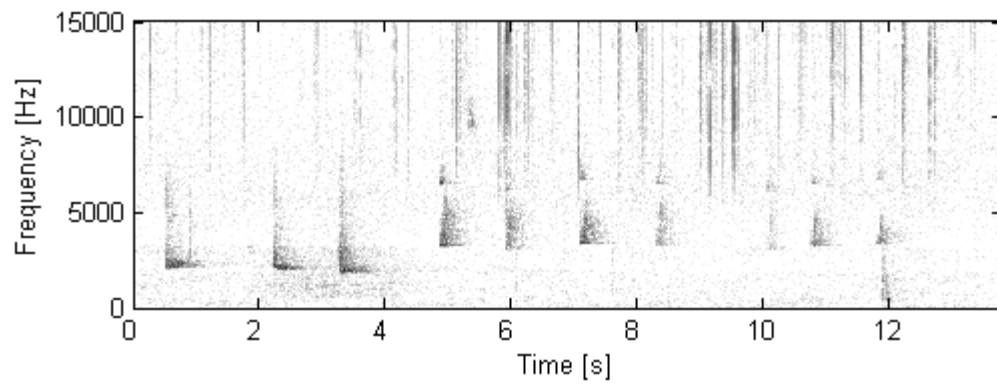
W5



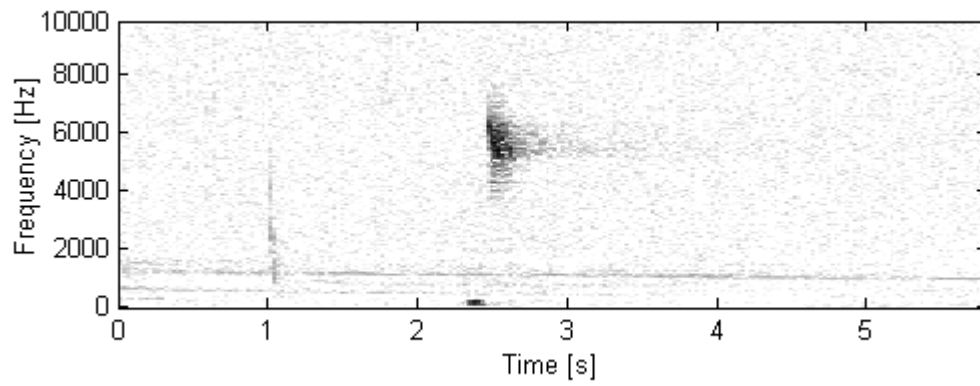
W6



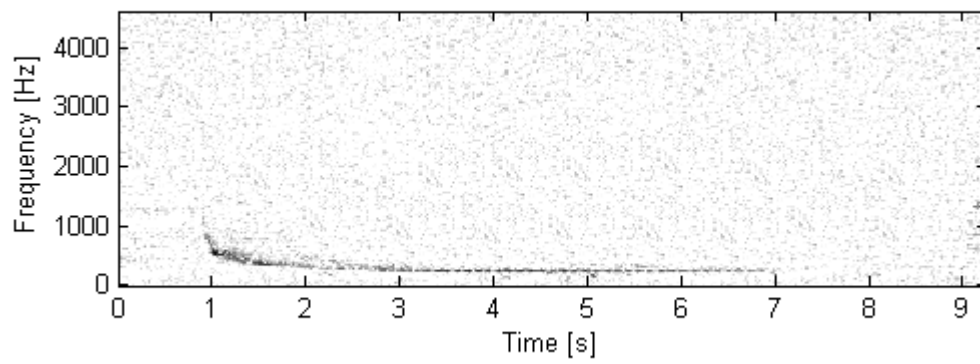
W7



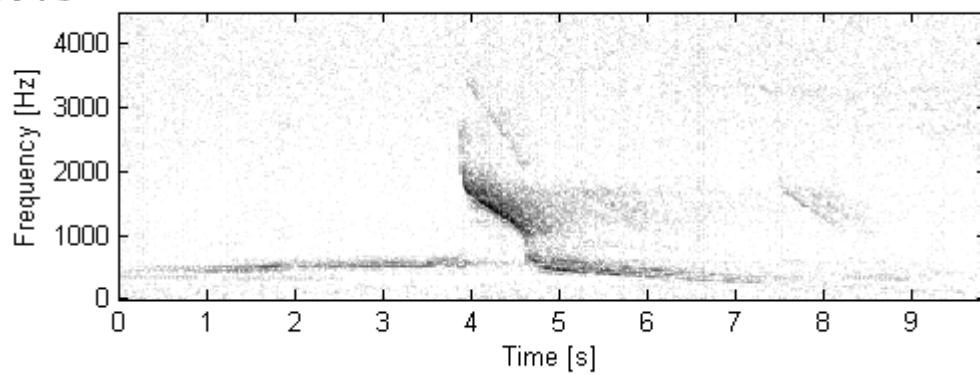
W8



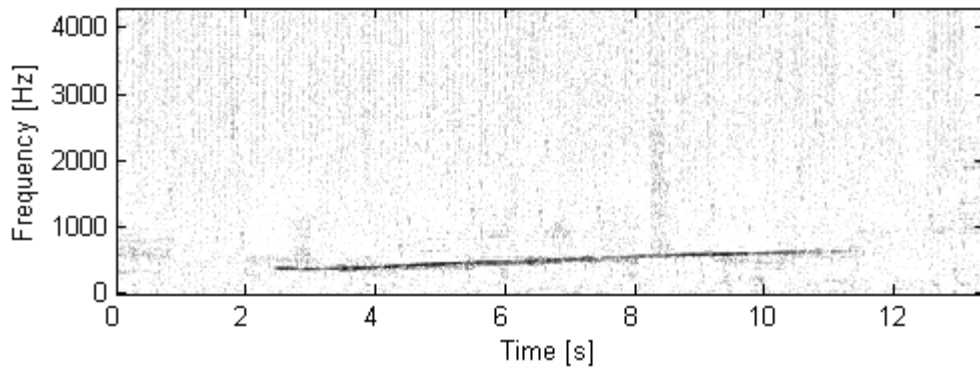
W9



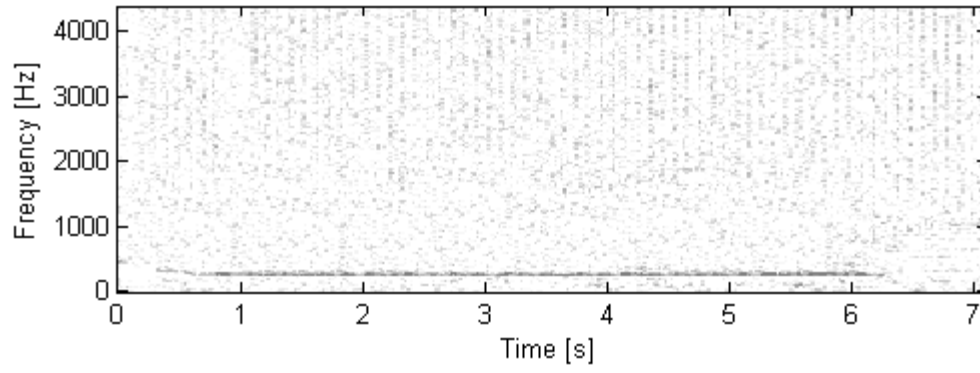
W10



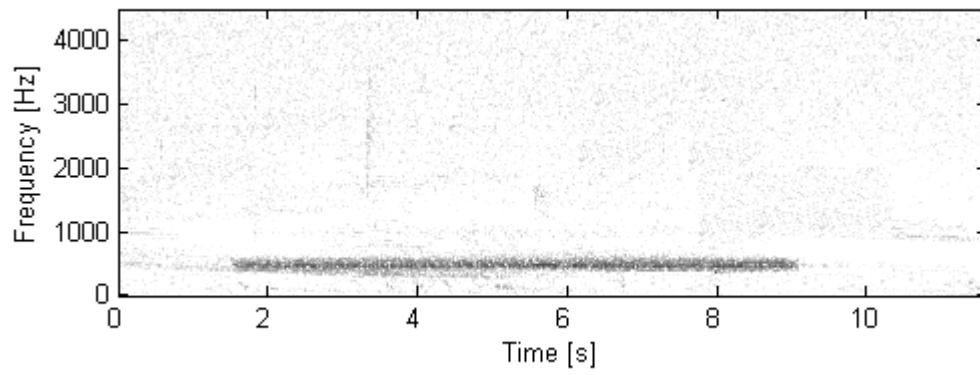
W11



W12



W13



W14

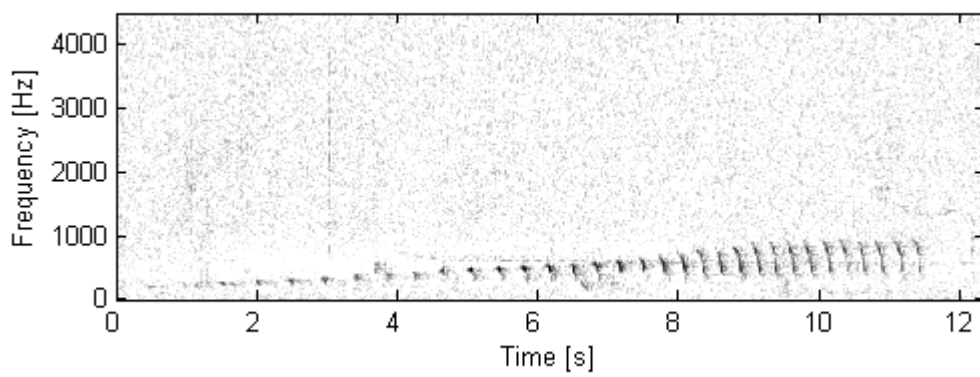
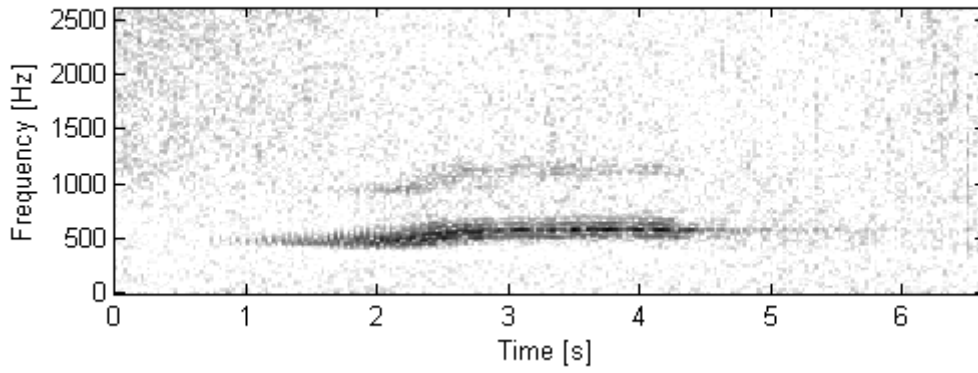
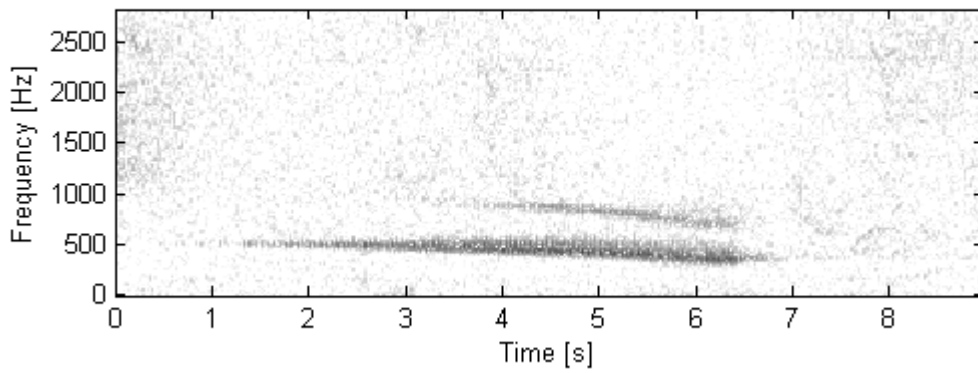


Fig. S2. Leopard seal call types L1–L7. All leopard seal call types recorded by the PALAOA station have been described in previous studies (Stirling & Siniff 1979, Rogers et al. 1995, 1996).

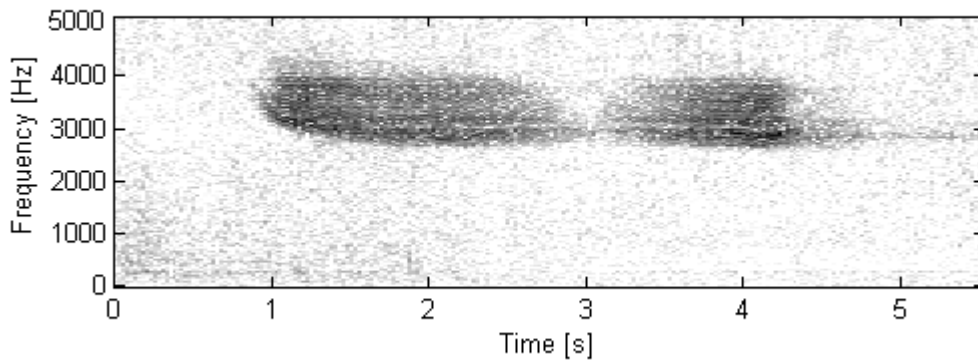
L1



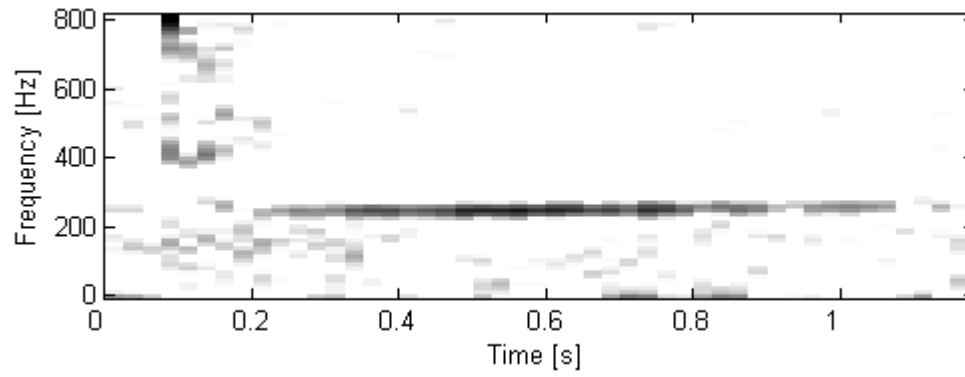
L2



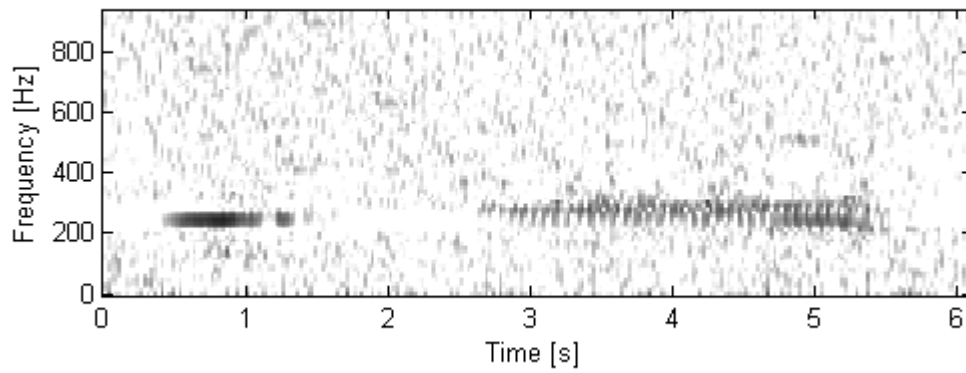
L3



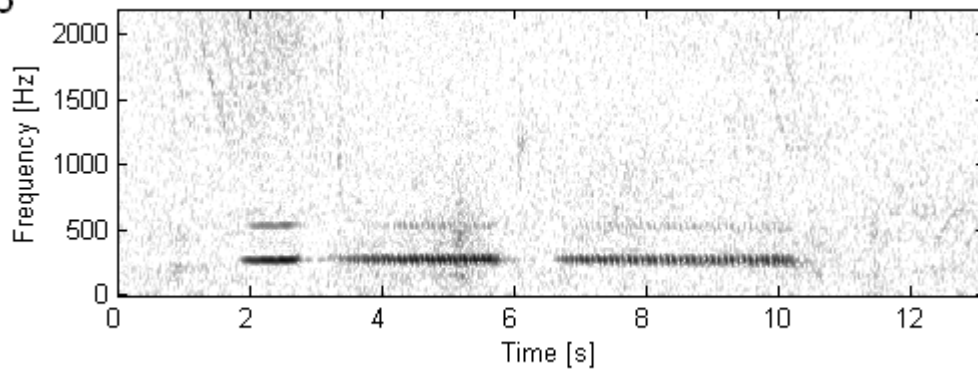
L4



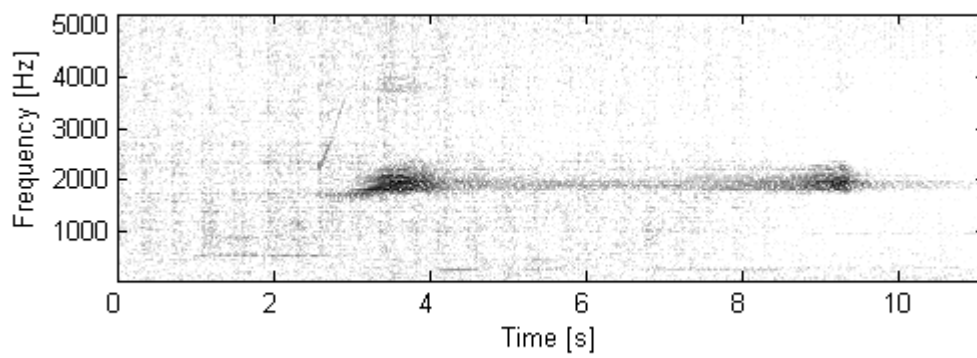
L5



L6



L7: mid double trill



L7: mid single trill

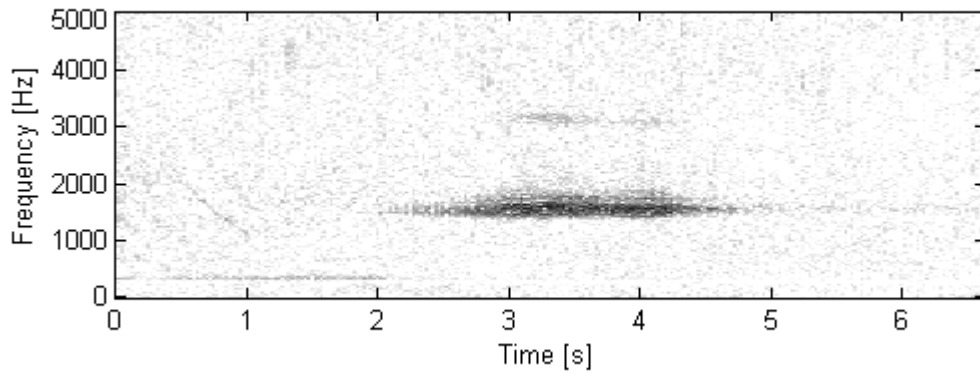
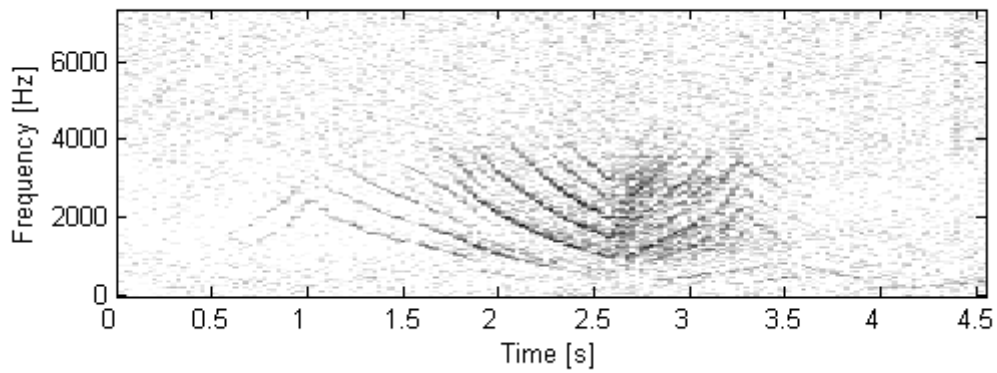
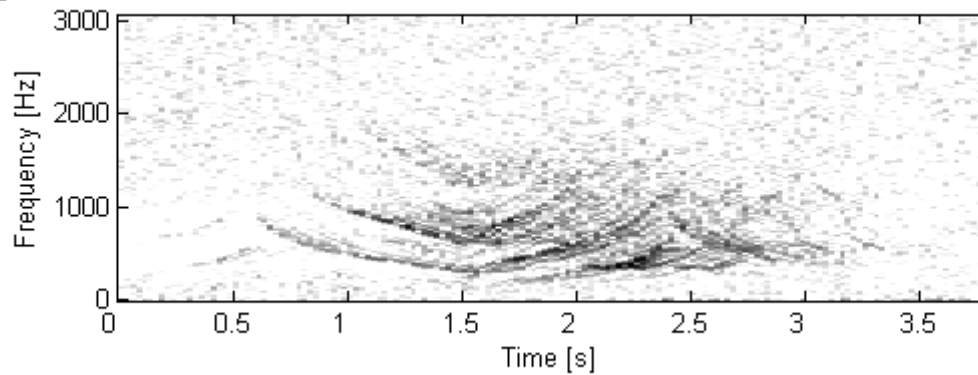


Fig. S3. Ross seal call types R1–R5. Call types R1, R2, R3 and R5 have been described previously (Watkins & Schevill 1968, Stacey 2006). Call type R4 has so far only been found to be present in the PALAOA recordings (Seibert et al. 2007).

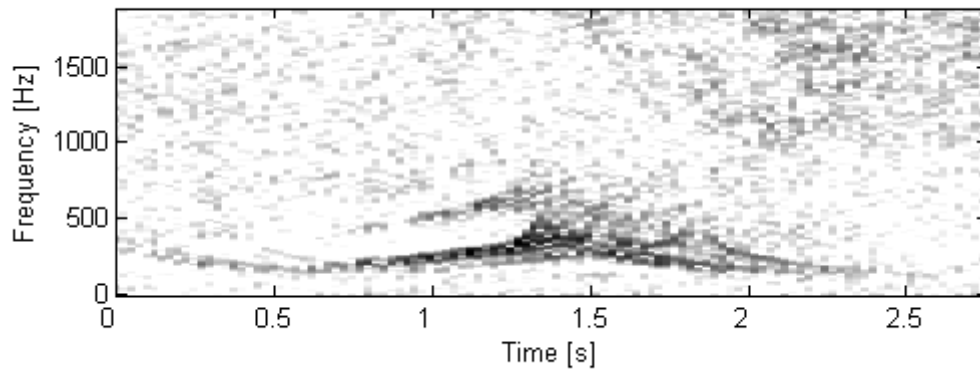
R1



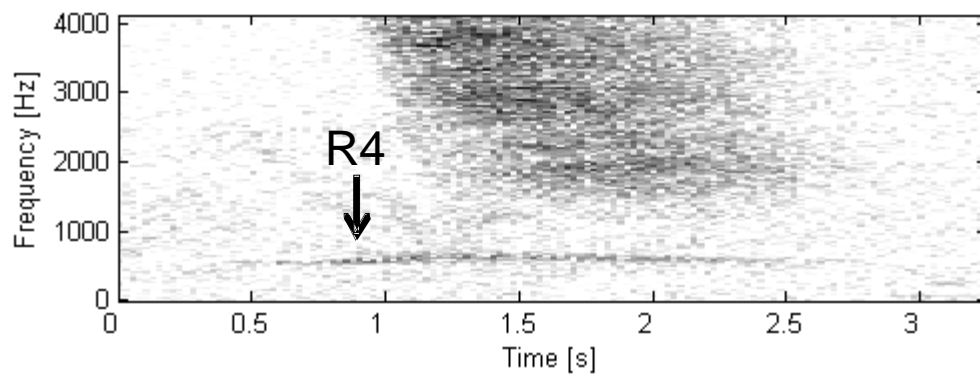
R2



R3



R4



R5

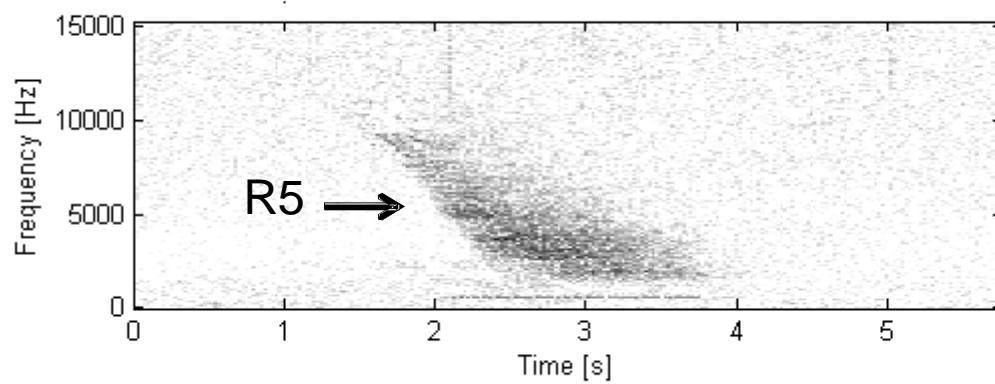
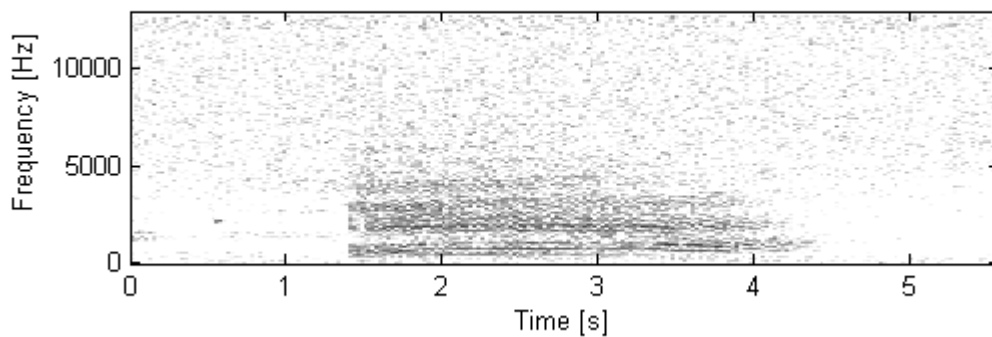
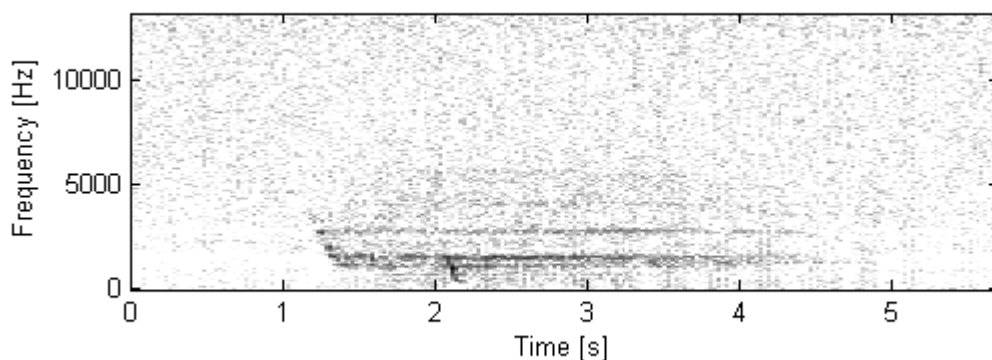


Fig. S4. Crabeater call type C1 (comprises low and high moan). Both C1 call types (low and high moan) have been described previously (Stirling & Siniff 1979, Thomas & DeMaster 1982, Klinck et al. 2010).

C1: low moan



C1: high moan



LITERATURE CITED

- Klinck H, Mellinger DK, Klinck K, Hager J, Kindermann L, Boebel O (2010) Underwater calls of the crabeater seal (*Lobodon carcinophaga*). J Acoustic Soc Am (in press)
- Moors HB, Terhune JM (2004) Repetition patterns in Weddell seal (*Leptonychotes weddellii*) underwater multiple element calls. J Acoust Soc Am 116:1261–1270
- Pahl BC, Terhune JM, Burton HR (1997) Repertoire and geographic variation in underwater vocalizations of Weddell seals (*Leptonychotes weddellii*, Pinnipedia: Phocidae) at the Vestfold Hills, Antarctica. Aust J Zool 45:171–187
- Rogers TL, Cato DH, Bryden MM (1995) Underwater vocal repertoire of the leopard seal (*Hydrurga leptonyx*) in Prydz Bay, Antarctica. In: Kastelein RA, Thomas JA, Nachtigall PE (eds) Sensory systems of aquatic mammals. De Spil Publishers, Woerden, p 223–236
- Rogers TL, Cato DH, Bryden MM (1996) Behavioral significance of underwater vocalizations of captive leopard seals, *Hydrurga leptonyx*. Mar Mamm Sci 12:414–427
- Seibert AM, Klinck H, Kindermann L, Bornemann H, Van Opzeeland I, Plötz J, Boebel O (2007) Characteristics of underwater calls of the Ross seal. 17th Biennial Conference on the Biology of Marine Mammals, 29 November–3 December 2007, Cape Town

- Stacey RM (2006) Airborne and underwater vocalizations of the Antarctic Ross seal (*Ommatophoca rossii*). MSc Thesis, Western Illinois University, Moline, IL
- Stirling I, Siniff DB (1979) Underwater vocalizations of leopard seals (*Hydrurga leptonyx*) and crabeater seals (*Lobodon carcinophagus*) near the South Shetland Islands, Antarctica. *Can J Zool* 57:1244–1248
- Terhune JM, Dell’Apa A (2006) Stereotyped calling patterns of a male Weddell seal (*Leptonychotes weddellii*). *Aquat Mamm* 32:175–181
- Terhune JM, Burton H, Green K (1994) Weddell seal in-air call sequences made with closed mouth. *Polar Biol* 14:117–122
- Thomas JA, DeMaster DP (1982) An acoustic technique for determining diurnal activities in leopard (*Hydrurga leptonyx*) and crabeater (*Lobodon carcinophagus*) seal. *Can J Zool* 60:2028–2031
- Thomas JA, Kuechle VB (1982) Quantitative analysis of Weddell seal (*Leptonychotes weddellii*) underwater vocalizations at McMurdo Sound, Antarctica. *J Acoust Soc Am* 72:1730–1738
- Thomas JA, Stirling I (1983) Geographic variation in the underwater vocalizations of Weddell seals (*Leptonychotes weddellii*) from Palmer Peninsula and McMurdo Sound, Antarctica. *Can J Zool* 61:2203–2212
- Watkins WA, Schevill WE (1968) Underwater playback of their own sounds to *Leptonychotes* (Weddell seals). *J Mammal* 49:287–296