

The following supplement accompanies the article

# High resolution mapping of community structure in three glass sponge reefs (Porifera, Hexactinellida)

Jackson W. F. Chu, Sally P. Leys\*

Department of Biological Sciences, CW 405, University of Alberta, Edmonton, Alberta T6G 2E9, Canada

\*Corresponding author. Email: sleys@ualberta.ca

*Marine Ecology Progress Series* 417:97–113 (2010)

## Supplement 1. Sponge images

Fig. S1. Images of the Howe, Fraser and Galiano glass sponge reefs observed in this study

Fig. S2. Discoveries and observations of the natural history of glass sponge reefs. (A) A dense bed of the seawhip *Halipterus willeomoesi* was discovered on the periphery of the Howe reef. (B) The dorid nudibranch *Peltodoris lentiginosa* was discovered to be a predator on the glass sponges. (C) Decorator crabs such as *Chorilia longipes* were observed inside the oscula of the glass sponges using tissue for decoration. (D) Glass sponge rubble from mechanically broken sponges was observed at Howe reef



Figure S1.

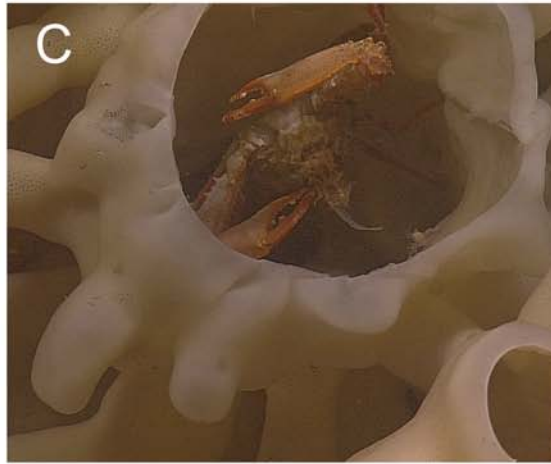
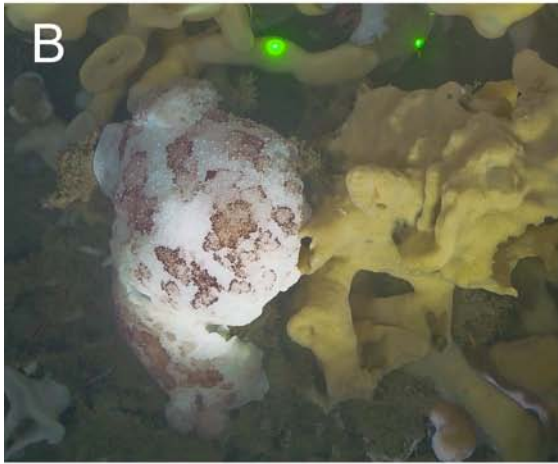


Figure S2.