

The following supplement accompanies the article

Geographically and environmentally driven spawning distributions of tuna species in the western Mediterranean Sea

P. Reglero^{1,*}, L. Ciannelli², D. Alvarez-Berastegui³, R. Balbín¹, J. L. López-Jurado¹, F. Alemany¹

¹Instituto Español de Oceanografía, Centre Oceanogràfic de les Balears, Moll de Ponent s/n, 07015 Palma de Mallorca, Spain

²College of Earth, Ocean and Atmospheric Sciences, 104 CEOAS Administration Building, Oregon State University, Corvallis, Oregon 97331-5503, USA

³ICTS SOCIB — Sistema D'observació i Predicció Costaner de les Illes Balears. Parc Bit, Naorte, Bloc A 2-3, Palma de Mallorca, Spain

*Email: patricia.reglero@ba.ieo.es

Marine Ecology Progress Series 463:273–284 (2012)

Supplement. Spatial distribution of tuna larvae in 2001 to 2005 in relation to salinity and geostrophic velocity for *Thunnus alalunga* (Figs. S1 & S2), *T. thynnus* (Figs. S3 & S4), and *Auxis rochei* (Figs. S5 & S6). Horizontal hydrographic fields were objectively analyzed onto a regular grid by minimum error variance methods. An isotropic Gaussian model was assumed for the anomaly spatial correlation, with a characteristic correlation scale set to 54 km, chosen according to data correlation statistics (common values oscillate between 15 and 30 km when the dynamic is dominated by mesoscalar structures, and up to 100 km for bigger structures). Relative stage-1 larval abundances are shown in the maps as dots.

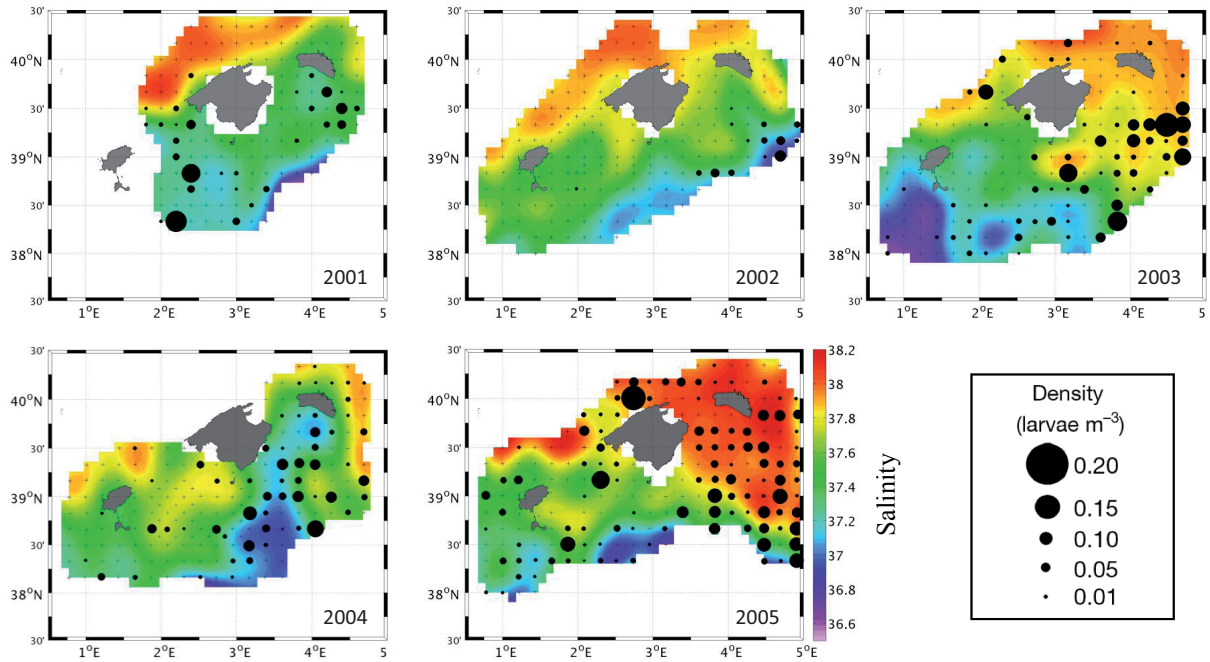


Fig. S1. *Thunnus alalunga*. Spatial distribution of albacore in relation to salinity

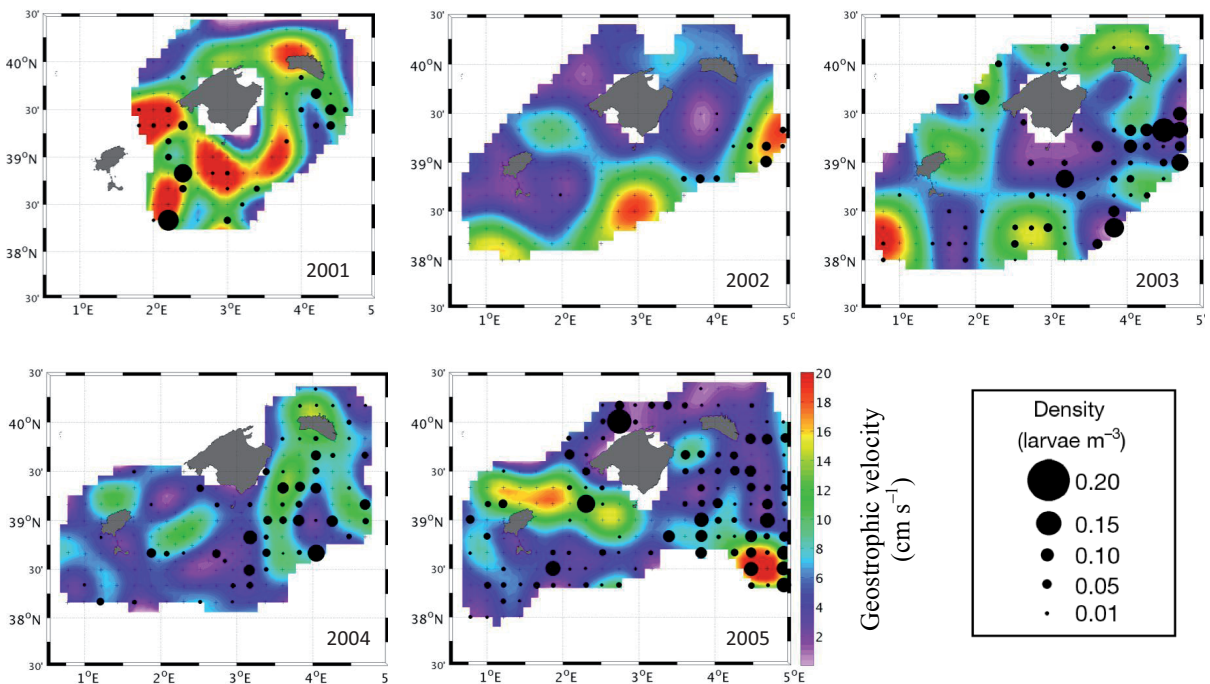


Fig. S2. *Thunnus alalunga*. Spatial distribution of albacore in relation to geostrophic velocity

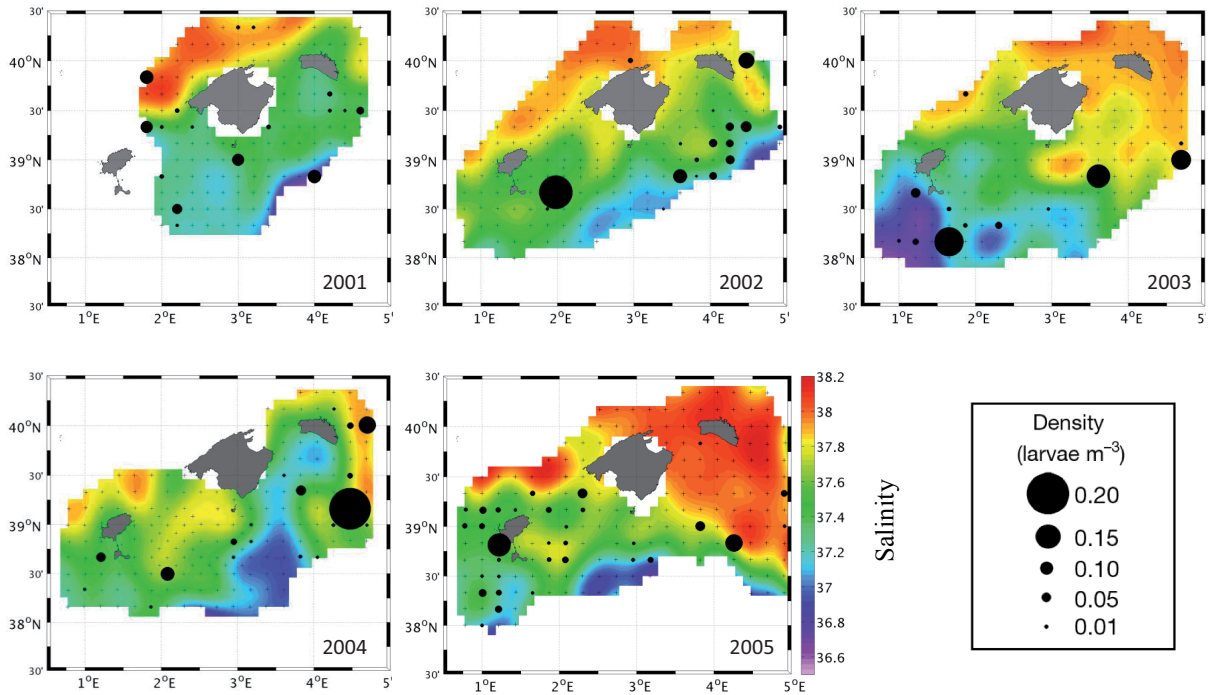


Fig. S3. *Thunnus thynnus*. Spatial distribution of bluefin tuna in relation to salinity

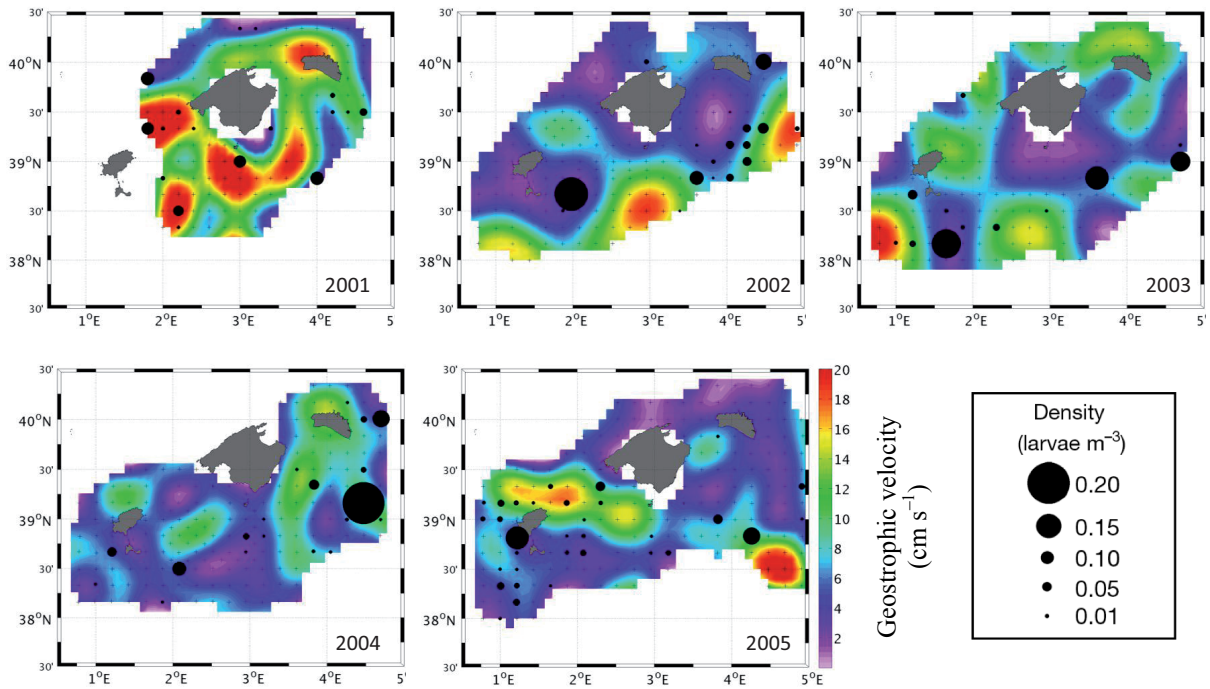


Fig. S4. *Thunnus thynnus*. Spatial distribution of bluefin tuna in relation to geostrophic velocity

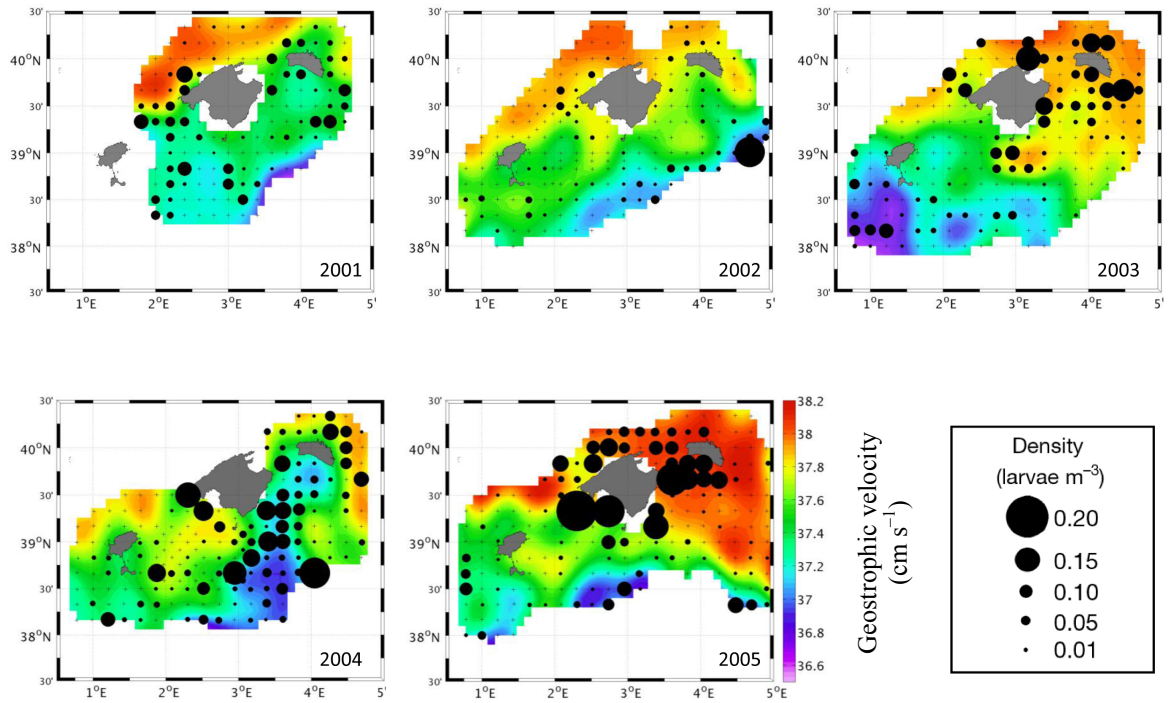


Fig. S5. *Auxis rochei*. Spatial distribution of bullet tuna in relation to salinity

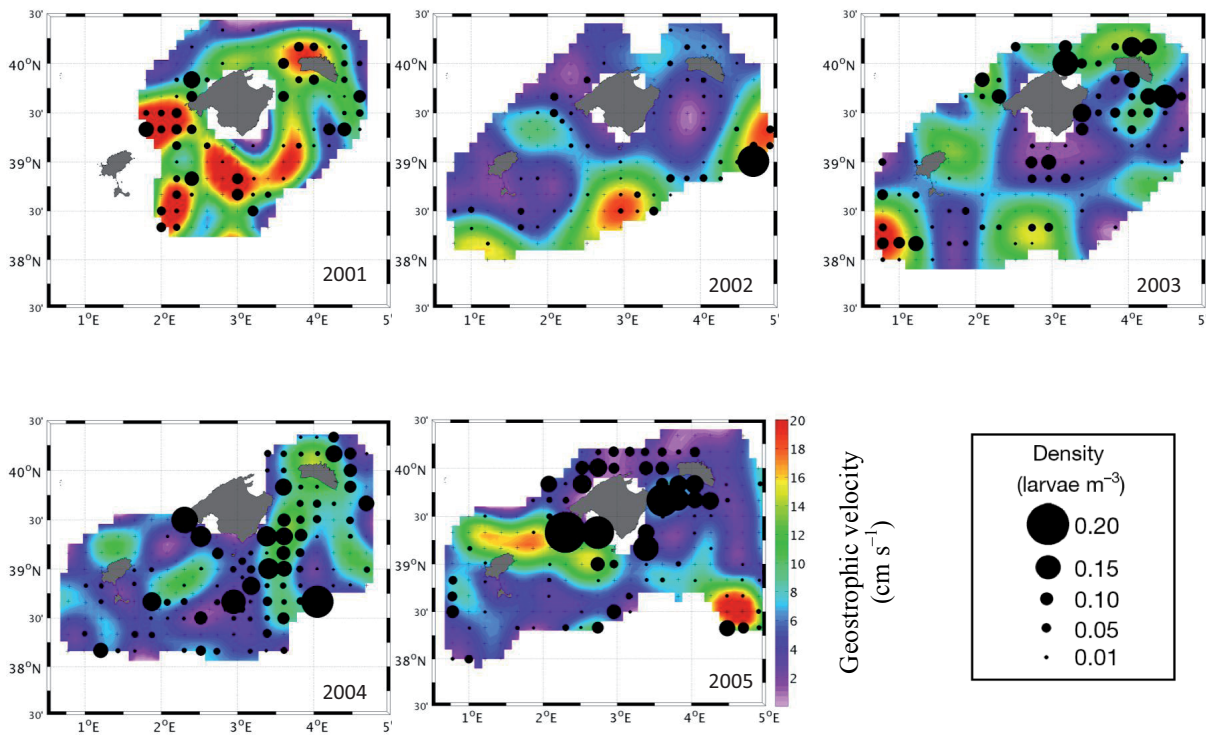


Fig. S6. *Auxis rochei*. Spatial distribution of bullet tuna in relation to geostrophic velocity