

The following supplement accompanies the article

Foray foraging behavior: seasonally variable, food-driven migratory behavior in two calanoid copepod species

James J. Pierson^{1,*}, Bruce W. Frost², Andrew W. Leising³

¹University of Maryland Center for Environmental Sciences (UMCES), Horn Point Laboratory, Cambridge, Maryland 21613, USA

²University of Washington, School of Oceanography, Seattle, Washington 98105, USA

³NOAA Southwest Fisheries Science Center, Environmental Research Division, Pacific Grove, California 93950, USA

*Email: jpierson@umces.edu

Marine Ecology Progress Series 475: 49–64

Supplement. The figures included in this supplement show the complete data sets for flux calculations, gut chl *a*, and gut fullness area, data which were not presented in the paper (Figs. S1 & S3) or summarized in the paper (Fig. S2 was summarized in Fig. 7).

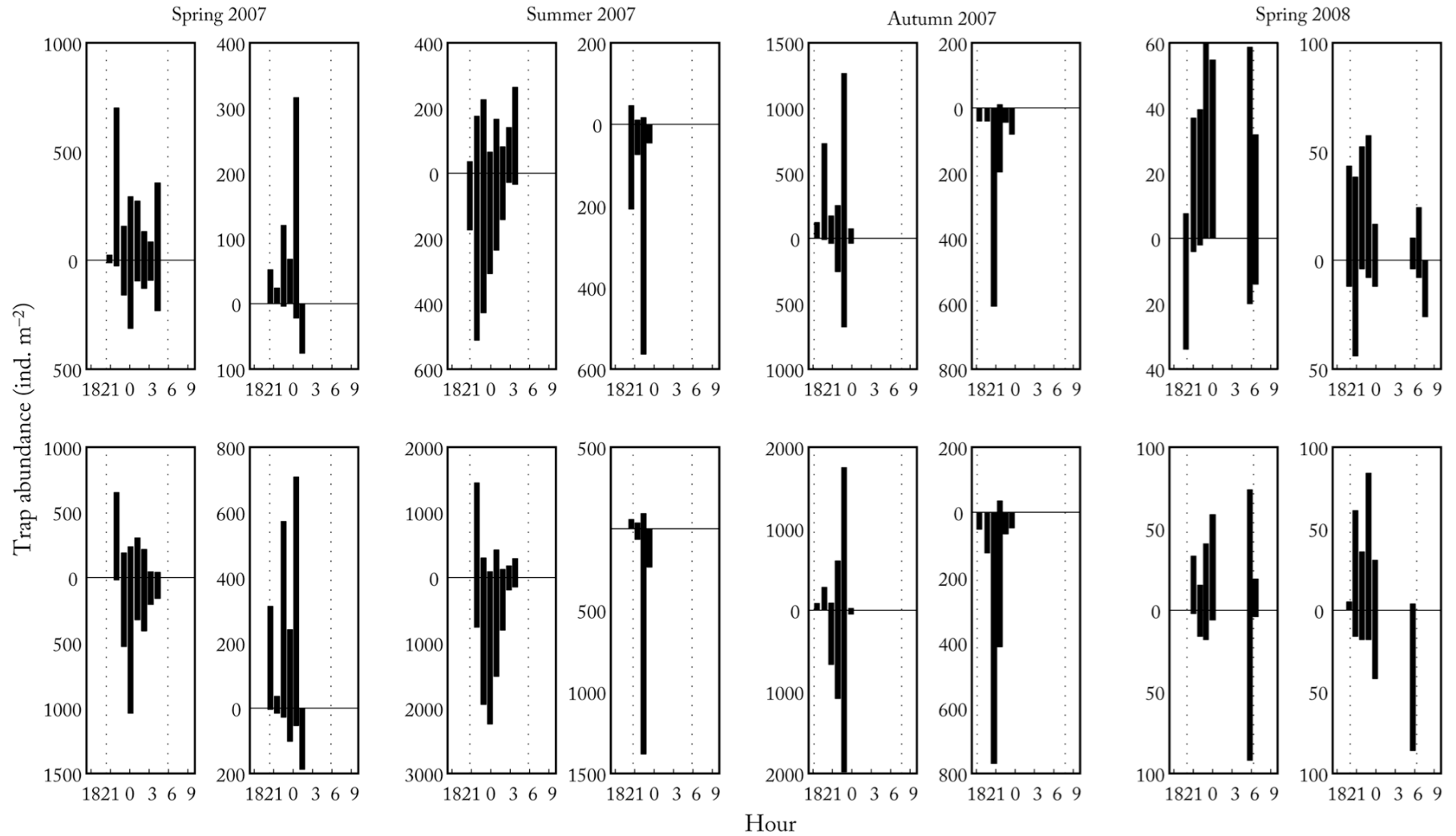


Fig. S1. *Calanus pacificus* and *Metridia pacificus*. Flux of individuals ($\text{m}^3 \text{h}^{-1}$) into (upward-facing bars) and out of (downward-facing bars) the surface layer during each trap deployment. Upper panels show data for *C. pacificus* females, lower panels show data for *M. pacificus* females. Data from 2 nights on each cruise are shown. Vertical dotted lines show sunset and sunrise times

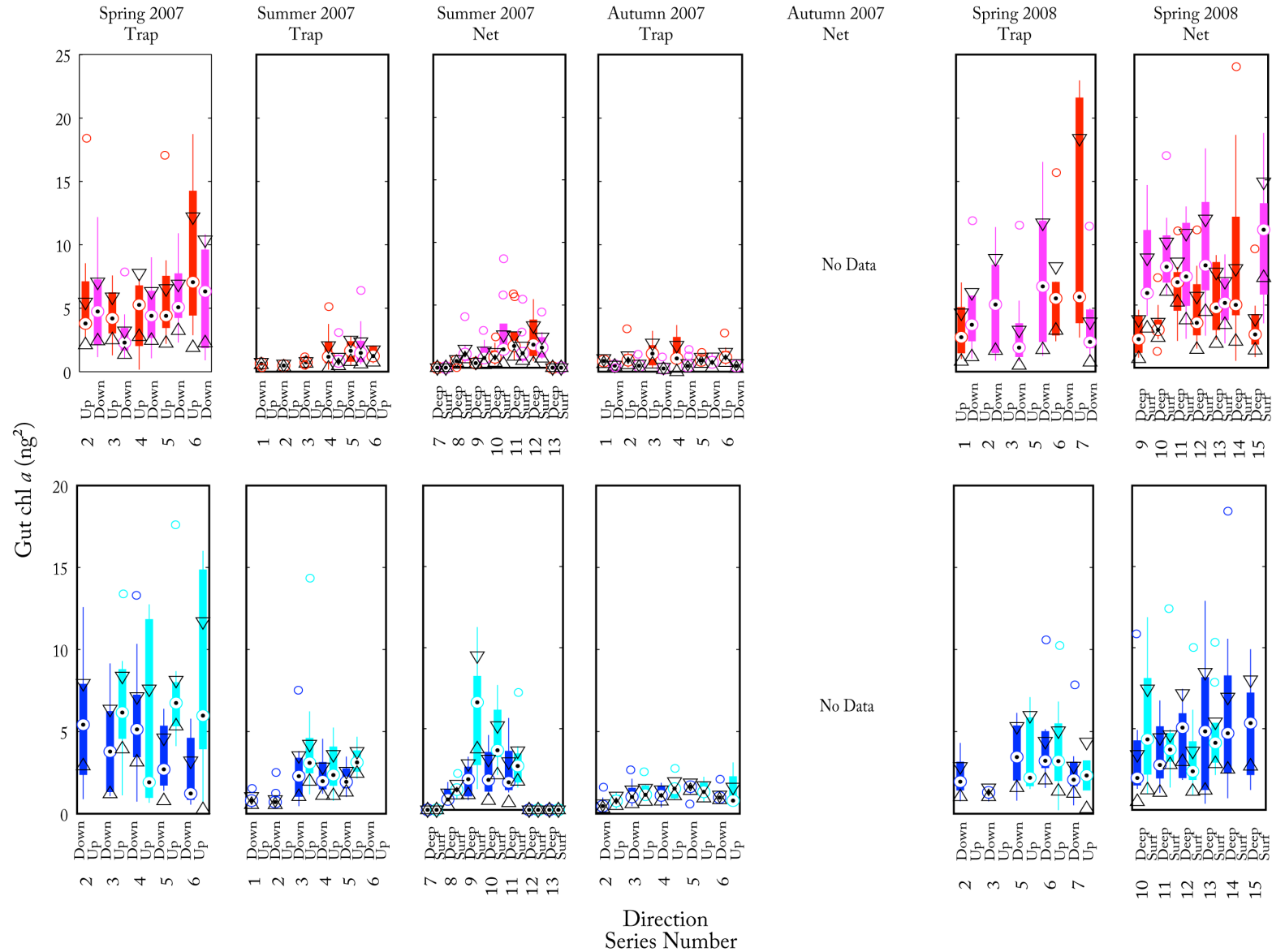


Fig. S2. *Calanus pacificus* and *Metridia pacifica*. Gut chlorophyll *a* contents of individual female *C. pacificus* (upper panels) and *M. pacifica* (lower panels) from trap series (Traps; Z-traps [magenta and dark blue bars, Down] and plummet nets [red and cyan bars, Up]) and net series (Nets; layer above traps [Surf] and layer below traps [Deep]). Boxes show interquartile range, circles and dots show median, triangles show the 95% confidence interval of the median, and whiskers show the range of data

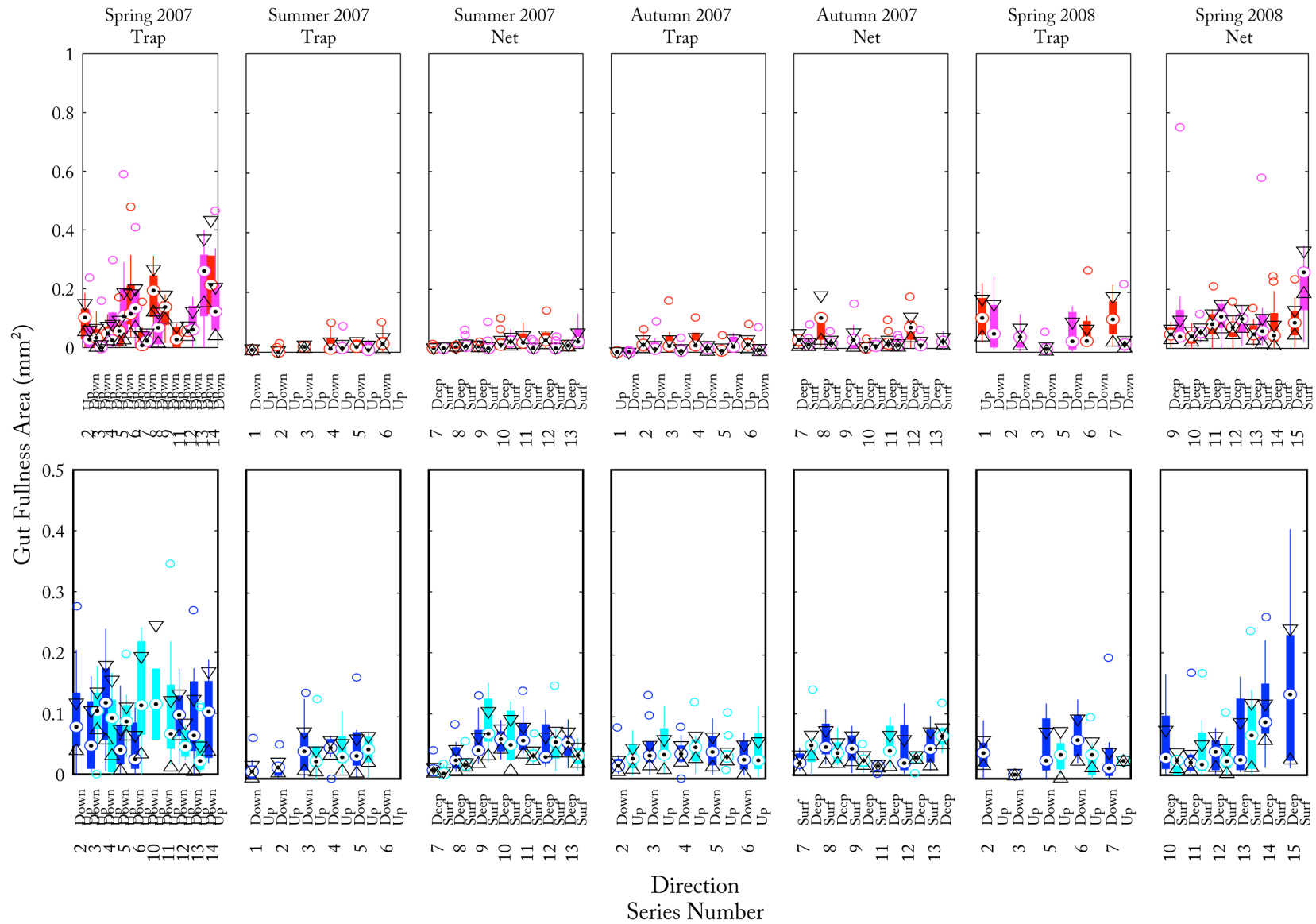


Fig. S3. *Calanus pacificus* and *Metridia pacifica*. Gut fullness area of individual female *C. pacificus* (upper panels) and *M. pacifica* (lower panels) from trap series (Traps; Z-traps [magenta and dark blue bars, Down] and plummet nets [red and cyan bars, Up]) and net series (Nets; layer above traps [Surf] and layer below traps [Deep]). Boxes show interquartile range, circles and dots show median, triangles show the 95% confidence interval of the median, and whiskers show the range of data