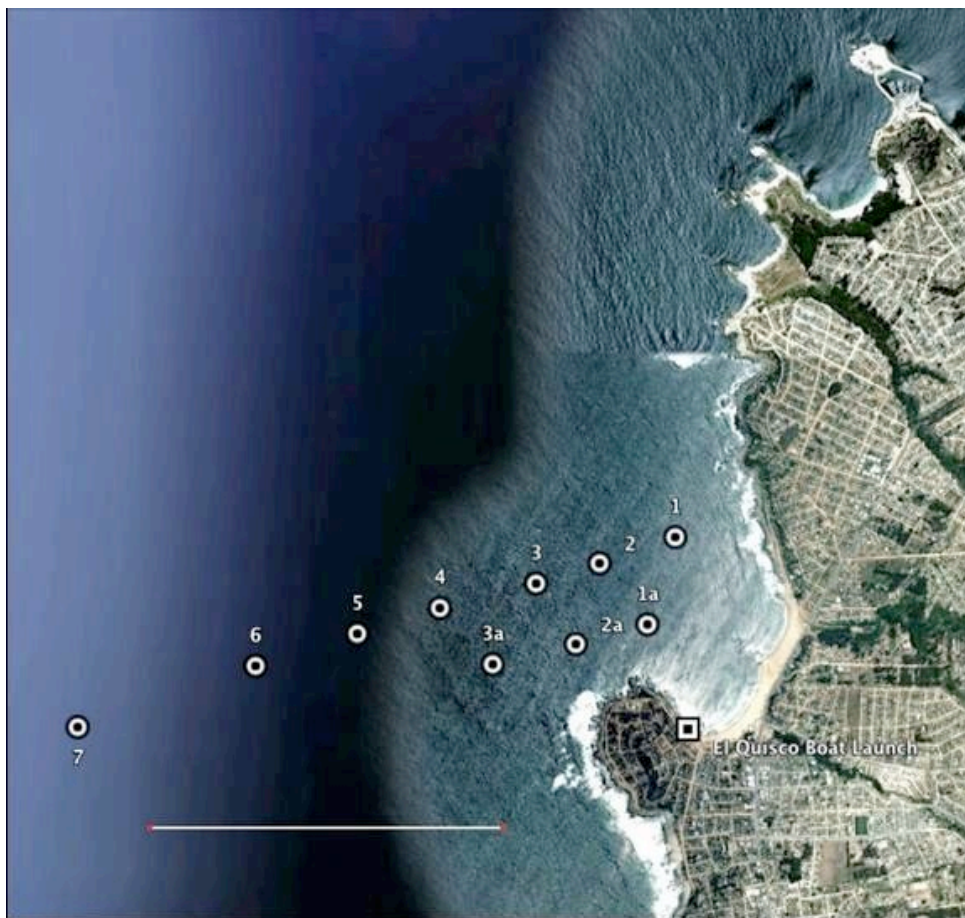


## **Tumbling under the surf: wave-modulated settlement of intertidal mussels and the continuous settlement-relocation model**

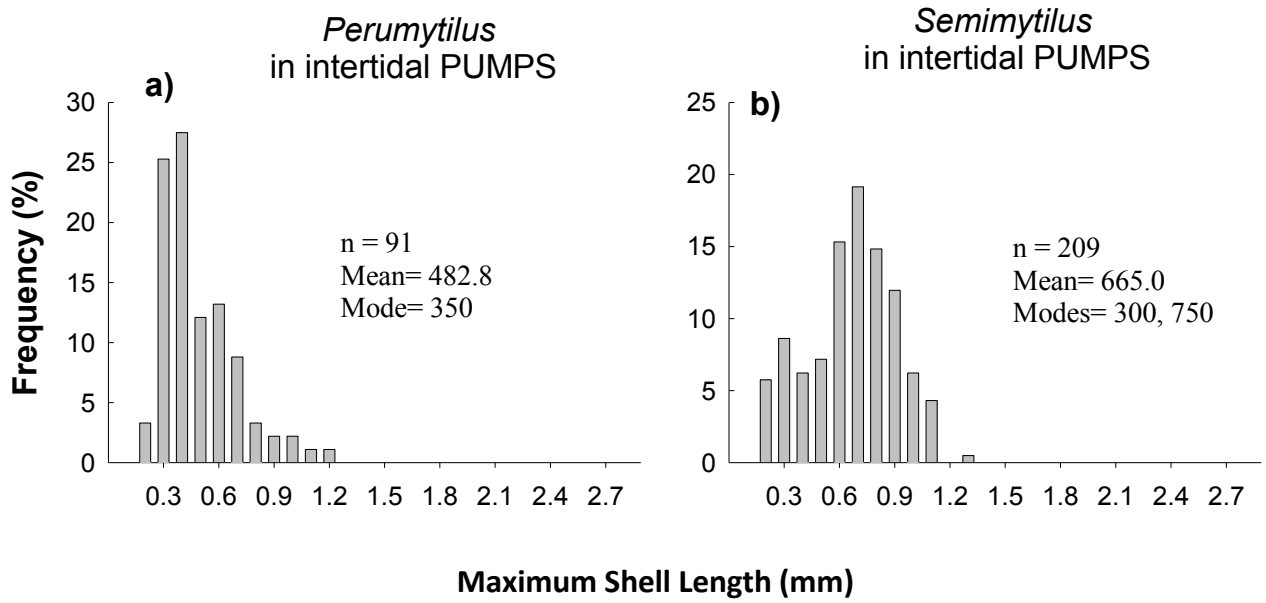
**S. A. Navarrete\*, J. L. Largier, G. Vera, F. J. Tapia, M. Parragué, E. Ramos, J. L. Shinen, C. A. Stuardo, E. A. Wieters**

\*Corresponding author: snavarrete@bio.puc.cl

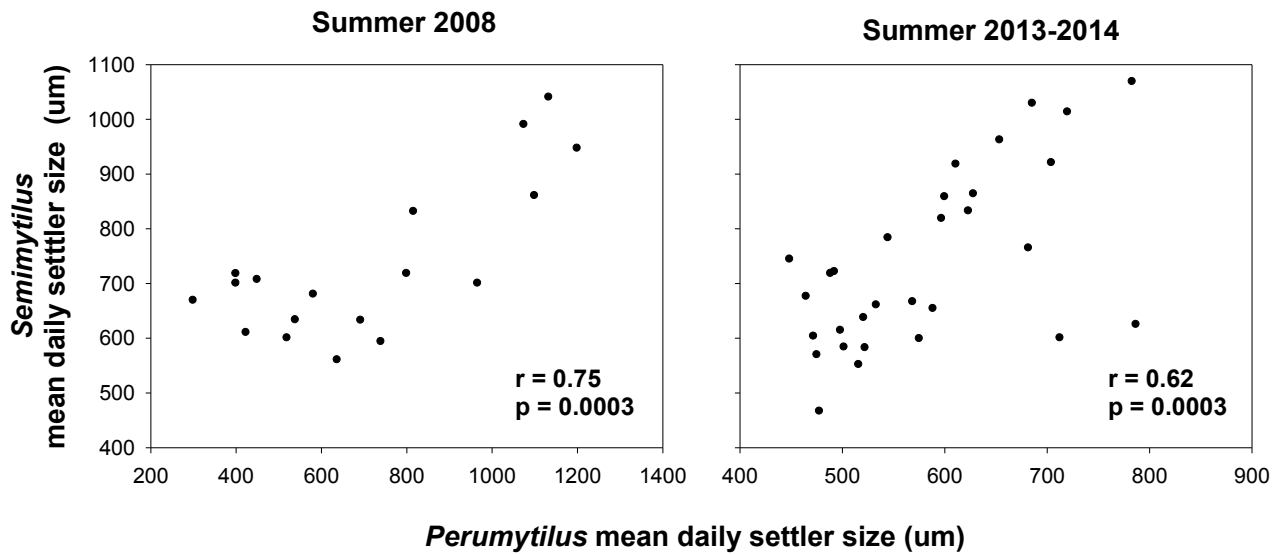
*Marine Ecology Progress Series 520: 101-121 (2015)*



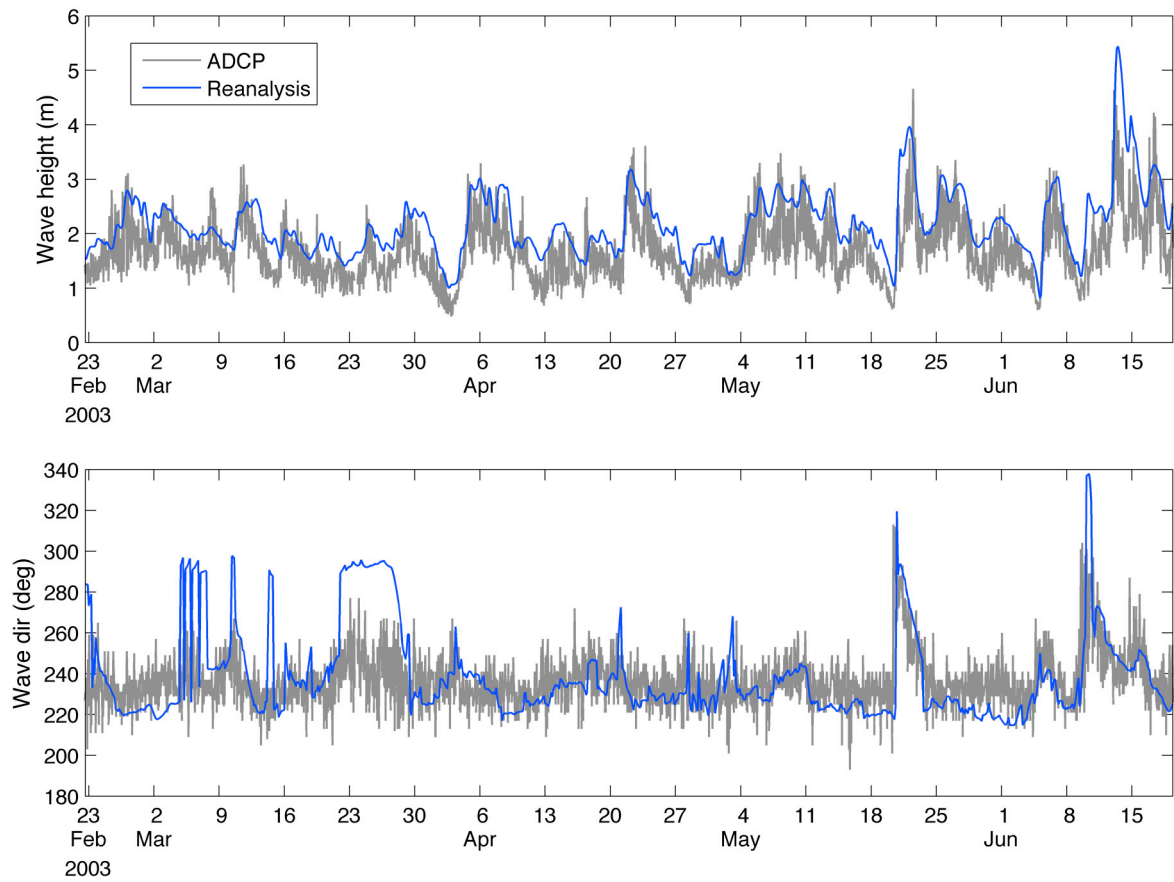
**Fig. S1.** Diagram of the sampling grid used for stratified plankton tows at El Quisco, central Chile.



**Fig. S2.** Size distribution (maximum shell length, mm) of plantigrade larvae collected in water pumped from the shore at Las Cruces in summer 2009.



**Fig. S3.** Mean size (maximum shell length,  $\mu\text{m}$ ) of mussel settlers of *Perumytilus purpuratus* and *Semimytilus algosus* observed in collectors replaced daily at Playa Chica, Las Cruces on two different summers.



**Fig. S4.** Comparisons of wave predictions (from reanalysis provided by Buoyweather Consulting Service, <http://www.buoyweather.com>, NOAA's WAVEWATCH III global wave model) and in situ measurements of significant wave height and wave direction obtained with an ADCP moored near the study site.