

## Kelp in hot water: II. Effects of warming seawater temperature on kelp quality as a food source and settlement substrate

E. J. Simonson\*, A. Metaxas, R. E. Scheibling

\*Corresponding author: erika.simonson@dal.ca

Marine Ecology Progress Series 537: 105–119 (2015)

### Supplement.

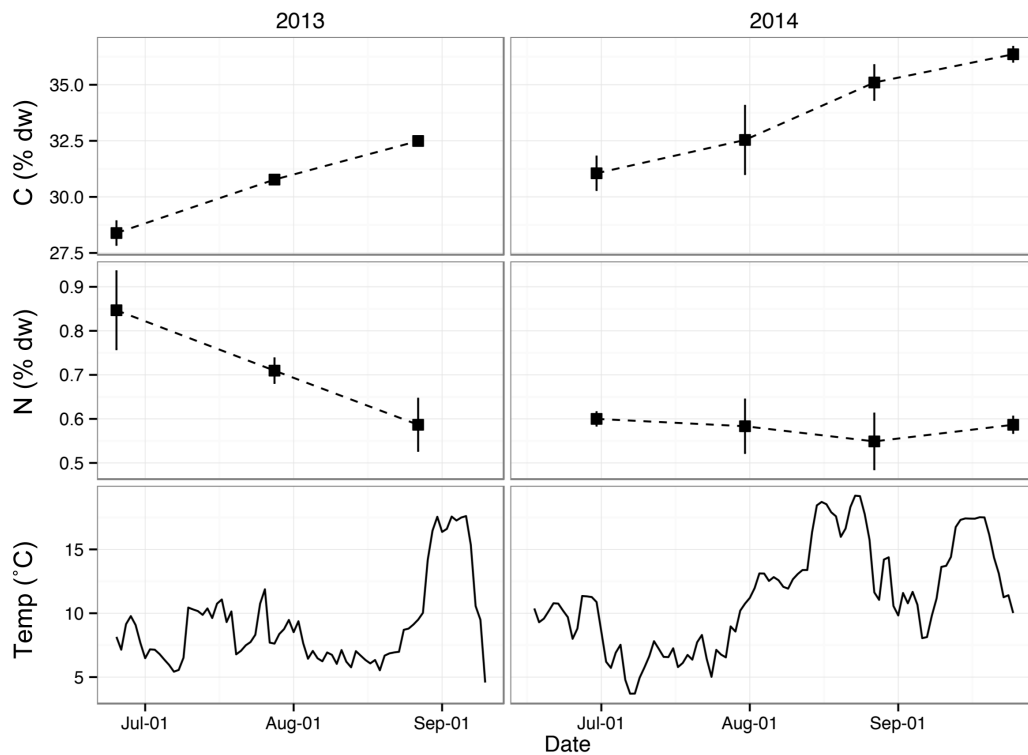


Fig. S1. Mean ( $\pm 1$  SE) C content (% dry wt;  $n = 3$ ) and N content (% dry wt;  $n = 3$ ) of blade tissue of *Saccharina latissima* collected monthly in summer 2013 and 2014 from 8-m depth at Splitnose Point (black squares), and mean daily temperature ( $^{\circ}$ C) at the collection site.