

Behavioral responses to seismic operations affects density analyses of bowhead whales

Frances C. Robertson*, William R. Koski, Andrew W. Trites

*Corresponding author: f.robertson@fisheries.ubc.ca

Marine Ecology Progress Series 549: 243–262 (2016)

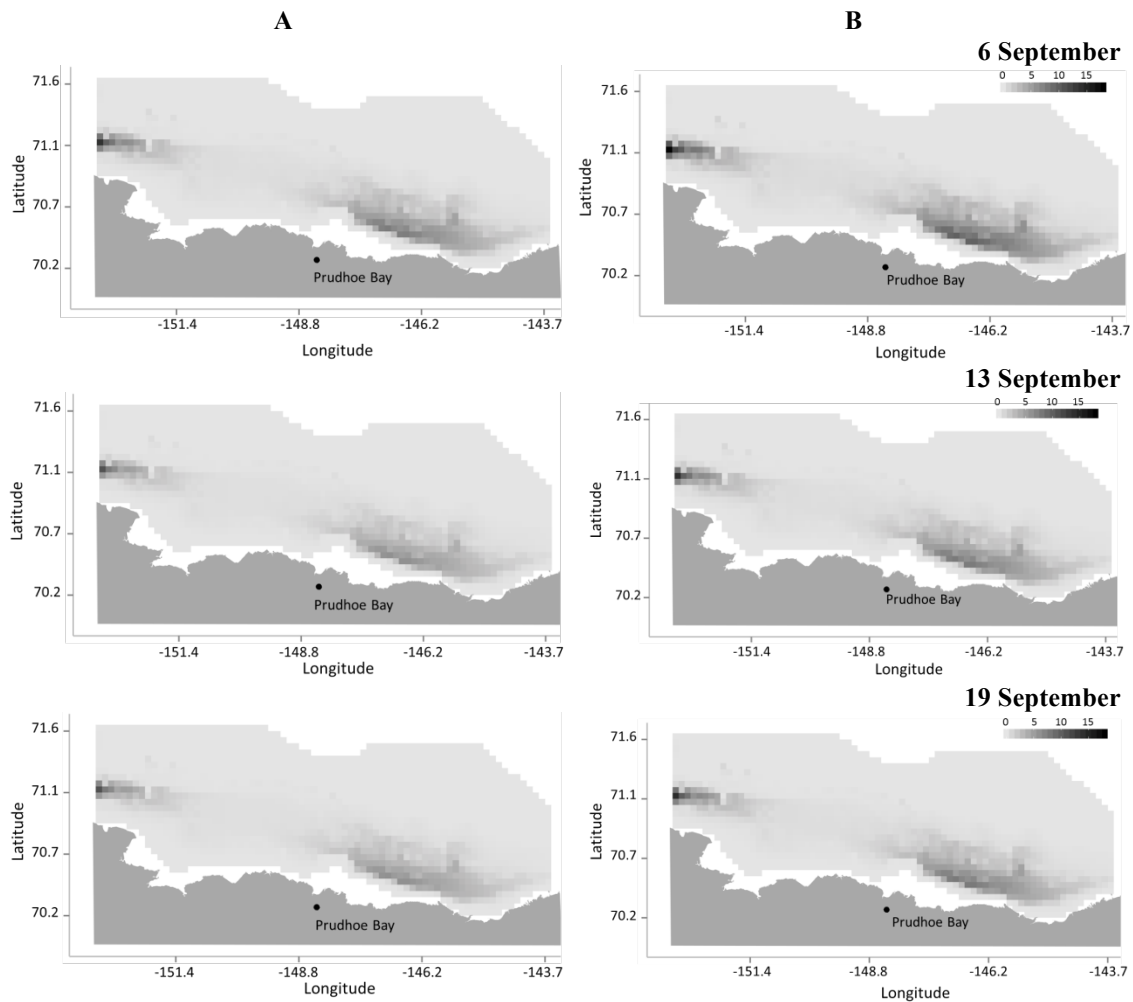


Figure S1. Predicted densities (number of whales/5 km² grid cell) for feeding non-calf bowhead whales in the southern Alaskan Beaufort Sea, during September 2008. Plots in column **A** have been corrected for the variable availability for undisturbed feeding bowhead whales, while plots in column **B** have been corrected for the variable availability for feeding non-calf whales exposed to seismic survey operations

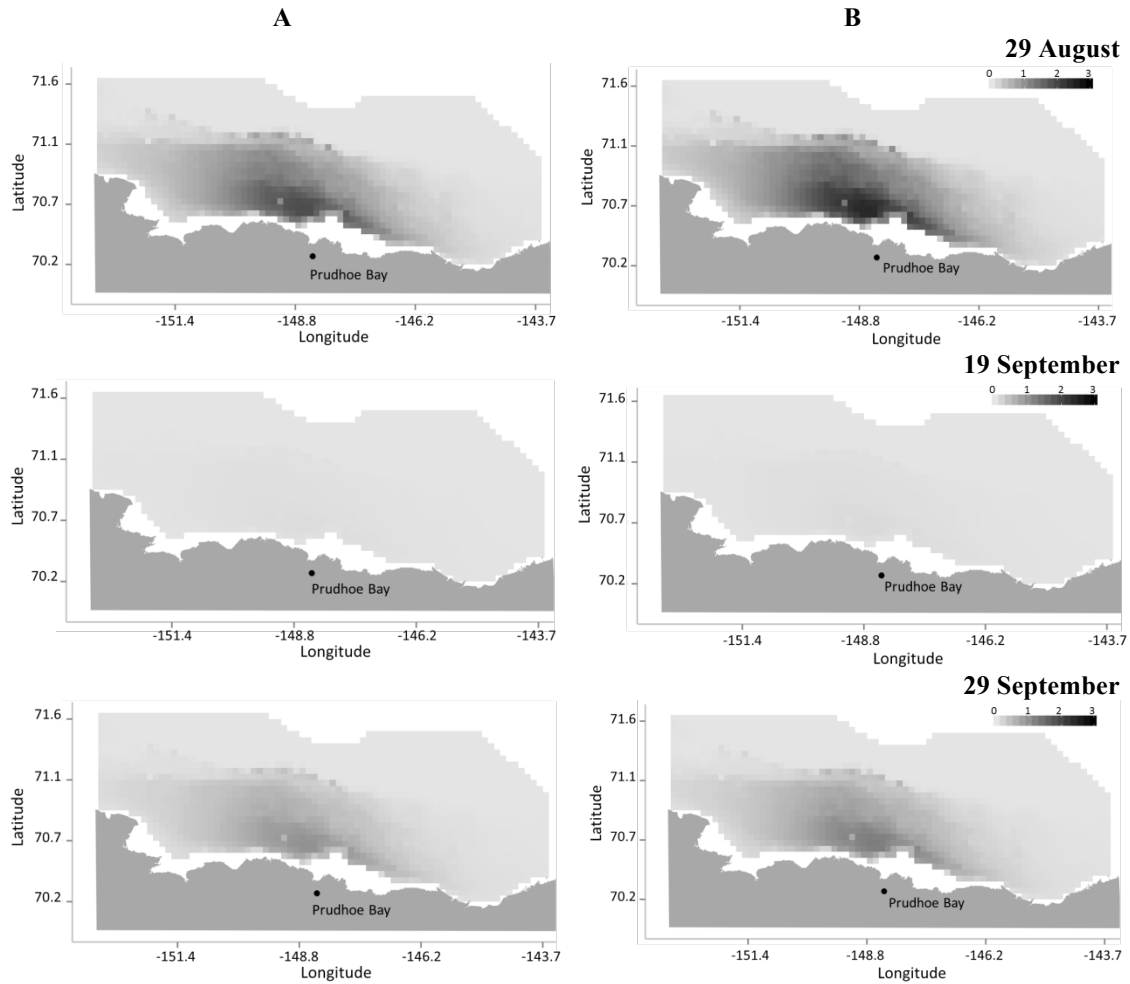


Figure S2. Predicted densities (number of whales/5 km² grid cell) for traveling non-calf bowhead whales in the southern Alaskan Beaufort Sea, during late August and September 2008. Plots in column **A** have been corrected for the variable availability for undisturbed traveling bowhead whales, while plots in column **B** have been corrected for the variable availability for traveling non-calf whales exposed to seismic survey operations