

The following supplement accompanies the article

Misidentification of megalopae as a potential source of error in studies of population genetics and ecology of the blue crab *Callinectes sapidus*

Timothy J. Sullivan*, Joseph E. Neigel

*Corresponding author: TSulli1988@gmail.com

Marine Ecology Progress Series 565: 95–111 (2017)

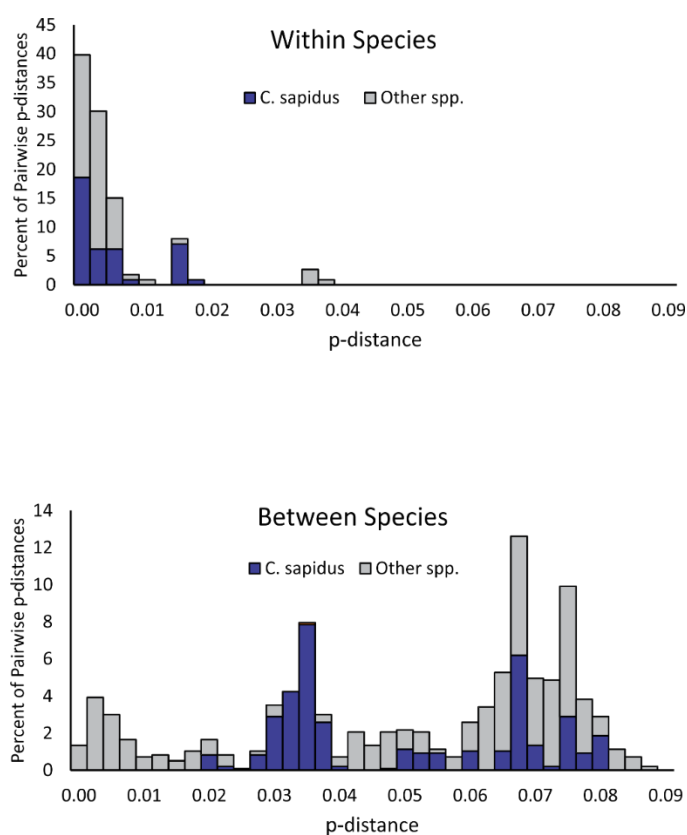


Figure S1. Distributions of pairwise p-distances for 16S reference sequences within and between American species of *Callinectes*, and p-distance for comparisons within *C. sapidus* and between *C. sapidus* and other American species of *Callinectes*. Distances were calculated from the trimmed 401 bp alignment that included sequences of megalopae.

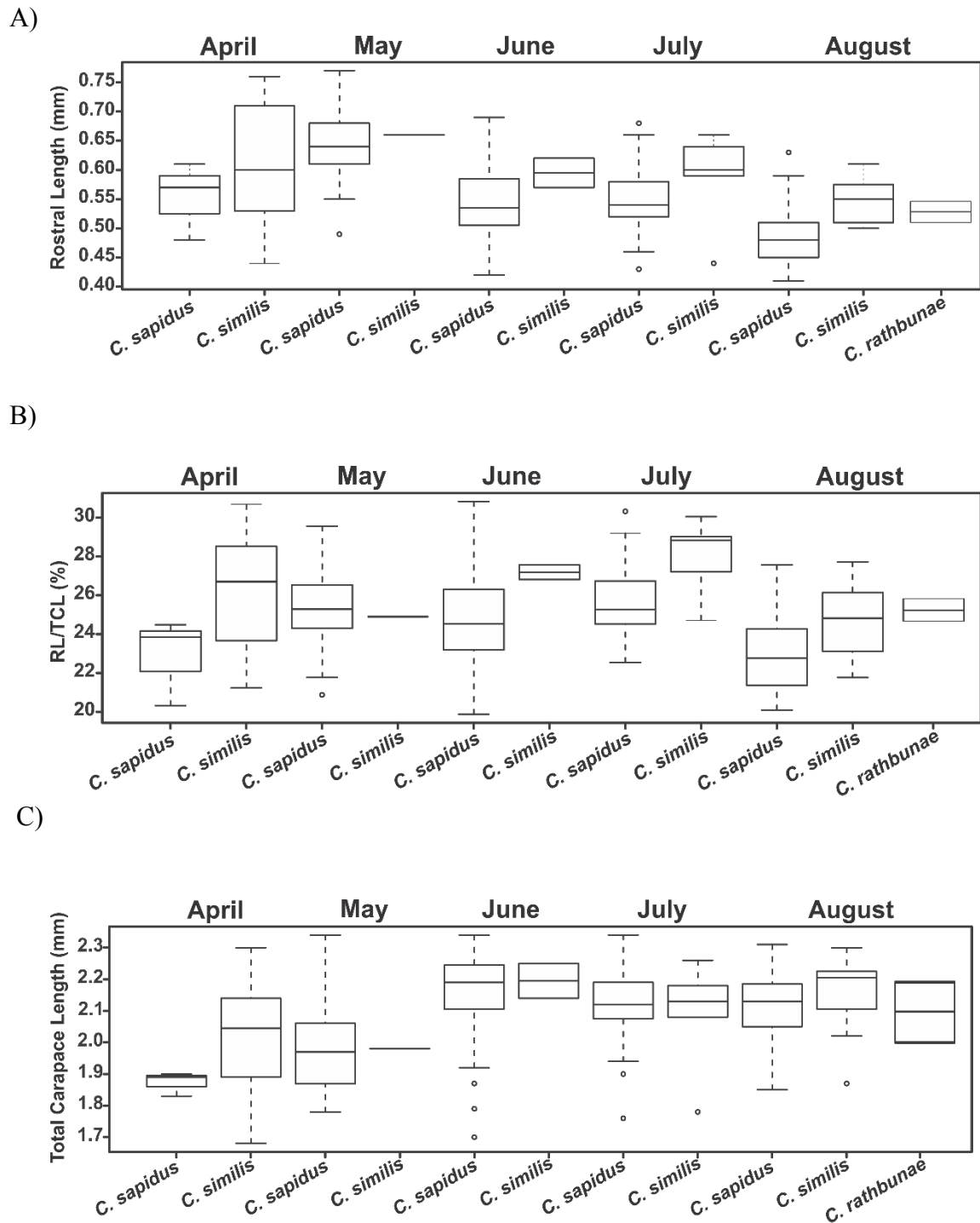


Figure S2. Box-and-whisker plots of A) rostrum length (mm), B) rostrum length / total carapace length as a percentage and C) total carapace length (mm) for megalopae collected April, May, June, July, and August 2015 and identified as *C. rathbunae*, *C. sapidus* and *C. similis* by 16S sequences.

Table S1. Table of haplotypes used to create Figure 3 including the haplotype identifier (Haplotype), the Taxa, and the Genbank Accession numbers for sequences that matched each haplotype.

Haplotype	Taxa	GenBank Accession
H01	<i>Charybdis hellerii</i>	AJ298191, DQ407665, DQ407666
H02	<i>Callinectes bellicosus</i>	DQ407670
H03	<i>Callinectes exasperatus</i>	DQ407682
H04	<i>Callinectes bellicosus</i>	DQ407671
H05	<i>Callinectes arcuatus</i>	DQ407669
H06	<i>Callinectes similis, megalopae</i>	DQ407672
H07	<i>Callinectes maracaiboensis</i>	AJ298183
H08	<i>Arenaeus cribrarius</i>	DQ407667
H09	<i>Callinectes ornatus</i>	AJ298187
H10	<i>Callinectes danae, megalopae</i>	AJ298184, DQ407680
H11	<i>Callinectes similis</i>	U75269
H12	<i>Callinectes ornatus</i>	U75268
H13	<i>Callinectes bocourti, C. maracaiboensis</i>	AJ298170, AJ298171, AJ298172, AJ298173, AJ298174, AJ298176
H14	<i>Callinectes danae</i>	AJ298185, JX123474, JX123475
H15	<i>Callinectes sapidus, megalopae</i>	AJ130813, AJ298189, JX123476, KR030244, KR030245, KR030247, KR030248
H16	<i>Callinectes sapidus</i>	AJ298190
H17	<i>Callinectes sapidus</i>	JX123477
H18	<i>Callinectes bocourti</i>	AJ298175
H19	<i>Callinectes arcuatus</i>	DQ407668
H20	<i>Callinectes ornatus</i>	AJ298186, AJ298188, DQ407679
H21	<i>Callinectes toxotes</i>	DQ407681
H22	<i>Callinectes sapidus</i>	KR030246
H23	<i>Callinectes affinis</i>	DQ407675, DQ407676, DQ407677
H24	<i>Callinectes maracaiboensis</i>	AJ298182
H25	<i>Callinectes rathbunae, megalopae</i>	DQ407673
H26	<i>Callinectes bocourti</i>	AJ298181
H27	<i>Callinectes bocourti, C. maracaiboensis</i>	AJ298177, AJ298179, AJ298180, DQ407674
H28	<i>Callinectes larvatus</i>	DQ407678
H29	megalopae	KY381584
H30	megalopae	KY381582
H31	megalopae	KY381583
H32	megalopae	KY381586
H33	megalopae	KY381585
H34	megalopae	KY381587