

## Growth and competition in a warmer ocean: a field experiment with a non-native and two native habitat-building seaweeds

Caroline S. Armitage\*, Vivian Husa, Elzbieta A. Petelenz-Kurdziel, Kjersti Sjøtun

\*Corresponding author: caroline.s.armitage@gmail.com

Marine Ecology Progress Series 573: 85–99 (2017)

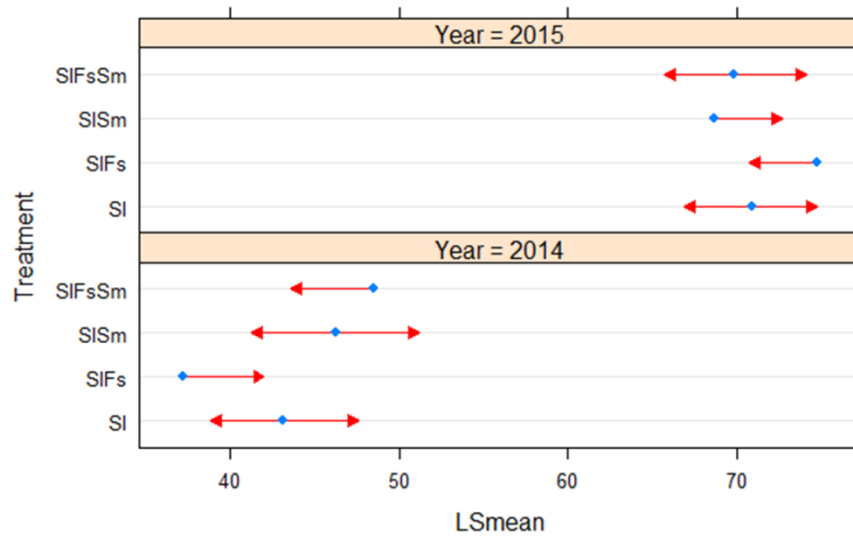


Figure S1. Least-squares means of *Saccharina latissima* end length with comparison arrows (Lenth 2016), by treatment and year, based on a starting length of 40.3 cm. “SI” = *Saccharina latissima*, “Fs” = *Fucus serratus*, “Sm” = *Sargassum muticum*.

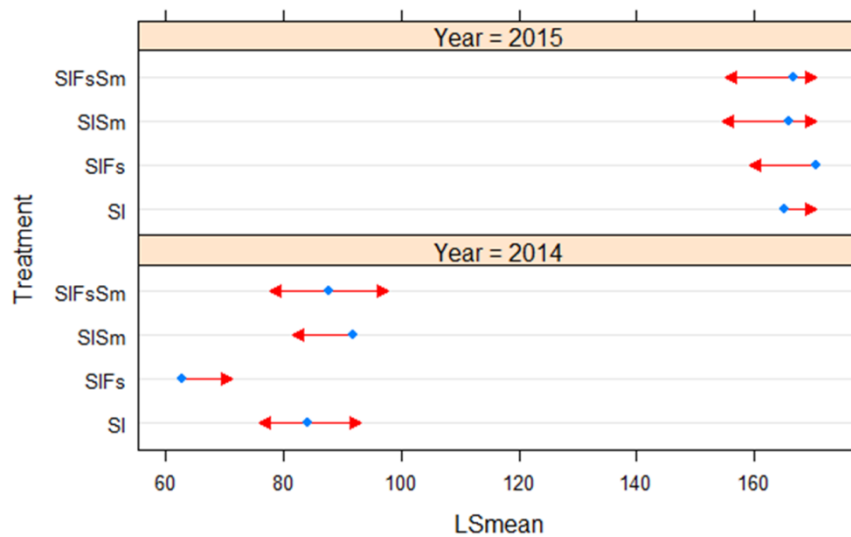


Figure S2. Least-squares means of *Saccharina latissima* end weight with comparison arrows, by treatment and year, based on a starting weight of 84.1 g. Codes and arrows as in Figure S1.

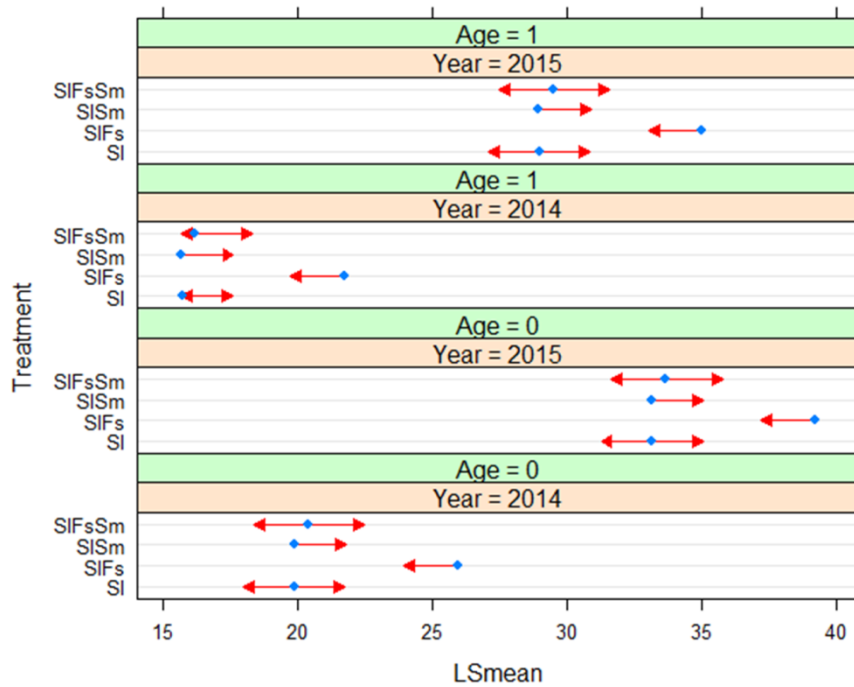


Figure S3. Least-squares means of *Saccharina latissima* growth with comparison arrows by treatment, year and age, based on a starting weight of 90.7 g. Codes and arrows as in Figure S1.

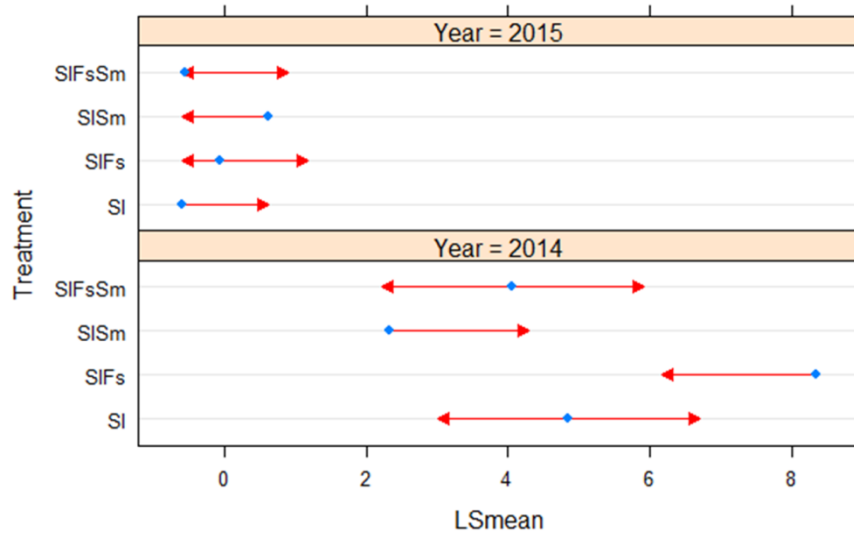


Figure S4. Least-squares means of *Saccharina latissima* erosion with comparison arrows by treatment and year, based on a starting weight of 90.7 g. Codes and arrows as in Figure S1.

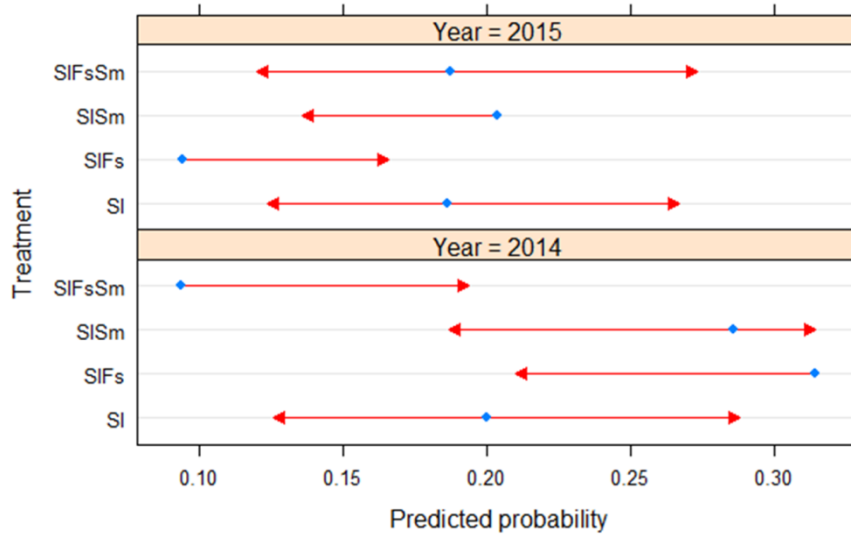


Figure S5. Least-squares means showing the predicted probability of *Saccharina latissima* death/loss with comparison arrows, by treatment and year. Codes and arrows as in Figure S1.

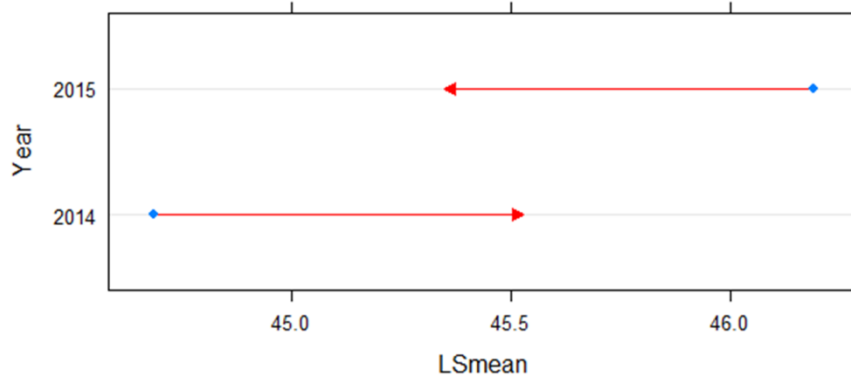


Figure S6. Least-squares means of *Fucus serratus* end length, with comparison arrows, by year, based on a starting length of 40.7 cm. Arrows as in Figure S1.

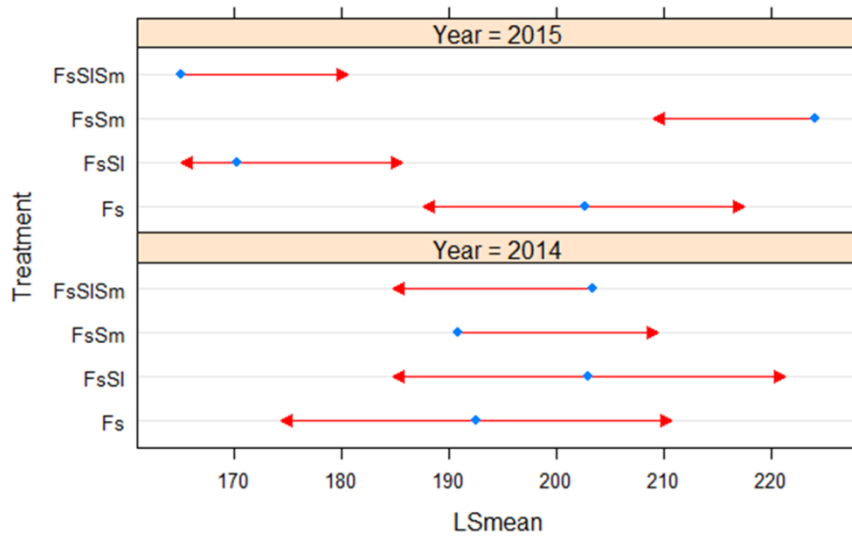


Figure S7. Least-squares means of *Fucus serratus* end weight with comparison arrows, by treatment and year, based on a starting weight of 112.5 g. Codes and arrows as in Figure S1.

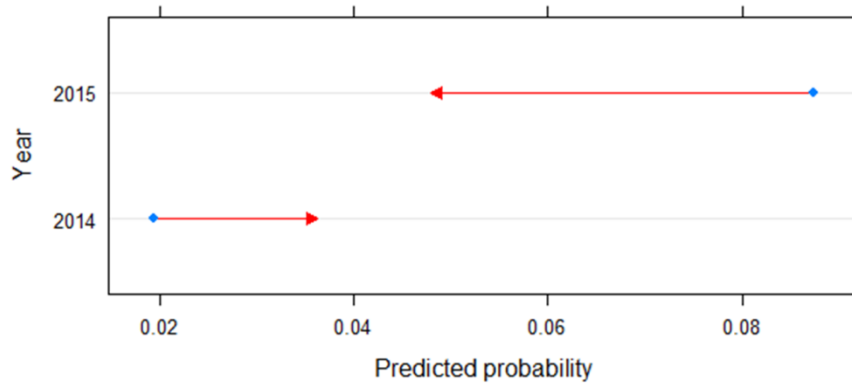


Figure S8. Least-squares means showing the predicted probability of *Fucus serratus* death/loss with comparison arrows, by year. Arrows as in Figure S1.

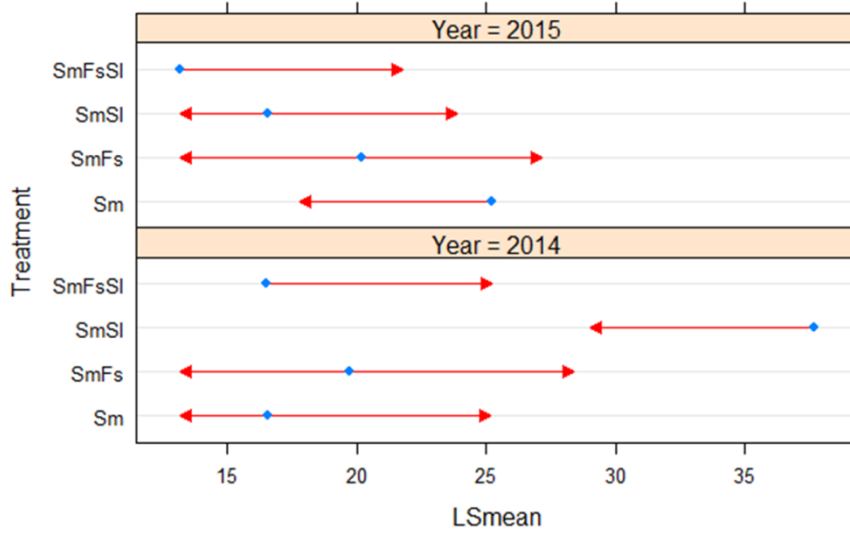


Figure S9. Least-squares means of *Sargassum muticum* end weight with comparison arrows, by treatment and year, based on a starting weight of 18.7 g. Codes and arrows as in Figure S1.

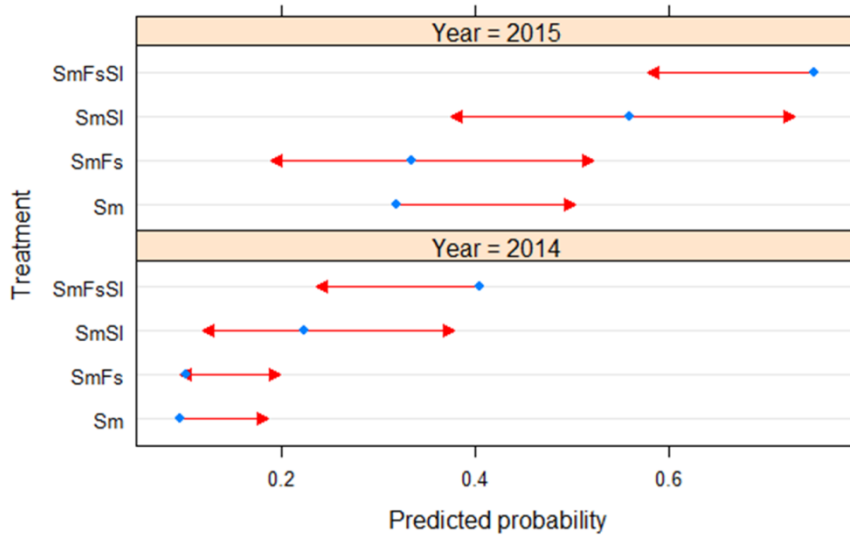


Figure S10. Least-squares means showing the predicted probability of *Sargassum muticum* death/loss with comparison arrows by treatment and year, based on a starting weight of 19.0 g. Codes and arrows as in Figure S1.