

Experimental assessment of the effects of cold-water coral patches on water flow

F. Mienis*, T. J. Bouma, R. Witbaard, D. van Oevelen, G. C. A. Duineveld

*Corresponding author: furtu.mienis@nioz.nl

Marine Ecology Progress Series 609: 101–117 (2019)

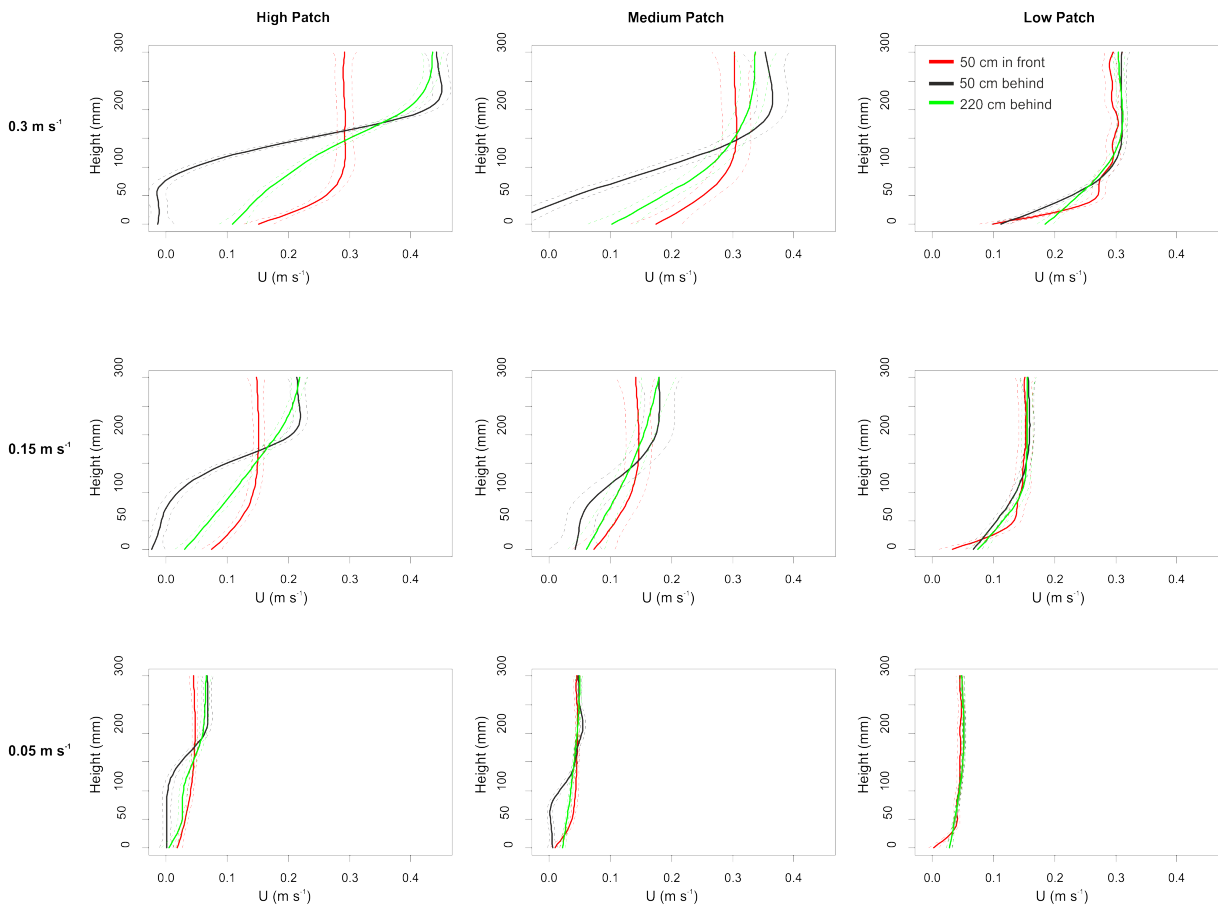
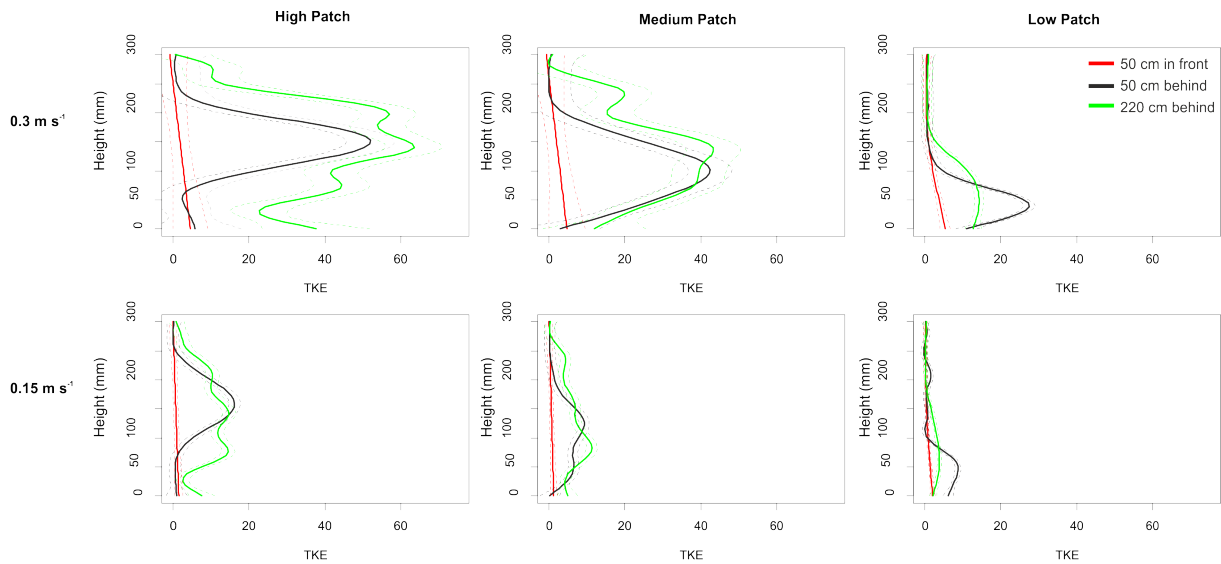


Figure S1: GAM models fitted through velocity data over the measured depth in order to test whether velocity profiles measured in front and behind the patch differed significantly among each other. Penalized smoother functions are fitted through the velocity profiles describing the change in current speed over depth. Note that measurements immediately above the patch were excluded, due to absence of data in a large part of the profile.



Supplementary material Fig. 2

Figure S2: GAM models fitted through the TKE data over the measured depth in order to test whether TKE profiles measured in front and behind the patch differed significantly among each other. Penalized smoother functions are fitted through the TKE profiles describing the change in TKE over depth. Note that measurements immediately above the patch were excluded, as well as other measurements that showed absence of data in a large part of the profile.