

Fig. S1. Predicted video SumCounts of six reef-associated fish species in chevron traps as a function of the current direction relative to the camera and trap mouth, based on sampling from the Southeast Reef Fish Survey, 2015–2018. Points are the mean predicted video SumCount values, and dashed lines are 95% confidence intervals.

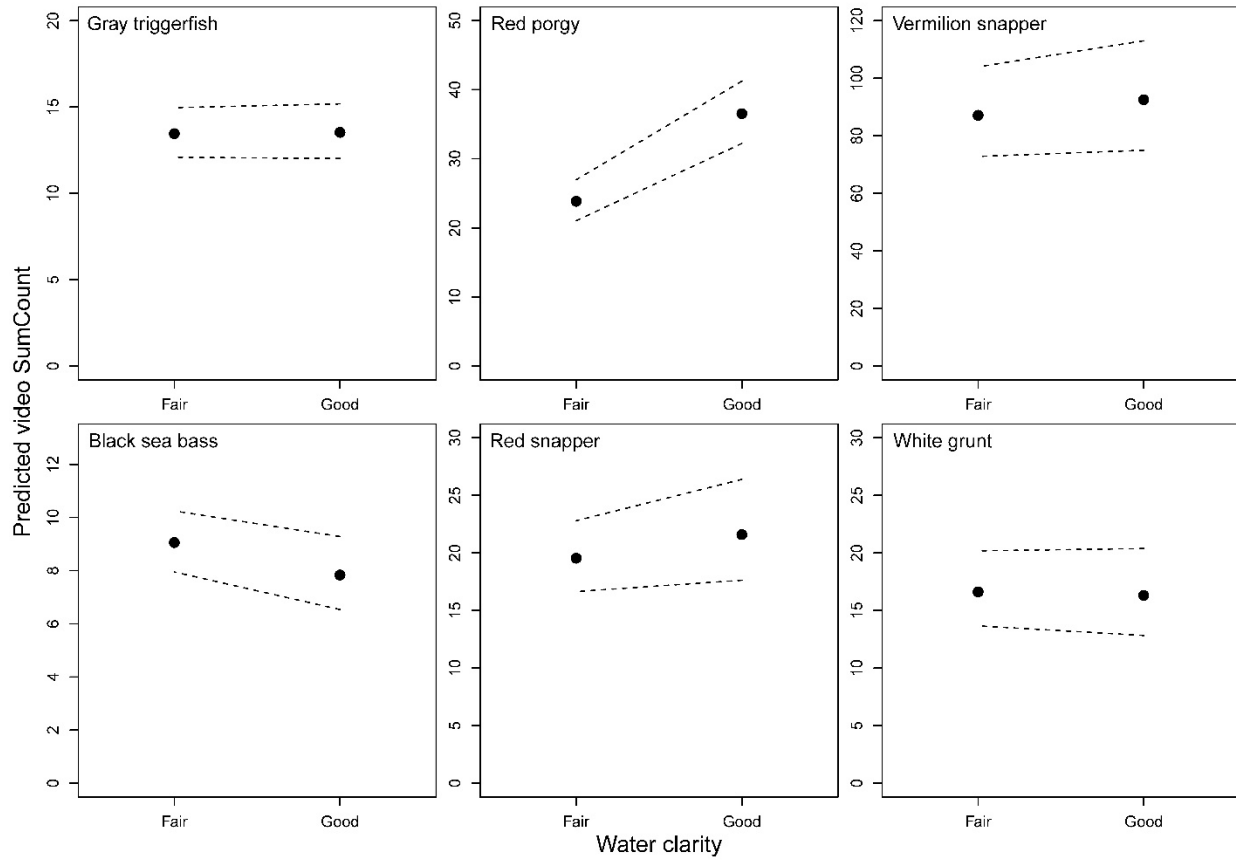


Fig. S2. Predicted video SumCounts of six reef-associated fish species in chevron traps as a function of the water clarity based on sampling from the Southeast Reef Fish Survey, 2015–2018. Points are the mean predicted video SumCounts, and dashed lines are 95% confidence intervals.

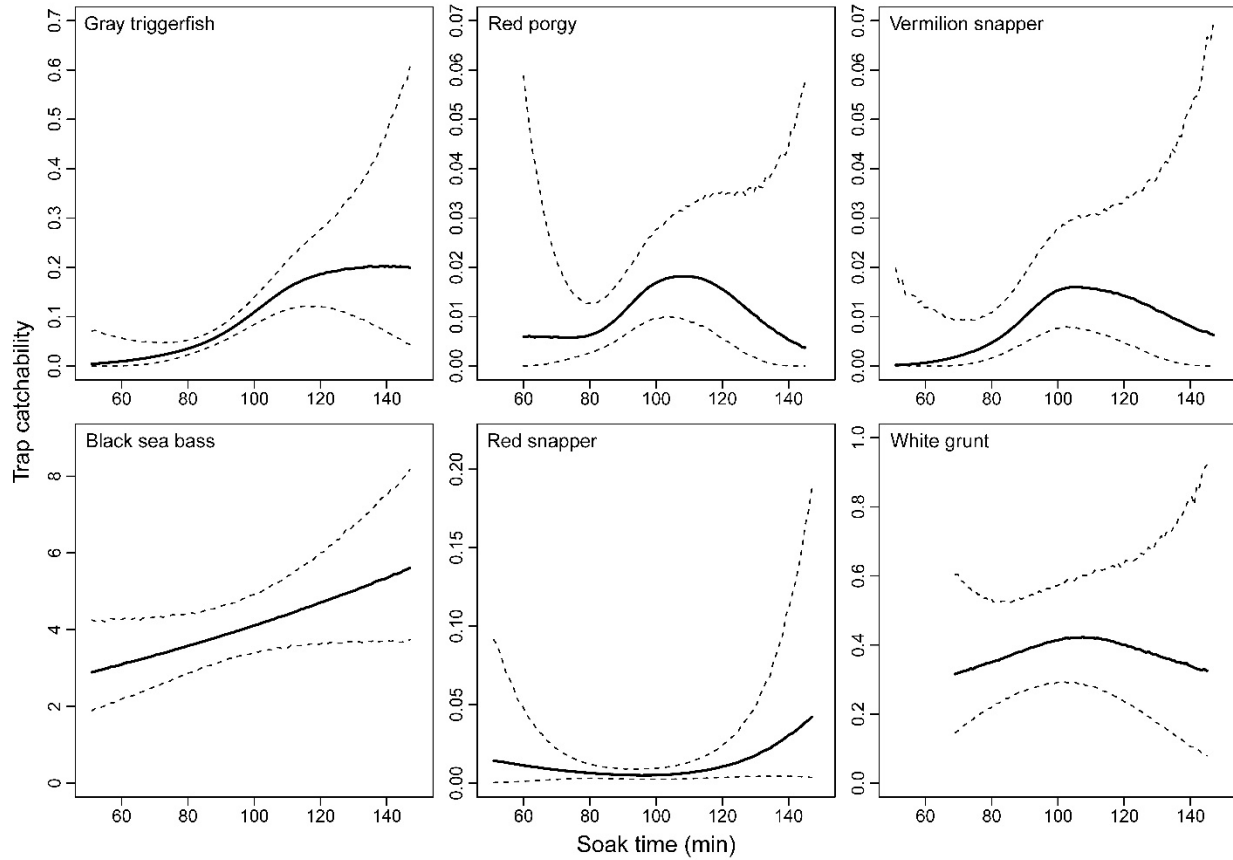


Fig. S3. Catchability of six reef-associated fish species in chevron traps as a function of the soak time (min) based on sampling from the Southeast Reef Fish Survey, 2015–2018. Solid lines are the predicted trap catchabilities, and dashed lines are 95% confidence intervals.

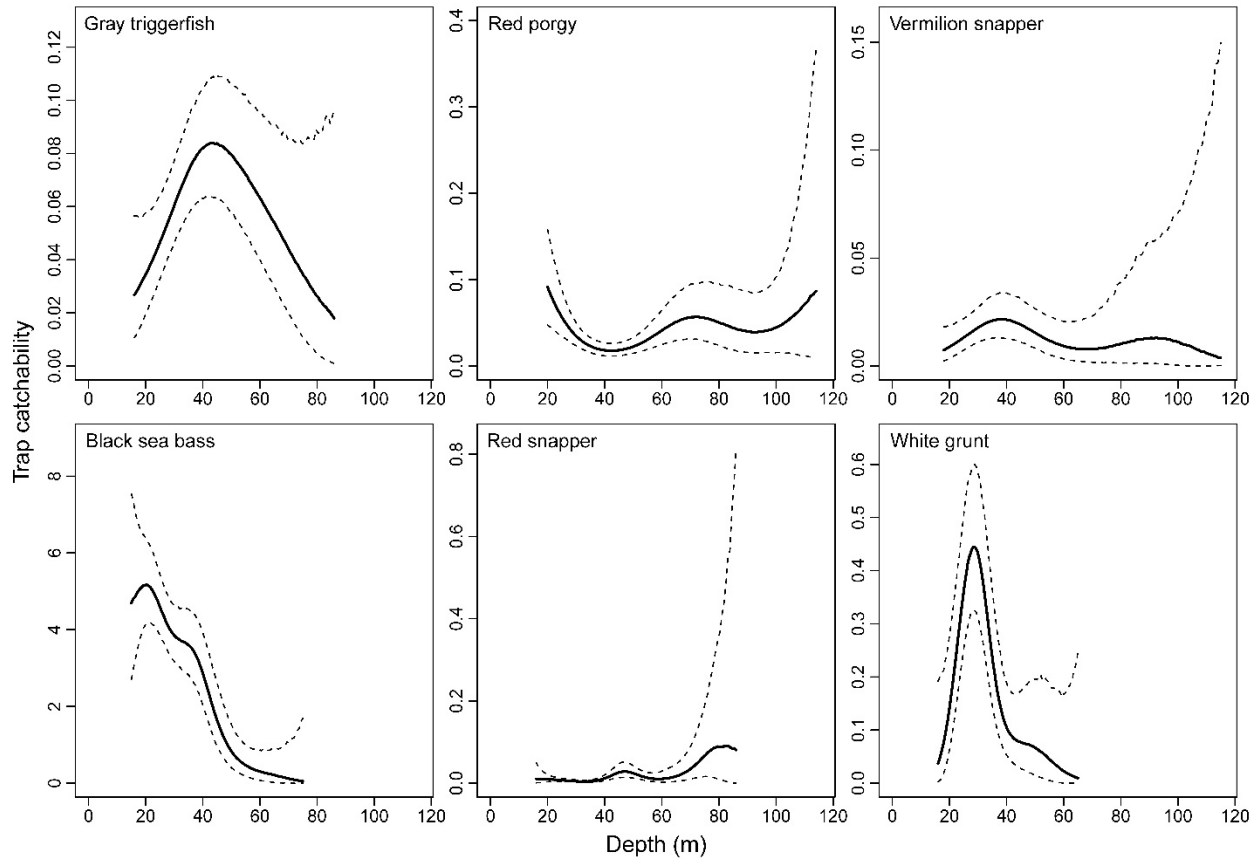


Fig. S4. Catchability of six reef-associated fish species in chevron traps as a function of bottom depth (m) based on sampling from the Southeast Reef Fish Survey, 2015–2018. Solid lines are the predicted trap catchabilities, and dashed lines are 95% confidence intervals.