

Supplemental Material

Table S1. T-test results comparing ED and TE between successive seasons for 2018 year class sablefish.

Period	t value	Degrees of freedom	p-value
ED			
Sep-Oct	-5.61	49.64	8.94E-07
Oct-Mar	2.80	50.20	0.0072
Mar-Jul	2.88	47.86	0.0059
TE			
Sep-Oct	-5.75	46.53	6.66E-07
Oct-Mar	-3.47	47.74	0.0011
Mar-Jul	-2.12	65.00	0.0376

Table S2. Parameter estimates for top ranked ED and TE models for the full dataset. TE and Length are natural log transformed in the TE model.

Parameter	ED coefficient	TE coefficient
(Intercept)	18.848	-8.571
Length	0.006	2.535
Month8	-0.803	-3.280
Month9	-1.381	-2.697
Month10	-2.799	-4.670
Month15	-13.904	-15.127
Month19	-5.527	-6.589
Month22	-3.482	-5.424
Yearclass2017	1.217	0.203
Yearclass2018	-0.390	0.0516
Length:month8	0.019	0.844
Length:month9	0.013	0.679
Length:month10	0.022	1.024
Length:month15	0.054	2.830
Length:month19	0.018	1.285
Length:month22	0.014	1.129
Month8:Yearclass2017	-1.158	-0.294
Month9:Yearclass2017	NA	NA
Month10:Yearclass2017	-0.914	0.113
Month15:Yearclass2017	NA	NA
Month19:Yearclass2017	NA	NA
Month22:Yearclass2017	NA	NA
Month8:Yearclass2018	NA	NA
Month9:Yearclass2018	NA	NA
Month10:Yearclass2018	NA	NA
Month15:Yearclass2018	NA	NA
Month19:Yearclass2018	NA	NA
Month22:Yearclass2018	NA	NA

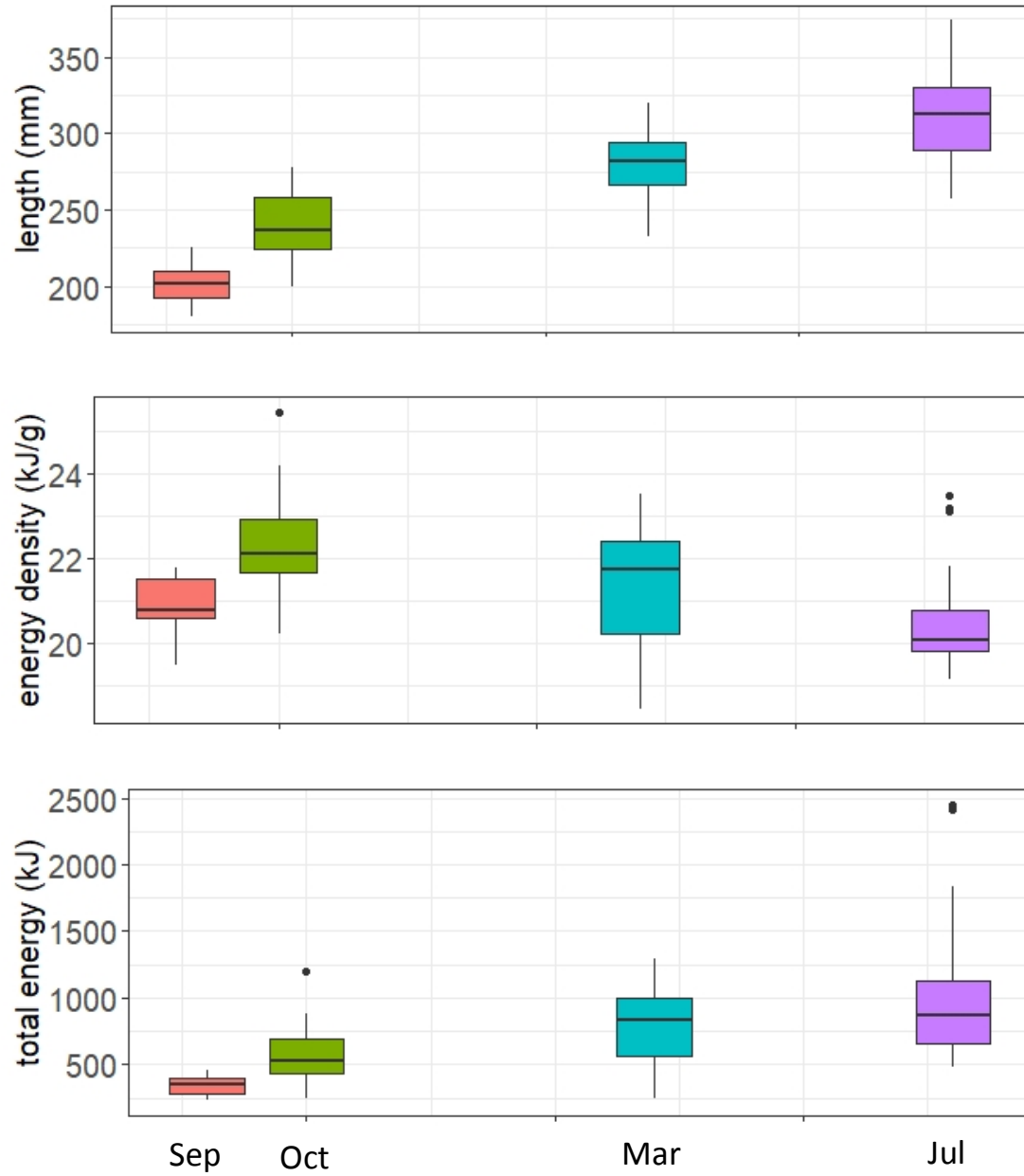


Figure S1. Seasonal changes in length, ED, and TE for the 2018 year class. Boxplots show the interquartile range (IQR; box), median (line), 1.5*IQR (whiskers), and outliers (points). From left to right, months sampled are September, October, March, and July.

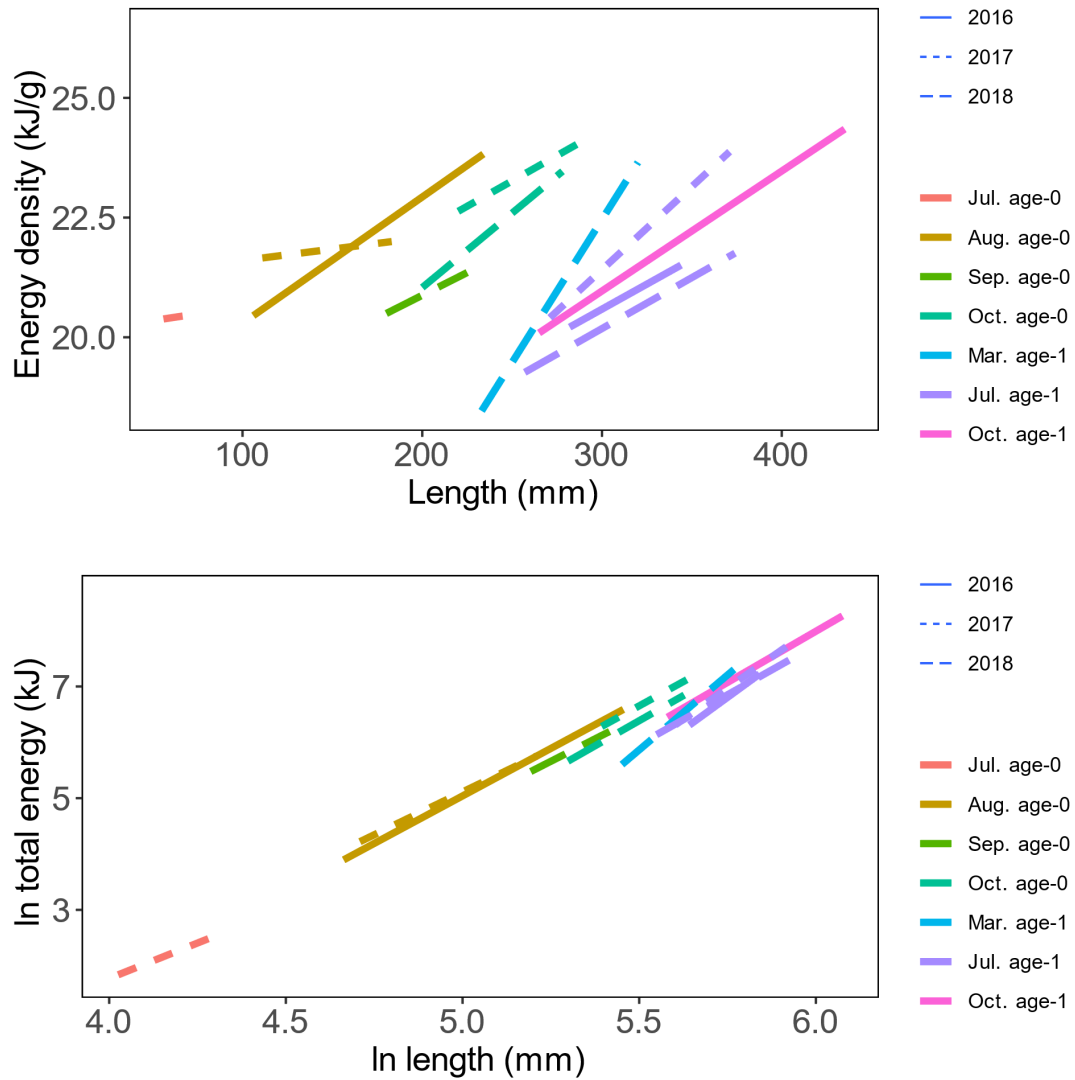


Figure S2. Seasonal changes in energy density with length (top) and log transformed total energy with log-transformed length (bottom) for the full dataset.

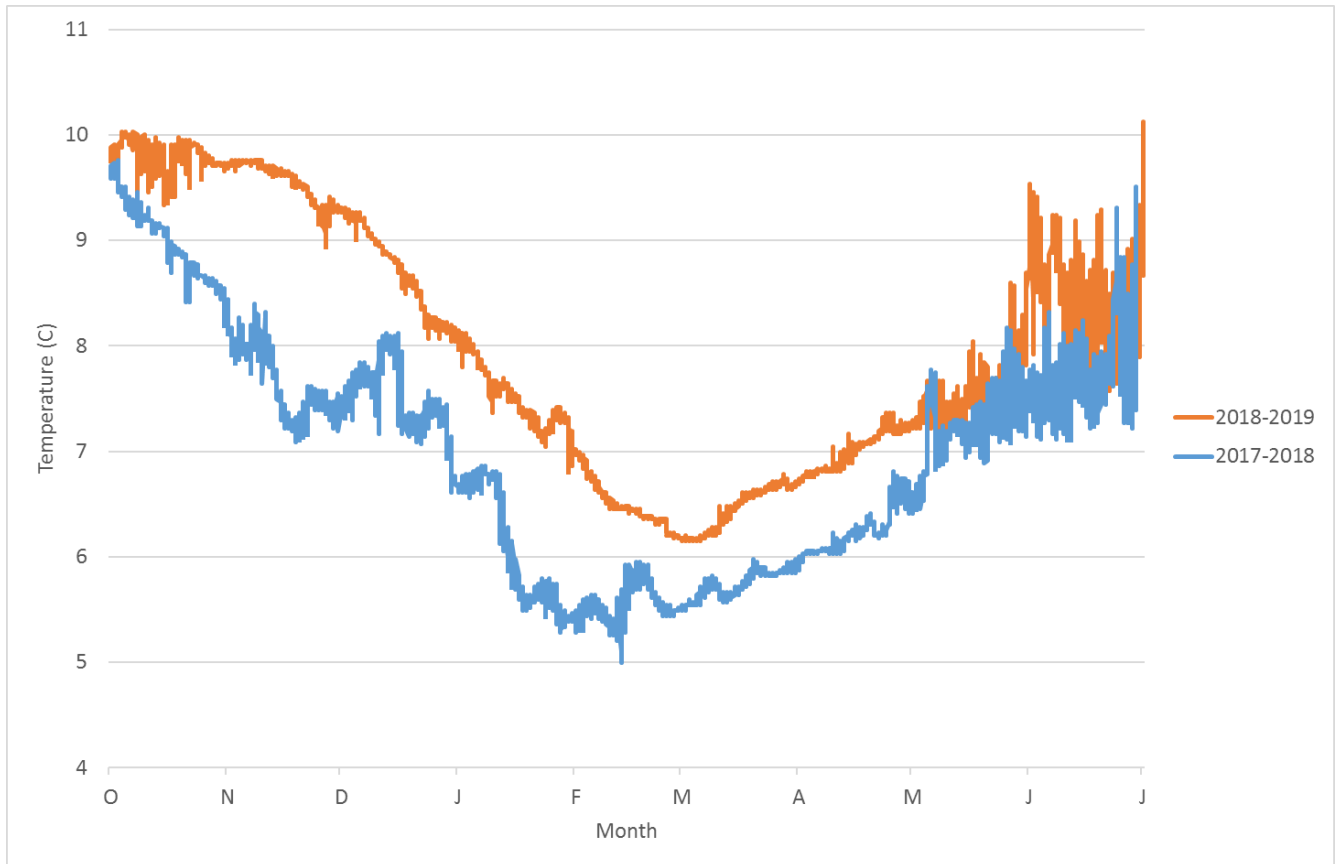


Figure S3. Bottom temperatures in St. John Baptist Bay from October to July in 2017-2018 (blue) and 2018-2019 (orange).