

Supplement 1

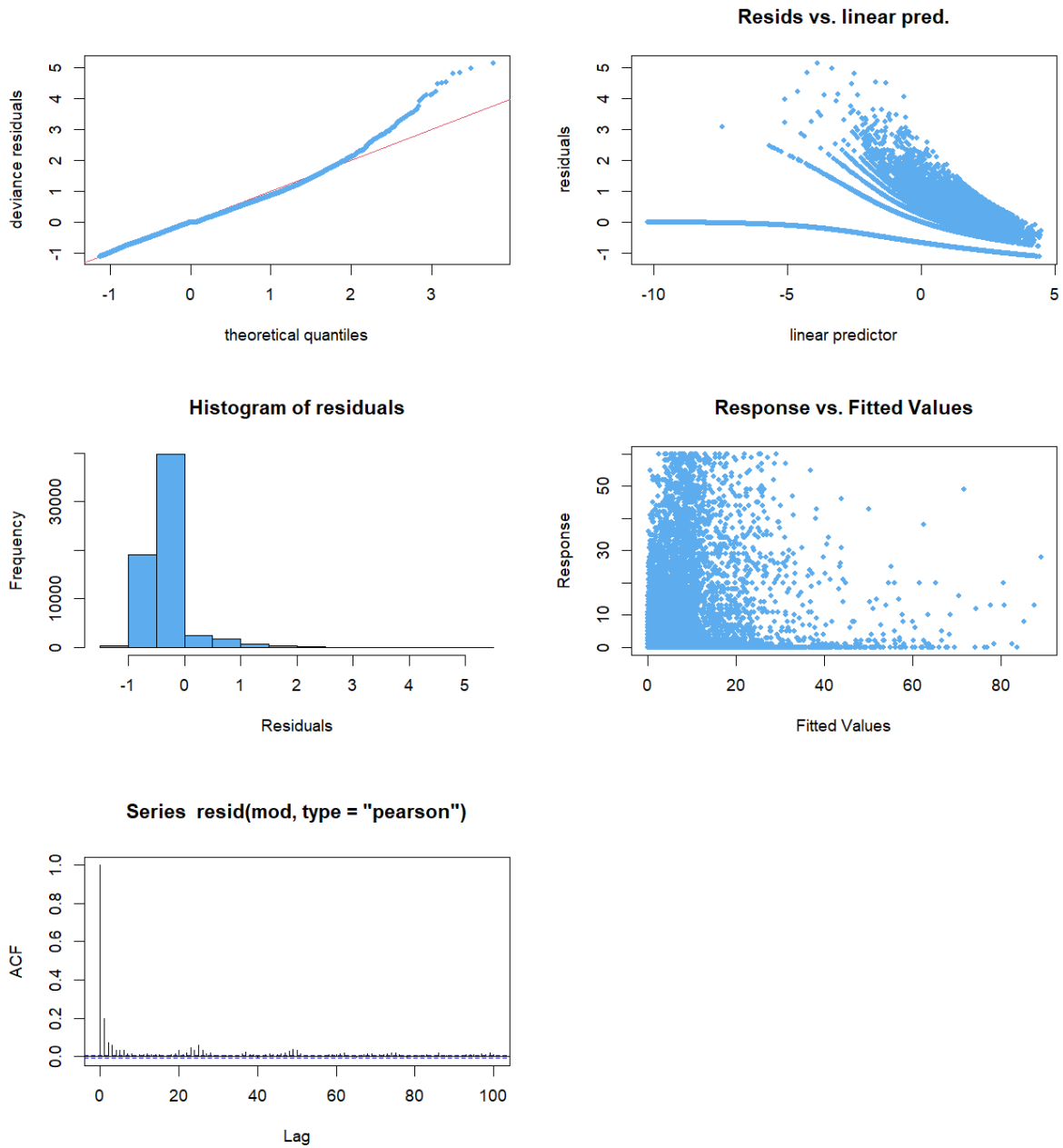


Figure S1. Diagnostic plots for the final model of habitat use of franciscana dolphins in Babitonga Bay.

Table S2. Coefficients for smooth terms for the interaction between eastings (x), northings (y) and 24 levels of hour of day as a factor in the final model of habitat use of franciscana dolphins in Babitonga Bay. edf = effective degrees of freedom, significance level at 0.05 highlighted in bold.

Smooth terms	edf	p-value (<i>F</i> -statistic)
<i>s</i> (y, x) – Hour of day 1	15.399	0.002
<i>s</i> (y, x) – Hour of day 2	14.826	0.015
<i>s</i> (y, x) – Hour of day 3	9.548	0.035
<i>s</i> (y, x) – Hour of day 4	18.351	0.002
<i>s</i> (y, x) – Hour of day 5	8.325	0.053
<i>s</i> (y, x) – Hour of day 6	14.545	<0.001
<i>s</i> (y, x) – Hour of day 7	13.102	0.008
<i>s</i> (y, x) – Hour of day 8	2.000	0.060
<i>s</i> (y, x) – Hour of day 9	2.001	0.085
<i>s</i> (y, x) – Hour of day 10	2.001	0.011
<i>s</i> (y, x) – Hour of day 11	17.015	<0.001
<i>s</i> (y, x) – Hour of day 12	2.000	0.010
<i>s</i> (y, x) – Hour of day 13	2.000	0.065
<i>s</i> (y, x) – Hour of day 14	16.314	0.003
<i>s</i> (y, x) – Hour of day 15	2.002	0.068
<i>s</i> (y, x) – Hour of day 16	17.340	<0.001
<i>s</i> (y, x) – Hour of day 17	2.002	0.050
<i>s</i> (y, x) – Hour of day 18	2.001	0.107
<i>s</i> (y, x) – Hour of day 19	16.523	0.002
<i>s</i> (y, x) – Hour of day 20	12.259	0.006
<i>s</i> (y, x) – Hour of day 21	10.998	0.003
<i>s</i> (y, x) – Hour of day 22	9.488	0.073
<i>s</i> (y, x) – Hour of day 23	11.014	0.003
<i>s</i> (y, x) – Hour of day 24	11.824	<0.001