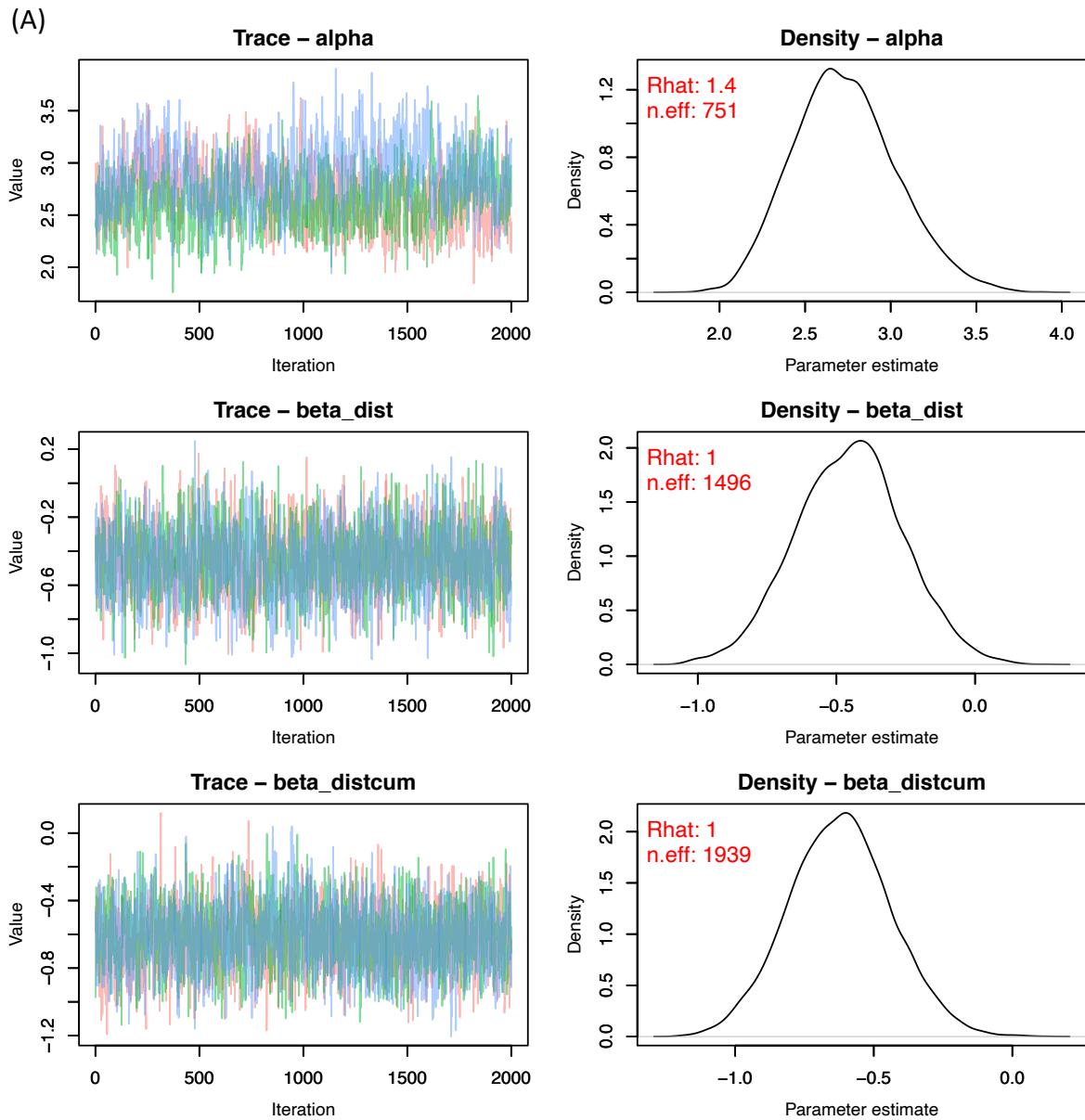


Table S1. Detection efficiency (%) of receiver gates deployed on the Frome, Tamar, Scorff and Bresle estuaries for both year of the study (2018 and 2019) as estimated by the Model 2a.

Receiver gate	Frome		Tamar		Scorff		Bresle	
	2018	2019	2018	2019	2018	2019	2018	2019
E1	99	99	98	99	98	99	98	98
E2	96	98	99	98	NA	98	84	80
E3	NA	68	99	99	98	98	73	83
E4	81	84	96	96	98	98	89	97
E5	NA	61			76	69		
E6	83	72			94	95		



(continued on next page)

Fig. S1. Trace plots and posterior distribution of parameters estimated with (A) Model 2a and (B) Model 2b. Left panels showed the MCMC chains to check convergence of each parameter (named beta); panels on the right represent their posteriors with Gelman-Rubin value (Rhat) and effective sample size (n.eff)

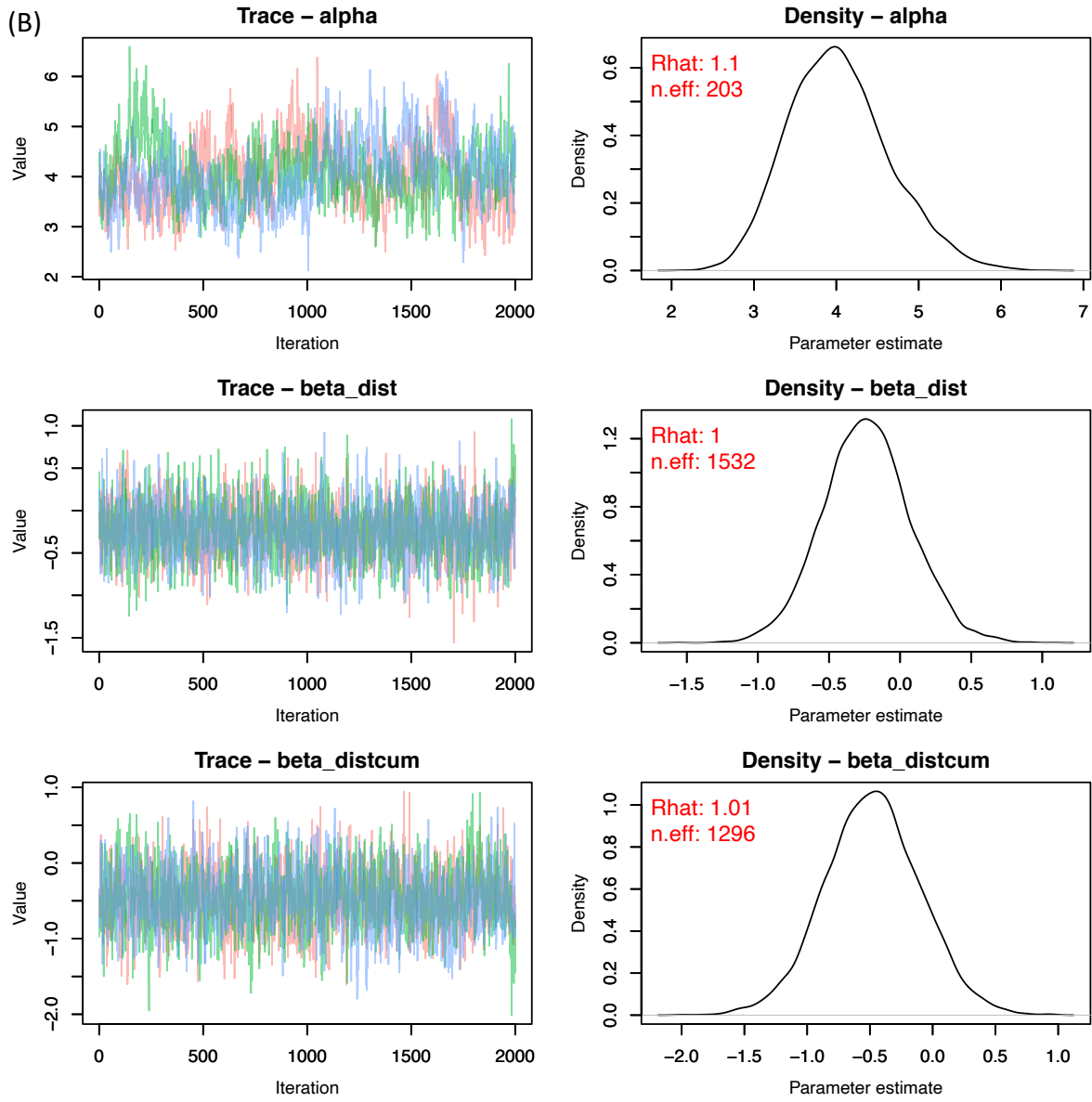


Fig. S1. (continued)