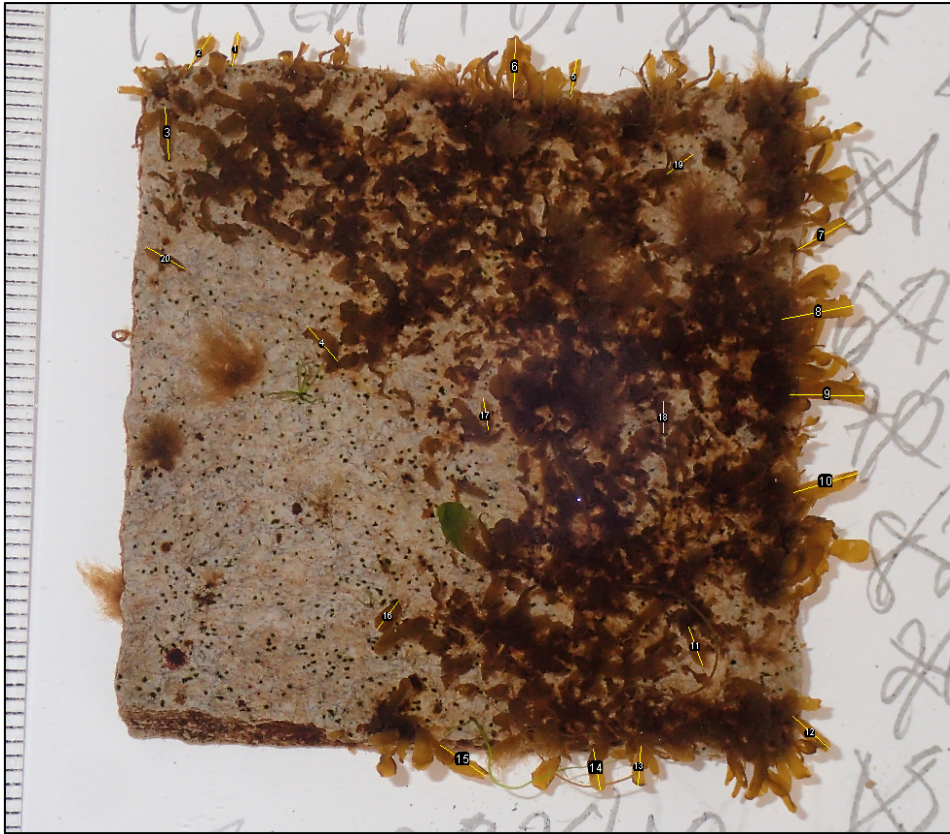
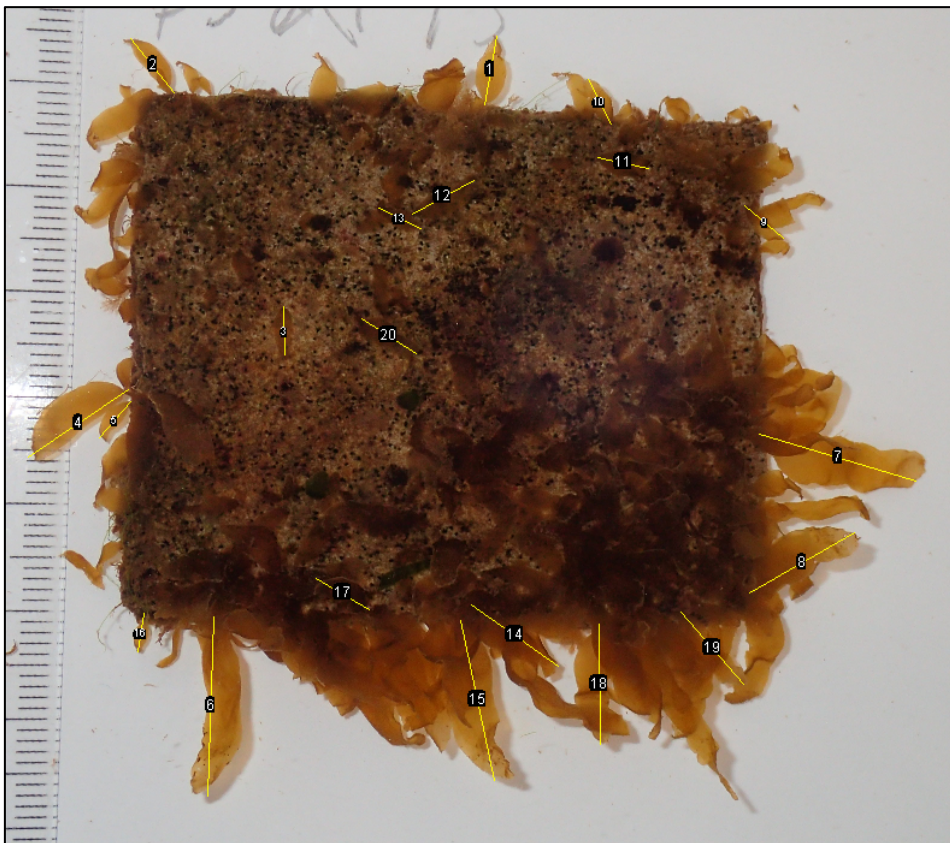


A



B



C



Figure S1. Aerial photographs of three treatment plates (*Durvillaea antarctica* (A), *Lessonia variegata* (B) and *Landsburgia quercifolia* (C)) demonstrating how blades were measured in Image J software. Yellow, numbered lines were blade measurements taken for analysis of each plate.

Table S1. Tukey Honest Significant Differences tests for significant factors. Results were based on two-way ANOVAs run for algal survival against temperature (11, 14, 17 °C) x all light/sediment treatments for each species and at two time point points (Day 42 and Day 100 in experiment). Tukey HSD tests were from each all temperatures (light/sediment treatments pooled), all light/sediment treatments (temperatures pooled) and for all temperature x light/sediment treatments. Significant codes: < 0.001 ‘***’, 0.001 ‘**’, 0.01 ‘*’, 0.5 ‘.’.

***Lessonia variegata* after 42 days Survival**

Temperature:

Factors	Difference	Lower	Upper	p-value
14-11	-0.5402696	-1.925548	0.8450091	0.6106472
17-11	-2.4263139	-3.811593	-1.0410352	0.0003792 ***
17-14	-1.8860443	-3.271323	-0.5007656	0.0056122 **

Light/sediment treatments:

Factors	Difference	Lower	Upper	p-value
HL-C	-1.2843962	-3.69573901	1.126947	0.6022647
S-C	2.0859314	-0.32541147	4.497274	0.1227542
SS-C	1.8555120	-0.55583085	4.266855	0.2145516
T-C	2.5025297	0.09118681	4.913873	0.0381187
TT-C	3.2350191	0.82367625	5.646362	0.0034248 **
S-HL	3.3703275	0.95898469	5.781670	0.0021218 **
SS-HL	3.1399082	0.72856532	5.551251	0.0047710 **
T-HL	3.7869258	1.37558298	6.198269	0.0004659 ***
TT-HL	4.5194153	2.10807241	6.930758	0.0000296 ***
SS-S	-0.2304194	-2.64176222	2.180923	0.9997114
T-S	0.4165983	-1.99474456	2.827941	0.9950360
TT-S	1.1490877	-1.26225513	3.560431	0.7067748
T-SS	0.6470177	-1.76432518	3.058361	0.9643310
TT-SS	1.3795071	-1.03183575	3.790850	0.5273613
TT-T	0.7324894	-1.67885341	3.143832	0.9403902

Temperature x light/sediment treatments:

Factors	Difference	Lower	Upper	<i>p</i> -value
14:C-11:C	-0.17556442	-5.38188341	5.0307546	1.0000000
17:C-11:C	-1.64787874	-6.85419773	3.5584403	0.9987931
11:HL-11:C	-2.12550300	-7.33182199	3.0808160	0.9818356
14:HL-11:C	-0.76911680	-5.97543579	4.4372022	1.0000000
17:HL-11:C	-2.78201186	-7.98833085	2.4243071	0.8484617
11:S-11:C	2.25598769	-2.95033131	7.4623067	0.9688085
14:S-11:C	1.60472588	-3.60159312	6.8110449	0.9991203
17:S-11:C	0.57363739	-4.63268160	5.7799564	1.0000000
11:SS-11:C	1.90296152	-3.30335748	7.1092805	0.9939675
14:SS-11:C	1.98774975	-3.21856925	7.1940687	0.9905462
17:SS-11:C	-0.14761842	-5.35393742	5.0587006	1.0000000
11:T-11:C	3.85411027	-1.35220872	9.0604293	0.3692513
14:T-11:C	2.21850860	-2.98781039	7.4248276	0.9731027
17:T-11:C	-0.38847305	-5.59479204	4.8178459	1.0000000
11:TT-11:C	4.79332007	-0.41299893	9.9996391	0.1001701
14:TT-11:C	2.57295612	-2.63336287	7.7792751	0.9106999
17:TT-11:C	0.51533793	-4.69098106	5.7216569	1.0000000
17:C-14:C	-1.47231432	-6.67863331	3.7340047	0.9996965
11:HL-14:C	-1.94993858	-7.15625757	3.2563804	0.9922259
14:HL-14:C	-0.59355238	-5.79987137	4.6127666	1.0000000
17:HL-14:C	-2.60644744	-7.81276643	2.5998716	0.9020369
11:S-14:C	2.43155211	-2.77476689	7.6378711	0.9417830
14:S-14:C	1.78029030	-3.42602870	6.9866093	0.9970692
17:S-14:C	0.74920181	-4.45711718	5.9555208	1.0000000
11:SS-14:C	2.07852594	-3.12779306	7.2848449	0.9853151
14:SS-14:C	2.16331417	-3.04300483	7.3696332	0.9785979
17:SS-14:C	0.02794600	-5.17837300	5.2342650	1.0000000
11:T-14:C	4.02967469	-1.17664430	9.2359937	0.2996834
14:T-14:C	2.39407302	-2.81224597	7.6003920	0.9485768

17:T-14:C -0.21290863 -5.41922762 4.9934104 1.0000000
11:TT-14:C 4.96888449 -0.23743451 10.1752035 0.0751035
14:TT-14:C 2.74852054 -2.45779845 7.9548395 0.8597192
17:TT-14:C 0.69090235 -4.51541664 5.8972213 1.0000000
11:HL-17:C -0.47762425 -5.68394325 4.7286947 1.0000000
14:HL-17:C 0.87876194 -4.32755705 6.0850809 0.9999998
17:HL-17:C -1.13413312 -6.34045211 4.0721859 0.9999911
11:S-17:C 3.90386643 -1.30245257 9.1101854 0.3486882
14:S-17:C 3.25260462 -1.95371437 8.4589236 0.6498723
17:S-17:C 2.22151613 -2.98480286 7.4278351 0.9727755
11:SS-17:C 3.55084026 -1.65547874 8.7571592 0.5061996
14:SS-17:C 3.63562849 -1.57069051 8.8419475 0.4662681
17:SS-17:C 1.50026032 -3.70605868 6.7065793 0.9996153
11:T-17:C 5.50198901 0.29567002 10.7083080 0.0293991 *
14:T-17:C 3.86638734 -1.33993165 9.0727063 0.3641183
17:T-17:C 1.25940569 -3.94691330 6.4657247 0.9999614
11:TT-17:C 6.44119881 1.23487981 11.6475178 0.0047523 **
14:TT-17:C 4.22083486 -0.98548413 9.4271539 0.2340337
17:TT-17:C 2.16321668 -3.04310232 7.3695357 0.9786068
14:HL-11:HL 1.35638619 -3.84993280 6.5627052 0.9998952
17:HL-11:HL -0.65650887 -5.86282786 4.5498101 1.0000000
11:S-11:HL 4.38149068 -0.82482831 9.5878097 0.1873100
14:S-11:HL 3.73022887 -1.47609012 8.9365479 0.4230499
17:S-11:HL 2.69914039 -2.50717860 7.9054594 0.8754388
11:SS-11:HL 4.02846451 -1.17785448 9.2347835 0.3001334
14:SS-11:HL 4.11325274 -1.09306625 9.3195717 0.2696398
17:SS-11:HL 1.97788457 -3.22843442 7.1842036 0.9910102
11:T-11:HL 5.97961327 0.77329427 11.1859323 0.0118939 *
14:T-11:HL 4.34401160 -0.86230740 9.5503306 0.1975272
17:T-11:HL 1.73702995 -3.46928904 6.9433489 0.9977778
11:TT-11:HL 6.91882306 1.71250407 12.1251421 0.0017808 **

14:TT-11:HL 4.69845912 -0.50785987 9.9047781 0.1164553
17:TT-11:HL 2.64084093 -2.56547806 7.8471599 0.8926158
17:HL-14:HL -2.01289506 -7.21921405 3.1934239 0.9892763
11:S-14:HL 3.02510449 -2.18121451 8.2314235 0.7537759
14:S-14:HL 2.37384268 -2.83247631 7.5801617 0.9520036
17:S-14:HL 1.34275420 -3.86356480 6.5490732 0.9999083
11:SS-14:HL 2.67207832 -2.53424068 7.8783973 0.8836002
14:SS-14:HL 2.75686655 -2.44945245 7.9631855 0.8569584
17:SS-14:HL 0.62149838 -4.58482062 5.8278174 1.0000000
11:T-14:HL 4.62322707 -0.58309192 9.8295461 0.1308873
14:T-14:HL 2.98762540 -2.21869359 8.1939444 0.7697025
17:T-14:HL 0.38064375 -4.82567524 5.5869627 1.0000000
11:TT-14:HL 5.56243687 0.35611787 10.7687559 0.0262961 *
14:TT-14:HL 3.34207292 -1.86424607 8.5483919 0.6068959
17:TT-14:HL 1.28445474 -3.92186426 6.4907737 0.9999495
11:S-17:HL 5.03799955 -0.16831945 10.2443185 0.0668469
14:S-17:HL 4.38673774 -0.81958125 9.5930567 0.1859122
17:S-17:HL 3.35564925 -1.85066974 8.5619682 0.6003308
11:SS-17:HL 4.68497338 -0.52134562 9.8912924 0.1189406
14:SS-17:HL 4.76976161 -0.43655739 9.9760806 0.1040236
17:SS-17:HL 2.63439344 -2.57192556 7.8407124 0.8944224
11:T-17:HL 6.63612213 1.42980314 11.8424411 0.0031944 **
14:T-17:HL 5.00052046 -0.20579853 10.2068395 0.0712195
17:T-17:HL 2.39353881 -2.81278018 7.5998578 0.9486695
11:TT-17:HL 7.57533193 2.36901293 12.7816509 0.0004458 ***
14:TT-17:HL 5.35496798 0.14864899 10.5612870 0.0384044 *
17:TT-17:HL 3.29734980 -1.90896920 8.5036688 0.6284565
14:S-11:S -0.65126181 -5.85758080 4.5550572 1.0000000
17:S-11:S -1.68235029 -6.88866928 3.5239687 0.9984616
11:SS-11:S -0.35302617 -5.55934516 4.8532928 1.0000000
14:SS-11:S -0.26823794 -5.47455693 4.9380811 1.0000000

17:SS-11:S -2.40360611 -7.60992510 2.8027129 0.9469041
11:T-11:S 1.59812259 -3.60819641 6.8044416 0.9991629
14:T-11:S -0.03747909 -5.24379808 5.1688399 1.0000000
17:T-11:S -2.64446073 -7.85077972 2.5618583 0.8915934
11:TT-11:S 2.53733238 -2.66898661 7.7436514 0.9193624
14:TT-11:S 0.31696844 -4.88935055 5.5232874 1.0000000
17:TT-11:S -1.74064975 -6.94696874 3.4656692 0.9977246
17:S-14:S -1.03108848 -6.23740747 4.1752305 0.9999977
11:SS-14:S 0.29823564 -4.90808335 5.5045546 1.0000000
14:SS-14:S 0.38302387 -4.82329512 5.5893429 1.0000000
17:SS-14:S -1.75234430 -6.95866329 3.4539747 0.9975456
11:T-14:S 2.24938439 -2.95693460 7.4557034 0.9695997
14:T-14:S 0.61378272 -4.59253627 5.8201017 1.0000000
17:T-14:S -1.99319892 -7.19951792 3.2131201 0.9902818
11:TT-14:S 3.18859419 -2.01772480 8.3949132 0.6800976
14:TT-14:S 0.96823025 -4.23808875 6.1745492 0.9999991
17:TT-14:S -1.08938794 -6.29570693 4.1169311 0.9999950
11:SS-17:S 1.32932412 -3.87699487 6.5356431 0.9999198
14:SS-17:S 1.41411235 -3.79220664 6.6204313 0.9998190
17:SS-17:S -0.72125582 -5.92757481 4.4850632 1.0000000
11:T-17:S 3.28047288 -1.92584611 8.4867919 0.6365562
14:T-17:S 1.64487121 -3.56144779 6.8511902 0.9988189
17:T-17:S -0.96211044 -6.16842943 4.2442086 0.9999992
11:TT-17:S 4.21968267 -0.98663632 9.4260017 0.2343966
14:TT-17:S 1.99931873 -3.20700026 7.2056377 0.9899778
17:TT-17:S -0.05829946 -5.26461845 5.1480195 1.0000000
14:SS-11:SS 0.08478823 -5.12153076 5.2911072 1.0000000
17:SS-11:SS -2.05057994 -7.25689893 3.1557391 0.9871225
11:T-11:SS 1.95114876 -3.25517024 7.1574677 0.9921762
14:T-11:SS 0.31554708 -4.89077191 5.5218661 1.0000000
17:T-11:SS -2.29143456 -7.49775355 2.9148844 0.9642985

11:TT-11:SS 2.89035855 -2.31596044 8.0966775 0.8089114
14:TT-11:SS 0.66999461 -4.53632439 5.8763136 1.0000000
17:TT-11:SS -1.38762358 -6.59394257 3.8186954 0.9998585
17:SS-14:SS -2.13536817 -7.34168716 3.0709508 0.9810300
11:T-14:SS 1.86636053 -3.33995847 7.0726795 0.9950910
14:T-14:SS 0.23075885 -4.97556014 5.4370778 1.0000000
17:T-14:SS -2.37622279 -7.58254178 2.8300962 0.9516090
11:TT-14:SS 2.80557032 -2.40074867 8.0118893 0.8402616
14:TT-14:SS 0.58520638 -4.62111262 5.7915254 1.0000000
17:TT-14:SS -1.47241181 -6.67873080 3.7339072 0.9996962
11:T-17:SS 4.00172870 -1.20459030 9.2080477 0.3101842
14:T-17:SS 2.36612702 -2.84019197 7.5724460 0.9532670
17:T-17:SS -0.24085462 -5.44717361 4.9654644 1.0000000
11:TT-17:SS 4.94093849 -0.26538050 10.1472575 0.0786869
14:TT-17:SS 2.72057455 -2.48574445 7.9268935 0.8687457
17:TT-17:SS 0.66295636 -4.54336263 5.8692754 1.0000000
14:T-11:T -1.63560167 -6.84192066 3.5707173 0.9988954
17:T-11:T -4.24258332 -9.44890231 0.9637357 0.2272584
11:TT-11:T 0.93920979 -4.26710920 6.1455288 0.9999994
14:TT-11:T -1.28115415 -6.48747314 3.9251648 0.9999512
17:TT-11:T -3.33877234 -8.54509133 1.8675467 0.6084909
17:T-14:T -2.60698165 -7.81330064 2.5993373 0.9018946
11:TT-14:T 2.57481147 -2.63150753 7.7811305 0.9102332
14:TT-14:T 0.35444752 -4.85187147 5.5607665 1.0000000
17:TT-14:T -1.70317067 -6.90948966 3.5031483 0.9982261
11:TT-17:T 5.18179311 -0.02452588 10.3881121 0.0521908
14:TT-17:T 2.96142917 -2.24488982 8.1677482 0.7805766
17:TT-17:T 0.90381098 -4.30250801 6.1101300 0.9999997
14:TT-11:TT -2.22036394 -7.42668294 2.9859550 0.9729012
17:TT-11:TT -4.27798213 -9.48430112 0.9283369 0.2165340
17:TT-14:TT -2.05761819 -7.26393718 3.1487008 0.9866848

***Lessonia variegata* after 100 days Survival**

Temperature:

Factors	Difference	Lower	Upper	<i>p</i> -value
14-11	-1.405508	-2.572313	-0.2387027	0.0151989
17-11	-4.285018	-5.451823	-3.1182128	0.0000000
17-14	-2.879510	-4.046315	-1.7127050	0.0000019

Light/sediment treatments:

Factors	Difference	Lower	Upper	<i>p</i> -value
HL-C	-0.22445217	-2.2554997	1.806595	0.9994132
S-C	1.35353455	-0.6775130	3.384582	0.3595029
SS-C	1.58398948	-0.4470581	3.615037	0.2026185
T-C	1.54830500	-0.4827425	3.579353	0.2230781
TT-C	3.00473143	0.9736839	5.035779	0.0010431
S-HL	1.57798672	-0.4530608	3.609034	0.2059610
SS-HL	1.80844165	-0.2226059	3.839489	0.1046472
T-HL	1.77275716	-0.2582904	3.803805	0.1169434
TT-HL	3.22918360	1.1981361	5.260231	0.0003915
SS-S	0.23045493	-1.8005926	2.261502	0.9993329
T-S	0.19477044	-1.8362771	2.225818	0.9997063
TT-S	1.65119688	-0.3798507	3.682244	0.1678866
T-SS	-0.03568448	-2.0667320	1.995363	0.9999999
TT-SS	1.42074195	-0.6103056	3.451789	0.3078284
TT-T	1.45642644	-0.5746211	3.487474	0.2823099

Temperature x Light/sediment:

Factors	Difference	Lower	Upper	<i>p</i> -value
14:C-11:C	-1.82358675	-6.20881192	2.56163843	0.9784405
17:C-11:C	-2.43986287	-6.82508804	1.94536231	0.8064541
11:HL-11:C	-1.50525518	-5.89048036	2.87996999	0.9969420
14:HL-11:C	-0.70161764	-5.08684281	3.68360754	0.9999999
17:HL-11:C	-2.72993329	-7.11515846	1.65529188	0.6553503
11:S-11:C	2.00190160	-2.38332357	6.38712678	0.9515231

14:S-11:C 1.03150369 -3.35372148 5.41672886 0.9999737
17:S-11:C -3.23625125 -7.62147642 1.14897392 0.3742627
11:SS-11:C 1.72622886 -2.65899631 6.11145403 0.9871917
14:SS-11:C 1.34031667 -3.04490851 5.72554184 0.9992052
17:SS-11:C -2.57802670 -6.96325187 1.80719847 0.7382596
11:T-11:C 2.81494731 -1.57027786 7.20017248 0.6069211
14:T-11:C 0.15968293 -4.22554224 4.54490810 1.0000000
17:T-11:C -2.59316486 -6.97839003 1.79206031 0.7303058
11:TT-11:C 5.08243747 0.69721230 9.46766265 0.0106944 *
14:TT-11:C 1.68091475 -2.70431042 6.06613992 0.9901609
17:TT-11:C -2.01260753 -6.39783271 2.37261764 0.9493746
17:C-14:C -0.61627612 -5.00150129 3.76894905 1.0000000
11:HL-14:C 0.31833156 -4.06689361 4.70355673 1.0000000
14:HL-14:C 1.12196911 -3.26325606 5.50719428 0.9999176
17:HL-14:C -0.90634654 -5.29157171 3.47887863 0.9999958
11:S-14:C 3.82548835 -0.55973682 8.21071352 0.1481276
14:S-14:C 2.85509043 -1.53013474 7.24031560 0.5838524
17:S-14:C -1.41266450 -5.79788967 2.97256067 0.9985159
11:SS-14:C 3.54981561 -0.83540956 7.93504078 0.2360382
14:SS-14:C 3.16390341 -1.22132176 7.54912858 0.4114351
17:SS-14:C -0.75443995 -5.13966512 3.63078522 0.9999997
11:T-14:C 4.63853406 0.25330889 9.02375923 0.0291264 *
14:T-14:C 1.98326968 -2.40195550 6.36849485 0.9551073
17:T-14:C -0.76957812 -5.15480329 3.61564705 0.9999996
11:TT-14:C 6.90602422 2.52079905 11.29124939 0.0001170 ***
14:TT-14:C 3.50450150 -0.88072368 7.88972667 0.2535119
17:TT-14:C -0.18902079 -4.57424596 4.19620438 1.0000000
11:HL-17:C 0.93460768 -3.45061749 5.31983285 0.9999935
14:HL-17:C 1.73824523 -2.64697994 6.12347040 0.9862961
17:HL-17:C -0.29007042 -4.67529559 4.09515475 1.0000000
11:S-17:C 4.44176447 0.05653930 8.82698964 0.0444203 *

14:S-17:C 3.47136655 -0.91385862 7.85659172 0.2668396
17:S-17:C -0.79638838 -5.18161355 3.58883679 0.9999994
11:SS-17:C 4.16609173 -0.21913344 8.55131690 0.0780070
14:SS-17:C 3.78017953 -0.60504564 8.16540470 0.1604800
17:SS-17:C -0.13816383 -4.52338900 4.24706134 1.0000000
11:T-17:C 5.25481018 0.86958501 9.64003535 0.0071380 **
14:T-17:C 2.59954580 -1.78567938 6.98477097 0.7269290
17:T-17:C -0.15330200 -4.53852717 4.23192317 1.0000000
11:TT-17:C 7.52230034 3.13707517 11.90752551 0.0000241 ***
14:TT-17:C 4.12077762 -0.26444756 8.50600279 0.0852703
17:TT-17:C 0.42725533 -3.95796984 4.81248050 1.0000000
14:HL-11:HL 0.80363755 -3.58158762 5.18886272 0.9999993
17:HL-11:HL -1.22467810 -5.60990327 3.16054707 0.9997412
11:S-11:HL 3.50715679 -0.87806838 7.89238196 0.2524640
14:S-11:HL 2.53675887 -1.84846630 6.92198404 0.7595014
17:S-11:HL -1.73099606 -6.11622124 2.65422911 0.9868421
11:SS-11:HL 3.23148405 -1.15374112 7.61670922 0.3766585
14:SS-11:HL 2.84557185 -1.53965332 7.23079702 0.5893267
17:SS-11:HL -1.07277151 -5.45799668 3.31245366 0.9999550
11:T-11:HL 4.32020250 -0.06502267 8.70542767 0.0571887 .
14:T-11:HL 1.66493811 -2.72028706 6.05016329 0.9910654
17:T-11:HL -1.08790968 -5.47313485 3.29731549 0.9999455
11:TT-11:HL 6.58769266 2.20246749 10.97291783 0.0002636 ***
14:TT-11:HL 3.18616993 -1.19905524 7.57139510 0.3998141
17:TT-11:HL -0.50735235 -4.89257752 3.87787282 1.0000000
17:HL-14:HL -2.02831565 -6.41354082 2.35690952 0.9461027
11:S-14:HL 2.70351924 -1.68170593 7.08874441 0.6701820
14:S-14:HL 1.73312132 -2.65210385 6.11834649 0.9866839
17:S-14:HL -2.53463361 -6.91985878 1.85059156 0.7605768
11:SS-14:HL 2.42784650 -1.95737867 6.81307167 0.8119569
14:SS-14:HL 2.04193430 -2.34329087 6.42715947 0.9431493

17:SS-14:HL -1.87640906 -6.26163423 2.50881611 0.9720877
11:T-14:HL 3.51656495 -0.86866022 7.90179012 0.2487751
14:T-14:HL 0.86130056 -3.52392461 5.24652574 0.9999980
17:T-14:HL -1.89154723 -6.27677240 2.49367794 0.9700320
11:TT-14:HL 5.78405511 1.39882994 10.16928028 0.0019832 **
14:TT-14:HL 2.38253238 -2.00269279 6.76775756 0.8320117
17:TT-14:HL -1.31098990 -5.69621507 3.07423527 0.9993929
11:S-17:HL 4.73183489 0.34660972 9.11706006 0.0237217 *
14:S-17:HL 3.76143698 -0.62378820 8.14666215 0.1658218
17:S-17:HL -0.50631796 -4.89154313 3.87890721 1.0000000
11:SS-17:HL 4.45616215 0.07093698 8.84138732 0.0430924 *
14:SS-17:HL 4.07024995 -0.31497522 8.45547512 0.0940497
17:SS-17:HL 0.15190659 -4.23331858 4.53713176 1.0000000
11:T-17:HL 5.54488060 1.15965543 9.93010577 0.0035606 ***
14:T-17:HL 2.88961622 -1.49560895 7.27484139 0.5639970
17:T-17:HL 0.13676842 -4.24845675 4.52199360 1.0000000
11:TT-17:HL 7.81237076 3.42714559 12.19759593 0.0000115
14:TT-17:HL 4.41084804 0.02562287 8.79607321 0.0473976 *
17:TT-17:HL 0.71732575 -3.66789942 5.10255092 0.9999999
14:S-11:S -0.97039792 -5.35562309 3.41482725 0.9999888
17:S-11:S -5.23815285 -9.62337802 -0.85292768 0.0074248 **
11:SS-11:S -0.27567274 -4.66089791 4.10955243 1.0000000
14:SS-11:S -0.66158494 -5.04681011 3.72364023 1.0000000
17:SS-11:S -4.57992830 -8.96515347 -0.19470313 0.0330804 *
11:T-11:S 0.81304571 -3.57217946 5.19827088 0.9999992
14:T-11:S -1.84221867 -6.22744385 2.54300650 0.9763404
17:T-11:S -4.59506647 -8.98029164 -0.20984130 0.0320144 *
11:TT-11:S 3.08053587 -1.30468930 7.46576104 0.4562103
14:TT-11:S -0.32098686 -4.70621203 4.06423832 1.0000000
17:TT-11:S -4.01450914 -8.39973431 0.37071603 0.1046186
17:S-14:S -4.26775494 -8.65298011 0.11747024 0.0636433

11:SS-14:S 0.69472518 -3.69050000 5.07995035 0.99999999
 14:SS-14:S 0.30881298 -4.07641219 4.69403815 1.00000000
 17:SS-14:S -3.60953038 -7.99475556 0.77569479 0.2143393
 11:T-14:S 1.78344362 -2.60178155 6.16866880 0.9824791
 14:T-14:S -0.87182076 -5.25704593 3.51340441 0.9999976
 17:T-14:S -3.62466855 -8.00989372 0.76055662 0.2090773
 11:TT-14:S 4.05093379 -0.33429138 8.43615896 0.0976044
 14:TT-14:S 0.64941106 -3.73581411 5.03463623 1.00000000
 17:TT-14:S -3.04411122 -7.42933639 1.34111395 0.4763176
 11:SS-17:S 4.96248011 0.57725494 9.34770528 0.0141040
 14:SS-17:S 4.57656791 0.19134274 8.96179309 0.0333214 *
 17:SS-17:S 0.65822455 -3.72700062 5.04344972 1.00000000
 11:T-17:S 6.05119856 1.66597339 10.43642373 0.0010214 **
 14:T-17:S 3.39593418 -0.98929099 7.78115935 0.2988969
 17:T-17:S 0.64308638 -3.74213879 5.02831156 1.00000000
 11:TT-17:S 8.31868872 3.93346355 12.70391389 0.0000032 ***
 14:TT-17:S 4.91716600 0.53194083 9.30239117 0.0156414 *
 17:TT-17:S 1.22364371 -3.16158146 5.60886888 0.9997440
 14:SS-11:SS -0.38591220 -4.77113737 3.99931297 1.00000000
 17:SS-11:SS -4.30425556 -8.68948073 0.08096961 0.0590868
 11:T-11:SS 1.08871845 -3.29650672 5.47394362 0.9999450
 14:T-11:SS -1.56654593 -5.95177111 2.81867924 0.9952710
 17:T-11:SS -4.31939373 -8.70461890 0.06583144 0.0572836
 11:TT-11:SS 3.35620861 -1.02901656 7.74143378 0.3167200
 14:TT-11:SS -0.04531411 -4.43053929 4.33991106 1.00000000
 17:TT-11:SS -3.73883640 -8.12406157 0.64638877 0.1724472
 17:SS-14:SS -3.91834336 -8.30356853 0.46688181 0.1251996
 11:T-14:SS 1.47463065 -2.91059453 5.85985582 0.9975708
 14:T-14:SS -1.18063374 -5.56585891 3.20459144 0.9998386
 17:T-14:SS -3.93348153 -8.31870670 0.45174364 0.1217534
 11:TT-14:SS 3.74212081 -0.64310436 8.12734598 0.1714718

14:TT-14:SS 0.34059808 -4.04462709 4.72582325 1.0000000
17:TT-14:SS -3.35292420 -7.73814937 1.03230097 0.3182220
11:T-17:SS 5.39297401 1.00774884 9.77819918 0.0051363 **
14:T-17:SS 2.73770963 -1.64751554 7.12293480 0.6509598
17:T-17:SS -0.01513817 -4.40036334 4.37008700 1.0000000
11:TT-17:SS 7.66046417 3.27523900 12.04568934 0.0000169 ***
14:TT-17:SS 4.25894145 -0.12628373 8.64416662 0.0647890
17:TT-17:SS 0.56541916 -3.81980601 4.95064433 1.0000000
14:T-11:T -2.65526438 -7.04048955 1.72996079 0.6968868
17:T-11:T -5.40811218 -9.79333735 -1.02288700 0.0049532 **
11:TT-11:T 2.26749016 -2.11773501 6.65271533 0.8776062
14:TT-11:T -1.13403256 -5.51925773 3.25119261 0.9999050
17:TT-11:T -4.82755485 -9.21278002 -0.44232968 0.0191572 *
17:T-14:T -2.75284779 -7.13807296 1.63237738 0.6423854
11:TT-14:T 4.92275454 0.53752937 9.30797972 0.0154436 *
14:TT-14:T 1.52123182 -2.86399335 5.90645699 0.9965633
17:TT-14:T -2.17229046 -6.55751564 2.21293471 0.9091657
11:TT-17:T 7.67560234 3.29037717 12.06082751 0.0000163 ***
14:TT-17:T 4.27407961 -0.11114556 8.65930478 0.0628321
17:TT-17:T 0.58055733 -3.80466784 4.96578250 1.0000000
14:TT-11:TT -3.40152273 -7.78674790 0.98370245 0.2964410
17:TT-11:TT -7.09504501 -11.48027018 -2.70981984 0.0000721 ***
17:TT-14:TT -3.69352228 -8.07874746 0.69170289 0.1863473

Table S2. Tukey Honest Significant Differences tests for significant factors. Results were based on two-way ANOVAs run for algal average blade length against temperature (11, 14, 17 °C) x all light/sediment treatments for each species and at two time point points (Day 42 and Day 100 in experiment). Tukey HSD tests were from each all temperatures (light/sediment treatments pooled), all light/sediment treatments (temperatures pooled) and for all temperature x light/sediment treatments. Significant codes: < 0.001 '***', 0.001 '**', 0.01 '*', 0.5 '.'.

***Landsburgia quercifolia* after 42 days – Average Blade Length**

Temperature:

Factors	Difference	Lower	Upper	p-value
14-11	-0.09918941	-0.26710823	0.06872941	0.3291635
17-11	0.01371873	-0.15178387	0.17922133	0.9775839
17-14	0.11290814	-0.05501068	0.28082696	0.2404569

Light/sediment treatments:

Factors	Difference	Lower	Upper	p-value
HL-C	0.07415262	-0.2229037	0.371208970	0.9736004
S-C	0.08600155	-0.2110548	0.383057904	0.9506190
SS-C	-0.12112456	-0.4181809	0.175931797	0.8199119
T-C	0.04341009	-0.2536463	0.340466443	0.9977243
TT-C	-0.22054612	-0.5176025	0.076510232	0.2471380
S-HL	0.01184893	-0.2763381	0.300035926	0.9999955
SS-HL	-0.19527717	-0.4834642	0.092909818	0.3404257
T-HL	-0.03074253	-0.3189295	0.257444465	0.9995008
TT-HL	-0.29469874	-0.5828857	-0.006511746	0.0425818 *
SS-S	-0.20712611	-0.4953131	0.081060884	0.2790801
T-S	-0.04259146	-0.3307785	0.245595531	0.9975989
TT-S	-0.30654767	-0.5947347	-0.018360680	0.0315738 *
T-SS	0.16453465	-0.1236523	0.452721638	0.5281338
TT-SS	-0.09942156	-0.3876086	0.188765428	0.9011836
TT-T	-0.26395621	-0.5521432	0.024230781	0.0885629

Temperature x light/sediment treatments:

Factors	Difference	Lower	Upper	p-value
14:C-11:C	-0.8992231960	-1.595216544	-0.20322985	0.0027131 **
17:C-11:C	0.0481816177	-0.574333757	0.67069699	1.0000000
11:HL-11:C	-0.1204230874	-0.742938462	0.50209229	0.9999983
14:HL-11:C	-0.1902392656	-0.812754641	0.43227611	0.9991713
17:HL-11:C	-0.1136050632	-0.736120438	0.50891031	0.9999993
11:S-11:C	-0.0737026047	-0.696217980	0.54881277	1.0000000
14:S-11:C	-0.2007557514	-0.823271126	0.42175962	0.9984338
17:S-11:C	-0.1142622584	-0.736777633	0.50825312	0.9999992
11:SS-11:C	-0.3286290078	-0.951144383	0.29388637	0.8574301
14:SS-11:C	-0.2959331950	-0.918448570	0.32658218	0.9317049
17:SS-11:C	-0.3855367340	-1.008052109	0.23697864	0.6601138
11:T-11:C	-0.2828970216	-0.905412396	0.33961835	0.9521614
14:T-11:C	-0.1035029369	-0.726018312	0.51901244	0.9999998
17:T-11:C	-0.1300950393	-0.752610414	0.49242034	0.9999948
11:TT-11:C	-0.4575696553	-1.080085030	0.16494572	0.3784405
14:TT-11:C	-0.3652024526	-0.987717828	0.25731292	0.7380733
17:TT-11:C	-0.4855915213	-1.108106896	0.13692385	0.2863515
17:C-14:C	0.9474048138	0.251411466	1.64339816	0.0012914 **
11:HL-14:C	0.7788001086	0.082806761	1.47479346	0.0161269 *
14:HL-14:C	0.7089839304	0.012990583	1.40497728	0.0421510 *
17:HL-14:C	0.7856181328	0.089624785	1.48161148	0.0146330 *
11:S-14:C	0.8255205914	0.129527244	1.52151394	0.0082015 **
14:S-14:C	0.6984674447	0.002474097	1.39446079	0.0484106 *
17:S-14:C	0.7849609377	0.088967590	1.48095429	0.0147711 *
11:SS-14:C	0.5705941882	-0.125399159	1.26658754	0.2181728
14:SS-14:C	0.6032900010	-0.092703347	1.29928335	0.1539127
17:SS-14:C	0.5136864620	-0.182306886	1.20967981	0.3717858
11:T-14:C	0.6163261745	-0.079667173	1.31231952	0.1329024
14:T-14:C	0.7957202591	0.099726911	1.49171361	0.0126578 *

Landsburgia quercifolia after 42 days**Temperature x light/sediment treatments**

Factors	Difference	Lower	Upper	p-value
17:T-14:C	0.7691281567	0.073134809	1.46512150	0.0184942 *
11:TT-14:C	0.4416535408	-0.254339807	1.13764689	0.6222203
14:TT-14:C	0.5340207434	-0.161972604	1.23001409	0.3109262
17:TT-14:C	0.4136316747	-0.282361673	1.10962502	0.7203568
11:HL-17:C	-0.1686047052	-0.791120080	0.45391067	0.9998169
14:HL-17:C	-0.2384208833	-0.860936258	0.38409449	0.9899172
17:HL-17:C	-0.1617866809	-0.784302056	0.46072869	0.9998933
11:S-17:C	-0.1218842224	-0.744399597	0.50063115	0.9999980
14:S-17:C	-0.2489373691	-0.871452744	0.37357801	0.9846172
17:S-17:C	-0.1624438761	-0.784959251	0.46007150	0.9998874
11:SS-17:C	-0.3768106256	-0.999326000	0.24570475	0.6942498
14:SS-17:C	-0.3441148127	-0.966630188	0.27840056	0.8110066
17:SS-17:C	-0.4337183518	-1.056233727	0.18879702	0.4673344
11:T-17:C	-0.3310786393	-0.953594014	0.29143674	0.8505414
14:T-17:C	-0.1516845546	-0.774199930	0.47083082	0.9999551
17:T-17:C	-0.1782766570	-0.800792032	0.44423872	0.9996272
11:TT-17:C	-0.5057512730	-1.128266648	0.11676410	0.2298776
14:TT-17:C	-0.4133840703	-1.035899445	0.20913130	0.5480735
17:TT-17:C	-0.5337731390	-1.156288514	0.08874224	0.1653620
14:HL-11:HL	-0.0698161782	-0.692331553	0.55269920	1.000000
17:HL-11:HL	0.0068180242	-0.615697351	0.62933340	1.000000
11:S-11:HL	0.0467204828	-0.575794892	0.66923586	1.000000
14:S-11:HL	-0.0803326639	-0.702848039	0.54218271	1.000000
17:S-11:HL	0.0061608291	-0.616354546	0.62867620	1.000000
11:SS-11:HL	-0.2082059204	-0.830721295	0.41430945	0.997623
14:SS-11:HL	-0.1755101076	-0.798025482	0.44700527	0.9996939
17:SS-11:HL	-0.2651136466	-0.887629022	0.35740173	0.9724989
11:T-11:HL	-0.1624739341	-0.784989309	0.46004144	0.9998871

Landsburgia quercifolia after 42 days**Temperature x light/sediment treatments**

Factors	Difference	Lower	Upper	<i>p</i> -value
14:T-11:HL	0.0169201505	-0.605595224	0.63943553	1.0000000
17:T-11:HL	-0.0096719519	-0.632187327	0.61284342	1.0000000
11:TT-11:HL	-0.3371465678	-0.959661943	0.28536881	0.8327273
14:TT-11:HL	-0.2447793652	-0.867294740	0.37773601	0.9869251
17:TT-11:HL	-0.3651684339	-0.987683809	0.25734694	0.7381985
17:HL-14:HL	0.0766342024	-0.545881173	0.69914958	1.0000000
11:S-14:HL	0.1165366609	-0.505978714	0.73905204	0.9999990
14:S-14:HL	-0.0105164858	-0.633031861	0.61199889	1.0000000
17:S-14:HL	0.0759770073	-0.546538368	0.69849238	1.0000000
11:SS-14:HL	-0.1383897422	-0.760905117	0.48412563	0.9999874
14:SS-14:HL	-0.1056939294	-0.728209304	0.51682145	0.9999998
17:SS-14:HL	-0.1952974684	-0.817812843	0.42721791	0.9988662
11:T-14:HL	-0.0926577559	-0.715173131	0.52985762	1.0000000
14:T-14:HL	0.0867363287	-0.535779046	0.70925170	1.0000000
17:T-14:HL	0.0601442263	-0.562371149	0.68265960	1.0000000
11:TT-14:HL	-0.2673303896	-0.889845765	0.35518499	0.9703976
14:TT-14:HL	-0.1749631870	-0.797478562	0.44755219	0.9997058
17:TT-14:HL	-0.2953522557	-0.917867631	0.32716312	0.9327243
11:S-17:HL	0.0399024585	-0.582612916	0.66241783	1.0000000
14:S-17:HL	-0.0871506882	-0.709666063	0.53536469	1.0000000
17:S-17:HL	-0.0006571951	-0.623172570	0.62185818	1.0000000
11:SS-17:HL	-0.2150239446	-0.837539320	0.40749143	0.9965957
14:SS-17:HL	-0.1823281318	-0.804843507	0.44018724	0.9995067
17:SS-17:HL	-0.2719316708	-0.894447046	0.35058370	0.9656584
11:T-17:HL	-0.1692919583	-0.791807333	0.45322342	0.9998070
14:T-17:HL	0.0101021263	-0.612413249	0.63261750	1.0000000
17:T-17:HL	-0.0164899761	-0.639005351	0.60602540	1.0000000
11:TT-17:HL	-0.3439645921	-0.966479967	0.27855078	0.8114886

Landsburgia quercifolia after 42 days**Temperature x light/sediment treatments**

Factors	Difference	Lower	Upper	p-value
14:TT-17:HL	-0.2515973894	-0.874112764	0.37091799	0.9829815
17:TT-17:HL	-0.3719864581	-0.994501833	0.25052892	0.7127155
14:S-11:S	-0.1270531467	-0.749568522	0.49546223	0.9999963
17:S-11:S	-0.0405596537	-0.663075029	0.58195572	1.0000000
11:SS-11:S	-0.2549264032	-0.877441778	0.36758897	0.9807479
14:SS-11:S	-0.2222305903	-0.844745965	0.40028478	0.9951320
17:SS-11:S	-0.3118341293	-0.934349504	0.31068125	0.8997463
11:T-11:S	-0.2091944169	-0.831709792	0.41332096	0.9974926
14:T-11:S	-0.0298003322	-0.652315707	0.59271504	1.0000000
17:T-11:S	-0.0563924346	-0.678907810	0.56612294	1.0000000
11:TT-11:S	-0.3838670506	-1.006382426	0.23864832	0.6667080
14:TT-11:S	-0.2914998479	-0.914015223	0.33101553	0.9392255
17:TT-11:S	-0.4118889166	-1.034404292	0.21062646	0.5541053
17:S-14:S	0.0864934930	-0.536021882	0.70900887	1.0000000
11:SS-14:S	-0.1278732565	-0.750388631	0.49464212	0.9999959
14:SS-14:S	-0.0951774436	-0.717692819	0.52733793	1.0000000
17:SS-14:S	-0.1847809827	-0.807296358	0.43773439	0.9994184
11:T-14:S	-0.0821412702	-0.704656645	0.54037410	1.0000000
14:T-14:S	0.0972528145	-0.525262560	0.71976819	0.9999999
17:T-14:S	0.0706607121	-0.551854663	0.69317609	1.0000000
11:TT-14:S	-0.2568139039	-0.879329279	0.36570147	0.9793849
14:TT-14:S	-0.1644467012	-0.786962076	0.45806867	0.9998677
17:TT-14:S	-0.2848357699	-0.907351145	0.33767960	0.9494326
11:SS-17:S	-0.2143667495	-0.836882124	0.40814863	0.9967086
14:SS-17:S	-0.1816709366	-0.804186312	0.44084444	0.9995283
17:SS-17:S	-0.2712744757	-0.893789851	0.35124090	0.9663673
11:T-17:S	-0.1686347632	-0.791150138	0.45388061	0.9998165
14:T-17:S	0.0107593215	-0.611756053	0.63327470	1.0000000

Landsburgia quercifolia after 42 days**Temperature x light/sediment treatments**

Factors	Difference	Lower	Upper	p-value
17:T-17:S	-0.0158327809	-0.638348156	0.60668259	1.0000000
11:TT-17:S	-0.3433073969	-0.965822772	0.27920798	0.8135899
14:TT-17:S	-0.2509401943	-0.873455569	0.37157518	0.9833976
17:TT-17:S	-0.3713292630	-0.993844638	0.25118611	0.7152048
14:SS-11:SS	0.0326958129	-0.589819562	0.65521119	1.0000000
17:SS-11:SS	-0.0569077262	-0.679423101	0.56560765	1.0000000
11:T-11:SS	0.0457319863	-0.576783389	0.66824736	1.0000000
14:T-11:SS	0.2251260709	-0.397389304	0.84764145	0.9944137
17:T-11:SS	0.1985339686	-0.423981406	0.82104934	0.9986243
11:TT-11:SS	-0.1289406474	-0.751456022	0.49357473	0.9999954
14:TT-11:SS	-0.0365734448	-0.659088820	0.58594193	1.0000000
17:TT-11:SS	-0.1569625135	-0.779477888	0.46555286	0.9999287
17:SS-14:SS	-0.0896035390	-0.712118914	0.53291184	1.0000000
11:T-14:SS	0.0130361734	-0.609479201	0.63555155	1.0000000
14:T-14:SS	0.1924302581	-0.430085117	0.81494563	0.9990492
17:T-14:SS	0.1658381557	-0.456677219	0.78835353	0.9998523
11:TT-14:SS	-0.1616364603	-0.784151835	0.46087891	0.9998946
14:TT-14:SS	-0.0692692576	-0.691784633	0.55324612	1.0000000
17:TT-14:SS	-0.1896583263	-0.812173701	0.43285705	0.9992013
11:T-17:SS	0.1026397125	-0.519875662	0.72515509	0.9999998
14:T-17:SS	0.2820337971	-0.340481578	0.90454917	0.9533422
17:T-17:SS	0.2554416947	-0.367073680	0.87795707	0.9803829
11:TT-17:SS	-0.0720329212	-0.694548296	0.55048245	1.0000000
14:TT-17:SS	0.0203342814	-0.602181094	0.64284966	1.0000000
17:TT-17:SS	-0.1000547873	-0.722570162	0.52246059	0.9999999
14:T-11:T	0.1793940846	-0.443121290	0.80190946	0.9995969
17:T-11:T	0.1528019823	-0.469713393	0.77531736	0.9999503
11:TT-11:T	-0.1746726337	-0.797188009	0.44784274	0.9997119

***Landsburgia quercifolia* after 42 days**

Temperature x light/sediment treatments

Factors	Difference	Lower	Upper	p-value
14:TT-11:T	-0.0823054311	-0.704820806	0.54020994	1.0000000
17:TT-11:T	-0.2026944998	-0.825209875	0.41982088	0.9982497
17:T-14:T	-0.0265921024	-0.649107477	0.59592327	1.0000000
11:TT-14:T	-0.3540667184	-0.976582093	0.26844866	0.7778282
14:TT-14:T	-0.2616995157	-0.884214891	0.36081586	0.9755139
17:TT-14:T	-0.3820885844	-1.004603959	0.24042679	0.6737018
11:TT-17:T	-0.3274746160	-0.949989991	0.29504076	0.8606147
14:TT-17:T	-0.2351074133	-0.857622788	0.38740796	0.9912434
17:TT-17:T	-0.3554964820	-0.978011857	0.26701889	0.7728695
14:TT-11:TT	0.0923672027	-0.530148172	0.71488258	1.0000000
17:TT-11:TT	-0.0280218661	-0.650537241	0.59449351	1.0000000
17:TT-14:TT	-0.1203890687	-0.742904444	0.50212631	0.9999983

Durvillaea antarctica after 42 days

Temperature:

Factors	Difference	Lower	Upper	p-value
14-11	-0.13440020	-0.29448893	0.02568853	0.1117665
17-11	0.03261418	-0.15888944	0.22411780	0.9054955
17-14	0.16701438	-0.02245071	0.35647947	0.0913096

Light/sediment treatments:

Factors	Difference	Lower	Upper	p-value
HL-C	0.36808755	0.08356312	0.65261198	0.0061959
S-C	-0.22537910	-0.51988987	0.06913167	0.2077896
SS-C	-0.42953223	-0.72404300	-0.13502146	0.0017900 **
T-C	-0.27441303	-0.58173454	0.03290848	0.0994017
TT-C	-0.66644344	-0.97376496	-0.35912193	0.0000085 ***
S-HL	-0.59346665	-0.88797741	-0.29895588	0.0000262 ***
SS-HL	-0.79761978	-1.09213054	-0.50310901	0.0000002 ***
T-HL	-0.64250058	-0.94982209	-0.33517907	0.0000150 ***
TT-HL	-1.03453099	-1.34185250	-0.72720948	0.0000000 ***
SS-S	-0.20415313	-0.50832254	0.10001628	0.3326392
T-S	-0.04903393	-0.36562350	0.26755563	0.9964854
TT-S	-0.44106435	-0.75765391	-0.12447478	0.0029371 **
T-SS	0.15511920	-0.16147037	0.47170876	0.6584535
TT-SS	-0.23691122	-0.55350078	0.07967835	0.2273060
TT-T	-0.39203041	-0.72057093	-0.06348990	0.0129666

Temperature x light/sediment:

Factors	Difference	Lower	Upper	p-value
14:C-11:C	0.183349609	-0.400414234	0.7671134515	0.9977928
17:C-11:C	0.203692290	-0.448975528	0.8563601078	0.9979435
11:HL-11:C	0.911907336	0.259239518	1.5645751538	0.0014330 **
14:HL-11:C	0.310850901	-0.272912942	0.8946147443	0.8089855
17:HL-11:C	0.392793528	-0.190970315	0.9765573710	0.4797079
11:S-11:C	0.072220917	-0.511542926	0.6559847599	1.0000000

Temperature x light/sediment:

Factors	Difference	Lower	Upper	<i>p</i> -value
14:S-11:C	-0.224865051	-0.808628894	0.3588987915	0.9824953
17:S-11:C	-0.356827771	-1.182394515	0.4687389731	0.9532321
11:SS-11:C	-0.225218859	-0.808982702	0.3585449835	0.9822421
14:SS-11:C	-0.408261989	-0.992025832	0.1755018536	0.4186599
17:SS-11:C	-0.343389537	-1.168956281	0.4821772066	0.9657577
11:T-11:C	0.180544635	-0.472123183	0.8332124530	0.9994959
14:T-11:C	-0.347761753	-0.931525596	0.2360020901	0.6675353
17:T-11:C	-0.363314398	-1.188881142	0.4622523460	0.9461643
11:TT-11:C	-0.636755836	-1.220519679	-0.0529919929	0.0230471 *
14:TT-11:C	-0.510309143	-1.162976961	0.1423586746	0.2568626
17:TT-11:C	-0.332406860	-1.157973604	0.4931598835	0.9740272
17:C-14:C	0.020342681	-0.632325136	0.6730104992	1.0000000
11:HL-14:C	0.728557727	0.075889910	1.3812255452	0.0184288 *
14:HL-14:C	0.127501293	-0.456262550	0.7112651357	0.9999764
17:HL-14:C	0.209443919	-0.374319923	0.7932077624	0.9910881
11:S-14:C	-0.111128692	-0.694892534	0.4726351513	0.9999966
14:S-14:C	-0.408214660	-0.991978503	0.1755491829	0.4188412
17:S-14:C	-0.540177379	-1.365744123	0.2853893645	0.5241857
11:SS-14:C	-0.408568468	-0.992332311	0.1751953749	0.4174868
14:SS-14:C	-0.591611598	-1.175375441	-0.0078477550	0.0446924 *
17:SS-14:C	-0.526739146	-1.352305890	0.2988275980	0.5639420
11:T-14:C	-0.002804973	-0.655472791	0.6498628444	1.0000000
14:T-14:C	-0.531111361	-1.114875204	0.0526524816	0.1031646
17:T-14:C	-0.546664006	-1.372230750	0.2789027374	0.5052125
11:TT-14:C	-0.820105444	-1.403869287	-0.2363416014	0.0013352 **
14:TT-14:C	-0.693658752	-1.346326570	-0.0409909340	0.0293730 *
17:TT-14:C	-0.515756469	-1.341323213	0.3098102749	0.5966622
11:HL-17:C	0.708215046	-0.006746727	1.4231768187	0.0540659 .
14:HL-17:C	0.107158611	-0.545509206	0.7598264291	0.9999996

Temperature x light/sediment:

<u>Factors</u>	<u>Difference</u>	<u>Lower</u>	<u>Upper</u>	<u>p-value</u>	
17:HL-17:C	0.189101238	-0.463566580	0.8417690558	0.9991231	
11:S-17:C	-0.131471373	-0.784139191	0.5211964448	0.9999924	
14:S-17:C	-0.428557341	-1.081225159	0.2241104763	0.5185822	
17:S-17:C	-0.560520061	-1.436165825	0.3151257035	0.5588166	
11:SS-17:C	-0.428911149	-1.081578967	0.2237566683	0.5172710	
14:SS-17:C	-0.611954279	-1.264622097	0.0407135384	0.0829982	
17:SS-17:C	-0.547081827	-1.422727592	0.3285639370	0.5965512	
11:T-17:C	-0.023147655	-0.738109427	0.6918141179	1.0000000	
14:T-17:C	-0.551454043	-1.204121861	0.1012137750	0.1671810	
17:T-17:C	-0.567006688	-1.442652452	0.3086390765	0.5406880	
11:TT-17:C	-0.840448126	-1.493115944	-0.1877803080	0.0039255	**
14:TT-17:C	-0.714001433	-1.428963206	0.0009603395	0.0505611	.
17:TT-17:C	-0.536099150	-1.411744915	0.3395466139	0.6273679	
14:HL-11:HL	-0.601056435	-1.253724252	0.0516113832	0.0946401	
17:HL-11:HL	-0.519113808	-1.171781626	0.1335540098	0.2351799	
11:S-11:HL	-0.839686419	-1.492354237	-0.1870186012	0.0039677	**
14:S-11:HL	-1.136772387	-1.789440205	-0.4841045697	0.0000615	***
17:S-11:HL	-1.268735107	-2.144380871	-0.3930893424	0.0008892	***
11:SS-11:HL	-1.137126195	-1.789794013	-0.4844583777	0.0000612	***
14:SS-11:HL	-1.320169325	-1.972837143	-0.6675015076	0.0000053	***
17:SS-11:HL	-1.255296873	-2.130942638	-0.3796511090	0.0010245	**
11:T-11:HL	-0.731362701	-1.446324473	-0.0164009280	0.0412628	*
14:T-11:HL	-1.259669089	-1.912336907	-0.6070012710	0.0000117	***
17:T-11:HL	-1.275221734	-2.150867498	-0.3995759695	0.0008305	***
11:TT-11:HL	-1.548663172	-2.201330990	-0.8959953540	0.0000003	***
14:TT-11:HL	-1.422216479	-2.137178252	-0.7072547065	0.0000070	***
17:TT-11:HL	-1.244314196	-2.119959961	-0.3686684321	0.0011502	**
17:HL-14:HL	0.081942627	-0.501821216	0.6657064696	1.0000000	
11:S-14:HL	-0.238629984	-0.822393827	0.3451338585	0.9704200	

Temperature x light/sediment:

Factors	Difference	Lower	Upper	<i>p</i> -value
14:S-14:HL	-0.535715953	-1.119479796	0.0480478901	0.0970506
17:S-14:HL	-0.667678672	-1.493245416	0.1578880717	0.2150371
11:SS-14:HL	-0.536069761	-1.119833604	0.0476940821	0.0965941
14:SS-14:HL	-0.719112891	-1.302876734	-0.1353490478	0.0065371 **
17:SS-14:HL	-0.654240439	-1.479807183	0.1713263052	0.2397208
11:T-14:HL	-0.130306266	-0.782974084	0.5223615516	0.9999933
14:T-14:HL	-0.658612654	-1.242376497	-0.0748488112	0.0165842 *
17:T-14:HL	-0.674165299	-1.499732043	0.1514014446	0.2038330
11:TT-14:HL	-0.947606737	-1.531370580	-0.3638428942	0.0001795 ***
14:TT-14:HL	-0.821160045	-1.473827862	-0.1684922268	0.0051441 **
17:TT-14:HL	-0.643257762	-1.468824506	0.1823089821	0.2613869
11:S-17:HL	-0.320572611	-0.904336454	0.2631912319	0.7744754
14:S-17:HL	-0.617658579	-1.201422422	-0.0338947366	0.0305965 *
17:S-17:HL	-0.749621299	-1.575188043	0.0759454450	0.1046035
11:SS-17:HL	-0.618012388	-1.201776230	-0.0342485446	0.0304375 *
14:SS-17:HL	-0.801055517	-1.384819360	-0.2172916745	0.0018042 **
17:SS-17:HL	-0.736183065	-1.561749809	0.0893836785	0.1184467
11:T-17:HL	-0.212248893	-0.864916711	0.4404189250	0.9967702
14:T-17:HL	-0.740555281	-1.324319124	-0.1567914379	0.0046766 **
17:T-17:HL	-0.756107926	-1.581674670	0.0694588179	0.0984383
11:TT-17:HL	-1.029549364	-1.613313207	-0.4457855209	0.0000506 ***
14:TT-17:HL	-0.903102671	-1.555770489	-0.2504348535	0.0016229 **
17:TT-17:HL	-0.725200388	-1.550767132	0.1003663554	0.1308959
14:S-11:S	-0.297085968	-0.880849811	0.2866778745	0.8532649
17:S-11:S	-0.429048688	-1.254615432	0.3965180561	0.8337241
11:SS-11:S	-0.297439776	-0.881203619	0.2863240664	0.8522006
14:SS-11:S	-0.480482906	-1.064246749	0.1032809365	0.1949511
17:SS-11:S	-0.415610454	-1.241177198	0.4099562895	0.8627200
11:T-11:S	0.108323718	-0.544344100	0.7609915360	0.9999995

Temperature x light/sediment:

Factors	Difference	Lower	Upper	<i>p</i> -value
14:T-11:S	-0.419982670	-1.003746513	0.1637811731	0.3749706
17:T-11:S	-0.435535315	-1.261102059	0.3900314290	0.8187225
11:TT-11:S	-0.708976753	-1.292740596	-0.1252129099	0.0076528 **
14:TT-11:S	-0.582530060	-1.235197878	0.0701377575	0.1177257
17:TT-11:S	-0.404627777	-1.230194521	0.4209389664	0.8842006
17:S-14:S	-0.131962719	-0.957529463	0.6936040245	0.9999997
11:SS-14:S	-0.000353808	-0.584117651	0.5834100349	1.0000000
14:SS-14:S	-0.183396938	-0.767160781	0.4003669050	0.9977865
17:SS-14:S	-0.118524486	-0.944091230	0.7070422580	0.9999999
11:T-14:S	0.405409687	-0.247258131	1.0580775045	0.6054518
14:T-14:S	-0.122896701	-0.706660544	0.4608671416	0.9999858
17:T-14:S	-0.138449346	-0.964016090	0.6871173974	0.9999995
11:TT-14:S	-0.411890784	-0.995654627	0.1718730586	0.4048722
14:TT-14:S	-0.285444092	-0.938111910	0.3672237260	0.9486972
17:TT-14:S	-0.107541809	-0.933108553	0.7180249349	1.0000000
11:SS-17:S	0.131608911	-0.693957833	0.9571756552	0.9999998
14:SS-17:S	-0.051434219	-0.877000962	0.7741325253	1.0000000
17:SS-17:S	0.013438233	-0.997670402	1.0245468690	1.0000000
11:T-17:S	0.537372406	-0.338273358	1.4130181704	0.6238035
14:T-17:S	0.009066018	-0.816500726	0.8346327619	1.0000000
17:T-17:S	-0.006486627	-1.017595263	1.0046220084	1.0000000
11:TT-17:S	-0.279928065	-1.105494809	0.5456386789	0.9949722
14:TT-17:S	-0.153481372	-1.029127137	0.7221643919	0.9999990
17:TT-17:S	0.024420910	-0.986687725	1.0355295459	1.0000000
14:SS-11:SS	-0.183043130	-0.766806973	0.4007207130	0.9978335
17:SS-11:SS	-0.118170678	-0.943737422	0.7073960660	1.0000000
11:T-11:SS	0.405763495	-0.246904323	1.0584313125	0.6041184
14:T-11:SS	-0.122542893	-0.706306736	0.4612209496	0.9999864
17:T-11:SS	-0.138095538	-0.963662282	0.6874712054	0.9999995

Temperature x light/sediment:

Factors	Difference	Lower	Upper	<i>p</i> -value
11:TT-11:SS	-0.411536976	-0.995300819	0.1722268666	0.4062066
14:TT-11:SS	-0.285090284	-0.937758102	0.3675775340	0.9491904
17:TT-11:SS	-0.107188001	-0.932754745	0.7183787429	1.0000000
17:SS-14:SS	0.064872452	-0.760694292	0.8904391959	1.0000000
11:T-14:SS	0.588806625	-0.063861193	1.2414744424	0.1094125
14:T-14:SS	0.060500237	-0.523263606	0.6442640795	1.0000000
17:T-14:SS	0.044947591	-0.780619152	0.8705143353	1.0000000
11:TT-14:SS	-0.228493846	-0.812257689	0.3552699965	0.9797638
14:TT-14:SS	-0.102047154	-0.754714972	0.5506206639	0.9999998
17:TT-14:SS	0.075855129	-0.749711615	0.9014218728	1.0000000
11:T-17:SS	0.523934173	-0.351711592	1.3995799369	0.6612153
14:T-17:SS	-0.004372215	-0.829938959	0.8211945284	1.0000000
17:T-17:SS	-0.019924861	-1.031033496	0.9911837750	1.0000000
11:TT-17:SS	-0.293366298	-1.118933042	0.5322004454	0.9918971
14:TT-17:SS	-0.166919606	-1.042565370	0.7087261585	0.9999965
17:TT-17:SS	0.010982677	-1.000125959	1.0220913124	1.0000000
14:T-11:T	-0.528306388	-1.180974206	0.1243614297	0.2140132
17:T-11:T	-0.543859033	-1.419504797	0.3317867312	0.6056067
11:TT-11:T	-0.817300471	-1.469968289	-0.1646326533	0.0054293 **
14:TT-11:T	-0.690853778	-1.405815551	0.0241079942	0.0659566
17:TT-11:T	-0.512951496	-1.388597260	0.3626942687	0.6912852
17:T-14:T	-0.015552645	-0.841119389	0.8100140988	1.0000000
11:TT-14:T	-0.288994083	-0.872757926	0.2947697599	0.8764770
14:TT-14:T	-0.162547390	-0.815215208	0.4901204273	0.9998647
17:TT-14:T	0.015354892	-0.810211851	0.8409216362	1.0000000
11:TT-17:T	-0.273441438	-1.099008182	0.5521253060	0.9960703
14:TT-17:T	-0.146994745	-1.022640510	0.7286510190	0.9999995
17:TT-17:T	0.030907537	-0.980201098	1.0420161730	1.0000000
14:TT-11:TT	0.126446693	-0.526221125	0.7791145103	0.9999956

Temperature x light/sediment:

<u>Factors</u>	<u>Difference</u>	<u>Lower</u>	<u>Upper</u>	<u>p-value</u>
17:TT-11:TT	0.304348975	-0.521217768	1.1299157192	0.9883962
17:TT-14:TT	0.177902283	-0.697743482	1.0535480472	0.9999914

***Lessonia variegata* after 42 days**

Temperature:

Factors	Difference	Lower	Upper	p-value
14-11	-0.2915061	-0.4836738	-0.09933836	0.0020064 **
17-11	-0.8083202	-1.0004879	-0.61615243	0.0000000 ***
17-14	-0.5168141	-0.7062167	-0.32741148	0.0000003 ***

Light/sediment treatments:

Factors	Difference	Lower	Upper	p-value
HL-C	-0.2807551	-0.620708927	0.059198750	0.1552255
S-C	-0.1049521	-0.444905898	0.235001780	0.9359035
SS-C	-0.4823867	-0.822340526	-0.142432848	0.0018009 **
T-C	-0.1443781	-0.484331897	0.195575781	0.7937962
TT-C	-0.8145953	-1.154549180	-0.474641502	0.0000003 ***
S-HL	0.1758030	-0.154000638	0.505606696	0.6000648
SS-HL	-0.2016316	-0.531435266	0.128172069	0.4532193
T-HL	0.1363770	-0.193426637	0.466180698	0.8112152
TT-HL	-0.5338403	-0.863643920	-0.204036586	0.0003134 ***
SS-S	-0.3774346	-0.707238295	-0.047630961	0.0171457 *
T-S	-0.0394260	-0.369229666	0.290377669	0.9991323
TT-S	-0.7096433	-1.039446949	-0.379839615	0.0000026 ***
T-SS	0.3380086	0.008204962	0.667812296	0.0418901 *
TT-SS	-0.3322087	-0.662012321	-0.002404987	0.0474890 *
TT-T	-0.6702173	-1.000020950	-0.340413616	0.0000075 ***

Temperature x light/sediment treatments:

Factors	Difference	Lower	Upper	p-value
14:C-11:C	-1.143672104	-1.940173e+00	-0.347171343	0.0005732 ***
17:C-11:C	-1.296144079	-2.092645e+00	-0.499643318	0.0000693 ***
11:HL-11:C	-1.008038685	-1.804539e+00	-0.211537924	0.0035887 **
14:HL-11:C	-0.915794209	-1.712295e+00	-0.119293448	0.0118595 *
17:HL-11:C	-1.525747294	-2.322248e+00	-0.729246533	0.0000029 ***
11:S-11:C	-0.583745088	-1.380246e+00	0.212755673	0.3831932

Temperature x light/sediment treatments:

Factors	Difference	Lower	Upper	p-value	
14:S-11:C	-0.805240358	-1.601741e+00	-0.008739597	0.0452397	*
17:S-11:C	-1.533185654	-2.329686e+00	-0.736684894	0.0000026	***
11:SS-11:C	-0.826993759	-1.623495e+00	-0.030492998	0.0351220	*
14:SS-11:C	-1.317491732	-2.113992e+00	-0.520990971	0.0000515	***
17:SS-11:C	-1.909989492	-2.706490e+00	-1.113488731	0.0000000	***
11:T-11:C	-0.615930837	-1.412432e+00	0.180569924	0.2991859	
14:T-11:C	-0.836219231	-1.632720e+00	-0.039718471	0.0314936	*
17:T-11:C	-1.588299027	-2.384800e+00	-0.791798266	0.0000012	***
11:TT-11:C	-1.570891503	-2.367392e+00	-0.774390743	0.0000015	***
14:TT-11:C	-1.607136451	-2.403637e+00	-0.810635690	0.0000009	***
17:TT-11:C	-1.873072991	-2.669574e+00	-1.076572231	0.0000000	***
17:C-14:C	-0.152471975	-8.648839e-01	0.559939964	0.9999927	
11:HL-14:C	0.135633419	-5.767785e-01	0.848045357	0.9999987	
14:HL-14:C	0.227877895	-4.845340e-01	0.940289834	0.9985758	
17:HL-14:C	-0.382075189	-1.094487e+00	0.330336749	0.8424994	
11:S-14:C	0.559927017	-1.524849e-01	1.272338955	0.2754100	
14:S-14:C	0.338431746	-3.739802e-01	1.050843685	0.9320691	
17:S-14:C	-0.389513550	-1.101925e+00	0.322898388	0.8228665	
11:SS-14:C	0.316678346	-3.957336e-01	1.029090284	0.9601617	
14:SS-14:C	-0.173819628	-8.862316e-01	0.538592310	0.9999542	
17:SS-14:C	-0.766317388	-1.478729e+00	-0.053905450	0.0246189	*
11:T-14:C	0.527741267	-1.846707e-01	1.240153205	0.3658649	
14:T-14:C	0.307452873	-4.049591e-01	1.019864811	0.9690848	
17:T-14:C	-0.444626923	-1.157039e+00	0.267785015	0.6482662	
11:TT-14:C	-0.427219399	-1.139631e+00	0.285192539	0.7076816	
14:TT-14:C	-0.463464346	-1.175876e+00	0.248947592	0.5820299	
17:TT-14:C	-0.729400887	-1.441813e+00	-0.016988949	0.0401794	*
11:HL-17:C	0.288105394	-4.243065e-01	1.000517332	0.9828834	
14:HL-17:C	0.380349870	-3.320621e-01	1.092761808	0.8468823	

Temperature x light/sediment treatments:

Factors	Difference	Lower	Upper	<i>p</i> -value
17:HL-17:C	-0.229603215	-9.420152e-01	0.482808723	0.9984451
11:S-17:C	0.712398991	-1.294711e-05	1.424810929	0.0500082
14:S-17:C	0.490903721	-2.215082e-01	1.203315659	0.4859388
17:S-17:C	-0.237041576	-9.494535e-01	0.475370362	0.9977583
11:SS-17:C	0.469150320	-2.432616e-01	1.181562258	0.5619364
14:SS-17:C	-0.021347654	-7.337596e-01	0.691064285	1.0000000
17:SS-17:C	-0.613845414	-1.326257e+00	0.098566525	0.1601455
11:T-17:C	0.680213242	-3.219870e-02	1.392625180	0.0746821
14:T-17:C	0.459924847	-2.524871e-01	1.172336785	0.5945392
17:T-17:C	-0.292154949	-1.004567e+00	0.420256990	0.9804915
11:TT-17:C	-0.274747425	-9.871594e-01	0.437664513	0.9891961
14:TT-17:C	-0.310992372	-1.023404e+00	0.401419566	0.9658561
17:TT-17:C	-0.576928913	-1.289341e+00	0.135483025	0.2341092
14:HL-11:HL	0.092244476	-6.201675e-01	0.804656414	1.0000000
17:HL-11:HL	-0.517708609	-1.230121e+00	0.194703330	0.3970619
11:S-11:HL	0.424293597	-2.881183e-01	1.136705536	0.7173798
14:S-11:HL	0.202798327	-5.096136e-01	0.915210266	0.9996543
17:S-11:HL	-0.525146969	-1.237559e+00	0.187264969	0.3738069
11:SS-11:HL	0.181044926	-5.313670e-01	0.893456865	0.9999208
14:SS-11:HL	-0.309453047	-1.021865e+00	0.402958891	0.9672893
17:SS-11:HL	-0.901950807	-1.614363e+00	-0.189538869	0.0035710 **
11:T-11:HL	0.392107848	-3.203041e-01	1.104519786	0.8157464
14:T-11:HL	0.171819454	-5.405925e-01	0.884231392	0.9999609
17:T-11:HL	-0.580260342	-1.292672e+00	0.132151596	0.2265578
11:TT-11:HL	-0.562852818	-1.275265e+00	0.149559120	0.2679745
14:TT-11:HL	-0.599097766	-1.311510e+00	0.113314173	0.1871652
17:TT-11:HL	-0.865034306	-1.577446e+00	-0.152622368	0.0061389 **
17:HL-14:HL	-0.609953085	-1.322365e+00	0.102458853	0.1669602
11:S-14:HL	0.332049121	-3.803628e-01	1.044461059	0.9413997

Temperature x light/sediment treatments:

Factors	Difference	Lower	Upper	p-value
14:S-14:HL	0.110553851	-6.018581e-01	0.822965789	0.9999999
17:S-14:HL	-0.617391446	-1.329803e+00	0.095020493	0.1541302
11:SS-14:HL	0.088800450	-6.236115e-01	0.801212388	1.0000000
14:SS-14:HL	-0.401697524	-1.114109e+00	0.310714415	0.7882772
17:SS-14:HL	-0.994195283	-1.706607e+00	-0.281783345	0.0008902 ***
11:T-14:HL	0.299863372	-4.125486e-01	1.012275310	0.9752379
14:T-14:HL	0.079574977	-6.328370e-01	0.791986915	1.0000000
17:T-14:HL	-0.672504818	-1.384917e+00	0.039907120	0.0819831
11:TT-14:HL	-0.655097295	-1.367509e+00	0.057314644	0.1007737
14:TT-14:HL	-0.691342242	-1.403754e+00	0.021069696	0.0651459
17:TT-14:HL	-0.957278783	-1.669691e+00	-0.244866844	0.0015599 **
11:S-17:HL	0.942002206	2.295903e-01	1.654414144	0.0019640 **
14:S-17:HL	0.720506936	8.094998e-03	1.432918874	0.0450782 *
17:S-17:HL	-0.007438361	-7.198503e-01	0.704973577	1.0000000
11:SS-17:HL	0.698753535	-1.365840e-02	1.411165473	0.0594075 .
14:SS-17:HL	0.208255561	-5.041564e-01	0.920667499	0.9995184
17:SS-17:HL	-0.384242199	-1.096654e+00	0.328169740	0.8369020
11:T-17:HL	0.909816457	1.974045e-01	1.622228395	0.0031778 **
14:T-17:HL	0.689528062	-2.288388e-02	1.401940000	0.0666231
17:T-17:HL	-0.062551734	-7.749637e-01	0.649860204	1.0000000
11:TT-17:HL	-0.045144210	-7.575561e-01	0.667267728	1.0000000
14:TT-17:HL	-0.081389157	-7.938011e-01	0.631022781	1.0000000
17:TT-17:HL	-0.347325698	-1.059738e+00	0.365086240	0.9174839
14:S-11:S	-0.221495270	-9.339072e-01	0.490916668	0.9989813
17:S-11:S	-0.949440567	-1.661853e+00	-0.237028629	0.0017559 **
11:SS-11:S	-0.243248671	-9.556606e-01	0.469163267	0.9970039
14:SS-11:S	-0.733746645	-1.446159e+00	-0.021334706	0.0379665 *
17:SS-11:S	-1.326244405	-2.038656e+00	-0.613832466	0.0000052 ***
11:T-11:S	-0.032185749	-7.445977e-01	0.680226189	1.0000000

Temperature x light/sediment treatments:

Factors	Difference	Lower	Upper	p-value	
14:T-11:S	-0.252474144	-9.648861e-01	0.459937794	0.9954985	
17:T-11:S	-1.004553940	-1.716966e+00	-0.292142001	0.0007598	***
11:TT-11:S	-0.987146416	-1.699558e+00	-0.274734478	0.0009912	***
14:TT-11:S	-1.023391363	-1.735803e+00	-0.310979425	0.0005691	***
17:TT-11:S	-1.289327904	-2.001740e+00	-0.576915966	0.0000092	***
17:S-14:S	-0.727945297	-1.440357e+00	-0.015533359	0.0409465	*
11:SS-14:S	-0.021753401	-7.341653e-01	0.690658537	1.0000000	
14:SS-14:S	-0.512251375	-1.224663e+00	0.200160564	0.4145543	
17:SS-14:S	-1.104749135	-1.817161e+00	-0.392337196	0.0001618	***
11:T-14:S	0.189309521	-5.231024e-01	0.901721459	0.9998571	
14:T-14:S	-0.030978874	-7.433908e-01	0.681433064	1.0000000	
17:T-14:S	-0.783058670	-1.495471e+00	-0.070646731	0.0195976	*
11:TT-14:S	-0.765651146	-1.478063e+00	-0.053239207	0.0248416	*
14:TT-14:S	-0.801896093	-1.514308e+00	-0.089484155	0.0151008	*
17:TT-14:S	-1.067832634	-1.780245e+00	-0.355420696	0.0002868	***
11:SS-17:S	0.706191896	-6.220042e-03	1.418603834	0.0541047	.
14:SS-17:S	0.215693922	-4.967180e-01	0.928105860	0.9992595	
17:SS-17:S	-0.376803838	-1.089216e+00	0.335608100	0.8556827	
11:T-17:S	0.917254818	2.048429e-01	1.629666756	0.0028449	**
14:T-17:S	0.696966423	-1.544552e-02	1.409378361	0.0607486	
17:T-17:S	-0.055113373	-7.675253e-01	0.657298565	1.0000000	
11:TT-17:S	-0.037705849	-7.501178e-01	0.674706089	1.0000000	
14:TT-17:S	-0.073950796	-7.863627e-01	0.638461142	1.0000000	
17:TT-17:S	-0.339887337	-1.052299e+00	0.372524601	0.9298094	
14:SS-11:SS	-0.490497974	-1.202910e+00	0.221913965	0.4873334	
17:SS-11:SS	-1.082995734	-1.795408e+00	-0.370583795	0.0002268	***
11:T-11:SS	0.211062922	-5.013490e-01	0.923474860	0.9994318	
14:T-11:SS	-0.009225473	-7.216374e-01	0.703186465	1.0000000	
17:T-11:SS	-0.761305269	-1.473717e+00	-0.048893330	0.0263408	*

Temperature x light/sediment treatments:

Factors	Difference	Lower	Upper	p-value	
11:TT-11:SS	-0.743897745	-1.456310e+00	-0.031485807	0.0332245	*
14:TT-11:SS	-0.780142692	-1.492555e+00	-0.067730754	0.0203970	*
17:TT-11:SS	-1.046079233	-1.758491e+00	-0.333667295	0.0004014	***
17:SS-14:SS	-0.592497760	-1.304910e+00	0.119914178	0.2003328	
11:T-14:SS	0.701560895	-1.085104e-02	1.413972834	0.0573541	.
14:T-14:SS	0.481272501	-2.311394e-01	1.193684439	0.5193228	
17:T-14:SS	-0.270807295	-9.832192e-01	0.441604643	0.9906505	
11:TT-14:SS	-0.253399771	-9.658117e-01	0.459012167	0.9953179	
14:TT-14:SS	-0.289644718	-1.002057e+00	0.422767220	0.9820026	
17:TT-14:SS	-0.555581259	-1.267993e+00	0.156830679	0.2867038	
11:T-17:SS	1.294058655	5.816467e-01	2.006470594	0.0000085	***
14:T-17:SS	1.073770261	3.613583e-01	1.786182199	0.0002616	***
17:T-17:SS	0.321690465	-3.907215e-01	1.034102403	0.9545995	
11:TT-17:SS	0.339097989	-3.733139e-01	1.051509927	0.9310409	
14:TT-17:SS	0.302853042	-4.095589e-01	1.015264980	0.9729355	
17:TT-17:SS	0.036916501	-6.754954e-01	0.749328439	1.0000000	
14:T-11:T	-0.220288395	-9.327003e-01	0.492123544	0.9990456	
17:T-11:T	-0.972368190	-1.684780e+00	-0.259956252	0.0012411	**
11:TT-11:T	-0.954960667	-1.667373e+00	-0.242548728	0.0016155	**
14:TT-11:T	-0.991205614	-1.703618e+00	-0.278793676	0.0009317	***
17:TT-11:T	-1.257142155	-1.969554e+00	-0.544730216	0.0000151	***
17:T-14:T	-0.752079796	-1.464492e+00	-0.039667858	0.0298051	*
11:TT-14:T	-0.734672272	-1.447084e+00	-0.022260334	0.0375098	*
14:TT-14:T	-0.770917219	-1.483329e+00	-0.058505281	0.0231313	*
17:TT-14:T	-1.036853760	-1.749266e+00	-0.324441822	0.0004627	***
11:TT-17:T	0.017407524	-6.950044e-01	0.729819462	1.0000000	
14:TT-17:T	-0.018837423	-7.312494e-01	0.693574515	1.0000000	
17:TT-17:T	-0.284773964	-9.971859e-01	0.427637974	0.9846750	
14:TT-11:TT	-0.036244947	-7.486569e-01	0.676166991	1.0000000	

Temperature x light/sediment treatments:

<u>Factors</u>	<u>Difference</u>	<u>Lower</u>	<u>Upper</u>	<u>p-value</u>
17:TT-11:TT	-0.302181488	-1.014593e+00	0.410230450	0.9734662
17:TT-14:TT	-0.265936541	-9.783485e-01	0.446475397	0.9922268

Landsburgia quercifolia after 100 days

Temperatures:

Factors	Difference	Lower	Upper	p-value
14-11	-0.0008693591	-0.16374176	0.1620030	0.9999059
17-11	0.0679825532	-0.09254624	0.2285113	0.5592906
17-14	0.0688519124	-0.09402049	0.2317243	0.5604297

Light/sediment treatments:

Factors	Difference	Lower	Upper	p-value
HL-C	-0.17479538	-0.46292438	0.11333362	0.4617709
S-C	-0.09444350	-0.38257250	0.19368550	0.9188040
SS-C	-0.41458653	-0.70271553	-0.12645753	0.0015174 **
T-C	-0.04304115	-0.33117014	0.24508785	0.9974736
TT-C	-0.65326754	-0.94139653	-0.36513854	0.0000009 ***
S-HL	0.08035188	-0.19917431	0.35987807	0.9520470
SS-HL	-0.23979115	-0.51931734	0.03973504	0.1280154
T-HL	0.13175423	-0.14777196	0.41128042	0.7147609
TT-HL	-0.47847216	-0.75799835	-0.19894597	0.0001364 ***
SS-S	-0.32014303	-0.59966922	-0.04061684	0.0170287 *
T-S	0.05140235	-0.22812384	0.33092854	0.9933035
TT-S	-0.55882404	-0.83835023	-0.27929785	0.0000101 ***
T-SS	0.37154538	0.09201919	0.65107157	0.0038553 **
TT-SS	-0.23868101	-0.51820720	0.04084518	0.1311693
TT-T	-0.61022639	-0.88975258	-0.33070020	0.0000019

Temperature x Light/sediment treatments:

Factors	Difference	Lower	Upper	p-value
14:C-11:C	0.06593918	-0.6091377	0.741016028	1.0000000
17:C-11:C	0.24158818	-0.3622189	0.845395269	0.9845365
11:HL-11:C	-0.14923961	-0.7530467	0.454567480	0.9999455
14:HL-11:C	-0.11321884	-0.7170259	0.490588256	0.9999989
17:HL-11:C	0.05059824	-0.5532089	0.654405331	1.0000000
11:S-11:C	0.17857827	-0.4252288	0.782385358	0.9994438

Temperature x Light/sediment treatments:

<u>Factors</u>	<u>Difference</u>	<u>Lower</u>	<u>Upper</u>	<u>p-value</u>
14:S-11:C	-0.06061017	-0.6644173	0.543196926	1.0000000
17:S-11:C	-0.08877267	-0.6925798	0.515034426	1.0000000
11:SS-11:C	-0.30929481	-0.9131019	0.294512279	0.8830598
14:SS-11:C	-0.33767562	-0.9414827	0.266131475	0.7978852
17:SS-11:C	-0.28426323	-0.8880703	0.319543861	0.9366284
11:T-11:C	-0.03032229	-0.6341294	0.573484807	1.0000000
14:T-11:C	0.12921584	-0.4745913	0.733022930	0.9999927
17:T-11:C	0.08450893	-0.5192982	0.688316026	1.0000000
11:TT-11:C	-0.60507045	-1.2088775	-0.001263355	0.0490589 *
14:TT-11:C	-0.53109321	-1.1349003	0.072713881	0.1393193
17:TT-11:C	-0.51111302	-1.1149201	0.092694068	0.1796109
17:C-14:C	0.17564900	-0.4994279	0.850725853	0.9998916
11:HL-14:C	-0.21517879	-0.8902556	0.459898064	0.9986331
14:HL-14:C	-0.17915801	-0.8542349	0.495918839	0.9998595
17:HL-14:C	-0.01534094	-0.6904178	0.659735915	1.0000000
11:S-14:C	0.11263909	-0.5624378	0.787715941	0.9999998
14:S-14:C	-0.12654934	-0.8016262	0.548527509	0.9999989
17:S-14:C	-0.15471184	-0.8297887	0.520365009	0.9999807
11:SS-14:C	-0.37523399	-1.0503108	0.299842863	0.8048499
14:SS-14:C	-0.40361479	-1.0786916	0.271462058	0.7119456
17:SS-14:C	-0.35020241	-1.0252793	0.324874445	0.8727471
11:T-14:C	-0.09626146	-0.7713383	0.578815391	1.0000000
14:T-14:C	0.06327666	-0.6118002	0.738353513	1.0000000
17:T-14:C	0.01856976	-0.6565071	0.693646610	1.0000000
11:TT-14:C	-0.67100962	-1.3460865	0.004067228	0.0528013 .
14:TT-14:C	-0.59703239	-1.2721092	0.078044464	0.1341138
17:TT-14:C	-0.57705220	-1.2521291	0.098024651	0.1687240
11:HL-17:C	-0.39082779	-0.9946349	0.212979304	0.5902996
14:HL-17:C	-0.35480701	-0.9586141	0.249000079	0.7358702
17:HL-17:C	-0.19098994	-0.7947970	0.412817155	0.9987509

Temperature x Light/sediment treatments:

<u>Factors</u>	<u>Difference</u>	<u>Lower</u>	<u>Upper</u>	<u>p-value</u>	
11:S-17:C	-0.06300991	-0.6668170	0.540797181	1.0000000	
14:S-17:C	-0.30219834	-0.9060054	0.301608749	0.9003606	
17:S-17:C	-0.33036084	-0.9341679	0.273446249	0.8221367	
11:SS-17:C	-0.55088299	-1.1546901	0.052924103	0.1069651	
14:SS-17:C	-0.57926379	-1.1830709	0.024543298	0.0717862	
17:SS-17:C	-0.52585141	-1.1296585	0.077955684	0.1491126	
11:T-17:C	-0.27191046	-0.8757176	0.331896630	0.9556051	
14:T-17:C	-0.11237234	-0.7161794	0.491434753	0.9999990	
17:T-17:C	-0.15707924	-0.7608863	0.446727849	0.9998919	
11:TT-17:C	-0.84665862	-1.4504657	-0.242851532	0.0008279	***
14:TT-17:C	-0.77268139	-1.3764885	-0.168874296	0.0030919	**
17:TT-17:C	-0.75270120	-1.3565083	-0.148894109	0.0043818	**
14:HL-11:HL	0.03602078	-0.5677863	0.639827868	1.0000000	
17:HL-11:HL	0.19983785	-0.4039692	0.803644943	0.9978899	
11:S-11:HL	0.32781788	-0.2759892	0.931624970	0.8302144	
14:S-11:HL	0.08862945	-0.5151776	0.692436538	1.0000000	
17:S-11:HL	0.06046695	-0.5433401	0.664274038	1.0000000	
11:SS-11:HL	-0.16005520	-0.7638623	0.443751891	0.9998616	
14:SS-11:HL	-0.18843601	-0.7922431	0.415371087	0.9989347	
17:SS-11:HL	-0.13502362	-0.7388307	0.468783473	0.9999863	
11:T-11:HL	0.11891733	-0.4848898	0.722724419	0.9999978	
14:T-11:HL	0.27845545	-0.3253516	0.882262542	0.9461352	
17:T-11:HL	0.23374855	-0.3700585	0.837555638	0.9887817	
11:TT-11:HL	-0.45583084	-1.0596379	0.147976257	0.3358915	
14:TT-11:HL	-0.38185360	-0.9856607	0.221953492	0.6276133	
17:TT-11:HL	-0.36187341	-0.9656805	0.241933680	0.7085374	
17:HL-14:HL	0.16381708	-0.4399900	0.767624168	0.9998128	
11:S-14:HL	0.29179710	-0.3120100	0.895604194	0.9226860	
14:S-14:HL	0.05260867	-0.5511984	0.656415762	1.0000000	
17:S-14:HL	0.02444617	-0.5793609	0.628253262	1.0000000	

Temperature x Light/sediment treatments:

<u>Factors</u>	<u>Difference</u>	<u>Lower</u>	<u>Upper</u>	<u>p-value</u>
11:SS-14:HL	-0.19607598	-0.7998831	0.407731116	0.9983030
14:SS-14:HL	-0.22445678	-0.8282639	0.379350312	0.9925534
17:SS-14:HL	-0.17104439	-0.7748515	0.432762698	0.9996750
11:T-14:HL	0.08289655	-0.5209105	0.686703644	1.0000000
14:T-14:HL	0.24243467	-0.3613724	0.846241766	0.9840119
17:T-14:HL	0.19772777	-0.4060793	0.801534863	0.9981310
11:TT-14:HL	-0.49185161	-1.0956587	0.111955481	0.2264255
14:TT-14:HL	-0.41787438	-1.0216815	0.185932717	0.4786289
17:TT-14:HL	-0.39789419	-1.0017013	0.205912905	0.5608354
11:S-17:HL	0.12798003	-0.4758271	0.731787119	0.9999936
14:S-17:HL	-0.11120841	-0.7150155	0.492598687	0.9999992
17:S-17:HL	-0.13937091	-0.7431780	0.464436187	0.9999787
11:SS-17:HL	-0.35989305	-0.9637001	0.243914041	0.7162835
14:SS-17:HL	-0.38827386	-0.9920809	0.215533236	0.6009433
17:SS-17:HL	-0.33486147	-0.9386686	0.268945622	0.8073889
11:T-17:HL	-0.08092052	-0.6847276	0.522886568	1.0000000
14:T-17:HL	0.07861760	-0.5251895	0.682424691	1.0000000
17:T-17:HL	0.03391069	-0.5698964	0.637717787	1.0000000
11:TT-17:HL	-0.65566869	-1.2594758	-0.051861594	0.0223023 *
14:TT-17:HL	-0.58169145	-1.1854985	0.022115642	0.0693092
17:TT-17:HL	-0.56171126	-1.1655184	0.042095829	0.0921085
14:S-11:S	-0.23918843	-0.8429955	0.364618660	0.9859510
17:S-11:S	-0.26735093	-0.8711580	0.336456160	0.9614582
11:SS-11:S	-0.48787308	-1.0916802	0.115934014	0.2371126
14:SS-11:S	-0.51625388	-1.1200610	0.087553210	0.1684644
17:SS-11:S	-0.46284150	-1.0666486	0.140965596	0.3123890
11:T-11:S	-0.20890055	-0.8127076	0.394906542	0.9965345
14:T-11:S	-0.04936243	-0.6531695	0.554444665	1.0000000
17:T-11:S	-0.09406933	-0.6978764	0.509737761	0.9999999
11:TT-11:S	-0.78364871	-1.3874558	-0.179841621	0.0025495

Temperature x Light/sediment treatments:

<u>Factors</u>	<u>Difference</u>	<u>Lower</u>	<u>Upper</u>	<u>p-value</u>
14:TT-11:S	-0.70967148	-1.3134786	-0.105864385	0.0091555
17:TT-11:S	-0.68969129	-1.2934984	-0.085884197	0.0127917
17:S-14:S	-0.02816250	-0.6319696	0.575644592	1.0000000
11:SS-14:S	-0.24868465	-0.8524917	0.355122446	0.9796974
14:SS-14:S	-0.27706545	-0.8808725	0.326741642	0.9482547
17:SS-14:S	-0.22365306	-0.8274602	0.380154028	0.9928240
11:T-14:S	0.03028788	-0.5735192	0.634094974	1.0000000
14:T-14:S	0.18982600	-0.4139811	0.793633097	0.9988378
17:T-14:S	0.14511910	-0.4586880	0.748926193	0.9999627
11:TT-14:S	-0.54446028	-1.1482674	0.059346811	0.1166972
14:TT-14:S	-0.47048305	-1.0742901	0.133324047	0.2879534
17:TT-14:S	-0.45050286	-1.0543100	0.153304235	0.3544202
11:SS-17:S	-0.22052215	-0.8243292	0.383284946	0.9938034
14:SS-17:S	-0.24890295	-0.8527100	0.354904142	0.9795320
17:SS-17:S	-0.19549056	-0.7992977	0.408316528	0.9983607
11:T-17:S	0.05845038	-0.5453567	0.662257474	1.0000000
14:T-17:S	0.21798850	-0.3858186	0.821795597	0.9945135
17:T-17:S	0.17328160	-0.4305255	0.777088693	0.9996173
11:TT-17:S	-0.51629778	-1.1201049	0.087509312	0.1683716
14:TT-17:S	-0.44232055	-1.0461276	0.161486547	0.3839361
17:TT-17:S	-0.42234036	-1.0261475	0.181466735	0.4607177
14:SS-11:SS	-0.02838080	-0.6321879	0.575426288	1.0000000
17:SS-11:SS	0.02503158	-0.5787755	0.628838674	1.0000000
11:T-11:SS	0.27897253	-0.3248346	0.882779620	0.9453316
14:T-11:SS	0.43851065	-0.1652964	1.042317743	0.3980920
17:T-11:SS	0.39380375	-0.2100033	0.997610839	0.5778882
11:TT-11:SS	-0.29577563	-0.8995827	0.308031458	0.9145716
14:TT-11:SS	-0.22179840	-0.8256055	0.382008694	0.9934183
17:TT-11:SS	-0.20181821	-0.8056253	0.401988881	0.9976402
17:SS-14:SS	0.05341239	-0.5503947	0.657219479	1.0000000

Temperature x Light/sediment treatments:

<u>Factors</u>	<u>Difference</u>	<u>Lower</u>	<u>Upper</u>	<u>p-value</u>
11:T-14:SS	0.30735333	-0.2964538	0.911160425	0.8879592
14:T-14:SS	0.46689145	-0.1369156	1.070698547	0.2992821
17:T-14:SS	0.42218455	-0.1816225	1.025991644	0.4613387
11:TT-14:SS	-0.26739483	-0.8712019	0.336412262	0.9614046
14:TT-14:SS	-0.19341759	-0.7972247	0.410389498	0.9985517
17:TT-14:SS	-0.17343741	-0.7772445	0.430369686	0.9996129
11:T-17:SS	0.25394095	-0.3498661	0.857748038	0.9754212
14:T-17:SS	0.41347907	-0.1903280	1.017286161	0.4964618
17:T-17:SS	0.36877216	-0.2350349	0.972579257	0.6810991
11:TT-17:SS	-0.32080722	-0.9246143	0.282999876	0.8514842
14:TT-17:SS	-0.24682998	-0.8506371	0.356977112	0.9810614
17:TT-17:SS	-0.22684979	-0.8306569	0.376957299	0.9916981
14:T-11:T	0.15953812	-0.4442690	0.763345215	0.9998674
17:T-11:T	0.11483122	-0.4889759	0.718638311	0.9999987
11:TT-11:T	-0.57474816	-1.1785553	0.029058930	0.0766005
14:TT-11:T	-0.50077093	-1.1045780	0.103036166	0.2037407
17:TT-11:T	-0.48079074	-1.0845978	0.123016353	0.2570089
17:T-14:T	-0.04470690	-0.6485140	0.559100189	1.0000000
11:TT-14:T	-0.73428629	-1.3380934	-0.130479193	0.0060217
14:TT-14:T	-0.66030905	-1.2641161	-0.056501957	0.0206967
17:TT-14:T	-0.64032886	-1.2441360	-0.036521769	0.0284733
11:TT-17:T	-0.68957938	-1.2933865	-0.085772289	0.0128155
14:TT-17:T	-0.61560215	-1.2194092	-0.011795053	0.0418141
17:TT-17:T	-0.59562196	-1.1994291	0.008185134	0.0565003
14:TT-11:TT	0.07397724	-0.5298299	0.677784328	1.0000000
17:TT-11:TT	0.09395742	-0.5098497	0.697764516	0.9999999
17:TT-14:TT	0.01998019	-0.5838269	0.623787280	1.0000000

Durvillaea antarctica after 100 days

Temperatures:

Factors	Difference	Lower	Upper	p-value
14-11	-0.04533717	-0.5444823	0.45380796	0.9637143
17-11	-0.67012122	-1.2754236	-0.06481883	0.0319584 *
17-14	-0.62478404	-1.3096055	0.06003743	0.0722860

Light/sediment treatments:

Factors	Difference	Lower	Upper	p-value
HL-C	0.58059599	-0.7328951	1.89408705	0.6118286
S-C	0.20987099	-1.1746702	1.59441215	0.9916156
SS-C	-0.27586128	-1.5893523	1.03762979	0.9658968
T-C	0.42892745	-0.8845636	1.74241851	0.8289793
TT-C	0.60914366	-1.0865660	2.30485334	0.7720865
S-HL	-0.37072499	-1.2463857	0.50493572	0.6487132
SS-HL	-0.85645726	-1.6148017	-0.09811284	0.0269562 *
T-HL	-0.15166854	-0.9100130	0.60667588	0.9721189
TT-HL	0.02854768	-1.2849434	1.34203874	0.9999993
SS-S	-0.48573227	-1.3613930	0.38992844	0.4040455
T-S	0.21905645	-0.6566043	1.09471716	0.9321719
TT-S	0.39927267	-0.9852685	1.78381382	0.8865718
T-SS	0.70478872	-0.0535557	1.46313314	0.0704472
TT-SS	0.88500494	-0.4284861	2.19849601	0.2403217
TT-T	0.18021622	-1.1332748	1.49370728	0.9946631

Temperature x Light/sediment treatments:

Factors	Difference	Lower	Upper	p-value
14:C-11:C	NA	NA	NA	NA
17:C-11:C	NA	NA	NA	NA
11:HL-11:C	0.83108058	-1.0813925	2.7435537	0.7832218
14:HL-11:C	0.36015534	-1.5523178	2.2726285	0.9997325
17:HL-11:C	-0.24028747	-2.4486212	1.9680463	0.9999998
11:S-11:C	0.20987099	-1.5932260	2.0129679	0.9999995

Temperature x Light/sediment treatments:

Factors	Difference	Lower	Upper	<i>p</i> -value
14:S-11:C	NA	NA	NA	NA
17:S-11:C	NA	NA	NA	NA
11:SS-11:C	-0.32375013	-2.1268471	1.4793468	0.9998475
14:SS-11:C	-0.37073893	-2.5790727	1.8375948	0.9999328
17:SS-11:C	-0.75277546	-2.9611092	1.4555583	0.9406656
11:T-11:C	0.50728651	-1.4051866	2.4197596	0.9911444
14:T-11:C	0.32525462	-1.5872185	2.2377277	0.9999211
17:T-11:C	-0.28124061	-2.4895743	1.9270931	0.9999983
11:TT-11:C	0.60914366	-1.5991901	2.8174774	0.9876214
14:TT-11:C	NA	NA	NA	NA
17:TT-11:C	NA	NA	NA	NA
17:C-14:C	NA	NA	NA	NA
11:HL-14:C	NA	NA	NA	NA
14:HL-14:C	NA	NA	NA	NA
17:HL-14:C	NA	NA	NA	NA
11:S-14:C	NA	NA	NA	NA
14:S-14:C	NA	NA	NA	NA
17:S-14:C	NA	NA	NA	NA
11:SS-14:C	NA	NA	NA	NA
14:SS-14:C	NA	NA	NA	NA
17:SS-14:C	NA	NA	NA	NA
11:T-14:C	NA	NA	NA	NA
14:T-14:C	NA	NA	NA	NA
17:T-14:C	NA	NA	NA	NA
11:TT-14:C	NA	NA	NA	NA
14:TT-14:C	NA	NA	NA	NA
17:TT-14:C	NA	NA	NA	NA
11:HL-17:C	NA	NA	NA	NA
14:HL-17:C	NA	NA	NA	NA

Temperature x Light/sediment treatments:

Factors	Difference	Lower	Upper	<i>p</i> -value
17:HL-17:C	NA	NA	NA	NA
11:S-17:C	NA	NA	NA	NA
14:S-17:C	NA	NA	NA	NA
17:S-17:C	NA	NA	NA	NA
11:SS-17:C	NA	NA	NA	NA
14:SS-17:C	NA	NA	NA	NA
17:SS-17:C	NA	NA	NA	NA
11:T-17:C	NA	NA	NA	NA
14:T-17:C	NA	NA	NA	NA
17:T-17:C	NA	NA	NA	NA
11:TT-17:C	NA	NA	NA	NA
14:TT-17:C	NA	NA	NA	NA
17:TT-17:C	NA	NA	NA	NA
14:HL-11:HL	-0.47092525	-2.0324530	1.0906025	0.9747975
17:HL-11:HL	-1.07136806	-2.9838412	0.8411051	0.4978136
11:S-11:HL	-0.62120959	-2.0466829	0.8042637	0.7805793
14:S-11:HL	NA	NA	NA	NA
17:S-11:HL	NA	NA	NA	NA
11:SS-11:HL	-1.15483071	-2.5803040	0.2706426	0.1402325
14:SS-11:HL	-1.20181951	-3.1142926	0.7106536	0.3630763
17:SS-11:HL	-1.58385605	-3.4963292	0.3286171	0.1271190
11:T-11:HL	-0.32379407	-1.8853218	1.2377337	0.9992106
14:T-11:HL	-0.50582597	-2.0673537	1.0557018	0.9577525
17:T-11:HL	-1.11232119	-3.0247943	0.8001519	0.4526491
11:TT-11:HL	-0.22193692	-2.1344100	1.6905362	0.9999995
14:TT-11:HL	NA	NA	NA	NA
17:TT-11:HL	NA	NA	NA	NA
17:HL-14:HL	-0.60044281	-2.5129159	1.3120303	0.9660970
11:S-14:HL	-0.15028434	-1.5757576	1.2751890	0.9999999

Temperature x Light/sediment treatments:

Factors	Difference	Lower	Upper	<i>p</i> -value
14:S-14:HL	NA	NA	NA	NA
17:S-14:HL	NA	NA	NA	NA
11:SS-14:HL	-0.68390546	-2.1093788	0.7415678	0.6815238
14:SS-14:HL	-0.73089426	-2.6433674	1.1815789	0.8834519
17:SS-14:HL	-1.11293080	-3.0254039	0.7995423	0.4519951
11:T-14:HL	0.14713118	-1.4143966	1.7086589	1.0000000
14:T-14:HL	-0.03490072	-1.5964285	1.5266270	1.0000000
17:T-14:HL	-0.64139594	-2.5538691	1.2710772	0.9466229
11:TT-14:HL	0.24898833	-1.6634848	2.1614614	0.9999977
14:TT-14:HL	NA	NA	NA	NA
17:TT-14:HL	NA	NA	NA	NA
11:S-17:HL	0.45015847	-1.3529385	2.2532554	0.9948692
14:S-17:HL	NA	NA	NA	NA
17:S-17:HL	NA	NA	NA	NA
11:SS-17:HL	-0.08346266	-1.8865596	1.7196343	1.0000000
14:SS-17:HL	-0.13045146	-2.3387852	2.0778823	1.0000000
17:SS-17:HL	-0.51248799	-2.7208217	1.6958457	0.9974557
11:T-17:HL	0.74757399	-1.1648991	2.6600471	0.8686761
14:T-17:HL	0.56554209	-1.3469310	2.4780152	0.9783136
17:T-17:HL	-0.04095313	-2.2492869	2.1673806	1.0000000
11:TT-17:HL	0.84943113	-1.3589026	3.0577649	0.8793467
14:TT-17:HL	NA	NA	NA	NA
17:TT-17:HL	NA	NA	NA	NA
14:S-11:S	NA	NA	NA	NA
17:S-11:S	NA	NA	NA	NA
11:SS-11:S	-0.53362112	-1.8086032	0.7413610	0.8165455
14:SS-11:S	-0.58060992	-2.3837069	1.2224870	0.9594585
17:SS-11:S	-0.96264645	-2.7657434	0.8404505	0.5561933
11:T-11:S	0.29741552	-1.1280578	1.7228888	0.9991559

Temperature x Light/sediment treatments:

Factors	Difference	Lower	Upper	p-value
14:T-11:S	0.11538363	-1.3100897	1.5408569	1.0000000
17:T-11:S	-0.49111160	-2.2942085	1.3119853	0.9888745
11:TT-11:S	0.39927267	-1.4038243	2.2023696	0.9984171
14:TT-11:S	NA	NA	NA	NA
17:TT-11:S	NA	NA	NA	NA
17:S-14:S	NA	NA	NA	NA
11:SS-14:S	NA	NA	NA	NA
14:SS-14:S	NA	NA	NA	NA
17:SS-14:S	NA	NA	NA	NA
11:T-14:S	NA	NA	NA	NA
14:T-14:S	NA	NA	NA	NA
17:T-14:S	NA	NA	NA	NA
11:TT-14:S	NA	NA	NA	NA
14:TT-14:S	NA	NA	NA	NA
17:TT-14:S	NA	NA	NA	NA
11:SS-17:S	NA	NA	NA	NA
14:SS-17:S	NA	NA	NA	NA
17:SS-17:S	NA	NA	NA	NA
11:T-17:S	NA	NA	NA	NA
14:T-17:S	NA	NA	NA	NA
17:T-17:S	NA	NA	NA	NA
11:TT-17:S	NA	NA	NA	NA
14:TT-17:S	NA	NA	NA	NA
17:TT-17:S	NA	NA	NA	NA
14:SS-11:SS	-0.04698880	-1.8500857	1.7561081	1.0000000
17:SS-11:SS	-0.42902533	-2.2321223	1.3740716	0.9967493
11:T-11:SS	0.83103664	-0.5944367	2.2565099	0.4498301
14:T-11:SS	0.64900475	-0.7764686	2.0744780	0.7376403
17:T-11:SS	0.04250952	-1.7605874	1.8456065	1.0000000

Temperature x Light/sediment treatments:

<u>Factors</u>	<u>Difference</u>	<u>Lower</u>	<u>Upper</u>	<u>p-value</u>
11:TT-11:SS	0.93289379	-0.8702032	2.7359907	0.5939941
14:TT-11:SS	NA	NA	NA	NA
17:TT-11:SS	NA	NA	NA	NA
17:SS-14:SS	-0.38203653	-2.5903703	1.8262972	0.9999027
11:T-14:SS	0.87802544	-1.0344477	2.7904986	0.7290247
14:T-14:SS	0.69599355	-1.2164796	2.6084667	0.9114207
17:T-14:SS	0.08949832	-2.1188354	2.2978321	1.0000000
11:TT-14:SS	0.97988259	-1.2284511	3.1882163	0.7633705
14:TT-14:SS	NA	NA	NA	NA
17:TT-14:SS	NA	NA	NA	NA
11:T-17:SS	1.26006198	-0.6524111	3.1725351	0.3121799
14:T-17:SS	1.07803008	-0.8344430	2.9905032	0.4903087
17:T-17:SS	0.47153486	-1.7367989	2.6798686	0.9989185
11:TT-17:SS	1.36191912	-0.8464146	3.5702529	0.3841958
14:TT-17:SS	NA	NA	NA	NA
17:TT-17:SS	NA	NA	NA	NA
14:T-11:T	-0.18203190	-1.7435597	1.3794959	0.9999995
17:T-11:T	-0.78852712	-2.7010002	1.1239460	0.8289279
11:TT-11:T	0.10185715	-1.8106160	2.0143303	1.0000000
14:TT-11:T	NA	NA	NA	NA
17:TT-11:T	NA	NA	NA	NA
17:T-14:T	-0.60649522	-2.5189683	1.3059779	0.9635809
11:TT-14:T	0.28388904	-1.6285841	2.1963622	0.9999861
14:TT-14:T	NA	NA	NA	NA
17:TT-14:T	NA	NA	NA	NA
11:TT-17:T	0.89038427	-1.3179495	3.0987180	0.8464146
14:TT-17:T	NA	NA	NA	NA
17:TT-17:T	NA	NA	NA	NA
14:TT-11:TT	NA	NA	NA	NA

Temperature x Light/sediment treatments:

<u>Factors</u>	<u>Difference</u>	<u>Lower</u>	<u>Upper</u>	<u>p-value</u>
17:TT-11:TT	NA	NA	NA	NA
17:TT-14:TT	NA	NA	NA	NA

***Lessonia variegata* after 100 days**

Temperature:

Factors	Difference	Lower	Upper	p-value
14-11	-0.3771521	-0.7444547	-0.009849595	0.0433456 **
17-11	-1.6112745	-2.0527172	-1.169831778	0.0000000 ***
17-14	-1.2341224	-1.6755651	-0.792679630	0.0000008 ***

Light/sediment treatments:

Factors	Difference	Lower	Upper	p-value
HL-C	0.2910809	-0.48471646	1.06687818	0.8527833
S-C	-0.5967280	-1.37252535	0.17906929	0.2047822
SS-C	-0.8404870	-1.59581109	-0.08516285	0.0229160 *
T-C	-0.1436046	-0.91940196	0.63219268	0.9921113
TT-C	-0.9395450	-1.67855347	-0.20053647	0.0071740 **
S-HL	-0.8878089	-1.59601172	-0.17960607	0.0081928 **
SS-HL	-1.1315678	-1.81728227	-0.44585340	0.0003879 **
T-HL	-0.4346855	-1.14288833	0.27351732	0.4300576
TT-HL	-1.2306258	-1.89832586	-0.56292581	0.0000867 ***
SS-S	-0.2437589	-0.92947337	0.44195550	0.8785451
T-S	0.4531234	-0.25507943	1.16132621	0.3853510
TT-S	-0.3428169	-1.01051696	0.32488309	0.6170071
T-SS	0.6968823	0.01116789	1.38259676	0.0448036 *
TT-SS	-0.0990580	-0.74285639	0.54474039	0.9966605
TT-T	-0.7959403	-1.46364035	-0.12824031	0.0129185 *

Temperature x light/sediment

Factors	Difference	Lower	Upper	p-value
14:C-11:C	-0.014360799	-1.6775058	1.648784197	1.0000000
17:C-11:C	-0.571336062	-2.6082644	1.465592242	0.9994544
11:HL-11:C	0.568942019	-0.9492947	2.087178737	0.9872518
14:HL-11:C	0.541273173	-0.9769635	2.059509891	0.9921677
17:HL-11:C	-1.564080889	-3.6010092	0.472847415	0.2842608
11:S-11:C	-0.230866719	-1.7491034	1.287369999	0.9999999

Temperature x light/sediment

<u>Factors</u>	<u>Difference</u>	<u>Lower</u>	<u>Upper</u>	<u>p-value</u>
14:S-11:C	-0.621777868	-2.1400146	0.896458850	0.9714914
17:S-11:C	-1.890163822	-3.9270921	0.146764482	0.0900875
11:SS-11:C	-0.562410052	-2.0806468	0.955826666	0.9885869
14:SS-11:C	-1.050302291	-2.5685390	0.467934427	0.4409553
17:SS-11:C	-1.707465181	-3.3706102	-0.044320185	0.0398907 *
11:T-11:C	0.684714236	-0.8335225	2.202950954	0.9379229
14:T-11:C	-0.613925767	-2.1321625	0.904310951	0.9744636
17:T-11:C	-1.488599255	-3.5255276	0.548329049	0.3556960
11:TT-11:C	-0.874320436	-2.3925572	0.643916282	0.7206067
14:TT-11:C	-0.796829841	-2.3150666	0.721406876	0.8290218
17:TT-11:C	-2.076598606	-3.5948353	-0.558361888	0.0017865 **
17:C-14:C	-0.556975262	-2.5939036	1.479953042	0.9996001
11:HL-14:C	0.583302819	-0.9349339	2.101539537	0.9838878
14:HL-14:C	0.555633973	-0.9626027	2.073870691	0.9898528
17:HL-14:C	-1.549720089	-3.5866484	0.487208215	0.2970688
11:S-14:C	-0.216505920	-1.7347426	1.301730798	1.0000000
14:S-14:C	-0.607417069	-2.1256538	0.910819649	0.9767468
17:S-14:C	-1.875803022	-3.9127313	0.161125282	0.0952420
11:SS-14:C	-0.548049253	-2.0662860	0.970187465	0.9911349
14:SS-14:C	-1.035941492	-2.5541782	0.482295226	0.4629090
17:SS-14:C	-1.693104382	-3.3562494	-0.029959386	0.0429381 *
11:T-14:C	0.699075035	-0.8191617	2.217311753	0.9275830
14:T-14:C	-0.599564968	-2.1178017	0.918671750	0.9792929
17:T-14:C	-1.474238456	-3.5111668	0.562689849	0.3703956
11:TT-14:C	-0.859959637	-2.3781964	0.658277081	0.7422192
14:TT-14:C	-0.782469042	-2.3007058	0.735767676	0.8464792
17:TT-14:C	-2.062237807	-3.5804745	-0.544001089	0.0019526 **
11:HL-17:C	1.140278081	-0.7801563	3.060712503	0.6784188
14:HL-17:C	1.112609235	-0.8078252	3.033043658	0.7125352

Temperature x light/sediment

Factors	Difference	Lower	Upper	<i>p</i> -value
17:HL-17:C	-0.992744827	-3.3447870	1.359297383	0.9632362
11:S-17:C	0.340469343	-1.5799651	2.260903765	0.9999989
14:S-17:C	-0.050441806	-1.9708762	1.869992616	1.0000000
17:S-17:C	-1.318827760	-3.6708700	1.033214449	0.7549671
11:SS-17:C	0.008926010	-1.9115084	1.929360432	1.0000000
14:SS-17:C	-0.478966229	-2.3994007	1.441468193	0.9998750
17:SS-17:C	-1.136129119	-3.1730574	0.900799185	0.7614685
11:T-17:C	1.256050298	-0.6643841	3.176484720	0.5307022
14:T-17:C	-0.042589705	-1.9630241	1.877844717	1.0000000
17:T-17:C	-0.917263193	-3.2693054	1.434779016	0.9815143
11:TT-17:C	-0.302984374	-2.2234188	1.617450048	0.9999998
14:TT-17:C	-0.225493780	-2.1459282	1.694940643	1.0000000
17:TT-17:C	-1.505262544	-3.4256970	0.415171878	0.2566820
14:HL-11:HL	-0.027668846	-1.3856210	1.330283357	1.0000000
17:HL-11:HL	-2.133022908	-4.0534573	-0.212588486	0.0191295 *
11:S-11:HL	-0.799808738	-2.1577609	0.558143465	0.6898391
14:S-11:HL	-1.190719887	-2.5486721	0.167232316	0.1335972
17:S-11:HL	-2.459105841	-4.3795403	-0.538671419	0.0040453 **
11:SS-11:HL	-1.131352071	-2.4893043	0.226600131	0.1836723
14:SS-11:HL	-1.619244310	-2.9771965	-0.261292107	0.0091339 **
17:SS-11:HL	-2.276407200	-3.7946439	-0.758170482	0.0005178
11:T-11:HL	0.115772217	-1.2421800	1.473724419	1.0000000
14:T-11:HL	-1.182867786	-2.5408200	0.175084416	0.1394898
17:T-11:HL	-2.057541274	-3.9779757	-0.137106852	0.0270782 *
11:TT-11:HL	-1.443262455	-2.8012147	-0.085310253	0.0291852 *
14:TT-11:HL	-1.365771861	-2.7237241	-0.007819658	0.0476340 *
17:TT-11:HL	-2.645540625	-4.0034928	-1.287588422	0.0000084 ***
17:HL-14:HL	-2.105354062	-4.0257885	-0.184919640	0.0217435 *
11:S-14:HL	-0.772139892	-2.1300921	0.585812310	0.7372745

Temperature x light/sediment

Factors	Difference	Lower	Upper	<i>p</i> -value
14:S-14:HL	-1.163051041	-2.5210032	0.194901161	0.1553255
17:S-14:HL	-2.431436995	-4.3518714	-0.511002573	0.0046260 **
11:SS-14:HL	-1.103683226	-2.4616354	0.254268977	0.2116173
14:SS-14:HL	-1.591575464	-2.9495277	-0.233623262	0.0110022 *
17:SS-14:HL	-2.248738354	-3.7669751	-0.730501637	0.0006146 ***
11:T-14:HL	0.143441062	-1.2145111	1.501393265	1.0000000
14:T-14:HL	-1.155198941	-2.5131511	0.202753262	0.1619940
17:T-14:HL	-2.029872429	-3.9503069	-0.109438006	0.0307073 *
11:TT-14:HL	-1.415593610	-2.7735458	-0.057641407	0.0348290 *
14:TT-14:HL	-1.338103015	-2.6960552	0.019849188	0.0564975 .
17:TT-14:HL	-2.617871779	-3.9758240	-1.259919577	0.0000100 ***
11:S-17:HL	1.333214170	-0.5872203	3.253648592	0.4353765
14:S-17:HL	0.942303021	-0.9781314	2.862737443	0.8873789
17:S-17:HL	-0.326082933	-2.6781251	2.025959276	1.0000000
11:SS-17:HL	1.001670837	-0.9187636	2.922105259	0.8351334
14:SS-17:HL	0.513778598	-1.4066558	2.434213020	0.9996949
17:SS-17:HL	-0.143384292	-2.1803126	1.893544012	1.0000000
11:T-17:HL	2.248795125	0.3283607	4.169229547	0.0111088 *
14:T-17:HL	0.950155122	-0.9702793	2.870589544	0.8810991
17:T-17:HL	0.075481634	-2.2765606	2.427523843	1.0000000
11:TT-17:HL	0.689760453	-1.2306740	2.610194875	0.9915658
14:TT-17:HL	0.767251047	-1.1531834	2.687685470	0.9770339
17:TT-17:HL	-0.512517717	-2.4329521	1.407916705	0.9997041
14:S-11:S	-0.390911149	-1.7488634	0.967041054	0.9992546
17:S-11:S	-1.659297103	-3.5797315	0.261137319	0.1469602
11:SS-11:S	-0.331543333	-1.6894955	1.026408870	0.9999053
14:SS-11:S	-0.819435572	-2.1773878	0.538516631	0.6550449
17:SS-11:S	-1.476598462	-2.9948352	0.041638256	0.0628137
11:T-11:S	0.915580955	-0.4423712	2.273533158	0.4820179

Temperature x light/sediment

Factors	Difference	Lower	Upper	<i>p</i> -value
14:T-11:S	-0.383059048	-1.7410113	0.974893155	0.9994156
17:T-11:S	-1.257732536	-3.1781670	0.662701886	0.5285659
11:TT-11:S	-0.643453717	-2.0014059	0.714498486	0.9111252
14:TT-11:S	-0.565963122	-1.9239153	0.791989080	0.9669134
17:TT-11:S	-1.845731887	-3.2036841	-0.487779684	0.0019363 **
17:S-14:S	-1.268385954	-3.1888204	0.652048468	0.5150815
11:SS-14:S	0.059367816	-1.2985844	1.417320019	1.0000000
14:SS-14:S	-0.428524423	-1.7864766	0.929427780	0.9978490
17:SS-14:S	-1.085687313	-2.6039240	0.432549405	0.3888973
11:T-14:S	1.306492104	-0.0514601	2.664444307	0.0684441
14:T-14:S	0.007852101	-1.3501001	1.365804304	1.0000000
17:T-14:S	-0.866821387	-2.7872558	1.053613035	0.9375338
11:TT-14:S	-0.252542568	-1.6104948	1.105409635	0.9999978
14:TT-14:S	-0.175051973	-1.5330042	1.182900229	1.0000000
17:TT-14:S	-1.454820738	-2.8127729	-0.096868535	0.0270923 *
11:SS-17:S	1.327753770	-0.5926807	3.248188192	0.4418953
14:SS-17:S	0.839861531	-1.0805729	2.760295953	0.9510319
17:SS-17:S	0.182698641	-1.8542297	2.219626945	1.0000000
11:T-17:S	2.574878058	0.6544436	4.495312480	0.0023019 **
14:T-17:S	1.276238055	-0.6441964	3.196672477	0.5051974
17:T-17:S	0.401564567	-1.9504776	2.753606776	0.9999994
11:TT-17:S	1.015843386	-0.9045910	2.936277808	0.8211136
14:TT-17:S	1.093333980	-0.8271004	3.013768403	0.7356620
17:TT-17:S	-0.186434784	-2.1068692	1.733999638	1.0000000
14:SS-11:SS	-0.487892239	-1.8458444	0.870059964	0.9915386
17:SS-11:SS	-1.145055129	-2.6632918	0.373181589	0.3094204
11:T-11:SS	1.247124288	-0.1108279	2.605076491	0.0971398
14:T-11:SS	-0.051515715	-1.4094679	1.306436488	1.0000000
17:T-11:SS	-0.926189203	-2.8466236	0.994245219	0.8996426

Temperature x light/sediment

Factors	Difference	Lower	Upper	<i>p</i> -value
11:TT-11:SS	-0.311910384	-1.6698626	1.046041819	0.9999579
14:TT-11:SS	-0.234419789	-1.5923720	1.123532413	0.9999993
17:TT-11:SS	-1.514188554	-2.8721408	-0.156236351	0.0184003 *
17:SS-14:SS	-0.657162890	-2.1753996	0.861073828	0.9548772
11:T-14:SS	1.735016527	0.3770643	3.092968730	0.0041531 **
14:T-14:SS	0.436376524	-0.9215757	1.794328727	0.9973702
17:T-14:SS	-0.438296964	-2.3587314	1.482137458	0.9999614
11:TT-14:SS	0.175981855	-1.1819703	1.533934058	1.0000000
14:TT-14:SS	0.253472450	-1.1044798	1.611424652	0.9999977
17:TT-14:SS	-1.026296315	-2.3842485	0.331655888	0.3064635
11:T-17:SS	2.392179417	0.8739427	3.910416135	0.0002531 ***
14:T-17:SS	1.093539414	-0.4246973	2.611776132	0.3777871
17:T-17:SS	0.218865926	-1.8180624	2.255794230	1.0000000
11:TT-17:SS	0.833144745	-0.6850920	2.351381463	0.7809011
14:TT-17:SS	0.910635340	-0.6076014	2.428872057	0.6638675
17:TT-17:SS	-0.369133425	-1.8873701	1.149103293	0.9999103
14:T-11:T	-1.298640003	-2.6565922	0.059312200	0.0717445
17:T-11:T	-2.173313491	-4.0937479	-0.252879069	0.0158535 *
11:TT-11:T	-1.559034672	-2.9169869	-0.201082469	0.0136748 *
14:TT-11:T	-1.481544077	-2.8394963	-0.123591875	0.0227833 *
17:TT-11:T	-2.761312842	-4.1192650	-1.403360639	0.0000039 ***
17:T-14:T	-0.874673488	-2.7951079	1.045760934	0.9331755
11:TT-14:T	-0.260394669	-1.6183469	1.097557534	0.9999966
14:TT-14:T	-0.182904074	-1.5408563	1.175048128	1.0000000
17:TT-14:T	-1.462672839	-2.8206250	-0.104720636	0.0257522 *
11:TT-17:T	0.614278819	-1.3061556	2.534713241	0.9975009
14:TT-17:T	0.691769414	-1.2286650	2.612203836	0.9913186
17:TT-17:T	-0.587999351	-2.5084338	1.332435071	0.9984698
14:TT-11:TT	0.077490595	-1.2804616	1.435442798	1.0000000

Temperature x light/sediment

<u>Factors</u>	<u>Difference</u>	<u>Lower</u>	<u>Upper</u>	<u>p-value</u>
17:TT-11:TT	-1.202278170	-2.5602304	0.155674033	0.1253036
17:TT-14:TT	-1.279768765	-2.6377210	0.078183438	0.0802660