

## Surveys of environmental DNA (eDNA): a new approach to estimate occurrence in Vulnerable manatee populations

Margaret E. Hunter\*, Gaia Meigs-Friend, Jason A. Ferrante, Aristide Takoukam Kamla, Robert M. Dorazio, Lucy Keith Diagne, Fabia Luna, Janet M. Lanyon, James P. Reid

\*Corresponding author: mhunter@usgs.gov

*Endangered Species Research 35: 101–111 (2018)*

### Supplemental Figures

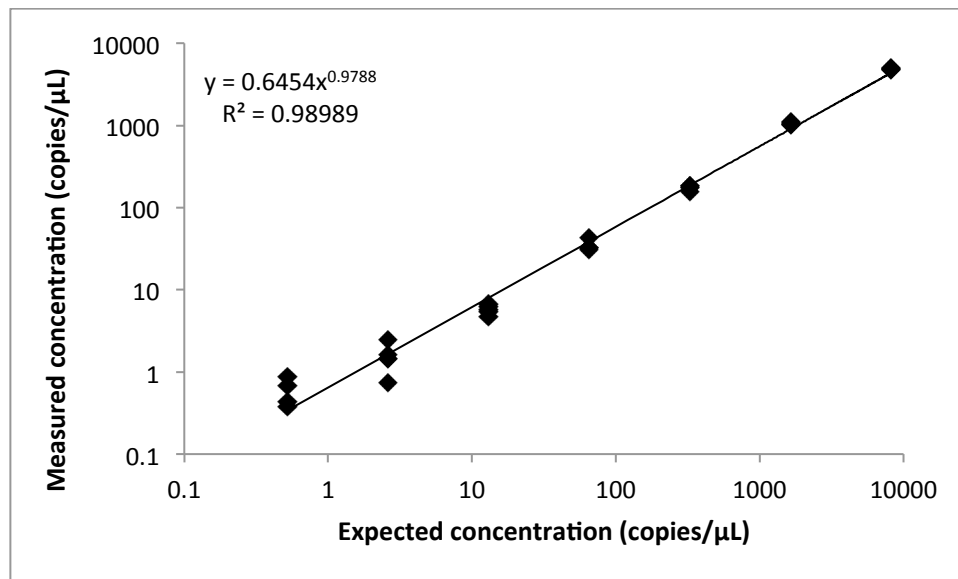


Fig. S1. Digital PCR standard dilution series. Expected synthetic gene concentrations (copies/μl) are plotted on a logarithmic scale along the  $x$ -axis from a 1:5 standard series with 8 dilution points and 5 replicates each. No droplets were observed for the eighth dilution and some standards only amplified four of five replicates. Measured concentrations (copies/μl) are plotted along a logarithmic scale on the  $y$ -axis.

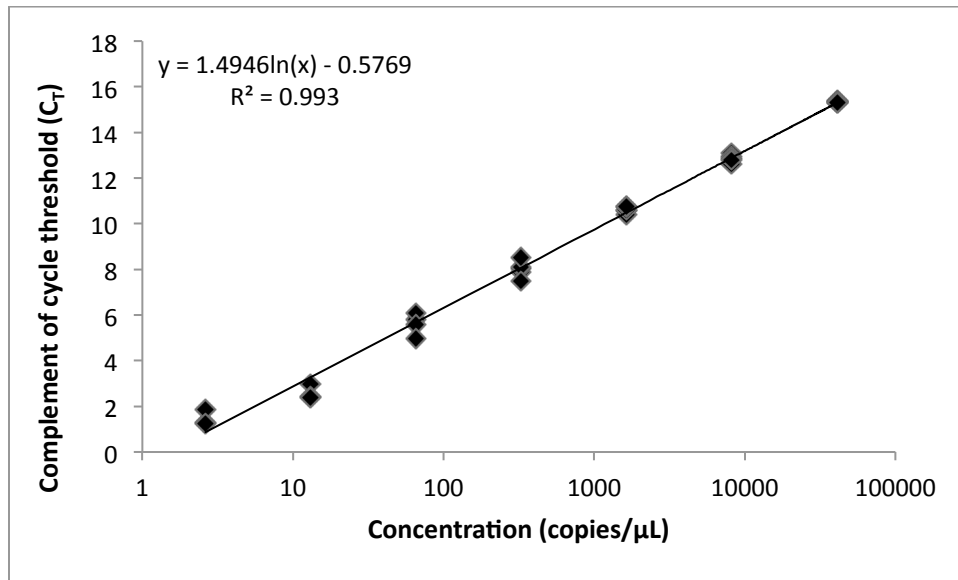


Fig. S2. Quantitative PCR standard dilution series. Synthetic gene concentrations (copies/μl) are plotted on a logarithmic along the *x*-axis from a 1:5 standard series with 8 dilution points and 5 replicates each. No amplifications were observed for replicates of the eighth dilution and some standards only amplified three or four of the five replicates. The complement of the cycle threshold ( $C_T$ ) of measured concentrations are plotted along the *y*-axis. Primer efficiency, 95.25%; slope, -3.44; and  $R^2$  correlation coefficient, 0.993.

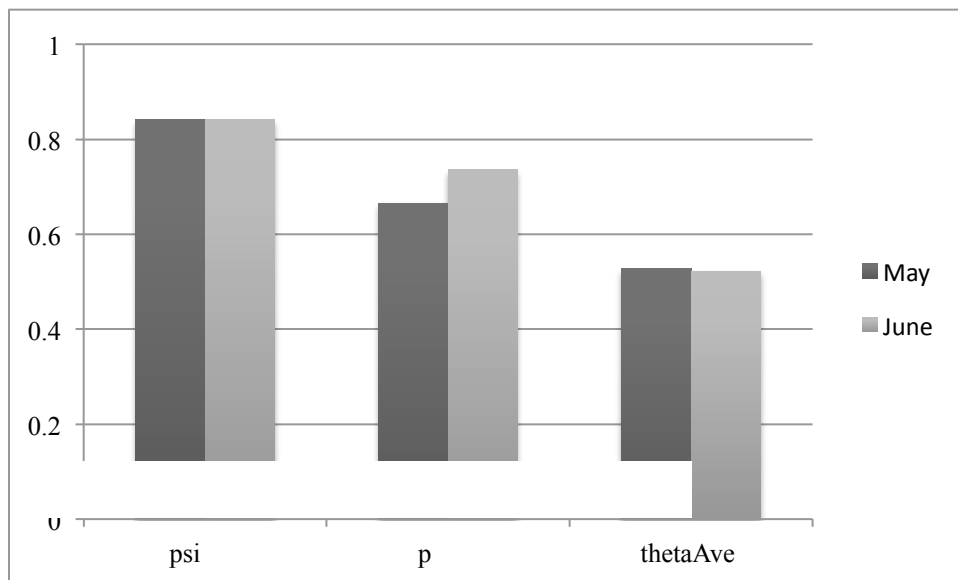


Fig. S3. Median occurrence ( $\psi$ ), detection ( $p$ ), and average conditional probability of occurrence of probabilities ( $\theta$ ) manatee environmental DNA collected in Lake Wimico, Florida, in the Florida Panhandle, in May and June 2015.

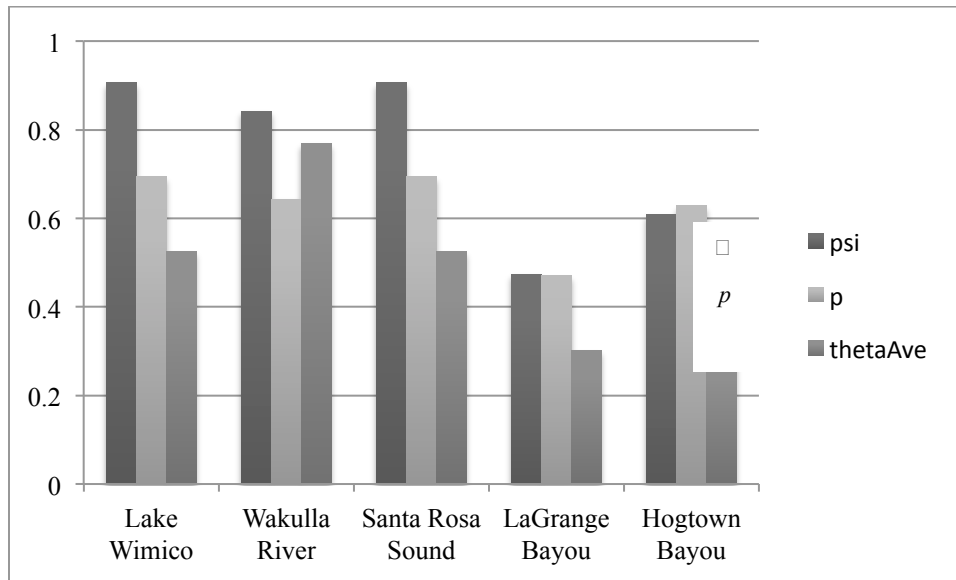


Fig. S4. Median occurrence ( $\psi$ ), detection ( $p$ ), and average conditional probability of occurrence of probabilities ( $\theta$ ) manatee environmental DNA collected in the Florida Panhandle. Salinities were: 0, Lake Wimico and Wakulla River; 20, Santa Rosa Sound; 10-15, LaGrange Bayou; 20-23, Hogtown Bayou. Note that Santa Rosa Sound only had one site sampled.