

Distribution and growth rates of immature hawksbill turtles *Eretmochelys imbricata* in Fernando de Noronha, Brazil

Cláudio Bellini, Armando J. B. Santos, Ana R. Patrício, Luís Felipe W. Bortolon,
Brendan J. Godley, Maria A. Marcovaldi, Dominic Tilley, Liliana P. Colman*

*Corresponding author: l.p.colman@exeter.ac.uk

Endangered Species Research 40: 41–52 (2019)

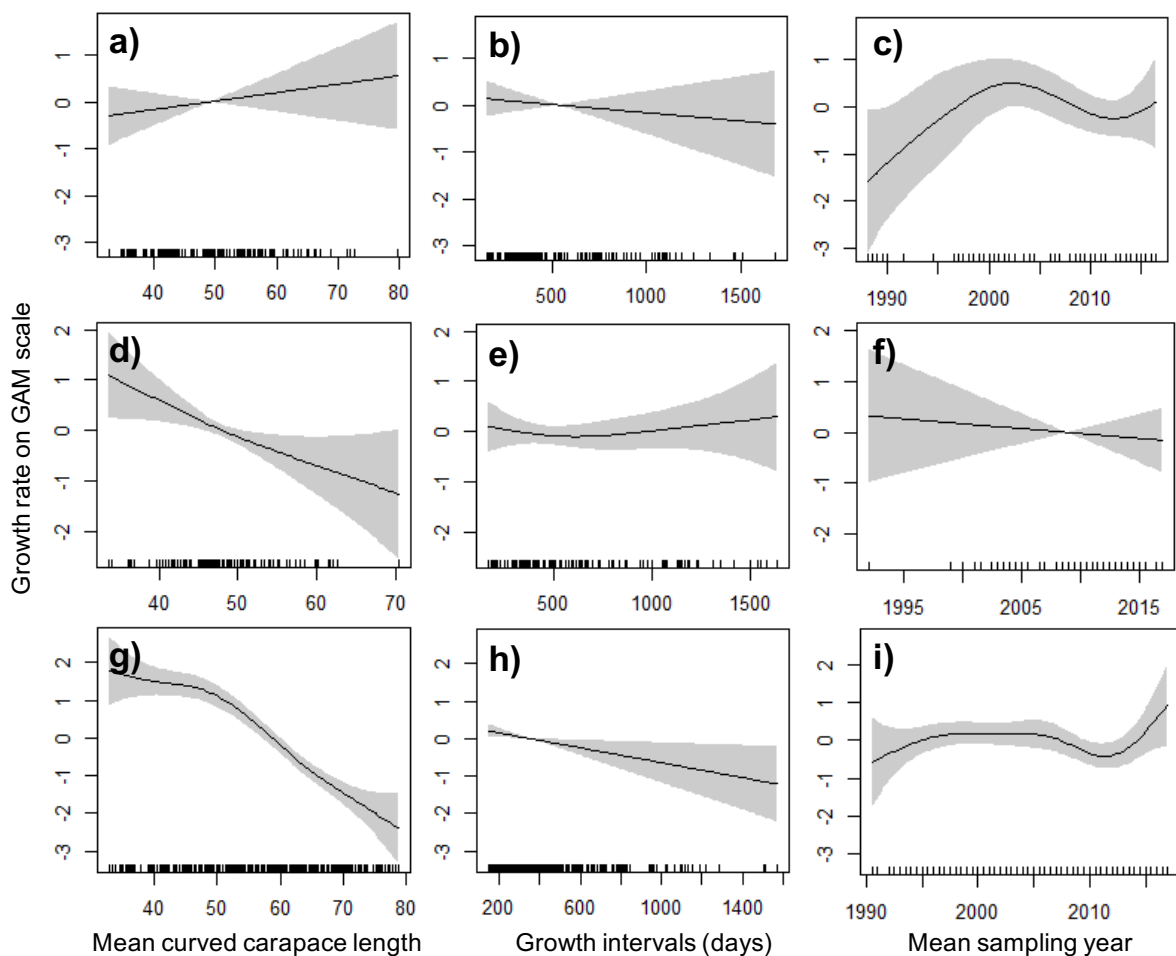


Fig. S1. Graphical summary of generalized additive mixed model fits for growth rates of juvenile hawksbill turtles in Fernando de Noronha, with results shown for each site within the island, from 1987-2017. Covariates are shown on the x-axis: mean curved carapace length (CCL), mean sampling year and recapture interval (days). The response variable (growth rate in cm year^{-1}) is shown on the y-axes. (a-c) Mar de Dentro, (d-f) Mar de Fora, (g-i) Sueste

Table S1. Hawksbill turtle capture sites and number of individuals captured according to the regions: *MDD* Mar de Dentro, *MDF* Mar de Fora and *SWT* Sueste

Area	Site name	Captures (n)
MDD	Biboca	1
	Baia do Golfinhos	7
	Boldró	12
	Buracão 2	3
	Buraco da Sapata	8
	Cabeço da Sapata	1
	Cabeço das Cordas	1
	Conceição	11
	Cacimba do Padre	2
	Caverna da Sapata	2
	Enseada ao Lado do Buracão	1
	Enseada do Forte	1
	Lage Dois Irmãos	1
	Morro Dois Irmãos	4
	Morro de Fora	1
	Pepino	19
	Praia do Meio	1
	Baía dos Porcos	1
	Porto Santo Antonio	52
	Portal da Sapata	12
Sancho	22	
Subtotal		163
MDF	Praia da Atalaia	1
	Buraco da Raquel	3
	Buraco do Inferno	15
	Cabras	32
	Caieira	12
	Cagarras	8
	Cabeço Submarino	4
	Cordilheira	2
	Canal da Ressurreta	20
	Enseada do Abreu	6
	Enseada das Cagarras	26
	Ilha do Frade	6
	Ilha Rasa	1
	Ilha da Rata	11
	Ilha Sela Gineta	12
	Iuias	3
	Lagoa da Viração	1
	Macaxeira	4
	Pedras Secas	10
	Pedra Alta	1
Pontinha	1	
Subtotal		179
SWT	Leão	18
	Ponta das Caracas	3
	Sueste	133
Subtotal		154
Grand total		496

Table S2. Size class-specific growth rates of juvenile hawksbill turtles by location in Fernando de Noronha, 1987–2017. *MDD* Mar de Dentro, *MDF* Mar de Fora and *SWT* Sueste

Size class	SWT			MDD			MDF		
	Growth Rate (cm.yr ⁻¹)			Growth Rate (cm.yr ⁻¹)			Growth Rate (cm.yr ⁻¹)		
	mean	SD	n	mean	SD	n	mean	SD	n
30cm	5.2	3.1	32	2.7	1.5	23	3.5	1.8	8
40cm	5.1	2.1	89	3.1	1.5	75	2.6	1.5	71
50cm	4.2	2.0	151	3.4	2.9	46	2.2	2.1	32
60cm	3.0	1.7	174	4.0	2.9	15	2.2	1.6	9
70cm	1.8	1.5	61	3.6	2.5	5	1.3	0.1	2
Overall	3.7	2.3	507	3.2	2.1	164	2.5	1.7	122