

Supplement

Table S1: Total counts of observed seabird species and species groups, (families), fishing zone and conservation and IUCN status.

Name	Family	Zone	Total	Conservation status (Gorta et al. 2019/ IUCN status)
Australian gannet, <i>Morus serrator</i>	Sulidae	OTFC	7	Decreasing/ Least concern
Australian gannet, <i>Morus serrator</i>	Sulidae	OTFS	69	Decreasing/ Least concern
Black-browed albatross, <i>Thalassarche melanophrys</i>	Diomedidae	OTFC	53	Increasing/ Least concern
Black-browed albatross, <i>Thalassarche melanophrys</i>	Diomedidae	OTFS	3280	Increasing/ Least concern
Black-browed albatross, <i>Thalassarche melanophrys</i>	Diomedidae	OTFN	2	Increasing/ Least concern
Buller's albatross, <i>Thalassarche bulleri</i>	Diomedidae	OTFC	9	Increasing/ Near threatened
Buller's albatross, <i>Thalassarche bulleri</i>	Diomedidae	OTFS	7	Increasing/ Near threatened
Common tern, <i>Sterna hirundo</i>	Laridae	OTFC	1151	NA/ Least concern
Crested tern, <i>Sterna bergii</i>	Laridae	OTFC	293	NA/ Least concern
Crested tern, <i>Sterna bergii</i>	Laridae	OTFS	147	NA/ Least concern
Crested tern, <i>Sterna bergii</i>	Laridae	OTFN	9017	NA/ Least concern
Flesh-footed shearwater, <i>Puffinus carneipes</i>	Procellariidae	OTFC	367	Decreasing/ Near threatened
Flesh-footed shearwater, <i>Puffinus carneipes</i>	Procellariidae	OTFS	15165	Decreasing/ Near threatened
Great cormorant, <i>Phalacrocorax carbo</i>	Phalacrocoracidae	OTFC	3	NA/ Least concern
Great skua, <i>Catharacta skua</i>	Stercorariidae	OTFN	50	NA/ Least concern
Great-winged petrel, <i>Pterodroma macroptera</i>	Procellariidae	OTFC	1	NA/ Least concern
Great-winged petrel, <i>Pterodroma macroptera</i>	Procellariidae	OTFS	302	NA/ Least concern
Grey headed albatross, <i>Thalassarche chrysostoma</i>	Diomedidae	OTFS	12	Decreasing/ Endangered
Kelp gull, <i>Larus dominicanus</i>	Laridae	OTFS	1	NA/ Least concern
Northern giant petrel, <i>Macronectes halli</i>	Procellariidae	OTFC	1	Increasing/ Least concern
Australian pelican, <i>Pelecanus conspicillatus</i>	Pelecanidae	OTFC	84	NA/ Least concern
Pied cormorant, <i>Phalacrocorax varius</i>	Phalacrocoracidae	OTFC	6	NA/ Least concern
Short-tailed shearwater, <i>Puffinus tenuirostris</i>	Procellariidae	OTFC	7428	Stable/ Least concern
Short-tailed shearwater, <i>Puffinus tenuirostris</i>	Procellariidae	OTFS	2231	Stable/ Least concern
Short-tailed shearwater, <i>Puffinus tenuirostris</i>	Procellariidae	OTFN	545	Stable/ Least concern

Shy albatross, <i>Thalassarche cauta</i>	Diomedidae	OTFC	366	Increasing/ Near threatened
Shy albatross, <i>Thalassarche cauta</i>	Diomedidae	OTFS	1993	Increasing/ Near threatened
Shy albatross, <i>Thalassarche cauta</i>	Diomedidae	OTFN	1	Increasing/ Near threatened
Silver gull, <i>Larus novaehollandiae</i>	Laridae	OTFC	2302	NA/ Least concern
Silver gull, <i>Larus novaehollandiae</i>	Laridae	OTFS	1327	NA/ Least concern
Silver gull, <i>Larus novaehollandiae</i>	Laridae	OTFN	12 348	NA/ Least concern
Wandering albatross, <i>Diomedea exulans</i>	Diomedidae	OTFC	2	Decreasing/ vulnerable
Wedge tailed shearwater, <i>Puffinus pacificus</i>	Procellariidae	OTFC	3660	Decreasing/ Least concern
Wedge tailed shearwater, <i>Puffinus pacificus</i>	Procellariidae	OTFS	4527	Decreasing/ Least concern
Wedge tailed shearwater, <i>Puffinus pacificus</i>	Procellariidae	OTFN	999	Decreasing/ Least concern
White-chinned petrel, <i>Procellaria aequinoctialis</i>	Procellariidae	OTFS	330	NA/ Vulnerable
White-necked petrel, <i>Pterodroma cervicalis</i>	Procellariidae	OTFS	3	NA/ Vulnerable
Yellow nosed albatross (Atlantic), <i>Thalassarche chlororhynchos</i>	Diomedidae	OTFC	2	NA/ Endangered
Yellow nosed albatross (Indian), <i>Thalassarche carteri</i>	Diomedidae	OTFS	1039	Decreasing/ Endangered
Albatrosses	Diomedidae	OTFC	1499	NA
Albatrosses	Diomedidae	OTFS	939	NA
Albatrosses	Diomedidae	OTFN	101	NA
Gannets & boobies	Sulidae	OTFC	29	NA
Gannets & boobies	Sulidae	OTFS	160	NA
Gulls, skuas, noddys & terns	Stercorariidae/ Laridae	OTFC	511	NA
Gulls, skuas, noddys & terns	Stercorariidae/ Laridae	OTFS	2722	NA
Petrels	Procellariidae	OTFS	3474	NA
Petrels, prions & shearwaters	Procellariidae	OTFN	150	NA
Petrels, prions & shearwaters	Procellariidae	OTFS	807	NA
Phalacrocoracidae - undifferentiated	Phalacrocoracidae	OTFC	5	NA
Procellariidae - undifferentiated	Procellariidae	OTFC	6231	NA
Shearwaters	Procellariidae	OTFS	868	NA
Shearwaters	Procellariidae	OTFN	17 072	NA
Skuas, gulls	Stercorariidae/ Laridae	OTFN	15	NA
Terns	Laridae	OTFS	1260	NA
Terns	Laridae	OTFN	305	NA

NA = not applicable

Procellariidae = petrels, Laridae = gulls, Diomedidae = albatross.

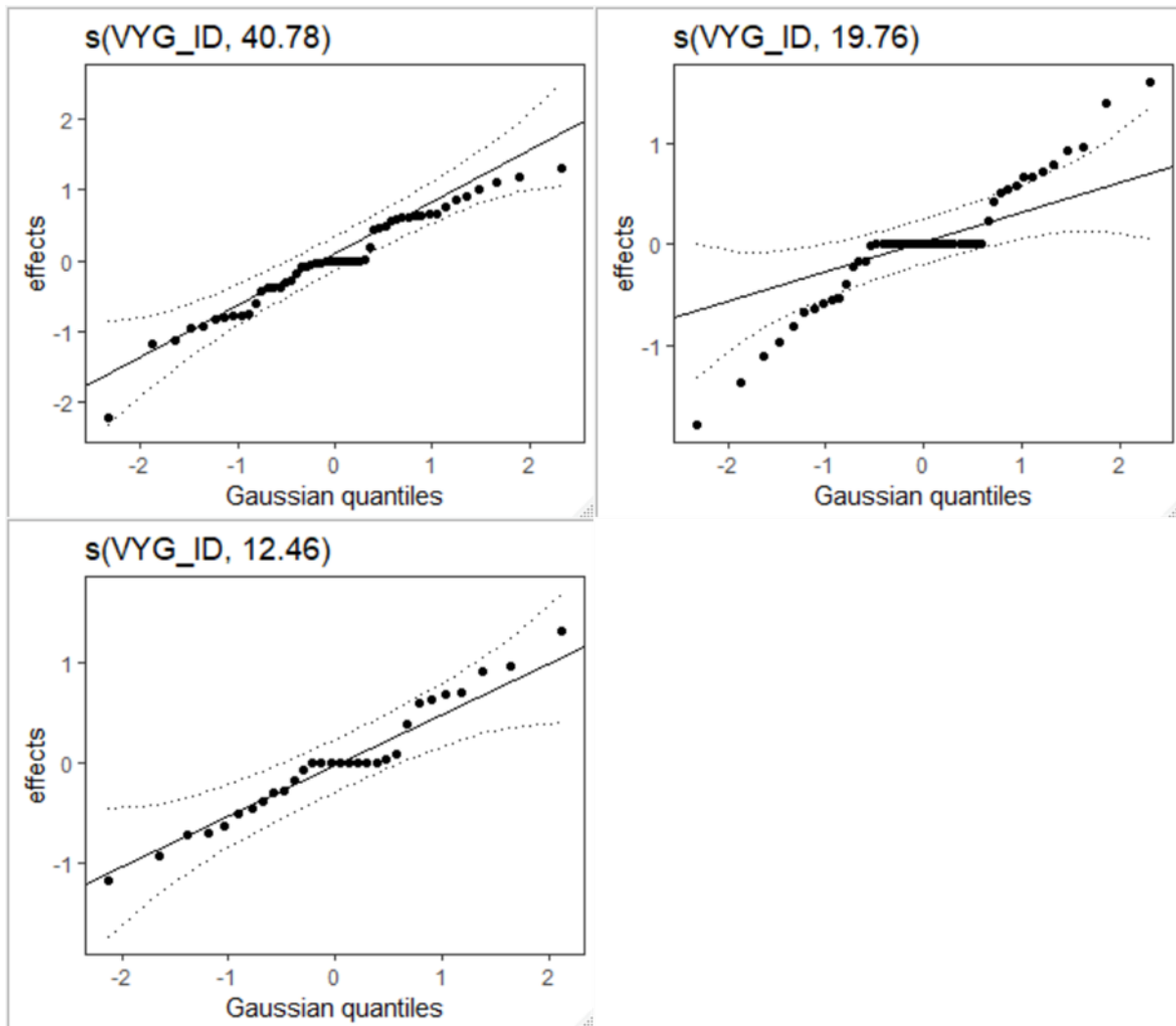


Fig. S1: Q-Q plots comparing the observed distribution of estimate values of the random effects against the theoretical expectation, for petrels, gulls and albatross (top to bottom). Random effects are fishing voyages (VYG_ID).